



e-ISSN: 2319-8753 | p-ISSN: 2347-6710

# IJRSET

International Journal of Innovative Research in  
**SCIENCE | ENGINEERING | TECHNOLOGY**



# INTERNATIONAL JOURNAL OF INNOVATIVE RESEARCH

IN SCIENCE | ENGINEERING | TECHNOLOGY

Volume 12, Issue 7, July 2023

**ISSN** INTERNATIONAL  
STANDARD  
SERIAL  
NUMBER  
INDIA

Impact Factor: 8.423

9940 572 462

6381 907 438

[ijirset@gmail.com](mailto:ijirset@gmail.com)

[www.ijirset.com](http://www.ijirset.com)

# Layering of Geographic Information with Integrated Transfer

Shreya N V<sup>1</sup>, Vasantha S<sup>2</sup>

P.P.G. Student, Department of Computer Application, Sir M Visvesvaraya Institute of Technology,  
Hunsamaranahalli, Bangalore, India<sup>1</sup>

Assistant Professor, Department of Computer Application, Sir M Visvesvaraya Institute of Technology,  
Hunsamaranahalli, Bangalore, India<sup>2</sup>

**ABSTRACT:** Informatics in multiple aspects is the main issue is to involve a system design is automation. The technology connects many forms of layered functionality, makes it possible to integrate a wide range of components on the map. For optimal exploration and offering there are many layer information preferences, multiple sorts of base maps can be used for various methods for reference. It can also be organized well as different people will be involved and different stage maps will be created. This necessary component alteration can be easily directed through any type of integrated cooperative. Any sort of item that is required for the change in component that is used for designing the info graphics, such as information integration or view of specific object, and also offered with the system. The system allows for multiple layer customization and reusability, allow for wide range of operational tasks which has be accomplished.

**KEYWORDS:** Geographic Information, Integrated Transfer

## I. INTRODUCTION

“Layering of Geographic Information with Integrated Transfer” refers to the system which is based on information mapping system. The method of presenting elements in a map format is essential in various type of automated machine-related tasks, numerous kinds of elements and forecast are required to be taken with instantaneous information fetching. Various type of organization need cartography so that the system's design can support them to create, update and implement to any integrated activity. The system connects several type of layered functioning which will be advantageous to include many types of components on the map. The system is designed in such a way that numerous conditional layering is necessary to provide information.

It can be organized appropriately because different people will be included and different stage maps will be built. Any kind of Integrated cooperative this is necessary component for modifications which can be simply channeled . The system supports multiple layer customization and reusability, making it possible to complete a variety of operational tasks.

## II. LITERATURE SURVEY

### EXISTING SYSTEM

The Problem raised with the current system is that all of these organizations have to design an information mapping system that is quite complex in nature because it needs different types of base maps, information from different types of intelligent triggers that must be updated, and real-time information integration. In the current system, all businesses use different types of mapping tools.

The deployment assistance that is needed once a map has been designed is also complicated because we have observed many types of compatibility issues in proposed system.

It can be challenging to distinguish the proposed system from information based on cartography. Individually handled by any analytical data.

### PROPOSED SYSTEM

Layering of Geographic info with integrated transfer that was implemented for Numerous Kinds of platform made easy by integrating all kinds of references on single system. With the aid of the numerous functional references offered, each linked activity that must be acknowledged will be recognized.

The user will receive proper embedded support and real-time map transmission. The system also collaborates with venture into research so various kinds of information are gathered. Individually handled analytical data of every kind and desired type of component visualisation is also available.

The proposed system should be built to manage massive amounts of data while being efficient. It should be scalable to support growing data quantities and user demands, allowing layering and integration operations to be completed on time.

### III. METHODOLOGY

#### Cartography

Cartography is concerned with the design and arrangement of maps in order to efficiently convey information. Choosing appropriate colors, symbols, and typography to represent various aspects and data on the map is part of this process. Map design also includes scale, projection, and generalisation selections to guarantee clarity and readability. Cartography is the process of selecting and creating symbols to represent various geographic elements and data types. Natural characteristics such as mountains or rivers, cultural features such as cities or roads, or abstract facts such as population density or land usage can all be represented by symbols.

Geographic information system techniques for mapping and visualization, which entail the generation of maps and visual representations of geospatial data, are also included. This includes the use of symbolism and other methods for clearly expressing spatial information to users.

Cartographers use generalisation techniques to reduce and abstract complex geographic information so that it can fit within the confines of a map. Generalisation entails picking key elements, eliminating clutter, and simplifying feature representation while keeping spatial linkages and map legibility. Cartographers design, modify, and produce maps using specialised software and tools. These tools allow for exact feature location, labelling, map creation, and output to a variety of formats suited for printing or digital distribution.

#### Data Integration

Geographic Information System involves combining and integrating multiple geospatial data types from different sources. This information comes from surveys, public databases, sensor networks, and other outside sources. Data integration makes certain that pertinent data is available for analysis and mapping

Data integration may entail working with data at various scales and levels of detail. To minimise the level of detail while keeping the key spatial linkages, generalisation techniques are used. This is frequently required when combining datasets of varying resolutions or making maps of varying scales.

To represent changes in the real world, integrated spatial datasets must be updated and maintained on a regular basis. This comprises the incorporation of new data, the removal of obsolete information, and the management of changes in attribute values or spatial bounds over time.



IV. EXPERIMENTAL RESULTS

All Design Map

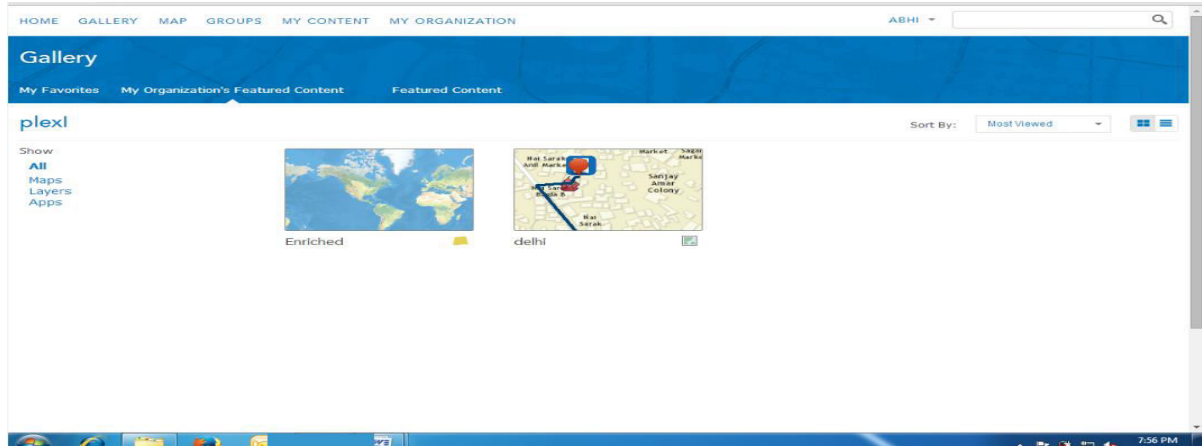


Fig. 1 This page shows that the time we logged in, here one option is called gallery whatever designing we design that can be stored here

Base maps show

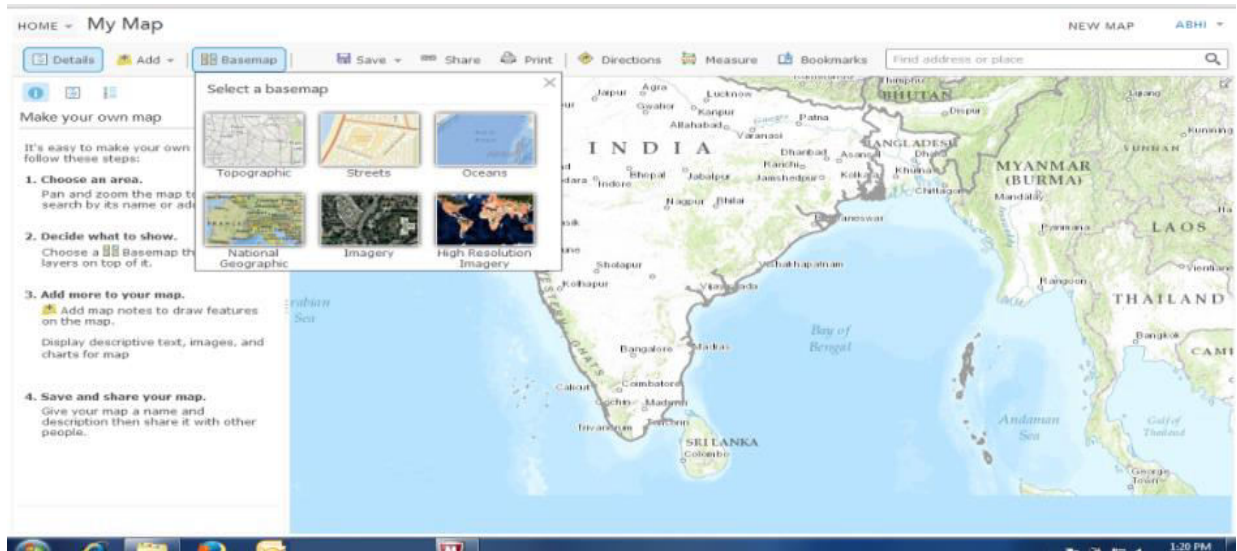


Fig. 2 This page displays different type of base maps



Performance Analysis

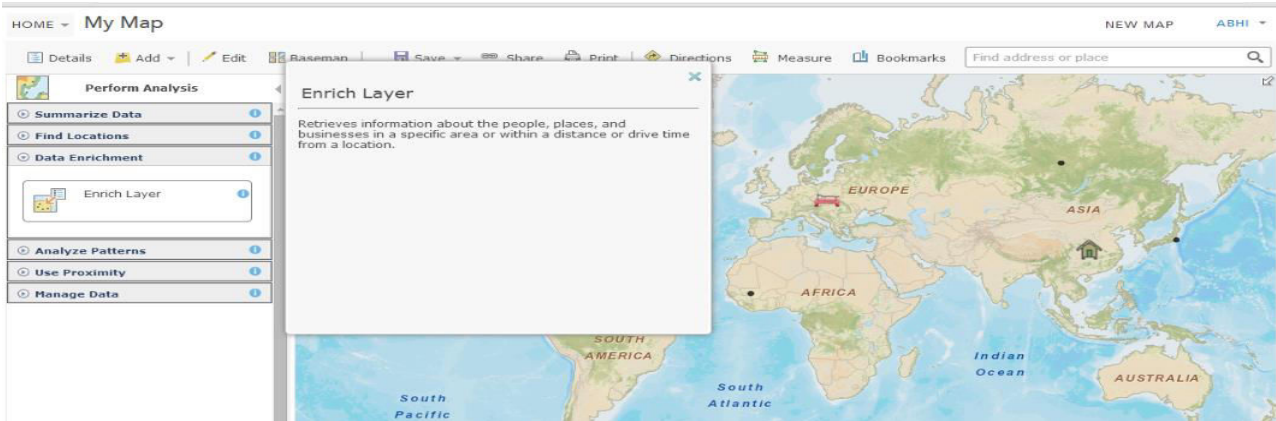


Fig. 3 In this page it displays different type of data science analysis option

Control User Page

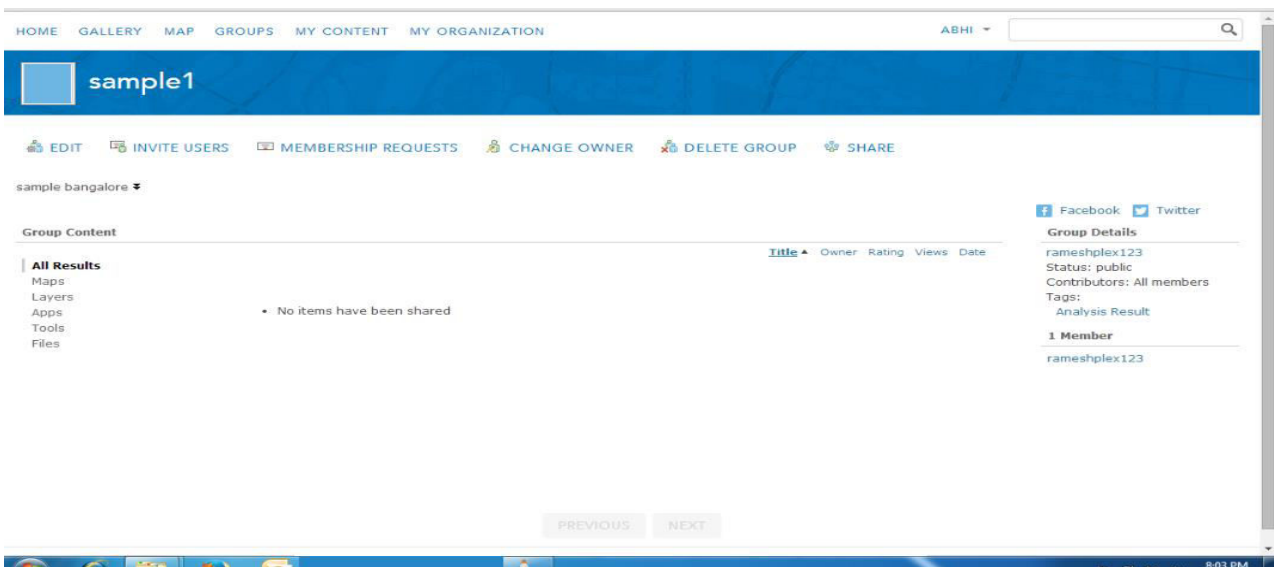


Fig. 4 In This Page we can get group Option.

V. CONCLUSION

The Cartography operations were carried out to ensure that the necessary associations were easily accessible. The technology have many links layered functionalities, enabling the integration of a variety of map elements. Multiple types of base maps can be utilised for various methods of reference, allowing for the best exploration and providing many layer information preferences. Already aware about the several parties who are involved and that various stage maps will be developed, it can be organised effectively. Any sort of integrated cooperative can readily be used to guide this necessary component modification. The system supports multiple layer customization and reusability, making it possible to complete a variety of operational duties.

REFERENCES

[1] Davis, L. R., K. A. Fishburn, H. Lestinsky, L. R. Moore, and J. L. Walt. 2019. "US Topo Product Standard (Techniques and Methods 11–B2)." <https://pubs.er.usgs.gov/publication/tm11B2>

[2] Sugarbaker, L. J., and W. J. Carswell, Jr. 2011. The National Map - Fact Sheet 2011–3042.



|| Volume 12, Issue 7, July 2023 ||

| DOI:10.15680/IJIRSET.2023.12070041 |

- [3] <https://viewer.nationalmap.gov/basic/>
- [4] <https://store.usgs.gov/>
- [5] <https://ngmdb.usgs.gov/topoview/>
- [6] <https://edrnnet.com/wp-content/uploads/2014/08/US-TopoMap-Symbols.pdf>
- [7] [https://prd-wret.s3-us-west-2.amazonaws.com/assets/palladium/production/s3f-public/atoms/files/USTopo\\_quickstart.pdf](https://prd-wret.s3-us-west-2.amazonaws.com/assets/palladium/production/s3f-public/atoms/files/USTopo_quickstart.pdf)



Impact Factor: 8.423



# INTERNATIONAL JOURNAL OF INNOVATIVE RESEARCH

IN SCIENCE | ENGINEERING | TECHNOLOGY

 9940 572 462  6381 907 438  [ijirset@gmail.com](mailto:ijirset@gmail.com)



[www.ijirset.com](http://www.ijirset.com)

Scan to save the contact details