



e-ISSN: 2319-8753 | p-ISSN: 2347-6710

# IJRSET

International Journal of Innovative Research in  
**SCIENCE | ENGINEERING | TECHNOLOGY**



# INTERNATIONAL JOURNAL OF INNOVATIVE RESEARCH

IN SCIENCE | ENGINEERING | TECHNOLOGY

Volume 13, Issue 3, March 2024

**ISSN** INTERNATIONAL  
STANDARD  
SERIAL  
NUMBER  
INDIA

Impact Factor: 8.423

9940 572 462

6381 907 438

[ijirset@gmail.com](mailto:ijirset@gmail.com)

[www.ijirset.com](http://www.ijirset.com)



# EDUSYNC: Uniting Learning, Collaboration and Management

Venkata Gayathri Dammala, Narne Renuka Chowdary, Nikhil Satya Surya Datta Vanapalli,  
Sai Sree Deepthi Golu

U.G. Students, Department of CSE (IoT, Cyber Security including Blockchain Technology), Vasireddy Venkatadri  
Institute of Technology, Guntur, Andhra Pradesh, India

**ABSTRACT:** EDUSYNC is an integrated online platform catering to both students and faculty members in any educational institute. With secure login credentials provided by the admin, users access personalized profiles showcasing academic and personal details. Students can view results, performance metrics, and attendance records. A dedicated blog section allows students to share articles, while faculty members can upload academic resources and post blogs. Faculty also have access to student profiles and can manage blog content. The Data Entry Officer ensures profile accuracy and updates attendance records. Admin oversees all user operations, including profile creation and credential management. EDUSYNC's three main sections Academic Resources, Blogs, and Student Information offer a collaborative and efficient educational environment.

**KEYWORDS:** EDUSYNC, MongoDB, Express JS, React JS, Node JS, APIs, Frontend, Backend.

## I. INTRODUCTION

The advent of digital technologies has revolutionized the landscape of education, showing up in an era of enhanced collaboration and accessibility. In this context, the development of EDUSYNC, a dynamic online platform, emerges as a pioneering endeavor aimed at fostering seamless interaction between students and faculty members within academic institutions. Leveraging the power of the MERN (MongoDB, Express.js, React.js, Node.js) technology stack, EDUSYNC epitomizes innovation and efficiency in educational management systems.

EDUSYNC offers a multifaceted approach to academic engagement, providing a sophisticated yet user-friendly interface for users across various roles. By integrating secure login mechanisms facilitated by the admin, the platform ensures controlled access to personalized profiles for students, faculty, and administrators. Through MERN technology, EDUSYNC enables real-time retrieval and display of critical academic data, including results, performance metrics, and attendance records, empowering users with comprehensive insights into their educational journey.

One of the hallmark features of EDUSYNC lies in its versatility and adaptability to diverse educational needs. The utilization of React.js enables seamless navigation and interactive user experiences, while MongoDB facilitates efficient data storage and retrieval. Additionally, Node.js facilitates the creation of robust server-side applications, ensuring the scalability and performance of the platform even amidst increasing user traffic.

In essence, EDUSYNC represents a paradigm shift in educational management, transcending traditional boundaries and redefining the dynamics of student-faculty collaboration. Through the fusion of cutting-edge technology and pedagogical innovation, EDUSYNC paves the way for a more interconnected and empowered academic community, poised to thrive in the digital age.

## II. LITERATURE SURVEY

### MONGODB:

MongoDB is a NoSQL database, which means it doesn't use the traditional relational database tables and rows. It stores data in flexible, JSON-like documents called BSON (Binary JSON), making it easy to work with data in the same format as JavaScript objects.

MongoDB is known for its scalability and high performance, particularly for applications with large amounts of data or those requiring frequent updates. Its flexible schema design allows for easy adaptation to evolving application requirements, making it suitable for agile development processes.

**EXPRESS JS:**

A minimal and flexible Node.js web application framework that provides a robust set of features for building web servers and APIs. It simplifies the process of handling HTTP requests and responses, routing, middleware integration, and error handling. Express.js is highly customizable, allowing developers to create scalable and efficient web applications with minimal boilerplate code. It has a large ecosystem of middleware and extensions, enabling developers to add additional functionality to their applications easily.

**REACT JS:**

It utilizes a component-based architecture, where UI elements are broken down into reusable and encapsulated components. React.js uses a declarative programming paradigm, which means developers describe what they want the UI to look like, and ReactJS takes care of updating the DOM efficiently. It supports server-side rendering, enabling developers to render React components on the server and send them to the client for faster initial page loads and better SEO.

**NODEJS:**

A server-side JavaScript runtime built on the V8 JavaScript engine. It allows developers to execute JavaScript code outside of a web browser, making it possible to build full-stack applications entirely in JavaScript. Node.js uses an event-driven, non-blocking I/O model, which makes it lightweight and efficient for handling concurrent connections and I/O-bound tasks. It has a vast ecosystem of third-party modules available through npm (Node Package Manager), providing developers with access to a wide range of tools and libraries for building web applications.

Figure 1 is the working of mern stack in EDUSYNC which represents the complete process of how the application works.

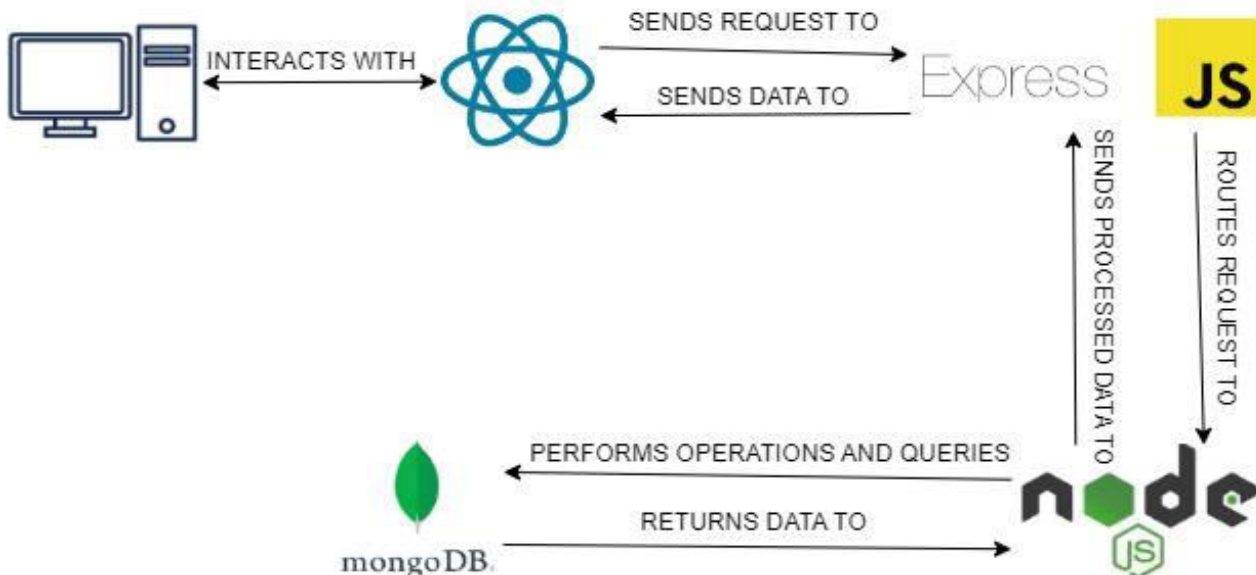


Figure 1: Working of MERN stack

**III. PROPOSED METHODOLOGY**

In EDUSYNC, the MERN stack harmoniously manages data flow across modules. [1] MongoDB, the NoSQL database, serves as the centralized repository for diverse datasets such as user profiles, academic records, and blog content. Its document-oriented structure allows for flexible data modeling, ensuring seamless integration and retrieval of information across the platform. Express.js [1], the backend framework, facilitates data exchange between client-side

and server-side components. It processes HTTP requests initiated by React.js components, communicates with MongoDB for data retrieval or storage, and manages routing through middleware integration [2].

Figure 2 represents the Architecture of the EDUSYNC and the connectivity between the components used in the application. On the front end, React.js plays a pivotal role in rendering dynamic user interfaces and facilitating user interactions. React components interact with Express.js endpoints, leveraging React's state management for UI consistency. Meanwhile, Node.js powers server-side logic, handling incoming requests from Express.js, executing business logic, and interfacing with MongoDB for data operations. This cohesive ecosystem ensures a smooth data flow process, enabling EDUSYNC to deliver a responsive educational platform tailored to the needs of students, faculty, and administrators. Through the efficient collaboration of MongoDB, Express.js, React.js, and Node.js, EDUSYNC optimizes data processing, enhancing the user experience for all stakeholders involved.

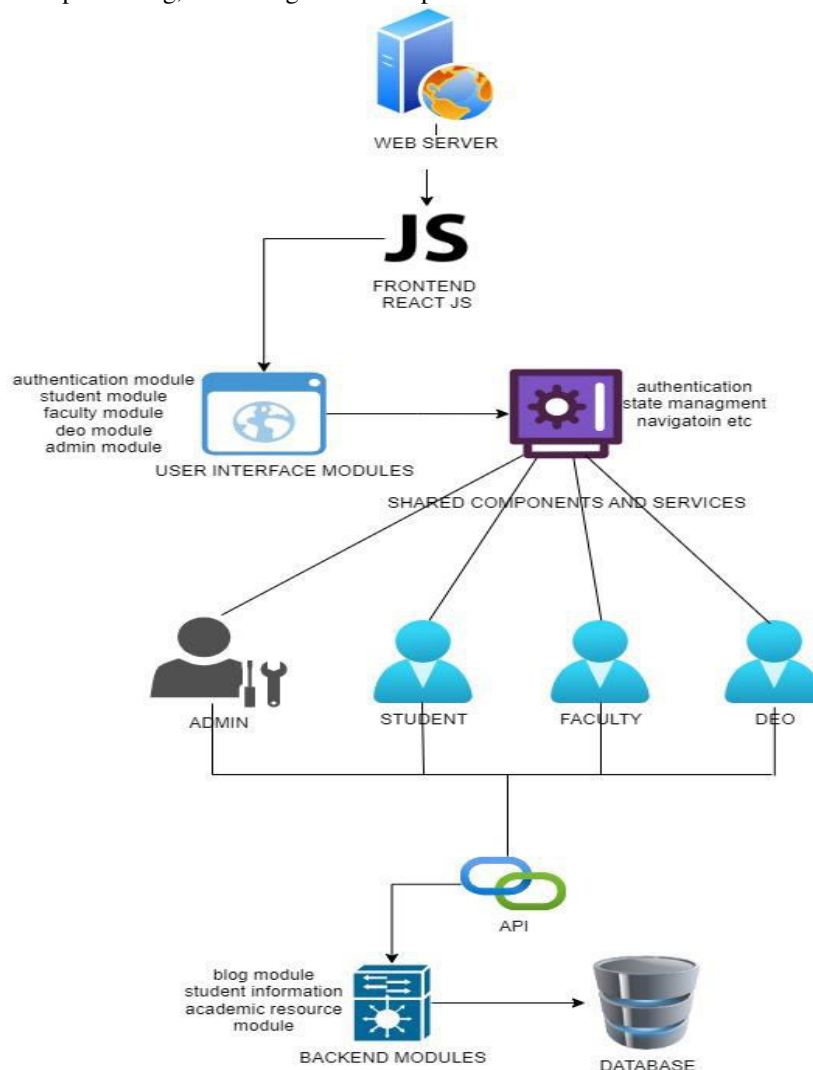


Figure 2: Architecture of EDUSYNC

#### IV. USERS IN EDUSYNC

**4.1 Administrator:** The administrator serves as the linchpin of the educational website, overseeing its entirety and ensuring smooth operation. Their responsibilities encompass the management of user accounts and credentials for students, faculty, and Data Entry Officers (DEOs), alongside maintaining the integrity of data. Additionally, administrators upload results onto the platform, regulate access permissions, and supervise the creation and deletion of





profiles. Their paramount concern is the overall security and functionality of the website, ensuring it operates seamlessly.

**4.2 Data Entry Officer:** DEOs play a pivotal role in managing data and ensuring its accuracy on the platform. Their responsibilities include rectifying inaccuracies in student profiles and updating attendance records. Collaborating closely with the administrator, DEOs assist in maintaining precise and up-to-date information across the website.

**4.3 Student:** Students, the primary users of the platform, leverage its resources for academic enrichment. They have the privilege of accessing personal and academic information, submitting blogs on diverse topics, and browsing through academic resources, including downloadable course materials. Upholding professionalism and appropriateness in their interactions, students contribute to the collaborative learning environment fostered by the website.

**4.4 Faculty:** Faculty members, entrusted with guiding students' academic journey, actively engage with the platform to facilitate teaching and learning. They manage student profiles, contribute blog entries for student consumption, and curate academic resource documents for their respective courses. Additionally, faculty members play a crucial role in maintaining the integrity of student interactions by monitoring and moderating blog submissions for appropriateness.

In essence, each stakeholder in the educational website ecosystem plays a distinct yet interconnected role in ensuring its effectiveness. Through collaborative efforts, administrators, DEOs, students, and faculty members contribute to the seamless functioning of the platform, fostering a conducive environment for learning and academic exploration.

## V. MODULES AND THEIR FUNCTIONALITIES IN EDUSYNC

### 5.1 Authentication Module:

Manages user authentication, including login, logout, and token-based authentication.

### 5.2 Student Module:

Handles functionalities related to students, such as registration, profile management, and accessing student-specific resources.

### 5.3 Faculty Module:

Provides features for faculty members, including profile management, course management, and interaction with students.

### 5.4 Data Entry Operator Module:

Supports data entry operators in managing and inputting data into the system, ensuring data accuracy and integrity.

### 5.5 Admin Module:

Administers system-wide operations, including user management, permissions, and overall system configuration.

### 5.6 Blog Module:

Facilitates the creation, publication, and management of blogs, allowing users to share insights, articles, and discussions.

### 5.7 Academic Resource Management Module:

Manages academic resources such as books, journals, and research materials, ensuring accessibility and organization.

### 5.8 Student Information Management Module:

Handles comprehensive student information, including academic records, attendance, and performance evaluations.

Figure 3 describes the control flow of the modules that are available in the EDUSYNC.

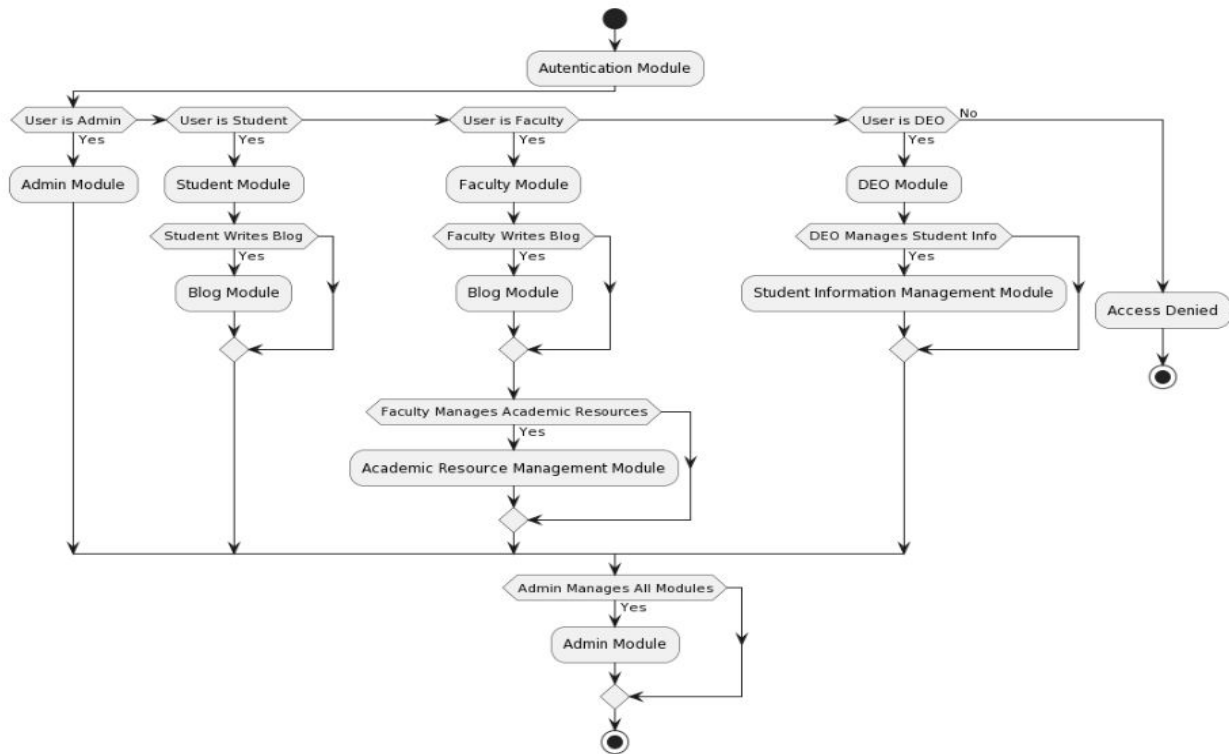


Figure 3: Control flow of modules in EDUSYNC

## VI. EXPERIMENTAL RESULTS WITH FIGURES

### 6.1 FRONT END:

For the implementation of User Authentication and Profile Management, certain components are developed.

**Login page component:** The Login Page component handles user login based on their role using state and Axios for backend communication. It validates inputs, sends requests to API endpoints, and stores tokens for successful logins, utilizing react-router for navigation [2].

**Registration page component:** React component for a registration page (Register Page) that validates user inputs, sends registration requests to backend API endpoints based on the selected role (admin, student, faculty, DEO), and includes navigation links to other pages.

The App component configures routing with React Router for different pages. It manages state variables using useState and utilizes components for various functionalities like user registration and data manipulation. Routes are defined using React Router's Routes and Route components, without importing additional modules beyond React and React Router.

**Storage component:** Storing authentication tokens in browser storage enables persistent authentication, ensuring users remain logged in across sessions. It facilitates user identification and access control based on roles (student, admin, faculty, DEO). The approach ensures state persistence, maintaining user authentication status during navigation. Utilizing local storage enhances security compared to storing tokens in memory, improving the overall user experience. It simplifies access to restricted areas of the application, contributing to a seamless user journey. Overall, managing authentication tokens in local storage enhances security, usability, and user experience in web applications.

**Dashboard component:** The Dashboard component utilizes functions from the "Config"(user-defined) module to check user authentication status and display relevant links. It also utilizes the useNavigate hook from "react-router-

dom" for user redirection. No additional modules beyond React and "react-router-dom" are imported or used in this component.

**Home page component:** The Home component renders a dashboard layout with navigation links based on user authentication. It fetches and displays student and faculty blogs from the backend using Axios. Faculty users can delete blogs, and it manages state and API calls with React hooks like useEffect and useState. It also imports modules like useSelector from "react-redux" and MdDelete icon from "react-icons/md".



*Figure 4: Home page of EDUSYNC*

## 6.2 BACKEND:

For the backend, Mongo DB is used as a database, and collections are used to create databases for storing various types of data in Mongo DB. For the EDUSYNC scenario, collections created are admins, blogfaculties, blogstudents, does, faculties, resources, students.

These collections would store information about students, faculties, resources (id, type of file), blogs(blogid, images, name of the blog, content), and deos including their usernames, email addresses, and hashed passwords.

### 6.2.1 Controllers:

The controllers in the Node.js application handle various routes using Express.js. The admin controller utilizes middleware like asyncHandler to manage asynchronous functions and modules like bcrypt for password hashing and jwt for JWT token generation. Functions like registerAdmin and loginAdmin handle admin registration and login, validating input fields, and interacting with the database. The blog controller manages student and faculty blogs, providing functions for creating, fetching, and deleting blogs. Modules used include express-async-handler, bcrypt, jwt, and Mongoose for MongoDB interaction. The DEO controller handles DEO registration and login, ensuring input validation, password hashing, and token generation upon successful authentication. Overall, these controllers facilitate user authentication, blog management, and database interaction within the application.

## VII. WORKING OF EDUSYNC

### 7.1 Front end and Backend Connection:

In a MERN stack application, the backend, developed with Node.js and Express.js, manages business logic, database interactions, and API endpoints for CRUD operations. Frontend development relies on React.js, where components render the user interface and facilitate user interaction. These components utilize Axios or the built-in fetch API to communicate with backend endpoints, sending HTTP requests for data retrieval or manipulation. State management,



typically handled by Redux or the Context API, allows components to share and update states across the application. Authentication and authorization mechanisms are implemented on the backend, with users logging in to obtain authentication tokens for subsequent requests, ensuring secure access to resources. This architecture enables seamless communication between the front end and back end, facilitating data exchange and user interaction within the application [6].

## 7.2 Backend and MongoDB Connection:

The Backend connects to a MongoDB database using Mongoose, an ODM (Object Data Modeling) library for MongoDB and Node.js. It defines an asynchronous function named `connected` that attempts to establish a connection to the MongoDB database specified in the `process.env.CONNECTION_STRING` environment variable. If the connection is successful, it logs the host and database name. If an error occurs during the connection attempt, it logs the error and exits the Node.js process with an exit code of 1. This module exports the `connect` function, allowing it to be imported and used in other parts of the application.

Figure 4 represents the complete website where students, faculty, and deos can integrate under one application.

## VIII. CONCLUSION

In conclusion, EDUSYNC revolutionizes academic management by offering a dynamic platform that empowers students, faculty, and administrators alike. By providing seamless access to personalized profiles, academic resources, and interactive features like blogs and results, it fosters a vibrant learning ecosystem. This innovative approach not only enhances administrative efficiency but also cultivates a collaborative learning environment where knowledge-sharing thrives. With its user-friendly interface and comprehensive functionality, EDUSYNC emerges as an indispensable tool for modern education, driving excellence and innovation in student management and learning outcomes.

## REFERENCES

- [1] E. G. Yu et al., "Full Stack Web Development of a Geospatial Information Service System for Intelligently Irrigated Agriculture," 2019 8th International Conference on Agro-Geoinformatics (Agro-Geoinformatics), Istanbul, Turkey, 2019, pp. 1-6, doi: 10.1109/Agro-Geoinformatics.2019.8820551.
- [2] Badru, Awwal & Vasudevan, Vani & Lingam, Govinda & Khan, M.G.M.. (2022). MERN Stack Web-Based Education Management Information Systems for Pacific Island Countries. SN Computer Science. 4. 10.1007/s42979-022-01457-7.
- [3] <https://www.ijfmr.com/papers/2024/1/9125.pdf>
- [4] <https://link.springer.com/article/10.1007/s42979-022-01457-7>
- [5] <https://ijemr.vandanapublications.com/index.php/ijemr/article/download/997/851>
- [6] Jafari, Seyed & Salem, Suha & Moaddab, Mohaddece & Salem, Sharif. (2015). Learning Management System (LMS) success: An investigation among the university students. 64-69. 10.1109/IC3e.2015.7403488.





INTERNATIONAL  
STANDARD  
SERIAL  
NUMBER  
INDIA



# INTERNATIONAL JOURNAL OF INNOVATIVE RESEARCH

IN SCIENCE | ENGINEERING | TECHNOLOGY

 9940 572 462  6381 907 438  [ijirset@gmail.com](mailto:ijirset@gmail.com)



[www.ijirset.com](http://www.ijirset.com)

Scan to save the contact details