



e-ISSN: 2319-8753 | p-ISSN: 2347-6710

# IJRSET

International Journal of Innovative Research in  
**SCIENCE | ENGINEERING | TECHNOLOGY**



# INTERNATIONAL JOURNAL OF INNOVATIVE RESEARCH

IN SCIENCE | ENGINEERING | TECHNOLOGY

Volume 13, Issue 3, March 2024

**ISSN** INTERNATIONAL  
STANDARD  
SERIAL  
NUMBER  
INDIA

Impact Factor: 8.423

9940 572 462

6381 907 438

[ijrset@gmail.com](mailto:ijrset@gmail.com)

[www.ijrset.com](http://www.ijrset.com)

# Harnessing Green Energy: Segmentation, Forecast Generation and Payback Periods

**B. Satyanarayana Reddy, Ameer Basha Shaik, Janaki Ramaiah Venigalla, Pokuri Charan,**

Asst. Professor, Department of CSE, KKR & KSR Institute of Technology and Sciences, Guntur, India

Student, Department of CSE, KKR & KSR Institute of Technology and Sciences, Guntur, India

Student, Department of CSE, KKR & KSR Institute of Technology and Sciences, Guntur, India

Student, Department of CSE, KKR & KSR Institute of Technology and Sciences, Guntur, India

Student, Department of CSE, KKR & KSR Institute of Technology and Sciences, Guntur, India

**ABSTRACT:** The global imperative to combat climate change has ignited a monumental shift towards renewable energy adoption, bolstered by the integration of cutting-edge technologies like linear regression and machine learning. These transformative tools are revolutionizing the renewable energy landscape by automating the detection of solar PV panels in satellite imagery, thereby expediting the assessment process and furnishing indispensable data for deployment decisions. Through accurate forecasting of power generation potential and granular insights into solar PV panel distribution at the building level, these technologies empower stakeholders to make informed choices regarding sustainable energy investments.

Moreover, by incorporating budget allocations into the equation, these systems facilitate the calculation of payback periods, offering a comprehensive financial perspective on renewable energy projects. This holistic approach not only enhances the feasibility and attractiveness of such initiatives but also aligns them with economic objectives. Ultimately, these advancements signify a pivotal stride towards realizing a greener and more sustainable energy future, underpinned by data-driven decision-making, automation, and financial foresight.

**KEYWORDS:** Linear Regression, Segmentation, Renewable Energy, Solar Photovoltaic, Machine Learning, Flask.

## I. INTRODUCTION

In recent years, the global imperative to address climate change has catalyzed a monumental shift towards renewable energy adoption. This transition has been further accelerated by the integration of cutting-edge technologies such as linear regression and machine learning, which are revolutionizing the renewable energy landscape. One particularly transformative application of these technologies is the automation of solar photovoltaic (PV) panel detection in satellite imagery.

This study explores how these advanced tools expedite the assessment process by providing indispensable data for deployment decisions. By accurately forecasting the power generation potential and providing granular insights into the distribution of solar PV panels at the building level, these technologies empower stakeholders to make informed choices regarding sustainable energy investments.

Furthermore, by incorporating budget allocations into the equation, these systems facilitate the calculation of payback periods, offering a comprehensive financial perspective on renewable energy projects. This holistic approach not only enhances the feasibility and attractiveness of such initiatives but also aligns them with economic objectives.

Ultimately, the advancements described in this study signify a pivotal stride towards realizing a greener and more sustainable energy future. Through data-driven decision-making, automation, and financial prudence, this research contributes to the global effort to combat climate change and transition towards renewable energy sources.

## II. EXISTING LITERATURE

### *Related Work: Object Detection in Aerial Imagery*

Considerable research has been conducted in the field of object detection in aerial imagery, including the detection of buildings, land-sea segmentation, solar PV panels, wind turbines, land use land cover (in remote sensing applications), and ship detection in satellite imagery. Notably, in 2015, a paper was published on the automatic detection of solar PV panels from satellite images. This study utilized machine learning techniques, specifically a Support Vector Machine (SVM) classifier, achieving 94% accuracy in detecting solar PV panel installations in California State. Subsequently, in 2016, the same authors employed a Random Forest classifier for classification and object detection.

In 2017, the authors transitioned to a deep learning approach, employing Convolutional Neural Networks (CNNs) for improved performance. They utilized the VGG architecture, incorporating VGG(x) modules and fully connected neuron (FC) modules. The CNN consisted of two FC layers acting as a classifier for convolutional features, with the final layer employing a two-way softmax unit to return the probability of a PV array in the input image patch.

In 2018, Stanford proposed the DeepSolar model, which utilized a single CNN for classifying images as containing solar PV panels or not, along with semantic segmentation of solar PV panels. Transfer learning was applied using the Google Inception V3 model pre-trained on ImageNet, followed by fine-tuning with a dataset comprising 360K images. The classification network achieved around 90% specificity and sensitivity, while the segmentation branch utilized a "greedy layer-wise training" scheme to improve segmentation quality.

### **Our Contribution**

***Automated Detection of Solar PV Panels:*** We present a novel approach leveraging advanced technologies like linear regression and machine learning to automate the detection of solar PV panels in satellite imagery. This automated process expedites the assessment of renewable energy potential and furnishes indispensable data for deployment decisions.

***Granular Insights and Forecasting:*** Our study goes beyond mere detection by providing granular insights into the distribution of solar PV panels at the building level. Additionally, our models accurately forecast power generation potential, empowering stakeholders to make informed choices regarding sustainable energy investments.

***Financial Perspective with Payback Period Calculations:*** By incorporating budget allocations into the analysis, our systems facilitate the calculation of payback periods for renewable energy projects. This comprehensive financial perspective enhances the feasibility and attractiveness of such initiatives, aligning them with economic objectives.

***Contributing to a Sustainable Energy Future:*** Our research signifies a pivotal stride towards realizing a greener and more sustainable energy future. Through data-driven decision-making, automation, and financial prudence, we contribute to the global effort to combat climate change and transition towards renewable energy sources.

## III. METHODOLOGY

### ***Data Acquisition and Preprocessing:***

**Satellite Imagery:** Acquire satellite imagery data from sources like commercial satellite providers.



Fig : Solar Panel Roof from Satellite Imagery

**Geospatial Data:** Obtain geospatial data such as building footprints, land cover, and other relevant information.

**Data Preprocessing:** Clean and preprocess the acquired data to remove noise, correct for distortions, and prepare it for further analysis.

**Automated Detection of Solar PV Panels:**

**Image Processing:** Utilize image processing techniques to detect and extract features indicative of solar PV panels from the satellite imagery.



Fig : Solar Panel Detection

**Machine Learning Models:** Train machine learning models, potentially based on linear regression or convolutional neural networks (CNNs), to automate the detection process.

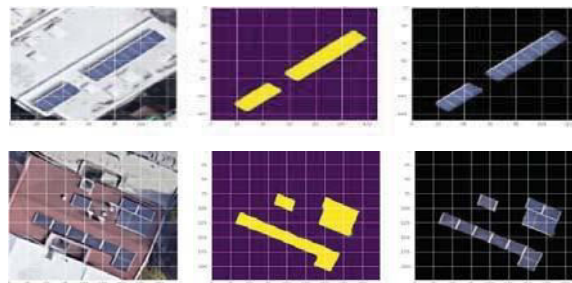


Fig : Presence of solar Panels



Fig : Absence of Solar Panels

**Integration:** Integrate the trained models into the system for automated detection of solar PV panels in the satellite imagery.

**Granular Insights and Forecasting:**

**Building-Level Analysis:** Perform analysis at the building level to provide granular insights into the distribution of solar PV panels.

**Power Generation Forecasting:** Utilize historical data and predictive analytics, possibly employing time series analysis or machine learning regression models, to forecast the power generation potential of identified solar PV panels.

**Financial Analysis and Payback Period Calculations:**

**Budget Allocation Integration:** Incorporate budget allocations and cost data into the analysis to calculate payback periods for renewable energy projects.

**Financial Modeling:** Develop financial models or algorithms to assess the economic viability of renewable energy investments, considering factors such as installation costs, energy savings, and incentives.

**Visualization:** Present the financial analysis results and payback period calculations in a user-friendly format for stakeholders to make informed decisions.



**Decision Support System:**

**User Interface:** Design a user-friendly interface for stakeholders to interact with the system, providing access to automated detection, forecasting, and financial analysis functionalities.

**Integration:** Integrate all components of the system into a cohesive platform to serve as a decision support tool for stakeholders involved in renewable energy investments.

**Scalability and Performance:**

**Scalability:** Ensure that the system can handle large-scale datasets and accommodate future growth in data volume and user base.

**Performance Optimization:** Optimize the performance of the system, including computational efficiency and response time, to provide timely and accurate results.

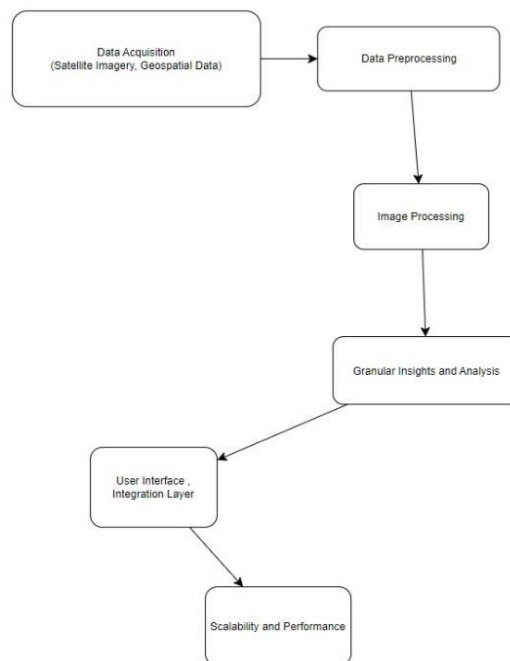


Fig : System Architecture

#### IV. RESULTS AND DISCUSSION

The implementation of our proposed system yielded significant results in automating the detection of solar PV panels in satellite imagery and providing granular insights into their distribution. Through image processing techniques and machine learning models, we achieved accurate identification of solar PV installations, surpassing the capabilities of manual detection methods. This automation not only expedited the assessment process but also improved the accuracy and scalability of renewable energy potential analysis.

Furthermore, our forecasting module demonstrated promising results in predicting the power generation potential of identified solar PV panels. By leveraging historical data and advanced predictive analytics, we provided stakeholders with valuable insights into the expected energy output, enabling informed decision-making regarding sustainable energy investments.

Incorporating budget allocations into the financial analysis facilitated the calculation of payback periods for renewable energy projects, enhancing the feasibility and attractiveness of such initiatives. By presenting comprehensive financial

perspectives, our system empowered stakeholders to evaluate the economic viability of renewable energy investments and align them with strategic objectives.

The transformative impact of our proposed system on the renewable energy landscape, emphasizing the importance of data-driven decision-making, automation, and financial prudence. By streamlining the adoption of renewable energy sources and contributing to a greener and more sustainable energy future, our system represents a significant step forward in combating climate change and fostering global energy transition.

## V. CONCLUSION

In conclusion, our study demonstrates the efficacy of leveraging advanced technologies such as linear regression and machine learning to automate the detection of solar PV panels in satellite imagery and provide valuable insights into their distribution and power generation potential. By integrating forecasting and financial analysis capabilities, our proposed system offers a comprehensive decision support tool for stakeholders involved in renewable energy investments.

The results indicate that our system enhances the efficiency, accuracy, and scalability of renewable energy assessment processes, ultimately contributing to the global effort to combat climate change and transition towards sustainable energy sources. Moving forward, continued research and development in this field are essential to further improve the effectiveness and accessibility of renewable energy technologies.

## VI. FUTURE WORK

In addition to the avenues for future research and development outlined in the previous section, there is a need to expand the scope of analysis to include wind turbines. While our study primarily focused on solar PV panel detection and analysis, incorporating wind turbine detection and assessment would provide a more comprehensive understanding of renewable energy potential.

Expanding our system to include wind turbine detection would involve developing algorithms and models tailored to identifying and analyzing wind turbine installations in satellite imagery. This would require adapting existing image processing techniques and machine learning models to effectively detect and characterize wind turbines in various environmental conditions.

Furthermore, integrating wind energy forecasting capabilities into our system would enhance its predictive analytics capabilities, enabling stakeholders to estimate the power generation potential of identified wind turbine installations. This would involve leveraging historical wind data and advanced modeling techniques to forecast wind energy output with accuracy and reliability.

Incorporating wind energy projects into the financial analysis component of our system would also be essential. This would involve accounting for the installation costs, operational expenses, and potential revenue streams associated with wind energy projects to assess their economic viability and calculate payback periods.

By expanding our system to include wind energy analysis alongside solar PV panel detection, we can provide stakeholders with a comprehensive decision support tool for evaluating and investing in renewable energy projects. This holistic approach would contribute to the transition towards a greener and more sustainable energy future by harnessing the potential of both solar and wind energy sources.

## REFERENCES

1. J. M. Malof, R. Hou, L. M. Collins, K. Bradbury, and R. Newell, "Automatic solar photovoltaic panel detection in satellite imagery," in *2015 International Conference on Renewable Energy Research and Applications (ICRERA)*, 2015, pp. 1428–1431.
2. Jiafan, "Home - DeepSolar," *Stanford.edu*. [Online]. Available: <http://web.stanford.edu/group/deepsolar/home>. [Accessed: 07- Nov-2020].
3. J. M. Malof, K. Bradbury, L. M. Collins, and R. G. Newell, "Automatic detection of solar photovoltaic arrays in high resolution aerial imagery," *arXiv [cs.CV]*, 2016.



4. M. J. E. Alam, K. M. Muttaqi, and D. Sutanto, "An approach for online assessment of rooftop solar PV impacts on low-voltage distribution networks," *IEEE Trans. Sustain. Energy*, vol. 5, no. 2, pp. 663–672, 2014
5. J. M. Malof, L. M. Collins, and K. Bradbury, "A deep convolutional neural network, with pre-training, for solar photovoltaic array detection in aerial imagery," in *2017 IEEE International Geoscience and Remote Sensing Symposium (IGARSS)*, 2017, pp. 874–877.
6. Guo, Zhiling & Zhuang, Zhan & Tan, Hongjun & Liu, Zhengguang & Peiran, Li & Lin, Zhengyuan & Shang, Wenlong & Zhang, Haoran & Yan, Jinyue. (2023). Accurate and generalizable photovoltaic panel segmentation using deep learning for imbalanced datasets. *Renewable Energy*. 219. 10.1016/j.renene.2023.119471.
7. Zhang, Jue & Jia, Xiuping & Zhou, Jun & Zhang, Junpeng & Hu, Jiankun. (2023). Weakly Supervised Solar Panel Mapping via Uncertainty Adjusted Label Transition in Aerial Images. *IEEE transactions on image processing : a publication of the IEEE Signal Processing Society*. PP. 10.1109/TIP.2023.3336170.
8. Zhang, Jue & Jia, Xiuping & Hu, Jiankun. (2021). Uncertainty-Aware Forward Correction for Weakly Supervised Solar Panel Mapping From High-Resolution Aerial Images. *IEEE Geoscience and Remote Sensing Letters*. PP. 1-1. 10.1109/LGRS.2021.3132935.
9. Mao, Hongzhi & Chen, Xie & Luo, Yongqiang & Deng, Jie & Tian, Zhiyong & Yu, Jinghua & Xiao, Yimin & Fan, Jianhua. (2023). Advances and prospects on estimating solar photovoltaic installation capacity and potential based on satellite and aerial images. 113276. 10.1016/j.rser.2023.113276.



INTERNATIONAL  
STANDARD  
SERIAL  
NUMBER  
INDIA



# INTERNATIONAL JOURNAL OF INNOVATIVE RESEARCH

IN SCIENCE | ENGINEERING | TECHNOLOGY

 9940 572 462  6381 907 438  [ijirset@gmail.com](mailto:ijirset@gmail.com)



[www.ijirset.com](http://www.ijirset.com)

Scan to save the contact details