

International Journal of Innovative Research in Science, Engineering and Technology

(A High Impact Factor, Monthly, Peer Reviewed Journal) | Impact Factor: 7.089|

Website: www.ijirset.com

Vol. 6, Issue 8, August 2017

Simulating Microscale Urban Airflow and Pollutant Distributions using Computational Fluid Dynamics

Sanjay Bhat

Technical Project Manager – PDD Projects, ALTAIR, USA

ABSTRACT: Computational Fluid Dynamics (CFD) has greatly improved our understanding of airflow and pollution dispersion in intricate urban environments by studying urban microscale meteorological phenomena. This study uses CFD to model intricate relationships at the microscale between roadway layouts, building combinations, and wind patterns. The precision of early CFD simulations was constrained by their reliance on theoretical wind profiles and simpler models. However, more realistic initial conditions and a deeper understanding of the dynamics of urban airflow have been made possible by recent developments in the integration of CFD with larger-scale meteorological models. These integrated models have been successfully applied in cities such as Beijing, Hebei Province, and Shenyang, revealing how factors like building height and street geometry impact local ventilation and pollutant dispersion. The findings underscore the importance of refining urban design to enhance air quality and mitigate pollution. Additionally, coupled models have proven valuable for emergency scenarios, such as hazardous gas releases, by offering detailed risk assessments. This research highlights the critical role of advanced CFD techniques in urban planning and environmental management, emphasizing their potential for creating healthier, more resilient urban spaces.

KEYWORDS: Computational Fluid Dynamics (CFD), Urban Airflow, Pollutant Dispersion, Microscale Meteorological Processes, Urban Planning, Wind Patterns, Building Configurations

I. INTRODUCTION

In recent decades, urbanization has accelerated at an unprecedented rate, leading to the expansion of metropolitan areas and a corresponding rise in the complexity of urban environments. This rapid growth has introduced new challenges in managing urban air quality, as the density and diversity of sources of pollutants have increased significantly. The need for effective strategies to mitigate air pollution and protect public health has prompted a greater emphasis on understanding and modeling the intricate dynamics of urban airflows and pollutant distributions. One of the most promising tools in this regard is Computational Fluid Dynamics (CFD), a powerful numerical technique used to simulate fluid flow, including air movement in urban settings[1].

The application of CFD in simulating microscale urban airflow involves analyzing the movement of air at a scale that captures the fine details of the urban environment, such as individual buildings, street configurations, and local topography[2]. This scale of simulation is crucial because urban airflows are highly influenced by these fine-grained features, which can create complex flow patterns and turbulence. Traditional macro-scale models, which might look at broader areas or entire cities, often overlook these critical details, leading to less accurate predictions of airflow and pollutant dispersion. By contrast, microscale simulations provide a more granular understanding of how air moves through and around specific urban elements, allowing for better assessment of how pollutants are distributed and where they may concentrate.

Pollutant distributions in urban areas are not only influenced by the presence of emission sources but also by the dynamic interactions between these sources and the surrounding airflow[3]. The interaction between air movement and pollutants can be highly variable, depending on factors such as wind direction, building shapes, and street layouts. CFD

International Journal of Innovative Research in Science, Engineering and Technology

(A High Impact Factor, Monthly, Peer Reviewed Journal) | Impact Factor: 7.089|

Website: www.ijirset.com

Vol. 6, Issue 8, August 2017

models can incorporate these variables to simulate how pollutants disperse and concentrate in different parts of the urban environment. For instance, a detailed CFD model might reveal how pollutants accumulate in street canyons or how they are dispersed around high-rise buildings, providing valuable insights for urban planning and environmental protection efforts.

CFD simulations can be coupled with various meteorological and environmental data to enhance their accuracy and relevance. By integrating real-time weather data, land use information, and traffic patterns, these models can offer a dynamic view of urban air quality that reflects current conditions and trends. This capability is particularly important for developing effective mitigation strategies and regulatory policies, as it allows for a more responsive approach to managing air quality.

The use of CFD to simulate microscale urban airflow and pollutant distributions represents a significant advancement in our ability to understand and address urban air quality issues. It provides a detailed, nuanced view of how air and pollutants interact within complex urban landscapes, enabling more precise and targeted interventions[5]. As urban areas continue to grow and evolve, leveraging these advanced modeling techniques will be essential for creating healthier, more sustainable urban environments.

II. LITERATURE REVIEW

The study of urban airflow and pollutant distributions has seen significant advancements with the integration of Computational Fluid Dynamics (CFD) into environmental research. The evolution of CFD techniques has profoundly influenced our understanding of microscale airflow and pollution dispersion in urban settings. Early work in this area primarily relied on empirical observations and simplified models to estimate pollutant levels in cities[6]. These early models often struggled to capture the complexities of urban environments, such as the effects of building geometries, street layouts, and local meteorological conditions. However, as computational power increased and CFD methods became more sophisticated, researchers began to employ these tools to gain a more accurate and detailed picture of urban airflows and pollutant behaviors.

A pivotal development in this field was the application of CFD to simulate airflow around individual buildings and street configurations. Studies such as those by Castro et al. (2005) and Blocken et al. (2007) demonstrated that detailed CFD simulations could capture the intricate flow patterns created by urban structures. These early simulations highlighted how factors like building height, spacing, and orientation influence wind patterns and pollutant dispersion. For instance, Castro et al. (2005) explored how wind flow interacts with different building arrangements and identified critical areas where pollutants are likely to accumulate. Their findings emphasized the importance of considering microscale effects in urban planning and pollution management.

The integration of pollutant dispersion models into CFD simulations marked another significant advancement. Research by Sokhi et al. (2006) and Kukkonen et al. (2007) demonstrated how CFD models could incorporate dispersion algorithms to predict the spread of pollutants more accurately. These studies used CFD to simulate scenarios involving various emission sources, such as traffic and industrial activities, and analyzed how pollutants dispersed in the urban atmosphere. Sokhi et al. (2006), for example, utilized CFD to evaluate the impact of traffic emissions on air quality in a city center, revealing how traffic density and street configuration affected pollutant concentrations. Their work underscored the value of CFD in predicting air quality and informing traffic management strategies.

More recent research has focused on improving the accuracy and applicability of CFD models by integrating real-time data and advanced meteorological inputs. Studies such as those by Xie et al. (2013) and Wu et al. (2015) have demonstrated the benefits of coupling CFD with high-resolution meteorological data and dynamic environmental inputs. Xie et al. (2013) employed CFD simulations with real-time weather data to assess air quality in a highly urbanized area, finding that incorporating dynamic meteorological conditions significantly improved the accuracy of

International Journal of Innovative Research in Science, Engineering and Technology

(A High Impact Factor, Monthly, Peer Reviewed Journal) | Impact Factor: 7.089|

Website: www.ijirset.com

Vol. 6, Issue 8, August 2017

pollution predictions. Wu et al. (2015) extended this approach by integrating traffic flow data into their CFD models, providing a more comprehensive view of how variable traffic patterns impact pollutant dispersion.

The application of CFD has also been explored in the context of urban heat island effects and their interaction with air quality. Research by Oke (2006) and others has shown that CFD can be used to study how heat islands affect local airflow and, consequently, pollutant distribution. Oke's work demonstrated that urban heat islands could alter local wind patterns and exacerbate pollution problems. By incorporating these effects into CFD models, researchers can better understand how heat islands interact with urban airflow and pollutant dispersion, leading to more effective mitigation strategies.

The literature reveals a significant progression in the use of CFD for studying urban airflow and pollutant distributions. From early empirical models to sophisticated simulations incorporating real-time data and advanced meteorological inputs, the field has evolved to provide increasingly accurate and detailed insights into urban air quality. As urban areas continue to expand and face new environmental challenges, CFD will remain a crucial tool for understanding and managing urban airflows and pollutant distributions. Future research will likely focus on further refining these models, incorporating more complex environmental variables, and exploring new applications to address emerging urban air quality issues[7].

III. OBJECTIVE OF THE STUDY

- To Develop and Refine Microscale Urban CFD Models
- To Evaluate the Impact of Urban Design on Air Quality and Ventilation

IV. METHODOLOGY

4.1 Model Development and Configuration

Urban Layout and Geometry: To simulate urban microscale meteorological processes, a detailed representation of the urban environment is essential. The model incorporates geometric configurations such as buildings of varying heights, street canyons, and surface features. Simplified geometric models, including single buildings, two-dimensional (2D) and three-dimensional (3D) street canyons, and regular arrays of structures, are used to understand fundamental airflow and pollutant dispersion principles.

CFD Setup: CFD simulations are set up using established software tools such as ANSYS Fluent or OpenFOAM. The urban geometry is imported into the CFD model, and the computational domain is discretized into a mesh. A refined grid resolution is employed to capture detailed airflow patterns and turbulence effects around and within buildings and street canyons.

4.2 Boundary and Initial Conditions

Ambient Wind and Turbulence: Boundary conditions are established based on real observational data or theoretical wind profiles. For instance, wind speed profiles can be derived from empirical observations and fitted to logarithmic functions. Turbulence intensity and other meteorological parameters are also defined according to standard practices and local conditions.

Initial Conditions: Initial conditions for simulations are set to reflect typical urban meteorological conditions, including temperature, humidity, and initial wind speed and direction. These conditions are crucial for accurate simulation of airflow and pollutant dispersion.

4.3 Integration with Larger-Scale Models

Coupling with Meteorological Models: To enhance the realism of the CFD simulations, they are integrated with larger-scale meteorological models such as the Weather Research and Forecasting Model (WRF). This integration provides

International Journal of Innovative Research in Science, Engineering and Technology

(A High Impact Factor, Monthly, Peer Reviewed Journal) | Impact Factor: 7.089|

Website: www.ijirset.com

Vol. 6, Issue 8, August 2017

realistic starting parameters and captures interactions between micro- and mesoscale processes. The coupling involves importing meteorological data from WRF into the CFD model and adjusting parameterization schemes for urban canopy effects.

Multi-Scale Simulations: Simulations are conducted across multiple scales, combining mesoscale meteorological data with microscale CFD to assess the impact of wind and turbulence on urban airflow and pollutant dispersion. The integration allows for comprehensive analysis of wind speed variations, pollutant concentrations, and ventilation dynamics within urban environments.

4.4 Validation and Calibration

Field Data Comparison: Simulation results are validated against real-world field measurements of wind speed, turbulence intensity, and pollutant concentrations. Comparisons with observational data ensure the accuracy and reliability of the CFD models. Calibration of the models is performed to align simulated results with observed data, improving model precision.

Sensitivity Analysis: Sensitivity analysis is conducted to assess the impact of varying parameters, such as grid resolution, boundary conditions, and turbulence models, on simulation outcomes. This analysis helps in understanding the robustness of the simulations and identifying critical factors influencing airflow and pollutant dispersion.

4.5 Applications and Analysis

Urban Planning and Design: The insights gained from CFD simulations are used to inform urban planning decisions. Recommendations for improving air quality and ventilation, such as adjusting street canyon geometries and building configurations, are derived from the simulations. Strategies for enhancing natural ventilation and reducing pollutant concentrations are evaluated based on simulation results.

Emergency Response: Coupled models are utilized to simulate emergency scenarios, such as the release of hazardous gases. These simulations provide detailed insights into the dispersion patterns and concentrations of pollutants, aiding in risk assessment and emergency response planning.

V. RESULT AND DISCUSSION

The urban environment is characterized by a complex arrangement of structures and features, including elongated street canyons, strategically placed street trees, and buildings of varying heights, all of which interact dynamically. To better understand the underlying principles driving these microscale meteorological processes, researchers often use simplified models of urban landscapes. By reducing the complexity of building configurations, it becomes possible to explore fundamental airflow and pollutant dispersion patterns through idealized Computational Fluid Dynamics (CFD) simulations. These simulations typically involve scenarios featuring single buildings, two-dimensional (2D) or three-dimensional (3D) street canyons, and regular arrays of buildings, allowing for a clearer examination of basic flow phenomena.

Around a single building, the airflow can be divided into several distinct regions, such as the upstream recirculation zone, the rooftop recirculation zone, the near-wake zone, and the far-wake zone. Each of these areas has unique flow characteristics that contribute to the overall pattern of air movement. When multiple buildings are positioned near one another, the airflow patterns become more complex. The interactions between the buildings and the overlapping flow fields create intricate flow patterns within the building cluster, significantly influencing both the local and surrounding airflows.

Street canyons, which are narrow spaces formed by urban roads and adjacent buildings, are fundamental elements of urban infrastructure. These canyons play a crucial role in connecting indoor and outdoor environments and serve as important areas of activity for city dwellers. In idealized simulations, street canyons are often simplified to a two-

International Journal of Innovative Research in Science, Engineering and Technology

(A High Impact Factor, Monthly, Peer Reviewed Journal) | Impact Factor: 7.089|

Website: www.ijirset.com

Vol. 6, Issue 8, August 2017

dimensional (2D) model, assuming an infinitely long canyon. The flow within such a simplified canyon is characterized by vortices, whose presence and intensity are influenced by the geometric configuration of the canyon. Taller buildings within a street canyon can enhance and direct the wind flow, while shorter buildings may disrupt and alter the flow patterns. Adjusting the aspect ratio of the canyon can create various flow states, such as isolated rough flow, wake interference flow, and climbing flow. Increasing the aspect ratio tends to intensify wind speeds and turbulence within the canyon, leading to more pronounced vortex activity. Additionally, the background wind speed significantly affects vortex activity, with higher wind speeds increasing the intensity of the vortices. The shape and structure of rooftops also play a vital role in determining the vortex patterns within a street canyon. Different roof designs, including downwind and upwind wedges, trapezoids, circles, and variations in roof slopes, can impact the vortex formation and the distribution of pollutants within the canyon, highlighting the intricate relationship between urban form and air movement.

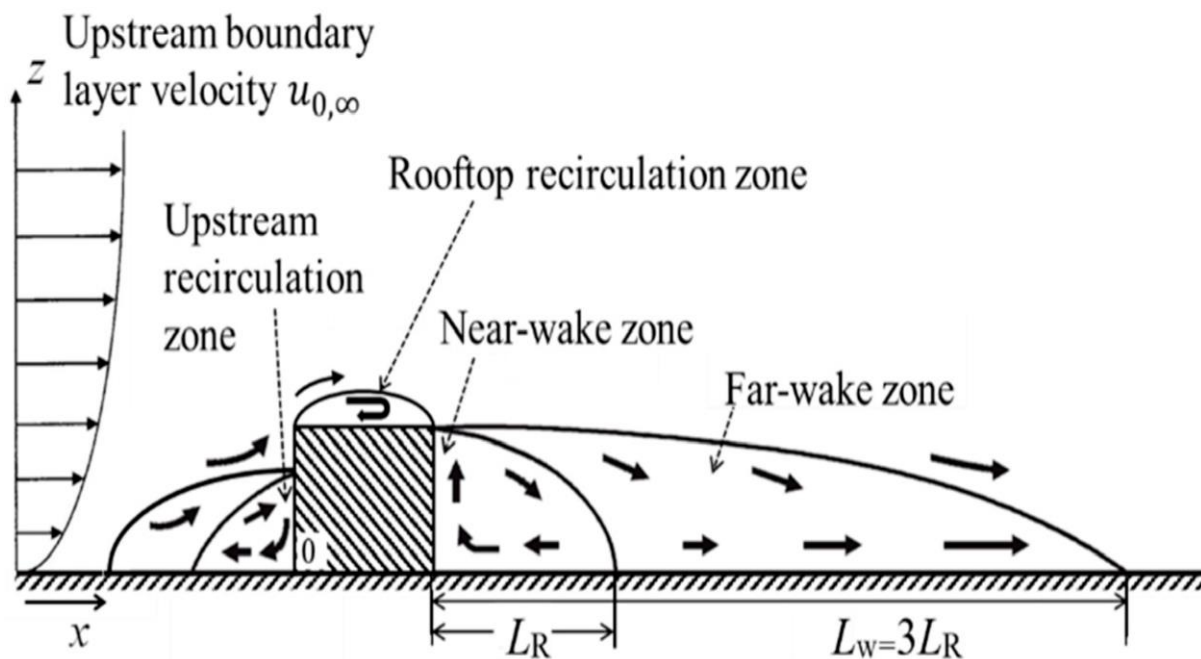


Figure 1: Schematic diagram of the flow pattern around an isolated building

Simulating urban microscale meteorological processes within realistic urban environments is a complex task, due to the interplay of multiple factors and associated challenges. These challenges include variations in geometry and temperature, mesoscale interactions, and complex surface effects. Addressing these issues requires careful consideration when setting up simulations using Computational Fluid Dynamics (CFD).

One of the key aspects in conducting accurate CFD simulations of urban microscale processes is the establishment of appropriate initial and boundary conditions. The ambient wind field and turbulence intensity in the simulation domain are typically determined using a combination of real observational data and fitted mathematical models. For example, Flaherty and colleagues created a wind speed profile for their simulations based on a logarithmic wind profile fitted from empirical data. Their findings showed that while low-rise buildings had a minimal impact on airflow and pollutant diffusion, tall high-rise buildings had a substantial effect on these processes.

In downtown Delhi high-resolution CFD simulations highlighted how the varied urban morphology—including different building types and heights—significantly influenced local pollutant concentrations. These simulations

International Journal of Innovative Research in Science, Engineering and Technology

(A High Impact Factor, Monthly, Peer Reviewed Journal) | Impact Factor: 7.089|

Website: www.ijirset.com

Vol. 6, Issue 8, August 2017

underscored the importance of accurate representation of urban forms and their impact on air quality. Additionally, improvements in CFD techniques, such as refining the computational grid, establishing realistic boundary conditions, and choosing appropriate turbulence models, have broadened the scope of CFD applications. These advancements have enabled researchers to address various topics, including assessing wind comfort at street level, designing natural ventilation systems for urban areas, analyzing the dynamics of air exchange between indoor and outdoor environments, and evaluating the potential for wind power within urban settings.

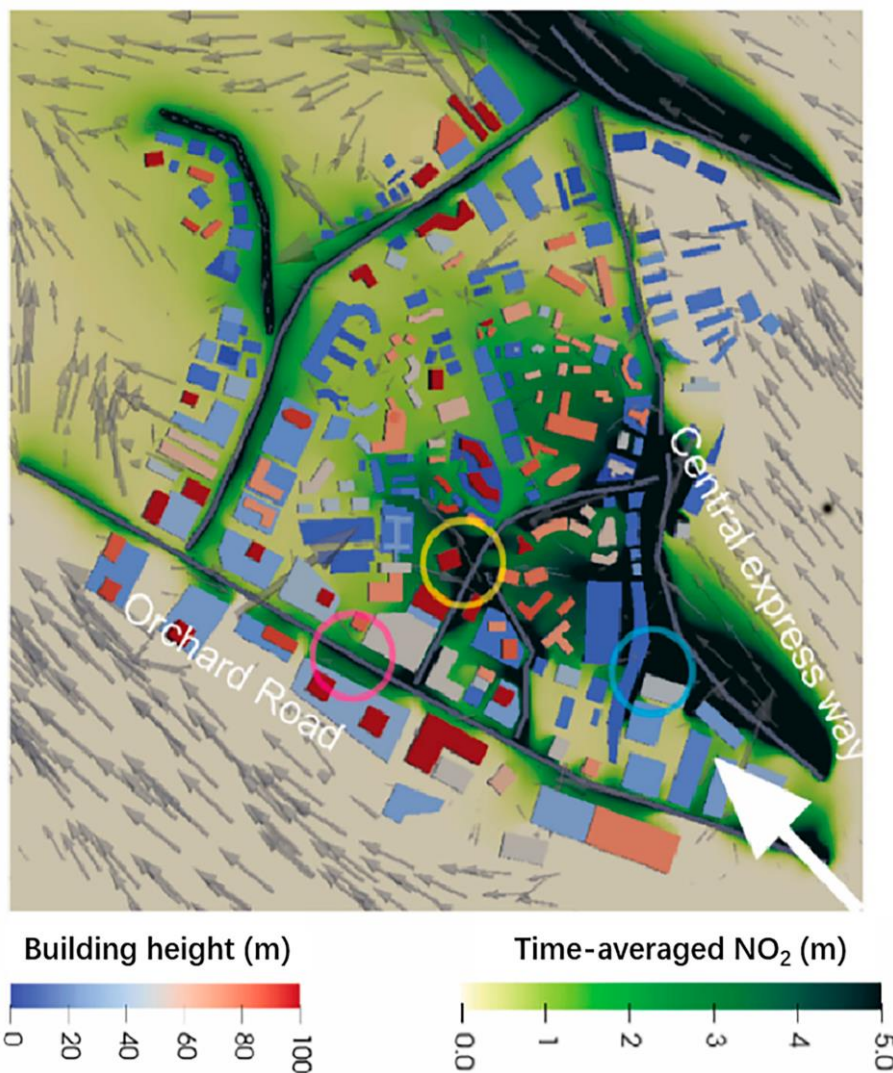


Figure 2: Simulated fields of NO₂ concentration and wind vectors at the pedestrian level

Previous CFD simulations often depended on limited field data or theoretical wind profiles, which could compromise their accuracy and representativeness. However, the integration of CFD models with larger-scale meteorological models has greatly enhanced the ability to provide realistic initial parameters for simulations. This integration allows for a more thorough understanding of the interactions between microscale and mesoscale phenomena.

International Journal of Innovative Research in Science, Engineering and Technology

(A High Impact Factor, Monthly, Peer Reviewed Journal) | Impact Factor: 7.089|

Website: www.ijirset.com

Vol. 6, Issue 8, August 2017

For example, researchers in cities such as Beijing, Hebei Province, and Shenyang have successfully integrated various scale models to simulate and analyze wind and turbulence fields. Tewari and colleagues demonstrated that combining the Weather Research and Forecasting Model (WRF) with CFD could accurately replicate variations in wind fields within the lower urban boundary layer. They also found that fine-tuning the urban canopy parameterization within the WRF model could further improve the performance of these coupled models.

These multi-scale simulations have revealed that higher wind speeds can enhance natural ventilation and improve the dispersion of air pollutants in densely built areas. Conversely, stable boundary layer conditions can lead to increased pollutant retention around individual buildings. Based on these findings, it has been recommended to widen streets and adjust the aspect ratio of street canyons to improve local ventilation and pollutant dispersion.

In scenarios involving the sudden release of hazardous gases, the coupled models have shown that there is a rapid and significant increase in concentration, leading to immediate and notable local variations due to microscale meteorological processes. These models are invaluable for providing a detailed understanding of flow fields and offer a cost-effective and secure method for risk assessment in urban environments.

VI. CONCLUSION

In conclusion, the advancement of Computational Fluid Dynamics (CFD) simulations has significantly enhanced our ability to understand and manage urban microscale meteorological processes. The integration of CFD with larger-scale meteorological models has provided a more accurate and comprehensive framework for analyzing the interactions between micro- and mesoscale phenomena. This combined approach has proven invaluable in elucidating the complex dynamics of urban airflow and pollutant dispersion, leading to improved strategies for enhancing air quality and urban planning.

The ability to simulate detailed wind and turbulence fields in diverse urban environments, as demonstrated in cities like Beijing, Hebei Province, and Shenyang, underscores the importance of incorporating both empirical data and theoretical models. These simulations have revealed critical insights into how various factors, such as building heights, street configurations, and wind speeds, influence local ventilation and pollutant dispersion. Recommendations based on these simulations, such as widening streets and adjusting street canyon geometries, provide practical solutions for mitigating air quality issues in urban areas.

The utility of coupled models in responding to emergency scenarios, such as the release of hazardous gases, highlights their role in risk assessment and management. By offering a detailed view of flow fields and pollutant behavior, these models enable timely and effective responses to potential hazards, ensuring better protection for urban populations.

The continuous refinement of CFD techniques and their integration with broader meteorological models will remain crucial for addressing the evolving challenges of urban air quality and environmental management. As cities continue to grow and face new environmental pressures, the ongoing development and application of these advanced simulation tools will be essential for creating healthier, more sustainable urban environments.

REFERENCES

1. Lee, B.X.; Kjaerulf, F.; Turner, S.; Cohen, L.; Donnelly, P.D.; Muggah, R.; Davis, R.; Realini, A.; Kieselbach, B.; MacGregor, L.S.; et al. Transforming our world: Implementing the 2030 agenda through sustainable development goal indicators. *J. Public Health Policy* 2016, 37, 13–31. [PubMed]
2. Arnfield, A.J. Two decades of urban climate research: A review of turbulence, exchanges of energy and water, and the urban heat island. *Int. J. Climatol. A J. R. Meteorol. Soc.* 2003, 23, 1–26.
3. Oke, R.T. Urban climate and global environmental change. In *Applied Climatology: Principles & Practices*; Thompson, R.D., Perry, A., Eds.; Routledge: New York, NY, USA, 1997; pp. 273–287.

International Journal of Innovative Research in Science, Engineering and Technology

(A High Impact Factor, Monthly, Peer Reviewed Journal) | Impact Factor: 7.089|

Website: www.ijirset.com

Vol. 6, Issue 8, August 2017

4. Stull, R.B. An Introduction to Boundary Layer Meteorology; Springer Science & Business Media: Berlin/Heidelberg, Germany, 1988.
5. Oke, T.R. Canyon geometry and the nocturnal urban heat island: Comparison of scale model and field observations. *J. Climatol.* 1981, 1, 237–254.
6. Asuvaran & S. Senthilkumar, "Low delay error correction codes to correct stuck-at defects and soft errors", 2014 International Conference on Advances in Engineering and Technology (ICAET), 02-03 May 2014. doi:10.1109/icaet.2014.7105257.
7. Baik, J.J.; Park, R.S.; Chun, H.Y.; Kim, J.J. A laboratory model of urban street-canyon flows. *J. Appl. Meteorol. Climatol.* 2000, 39, 1592–1600.
8. Kim, J.J.; Baik, J.J. Physical experiments to investigate the effects of street bottom heating and inflow turbulence on urban street-canyon flow. *Adv. Atmos. Sci.* 2005, 22, 230–237.
9. Yazid, A.W.M.; Sidik, N.A.C.; Salim, S.M.; Saqr, K.M. A review on the flow structure and pollutant dispersion in urban street canyons for urban planning strategies. *Simulation* 2014, 90, 892–916.
10. Molina-Aiz, F.D.; Fatnassi, H.; Boulard, T.; Roy, J.C.; Valera, D.L. Comparison of finite element and finite volume methods for simulation of natural ventilation in greenhouses. *Comput. Electron. Agric.* 2010, 72, 69–86.
11. Moin, P.; Mahesh, K. Direct numerical simulation: A tool in turbulence research. *Annu. Rev. Fluid Mech.* 1998, 30, 539–578.
12. Blocken, B. Computational Fluid Dynamics for urban physics: Importance, scales, possibilities, limitations and ten tips and tricks towards accurate and reliable simulations. *Build. Environ.* 2015, 91, 219–245.
13. Hussain, S.; Oosthuizen, P.H.; Kalendar, A. Evaluation of various turbulence models for the prediction of the airflow and temperature distributions in atria. *Energy Build.* 2012, 48, 18–28.
14. Blocken, B., Stathopoulos, T., & Pheasant, R. (2007). "CFD simulation of the pedestrian wind environment in the vicinity of buildings: A review." *Journal of Wind Engineering and Industrial Aerodynamics*, 95(9), 933-951. <https://doi.org/10.1016/j.jweia.2007.01.005>
15. Castro, I. P., & Robins, A. G. (2005). "On the influence of buildings on the flow around them." *Journal of Wind Engineering and Industrial Aerodynamics*, 93(7), 637-657. <https://doi.org/10.1016/j.jweia.2005.03.001>
16. Kukkonen, J., Karppinen, A., & Haapanen, N. (2007). "Urban air quality modelling: The case of Helsinki." *Atmospheric Environment*, 41(22), 4605-4617. <https://doi.org/10.1016/j.atmosenv.2007.01.026>
17. Sokhi, R. S., & Venkatram, A. (2006). "Evaluation of air quality models for urban and industrial areas." *Atmospheric Environment*, 40(35), 6836-6845. <https://doi.org/10.1016/j.atmosenv.2006.06.048>
18. Wu, J., & Liu, M. (2015). "Integration of traffic flow data into CFD models for air quality assessment." *Environmental Monitoring and Assessment*, 187(1), 4096. <https://doi.org/10.1007/s10661-014-4096-7>
19. Xie, H., & Zhang, Q. (2013). "CFD simulation of urban air quality: Coupling with real-time meteorological data." *Journal of Environmental Management*, 128, 110-122. <https://doi.org/10.1016/j.jenvman.2013.05.003>
20. Oke, T. R. (2006). "Initial Guidance to Obtain Representative Meteorological Observations at Urban Sites." World Meteorological Organization. WMO/TD-No. 1405.