

Arduino Based Automatic Engine Locking System for Drunken Drivers

N.Subhalakshmi¹, R.Aswathi², D.Gobigadharani³, S.Hemalatha⁴, F.Joezeet Flora⁵

Assistant Professor, Department of Electrical and Electronics Engineering, SKCET, Coimbatore, India¹

U.G. Student, Department of Electrical and Electronics Engineering, SKCET, Coimbatore, India²⁻⁵

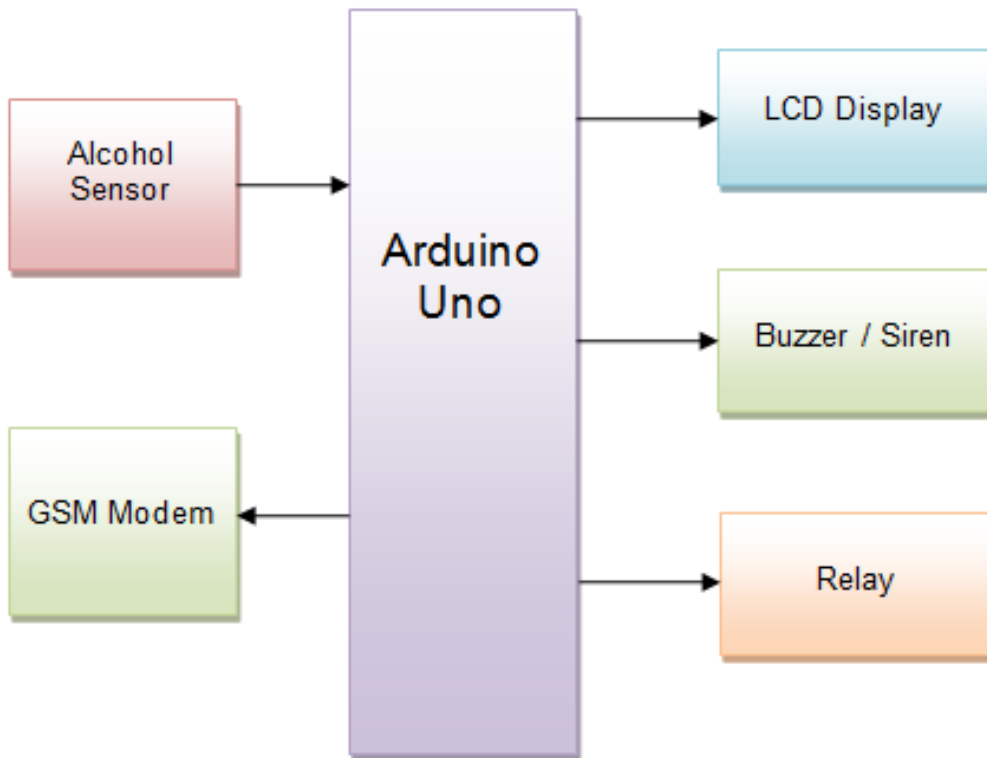
ABSTRACT:Most of these days, we hear lot of accidents due to drunken driving. Drunken drivers will not be in stable condition and so the rash driving is the inconvenience for other road users and also question of life and death for the drunken driver and for others. In this project, we are developing an Auto Lock System. The input for the system is from Detection Sensors either from Alcohol Breath or any other mechanism. The controller keeps looking for the output from these sensors. If there are any traces of Alcohol above the set limit, then the system will lock the Engine. As vehicle automobiles are beyond the scope of this project, we are simulating the process by activating the relay.

KEYWORDS:Non-volatile memory, drunken driving detection, arduino software, adafruit, motor shield circuit.

I. INTRODUCTION

Most of these days, we hear lot of accidents due to drunken driving. Drunken drivers will not be in stable condition and so the rash driving is the inconvenience for other road users and also question of life and death for the drunken driver and for others. The system uses a compact circuitry built around arduino software with a non-volatile memory capable of retaining the password data for over ten years. Programs are developed in embedded C. The main purpose behind this project is "Drunken driving detection". Now-a-days, many accidents are happening because of the alcohol consumption of the driver or the person who is driving the vehicle. Thus drunk driving is a major reason of accidents in almost all countries all over the world. Alcohol Detector in Car project is designed for the safety of the people seating inside the car. This project should be fitted / installed inside the vehicle. By implementing this design a safe car journey is possible and also drunken drivers can be controlled. Government must enforce laws to install such circuit in every car and must regulate all car companies to preinstall such mechanisms while manufacturing the car itself. If this is achieved the deaths due to drunken drivers can be brought to minimum level. In this type of system, future scope can be safely landing of car aside without disturbing other vehicles. India had earned the dubious distinction of having more number of fatalities due to road accidents in the world. Road safety is emerging as a major social concern around the world especially in India. Drinking and driving is already a serious public health problem, which is likely to emerge as one of the most significant problems in the near future. The system implemented by us aims at reducing the road accidents in the near future due to drunken driving. The system detects the presence of alcohol in the vehicle and immediately locks the engine of the vehicle. At the same time an SMS along with the location of the vehicle is sent to three pre-selected contacts. Hence the system reduces the quantum of road accidents and fatalities due to drunk driving in future. An effective solution is provided to develop the intelligent system for vehicles which will monitor various parameters of vehicle in-between constant time period and will send this data to the base unit as explained in this paper, by using hardware platform whose Core is Arduino, Alcohol sensor mq3, GSM module. The designed system would finish the function of communicating with the base station via GSM and control of various parameters. The whole Control system has the advantage of small volume and high reliability. Future scope of this system is to control the accidents and providing useful details about the accidental vehicle, thereby reducing the rate of accidents taking place due to drunken driving. This system brings innovation to the existing technology in the vehicles and also improves the safety features, hence proving to be an effective development in the automobile industry.

II.BLOCK DIAGRAM



III.BLOCK DIAGRAM DESCRIPTION

S.NO	COMPONENT NAME	DESCRIPTION
1	9V Battery	Rechargeable battery,storage battery,secondary cell or accumulator is a type of electrical battery which can be charged ,discharged into a load and recharged many times USES:Common example are lithium-helium battery.
2	Battery holder	A battery holder is one or more compartments or chambers for holding a battery.
3	Adafruit Motor shield (L293D)	Arduino is the great starting point for electronic and the motor shield can drive up to 4 DC Motors bi-directionally.They can drive forward and backward.The speed can be varied at 0.5% increments using high quality built in PWM.To connect motor simply solder two wires to the terminals and connect M1,M2,M3 and M4.#include<AFmotor .h> is the library used , create the object and motor 1 and 2 are used for high speed.
4	Arduino UNO	Arduino UNO R3 is a open source micro controller board based on the ATmega 328 chip.This board has 14 digital input/output pins,6

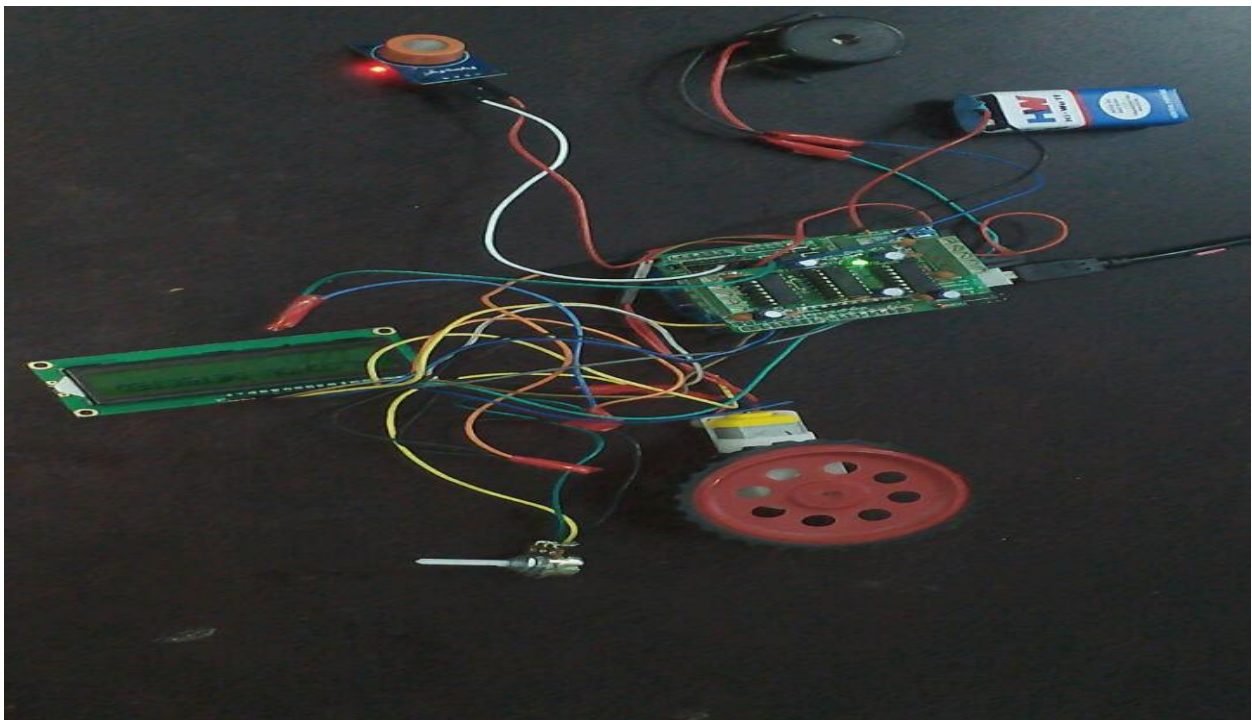
5	Buzzer	<p>analog input pins , Onboard 16 MHZ ceramic resonator , Port for USB connection , Onboard DC power jack , An ICSP header and a micro controller reset button.</p> <p>A Buzzer or beeper is an audio signaling device.It may be A mechanical,electromechanicalmagnetic,electromagnetic,electro – acoustic or piezoelectric audio signaling device.A piezoelectric buzzer can be driven by an oscillating electronic circuit or other audio signal source.A click,beep or ring can indicate that a button has been pressed.</p>
6	Jumper Wire	<p>A jumper wire is a conducting wire.It is used to transfer electrical signals between two points in a circuit.The wires can either be used to modify circuits or to diagnose problems within circuit.In electronics and particularly computing,a jumper is a short length of a conductor used to close , open or bypass part of an electronic circuit.They are typically used to setup or configure printed circuit boards ,such as the mother boards of a computers.</p>
7	DC Motor	<p>A motor is a electrical machine which converts electrical energy into mechanical energy.The principle of working of a DC motor is that “whenever a current carrying conductor is placed in a uniform magnetic field,it experiences a mechanical force “.The end of the wire winding are connected to a commutator.The commutator allows each coil to be energized in turn and connects the rotating coils with the external power supply through brushes.</p>
8	LCD(16*2)	<p>LCD (Liquid Crystal Display) screen is an electronic display module and find a wide rangeof applications.A 16x2 LCD display is very basic module and is very commonly used in various devices and circuits.A 16x2 LCD means it can display 16 characters per line and there are 2 such lines.</p>

IV.ARDUINO SOFTWARE CODE

```
#include <LiquidCrystal.h>
#include <AFMotor.h>
LiquidCrystal lcd(12, 11, 5, 4, 3, 2);
AF_DCMotor motor(1);
int val;
void setup() {
  Serial.begin(9600);
  Serial.println("Motor test!");
  pinMode(7,OUTPUT);
  // turn on motor
  motor.setSpeed(250);
  motor.run(RELEASE);
```

```
}  
void loop() {  
  uint8_t i;  
  val=analogRead(A5);  
  Serial.println(val);  
  motor.run(FORWARD);  
  for (i=0; i<255; i++) {  
    motor.setSpeed(i);  
    if(val>=100)  
    {  
      motor.run(RELEASE);  
      motor.setSpeed(0);  
      Serial.print("ALCOHOL DETECTED ");  
      lcd.print("ALCOHOL DETECTED");  
      lcd.print(" ");  
      digitalWrite(7,HIGH);  
      delay(2000);  
      digitalWrite(7,LOW);  
      delay(2000);  
      lcd.clear();  
    } } }  
}
```

V.SNAP SHOT OF HARDWARE



VI.CONCLUSION

In this project we have developed a real time model that can automatically lock the engine when a drunken driver tries to drive a car. By fitting this alcohol sensor into the car, we can save guard the life of the driver and also the remaining passengers. It is very simple application. The life time of the project is high. It has low or zero maintenance cost and of course low power consumption.

VII.ACKNOWLEDGEMENT

As we present our project on “ALCOHOL DETECTION AND VEHICLE CONTROLLING”, we take this opportunity to offer our sincere thanks to all those without whose guidance this project might have remained a dream for us. We express our deepest gratitude and thanks to Mrs.N.Subhalakshmi whose guidance and ideas channeled our conscientious endeavors towards the project. We have been fortunate enough that she gave us the freedom, support and whole hearted co-ordination for the completion of our project.

REFERENCES

- [1] National Highway Traffic Safety Administration Fatality Analysis Reporting System (FARS). 2009 [cited 2009 June]; Available from: <ftp://ftp.nhtsa.dot.gov/fars/>.
- [2] Cahalan, D., I. Cisin, and Crossley, American Drinking Practices: A National Study of Driving Behaviour and Attitudes. 1969, Rutgers University Press: New Brunswick, NJ.
- [3] Babor, AUDIT: The alcohol use disorders identification Test: Guidelines for use in primary health care. 1992, Geneva, Switzerland: World Health Organization.
- [4] Conley, Construct validity AUDIT with multiple offenders Drunk drivers. Journal of Substance Abuse Treatment, 2001.
- [5] Lim, T.S., W.Y. Loh, and Y.S. Shih, A comparison of Thirtythree old and new classification algorithms. Machine Learning, 2000
- [6] Lee, Assessing the Feasibility of Vehicle-Based Sensors To Detect Alcohol Impairment. 2010, National Highway Traffic Safety Administration: Washington, DC.