

International Journal of Innovative Research in Science, Engineering and Technology

(A High Impact Factor, Monthly, Peer Reviewed Journal)

Visit: www.ijirset.com

Vol. 8, Issue 3, March 2019

Advanced Framework for Large-Scale News Broadcasting for Social Media

Anusha Chitneni¹, Swathi P²

Lecturer, Computer science Engineering, Sreechaitanya degree college, Sathvahana University,
Telangana, India^{1&2}

ABSTRACT: This article proposes a framework dependent on a blend of different segments for equal displaying and gauging the cycles in networks with information digestion from the simple structure. This work's fundamental curiosity comprises the digestion of information for estimating the processes in social networks, which permits improving the nature of the estimate. The social network VK was considered a wellspring of data for deciding kinds of elements and the model's boundaries. The principle segment depends on a blend of inner sub-models for more practical multiplication of cycles on a miniature (for single data message) and meso (for the arrangement of statements) levels. Besides, the consequences of the conjecture must not lose their significance during the figurings. To get the aftereffect of the premise for networks with a vast number of hubs in a reasonable time, the cycle of recreation has been parallelized. The operating system's quality is also assessed by the number of clusters with acclimatized information to accomplish the necessary exactness and the proportion of count time in the anticipating period's casings.

KEYWORDS: Parallel simulation, Agent-based modeling, Forecasting model, Data-driven model, a model of information spread

I. INTRODUCTION

The reason for this exploration is to comprehend and foresee how information spreads in online social networks. It permits deciding ahead of time the dynamic and qualities of the cycles. Therefore, it is conceivable to identify deviations in conduct that can help recognize surprising or dubious exercises like little, critical, and unique substance, or network hacking. One of the approaches to accomplish that is to construct a computational model of how information measure spreads over a distinct topology for a particular arrangement of rules of connecting agents' conduct. Models portraying the cycles of information dispersal in social networks can be partitioned into illustrative and prescient ones[1]. A large portion of the models describes or gauge the elements of responses to a solitary online message. It has introduced various settings (for example, topical networks of Online Social Networks (OSN, a football fan system) and a different crowd. Subsequently, the model should be custom fitted to a given setting.

We distinguish between several levels of modeling and forecasting information measures in OSN (Fig. 1):

1. Micro-level: information message (IM)
2. Meso-level: community (sequence of information messages in one assembly)
3. Macro-level: information spread in the form of IM between a set of communities.

At the micro-level, the course on only post elements is usually considered. At the meso-level, one may investigate such things as the impact of distribution time on the effect of different messages and various crowd portions' inclinations. At the macro level, one may watch the trade of information between networks. In this examination, we introduce and assess an agent-based forecasting framework for information spreading on micro-and Meso levels in the considerable scope of OSN. This framework replicates the accumulated effect of information messages from the individual agent's activities[2]. To perform the starting ID of model boundaries, the review data from OSN has been gathered. The gatherings of agents and sorts of directives for the guaranteed network have been characterized.

We track the real status of information measures utilizing web crawlers and feed it into the supercomputer model to frequently tune the figure during the conjecture in the operational system.

International Journal of Innovative Research in Science, Engineering and Technology

(A High Impact Factor, Monthly, Peer Reviewed Journal)

Visit: www.ijirset.com

Vol. 8, Issue 3, March 2019

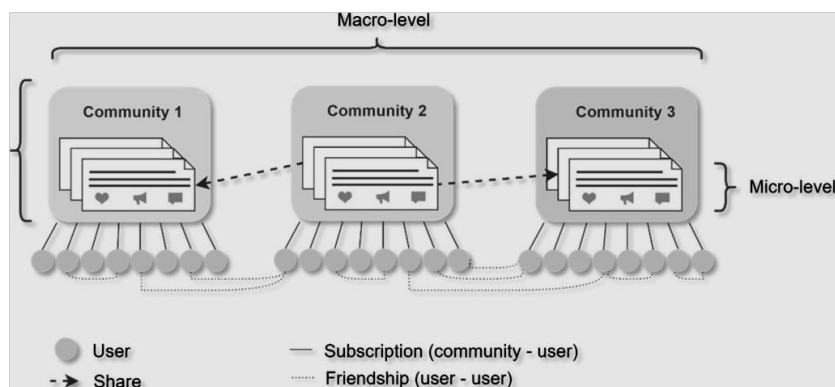


Fig 1: Online social networks-micro, meso, and macro levels

This study examines:

1. The chance of duplicating the watched elements from person responses.
2. The nature of conjectures regarding precision and earliness.
3. The effect of data osmosis on the nature of figures.
4. The adaptability and execution of the expectation framework.

II. DATASET DESCRIPTION

For this investigation, the data sets were gathered from the VKontakte social network utilizing the web crawler. The data incorporates the noble cause network and news network (there are two sorts of IMs in this network, standard and IMs with commercial) with IMs from April to May 2018 as recorded data and a while from August as ongoing data [3]. The central system has 295 k followers and 100 IMs, second network-1900k followers, and 1500 k IMS. Communities vary in both: the extent of various responses and the sources of reactions. For example, network noble cause community is recognized by a high piece of offers made by organizations (these offers are finished by chairmen of singular charges or little communities), just as an elevated piece of responses not from community endorsers. In contrast, in the news communities, there is a more significant movement of reporters.

III. THE PROPOSED METHOD

Description of main entities in a model

There are three principal substances of online social networks: communities, users, and IM. The system of elements on the Internet is a coordinated chart, where the vertices of the diagram are a lot of organizations and set of users, and edges are subscriptions or friendship joins. The unit of information is IM; it can be moved between vertices[4]. The fundamental qualities of elements are introduced in Fig.2.

International Journal of Innovative Research in Science, Engineering and Technology

(A High Impact Factor, Monthly, Peer Reviewed Journal)

Visit: www.ijirset.com

Vol. 8, Issue 3, March 2019

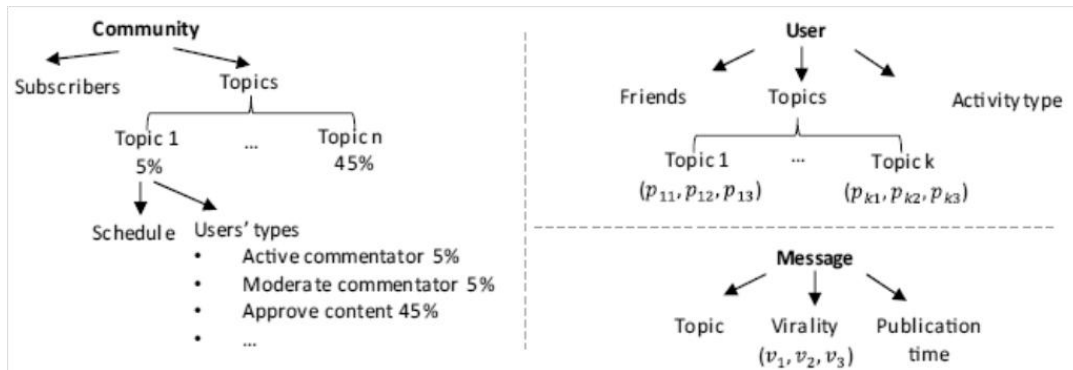


Fig 2:Kinds of entities in the model and the attributes of entities

Each IM has a wellspring of information and an identifier, time of distribution, point, and estimations of virality coefficient, which contrasts for potential kinds of response on messages, for a model, the virality of sharing. We characterize virality as an expected impact of the message, which implies the likelihood of response (as a simple for virality in plague spreading). A client is a vertex (recipient of information), which can react to the gotten IM. For online social networks, three essential kinds of responses are accessible: (endorsement of substance), remark (the conversation of information), share (circulation of IM). Also, every client is depicted by sorts of the day by day/week by week movement and many responses to a lot of IMs[5]. A community is a network' vertex that communicates an IM to numerous users (community endorsers). It is depicted by a lot of endorsers and a lot of potential subjects for IM. Every theme has the likelihood of conveyance of distribution by the community depending on the time of day and day of the week. The model's information parameters are the network of subscriptions and friendships just as parameters of inner models of community system can be users' internal models leadingly or separated from a genuine social network[6]. For the subsequent case, we utilized the web crawler and gathered information about users' communities and companions' endorsers. Three inner models speak to various drivers of the information cycle and characterize the conduct of entities: a model of IM's age, a model of movement, and a Model of response.

Description of the general scheme

The architecture of the implemented framework for operational forecasting of information measures on the Internet is introduced in Fig. 3. The web crawler permits proficiently gather data from different sources on the Internet, including the most significant Russian online social network VKontakte. Contingent upon the picked situation, the crawler permits you to get two kinds of data: accurate data for past time stretches and ongoing data. Data gathered by the crawler are introduced in JSON design with different parameters. Notwithstanding, further use of data in the model requires extra preparation of the got documents[7]. Recorded data are needed to alter the information parameters of the model. Data are put away as isolated assortments in MongoDB. The data acquired in this manner can be handled and introduced as information parameters for the model: network topology, communities' and users' parameters. Parallel calculations permit you to complete the process of modeling for massive scope networks inside a reasonable time[8]. We can gauge sensible methods before it gets obsolete and that we have enough time to respond if this architecture is utilized for the choice emotionally supportive network. The model was implemented on a C++ language with an MPI standard for message passing[9].

International Journal of Innovative Research in Science, Engineering and Technology

(A High Impact Factor, Monthly, Peer Reviewed Journal)

Visit: www.ijirset.com

Vol. 8, Issue 3, March 2019

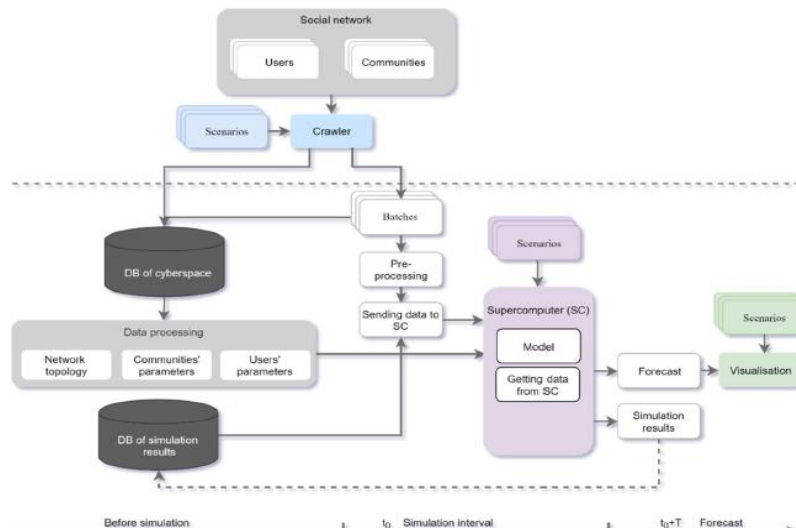


Fig 3:General architecture of the arrangement of operational forecasting of information measures in the cyberspace

The model utilizes the example of parallel correspondence Master/Slave. Ace hubs are dependable for keeping measurements and IMs' age[10]. Slave hubs are liable for facilitating a subnetwork, what's more, increasing IMs through it.Real-time data are added to the model as successive bunches that are handled furthermore, spared to a particular organizer [11]. The clump is a JSON record with the network data: each column or IM has the number of responses of various sorts. What's more, it can incorporate documents of users who responded to the information.

IV. SCALABILITY AND PERFORMANCE ANALYSIS

Figure 4 shows the aftereffects of the proficiency for the parallel implementation. The primary experiment inspects prescient modeling's versatility in a similar model on the supercomputer Lomonosov[12]. In this experiment, the size of one community's network is set to 5–15 M. Furthermore, the quantity of IM is 5 or 10.

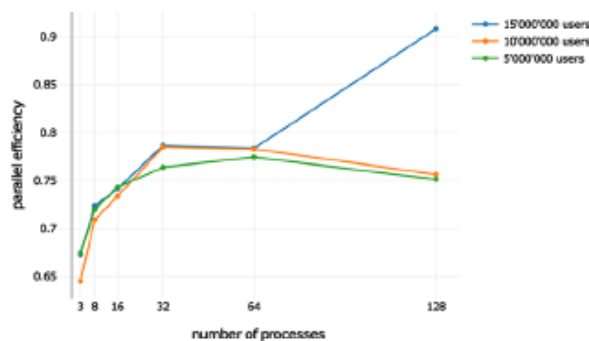


Fig 4:Adaptability results on Lomonosov supercomputer

In the data assimilation mode, 1 IM is added to every one of 22 assimilation clusters, and the quantity of cycles changes from 1 to 128.illustrates the parallel proficiency acquired in this experiment. For community sizes of 5 or 10 M hubs,

International Journal of Innovative Research in Science, Engineering and Technology

(A High Impact Factor, Monthly, Peer Reviewed Journal)

Visit: www.ijirset.com

Vol. 8, Issue 3, March 2019

similar proficiency changes from 0.64 to 0.78, topping at 32 cycles and diminishing to 0.75 for 128 cycles[13]. For the chart with 15 M vertices, the parallel effectiveness develops as far as possible up to 128 processes.

V. CONCLUSION

The predictive capacities of the created innovation were surveyed by the nature of estimates utilizing the developed technique for two diverse topical datasets (a noble cause, news) and two unique sizes of the Internet: micro-scale and mesoscale. Experiments were led in modes with and without data assimilation. The middle mistake for various client responses arrives at values under 10% in 1.5–3 h after the message age. The determined and observational dispersions of the number of the reaction to information messages (IM) in one setting are unclear by the Kolmogorov–Smirnov standard for all experiments. The framework's online monitoring method permits estimating real-world dispersions a portion of the model parameters (for example, IM virality, IM age time, and so forth.). These conveyances, calculated for explicit settings (like foundation or news), permit anticipating the information stream ahead of time and unwavering high quality. Thus it gets conceivable to distinguish surprising or dubious exercises like the recognizable proof of fake plans based on the early identification of changes in crowd commitment levels or action designs; ID of criminal networks based on the portion of "dubious" information sources in every one of information sources; ID of dubious partner conduct based on the programmed estimation of expected virality and sort of IMs.

REFERENCES

- [1] K. He, X. Zhang, S. Ren, and J. Sun, "Deep Residual Learning for Image Recognition," in IEEE Conf. Comput. Vis. Pattern Recognit. IEEE, 2016, pp. 770–778. [Online]. Available: <https://doi.org/10.1109/CVPR.2016.90>
- [2] Ankit Narendrakumar Soni (2018). Image Segmentation Using Simultaneous Localization and Mapping Algorithm. International Journal of Scientific Research and Engineering Development, 1(2), 279-282.
- [3] Vishal Dineshkumar Soni. (2018). ROLE OF AI IN INDUSTRY IN EMERGENCY SERVICES. International Engineering Journal For Research & Development, 3(2), 6. <https://doi.org/10.17605/OSF.IO/C67BM>
- [4] Ketulkumar Govindbhai Chaudhari. (2018). Analysis on Transport Layer Protocols and Its Developments. International Journal of Innovative Research in Computer and Communication Engineering, 6(9), 7707-7712. DOI: 10.15680/IJIRCE.2018.0609046.
- [5] Ankit Narendrakumar Soni (2018). Data Center Monitoring using an Improved Faster Regional Convolutional Neural Network. International Journal of Advanced Research in Electrical, Electronics and Instrumentation Engineering, 7(4), 1849-1853. doi:10.15662/IJAREEIE.2018.0704058.
- [6] Karunakar Pothuganti, Aredo Haile, Swathi Pothuganti,(2016)" A Comparative Study of Real Time Operating Systems for Embedded Systems" International Journal of Innovative Research in Computer and Communication Engineering, Vol. 4, Issue 6, June 2016.
- [7] Ketulkumar Govindbhai Chaudhari. (2018). Comparitive Analysis of CNN Models To Diagnose Breast Cancer. International Journal of Innovative Research in Science, Engineering and Technology, 7(10), 8180-8187. DOI:10.15680/IJIRSET.2018.0710074.
- [8] Vishal Dineshkumar Soni (2018). Prediction of Stock Market Values using Artificial Intelligence. International Journal of Advanced Research in Electrical Electronics and Instrumentation Engineering, 7(4), 1844-1848. doi:10.15662/IJAREEIE.2018.0704057.
- [9] Ankit Narendrakumar Soni (2018). Application and Analysis of Transfer Learning-Survey. International Journal of Scientific Research and Engineering Development, 1(2), 272-278.
- [10] Vishal Dineshkumar Soni .(2018). Internet of Things based Energy Efficient Home Automation System. International Journal of Innovative Research in Science Engineering and Technology, 7(3), 2924-2929. doi:10.15680/IJIRSET.2018.0703148.
- [11] Ketulkumar Govindbhai Chaudhari. (2018). E-voting System using Proof of Voting (PoV) Consensus Algorithm using Block Chain Technology. International Journal of Advanced Research in Electrical, Electronics and Instrumentation Engineering, 7(11), 4051-4055. DOI:10.15662/IJAREEIE.2018.0711019