

International Journal of Innovative Research in Science, Engineering and Technology

(A High Impact Factor, Monthly, Peer Reviewed Journal)

Visit: www.ijirset.com

Vol. 8, Issue 5, May 2019

Overview on Applications of Artificial Intelligence (AI) in Optical Networks

Ketulkumar Govindbhai Chaudhari,

Department of Information Technology, University of The Potomac, USA

ABSTRACT: Artificial intelligence (AI) is a broad logical control that empowers PC frameworks to take care of issues by copying complex organic cycles, such as learning, thinking, and self-amendment. This paper presents a far-reaching survey of the use of AI procedures for improving the execution of optical correspondence frameworks and networks. The utilization of AI-based procedures is first concentrated in quite a while identified with the optical transmission, going from the portrayal and activity of organization segments to execution checking, moderation of nonlinearities, and nature of transmission assessment. At that point, applications identified with optical organization control and the executives are likewise assessed, including subjects like optical organization arranging and activity in both transport and access networks. Finally, the paper also presents a synopsis of changes and difficulties in optical systems administration where AI is relied upon to assume an essential function soon.

KEYWORDS: Artificial intelligence, Machine learning, Optical communications, Optical networks

I. INTRODUCTION

Artificial intelligence (AI) elements and frameworks can perform activities closely resembling learning and choice-making by mimicking natural cycles, with uncommon emphasis on human psychological cycles. Human-made intelligence applications, for example, individual virtual partners, savvy vehicles, buy forecast, discourse acknowledgment, or smart home gadgets, are practically pervasive. What is more, comparative AI-based procedures are now changing our day by day lives in manners that improve human efficiency, security, or wellbeing, influencing even how we engage or impart. Generally, AI does not convey self-governing frameworks, yet preferably includes information and thinking to existing applications, information bases, and situations, to make them more amicable, more astute, and more touchy to changes in their conditions. Every little achievement in AI research empowers us to grow our aptitudes to explain new classes and sizes of issues, consequently driving examination and development in pretty much every logical discipline. As a model, the improvement of the exhibition of media transmission networks by the utilization of AI-based procedures has become a zone under broad examination over the previous decades, influencing regions of transmission, exchanging, and network the board. Optical correspondence networks and frameworks have not remained on the sidelines, yet have begun to receive this control towards AI-based optical systems administration, from photonic gadgets to control and the board. The point of this paper is to survey a portion of the right now considered ways to deal with increment the presentation of optical networks by the utilization of AI instruments, giving a review of the momentum research inside this zone, just as a review of chances and difficulties emerging in this unique situation.

II. AN OVERVIEW OF AI AND RELATED TECHNIQUES

AI centers around the investigation of insightful or sound operators, i.e., elements which see and act in a domain to accomplish their objectives or augment a presentation boundary. Besides, they can additionally improve their exhibition through learning [1]. In this part, we quickly experience a portion of the subfields of AI that have been effectively utilized in optical systems administration, expressing the inspiration for their presentation, and giving a few

International Journal of Innovative Research in Science, Engineering and Technology

(A High Impact Factor, Monthly, Peer Reviewed Journal)

Visit: www.ijirset.com

Vol. 8, Issue 5, May 2019

instances of their use in the optical systems administration writing. Fig. 1 shows a graph with AI subfields and procedures, and groups the references inspected in this study inside those classifications.

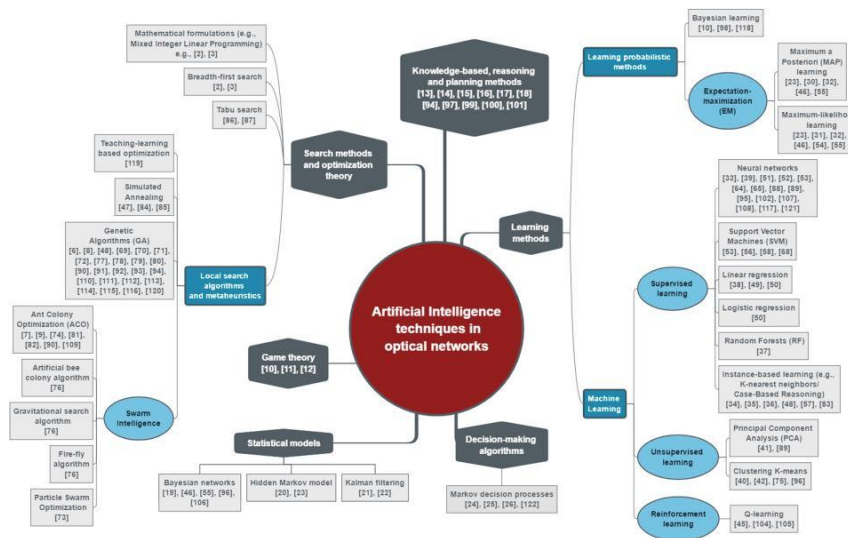


Fig 1: AI subfields and techniques applied to optical networks.

The least complicated kind of systems administration situation we can consider is deterministic, recognizable, static, and known. For these situations, search calculations and streamlining hypothesis are vital components of the AI territory [1]. They have been broadly utilized in optical network plan and control for quite a while along these lines. Models incorporate broadness first-scan calculations for steering, and straight and mixed-integer straight programming definitions for network arranging[2]. Be that as it may, when a portion of the conditions recently referenced are loose, or when the organization size disallows the utilization of the previous strategies, those techniques have been supplemented or supplanted by nearby inquiry calculations, and metaheuristics like reenacted toughening, hereditary calculations, swarm advancement, and educating learning-based advancement[3]. For example, optical organization arranging[4]and light path foundation have profited by those strategies. A step forward towards making specialists more keen stops by joining knowledge, thinking, and arranging. For this situation, innovative operators keep a knowledge base (KB) where essential knowledge about nature and the effect of their activities is put away. That KB is utilized by the operators when formulating strategies on the most effective method to prevail on dynamic and can be refreshed to adjust to evolving conditions. Along this line, all-encompassing structures, as psychological optical networks, which see, act, learn, adjust, and advance their presentation, have been proposed by various scientists[4]. Three significant subjects regarding consolidating intelligence to optical frameworks or networks are how to deal with uncertainty, how to tackle dynamic, and how to learn. Indeed, there are non-deterministic occasions in an optical organization, and the absence of robust data about the earth is not an uncommon issue. In this way, smart operators must have the option to work under uncertainty vigorously [4]. The laws of likelihood and, specifically, Bayesian networks are valuable apparatuses to manufacture those powerful models. A second key component is the utilization of dynamic calculations. The hidden guideline for these calculations is the amplification of the standard utility. A utility capacity is characterized to appoint a solitary number to communicate the attractive quality of a state, and an operator settles on choices to augment such a capacity. Sound systems administration conditions, be that as it may, must arrangement with uncertainty, and the utility of a specialist, as a rule, rely upon an arrangement of choices instead of on a solitary

International Journal of Innovative Research in Science, Engineering and Technology

(A High Impact Factor, Monthly, Peer Reviewed Journal)

Visit: www.ijirset.com

Vol. 8, Issue 5, May 2019

separated one. Dynamic in optical organization specialists can like this be demonstrated as successive choice issues in uncertain conditions.

III. APPLICATIONS OF AI IN OPTICAL TRANSMISSION

We depict AI methods utilization in optical networks' physical layer, i.e., in optical transmission-related issues. AI procedures can improve organization gadgets' setup and operation, optical execution checking, adjustment design acknowledgment, fiber nonlinearities moderation, and quality of transmission (QoT) estimation.

Operation of erbium-doped fiber amplifiers (EDFAs)

EDFAs are another optical organization part on which AI procedures have been broadly applied. EDFAs are critical components of optical vehicle networks, fit for broadening the range of the sent optical sign by performing intensification of WDM directs in the optical domain. Machine learning procedures offer proficient answers for a broad scope of provokes characteristic to the operation of EDFAs inside optical fiber transmission. Characterize a relapse issue with managed machine learning (utilizing a spiral premise work) to factually model the channel reliance of intensity trips in multi-length EDFA networks, learning from recorded information[5]. It gives the framework precise suggestions on channel include/drop systems to limit the force difference among channels. With the appearance of flex-matrix networks, in which dynamic defragmentation is often applied to re-optimize range task to dynamic associations to improve the unearthly proficiency, the past examination is reached out to adapt to the force outing issue is progressively changing ghostly arrangements. An edge relapse model is utilized to decide the size of a given sub-channel effect. A calculated relapse is applied to determine whether the commitment will bring about an expansion or then again decline in the disparity among post-EDFA powers.

Quality of transmission (QoT) estimation

Optical Association (or lightpath) QoT estimation before the organization is especially crucial in impairment-mindful optical organization plans and operations. A QoT assessor apparatus, the Q-Tool, registers the related Q-variables of a set of lightpaths, given reference geography, by consolidating systematic models and mathematical strategies. These assessments are generally exact. However, the real high registering chance to play out the counts makes this instrument unrealistic when time constraints are significant. A few methodologies propose psychological strategies to fathom this disadvantage. For instance, present a QoT assessor competent of misusing past understanding and accordingly, furnish with quick and right choices on whether a lightpath satisfies QoT necessities or not. It depends on case-based thinking (CBR), an artificial intelligence system that offers answers for new issues by recovering the most comparative cases looked in the past, whether by reusing them or after adjusting them. Cases are recovered from a knowledge base (KB), which can be static [6] or upgraded with learning and overlooking methods [6]. Depending on an upgraded KB, CBR results show an extraordinary pace of significant order of lightpaths into high/low QoT classes, more significant, up to four significant degrees quicker than the Q-Tool referenced previously. Another proposition for QoT estimation is applying a machine learning-based classifier, explicitly arbitrary timberland, to foresee the likelihood that the BER of an up-and-comer lightpath will not surpass a given limit[6]. At long last, present the idea of "living organization," an optical organization that tracks its way level presentation, which exploits BER data checking and of a learning cycle (in light of direct relapse) in request to assess the BER of each new assistance demand.

Operation of erbium-doped fiber amplifiers (EDFAs)

EDFAs are another optical organization segment on which AI methods have been widely applied. EDFAs are critical components of optical vehicle networks, equipped for expanding the scope of the communicated optical sign by performing enhancement of WDM diverts in the optical domain. Machine learning methods offer productive answers for a broad scope of provokes inborn to the operation of EDFAs inside optical fiber transmission. Characterize a relapse issue with regulated machine learning (utilizing an outspread premise work) to factually model the channel reliance of intensity journeys in multi-range EDFA networks, learning from chronicled information[7]. It gives the framework detailed proposals on channel include/drop methodologies to limit the force uniqueness among channels.

International Journal of Innovative Research in Science, Engineering and Technology

(A High Impact Factor, Monthly, Peer Reviewed Journal)

Visit: www.ijirset.com

Vol. 8, Issue 5, May 2019

With the appearance of flex-lattice networks, in which dynamic defragmentation is often applied to re-optimize range task to dynamic associations to improve the phantom productivity, the past investigation is reached out to adapt to the force outing issue is powerfully changing otherworldly designs. An edge relapse model is utilized to decide the extent of a given sub-channel effect. A calculated relapse is applied to determine whether the commitment will increase an expansion or, again, the decline in error among post-EDFA powers.

New Opportunities And Challenges For The Use Of AI In Optical Networks

In this part, we depict various new chances and difficulties that we imagine in the region of optical frameworks and systems administration. We imagine progressively testing AI utilization functions in the physical layer, where it will keep being a helpful device not just in the structure of developing optical transmission innovations but also in helping expanding security by methods for assault or interruption identification restriction. We also portray the proper function of AI in the organization's automation, board operations, and developing ideal organizing models.

Optical Transmission Systems, and Attack and Intrusion Detection

Many control choices in an organization are made dependent on precise estimation or estimation of physical parameters. We expect AI will keep playing a significant function in supporting rising transmission innovations like space-division multiplexing, multimode/multicore fibers, and progressed adjustment arrangements and a group of stars forming. We additionally anticipate further advances in the utilization of AI strategies for QoT estimation and execution checking. In any case, a critical zone firmly identified with observing where we see a noteworthy open door for AI strategies, yet have not, however, rose (supposedly) in the optical field, is that of assault and interruption identification. Expanding Internet multiplication has driven organizations and other organizations to offer virtual assistance over the Internet framework [8]. Subsequently, these substances need to fight with higher danger and potential expenses related to information breaks, which is presently assessed to be as high as \$3.6 million by and large. The optical organization layer is additionally helpless to assaults by malevolent substances, which can be extensively named disturbance and listening in assaults. Interruption assaults endeavor to misuse optical transmission's physical attributes to debase the operation of existing administrations and square approaching administration demands while listening in assaults, are focused on gaining unapproved admittance to the information sent over the optical network[9].

Automating network management operations

In the territory of optical organization operation, heterogeneous (multi-technology, multi-merchant) network gadgets make operation, organization, and maintenance of optical networks, a perplexing and testing measure. This is because of how organization state data, e.g., geography, clog, failure disclosure, and so forth. Gathered from various gadgets have extraordinary and restricted state data, representing a significant challenge in information assortment, handling, and dynamic. Accordingly, measure automation has been recognized as a critical empowering agent for driving down operational expenses and to help move human intelligence away from redundant errands. AI-based methods are a key empowering influence for the robotizing network of the executive's operations[9]. Psychological optical networks were proposed with that aim[9]; however, many open issues remain. The essential pre-imperative for mechanizing network operations is to gather and examine telemetry data from the organization proficiently. SDN and related principles have presented streaming telemetry, which can productively gather data from the organization right to the organization edge. The size of data gathered in an enormous telco presents a test for preparing and distinguishing inconsistencies, for example, organization mic setups, alert relationship, failure confinement, and expectation. AI-based procedures can be productively used to focus on these issues at scale, particularly when joined with Big Data structures like the Apache Hadoop or Spark biological systems. Another critical empowering influence for mechanizing network executives includes utilizing decisive purposes, which give clients a language structure to portray their necessities to organize coordination stages [10].

Applications in on-chip networks

Finally, another promising field of utilization as we would like to think is that of on-chip networks. Today, influential tech organizations like Google, Microsoft, Intel, and so forth are pushing chip assembling to empower AI processing on

International Journal of Innovative Research in Science, Engineering and Technology

(A High Impact Factor, Monthly, Peer Reviewed Journal)

Visit: www.ijirset.com

Vol. 8, Issue 5, May 2019

a solitary chip. On-chip networks give correspondence substrates for the continually expanding number of centers on a solitary chip[11]. By and large, on-chip networks are intended to empower productive figuring in less time while expending less force. Even though it is early days in chip assembling to bring AI-empowered on-chip networks into the market, as of late, Google has concocted its own AI chip, known as Tensor Processing Unit (TPU), which permits Tensor Flow (a profound neural organization software) to run. Intel also reported a test chip called "Loihi," which is planned dependent on neuromorphic innovation that employs neurons rather than rationale entryways[12]. AI calculations are known for time and calculation intricacy, requiring different focal and graphical preparing units[13]. Along these lines, AI-empowered optical organization on-chip (ONGC) is an option compared to the electronic NOC, reducing power utilization and calculation time.

IV. CONCLUSION

This paper has given an exhaustive overview of the current research inside Artificial Intelligence (AI) methods in optical networks, just as a review of chances and difficulties emerging in this context. We have tended to the appropriateness of AI methods when managing the portrayal and operation of transmitters, EDFAs, and beneficiaries, just as for execution checking, relief of nonlinearities, and for QoT estimation, which is mostly applicable in impairment-mindful optical organization operation. Much of the time, AI procedures have demonstrated to be more effective than old-style draws near, which are usually restricted by the intricacy, absence of versatility, or potential adaptability of the deterministic or, then again, semi-diagnostic models on which they depend. AI strategies give comparative preferences in issues identified with the control and plan of optical networks. The exhaustive survey of the best in class in this issue has remembered various applications for the accompanying fields: optical organization arranging, association foundation. By and large, AI procedures' capacity to discover ideal or close ideal arrangements in exceptionally complex situations (i.e., issues with high dimensionality, taken care of with enormous measures of information) without the need to create thorough investigative or semi-expository models makes them fundamental to address the difficulty presented by the expanded unpredictability and dynamism of current optical correspondence networks, which need to face, among different impairments, the physical impediments forced by the commotion and nonlinear contortions.

REFERENCES

- [1] F. Morales, M. Ruiz, L. Gifre, L. M. Contreras, V. Lopez, L. Velasco, Virtual network topology adaptability based on data analytics for traffic prediction, *Journal of Optical Communications and Networking* 9 (1) (2017) A35–A45.
- [2] M. de Paula Marques, F. R. Durand, T. Abro, WDM/OCDM energy-efficient networks based on heuristic ant colony optimization, *IEEE Systems Journal* 10 (4) (2016) 1482–1493.
- [3] Vishal Dineshkumar Soni, "ROLE OF ARTIFICIAL INTELLIGENCE IN COMBATING CYBER THREATS IN BANKING", *IEJRD - International Multidisciplinary Journal*, vol. 4, no. 1, p. 7, Jan. 2019.
- [4] F. R. Durand, T. Abro, Energy-efficient power allocation for WDM/OCDM networks with particle swarm optimization, *IEEE/OSA Journal of Optical Communications and Networking* 5 (5) (2013) 512–523.
- [5] Vishal Dineshkumar Soni 2018. "Artificial Cognition for Human-robot Interaction". *International Journal on Integrated Education*. 1,1 (Dec. 2018), 49-53. DOI:<https://doi.org/10.31149/ijie.v1i1.482>.
- [6] R. Montero, F. Agraz, A. Pagès, J. Perelló, S. Spadaro, Dynamic topology discovery in SDN-enabled transparent optical networks 2017 International Conference on Optical Network Design and Modeling (ONDM), 2017, pp. 1–6.
- [7] Ankit Narendrakumar Soni 2018. Data Center Monitoring using an Improved Faster Regional Convolutional Neural Network. *International Journal of Advanced Research in Electrical, Electronics and Instrumentation Engineering*, Vol. 7, Issue 4, April 2018.
- [8] N. Skorin-Karpov, M. Furdek, S. Zsigmond, L. Wosinska, Physical-layer security in evolving optical networks, *IEEE Communications Magazine* 54 (8) (2016) 110–117.
- [9] Vishal Dineshkumar Soni 2018. Prediction of Stock Market Values using Artificial Intelligence, *International Journal of Advanced Research in Electrical, Electronics and Instrumentation Engineering*, Vol. 7, Issue 4, April 2018.



ISSN(Online): 2319-8753
ISSN (Print): 2347-6710

International Journal of Innovative Research in Science, Engineering and Technology

(A High Impact Factor, Monthly, Peer Reviewed Journal)

Visit: www.ijirset.com

Vol. 8, Issue 5, May 2019

- [10] Karunakar pothuganti (2013) 'An Efficient Architecture for Lifting Based 3D-Discrete Wavelet Transform' International Journal of Engineering Research & Technology (IJERT), Vol. 2 Issue 12, December – 2013 ISSN: 2278-018
- [11] Ankit Narendrakumar Soni 2019. Text Classification Feature extraction using SVM. International Journal of Innovative Research in Computer and Communication Engineering, Vol. 7, Issue 7, July 2019. DOI: 10.15680/IJIRCCE.2019.
- [12] W. Xia, Y. Wen, C. H. Foh, D. Niyato, H. Xie, A survey on software-defined networking, IEEE Communications Surveys Tutorials 17 (1) (2015) 27–51.
- [13] Ankit Narendrakumar Soni 2018. Feature Extraction Methods for Time Series Functions using Machine Learning. International Journal of Innovative Research in Science, Engineering and Technology, Vol. 7, Issue 8, August 2018. DOI:10.15680/IJIRSET.2018.0708062