

# International Journal of Innovative Research in Science, Engineering and Technology

(A High Impact Factor, Monthly, Peer Reviewed Journal) | Impact Factor: 7.249 |

Website: [www.ijirset.com](http://www.ijirset.com)

Vol. 8, Issue 11, November 2019

## The Intersection of Computer Vision and AI Data Engineering: Challenges and Innovations

Abhishek Vajpayee

Illumina Inc., USA

**ABSTRACT:** The Age of artificial intelligence (AI) has witnessed the intersection of computer vision and AI data engineering, revolutionising industries from healthcare to automotive to entertainment. Whereas artificial intelligence data engineering provides AI models with the infrastructure and techniques to help process, store and manage large amounts of data, specific verticals such as computer vision allow robots to see and leverage the visual world. While this poses significant challenges in terms of the volume of data it generates, requirements for model training, and deployment, the interplay between these domains has resulted in wonderful inventions. This paper explores the combination of computer vision and artificial intelligence data engineering, discusses current challenges, solutions and new developments in the two fields. Based on recent advancements & real-world use cases in the industry, the analysis discusses the progress of the aforementioned domains towards shaping the next-gen AI systems. The work also describes a case study in applicability of computer vision and AI data engineering applied on classification and recognition of medical images.

**KEYWORDS:** Computer Vision, Data Engineering, Artificial Intelligence, Deep Learning, CNN,

### I. INTRODUCTION

Computer vision is the discipline of instructing computers to identify and comprehend visual information. Computer vision is a branch of artificial intelligence that use machine learning techniques to allow computers and other technologies to perceive, understand, and interpret the visual world. It utilises visual data, like digital images, videos, or other inputs, and using machine learning algorithms to identify patterns and derive conclusions [1].

The environment is replete with visually similar objects that we see everyday. Although they exhibit a similar aesthetic and ambiance, subtle differences distinguish them. The fundamental concept of computer vision is that computers need to see and comprehend visual information similarly to humans [2]. This entails the ability to distinguish between various images and classify them based on their form, colour, and other characteristics. The objective is to provide computers with the capacity to comprehend the digital world akin to the complexities of the human visual system [3].

The objective of computer vision, a subset of artificial intelligence, is to enable computers to perceive visual information akin to human beings. Computer vision, defined as the capacity of computers to comprehend and deduce intricate information from digital photographs and videos, is essential for the advancement of resilient AI systems. The technical accuracy of computer vision systems has significantly improved due to deep learning, particularly via convolutional neural networks (CNNs) [4].

The quantity and quality of the data used to train these models are the main factors influencing their performance. The advancement of AI data engineering tools is essential for the management and preparation of the substantial volumes of visual data required for training [5].

The role of pictures in human perception is significant. Machines, unlike humans, can scan an image, convert it to a digital representation, and then analyse it to extract data. Filters are an essential component of contemporary image and video editing software, as well as several social networking applications. Recent applications include pattern recognition, medicinal purposes, machine vision, remote sensing, and video processing. Defect identification, face

# International Journal of Innovative Research in Science, Engineering and Technology

(A High Impact Factor, Monthly, Peer Reviewed Journal) | Impact Factor: 7.249 |

Website: [www.ijirset.com](http://www.ijirset.com)

Vol. 8, Issue 11, November 2019

recognition, object identification, image classification, object tracking, motion analysis, cell classification, and several more practical uses of computer vision[6].

Pattern Recognition is an area of computer vision that focusses on object recognition using picture modification to get high-quality images and their analysis. The image obtained from the sensors is used to inform a choice. The objective of the method is to develop a machine with visual capabilities. To get important information from photos, a technique referred to as "image processing" is used. Image processing is crucial in several fields, including autonomous visual control systems, biomedical imaging, intelligent transportation, remote sensing, moving object tracking, defence surveillance, and remote sensing. Imperfect imaging processes result in digital photos being affected by noise during both capture and transmission stages. Typically, sound effects on pictures include replacing some original pixels with new ones. The initial pixel's value is modified by the values of the new pixels, either raised or lowered.

Imaging sensors and the digitisation of sensor signals both include digital image processing. The sensor, maybe a colour or monochrome television camera, captures a complete 1:30 second picture of the affected area. Additionally, the image sensor may be a line-scan camera that captures a single line concurrently. As the item moves through the line scanner, a two-dimensional picture is generated. An analog-to-digital converter is used to digitise any image sensor or camera output that is not inherently digital. The sensor type and the resulting image are contingent upon the application.

The processing of this picture occurs subsequent to the creation of the digital image. Preprocessing focusses on enhancing the image to increase the likelihood of success in future treatments. Typically, these techniques include enhancing contrast, removing background noise, and separating areas with a texture indicative of a numerical data probability.

The subsequent step pertains to segmentation. Segmentation disassembles an input into its constituent elements. In the realm of digital imagery, one of the most challenging issues is often independent segmentation. An effective resolution to an image problem is attained using a robust segmentation method. Conversely, segmentation algorithms that are either insufficiently robust or too unpredictable will likely fail.

In character identification, segmentation involves extracting words and characters from the background. Raw pixel data, delineating the perimeter of a region or each point inside it, often results from the segmentation phase. Data conversion to a computer-compatible format is essential in all instances. The first option is to represent the data as a border or a whole region.

Boundary representation is suitable when focussing on exterior form components such as entrances or reflections. Regional representation is beneficial when concentrating on internal attributes such as texture and skeletal morphology. In other settings, however, both assertions are compatible. This transpires in character recognition applications, where techniques dependent on internal features, such as skeletons and boundary shapes, are often necessary. Securing a representative is just half the challenge in converting raw data into a format comprehensible by computers. A mechanism for delineating the data should be provided to emphasise pertinent features. The emphasis of description, also known as feature selection, is the extraction of characteristics that provide particular quantitative information necessary for distinguishing between object classes. In character identification, descriptive adjectives such as "lake" or "bay" are beneficial since they help distinguish between various letters of the alphabet. The last level is to acknowledge and comprehend. An item is tagged in the recognition process using the information from the descriptors. The primary objective of AI data engineering is to provide the structure and protocols for managing extensive datasets used in AI systems. It entails overseeing pipelines, storing data, and doing preprocessing. Prior to input into machine learning models, computer vision depends on AI data engineering to accurately organise, annotate, and manage raw visual data [7]. This article also addresses the use of computer vision and artificial intelligence data engineering in the categorisation and identification of medical images via a case study.

# International Journal of Innovative Research in Science, Engineering and Technology

(A High Impact Factor, Monthly, Peer Reviewed Journal) | Impact Factor: 7.249 |

Website: [www.ijirset.com](http://www.ijirset.com)

Vol. 8, Issue 11, November 2019

## II. RELATED WORK

This section contains and investigation on existing deep learning and machine learning techniques for image processing and image classification.

A modified probabilistic neural network produced data on a gray-level co-occurrence matrix, as shown by Chang et al. [8]. The study's findings unequivocally demonstrated this. A comprehensive elucidation of the distinctive characteristics of the localised primary hepatic border is provided. Hepatomas and haemangiomas are the most common forms of liver tumours, however several others exist. A multitude of other options is also accessible. Thirty liver specimens will be used in the suggested methodology for diagnosing liver disease. The mechanical recognition and extraction of the CT liver boundary is the function of an innovative categorisation system known as detect-before-extract. A synonym for this procedure is "detect-before-extract."

In their assessment of image processing techniques, [9] used an ultrasound scan of a diseased liver to formulate findings. The approaches included feature extraction, feature selection, and classification. This work supports the notion that GLCM is a universally widespread characteristic of the heterogeneity and granularity of liver tissue. Researchers Amiya Halder and associates discovered that clustering fuzzy Hopfield neural networks facilitated the generation of genetic algorithm (GA) populations and rapidly attained superior image segmentation. Due to this and genetic algorithms, image segmentation is now attainable. This method enables the automatic segmentation of greyscale photos into their constituent elements, eliminating the need for human intervention. The ultimate aim of the approach is to provide reliable picture segmentation using intensity and neighbourhood connectivity information. This will be accomplished in due course.

Peter Angeline and colleagues [11] conduct a comprehensive study on an evolutionary methodology for constructing recurrent neural networks. Population-based search algorithms that have shown efficacy in very demanding circumstances include evolutionary programming and the genetic algorithm (GA). Utilising proven methodologies for deducing recurrent neural network architectures and weight parameters, a "class" of designs has been generated. Due to the use of these procedures in the development of these designs, they are often sanctioned for each application. This research presents an evolutionary method capable of concurrently learning the structure and weights of recurrent networks. The GA, deemed insufficient for the purpose, is being replaced by this programmed evolutionary method. The authors of this study contend that, despite the widespread use of the GA for this purpose, it is not the most efficient tool for the job.

Shafaf Ibrahim et al. [12] elaborated on three distinct methodologies: the Seed-Based Region Growing technique, the Adaptive Network-Based Fuzzy Inference System framework, and the Fuzzy c-Means (FCM) strategy. Each of these three methodologies adopts a distinct perspective on the same matter. When compared, these three techniques provide intriguing avenues for the classification of luminous aberrations. No known dark anomaly segmentation performance has yielded a correlation value of any notable significance. These considerations have resulted in a reduction in the precision required for the segmentation of dark anomalies relative to lighter ones.

Havaei [13] proposed the use of networks capable of adapting to low- and high-grade glioblastoma pictures derived from MR scans. They presented an innovative convolutional neural network (CNN) architecture with prospective applications in computer vision. They incorporated this into their presentation well. This was achieved by investigating a cascade architecture, characterised by the process of inputting the output of one convolutional neural network (CNN) into the input of another, typically used CNN. Employing this method may substantially decrease the time required to get a passing result on the 2013-BRATS test dataset. An novel feature of the CNN concept is its proposed route architecture, capable of detecting both ambient inputs and localised properties of brain regions. A crucial new advancement. This enhances the distinctiveness of the notion. The author demonstrates that addressing diverging labelling distributions is a straightforward issue when using the two-phase tracking method.

# International Journal of Innovative Research in Science, Engineering and Technology

(A High Impact Factor, Monthly, Peer Reviewed Journal) | Impact Factor: 7.249 |

Website: [www.ijirset.com](http://www.ijirset.com)

Vol. 8, Issue 11, November 2019

Papik et al. [14] sought to provide a concise summary of the topic by examining literature over the last five to six years. The review focused on publications most relevant to the argument by using examples of possible medical uses of neural networks. The objective of the study was to provide a concise summary of the topic. To comprehend the complexities of research on neural network applications, they analysed several medical circumstances. This innovative technique will expedite the production of advanced diagnostic tools in microscopy, electrocardiography, and gastrography. Muhammad Imran Razzakanalysed current advancements in deep learning architecture and its optimisation for medical image segmentation and classification in his study [15].

This article compares many deep learning model designs. During the application of deep learning to medical imaging, they discussed several challenges that emerge. Their analysis revealed several distinct challenges related to deep learning, including inadequate data, privacy and legal issues, the need for highly qualified medical professionals, unconventional data and machine learning methodologies, among others. Nonetheless, the use of deep learning has shown to be an effective strategy for addressing analogous issues. An example of the "black-box issue" is a neural network that is simple to develop, but whose output remains inexplicable. In addition to its widespread acceptance and almost complete absence of criticism, the deep learning methodology is distinguished by its exceptional complexity. A multitude of organisations, including prestigious universities, hospitals, and IT firms, are partnering to identify optimal solutions for medical imaging research on a global scale, since contributions may be made by anybody.

Muhammad and Yun [16] localised cancer in MR images using five distinct image segmentation approaches. Strategies included methods such as Histogram Thresholding, Seeded Region Growing, Fuzzy C-Means, and Watershed Segmentation. Compared to other analytical methods, the seeded area construction technique has superior statistical and visual performance. This method was deemed optimal after evaluating the distinctive attributes of medical imaging and the pressing need to differentiate visually indistinguishable regions in the most efficient and effective way.

Pereira et al. [17] devised a convolutional neural network (CNN) technique using an architecture with a small 3x3 kernel for the automated segmentation of brain tumours in magnetic resonance imaging (MRI) data. A CNN-based approach enabled us to do this. For instance, these kernels facilitate the creation of more complex architectural designs and mitigate overfitting. All patch dimensions, intensities, and bias fields were standardised during the preprocessing phase. By rearranging the training patches and using High-Grade Glioma instances to augment the quantity of uncommon Low-Grade Glioma classes, we might potentially enhance the overall number of training patches used throughout the training process. This will enable us to use a broader array of training patches. They demonstrated the effectiveness of their technology in the 2013 Brain Tumour Segmentation Challenge (BRATS-13).

Padole and Chaudhari [18] encountered difficulties in identifying brain tumours with MRI imaging. To circumvent these issues, they chose to use component analysis. A method using Normalised cut (Ncut) and mean shift approaches to autonomously determine the surface area of brain tumours. The first phase of the three-part procedure, "establishing distinct zones," utilises the "mean shift" methodology. The subsequent strategy for clustering utilises the Ncut methodology. The last phase involves using component analysis to precisely identify the location of the cancer inside the brain.

Dahshan et al. [19] found that computer-aided diagnosis poses the greatest difficulty after evaluating all existing methods for human brain MRI classification and segmentation. The researchers developed a hybrid intelligent machine learning method to automate the identification of cancer in the patient's brain MRI. Disaggregating an image into its fundamental components is achievable via the use of a neural network and a return pulse. Images are classified as "normal" or "abnormal" with a feed-forward neural network trained by backpropagation. A computer is necessary to do this activity. The study utilises 101 pictures obtained from a database of magnetic resonance imaging (MRI) scans of the human brain. Of the entire 87, only 14 are classified as normal, based on current findings. Research evidence indicates a strategy with an astonishing 99% accuracy rate.

# International Journal of Innovative Research in Science, Engineering and Technology

(A High Impact Factor, Monthly, Peer Reviewed Journal)|Impact Factor: 7.249|

Website: [www.ijirset.com](http://www.ijirset.com)

Vol. 8, Issue 11, November 2019

## III. DEEP LEARNING TECHNIQUES FOR COMPUTER VISION

Common deep learning methods for computer vision are discussed in detail in this section.

**The LeNet-5 Architecture** The conventional neural network architecture is used for recognising MNIST handwritten digits using a pattern recogniser. The LeNet-5 design has three fully connected layers, two pooling layers, and one convolutional layer with a tanH activation function. A final fully connected layer is used to provide the accurate output after the learning of non-linear combinations of image data by two preceding fully connected layers.

Alex Krizhevsky's architecture, known as AlexNet as shown in figure 1, accumulates knowledge by training on large datasets. The quantity of convolutional layers used is determined experimentally; there are no definitive guidelines for constructing the architecture. A standard design has around 60 million parameters distributed over five convolutional layers, three pooling layers, and two fully connected layers. It use the ReLU activation function instead of the Sigmoid or tanH activation functions. While addressing the vanishing gradient problem of the sigmoid function, ReLU operates five times faster without compromising accuracy. This approach mitigates the issue of overfitting by including a Dropout layer. Dropout layers are associated with probability (p) and are implemented subsequent to each Fully Connected layer. The activations are deactivated with a probability of p. This varied collection of neurones signifies a heterogeneous architecture, then trained laterally with assigned weights, with an additional weight allocated for each component. The designs will generate a total of  $2^n$  subsets when n neurones are connected to the dropout layer. To mitigate the overfitting problem, it provides a regularised structural model. Alternatively, neurones may be randomly picked, enabling them to separately acquire important features and preventing mutual adaptation.

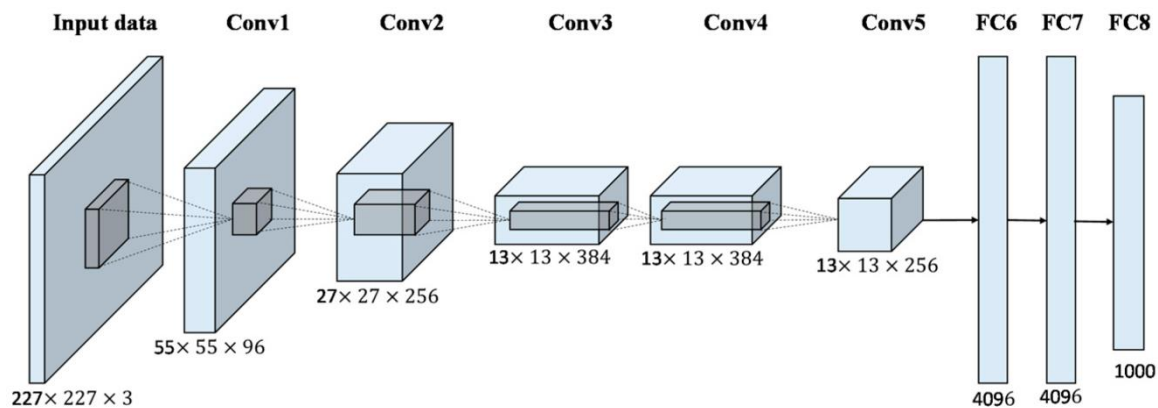


Figure 1: AlexNet Architecture

The Visual Geometry Group, located in Oxford, developed this architecture, thus the designation VGG. It enhances the AlexNet architecture by including 16 layers of learning parameters, with the first two convolutional layers use a  $3 \times 3$  filter instead of kernel sizes of 11 and 5, respectively. VGG-D is regarded as a straightforward architectural model due to its absence of hyperparameters. For convolutional layers, a  $3 \times 3$  kernel size with a stride of 1 is commonly used, whereas pooling layers adopt SAME padding with a  $2 \times 2$  stride. A pooling layer succeeds two convolutional layers in the network's architecture. Blocks of two convolutional layers and a pooling layer are iteratively repeated. To extract more complex image information, these blocks are constructed with analogous filter sizes that are used frequently. Following VGG, the concept of constructing networks based on blocks gained popularity. The execution of VGG is very time-consuming and resource-intensive, notwithstanding its attainment of superior accuracy on the ImageNet dataset. The extensive scope of the convolutional layers renders it inefficient.

In comparison to previous CNN architectures, the GoogLeNet model is far more intricate and profound. Thus, to reduce the number of parameters, this model construction relies on several minuscule convolutions. Compared to AlexNet's 60 million parameters, this architecture's 4 million parameters represent a substantial reduction, albeit

# International Journal of Innovative Research in Science, Engineering and Technology

(A High Impact Factor, Monthly, Peer Reviewed Journal) | Impact Factor: 7.249 |

Website: [www.ijirset.com](http://www.ijirset.com)

Vol. 8, Issue 11, November 2019

including 22 layers of DCNN. The paramount new feature is a module capable of amalgamating many filter widths and sizes into a single entity. Each of the nine foundational layers of GoogLeNet consists of six convolutional layers (CL) and one perceptron layer (PL), along with two convolutional and pooling layers. The inception module, being the basic unit of the network, facilitates a reduction in computational requirements. Following several adjustments, GoogLeNet eliminated the fully-connected layers in favour of a simple global average pooling layer. This facilitates the reduction of parameters significantly. Consequently, GoogLeNet may eliminate the fully connected layers without sacrificing accuracy by using an extensive network.

Kaiming introduced the Residual Neural Network, also known as ResNet. This design introduces a notion referred to as skip connections. The input matrix undergoes two linear transformations using the ReLU activation function. Increasing the network's depth enhances its accuracy rate; however, this also leads to the problem of overfitting. The use of negligible learning results in a diminishing gradient, as the challenge of increasing layer depth necessitates increasingly complex weight adjustments from the output layer. The second issue is that training a deeper network leads to an accelerated training rate, complicating optimisation within an extensive parameter space. Researchers have created a model named ResNet to train deep networks, which constructs networks using modules referred to as residual models.

## IV. RESULTS

In experimental set up, 200 CT scans related to malignant pleural mesothelioma are selected from [20]. 150 CT scans are used to train classification model. 50 CT scan images are used to test the classification model. Sample CT scan image is shown in figure 2

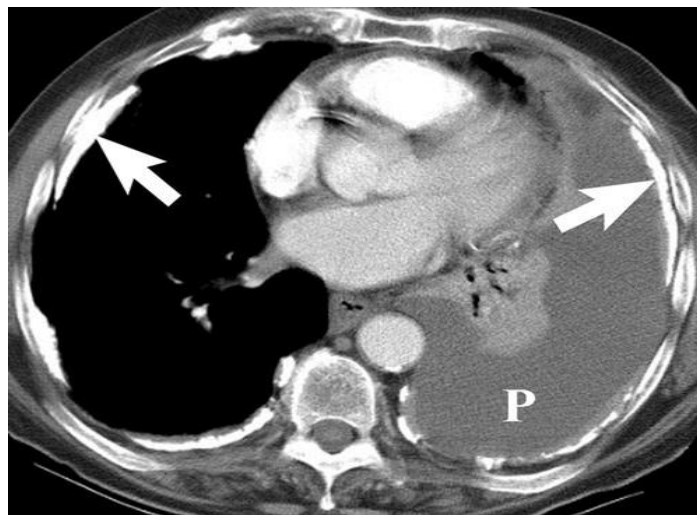


Figure2 CT Scan Showing malignant pleural mesothelioma

$$\text{accuracy} = (tp + tn)/N$$

$$\text{sensitivity} = tp\_rate$$

$$\text{specificity} = tn\_rate$$

$$\text{precision} = tp/(tp + fp)$$

$$\text{recall} = \frac{tp}{tp + fn} \quad f\_measure = 2 * ((\text{precision} * \text{recall})/(\text{precision} + \text{recall}))$$

Where tp, tn, fp and fn represent the sum of a true positive, true negative, false positive and false negative, N labels the

# International Journal of Innovative Research in Science, Engineering and Technology

(A High Impact Factor, Monthly, Peer Reviewed Journal)|Impact Factor: 7.249|

Website: [www.ijirset.com](http://www.ijirset.com)

Vol. 8, Issue 11, November 2019

total number of elements. Results are shown in figure 3. Alexnet is performing better than all other CNN models.

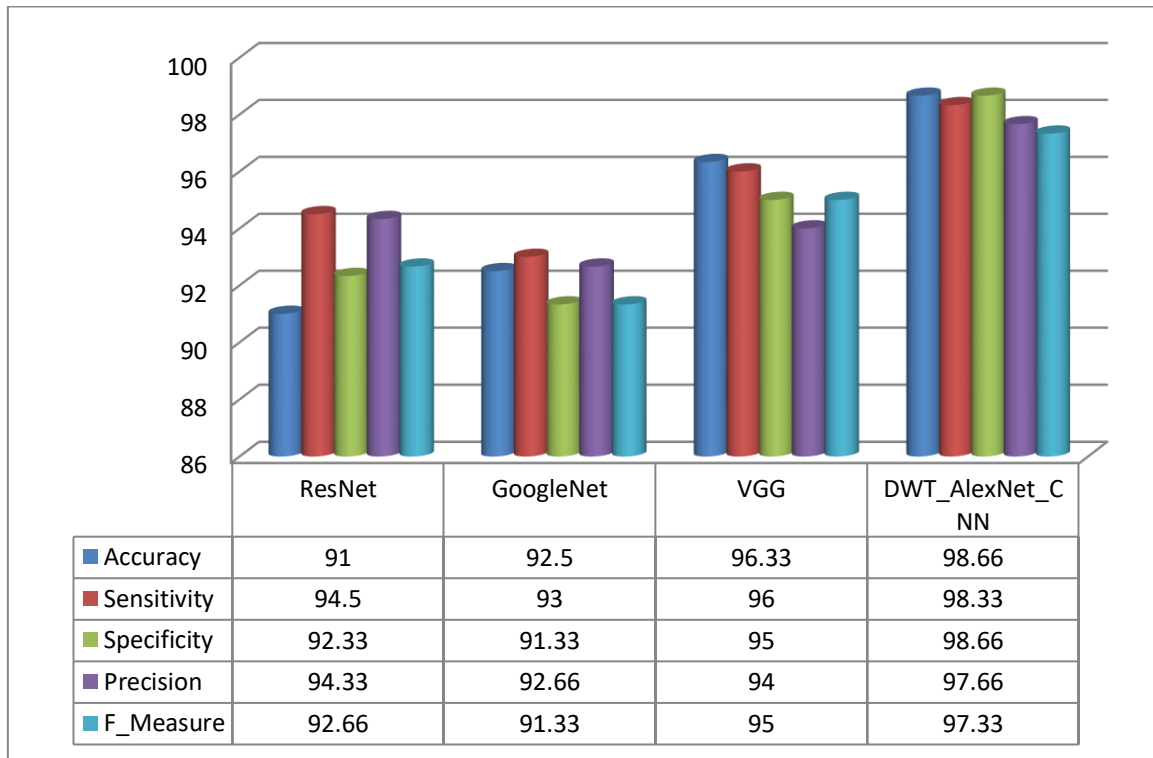


Figure 3: Result Comparison of Different CNN models for medical image classification and detection

## V. CONCLUSION

The confluence of computer vision and artificial intelligence data engineering is investigated in this study. The research also addresses the issues that are currently being faced, potential solutions, and recent advancements in both of these domains. The study addresses the work that has been made in the aforementioned areas towards designing the next-generation artificial intelligence systems. This discussion is based on current breakthroughs and real-world application cases in the industry. The goal of computer vision, which is a branch of artificial intelligence, is to make machines see things the same way people do. Computer vision, which means that computers can understand and draw complex conclusions from digital photos and movies, is important for making AI systems that work well in real life. Deep learning, especially through convolutional neural networks, has made computer vision systems much more accurate in terms of how they work. A case study in the application of computer vision and artificial intelligence data engineering is also described in this paper. The case study concentrates on the categorization and identification of medical photographs.

# International Journal of Innovative Research in Science, Engineering and Technology

(A High Impact Factor, Monthly, Peer Reviewed Journal) | Impact Factor: 7.249 |

Website: [www.ijirset.com](http://www.ijirset.com)

Vol. 8, Issue 11, November 2019

## REFERENCES

- [1] W. Ouyang, X. Zeng, X. Wang et al., "DeepID-Net: Object Detection with Deformable Part Based Convolutional Neural Networks," IEEE Transactions on Pattern Analysis and Machine Intelligence, vol. 39, no. 7, pp. 1320–1334, 2017.
- [2] A. Diba, V. Sharma, A. Pazandeh, H. Pirsiavash, and L. V. Gool, "Weakly Supervised Cascaded Convolutional Networks," in Proceedings of the 2017 IEEE Conference on Computer Vision and Pattern Recognition (CVPR), pp. 5131–5139, Honolulu, HI, July 2017.
- [3] N. Doulamis and A. Voulodimos, "FAST-MDL: Fast Adaptive Supervised Training of multi-layered deep learning models for consistent object tracking and classification," in Proceedings of the 2016 IEEE International Conference on Imaging Systems and Techniques, IST 2016, pp. 318–323, October 2016.
- [4] N. Doulamis, "Adaptable deep learning structures for object labeling/tracking under dynamic visual environments," Multimedia Tools and Applications, pp. 1–39, 2017.
- [5] L. Lin, K. Wang, W. Zuo, M. Wang, J. Luo, and L. Zhang, "A deep structured model with radius-margin bound for 3D human activity recognition," International Journal of Computer Vision, vol. 118, no. 2, pp. 256–273, 2016.
- [6] S. Cao and R. Nevatia, "Exploring deep learning based solutions in fine grained activity recognition in the wild," in Proceedings of the 2016 23rd International Conference on Pattern Recognition (ICPR), pp. 384–389, Cancun, December 2016.
- [7] A. Toshev and C. Szegedy, "DeepPose: Human pose estimation via deep neural networks," in Proceedings of the 27th IEEE Conference on Computer Vision and Pattern Recognition, CVPR 2014, pp. 1653–1660, USA, June 2014.
- [8] E.L. Chen, P.C. Chung, C.L. Chen, H.M. Tsai and C.I. Chang, "An automatic diagnostic system for CT liver image classification", IEEE Transactions on Biomedical Engineering, vol. 45, no. 6, pp. 783-794, 1998.
- [9] P. Bharti, D. Mittal and R. Ananthasivan, "Computer-aided characterization and diagnosis of diffuse liver diseases based on ultrasound imaging", Ultrasonic Imaging, vol. 39, no. 1, pp. 33-61, 2016.
- [10] A. Halder, S. Pramanik and A. Kar, "Dynamic image segmentation using Fuzzy C Means based Genetic Algorithm", International Journal of Computer Applications, vol. 28, no. 6, pp. 15-20, 2011.
- [11] P. Angeline, G. Saunders and J. Pollack, "An evolutionary algorithm that constructs recurrent neural networks", IEEE Transactions on Neural Networks, vol. 5, no. 1, pp. 54-65, 1994.
- [12] S. Ibrahim, N. Elaiza and M. Manaf, "Seed-Based Region Growing (SBRG) vs Adaptive Network-Based Inference System (ANFIS) vs Fuzzy c-Means (FCM): Brain Abnormalities Segmentation", SSRN Electronic Journal, vol. 4, no. 8, pp. 315-325, 2010.
- [13] Havaei M, Davy A, Warde-Farley D, Biard A, Courville A, Bengio Y, et al. Brain tumor segmentation with deep neural networks. Medical Image Analysis. 2017;35:18–31. doi:10.1016/j.media.2016.05.004
- [14] K. Papik, B. Molnar, R. Schaefer, Z. Dombovari Z. Tulassay and J. Feher" Application of neural networks in medicine — a review" Diagnostics and Medical Technology, vol 4, no 3, pp. 539-546, 1998.
- [15] M. Razzak, S. Naz and A. Zaib, "Deep learning for medical image processing: overview, challenges and the future", Lecture Notes in Computational Vision and Biomechanics, vol. 26, pp. 323-350, 2017.
- [16] Muhammad Ali Qadar, Yan Zhaowen, Brain Tumor Segmentation: A Comparative Analysis, IJCSI International Journal of Computer Science Issues, Volume 11, Issue 6, No 1, November 2014,1694-0784
- [17] S. Pereira, A. Pinto, V. Alves, and C. A. Silva, "Brain tumor segmentation using convolutional neural networks in MRI Images," IEEE Transactions on Medical Imaging, vol. 35, no. 5, pp. 1240–1251, 2016.
- [18] V. Padole and D.S. Chaudhari, "Detection of the brain tumor in MRI images using the mean shift algorithm and normalized cut method", International Journal of Engineering and Advanced Technology, pp. 52-56, 2012.
- [19] E. El-Dahshan, H. Mohsen, K. Revett and M. Salem, "Computer-aided diagnosis of human brain tumor through MRI: A survey and a new algorithm", Expert Systems with Applications, vol. 41, no. 11, pp. 5526-5545, 2014.
- [20] <https://wiki.cancerimagingarchive.net/display/Public/RIDER+Lung+CT>