

18th September 2020

Organized by

Department of Computer Science, Parvathy's Arts and Science College, Dindigul, Tamilnadu, India

Object–Parameter Approaches to Predicting Unknown Data Using Fuzzy Graph Database

Dr..R.S.Mohan¹, Dr.R.Vijayalakshmi²

Department of Computer Science, Government Arts and Science College, Sivakasi, Tamilnadu, India¹

Department of Computer Science, Government Arts and Science College, Sivakasi, Tamilnadu, India²

ABSTRACT: These days multi dimensional data base world there is a push to incorporate data bases communicated in various data models. We expect the presence of an data plan for the important and Fuzzy diagram data base. The point of the article is to show prospects of combination of social and Fuzzy graph data bases with the assistance of a useful data model and its NoSQL . The structure blocks used to make the data base can be depicted by some declaration of normal language. There will be clear and authoritative sorts for every essential hub. Each hub in a fuzzy graph which has marked User that has a place with a solitary individual and is associated with connections portraying how every client is associated. As we see beneath, Babu and Seetha follow one another, as do Seetha and Narayan, however in spite of the fact that Narayan follows Babu, Babu hasn't (yet) responded. This associations first way to deal with Fuzzy data implies connections and associations are persevered (and not simply incidentally determined) through all aspects of the Fuzzy data lifecycle: from thought, to plan in a legitimate model, to execution in a physical model, to activity utilizing a question language and to constancy inside an adaptable, solid Fuzzy data base framework. In contrast to other data base frameworks, this methodology implies your application doesn't need to gather Fuzzy data associations utilizing things like unfamiliar keys or out-of-band handling like MapReduce.

KEYWORDS: fuzzy graph database, incomplete fuzzy soft set, object-parameter approach, prediction, similarity measures.

I. INTRODUCTION

Figuring, a fuzzy graph data base (FGDB) is a data set that utilizes fuzzy graph structures for semantic questions with vertex, edges, and properties to speak to and store data.[1] A key idea of the framework is the graph (or edge or relationship). The diagram relates the data things in the store to an assortment of vertex and edges, the edges speaking to the connections between the vertex. The connections permit data in the store to be connected together legitimately and, as a rule, recovered with one activity. Graph data bases hold the connections between data as a need. Questioning connections is quick since they are unendingly put away in the data base. Connections can be naturally pictured utilizing graph data bases, making them valuable for intensely between associated data.[2] apparatus is liberated from the restriction referenced above, which influenced other regularly utilized methodologies. The nonattendance of any limitations on the estimated portrayal in delicate set hypothesis makes it effectively relevant by and by. We can utilize any parametrization we like: with the assistance of words and sentences, capacities, mappings, genuine numbers, etc. From that point forward, the summed up models of delicate sets have been grown quickly to satisfy different needs in functional circumstances by consolidating delicate sets with Fuzzy sets (Maji et al., 2001), unpleasant sets (Feng et al., 2011), ambiguous sets (Xu et al., 2010), stretch esteemed Fuzzy sets (Yang et al., 2009), span esteemed intuitionistic Fuzzy delicate sets (Jiang et al., 2010), and with different hypotheses. Right now, research on delicate set hypothesis and half and half delicate set hypothesis has been exceptionally dynamic and there has been some advancement concerning handy applications (Roy and Maji, 2007; Jiang et al., 2011; Herawan and Deris, 2011; Quin et al., The growing ambitious use of data systems in the amount of data volume and data recovery mechanisms has fostered the accelerated development of technology. In this regard, query specification mechanisms that resembling natural language expression and human thought is sought. Therefore, it would be convenient to provide flexible query capabilities allowing users to express requirements involving preferences.

A useful asset utilized in the administration of data bases to make inquiries in a more adaptable manner has been the Fuzzy sets (Zadeh, 1965; Cox, 1995; Galindo, 2008; Pivert and Bosc, 2012), which vests conventional data sets with a more instinctive methodology shut to the common language while recovering data from data sources. This kind of sets

18th September 2020

Organized by

Department of Computer Science, Parvathy's Arts and Science College, Dindigul, Tamilnadu, India

has been applied to a few data regions, for example, Control Systems, Decision-production Systems, and Expert Systems. In (Ma and Yan, 2010), it is expressed that the hypothesis of Fuzzy sets has been broadly applied to broaden a few models and the executives frameworks data base, which has brought about numerous commitments. In such manner, diverse exploration ventures have been led overall centered around remembering fluffiness for data bases (Bosc and Pivert, 1995a; Kacprzyk and Zadrozny, 1995; Goncalves and Tineo, 2008; Galindo, 2008; Yager, 2010; Ma and Ya, 2010; Pivert and Bosc, 2012). By and by, there are barely any known created applications that appreciate the advantages of Fuzzy data bases (Galindo et al, 2006; Goncalves and Tineo, 2008; Fernandez et al, 2008; Delgado et al, 2008). We spoke of imprecision in database when the data is incomplete or uncertain. Thus, an approximate value or a term describing it is stored instead of an exact value. In general, we could be talking about data inaccuracies or imprecision in queries, i.e., imprecise terms may be stored as data values or could be used in the query criteria. Thus there are mainly two different approaches that address the vagueness of the databases. Those focused on the data (Galindo, 2008) and those focused on queries (Pivert and Bosc, 2012).

The outcomes created by an application framework, in light of traditional DBMS, carefully conform to the consistence with the hunt measures. However, they are not considering different outcomes that estimated in certain degree to the reaction; these could be introduced to client as substitute outcomes. Search rules in the frameworks dependent on exemplary DBMS are exact, while Fuzzy DBMS take into account characterizing more adaptable rules that better acclimate to human idea. Old style data bases utilize all the outcomes got, while Fuzzy Querying Systems just utilize those outcomes that meet the base degree of fulfillment characterized by clients. Old style questions limit their outcomes since depend on the utilization of Boolean Logic, where a recommendation just acknowledges two qualities: valid or bogus.

Frameworks dependent on Fuzzy data bases are nearer to human through. The utilization of Fuzzy rationale better adjusts to genuine world and it even can comprehend and manage semantic terms or articulations in regular language, for example, "it is truly simple", "he isn't excessively long", "he is excessively short", and so on.

In processing, a graph data base (GDB) is a data set that utilizes diagram structures for semantic inquiries with vertex, edges, and properties to speak to and store data.[1] A key idea of the framework is the graph (or edge or relationship). The graph relates the data things in the store to an assortment of vertex and edges, the edges speaking to the connections between the vertex. The connections permit data in the store to be connected together legitimately and, as a rule, recovered with one activity. Diagram data bases hold the connections between data as a need. Questioning connections is quick since they are ceaselessly put away in the data base. Connections can be instinctively imagined utilizing diagram data bases, making them helpful for intensely between associated data.[1]

Graph data bases are a kind of NoSQL data set, made to address the constraints of social data bases. While the graph model expressly spreads out the conditions between vertex of data, the social model and other NoSQL data base models interface the data by understood associations. As it were, connections are top notch elements in a diagram data base and can be marked, coordinated, and given properties. This is contrasted with social methodologies where these connections are inferred and should be reified at run-time. Diagram data bases are like 1970s organization model data bases in that both speak to general graphs, yet network-model data bases work at a lower level of abstraction[2] and need simple crossing over a chain of edges.

An data structure called a graph comprises of vertex and edges; a hub speaks to an element in data, and an edge speaks to a connection between two elements. Additionally, graphs tolerating the property diagram model (PGM) can give data, for example, an individual's sexual orientation, age, personal residence. All graph data base (GDB) for the most part uphold this diagram model. Ordinary GDBs can't abstain from filtering all the vertex or determined marked ones from the data base when the customers issue a question. This cycle isn't proficient on the grounds that inquiries filter pointless vertex when an executing an inquiry that has conditions that it utilizes properties of graph parts. So as to determine this issue, we examine how hub and edge properties can be questioned all the more proficiently while keeping up the structure of the graph. Accordingly, in this investigation, we simply propose a methodology for diagram data the board, which independently stores vertex/edges data and property data into discrete data structures. What's more, we depict an arrangement for leading an assessment of our methodology since it is the proposition stage.

Fuzzy Graph data bases contrast from graph process motors. Fuzzy Graph data bases are innovations that are interpretations of the social online exchange preparing (OLTP) data sets. Then again, graph figure motors are utilized in online logical preparing (OLAP) for mass investigation. Graph data bases pulled in impressive consideration during the 2000s, because of the achievements of significant innovation partnerships in utilizing restrictive diagram databases,[3] and the presentation of open-source graph data bases. A diagram is made out of two components: a hub and a relationship.



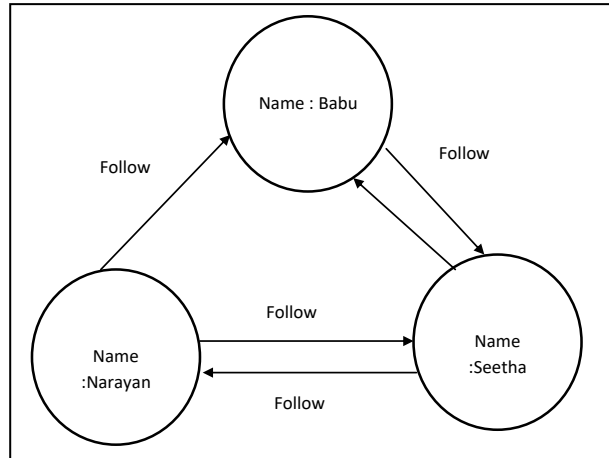
18th September 2020

Organized by

Department of Computer Science, Parvathy's Arts and Science College, Dindigul, Tamilnadu, India

Each node represents an entity (a person, place, thing, category or other piece of data), and each relationship represents how two nodes are associated.

For example,



Twitter is a perfect example of a graph the two nodes dosa and idli would have the relationship is a type of pointing from dosa to idli. Consider another example: Twitter is a perfect example of a graph database connecting 330 million monthly active users database connecting 330 million monthly active users. If this example makes sense to you, then you've already grasped the basics of what makes up a graph database.

II. FUNCTIONAL APPROACH TO DATA MODELLING

The functional approach used here is based on a typing system. Different types can be used. For our purposes, we use elementary types and two structured types . Typed functions appropriate to modelling real data objects are attributes viewed as empirical typed functions that are described by an expression of a natural language [11]. A lot of papers are devoted to this approach studied mainly in 90ties in context of conceptual modelling of databases. It discusses the notion of a conceptual/database schema for GDB and relational databases.

III. TYPES

A hierarchy of types is constructed as follows. We assume the existence of some (*elementary*) types S_1, \dots, S_k ($k \geq 1$) constituting a *base* \mathbf{B} . More complex types are constructed in the following way. If S, R_1, \dots, R_n ($n \geq 1$) are types, then

- (i) $(S:R_1, \dots, R_n)$ is a (*functional*) type,
- (ii) (R_1, \dots, R_n) is a (*tuple*) type.

The set of types \mathbf{T} over \mathbf{B} is the least set containing all types from \mathbf{B} and those given by (i)-(ii). When S_i in \mathbf{B} are interpreted as non-empty sets, then $(S:R_1, \dots, R_n)$ denotes the set of all (total or partial) functions from $R_1 \times \dots \times R_n$ into S , (R_1, \dots, R_n) denotes the Cartesian product $R_1 \times \dots \times R_n$.

The elementary type $Bool = \{TRUE, FALSE\}$ is also in \mathbf{B} . It allows to model sets (resp. relationships) as unary (resp. n-ary) characteristic functions. The notions of a set and a relation are then redundant here. Thus, relations in an RDB can be simply modelled as their characteristic functions, i.e. functionally typed objects.

The fact that X is an object of type $R \in \mathbf{T}$ can be written as X/R , or " X is the R -object". For each typed object o the function type returns $type(o) \in \mathbf{T}$ of o . Logical connectives, quantifiers and predicates are typed functions, e.g., **and**/ $(Bool:Bool, Bool)$, **implies**/ $(Bool:Bool, Bool)$, R -identity $=_R$ is $(Bool:R, R)$ -object, universal R -quantifier Π_R , and existential R -quantifiers Σ_R are $(Bool:(Bool:R))$ -objects. R -singularizer $I/(R:(Bool:R))$ denotes the function whose value is the only member of an R -singleton and in all other cases the application of IR is undefined. Arithmetic operations are $(Number: Number, Number)$ -objects, $COUNT_S/((Number:(Bool:S))$ is an aggregation function. The approach also enables to type functions of functions, etc.



18th September 2020

Organized by

Department of Computer Science, Parvathy's Arts and Science College, Dindigul, Tamilnadu, India

Fuzzy graph hypothesis was presented by Azriel Rosenfeld in 1975. In spite of the fact that it is youthful, it has been developing quick and has various applications in different fields. In this paper, we present ordinary Fuzzy diagrams, complete degree and absolutely customary Fuzzy graphs. We make a relative report among standard and absolutely customary Fuzzy graphs however different models. We give a vital and adequate condition under which they become identical. At that point we give a portrayal of normal Fuzzy graphs where the basic fresh diagram is a cycle. Additionally we concentrate a few properties of ordinary Fuzzy graphs and look at whether they hold for absolutely standard Fuzzy diagrams. First we go through some definitions and results which can be found in [14]– [20]

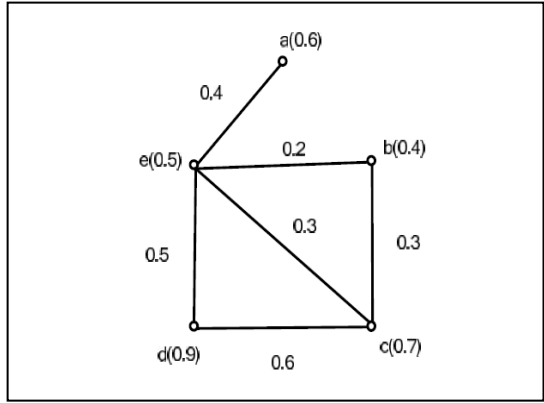
Definition 1.1: A fuzzy graph G is a pair of functions $G:(\sigma,\mu)$ where σ is a fuzzy subset of a non empty set V and μ is a symmetric fuzzy relation on σ . The underlying crisp graph of $G:(\sigma,\mu)$ is denoted by $G^*(V,E)$ where $E \subseteq V \times V$. A fuzzy graph G is complete if $\mu(uv) = \sigma(u) \wedge \sigma(v)$ for all $u,v \in V$ where uv denotes the edge between u and v .

A fuzzy subset of a non – empty set S is a mapping $\sigma : S \rightarrow [0,1]$ which assigns to each element ' x ' in S a degree of membership $0 \leq \sigma(x) \leq 1$.

A fuzzy relation on S is a fuzzy subset of $S \times S$. A fuzzy relation μ on S is a fuzzy relation on the fuzzy subset σ if $\mu(x, y) \leq \sigma(x) \wedge \sigma(y)$ for all x, y in S where \wedge stands for minimum.

A fuzzy relation on the fuzzy subset σ is reflexive if $\mu(x,x) = \sigma(x)$ for all $x \in S$

A fuzzy relation μ on S is said to be symmetric if $\mu(x,y) = \mu(y,x)$ for all x, y in S



IV. HOW FUZZY GRAPH DATABASES WORK

Unlike other database management systems (DBMS), relationships take first priority in graph databases. In the fuzzy graph world, connected data is equally (or more) important than individual data points.

This associations first way to deal with data implies connections and associations are persevered (and not simply briefly determined) through all aspects of the data lifecycle: from thought, to plan in a sensible model, to execution in a physical model, to activity utilizing a question language and to constancy inside a versatile, solid data base framework..

Unlike other database systems, this approach means your application doesn't have to infer data connections using things like foreign keys or out-of-band processing, like MapReduce.

18th September 2020

Organized by

Department of Computer Science, Parvathy's Arts and Science College, Dindigul, Tamilnadu, India

The result: Your data models are simpler and yet more expressive than the ones you'd produce with relational databases or NoSQL (Not only SQL) stores.

A lot of databases have similar characteristics, but graph databases have a few things that make them unique. Here are the two most important properties of graph database technologies that you need to understand:

V. GRAPH STORAGE

Some graph data bases utilize local graph stockpiling that is explicitly intended to store and over fuzzy graph – from uncovered metal on up. Other chart advancements utilize social, columnar or object-arranged data bases as their stockpiling layer. Non-local stockpiling is frequently more slow than a local methodology since the entirety of the fuzzy graph associations must be converted into an alternate Graph accumulating

Some diagram data bases utilize local graph stockpiling that is explicitly intended to store and oversee diagrams – from uncovered metal on up. Other diagram advances utilize social, columnar or object-arranged data bases as their stockpiling layer. Non-local stockpiling is frequently more slow than a local methodology since the entirety of the graph associations must be converted into an alternate data model data.

VI. GRAPH PROCESSING

Native graph processing (a.k.a. *index-free adjacency*) is the most efficient means of processing data in a graph because connected nodes physically point to each other in the database. Non-native graph processing engines use other means to process Create, Read, Update or Delete (CRUD) operations that aren't optimized for handling connected data.

When it comes to current graph database technologies, Neo4j leads the space as the most native when it comes to both graph storage and processing. If you're interested in learning more about what makes a native graph database different from non-native graph technology (and why it matters), then read the Native vs. Non-Native Graph Technology later in this Beginners series.

The universal NoSQL data bases (e.g., [4]) speak to a totally better approach for considering data bases such. Practically speaking, it implies one of the most essential decisions to make when building up an application is whether to utilize a SQL or NoSQL data base to store the data. One perception says that neither everything is acceptable in NoSQL nor everything is so terrible in social data bases (RDB). A few examinations show, that social and NoSQL data bases are even in some sense correlative [5]. The decision of innovation is basic for applications that can be both value-based and scientific. They commonly require diverse programming and equipment designs. Presently, in current Big Data applications, particularly where broad examinations are required, things being what they are, it is non-trifling to plan a framework including data and programming of the two kinds. A specific instance of mix of social and NoSQL data bases concerns diagram data bases. One propensity is to utilize staggered displaying approaches including both social and NoSQL models including their mix [7], [6]. model had some important features that RDBMSs do not have or enable to do only with a high effort. A well-known example shows directed graphs implemented using relations. Some typical graph tasks, such as finding a path from node A to node B, require many join operations or complex recursive queries in SQL. On the other hand, in native graph query tools, these tasks are specified in a more simple way and with more effective implementation. The interest in graph databases is continuously growing because of its ability to analyze the data in non-relational format (e.g., social networks). Obviously, transactional data processing requires rather a relational database and classical querying guaranteed by SQL.

A *graph database* (GDB) is based on graph theory. It uses nodes, properties, and (directed) edges [8]. A node represents an entity, such as a User, Movie, Object, and an edge represents the relationship between two nodes, e.g., *is_friend_of*, *who_buys_what*, etc. Labelled nodes and edges may have various properties (attributes) given by key-value pairs attached to them. There may be more edges between two nodes. The *property (attribute) graph* is then a multigraph. A GDB can be either one graph or a collection of property graphs. In practice, we can find also more semantically enriched data structures, so-called triplestores¹. Here we suppose GDB represented by one property graph. Similarly to traditional databases, we use the notion of *graph database management system* (GDBMS). GDBMSs proved to be very effective and suitable for many data handling use cases. Graph querying is a key issue in any graph-based applications.

Today, NoSQL databases are considered in contrast to traditional RDBMSs products. On the other hand, yet other approaches are possible, e.g., a functional approach. In the late 80s, there was the functional language DAPLEX [9]. In

18th September 2020

Organized by

Department of Computer Science, Parvathy's Arts and Science College, Dindigul, Tamilnadu, India

the current era of GDBMSs, we can mention Gremlin² - a functional graph query language developed by Apache TinkerPop which allows to express complex graph traversals and mutation operations over property graphs. Traversal operators/functions are chained together to form path-like expressions. Gremlin is supported by many GDBMSs (e.g., Titan³). A number of significant works using functional approach to data management are contained in [10].

We will use a functional approach in which a property graph is represented by typed partial functions. We are inspired by the HIT Database Model, see, e.g., [11], as a functional alternative variant of E-R model. The functions considered will be of two kinds: single- valued and multivalued. Then, a typed lambda calculus, i.e., the language of lambda terms, can be used as a data manipulation language. Regardless of the fact that the graphs are considered schema-less in NoSQL databases, we will use graph database schemas.

The main aim of the paper is to introduce a functional approach to modelling both relations and property fuzzy graphs. The relations will be also considered as typed functions. Then some possibilities to integration on the level of a common query language are presented and discussed. For some real references to fuzzy graph querying in today's practice, we will consider FGDBMS Neo4j [12] and its popular query language Cypher⁴. For SQL relational databases, of course, we will assume SQL. The text follows the work of Pokorny [13].

The rest of the paper is organized as follows. We introduce basic notions of FGDBs and summarize some works related to integration of relational and NoSQL databases.

VII. CONCLUSION

This present reality is luxuriously interconnected, and graph data bases plan to emulate those occasionally predictable, now and then unpredictable connections in an instinctive manner. That is the thing that makes the graph worldview not the same as other data base models: It maps all the more practically to how the human cerebrum guides and cycles it's general surroundings.

Furthermore, when you begin seeing diagrams of interconnected data in one spot (your suggestion motor, for instance), you begin seeing them in different places as well (like your extortion location endeavors or your lord data the executives). Really soon, you'll have the revelation: graphs are all over.

It does not shock anyone then that diagram innovation is on the ascent (yet you don't need to believe me).

There's a good chance your competitors are at least evaluating or exploring the deployment of a graph database, so this is your opportunity to step up your game and join leading companies like

- Walmart (recommendation engine)
- eBay (artificial intelligence)
- Pitney Bowes (master data)
- NASA (knowledge graph)

Other Fortune 500 financial services customers (fraud detection) That said, it's a narrow window.

Learn to leverage graph databases today and your business retains the competitive advantage well past tomorrow.

REFERENCES

- [1] Yoon, Byoung-Ha; Kim, Seon-Kyu; Kim, Seon-Young (March 2017). "Use of Graph Database for the Integration of Heterogeneous Biological Data". *Genomics & Informatics*. 15 (1): 19–27. doi:10.5808/GI.2017.15.1.19. ISSN 1598-866X. PMC 5389944. PMID 28416946.
- [2] Silberschatz, Avi (28 January 2010). *Database System Concepts, Sixth Edition* (PDF). McGraw-Hill. p. D-29. ISBN 978-0-07-352332-3
- [3] "Graph Databases Burst into the Mainstream". www.kdnuggets.com. Retrieved 2018-10-23.
- [4] Tivari, S.: *Professional NoSQL*, Wiley/Wrox, 2015.



18th September 2020

Organized by

Department of Computer Science, Parvathy's Arts and Science College, Dindigul, Tamilnadu, India

- [5] [5].Meijer, E., Bierman, G.M., A co-relational model of data for large shared data banks. Commun. ACM 54(4), 2011, 49-58.
- [6] Pokorný J., Integration of Relational and NoSQL Databases, in: N. T. Nguyen, et al (eds), ACIIDS (2), LNCS, vol. 10752, Springer, 2018, 35-45.
- [7] Gašpar D., Coric I., Bridging Relational and NoSQL Databases, IGI Global, 2017.
- [8] Robinson, I., Webber J., Eiffrém E., Graph Databases, O'Reilly Media, 2013.
- [9] Shipman D.W., The functional data model and the data languages DAPLEX. ACM Transactions on Database Systems (TODS), 6, 1, 1981, 140-173.
- [10] Gray P.M.D., Kerschberg L., King P.J.H., Poulouvasilje A. (Eds.) The Functional Approach to Data Management, Modeling, Analyzing and Integrating Heterogeneous Data, Springer, Berlin, 2004.
- [11] Pokorný J., A function: unifying mechanism for entity-oriented database models, in: C. Batini, (Ed.), Entity-Relationship Approach, Elsevier Science Publishers B.V., North- Holland, 1989, 165-181.
- [12] Pokorný, J., Integration of Relational and Graph Databases Functionally. CoRR abs/1809.03822, 2018.
- [13] Robinson, I., Webber J., Eiffrém E., Graph Databases, O'Reilly Media, 2013.
- [14] Bhattacharya, P., Some Remarks on Fuzzy Graphs, Pattern Recognition Lett. 6(1987) 297- 302.
- [15] Bhutani, K.R., On Automorphism of fuzzy Graphs, Pattern Recognition Letters 12:413-420, 1991.
- [16] Frank Harary, Graph Thoery, Narosa /Addison Wesley, Indian Student Edition, 1988.
- [17] John N. Mordeson and Premchand S.Nair, Fuzzy Graphs and Fuzzy Hypergrphs, Physica-verlag, Heidelberg 2000.
- [18] Nagoor Gani, A., and Basheer Ahamed, M., Order and Size in Fuzzy Graph, Bulletin of Pure and Applied Sciences, Vol.22E (No.1) 2003, 145-148.
- [19] Rosenfeld, A., Fuzzy Graphs, In: L.A.Zadeh, K.S.Fu, M.Shimura, Eds., Fuzzy Sets and Their Applications, Academic Press (1975), 77-95.
- [20] Sunitha,M.S., and Vijayakumar, A.A., Characterization of Fuzzy Trees, Data Sciences, 113(1999), 293-300.