

# Air Quality Prediction by Given Attribute Based on Supervised with Classification Machine Learning Approach

M.Mahendran<sup>1</sup>, K.Prasad<sup>2</sup>, G.H.Krishna Kumar<sup>3</sup>, R.Naveen Kumar<sup>4</sup>

Assistant Professor, Dept. of CSE, Panimalar Engineering College, Tamil Nadu, India<sup>1</sup>

UG Student, Dept. of CSE, Panimalar Engineering College, Tamil Nadu, India<sup>2,3,4</sup>

**ABSTRACT:** Generally, Air pollution refers to the release of pollutants into the air that are detrimental to human health and the planet as a whole. It can be described as one of the most dangerous threats that the humanity ever faced. It causes damage to animals, crops, forests etc. To prevent this problem in transport sectors have to predict air quality from pollutants using machine learning techniques. Hence, air quality evaluation and prediction has become an important research area. The aim is to investigate machine learning based techniques for air quality forecasting by prediction results in best accuracy. The analysis of dataset by supervised machine learning technique(SMLT) to capture several information's like, variable identification, uni-variate analysis, bi-variate and multi-variate analysis, missing value treatments and analyze the data validation, data cleaning/preparing and data visualization will be done on the entire given dataset. Our analysis provides a comprehensive guide to sensitivity analysis of model parameters with regard to performance in prediction of air quality pollution by accuracy calculation. To propose a machine learning-based method to accurately predict the Air Quality Index value by prediction results in the form of best accuracy from comparing supervise classification machine learning algorithms. Additionally, to compare and discuss the performance of various machine learning algorithms from the given transport traffic department dataset with evaluation of GUI based user interface air quality prediction by attributes.

**KEYWORDS:** dataset, Machine learning-Classification method, python, GUI results.

## I. INTRODUCTION

Machine learning is to predict the future from past data. Machine learning (ML) is a type of artificial intelligence (AI) that provides computers with the ability to learn without being explicitly programmed. Machine learning focuses on the development of Computer Programs that can change when exposed to new data and the basics of Machine Learning, implementation of a simple machine learning algorithm using python. Process of training and prediction involves use of specialized algorithms. It feed the training data to an algorithm, and the algorithm uses this training data to give predictions on a new test data. Machine learning can be roughly separated in to three categories. There are supervised learning, unsupervised learning and reinforcement learning. Supervised learning program is both given the input data and the corresponding labelling to learn data has to be labelled by a human being beforehand. Unsupervised learning is no labels. It provided to the learning algorithm. This algorithm has to figure out the clustering of the input data. Finally, Reinforcement learning dynamically interacts with its environment and it receives positive or negative feedback to improve its performance. Data scientists use many different kinds of machine learning algorithms to discover patterns in python that lead to actionable insights. At a high level, these different algorithms can be classified into two groups based on the way they "learn" about data to make predictions: supervised and unsupervised learning. Classification is the process of predicting the class of given data points. Classes are sometimes called as targets/ labels or categories.

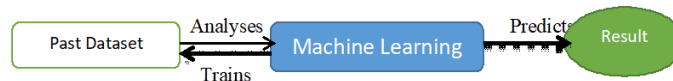
# International Journal of Innovative Research in Science, Engineering and Technology

(A High Impact Factor, Monthly, Peer Reviewed Journal)

Visit: [www.ijirset.com](http://www.ijirset.com)

Vol. 9, Issue 3, March 2020

Classification predictive modeling is the task of approximating a mapping function from input variables(X) to discrete output variables(y). In machine learning and statistics, classification is a supervised learning approach in which the computer program learns from the data input given to it and then uses this learning to classify new observation. This data set may simply bebi-class (like identifying whether the person is male or female or that the mail is spam or non-spam) or it may be multi-class too. Some examples of classification problems are: speechrecognition, handwriting recognition, bio metric identification, document classification etc.



*Fig1: Process of Machine learning*

Supervised Machine Learning **is the** majority of practical machine learning uses supervised learning. Supervised learning is where have input variables (X) and an output variable (y) and use an algorithm to learn the mapping function from the input to the output **is  $y = f(X)$** . The goal is to approximate the mapping function so well that when you have new input data (X) that you can predict the output variables (y) for that data. Techniques of Supervised Machine Learning algorithms include **logistic regression, multi-class classification, Decision Trees and support vector machines etc.** Supervised learning requires that the data used to train the algorithm is already labeled with correct answers. Supervised learning problems can be further grouped into **Classification** problems. This problem has as goal the construction of a succinct model that can predict the value of the dependent attribute from the attribute variables. The difference between the two tasks is the fact that the dependent attribute is numerical for categorical for classification. A classification model attempts to draw some conclusion from observed values. Given one or more inputs a classification model will try to predict the value of one or more outcomes. A classification problem is when the output variable is a category, such as “red” or “blue”.

Air pollution refers to the release of pollutants into the air that are detrimental to human health and the planet as a whole. It can be described as one of the most dangerous threats that the humanity ever faced. It causes damage to animals, crops and forests. It also contributes to the depletion of the ozone layer, which protects the Earth from the sun's UV rays. Some of the other environmental effects of air pollution are haze, eutrophication, and global climate changes. Most air pollution comes from energy use and production. Burning fossil fuels releases gases and chemicals into the air. And in an especially destructive feedback loop, air pollution not only contributes to climate change but is also exacerbated by it. Air pollution in the form of carbon dioxide and methane raises the earth's temperature. Another type of air pollution is then worsened by that increased heat: Smog forms when the weather is warmer and there's more ultraviolet radiation. Climate change also increases the production of allergenic air pollutants including mold (thanks to damp conditions caused by extreme weather and increased flooding) and pollen (due to a longer pollen season and more pollen production). Air pollution can be defined as an alteration of air quality that can be characterized by measurements of chemical, biological or physical pollutants in the air. Therefore, air pollution means the undesirable presence of impurities or the abnormal rise in the proportion of some constituents of the atmosphere. It can be classified in 2 sections: **visible** and **invisible** air pollution.

## II. PROBLEM DEFINITION

Monitoring and preserving air quality has become one of the most essential activities in many industrial and urban areas today. The quality of air is adversely affected due to various forms of pollution caused by transportation, electricity, fuel uses etc. The deposition of harmful gases is creating a serious threat for the quality of life in smart cities. With increasing

## International Journal of Innovative Research in Science, Engineering and Technology

(A High Impact Factor, Monthly, Peer Reviewed Journal)

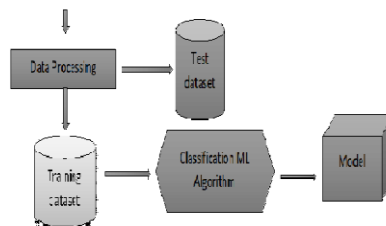
Visit: [www.ijirset.com](http://www.ijirset.com)

Vol. 9, Issue 3, March 2020

air pollution, we need to implement efficient air quality monitoring models which collect information about the concentration of air pollutants and provide assessment of air pollution in each area.

### III. PROPOSED SYSTEM ARCHITECTURE

While applying photo graphic based method is critical to evaluate parameters and it's taken data size is high. To overcome this method to implement machine learning approach by user interface of GUI application. Multiple datasets from different sources would be combined to form a generalized datasets, and then different machine learning algorithms would be applied to extract patterns and to obtain results with maximum accuracy.



*Fig3: Architecture of Proposed model*

#### WORKING PROCESS

- Variable Identification Process
- Exploration data analysis of visualization
- Outlier detection process
- Comparing Algorithm with prediction in the form of best accuracy result.
- GUI based user interface

#### PROCESS

- Download and install anaconda and get the most useful package for machine learning in Python.
- Load a dataset and understand its structure using statistical summaries and data visualization.
- machine learning models, pick the best and build confidence that the accuracy is reliable.

Python is a popular and powerful interpreted language. Unlike R, Python is a complete language and platform that you can use for both research and development and developing production systems. There are also a lot of modules and libraries to choose from, providing multiple ways to do each task. It can feel overwhelming.

The best way to get started using Python for machine learning is to complete a project.

It will force you to install and start the Python interpreter (at the very least).

It will give you a bird's eye view of how to step through a small project.

It will give you confidence, maybe to go on to your own small projects.

When you are applying machine learning to your own datasets, you are working on a project. A machine learning project may not be linear, but it has a number of well-known steps:

# International Journal of Innovative Research in Science, Engineering and Technology

(A High Impact Factor, Monthly, Peer Reviewed Journal)

Visit: [www.ijirset.com](http://www.ijirset.com)

Vol. 9, Issue 3, March 2020

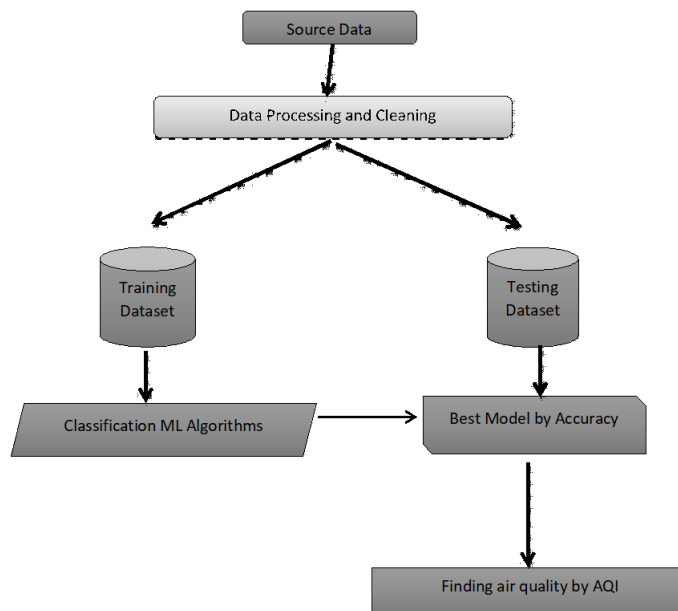
- Define Problem.
- Prepare Data.
- Evaluate Algorithms.
- Improve & Present Results

The best way to really come to terms with a new platform or tool is to work through a machine learning project end-to-end and cover the key steps. Namely, from loading data, summarizing data, evaluating algorithms and making some predictions.

Here is an overview of what we are going to cover:

1. Installing the Python anaconda platform.
2. Loading the dataset.
3. Summarizing the dataset.
4. Visualizing the dataset.
5. Evaluating some algorithms.
6. Making some predictions.

## Work flow diagram



## MODEL DESCRIPTION:

### **Variable Identification Process**

Validation techniques in machine learning are used to get the error rate of the Machine Learning (ML) model, which can be considered as close to the true error rate of the dataset. If the data volume is large enough to be representative of the population, you may not need the validation techniques. However, in real-world scenarios, to work with samples of data

## International Journal of Innovative Research in Science, Engineering and Technology

(A High Impact Factor, Monthly, Peer Reviewed Journal)

Visit: [www.ijirset.com](http://www.ijirset.com)

Vol. 9, Issue 3, March 2020

that may not be a true representative of the population of given dataset. To finding the missing value, duplicate value and description of data type whether it is float variable or integer. The sample of data used to provide an unbiased evaluation of a model fit on the training dataset while tuning model hyper parameters.

The evaluation becomes more biased as skill on the validation dataset is incorporated into the model configuration. The validation set is used to evaluate a given model, but this is for frequent evaluation. It as machine learning engineers use this data to fine-tune the model hyper parameters. Data collection, data analysis, and the process of addressing data content, quality, and structure can add up to a time-consuming to-do list. During the process of data identification, it helps to understand your data and its properties; this knowledge will help you choose which algorithm to use to build your model.

A number of different **data cleaning** tasks using Python's Pandas library and specifically, it focus on probably the biggest data cleaning task, **missing values** and it able to **more quickly clean data**. It wants to **spend less time cleaning data**, and more time exploring and modeling.

Some of these sources are just simple random mistakes. Other times, there can be a deeper reason why data is missing. It's important to understand these different types of missing data from a statistics point of view. The type of missing data will influence how to deal with filling in the missing values and to detect missing values, and do some basic imputation and detailed statistical approach for dealing with missing data. Before, joint into code, it's important to understand the sources of missing data. Here are some typical reasons why data is missing:

- User forgot to fill in a field.
- Data was lost while transferring manually from a legacy database.
- There was a programming error.
- Users chose not to fill out a field tied to their beliefs about how the results would be used or interpreted.

Variable identification with Uni-variate, Bi-variate and Multi-variate analysis:

- import libraries for access and functional purpose and read the given dataset
- General Properties of Analyzing the given dataset
- Display the given dataset in the form of data frame
- show columns
- shape of the data frame
- To describe the data frame
- Checking data type and information about dataset
- Checking for duplicate data
- Checking Missing values of data frame
- Checking unique values of data frame
- Checking count values of data frame
- Rename and drop the given data frame
- To specify the type of values
- To create extra columns

Data Validation/ Cleaning/Preparing Process

Importing the library packages with loading given dataset. To analysing the variable identification by data shape, data type and evaluating the missing values, duplicate values. A validation dataset is a sample of data held back from training your model that is used to give an estimate of model skill while tuning model's and procedures that you can use to make the best use of validation and test datasets when evaluating your models. Data cleaning / preparing by rename the given dataset and drop the column etc. to analyse the uni-variate, bi-variate and multi-variate process. The steps and techniques for data cleaning will vary from dataset to dataset. The primary goal of data cleaning is to detect and remove errors and anomalies to increase the value of data in analytics and decision making.

# International Journal of Innovative Research in Science, Engineering and Technology

(A High Impact Factor, Monthly, Peer Reviewed Journal)

Visit: [www.ijirset.com](http://www.ijirset.com)

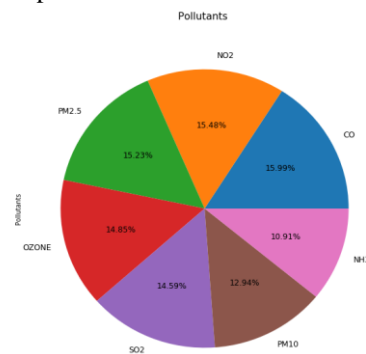
Vol. 9, Issue 3, March 2020

## Exploration data analysis of visualization

Data visualization is an important skill in applied statistics and machine learning. Statistics does indeed focus on quantitative descriptions and estimations of data. Data visualization provides an important suite of tools for gaining a qualitative understanding. This can be helpful when exploring and getting to know a dataset and can help with identifying patterns, corrupt data, outliers, and much more. With a little domain knowledge, data visualizations can be used to express and demonstrate key relationships in plots and charts that are more visceral and stakeholders than measures of association or significance. Data visualization and exploratory data analysis are whole fields themselves and it will recommend a deeper dive into some the books mentioned at the end.

Sometimes data does not make sense until it can look at in a visual form, such as with charts and plots. Being able to quickly visualize of data samples and others is an important skill both in applied statistics and in applied machine learning. It will discover the many types of plots that you will need to know when visualizing data in Python and how to use them to better understand your own data.

- How to chart time series data with line plots and categorical quantities with bar charts.
- How to summarize data distributions with histograms and box plots.
- How to summarize the relationship between variables with scatter plots.



*Fig. Percentage of each pollutant*

## Outlier detection process

Many machine learning algorithms are sensitive to the range and distribution of attribute values in the input data. Outliers in input data can skew and mislead the training process of machine learning algorithms resulting in longer training times, less accurate models and ultimately poorer results.

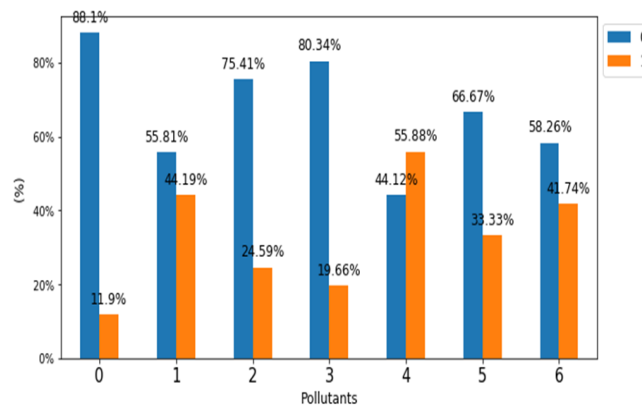
Even before predictive models are prepared on training data, outliers can result in misleading representations and in turn misleading interpretations of collected data. Outliers can skew the summary distribution of attribute values in descriptive statistics like mean and standard deviation and in plots such as histograms and scatterplots, compressing the body of the data. Finally, outliers can represent examples of data instances that are relevant to the problem such as anomalies in the case of fraud detection and computer security.

## International Journal of Innovative Research in Science, Engineering and Technology

(A High Impact Factor, Monthly, Peer Reviewed Journal)

Visit: [www.ijirset.com](http://www.ijirset.com)

Vol. 9, Issue 3, March 2020



*Fig Air quality Vs No air quality by pollutants*

It couldn't fit the model on the training data and can't say that the model will work accurately for the real data. For this, we must assure that our model got the correct patterns from the data, and it is not getting up too much noise.

Cross-validation is a technique in which we train our model using the subset of the data-set and then evaluate using the complementary subset of the data-set.

The three steps involved in cross-validation are as follows:

1. Reserve some portion of sample data-set.
2. Using the rest data-set train the model.
3. Test the model using the reserve portion of the data-set.

Advantages of train/test split:

1. This runs K times faster than Leave One Out cross-validation because K-fold cross-validation repeats the train/test split K-times.
2. Simpler to examine the detailed results of the testing process.

**Advantages of cross-validation:**

1. More accurate estimate of out-of-sample accuracy.
2. More "efficient" use of data as every observation is used for both training and testing.

Pre-processing refers to the transformations applied to our data before feeding it to the algorithm. Data Pre-processing is a technique that is used to convert the raw data into a clean data set. In other words, whenever the data is gathered from different sources it is collected in raw format which is not feasible for the analysis. To achieving better results from the applied model in Machine Learning method of the data has to be in a proper manner. Some specified Machine Learning model needs information in a specified format, for example, Random Forest algorithm does not support null values. Therefore, to execute random forest algorithm null values have to be managed from the original raw data set. And another aspect is that data set should be formatted in such a way that more than one Machine Learning and Deep Learning algorithms are executed in given dataset.

**False Positives (FP):** A person who will pay predicted as defaulter. When actual class is no and predicted class is yes. E.g. if actual class says this passenger did not survive but predicted class tells you that this passenger will survive.

**False Negatives (FN):** A person who default predicted as payer. When actual class is yes but predicted class in no. E.g. if actual class value indicates that this passenger survived and predicted class tells you that passenger will die.

## International Journal of Innovative Research in Science, Engineering and Technology

(A High Impact Factor, Monthly, Peer Reviewed Journal)

Visit: [www.ijirset.com](http://www.ijirset.com)

Vol. 9, Issue 3, March 2020

**True Positives (TP):** A person who will not pay predicted as defaulter. These are the correctly predicted positive values which means that the value of actual class is yes and the value of predicted class is also yes. E.g. if actual class value indicates that this passenger survived and predicted class tells you the same thing.

**True Negatives (TN):** A person who default predicted as payer. These are the correctly predicted negative values which means that the value of actual class is no and value of predicted class is also no. E.g. if actual class says this passenger did not survive and predicted class tells you the same thing.

### Comparing Algorithm with prediction in the form of best accuracy result

It is important to compare the performance of multiple different machine learning algorithms consistently and it will discover to create a test harness to compare multiple different machine learning algorithms in Python with scikit-learn. It can use this test harness as a template on your own machine learning problems and add more and different algorithms to compare. Each model will have different performance characteristics. Using resampling methods like cross validation, you can get an estimate for how accurate each model may be on unseen data. It needs to be able to use these estimates to choose one or two best models from the suite of models that you have created. When have a new dataset, it is a good idea to visualize the data using different techniques in order to look at the data from different perspectives. The same idea applies to model selection. You should use a number of different ways of looking at the estimated accuracy of your machine learning algorithms in order to choose the one or two to finalize. A way to do this is to use different visualization methods to show the average accuracy, variance and other properties of the distribution of model accuracies.

In the next section you will discover exactly how you can do that in Python with scikit-learn. The key to a fair comparison of machine learning algorithms is ensuring that each algorithm is evaluated in the same way on the same data and it can achieve this by forcing each algorithm to be evaluated on a consistent test harness.

In the example below 5 different algorithms are compared:

- Logistic Regression
- Random Forest
- K-Nearest Neighbors
- Decision tree
- Support Vector Machines(SVM)

The K-fold cross validation procedure is used to evaluate each algorithm, importantly configured with the same random seed to ensure that the same splits to the training data are performed and that each algorithm is evaluated in precisely the same way. Before that comparing algorithm, Building a Machine Learning Model using install Scikit-Learn libraries. In this library package have to done preprocessing, linear model with logistic regression method, cross validating by KFold method, ensemble with random forest method and tree with decision tree classifier. Additionally, splitting the train set and test set. To predicting the result by comparing accuracy.

### PREDICTION RESULT BY ACCURACY:

Logistic regression algorithm also uses a linear equation with independent predictors to predict a value. The predicted value can be anywhere between negative infinity to positive infinity. It need the output of the algorithm to be classified variable data. Higher accuracy predicting result is logistic regression model by comparing the best accuracy.

True Positive Rate(TPR) =  $TP / (TP + FN)$

False Positive rate(FPR) =  $FP / (FP + TN)$

**Accuracy:** The Proportion of the total number of predictions that is correct otherwise overall how often the model predicts correctly defaulters and non-defaulters.

#### Accuracy calculation:

Accuracy =  $(TP + TN) / (TP + TN + FP + FN)$



# International Journal of Innovative Research in Science, Engineering and Technology

(A High Impact Factor, Monthly, Peer Reviewed Journal)

Visit: [www.ijirset.com](http://www.ijirset.com)

Vol. 9, Issue 3, March 2020

Accuracy is the most intuitive performance measure and it is simply a ratio of correctly predicted observation to the total observations. One may think that, if we have high accuracy then our model is best. Yes, accuracy is a great measure but only when you have symmetric datasets where values of false positive and false negatives are almost same.

**Precision:** The proportion of positive predictions that are actually correct. (When the model predicts default: how often is correct?)

$$\text{Precision} = \text{TP} / (\text{TP} + \text{FP})$$

Precision is the ratio of correctly predicted positive observations to the total predicted positive observations. The question that this metric answer is of all passengers that labeled as survived, how many actually survived? High precision relates to the low false positive rate. We have got 0.788 precision which is pretty good.

**Recall:** The proportion of positive observed values correctly predicted. (The proportion of actual defaulters that the model will correctly predict)

$$\text{Recall} = \text{TP} / (\text{TP} + \text{FN})$$

Recall(Sensitivity) - Recall is the ratio of correctly predicted positive observations to the all observations in actual class - yes.

**F1 Score** is the weighted average of Precision and Recall. Therefore, this score takes both false positives and false negatives into account. Intuitively it is not as easy to understand as accuracy, but F1 is usually more useful than accuracy, especially if you have an uneven class distribution. Accuracy works best if false positives and false negatives have similar cost. If the cost of false positives and false negatives are very different, it's better to look at both Precision and Recall.

**General Formula:**

$$\text{F- Measure} = 2\text{TP} / (2\text{TP} + \text{FP} + \text{FN})$$

**F1-Score Formula:**

$$\text{F1 Score} = 2 * (\text{Recall} * \text{Precision}) / (\text{Recall} + \text{Precision})$$

## V. CONCLUSION

The analytical process started from data cleaning and processing, missing value, exploratory analysis and finally model building and evaluation. The best accuracy on public test set is higher accuracy score is will be find out. This application can help India meteorological department in predicting the future of air quality and its status and depends on that they can take action.

## REFERENCES

- [1] C. A. Pope, III, *et al.*, "Lung cancer, cardiopulmonary mortality, and long-term exposure to fine particulate air pollution," *J. Amer. Med. Assoc.*, vol. 287, no. 9, pp.1132–1141, 2002.
- [2] K. Gu, J. Qiao, and W. Lin, "Recurrent air quality predictor based on meteorology- and pollution-related factors," *IEEE Trans. Ind. Informat.*, vol. 14, no. 9, pp. 3946–3955, Sep. 2018.
- [3] G. Andria, G. Cavone, V. Di Lecce, and A. M. L. Lanzolla, "Model characterization in measurements of environmental pollutants via data correlation of sensor outputs," *IEEE Trans. Instrum. Meas.*, vol. 54, no.3, pp.1061–1066, Jun.2005.
- [4] Y. Chen, A. Ebenstein, M. Greenstone, and H. Li, "Evidence on the impact of sustained exposure to air pollution on life expectancy from China's HuaiRiver policy," *Proc. Nat. Acad. Sci. USA*, vol. 110, no. 32, p. 12936–12941, 2013.
- [5] Y. Zhao, S. Wang, L. Duan, Y. Lei, P. Cao, and J. Hao, "Primary air pollutant emissions of coal-fired power plants in China: Current status and future prediction," *Atmos. Environ.*, vol. 42, no. 36, pp. 8442–8452, 2008.
- [6] O. A. Postolache, J. M. D. Pereira, and P. M. B. S. Girao, "Smartsensors network for air quality monitoring applications," *IEEE Trans. Instrum. Meas.*, vol. 58, no. 9, pp. 3253–3262, Sep.2009.
- [7] F. A. Batzias and C. G. Siontorou, "Measuring uncertainty in lichen biomonitoring of atmospheric pollution: The case of SO<sub>2</sub>," *IEEE Trans.*

## International Journal of Innovative Research in Science, Engineering and Technology

(A High Impact Factor, Monthly, Peer Reviewed Journal)

Visit: [www.ijirset.com](http://www.ijirset.com)

Vol. 9, Issue 3, March 2020

*Instrum. Meas.*, vol. 58, no. 9, pp.Sep2009

- [8] Z. Geng, Q. Chen, Q. Xia, D. S. Kirschen, and C. Kang, "Environmental generation scheduling considering air pollution control technologies and weather effects," *IEEE Trans. Power Syst.*, vol. 32, no. 1, pp. 127–136, Jan.2017.
- [9] J. C. Chow, "Measurement methods to determine compliance with ambient air quality standards for suspended particles," *J. Air Waste Manage.Assoc.*,vol.45,no.5,pp.320–382,1995.
- [10] C. Zhang *et al.*, "Hybrid measurement of air quality as a mobile service: An image based approach," in *Proc. IEEE Int. Conf. Web Services (ICWS)*, Jun. 2017, pp.853–856.
- [11] W. Malm, K. Kelley, J. Molenaar, and T. Daniel, "Human perception of visual air quality," *J. Air Pollution Control Assoc.*, vol. 30, no. 2, pp. 122–131,1980.
- [12] G. Andria *et al.*, "Dosimetric characterization and image quality assessment in breast tomosynthesis," *IEEE Trans. Instrum. Meas.*, vol. 66, no.10,pp.2535–2544,Oct.2017.
- [13] G. Yue, C. Hou, T. Zhou, and X. Zhang, "Effective and efficient blind quality evaluator for contrast distorted images," *IEEE Trans. Instrum. Meas.*, to be published, doi:10.1109/TIM.2018.2868555.
- [14] G. Yue, C. Hou, K. Gu, T. Zhou, and G. Zhai, "Combining local and global measures for DIBR-synthesized image quality evaluation," *IEEE Trans. Image Process.*, vol. 28, no. 4, pp. 2075–2088, Apr.2019.
- [15] G. Yue, C. Hou, K. Gu, S. Mao, and W. Zhang, "Biologically inspired blind quality assessment of tone-mapped images," *IEEE Trans. Ind. Electron.*, vol. 65, no. 3, pp. 2525–2536, Mar.2018.
- [16] A. De Angelis, A. Moschitta, F. Russo, and P. Carbone, "A vector approach for image quality assessment and some metrological considerations," *IEEE Trans. Instrum. Meas.*, vol. 58, no. 1, pp. 14–25, Jan.2009.
- [17] G. Yue, C. Hou, K. Gu, N. Ling, and B. Li, "Analysis of structural characteristics for quality assessment of multiply distorted images," *IEEE Trans. Multimedia*, vol. 20, no. 10, pp. 2722–2732, Oct.2018.
- [18] B. Li, G. Thomas, and D. Williams, "Detection of ice on power cables based on image texture features," *IEEE Trans. Instrum. Meas.*, vol. 67, no. 3, pp. 497–504, Mar. 2018.
- [19] H. Sellahewa and S. A. Jassim, "Image-quality-based adaptive face recognition," *IEEE Trans. Instrum. Meas.*, vol. 59, no. 4, pp. 805–813, Apr.2010.
- [20] G. Yue, C. Hou, J. Lei, Y. Fang, and W. Lin, "Optimal region selection for stereoscopic video subtitle insertion," *IEEE Trans. Circuits Syst. Video Technol.*, vol. 28, no. 11, pp. 3141–3153, Nov.2018.
- [21] S. Shirmohammadi and A. Ferrero, "Camera as the instrument: The rising trend of vision based measurement," *IEEE Instrum. Meas. Mag.*, vol.17,no.3,pp.41–47,Jun.2014.
- [22] H. Wang, X. Yuan, X. Wang, Y. Zhang, and Q. Dai, "Real-time air quality estimation based on color image processing," in *Proc. IEEE Vis. Commun. Image Process. Conf.*, Dec. 2014, pp. 326–329.
- [23] Y. Li, J. Huang, and J. Luo, "Using user generated online photos to estimate and monitor air pollution in major cities," in *Proc. 7th Int. Conf. Internet Multimedia Comput. Service*, 2015, p.79.
- [24] C. Liu, F. Tsow, Y. Zou, and N. Tao, "Particle pollution estimation based on image analysis," *PLoS ONE*, vol. 11, no. 2, p.e0145955, 2016.
- [25] H. Xu, J. Guo, Q. Liu, and L. Ye, "Fast imagedehazing using improved dark channel prior," in *Proc. IEEE Int. Conf. Inf. Sci. Technol.*, Mar. 2012, pp.663–667.