

## International Journal of Innovative Research in Science, Engineering and Technology

(A High Impact Factor, Monthly, Peer Reviewed Journal)

Visit: [www.ijirset.com](http://www.ijirset.com)

Vol. 9, Issue 3, March 2020

# The Methodology on Graphical Passwords Effects of Tolerance Secret Phrase, Image Decision, and OTP Login Security

Mr.P.Prakash<sup>[1]</sup>, M.Kowsalya<sup>[2]</sup>,N.Gayathri<sup>[3]</sup>, A.Jayaheera<sup>[4]</sup>, P.Kavitha<sup>[5]</sup>

Asst. Professor, Dept. of Computer Science & Engineering, Paavai College of Engineering, Namakkal,  
Tami Nadu, India<sup>[1]</sup>

Students, Dept. of Computer Science & Engineering, Paavai College of Engineering, Namakkal,  
Tamil Nadu, India<sup>[2,3,4,5]</sup>

**ABSTRACT :** Numerous security natives depend on hard scientific issues. Utilizing hard AI issues for security is rising as an energizing new worldview, however has been underexplored. Right now, present another security crude dependent on hard AI issues, in particular, a novel group of graphical secret key frameworks based over Puzzle innovation, which we call Puzzle as graphical passwords (CaPRP). CaPRP is both a Puzzle and a graphical secret key plan. CaPRP addresses various security issues out and out, for example, web-based speculating assaults, transfer assaults, and, whenever joined with double view advances, shoulder-surfing assaults. Strikingly, a CaPRP secret phrase can be discovered just probabilistically via programmed on the web. Speculating assaults regardless of whether the secret key is in the pursuit set. CaPRP additionally offers a novel way to deal with address the notable picture hotspot issue in well-known graphical secret key frameworks, for example, Pass Points, that frequently prompts powerless secret key decisions. CaPRP isn't a panacea, yet it offers sensible security and convenience and seems to fit well with some viable applications for improving on the web security.

**KEYWORDS:** CaPRP, AESAlgorithm,DoS, DDoS and OTP.

### I.PROBLEM STATEMENT

The Puzzle (Completely Automated Public Turing Test to differentiate Computers and Humans) is a framework, broadly is utilized on the web to maintain a strategic distance from different vindictive robots to mishandle the system assets.

### II.EXISTING SYSTEM

Security natives depend on hard numerical issues. Utilizing hard AI issues for security is rising as an energizing new worldview, however has been underexplored. A fundamental errand in security is to make cryptographic natives dependent on hard numerical issues that are computationally immovable.

#### 2.1 Disadvantages

- This worldview has made only a constrained progress as contrasted and the cryptographic natives dependent on hard math issues and their wide applications.

# International Journal of Innovative Research in Science, Engineering and Technology

(A High Impact Factor, Monthly, Peer Reviewed Journal)

Visit: [www.ijirset.com](http://www.ijirset.com)

Vol. 9, Issue 3, March 2020

- Utilizing hard AI (Artificial Intelligence) issues for security, at first proposed is an energizing new worldview. Under this worldview, the most eminent crude concocted is Puzzle, which recognizes human clients from PCs by exhibiting a test.

## III. PROPOSED SYSTEM

We present another security crude dependent on hard AI issues, to be specific, a novel group of graphical secret key frameworks based over Puzzle innovation, which we call Puzzle as graphical passwords (CaPRP). CaPRP is both a Puzzle and a graphical secret phrase plot. CaPRP addresses various security issues inside and out, for example, web-based speculating assaults, transfer assaults, and, whenever joined with double view innovations, shoulder-surfing assaults. Remarkably, a CaPRP secret key can be discovered just probabilistically via programmed internet speculating assaults regardless of whether the secret key is in the inquiry set. CaPRP likewise offers a novel way to deal with address the notable picture hotspot issue in well known graphical secret key frameworks, for example, Pass Points, that regularly prompts feeble secret key decisions. CaPRP isn't a panacea, yet it offers sensible security and ease of use and seems to fit well with some handy applications for improving on the web security. We present an excellent CaPRPs based on both content Puzzle and picture acknowledgment Puzzle. One of them is a book CaPRP wherein a secret phrase is an arrangement of characters like a content secret phrase, yet entered by tapping the correct character succession on CaPRP pictures. CaPRP offers assurance against online lexicon assaults on passwords, which have been for long time a significant security risk for different online administrations. This danger is across the board and considered as a top digital security chance. Protection against online lexicon assaults is a more unpretentious issue than it may show up.

### 3.1 Advantages

- It offers sensible security and ease of use and seems to fit well with some down to earth applications for improving on the web security.
- This danger is far reaching and considered as a top digital security chance. Guard against online lexicon assaults is a more inconspicuous issue than it may show up.
- Puzzle Login (top of Puzzle innovation Using scientific issues).
- Picture Puzzle Solving Using AES Algorithm.

## IV. RELATED WORK

### 4.1 Puzzle Login

The security and convenience issues in content-based Login And secret phrase plans have brought about the improvement of Puzzle secret word plots as a potential other option. We can picture the aggregate  $1+2+3+\dots+n$  as a triangle of character. Numbers which have such an example of character are called Triangle (or triangular) numbers, composed  $T(n)$ , the total of the whole numbers from 1 to  $n$  time Using Factorial base Login Puzzle Solving.

### 4.2 Captcha Selection

A CAPTCHA is a test that is utilized to isolate people and machines. CAPTCHA means "Totally Automated Turing test to distinguish Computers and Humans." It is ordinarily a picture test or a straightforward science issue which a human can peruse or explain, yet a PC can't. It is made to prevent PC programmers from utilizing a program to consequently set up several records, for example, email accounts. It is named after mathematician. Every individual is picked arbitrarily and altogether by some coincidence, to such an extent that every individual has a similar likelihood of being picked at any phase during the inspecting procedure, and every subset of  $n$  people has a similar likelihood of being picked for the example as some other subset of  $n$  people This procedure and method is known as straightforward arbitrary examining, and ought not be mistaken for methodical irregular testing. A basic irregular example is an unprejudiced looking over method.

# International Journal of Innovative Research in Science, Engineering and Technology

(A High Impact Factor, Monthly, Peer Reviewed Journal)

Visit: [www.ijirset.com](http://www.ijirset.com)

Vol. 9, Issue 3, March 2020

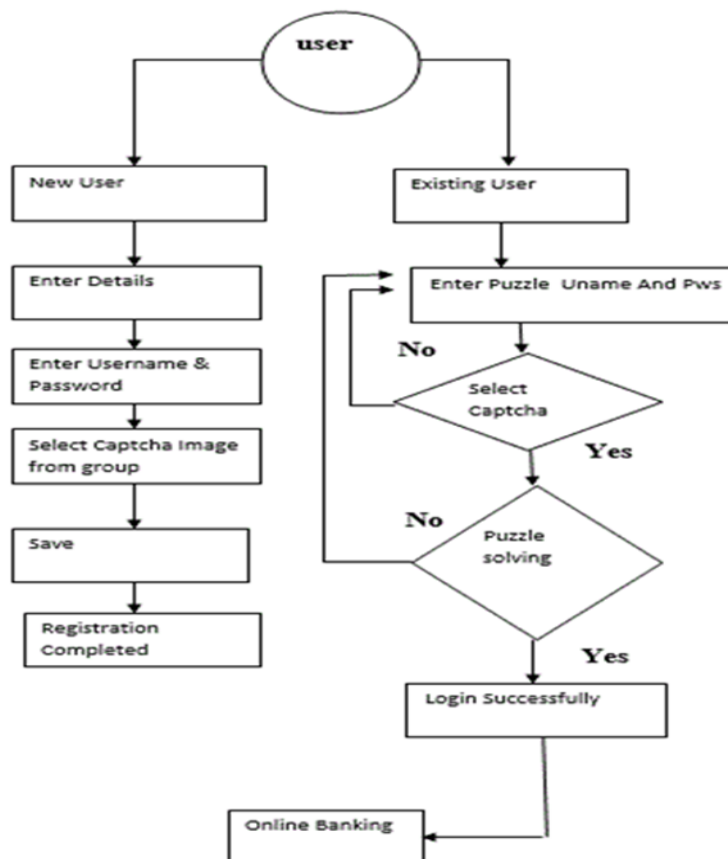
### 4.3 Puzzle Solving

We study how to forestall DoS/DDoS attackers from swelling their riddle illuminating abilities. To this end, we present another customer puzzle alluded to as programming puzzle. Not at all like the current customer puzzle plans, which distribute their riddle calculations ahead of time, a riddle calculation in the present programming puzzle plot is haphazardly produced simply after a customer demand is gotten at the server side and the calculation is created with the end goal that: 1) an aggressor can't set up a usage to comprehend the riddle ahead of time and 2) the assailant needs impressive exertion in interpreting a focal preparing unit puzzle programming to its practically proportional GPU form to such an extent that the interpretation is impossible progressively. In addition, we tell the best way to actualize programming puzzle in the nonexclusive server program model.

### 4.4 OTP Generation

A one-time secret phrase (OTP) is a secret phrase that is substantial for only one login meeting or exchange, on a PC framework or other advanced gadget. OTPs maintain a strategic distance from various deficiencies that are related with conventional (static) secret key based verification; various usage likewise join two factor confirmation by guaranteeing that the one-time secret phrase expects access to something an individual has, (for example, a little keyring dandy gadget with the OTP adding machine incorporated with it, or a smartcard or explicit cellphone) just as something an individual knows, (forexample , a PIN)

## V. SYSTEM ARCHITECTURE



# International Journal of Innovative Research in Science, Engineering and Technology

(A High Impact Factor, Monthly, Peer Reviewed Journal)

Visit: [www.ijirset.com](http://www.ijirset.com)

Vol. 9, Issue 3, March 2020

## VI. ADVANCED ENCRYPTION STANDARD (AES) ALGORITHM

The Advanced Encryption Standard (AES) is an encryption calculation for making sure about touchy however unclassified material by U.S. Government organizations and, as an imaginable result, may in the end become the accepted encryption standard for business exchanges in the private segment. (Encryption for the US military and other characterized interchanges is taken care of by isolated, mystery algorithms.) In January of 1997, a procedure was started by the National Institute of Standards and Technology (NIST), a unit of the U.S. Trade Department, to locate a progressively strong swap for the Data Encryption Standard (DES) and to a lesser degree Triple DES. The detail required a symmetric calculation (same key for encryption and unscrambling) utilizing square encryption (see square figure) of 128 bits in size, supporting key sizes of 128, 192 and 256 bits, as a base. The calculation was required to be without eminence for utilize worldwide and offer security of an adequate level to ensure information for the following 20 to 30 years. It was to be anything but difficult to actualize in equipment and programming, just as in confined situations (for instance, in a shrewd card) and offer great barriers against different assault techniques. The whole determination process was completely open to open investigation and remark, it being concluded that full perceivability would guarantee the most ideal examination of the plans. In 1998, the NIST chose 15 contender for the AES, which were then dependent upon primer investigation by the world cryptographic network, including the National Security Agency. Based on this, in August 1999, NIST chose five calculations for increasingly broad investigation. These were:

- MARS, put together by an enormous group from IBM Research
- RC6, presented by RSA Security
- Rijndael, presented by two Belgian cryptographers, Joan Daemen and Vincent Rijmen
- Serpent, presented by Ross Andersen, Eli Biham and Lars Knudsen
- Twofish, presented by a huge group of specialists including Counterpane's regarded cryptographer, Bruce Schneier

Usage of the entirety of the above were tried broadly in ANSI C and Java dialects for speed and unwavering quality in such measures as encryption and decoding rates, key and calculation set-up time and protection from different assaults, both in equipment and programming driven frameworks. By and by, nitty gritty investigation was given by the worldwide cryptographic network (counting a few groups attempting to break their own entries). The final product was that on October 2, 2000, NIST declared that Rijndael had been chosen as the proposed standard. On December 6, 2001, the Secretary of Commerce formally endorsed Federal Information Processing Standard (FIPS) 197, which determines that all delicate, unclassified reports will utilize Rijndael as the Advanced Encryption Standard. Also see cryptography, information recuperation specialist (DRA) RELATED GLOSSARY TERMS: RSA calculation (Rivest-Shamir-Adleman), information key, greynet (or graynet), spam mixed drink (or hostile to spam mixed drink), fingerscanning (unique finger impression scanning), munging, insider risk, confirmation server, barrier top to bottom, nonrepudiation

## VII. CONCLUSION

The product puzzle might be based upon an information puzzle, It can be coordinated with any current server-side information puzzle conspire, and effortlessly conveyed as the present customer puzzle plans do. CAPTHCHA is broadly examine field go about as web rectifier to make sure about web applications by observe human from bots. CAPTCHA displayed which will improve obstruction of math analytics CAPTCHA. By use, Boolean activities and articulations rather than trigonometric and differential capacity which will help in decrease the multifaceted nature of CAPTCHA and help to accomplish better ease of use and security when contrasted with math analytics CAPTCHA.

# International Journal of Innovative Research in Science, Engineering and Technology

*(A High Impact Factor, Monthly, Peer Reviewed Journal)*

Visit: [www.ijirset.com](http://www.ijirset.com)

**Vol. 9, Issue 3, March 2020**

Boolean CAPTCHA can be effectively use by instructed client. No need of specialized expertise, by utilizing scholarly brain to illuminate this CAPTCHA and help to lessen time multifaceted nature.

## REFERENCES

- [1] A. Adams and M. Sasse, "Users are not the enemy," Commun. ACM, vol. 42, pp. 40–46, 1999.
- [2] M. Adham, A. Azodi, Y. Desmedt, and I. Karaolis, "How to attack twofactor authentication internet banking," in Proc. 17th Int. Conf. Financial Cryptography, 2013, pp. 322–328.
- [3] ARTigo, <http://www.artigo.org/>.
- [4] F. Aloul, S. Zahidi, and W. El-Hajj, "Two factor authentication using mobile phones," Proc. Comput. Syst. Appl., 2009, pp. 641–644.
- [5] R. Biddle, S. Chiasson, and P. van Oorschot, "Graphical passwords: Learning from the first twelve years," ACM Comput. Surveys vol. 44, no. 4, p. 19, 2012.
- [6] G. E. Blonder, "Graphical passwords," U.S. Patent 5 559 961, 1996.
- [7] J. Bonneau, C. Herley, P. C. van Oorschot, and F. Stajano, "The quest to replace passwords: A framework for comparative evaluation of web authentication schemes," in Proc. IEEE Symp. Security Privacy, 2012, pp. 553–567.
- [8] S. Chiasson, R. Biddle, and P. van Oorschot, "Asecond look at the usability of click-based graphical passwords," in Proc. 3rd Symp. Usable Privacy Security, 2007, pp. 1–12.
- [9] S. Chiasson, P. C. van Oorschot, and R. Biddle, "Graphical password authentication using cued click points," in Proc. 12th Eur. Symp. Res. Comput. Security, 2007, pp. 359–374.