

# Design and Development of Software for the Microcontroller Based Automated Drip Irrigation System Using Soil Moisture, power and Bore Well Monitoring System

D.Vinodini<sup>1</sup>, S.Natarajan<sup>2</sup>, R.Preethi<sup>3</sup>, Sk.Shafia Begum<sup>4</sup>, K.Kothainayaki<sup>5</sup>

Assistant Professor, Department of Electrical and Electronics Engineering, Vel Tech, Chennai, Tamil Nadu, India<sup>1,2</sup>

UG Student, Department of Electrical and Electronics Engineering, Vel Tech, Chennai, Tamil Nadu, India<sup>3 to 5</sup>

**ABSTRACT:** Many areas of agricultural fields are effectively over or under irrigated due to spatial variability in water infiltration and runoff of rainfall and irrigation, crop water use and irrigation depth. Under-irrigated areas are subject to water stress, resulting in production loss, while over-irrigated areas suffer from plant disease and nutrient leaching. This research was developed for adaption of Indian farmers to facilitate high water use efficiency by replacing hardware components with software functions which allows farmers to apply the right amount of water at the right time. The developed sensor 8051 microcontroller is designed using keil  $\mu$ vision 3 software for maximum of four sensors present in each field and controls the water supply in the field to be irrigated using solenoid valve. The sensor present in each field stops the pump automatically through microcontroller when the field reached to its field capacity and the motor will be switched on automatically when soil moisture reaches 70% of field capacity. Microcontrollers then supply water to that particular field for which water requires, till the sensors are deactivated again. The experimental field with an area of 1330 sq m for sweet corn crop was selected for performance evaluation with three sub plots *i.e.*, flood method, single row and paired row drip method. Overall yield response and water use efficiency for sweet corn crop is highest in single row drip method with 7.93 t ha<sup>-1</sup> and 23.88 kg/ha-mm respectively. Water applied in drip irrigation system using soil moisture sensor was found to be 332 mm instead of 520 mm in flood method for sweet corn and 36% water saving was observed. The total cost of the microcontroller based soil moisture sensor was Rs. 3755 as compared to the Rs. 1 lakh worth commercial available automated system

## I.INTRODUCTION

Irrigation by help of freshwater resources in agricultural areas has a crucial importance. Because of highly increasing demand for freshwater, optimal usage of water resources has been provided with greater extent by automation technology and its apparatus such as solar power, drip irrigation, sensors and remote control (Mahir and Semih, 2011). Many of the commercially available sensors, valves and modules assembled for irrigation system networks are too complex and costly to be feasible for site specific management of fixed irrigation systems which are not adopted by the Indian farmers (Prasad *et al.*, 2012). The efficiency of various management decisions depends on accurate measurements, which in turn depends on the accuracy of the sensor. Therefore, appropriate low cost technology has to be developed to facilitate high water use efficiency. It's hardly possible that every farmer must possess the perfect knowledge about growing specifications of plants in case of water supply. So to help them we are making an attempt by introducing our project low cost microcontroller

# International Journal of Innovative Research in Science, Engineering and Technology

(A High Impact Factor, Monthly, Peer Reviewed Journal)

Visit: [www.ijirset.com](http://www.ijirset.com)

Vol. 9, Issue 3, March 2020

based automated drip irrigation system using soil moisture sensors. By using sensors in our work we will make them aware about changing conditions of moisture level according to weather in relation to changing conditions of soil moisture they will be able to schedule the proper timing for water supply. Automated irrigation systems can increase crop yields, save water usage, energy and labour costs as compared with manual systems (Mulas, 1986). Automated irrigation system also facilitates high frequency and low volume irrigation (Noble *et al.*, 1999). C.Nagarajan et al [9-11] the main aim of the research is to develop and to test a low cost equipped microcontroller for management of drip irrigation systems with soil moisture sensors. Such a system can be cost effective monitoring control systems for growers.

## II. MATERIALS AND METHODS MICROCONTROLLER 8051 UNIT

The microcontroller incorporates all the features that are found in microprocessor. The microcontroller has built in ROM, RAM, input output ports, serial port, timers, interrupts and clock circuit. A microcontroller is an entire computer manufactured on a single chip. The microcontroller detects the moisture level of the soil with the help of four sensors. A display unit is interfaced with the MCU for user information and displaying the condition of the field. MCU operates the motor as per the moisture level in the soil. The software developed in the „C“ language was incorporated into the microcontroller by using dumper.

Interfacing LCD to microcontroller. The LCD (Liquid Crystal Display) is used to display the status of the system. Software communication takes place between the controller of the LCD and the microcontroller.

## III. WORKING PRINCIPLE INVOLVED IN SOIL MOISTURE SENSOR

In this experiment, sensors will detect the soil moisture in the root zone depth (agricultural field) and supply water to the field when requires irrigation water. The developed sensor 8051 microcontroller based design which controls the water supply to the field using solenoid valves. The sensor present in the field, stops the pump automatically through microcontroller when the soil moisture of the field reached to field capacity. Once the field reaches to 70% of field capacity (8.47%), sensors sense the requirement of water in the field and send a signal to the microcontroller. Microcontrollers then supply water to that particular field for which water requires, till the sensors are deactivated again.

## IV. RESULTS AND DISCUSSIONS

Development of low cost microcontroller based soil moisture sensor. In the development of low cost microcontroller based soil moisture sensor, 5v DC power supply is needed for all electronic operations. Step down transformer, rectifier, voltage regulator, and filter circuit are required for generation of 5v DC power. The total cost of the microcontroller based soil moisture sensor was Rs. 3755 as compared to the Rs. 1 lakh worth commercial available automated system. The microcontroller based soil moisture sensor works on the circuit diagrams as shown in the Figure 2, 3, 4 and 5.

The deficiency of water in the field is sensed by the op-amp based sensor. Whenever there is need of water in the particular field, the high signal (“1”) appears on the output pin of the sensor of that particular field. The output pins of all the sensors are connected to the PORT 2 of microcontroller. The high signs 1 (logic 1) from the sensor is entertained by the microcontroller at a particular pin.

By knowing the position of the pin on which signal appears, the microcontroller switch ON the RELAY (i.e. Water pump) connected at PORT 0. Now water starts run into the required field by opening of solenoid valve. After completion of watering i.e. field soil moisture content reaches to the field capacity, the sensor sends low signal (logic 0) to microcontroller. When microcontroller receives this signal, it switches OFF the water pump. Now microcontroller starts sensing the signal at PORT 2. In developing the software included in the microcontroller program was planned for the maximum

# International Journal of Innovative Research in Science, Engineering and Technology

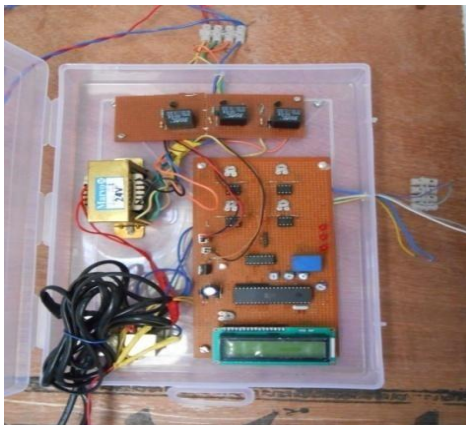
(A High Impact Factor, Monthly, Peer Reviewed Journal)

Visit: [www.ijirset.com](http://www.ijirset.com)

Vol. 9, Issue 3, March 2020

of four sensors. Like this process is continued and get the automatic irrigation to the fields by using intelligent device microcontroller 8051 in which source code is dumped. A microcontroller is used to control the operation along with relay switch and pump.

The AC (Alternate Current) voltage, typically 220V is connected to a transformer which steps that AC voltage down to the level of the desired DC (Direct Current) output. A diode rectifier provides a full wave rectified voltage that is initially filtered by a simple capacitor filter to produce a DC voltage. This resulting DC voltage usually has some ripple or AC voltage variation. A regulator circuit removes the ripples and maintains the same DC value even if the input DC voltage varies or the load connected to the output DC voltage changes as shown in Figure 6. This voltage regulation is usually obtained using one of the popular voltage regulator IC units. There is need of 5v DC power supply for all electronics involved in the project.



(a) Microcontroller based soilmoisture sensor



(b) Soil moisture aluminum probes

Fig.1 Soil moisture sensor with microcontroller

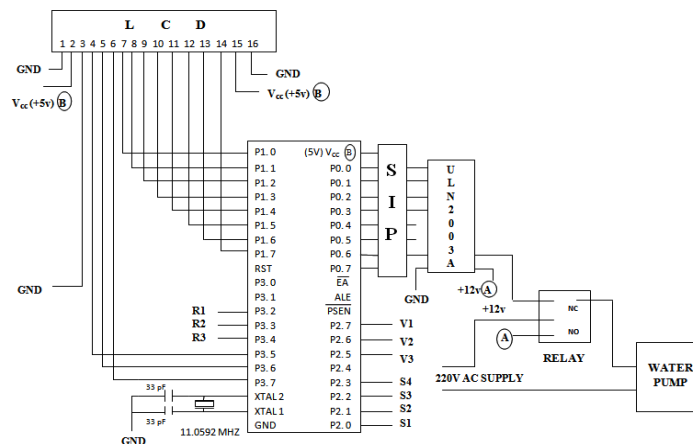


Fig.2 Microcontroller unit

# International Journal of Innovative Research in Science, Engineering and Technology

(A High Impact Factor, Monthly, Peer Reviewed Journal)

Visit: [www.ijirset.com](http://www.ijirset.com)

Vol. 9, Issue 3, March 2020

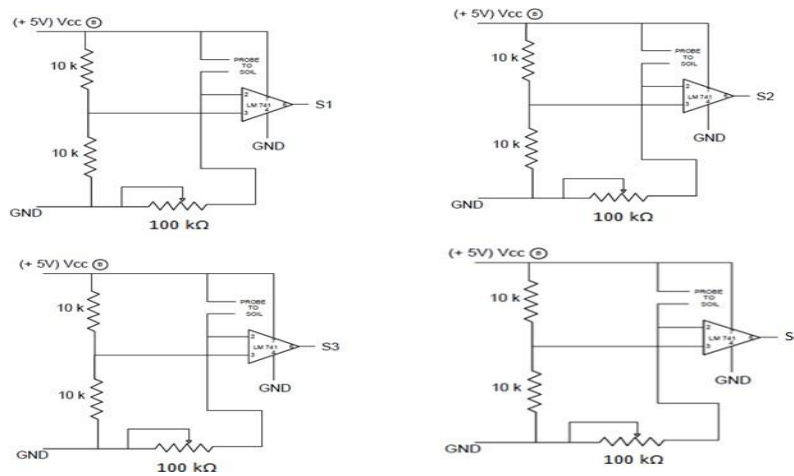


Fig.2 Sensor circuit diagrams

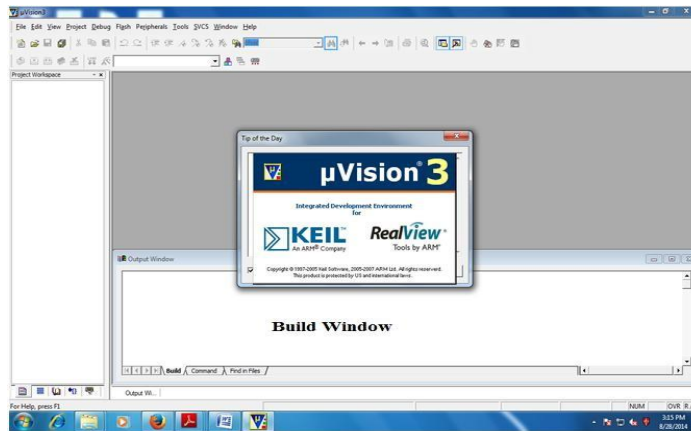


Fig.3 Main window of keil µvision 3

## International Journal of Innovative Research in Science, Engineering and Technology

(A High Impact Factor, Monthly, Peer Reviewed Journal)

Visit: [www.ijirset.com](http://www.ijirset.com)

Vol. 9, Issue 3, March 2020

Table.1  
Components list for the development of low cost microcontroller based Soil moisture sensor

Components	Specifications
Transformers (2 No's)	Step down transformer (220/12)
Voltage Regulator	IC 7805
Op-amp (4 No's)	LM741
Crystal oscillator	11.0592 M Hz
Diode	IN 4007
LED	Red (700 nanometers), 470 ohm (for LED), 10 K (for sensors), potentiometer(100K)
Resistor	1000 $\mu$ f (for Power supply)
Capacitor	33p F(for crystal oscillator)
LCD	16 x 2
Relay	220V/3-4A
Microcontroller	AT89S52
ULN	ULN 2003
Water pump	
Switches	
Power cables	
Connectors	
Solenoid Valves	
Aluminum Probes	

Table.2 Actual water applied for sweet corn crop in different irrigation systems

S.No.	Treatment	Water applied during sowing (mm)	Water applied during crop growth (mm)	Total water applied (mm)	% of water saving
1	Flood	50	470	520	-
2	Single row drip	50	282	332	36
3	Paired row drip	50	282	332	36

Table.3 Cob Characteristics for different irrigation treatments

Treatment	No. of kernel rows/cob	No. of kernels/cob	Cob diameter (cm)	Cob length (cm)	Individual fresh cob weight (g)
Flood irrigation	16.0	656.8	5.15	20.26	367.6
Single row drip	16.8	755.2	5.51	20.54	405.2
Paired row drip	14.8	558.8	3.824	18.80	226.6

# International Journal of Innovative Research in Science, Engineering and Technology

(A High Impact Factor, Monthly, Peer Reviewed Journal)

Visit: [www.ijirset.com](http://www.ijirset.com)

Vol. 9, Issue 3, March 2020

Table.4 Water use efficiency of the sweet corn under different levels of the irrigation

S.No	Treatments	Yield (kg ha <sup>-1</sup> )	Water applied (mm)	Water use efficiency (kg/ha-mm)
1	Flood irrigation	7429	520	14.29
2	Single row drip	7929	332	23.88
3	Paired row drip	6476	332	19.51

## V.CONCLUSION

The amount of water applied in flood irrigation system for sweet corn crop was based on CROPWAT data (470 mm) in addition to 50 mm water used at the time of sowing. Hence, totally 520 mm of water was used in flood method. Where as in drip method, water applied is based on the operation of automatic soil moisture sensor. When the soil is reached to field capacity the irrigation was automatically stopped and the system used to get started giving irrigation, when the soil moisture is reached to 70 % of field capacity. The authenticity of automation unit was cross checked by collecting soil samples near the moisture sensors and found the moisture content through gravimetric method for both the limits. The field capacity was found to be 8.47 % and hence sensor will switch off automatically at moisture content of 8.16 % and automatically switch on at moisture content of 5.8 %. It was found that water applied for sweet corn crop in alternative days in both methods of drip system at the initial stage and daily from the development stage to one week before harvesting. The amount of water applied measured regularly with the help of time-discharge relation and total water applied in different irrigation systems was presented in Table 2. It was observed that 332 mm of water applied in drip instead of 520 mm in flood method for sweet corn and 36 % water saved in drip method. And also yield response for the treatments, plant height, root depth and cob characteristics (Abdullah *et al.*, 2003) were recorded in all three treatments as shown in Table 3. It was found that water use efficiency is highest in single row drip method as 23.88 kg/ha-mm followed by paired row drip and flood method as 19.51 and 14.29 kg/ha-mm respectively as shown in Table 4. In paired row drip system, more water use efficiency observed than flood due to 36% water saving even though yield is less compared to flood method.

## REFERENCES

- [1] Abdullah, O., Mehmet, S and Gulgun, O.A. 2003. Deficit irrigation effects on sweet corn (*Zea mays saccharata*Sturt) with drip irrigation system in a semi-arid region I. Water-yield relationship. *Agricultural Water Management*.61:63-74.
- [2] Boaz, A. 2015. Water scarcity a threat for Agriculture. *Journal of Agriculture and Rural Development*. 42(5): 42-44.
- [3] Divya, V and Umamakewari, A. 2013. An intelligent irrigation system with voice commands and remote monitoring of field. *Journal of Artificial Intelligence*.6(1): 101-106.
- [4] Mahir, D. and Semih O. 2011. A wireless application of drip irrigation automation supported by soil moisture sensors. *Scientific Research and Essays*. 6(7): 1573-1582.
- [5] Mulas, P., 1986. Developments in the automation of irrigation. *ColtureProtette*. 15 (6), 17-19.
- [6] Noble, A., Hema, P.S., Saritha, E.K and Shinoj, S. 1999. Irrigation automation based on soil electrical conductivity and leaf temperature. *Agricultural Water Management*.45: 145-157.
- [7] Prasad, K.S.S., Nitesh, K., Sinha, N.K and Kumar, P.S. 2012. Water-saving irrigation system based on automatic control by using GSM technology. *Middle-East Journal of Scientific Research*.12(12):1824-1827.
- [8] Schreiber, H.A., Stanberry, C.O and Henry Tucker. 1962. Irrigation and nitrogen effects on sweet corns row numbers at various growth stages. *American Association for the Advancement of Science*.135(3509): 1135-1136.
- [9] C.Nagarajan and M.Madheswaran - 'Stability Analysis of Series Parallel Resonant Converter with Fuzzy Logic Controller Using State Space Techniques'- *Electric Power Components and Systems*, Vol.39 (8), pp.780-793, May 2011
- [10] E Geetha, C Nagarajan, "Induction Motor Fault Detection and Classification Using Current Signature Analysis Technique", 2018 Conference on Emerging Devices and Smart Systems (ICEDSS), 2<sup>nd</sup> and 3<sup>rd</sup> March 2018, organized by mahendra Engineering College, Mallasamudram, PP. 48-52,2018
- [11] C. Nagarajan, M.Madheswaran and D.Ramasubramanian- 'Development of DSP based Robust Control Method for General Resonant Converter Topologies using Transfer Function Model'- *Acta Electrotechnica et Informatica Journal* , Vol.13 (2), pp.18-31, April-June.2013