

Nature Based Post Analysis on Social Platforms: A Survey

Dipak Mathe¹, Prof.Pramod Talole²

U.G. Student, Department of Information Technology, Anuradha Engineering College, Chikhli, Buldana-443201, India¹

Assistant Professor, Department of Information Technology, Anuradha Engineering College, Chikhli, Buldana-443201, India²

ABSTRACT: Long range informal communication locales like twitter have a great many individuals share their musings step by step as chirps. As chirps trademark short and essential method of articulation. So in this audit paper we concentrated on assumption investigation of social media information. The Assumption Analysis sees as territory of content information mining and Natural Language Processing. The exploration of opinion investigation of social media information can be acted in various perspectives. This paper shows feeling investigation types and procedures used to perform extraction of opinion from chirps. The investigation is utilized to arrange the assumption as positive, negative, unbiased, emphatically positive, pitifully positive, solid negative, and feeble negative. In this study paper, we have taken similar investigation of various strategies and approaches of opinion examination having social media as an information.

KEYWORDS: Social Media, Information Mining, Twitter Dataset, Investigation.

I. INTRODUCTION

The informal communication destinations like Twitter, Facebook, and YouTube have gotten so much notoriety now days. The territory of assessment investigation is known as conclusion mining, it is under umbrella of computational semantics and information mining. Its primary point is to identify the individual's mind-set, conduct and sentiment from content archives. With the extended utilization of social organizing locales, feeling examination methods have begun to utilize these locales' open information to do feeling examination concentrates in distinctive sociological territories, for example, legislative issues, human science, economy and money. The greater part of the information that accessible in interpersonal organizations is unstructured. Such unstructured information is practically 80% of the information everywhere throughout the world. This makes it hard to break down and increase significant judgment from such information. Conclusion investigation or conclusion mining is the significant method, which help in identifying assessments of individuals via web-based networking media information. Assessments of others can be significant when it is have to settle on a choice. At the point when those choices include important assets individuals consider their allies' past encounters. Presently a day's online life gives new apparatuses to helpfully share thoughts with people groups connected to the World Wide Web. Despite the fact that assessment investigation focus on extremity location (positive, negative or unbiased). Social Media's is a miniaturized scale blogging website which contains huge number of short length uses for promoting, informal communication. For instance, ideological groups may be anxious to realize whether individuals bolster their educational program or not. In present situation the need to accumulate feelings from long range interpersonal communication destinations and draw ends that what individuals like or aversion, has been the most significant point of view. The target of this survey paper is to talk about idea of notion examination of social mediachirps.

II. LITERATURE REVIEW

A. OPINING MINING

Assessment mining alludes to the wide territory of normal language handling, content mining, computational semantics, which includes the computational investigation of notions, sentiments and feelings communicated in content. In spite of the fact that, see or on the other hand mentality dependent on feeling rather than reason is regularly informally alluded to as an assumption. Thus, loaning to a comparable for assessment mining or opinion examination, expressed that conclusion mining has numerous application spaces including bookkeeping, law, inquire about, diversion, instruction, innovation, legislative issues, and showcasing. In prior days numerous internet-based life have given web clients road for opening up to communicate and impart their contemplations and insights.

B. TWITTER

The point while performing twitter estimation examination is arranges the tweets in various estimation classes precisely. In this field of research, different strategies have developed, which think of techniques to prepare a model and afterward test it to check its viability. Performing conclusion investigation is testing on twitter tweets. Here we characterize a few reasons for this:

- Limited tweet size: with only 280 characters close by, diminished explanations are produced, which results scanty arrangement of highlights.
 - Use of slang: these words are not exactly equivalent to English words and it can make a methodology out dated due to the developmental utilization of slangs.
 - Twitter highlights: it allows the utilization of hash labels, client reference and URLs. These require distinctive preparing in correlation with different words.
 - User assortment: the clients express their suppositions in an alternate way, some utilizing diverse language in the middle of, while others utilizing rehased words or images to communicate their feeling.
- All the above issues are required to be looked in the pre-handling area.

C. YOUTUBE

To arrange the occasions as basic, high, medium, low or clamor is known as Event Classification. Occasions are named Standard or Special Events.

A strategy for example a book handling pipeline is utilized to discover an assortment for classes of video occasion consequently. For this, video titles and depiction are dissected and afterward WordNet is applied with the goal that classification might be chosen.

Clients can transfer their own recordings to YOUTUBE. There is a title and portrayal of every video and this title and depiction have some data about that video. Be that as it may, this data gave by title and depiction isn't adequate to comprehend the video substance. So, this data is called powerless mark data. To make it valuable data, first, structure of language utilized in titles and depiction must be clear. Besides a strategy ought to be created to channel classes with the goal that important classifications might be held. So as to take care of these issues "content handling pipeline" is created to channel classification marks of video occasions.

D. INTERNET BASED LIFE

Characterized a web-based life as a gathering of Internet-based applications that make on the ideological and innovative establishments of Web2.0 which is permitted to fabricate and trade of client produced substance. In a conversation of Web World Start, 16] distinguished that a pattern of web clients is expanding and proceeding to invest more energy with internet based life by the absolute time spent on cell phones and internet based life in the U.S.across PC expanded by 37percent to121billion minutes in 2012, contrasted with 88 billion minutes in 2011. Then again, organizations utilize interpersonal interaction locales to discover and speak with customers, business can be shown harm to efficiency brought about by social organizing. As online networking can be presented so effectively on people in general, it can hurt private data to spread out in the social world. Despite what might be expected, [1talked about that the advantages of taking an interest in web-based life have gone past essentially social sharing to fabricate association's notoriety and acquire vocation openings and money related salary. What's more, referenced that the internet-based life is additionally being utilized for commercial by organizations for advancements, experts for looking, enlisting, social learning on the web and electronic business. Electronic business or E-trade alludes to the buy and offer of products or administrations online which can by means of web-based life, such has Twitter which is advantageous because of its 24-hours accessibility, simplicity of client care and worldwide reach. Among the reasons of why business will in general utilize more internet-based life is for getting knowledge into shopper conduct inclinations, advertise knowledge and present a chance to find out about client audit and observations.

III. NATURE BASED ANALYSIS

The territory of study that deciphers individuals suppositions, against a specific subject, about any occasion and so forth in content mining it is known as assessment mining or slant examination. It produces a tremendous issue zone. There are likewise different names what's more, having various undertakings, e.g., conclusion investigation,

supposition extraction, supposition mining, assumption mining, influence investigation, subjectivity investigation, survey mining, and so forth

Levels of Analysis:

When all is said in done, assumption investigation is arranged into predominantly three unique levels:

A. Report Level Analysis:

This level characterizes that whether the total report gives a positive supposition or negative estimation. The archive is on single subject is thought of. Along these lines writings which involve similar learning can't be thought of under archive level.

B. SENTENCE LEVEL ANALYSIS:

The errand of this level is sentence by sentence and chooses if each sentence speaks to conclusion into negative, positive, or nonpartisan. Nonpartisan, if sentence doesn't give any conclusion implies it is nonpartisan. Sentence level examination is connected to subjectivity arrangement. That communicates real data from sentences that gives abstract perspective and sentiments. for example, great terrible terms.

C. SUBSTANCE/ASPECT LEVEL ANALYSIS:

Both the report and the sentence level examination don't discover people groups like and abhorrences. Substance/Aspect level gives all through examination. Element/Aspect level was prior called include level. The center errand of element level is to recognizable proof builds, angle level direct gives consideration at the feeling or estimation. It depends on the idea that a feeling lives of a demeanor and a goal of assessment.

IV. NATURE BASED ANALYSIS ON SOCIAL MEDIA DATA

The work flow for nature based analysis analysis is shown in Figure

The system consists of the four main modules: datacollection module, data processing module, classificationmodule and analysis of output.

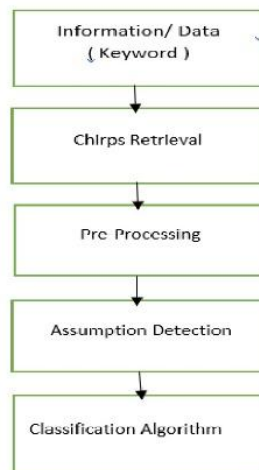


Fig.1: Nature Based Analysis Work Flow

1. Information (Keyword):

First beginning by picking a subject then we will gather the chirps with that catchphrase and perform slant investigation on those chirps.

2. ChirpsRetrieval:

Chirps can be an organized, semi-organized and unstructured sort. Assessment Analysis examine, we can gather chirpsutilizing distinctive programming dialects like R or python.

3. Pre-Processing:

Information pre-handling is only sifting the information to expel the deficient boisterous and conflicting information.

Following assignments are engaged with pre-preparing task:

- Removal of Rechirps
- Removing URLs, Special characters, Punctuations, Numbers and so on.
- Removing Stopwords
- Stemming
- Tokenization

4. Assumption Detection:

Assumption word ID is significant work in numerous uses of assessment investigation and supposition mining, for example, chirps mining, conclusion holder finding, and chirps order. Assessment words can be grouped into Positive, Negative and Neutral words. The key assignment in Nature Based Analysis is ordering the extremity of a given chirps highlight. The extremity is in three classes for example Positive, Negative and Neutral. Extremity distinguishing proof is finished by utilizing various vocabularies for example Bing Lui opinion vocabulary, SentiWordNet and so forth which help to ascertain slant quality, estimation score, and so forth.

5. Classification Algorithm:

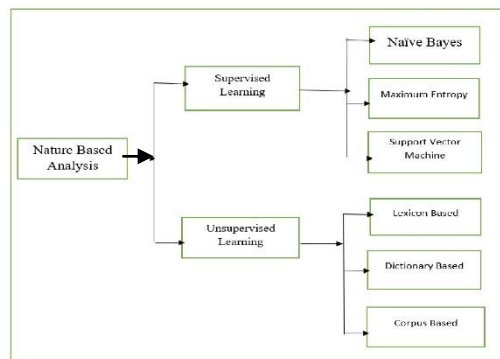


Fig2: Nature Based Analysis Algorithms

Two principal approaches are there in supposition investigation for example Administered Learning Approach and solo learning Approach. Opinion arrangement of twitter information is done utilizing directed AI approaches like Credulous Bayes, SVM, and Maximum-Entropy and so on. Proficiency of classifier is based whereupon dataset is utilized for which characterization techniques. On account of Supervised machine learning ways to deal with train the characterization model Training dataset is utilized which at that point help for arrangement of test information.

6. Investigation of Output: The central idea of opinion investigation is to change unstructured information into the critical or important information. After the finish of investigation, the outcomes are shown on chart like pie outline, bar diagram and line charts.

V. CONCLUSION

The examination of Social Media information is being done in various perspectives to mine the assessment or slant. This paper characterized the idea of estimation examination and feeling mining as for different degrees of slant examination. This review paper talked about various strategies of notion examination and strategy for supposition investigation. On the off chance that we are doing social assumption examination, it is important to think about the social media, about removing the chirps, its structure, and their hugeness. This paper gives brief thought of chirps. In this way the fundamental data required to do feeling examination of Social Media is all around talked about in this audit paper. The investigation of writing shows that, the exactness is improved when the semantic investigation WordNet is followed up by the AI strategies, as SVM, Naïve-Bayes furthermore, Maximum entropy. Additionally, the exactness can be expanded up to 4-5% utilizing the Hybrid methodology.

REFERENCES

[1] Kharche, S. R., and Lokesh Bijole. "Review on Sentiment Analysis of Twitter Data." International Journal of Computer Science and Applications 8 (2015).



- [2] Eliacik, Alpaslan Burak, and Erdoğan Erdoğan. "User-weighted sentiment analysis for financial community onTwitter." Innovations in Information Technology (IIT), 201511th International Conference on. IEEE, 2015.
- [3] Surnar, Avinash, and Sunil Sonawane. "Review for Twitter Sentiment Analysis Using Various Methods."
- [4] Fang, Xing, and Justin Zhan. "Sentiment analysis using product review data." Journal of Big Data 2.1 (2015): 5.
- [5] Jagdale, Rajkumar S., Vishal S. Shirsat, and Sachin N. Deshmukh. "Sentiment Analysis of Events from Twitter Using Open Source Tool." (2016).
- [6] Bahrainian, Seyed-Ali, and Andreas Dengel. "Sentiment analysis and summarization of twitter data." Computational Science and Engineering (CSE), 2013 IEEE 16th International Conference on. IEEE, 2013.
- [7] Aliza Sarlan, Chayanit Nadam, Shuib Basri. "Twitter Sentiment Analysis", 2014 International Conference on Information Technology and Multimedia (ICIMU), November 18 – 20, 2014, Putrajaya, Malaysia
- [8] Muhammad Zubair Asghar, Shakeel Ahmad, Afsana Marwat, Fazal Masud Kundi, Semtiment Analysis on Youtube: A Brief Survey, MAGNT Research Report (ISSN. 1444-8939) Vol.3 (1). PP: 1250-1257
- [9] Agarwal, Apoorv, et al. "Sentiment analysis of twitterdata." Proceedings of the workshop on languages in socialmedia. Association for Computational Linguistics, 2011.
- [10] Ko, Youngjoong, and Jungyun Seo. "Automatic text categorization by unsupervised learning." Proceedings of the18th conference on Computational linguistics-Volume 1. Association for Computational Linguistics, 2000.
- [11] Liu, Bing. "Sentiment analysis and opinion mining." Synthesislectures on human language technologies 5.1 (2012): 1-167.
- [12] Gautam, Geetika, and Divakar Yadav. "Sentiment analysis oftwitter data using machine learning approaches and semanticanalysis." Contemporary computing (IC3), 2014 seventhinternational conference on. IEEE, 2014.
- [13] Ko, Youngjoong, and Jungyun Seo. "Automatic text categorization by unsupervised learning." Proceedings of the18th conference on Computational linguistics-Volume 1. Association for Computational Linguistics, 2000.

BIOGRAPHY



Prof. Pramod Talole

Received the M.E. degree in Digital Electronics and the B.E. degree in Electronics and Telecommunication Engineering from Sant Gadge Baba Amravati University, Amravati. He is Assistant Professor with the Anuradha Engineering College, Chikhli, Dist. Buldana. M.S., India. His area of interest is Digital System Design, IoT and Machine Learning.



Mr. Dipak Mathe

Pursuing the B.E. degree in Information Technology from the Anuradha Engineering College, Chikhli, M.S. India in 2020. His area of interest is Python in Data Science and Machine Learning.