

Betel Plant Leaf Age and Disease Detection using K-mean Clustering

Indrajeet Kumar, Rahul Verma

M. Tech Scholar, Department of Electronics and Telecommunication Engineering, Central College of Engineering and Management, Raipur, India

Assistant Professor, Department of Electronics and Telecommunication Engineering, Central College of Engineering and Management, Raipur, India

ABSTRACT: This paper deal with the estimation of age and detection of disease of betel leaf based on the image processing. the leaf age having its complete lifecycle and have several bacterial, fungal infection so the identification of the plant leaf detection is the major thing for preventing the losses in the yield and quantity of the agricultural product. The monitoring of the plant infected with disease is quite difficult manually, so it required enormous amount of work, expertness in the plant disease and it also require an excessive processing time. in the absence of proper care causes serious effects on the lifecycle of the plant which is proportional to product quality, quantity or productivity. in the area of plant science and research the measurement of feature of plant is a fundamental element which is useful for its application in plant growth modeling agricultural research and on farm production. few of the traditional methods have been developed which are simple and reliable in nature but they are time consuming. So we can provide a better alternative, fast and accurate detection by using image processing techniques which can be more reliable than some other old or traditional methods. Through this paper we proposed a methodology for the analysis and detection of plant diseases using digital image processing techniques. This paper is divided into two parts. First is betel plant leaf age estimation for leaf maturity. Second is betel plant leaf disease detection for cure of bacterial infection.

KEYWORDS: Image Acquisition, Preprocessing, Features Extraction, Segmentation, K-Mean Clustering, Graph plot.

I. INTRODUCTION

India is well known for agricultural country wherein about 70% of the population depends on agriculture. Farmers have wide range of multiplicity to select suitable crops for their farm. However, the cultivation of these crops for optimum yield and quality produce is mostly technical which can be improved by the help of technological support. The management of perennial crops requires closer controlling especially for the management of diseases that may affect production significantly and afterward the post-harvest life of crops. The image processing is best technique used in agricultural applications for following purposes. First part is estimate the life age for better maturity. We can decide the production stage of our crop. Second part predict plant disease from image of plants. The existing method for plant disease detection is simply naked eye observation by experts through which identification and detection of plant diseases is taken in account. This process is tedious, time consuming. So There is need for designing a system that automatically recognizes, classifies and quantitatively detects plant disease symptoms. In case of plant disease the disease is known as any impairment of normal physiological function of plants which produce characteristics symptoms.

A symptom is a reality accompanying something and is observed as evidence of its existence. Mostly diseases are seen on the leaves on plants or stems of the plant. Hence to develop a computer vision system to detect, recognize and classify disease affected leaves comes in the era of current technology so Automatic detection of leaf diseases become the most important research topic as it may improve gain in monitoring large fields of crops and thus automatically detect the diseases from the symptoms that present on the plant leaves. The system provides an approach that facilitate Capture image, process it and get result through image processing.

II. METHODOLOGY

We have divided Methodology in two parts.

First part is leaf age estimation. It has following stages:

1. Image acquisition of betel leaf sample.
2. Line shape insert for petiole remove.
3. Resize of desire leaf image.
4. RGB to gray scale conversion by otsu's segmentation.
5. Binarization of image and remove noise.
6. Calculation of area and mean of color.
7. Graph is inserted using basic RGB conversion.

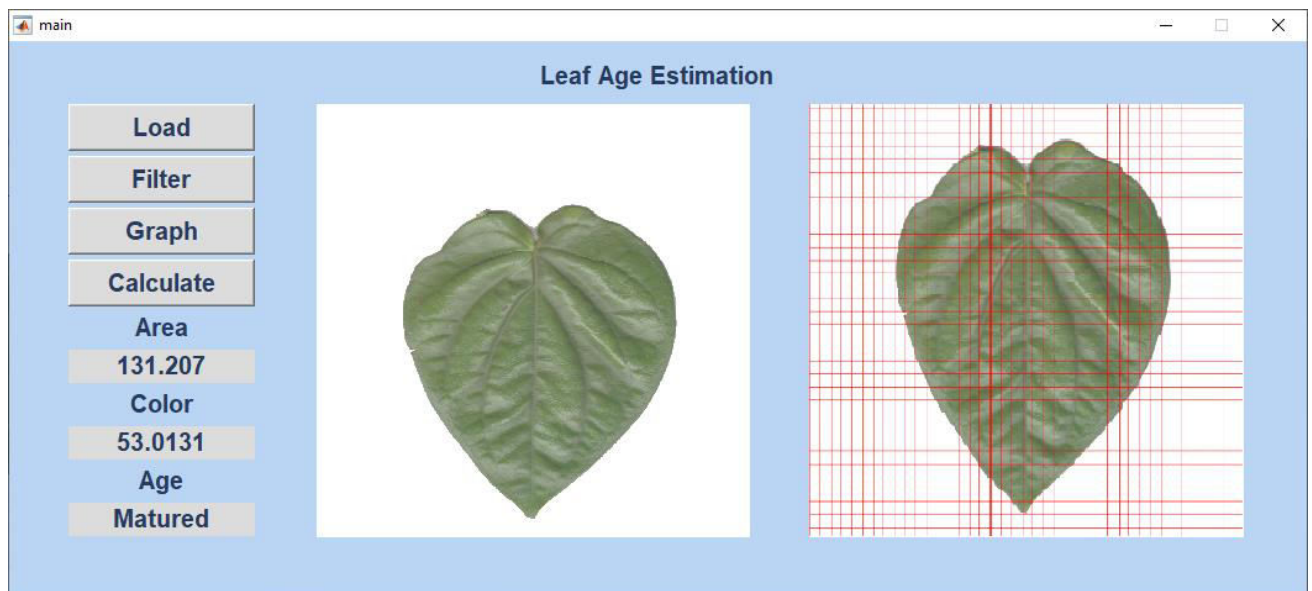


Fig1: GUI of Leaf Age Estimation

Second part is leaf disease classifier detection. It has following stages:

1. Image acquisition of betel leaf sample.
2. Filter of background portion using image subtraction.
3. Resize of desire leaf image.
4. RGB to gray scale conversion by Otsu's segmentation.
5. Apply K-mean clustering and got 10 clusters for deferent color group.
6. Select appropriate cluster for desired disease.
7. Apply selected cluster on original image and got infected area.
8. Calculation of number of rots and spots in infected image.

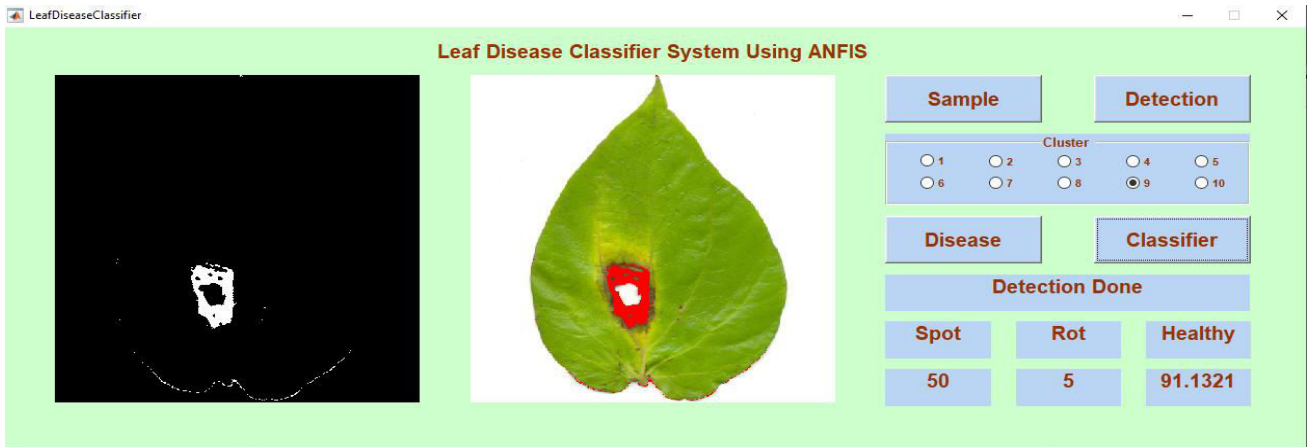


Fig2: GUI of Leaf Disease Classifier Using ANFIS

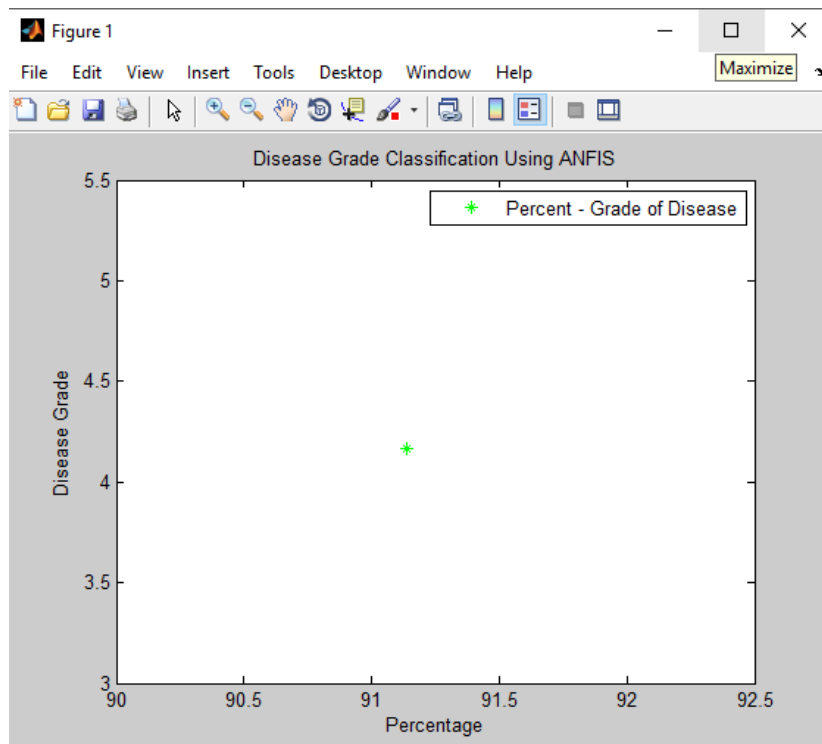


Fig3: Disease Grade Classification Using ANFIS

A. ImageAcquisition

Image acquisition is the process of collection of images and saving it to the database of the computer.

The betel leaf images either can be scene or can be taken images via a digital camera. The Totally 54 numbers of images are collected which includes both healthy and diseases affected betel leaves. The horizontal and vertical resolution of the images are 600dpi with bit depth 24 which produce the RGB digital colour image.

B. ImagePreprocessing

There are different preprocessing techniques are available for the removing noise from the image or object. Adaphisteq is the function that perform contrast limited adaptive histogram in which hasteq works on the entire image adapt his teq operates small regions in the image that is commonly called as tiles. Adaphisteq enhance the contrast to each tile so that the histogram of the output region approximately matches a specified histogram, after performing the equalization adaphisteq combines neighboring tiles using bilinear interpolation to eliminate artificially induced boundaries. To avoid amplifying any noise that might be present in the image, we can use



adapthisteq optional parameters to limit the contrast, especially in homogeneous areas.

When we convert an RGB image to grayscale, we have to take the RGB values for each pixel and make as output a single value reflecting the brightness of that pixel. One such kinds of approach is to take the average of the contribution from each channel of the colour: $(R+B+C)/3$, but the result of the output will not good However, since the perceived brightness is often dominated by the green component, a different, more "human-oriented", method is to take a weighted average.

$$X = 0.3R + 0.59G + 0.11B$$

C. FeaturesExtraction

In the proposed technique there are several types of feature extraction from the leaves namely entropy, standard deviation mean intensity and uniformity

D. Segmentation

for classification of object based on a set of features into K number of classes The K-means clustering is used.in which The classification of object is done by minimizing the sum of the squares of the distance between the object and the corresponding cluster. The algorithm for K –means Clustering:

- 1) Pick center of K cluster, either randomly or based on some heuristic.
- 2) Assigning each of the pixel in the image to the cluster that minimizes the distance between the pixel and the cluster center.
- 3) Again compute the cluster centers by averaging all of the pixels in the cluster. And Repeat steps 2, 3 until is convergence attained.

The objective function is:

$$J = \sum_{i=1}^m \sum_{k=1}^K w_{ik} \|x^i - \mu_k\|^2 \tag{1}$$

Where $w_{ik}=1$ for data point x_i if it belongs to cluster k ; otherwise, $w_{ik}=0$. Also, where μ_k is the centroid of x_i 's cluster.

It's a minimization problem of two parts. We first minimize J with respect to w_{ik} and treat μ_k as fixed. Then we minimize J with respect to μ_k and treat w_{ik} as fixed. Now We differentiate J with respect to w_{ik} first and update cluster assignments (E-step). Then we differentiate J with respect to μ_k and recomputed the centroids after the cluster assignments from previous step (M-step). Therefore, E-step is:

$$\begin{aligned} \frac{\partial J}{\partial w_{ik}} &= \sum_{i=1}^m \sum_{k=1}^K \|x^i - \mu_k\|^2 \\ \Rightarrow w_{ik} &= \begin{cases} 1 & \text{if } k = \operatorname{argmin}_j \|x^i - \mu_j\|^2 \\ 0 & \text{otherwise.} \end{cases} \end{aligned} \tag{2}$$

In another words, assign the data point x_i to the closest cluster judged by its sum of squared distance from cluster's centroid.

And M-step is:

$$\begin{aligned} \frac{\partial J}{\partial \mu_k} &= 2 \sum_{i=1}^m w_{ik} (x^i - \mu_k) = 0 \\ \Rightarrow \mu_k &= \frac{\sum_{i=1}^m w_{ik} x^i}{\sum_{i=1}^m w_{ik}} \end{aligned} \tag{3}$$

Which translates to re-computing the centroid of each cluster to reflect the new assignments.

III. RESULTS & DISCUSSION

Age estimation using area and color value have following sample and its result:

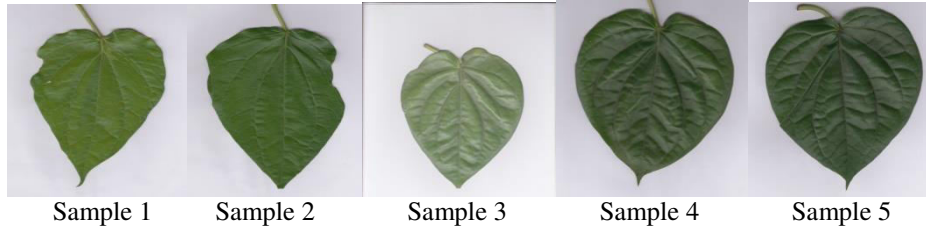


Fig 4 sample of betel leaf

Sample	Area	Color	Age
1	74.44	33.77	Startup
2	92.85	39.76	Growing
3	106.22	53.01	Established
4	109.77	30.92	Matured
5	115.77	29.27	Exit

Table number 1 output of the input sample

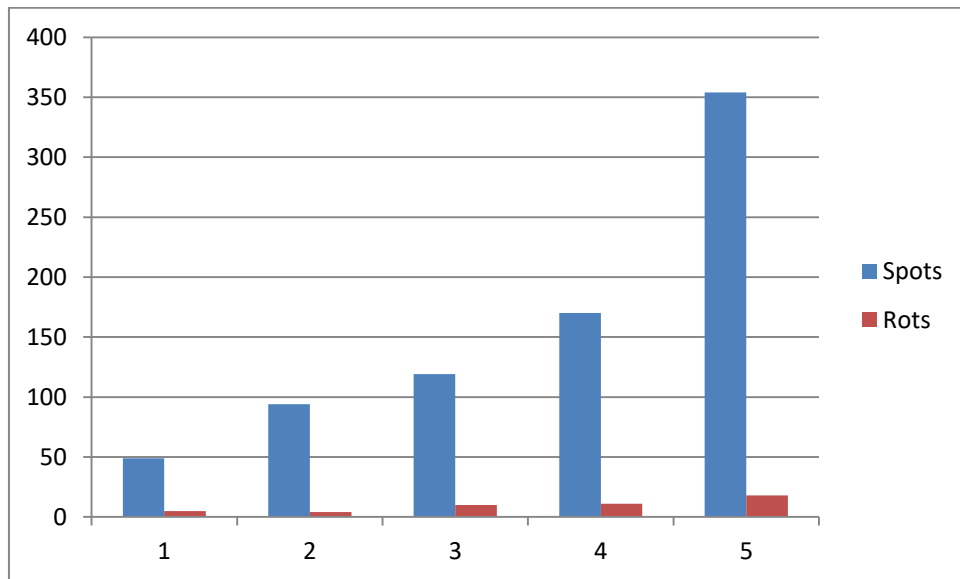


Fig:5 Area and color classification for Age estimation

We have five age estimation level for maturity of leaf. We have classified using area and color.

k-means clustering algorithm is most popular that's way proposed in this segmentation processes. Original image is given as the input to the segmentation process. In this algorithm K-means clustering transformation technique worked on the gradient of that image was employed to reduce the over segmentation of the K-means clustering algorithm. Number of spots, rots and healthy percentage of input sample as showing below.



Sample 1

Sample 2

Sample 3

Sample 4

Sample 5

Fig :6 sample of betel leaf

Sample	Spots	Rots	Percentage
1	49	5	91.14
2	94	4	93.00
3	119	10	90.67
4	170	11	82.98
5	354	18	96.85

Table number 2 output of the input sample

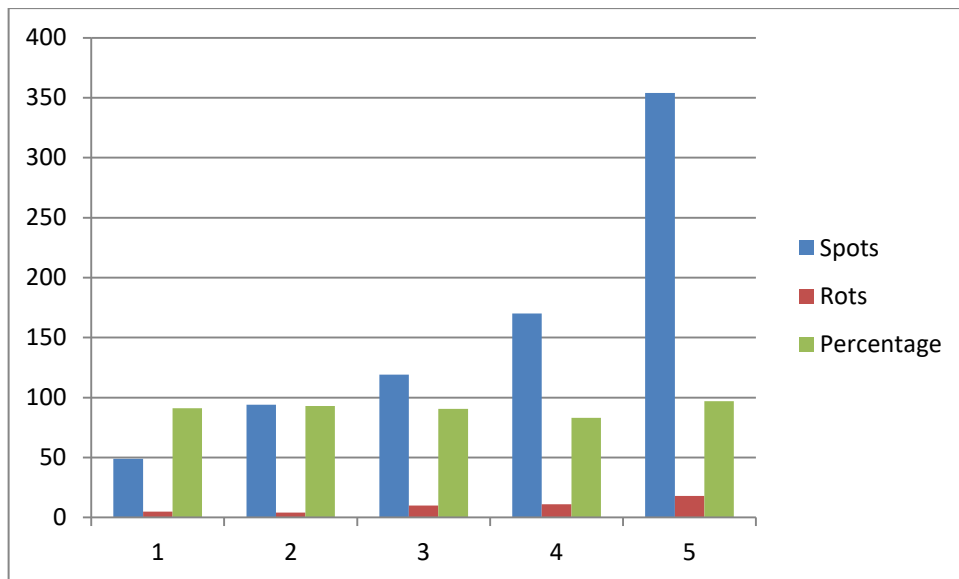


Fig5: Number of spots, rots and healthy percentage

IV. CONCLUSION

Main approach of our paper is to recognize age and diseases on the leaf. At first preprocessing is done which include area and color calculation. Second stage is feature extractions that include various features .Third stage is k-means based Image segmentationwhicheventuallydoesimageanalysis.Thegoal of this analysis work is to develop advance automatic data processingsystemwhichwilldeterminetheaffectedapartof a leaf spots by segmentation the image analysis technique. Through this projected system the farmers' burden has been reduced and saves their life,perform better than others. Accuracy of detection can be increased when using SVM classifier with more number of features included toit.

REFERENCES

- [1] AbiramiDevaraj, KarunyaRathan, SarvepalliJaahnavi and K Indira ‘Identification of Plant Disease using Image Processing Technique’ International Conference on Communication and Signal Processing, April 4-6, 2019, India 978-1-5386-7595-3/19/\$31.00 ©2019 IEEE.
- [2] Pooja v, rahul das and kachanav “identification of plant leaf disease using image processing techniques”2017 IEEE International Conference on Technological Innovations in ICT For Agriculture and Rural Development (TIAR 2017) 978-1-5090-4437-5/17/\$31.00 ©2017 IEEE.
- [3] Amar Kumar Dey, Manisha Sharma, and M.R.Meshram ‘Image Processing Based Leaf Rot Disease, Detection of Betel Vine (Piper BetleL.)’ International Conference on Computational Modeling and Security (CMS 2016) Procedia Computer Science 85 (2016) 748 – 754.
- [4] Chaitali G. Dhaware, Mrs. K.H. Wanjale “A Modern Approach for Plant Leaf Disease Classification which Depends on Leaf Image Processing” 2017 International Conference on Computer Communication and Informatics (ICCCI -2017), Jan. 05 – 07, 2017, Coimbatore.
- [5] R.MeenaPrakash, G.P.Saraswathy, G.Ramalakhshmi,” Detection of Leaf Diseases and Classification using Digital Image Processing” 2017 International Conference on Innovations in Information, Embedded and Communication Systems (ICIIECS) 978-1-5090-3294-5/17 IEEE.
- [6] Sandeep B. Patil,Santosh Kumar Sao,‘An improved leaf disease detection using collection of features and svm classifiers’InternationalJournalforResearchinAppliedScience&EngineeringTechnology(IJRASET),Volume 3, Issue VI, June 2015, IC Value: 13.98 ISSN: 2321- 9653.
- [7] Monika Jhuria, Ashwani Kumar, RushikeshBorse, Image Processing For Smart Farming: Detection of Disease and Fruit Grading, IEEE Proceedings of the 2013 IEEE Second International Conference on Image Information Processing, 2013,p.521-526.
- [8] Dheeb Al Bashish, Malik Braik and SuliemanBani- Ahmad “A Framework for Detection and Classification of Plant Leaf and Stem Diseases” IEEE International Conference on Signal and Image Processing, pp. 978-1- 4244-8594-9/10,2010.
- [9] Mr.J.Vijayakumar&Dr.S.Arumugam “ Early Detection of Powdery Mildew Disease for Betelvine Plants Using DigitalImageAnalysis”InternationalJournalofModern Engineering Research Vol.2, Issue.4, July-Aug 2012pp-2581-2583 ISSN: 2249-6645
- [10] SandeepB.Patil&Santosh Kumar Sao ,,”An Improved Leaf Disease Detection Using Collection of Features and Svm Classifiers”“.
- [11] Savita N. Ghaiwat, ParulArora “Detection and Classification of Plant Leaf Diseases Using Image processing Techniques: A Review”, International Journal of Recent Advances in Engineering &Technology,ISSN (Online): 2347 - 2812, Volume-2, Issue - 3, 2014
- [12] GhaiwatSavita N, AroraParul. Detection and classification of plant leaf diseases using image processing techniques: a review. Int J Recent AdvEngTechnol 2014; 2(3):2347–812. ISSN(Online).
- [13] AnupamaK,NutankumarS.Jane1,“ReviewofStudyof Different Diseases on Betel vine Plant and Control Measure”, IJAIEEM, Volume 3, Issue 3,2014.
- [14] Dhaygude Sanjay B, KumbharNitin P. Agricultural plantleafdiseasedetectionusingimageprocessing.IntJAdv Res Electr Electron InstrumEng 2013;2(1).
- [15] Mrunalini R Badnakhe, DeshmukhPrashant R. An application of K-means clustering and artificial intelligence in pattern recognition for crop diseases. IntConfAdvInfTechnol 2011; 20. 2011IPCSIT.