

Corona Treatment Testing Automation

Mrs. Shanthalakshmi¹, D. Lydia², S. Mohana laskhmi³, J. Mohanapriya⁴, R. Pavithra⁵

Professor, Department of ECE, Adhiyamaan College of Engineering, Hosur, Tamilnadu, India ¹

UG Students, Department of ECE, Adhiyamaan College of Engineering, Hosur, Tamilnadu, India ^{2,3,4,5}

ABSTRACT: The framework affirming the determinations and exhibitions of a Corona Treatment is a notable procedure utilized in the expulsion and changing over enterprises. Corona treater terminals, move covers and force supplies can be enhanced to address the difficulties of printing, covering, overlaying, blown film, and cast film applications. The following is a testing of regular applications where crown treatment is utilized to advance grip. Corona treated increment the surface vitality of movies, thwarts and paper to Improve wettability and attachment of connection, covering and glues This powerful earthenware cathodes and remarkable roll secured advance treatment levels and limit application issues for printing, covering and overlaying and its applications are utilized in printing, covering and overlaying, film expulsion, restricted web

KEYWORDS: Bare Roll Corona Treater, Coating, Power Supplies, LAB views

I. INTRODUCTION

Corona treatment (some of the time alluded to as air plasma) is a surface alteration method that utilizes a low-temperature corona release plasma to give changes in the properties of a surface. The corona plasma is produced by the utilization of high voltage to a cathode that has a sharp tip. The plasma structures at the tip. A straight cluster of anodes is frequently used to make a drape of corona plasma. Materials, for example, plastics, fabric, or paper might be gone through the corona plasma window ornament so as to change the surface vitality of the material. All materials have an innate surface vitality. Surface treatment frameworks are accessible for essentially any surface configuration including dimensional items, sheets and move products that are taken care of in a web position. Corona treatment is a generally utilized surface treatment technique in the plastic film, expulsion, and changing over enterprises. Corona Treatment is a well-known process used in the extrusion and converting industries. Corona treater electrodes, roll coverings and power supplies can be optimized to meet the challenges of printing, coating, laminating, blown film, and cast film applications. Below is a sampling of typical applications where corona treatment is used to promote adhesion. Treatment of polyethylene and other film surface is necessary to render their affinity to inks, glues, and other coatings. A widely accepted treatment method is by corona discharge.

II. EXISTING METHODS

The Model BD-80 High Frequency Corona Surface Treater is intended to treat the surfaces of polymeric materials in circumstances where different strategies are unreasonable or incomprehensible. The high recurrence utilized grants helpful corona to be created utilizing just a solitary cathode. This makes conceivable the corona treatment of huge or sporadically molded surfaces where fire treatment may have been required previously. Corona treatment doesn't mess twisting up every now and again experienced with fire treatment. The single cathode design of the Model BD-80 implies that strikethrough, or dielectric breakdown of a meager film is more averse to happen than with customary corona treaters requiring a ground anode.

In any case, the corona delivered by the Model BD-80 is amount to that of a traditional two-cathode corona treater of a similar force. The uniqueness of the Model BD-80 lies in its capacity to treat the surfaces of enormous, thick, or sporadically molded articles produced using polymers.

Organized by

Department of ECE, Adhiyamaan College of Engineering, Hosur, Tamilnadu, India

III. PROPOSED METHODS

The proposed framework affirming the particulars and exhibitions of a corona treater testing computerization .it needs to experience various testing strategies. The Corona Treating System, planned and built by Enercon, is one of the least difficult and best accessible today. Unwavering quality, security, proficiency, effortlessness, simple entry and appearance are a portion of the significant contemplations and advantages of the Enercon Corona Treating System.

IV. WORKING OPERATION

A. Auto Transformer

An autotransformer is an electrical transformer with just one winding. The "auto" (Greek for "self") prefix alludes to the single loop acting alone, not to any sort of programmed system. In an autotransformer, bits of a similar twisting go about as both the essential winding and secondary winding sides of the transformer. Conversely, a common transformer has separate essential and optional windings which are not associated with one another.

B. Power Supply Panel Board



Fig 1: Power Supply Panel Board

Each electrical contraption or machine is furnished with protection between live part and earth or between two distinct areas of live parts. This protection is required to be tried at high voltage esteems suggested by pertinent significant guidelines.

C. Oil Tank

Transformer oil (otherwise called protecting oil) is a unique sort of oil which has fantastic electrical protecting properties and is steady at high temperatures.

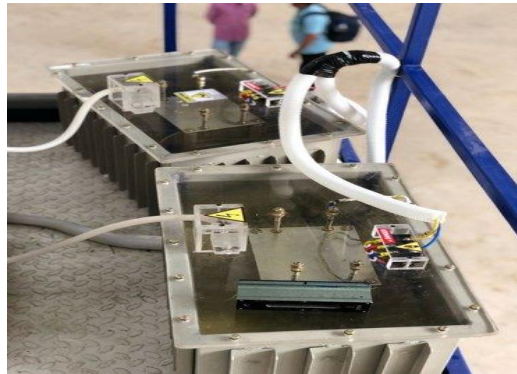


Fig 2: Transformer Testing Oil Tank

Transformer oil is utilized in oil-filled electrical force transformers to protect, quit arcing and crown release, and to disseminate the warmth of the transformer (for example go about as a coolant). Transformer oil is likewise used to safeguard the transformer's center and windings – as these are completely inundated inside the oil. Another significant property of the protecting oil is its capacity to forestall oxidation of the cellulose-made paper protection.

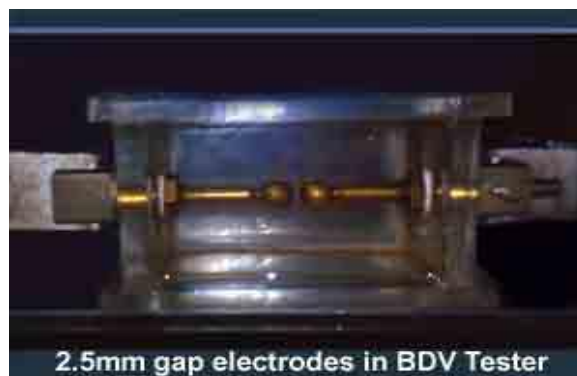


Fig 3: Transformer Oil Testing

The transformer oil goes about as a boundary between the barometrical oxygen and the cellulose – maintaining a strategic distance from direct contact and thus limiting oxidation. The degree of transformer oil is ordinarily estimated utilizing a MOG (Magnetic Oil level Gauge).

For estimating BDV of transformer oil, versatile BDV estimating unit is commonly accessible at site. Right now, is kept in a pot in which one sets of anodes are fixed with a hole of 2.5 mm (in some pack it 4mm) between them. Presently gradually rising voltage is applied between the terminals. The pace of rising voltage is controlled at 2 KV/s and watch the voltage at which starting beginnings between the cathodes. That implies at which voltage dielectric quality of transformer oil between the anodes has been separated.

D.HV Transformer

High voltage transformers are typically utilized in high voltage labs for testing reason. This transformer is exposed to transient voltages and floods during their typical activity when the protection under test separates. To

Organized by

Department of ECE, Adhiyamaan College of Engineering, Hosur, Tamilnadu, India

withstand these motivation voltages, theprotection ofthese transformers must be deliberately structured. These are generally single stage, centre sort transformers



Fig 4: HV Transformer

V.SOFTWARE DESCRIPTION

Laboratory Virtual instrument Engineering Workbench) is a graphical programming condition which has gotten common all through research labs, the scholarly world and industry. It is an incredible and flexible investigation and instrumentation programming framework for estimation and robotization. Its graphical programming language called G writing computer programs is performed utilizing a graphical square outline that assembles into machine code and kills a ton of the linguistic subtleties. Lab-VIEW offers more adaptability than standard lab instruments since it is programming based. Utilizing Lab-VIEW, the client can begin precisely the sort of virtual instrument required and developers can without much of a stretch view and change information or control inputs. The notoriety of the National Instruments Lab-VIEW graphical dataflow programming for amateurs and experienced developers in such huge numbers of various building applications and enterprises can be credited to the product's instinctive graphical programming language utilized for computerizing estimation and control frameworks.

The graphical language is named "G"; not to be mistaken for G-code. Initially discharged for the Apple Macintosh in 1986, Lab-VIEW is generally utilized for information securing, instrument control, and modern mechanization on an assortment of working frameworks (OSs), including Microsoft Windows, different adaptations of Unix, Linux, and macOS. The most recent forms of Lab-VIEW are Lab-VIEW 2019 and Lab-VIEW NXG 3.1, discharged in May 2019.

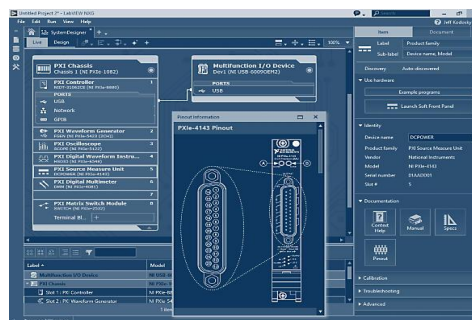


Fig 5: Block Diagram Window

VI. ADVANTAGES OF LABVIEW

- A. Graphical UI: Design experts utilize the intuitive UI library by intelligently altering the many implicit client protests on the control's palette.
- B. Multi stages: most of PC frameworks utilize the Microsoft Windows working framework. Lab-VIEW chips away at different stages like Mac OS, Sun Solaris and Linux. Lab-VIEW applications are convenient across stages.
- C. Decreases cost and jam speculation: A solitary PC furnished with Lab-VIEW is utilized for endless applications and purposes it is an adaptable item. Complete instrumentation libraries can be made for not exactly the expense of a solitary customary, business instrument.
- D. Representation abilities: Lab-VIEW remembers a wide cluster of worked for perception apparatuses to display information on the UI of the virtual instrument as outline, charts, 2D and 3D representation. Reconfiguring properties of the information introduction, for example, hues, text dimension, diagram types, and more can be handily performed.
- E. Fast advancement with express innovation: Use setup based Express VIs and I/O collaborators to quickly make basic estimation applications without programming by utilizing Lab-VIEW signal Express.
- F. Assembled language for quick execution: Lab-VIEW is a gathered language that produces streamlined code with execution speeds equivalent to aggregated C and grows elite code.
- G. Basic application conveyance: Use the Lab-VIEW application manufacturer to make executables (exes) and shared libraries (DLLs) for sending.

VII. CONCLUSION

A corona release generator for surface treatment is proposed without the utilization of a stage up transformer with a high voltage auxiliary. The voltage increase is accomplished by utilizing just a LC arrangement full circuit. Points of interest of the proposed strategy contrasted with other realized techniques are broke down. Shut structure plan articulations for the key parts of the proposed generator are given.

To demonstrate the reasonability of the proposed strategy, a prototype generator was worked for 1-kW input power, single-stage 230-V rms, 50-Hz input voltage, and 9-kV rms yield voltage. The working recurrence is 30 kHz. Execution of the key parts of the model generator is given. For yield power estimation, Lissajous figures and direct averaging of the momentary voltage-current item are utilized. The general productivity accomplished is in the range somewhere in the range of 80% and 90%, which is higher than the effectiveness of the customary crown release generators.

REFERENCES

- [1] "Softal Electronic: Corona Pretreatment for Wettability and Adhesion," Tech. Rep. 102e [Online]. Available: <http://www.softal.de>
- [2] L. A. Rosenthal, "Method for the Surface Treatment of Thermoplastic Materials," U.S. Patent 4 145 386, Mar. 20, 1979.
- [3] P. B. Sherman, "Corona discharge treatment," in Proc. IEEE Ind. Appl. Soc. (IAS) Conf., Oct. 1993, pp. 1669–1668.
- [4] H. Fujita and H. Akagi, "An approach to a broad range of power control in voltage-source series resonant inverters for corona discharge treatment-pulse-density-modulation," in Proc. IEEE Power Electron. Spec. Conf. (PESC), Jun. 1997, pp. 1000–1006.
- [5] H. Fujita and H. Akagi, "Control and performance of a pulse density modulated series-resonant inverter for corona discharge process," IEEE Trans. Ind. Appl., vol. 35, no. 3, pp. 621–627, May/Jun. 1999.