

Organized by

Department of ECE, Adhiyamaan College of Engineering, Hosur, Tamilnadu, India

Implementation of Boiler Monitoring System with Human Machine Interface

N.Nagaraju¹, A.Abila Jerlin², S.Aishwarya Lakshmi³, M. Atchaya⁴, B. Jeeviyashree⁵

Associate Professor, Department of ECE, Adhiyamaan College of Engineering, Hosur, Tamilnadu, India¹

U.G. Student, Department of ECE, Adhiyamaan College of Engineering, Hosur, Tamilnadu, India^{2,3,4,5}

ABSTRACT: In this industrial world, boilers are very critical for strength plant functioning, and approximated that three-fourth of leakage is due to boiler damages. This has led to many catastrophic accidents ingesting many lives. The conventional strategies have many drawbacks in leakage detection. Therefore, the vital idea is to make an embedded simple shape via which we can get right of entry to and manipulate all of the extensive parameter by using sensors. Furthermore, we manage and display the kettle through android human system interface. An android provision mission is utilized to control the entire structure by getting access to the parameter. The requisition has the traits to get ongoing mechanism information and getting simple signals through android utility. This idea may be carried out in lots of chemical and petrochemical industries to make them extra ready and superior.

KEYWORDS-Boiler, Sensors, Android application, Controller, Wi-Fi.

I.INTRODUCTION

The large promoting of the worldwide energy step by step multiplied the demand for the need of internet. Therefore, corporations want to provide a lot of substances to meet people's living wishes. According to the record, the leakage of power plant boilers debts for a larger share of all injuries. An extreme leakage impacts the regular operation of the machine. Such coincidence no longer only governs the economics of the power plant however also pollutes the environment. Therefore, the leakage status of boilers have to be monitored carefully. On February 3, a boiler discharge passed off in Jixi, Ningbo. Most of the three-degree buildings at the web site collapsed, thereby causing 5 deaths and six accidents. This Project provides an option for monitoring and controlling of energy flora even in far off place similarly to the manipulate room. The proposed method develops the far flung monitoring and manipulate of boiler temperature the usage of wireless conversation. The want for power technology in India increases day by day because of different factors. Nearly three-fourth of the strength manufacturing is from the thermal strength plant life in various places of the U.S.A. Supervising and controlling of these electricity flow always is a ought to, given that those boilers are operated constantly. This technique makes use of Internet of Things (IOT) as the platform of conversation.

The proposed approach will in shape and offer a start-up initiation for this future idea. In this project we're the usage of temperature sensor to sense the temperature of the boiler. Whenever the temperature cost is surpassed to prescribed value it offers the alerts through Wi-Fi. In this paper, we awareness specifically on analysis overall performance on the advanced prototype machine.

II.LITERATURE SURVEY

The boiler drum^[1] degree is controlled via the Arduino Uno from pulse output of ultrasonic degree sensor. Arduino Uno is a microcontroller in which receives the pulse sign and then ship to the Liquid Crystal Display (LCD) or Personal Computer (PC) with the help of the Local Area Network (LAN). Another facet the identical

Organized by

Department of ECE, Adhiyamaan College of Engineering, Hosur, Tamilnadu, India

stage of signal can ship to the IOT module (or) by means of the use of Wi-Fi module. In this idea the primary gain is boiler drum level controlling, this motion is taken with the aid of the Internet of Things (IOT), which means that the signal from Internet of Things (IOT) connected devices like smart phones or laptops etc., From the devices the sign will be dispatched to the Arduino Uno microcontroller for controlling the feed water waft within the boiler drum by using relay movement. Through the smart telephones or computer can keep the N quantity of statistics, as well as manipulate the drum degree. In this machine the tracking action can also accomplished with the help of internet site cope with.

In Distributed temperature sensors (DTS)^[2] measure temperatures through optical fibers. Those optoelectronic gadgets offer a continuous profile of the temperature distribution alongside the cable. The important measuring principles are primarily based on detecting the returned-scattering of light, e.g., detecting through Rayleigh, Raman, and Brillion standards. The application domain names span from conventional programs inside the allotted temperature or stress sensing within the cables, to the modern day “clever grid’s” initiation within the power systems, and so on. In this paper, we present comparative reviews of the different DTS technology, distinct applications, standard, and upcoming, one kind of producers.

III.METHODOLOGY

The gadget contains of android cellular tool, WI-FI, Bluetooth, Atmel microcontroller, Sensor, and coolant for controlling and activating the device. This machine includes microcontroller that's the primary controlling a part of the device, it get enter and provide output to the boiler to experience the leakage. The Thermister is used to degree the temperature of the boiler when it's miles crossed the set temperature indicates the high alert in cell and also prompt the cooling fan with microcontroller.

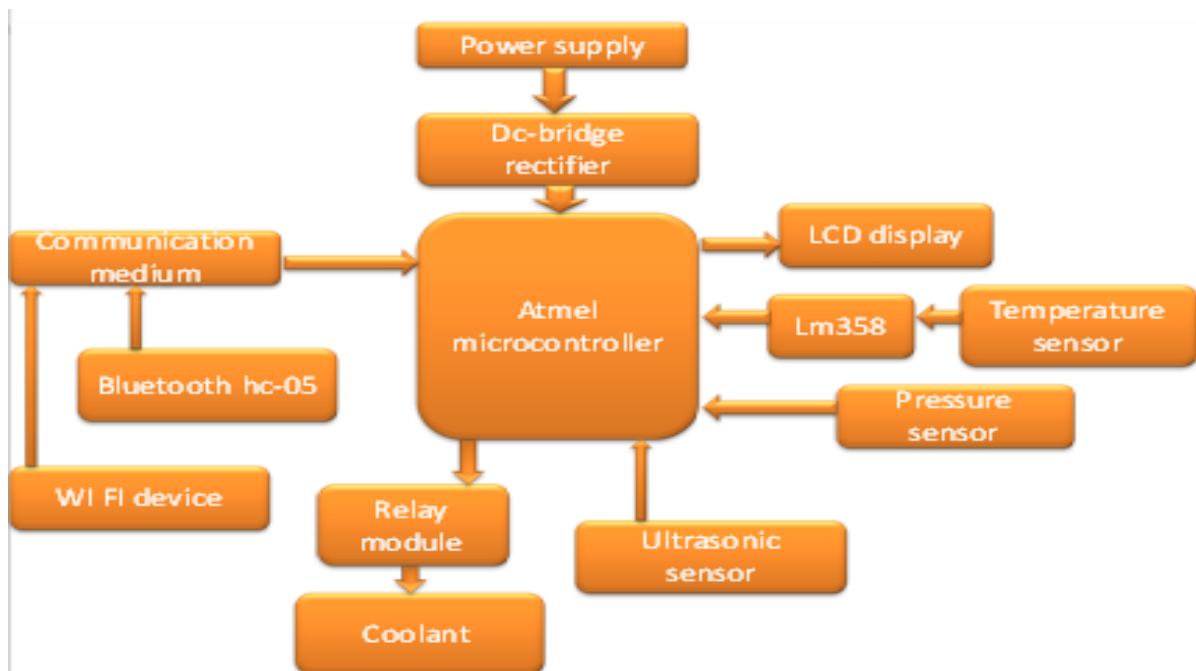


Fig 1: Block diagram

Organized by

Department of ECE, Adhityamaan College of Engineering, Hosur, Tamilnadu, India

Pressure and temperature sensor is used to hit upon the humidity and heat degree within the boiler. Bluetooth and WI-FI is used to show the leakage details to manager and instrumentation engineer to monitor the device. The proposed device offers controlling the gadget via on-line, rather than tracking the whole lot manually.

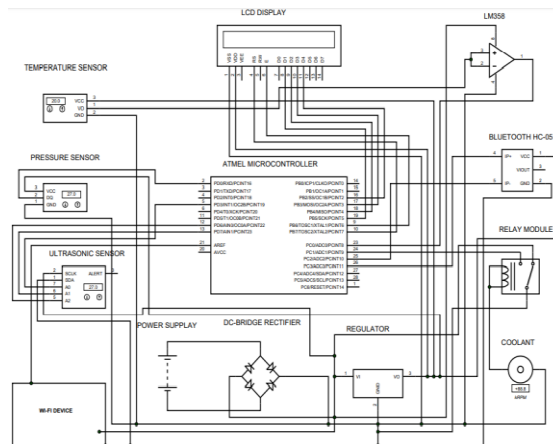


Fig 2: Circuit diagram

IV.MATERIAL USED

A.ATMEL MICROCONTROLLER

It is normally used to interface the enter and output element to the boiler. It is the main block within the device. The coronary heart of the shape is to interface Atmel controller to WI-FI.

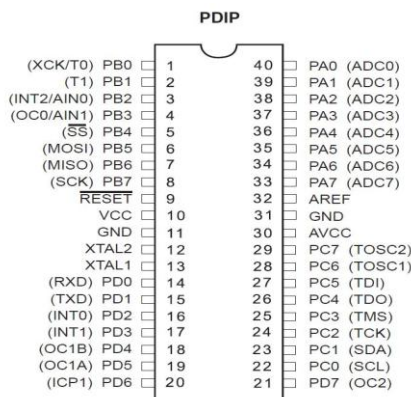


Fig 3. Pin diagram of Atmel microcontroller

B.RELAY MODULE

The relay on a boiler is a part of the boiler system which triggers the boiler to launch heat while the thermostat calls for it. The thermostat is a tool which measures the temperature of a place, and whilst the location receives too cold, it will deliver a message to the relay transfer to release warmth from the boiler.

Organized by

Department of ECE, Adhityamaan College of Engineering, Hosur, Tamilnadu, India

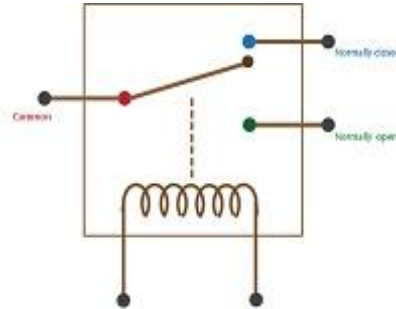


Fig 4. Relay module

C. ULTRASONIC SENSOR

Common distance size technology encompass laser ranging, microwave ranging, and ultrasonic ranging. The design of this topic adopts ultrasonic variety method. Ultrasonic ranging is also extensively used in many applications along with ranging and item.



Fig 5. Ultrasonic sensor

| LV-MaxSonar [®] -EZ beam patterns | EZ0™ | EZ1™ | EZ2™ | EZ3™ | EZ4™ |
|---|------|------|------|------|------|
| Detection pattern to a 1/8 inch diameter dowel. | | | | | |
| Detection pattern to a 1/4 inch diameter dowel. | | | | | |
| Detection pattern to a 1 inch diameter dowel. | | | | | |
| Detection pattern to a 3 1/4 inch diameter dowel. | | | | | |

= 5V
 V+ = 3.3V
(Distances recorded on a 1 foot grid)

Fig 6. Graphical description

Organized by

Department of ECE, Adhiyamaan College of Engineering, Hosur, Tamilnadu, India

D.PRESSURE SENSOR

It is used to investigate the boiler strain inside the device. It is one of the crucial parameter in any boiler industries. A stress sensor converts changes in pressure of a gasoline or a liquid into an electrical sign by a stress sensing device, and generates an analog output proportional to the pressure or switching output which operates at a specific pressure level.



Fig 7.Pressure sensor

E.TEMPERATURE SENSOR

Temperature sensor is a tool to degree the temperature thru an electrical signal it requires a thermocouple. Thermister in boilers need to preserve a positive temperature degree for safe, dependable and powerful operations.



Fig 8.Thermister

The dimension of the temperature sensor is about the hotness or coolness of an item. It maintains vital element in many different packages.

F.LCD DISPLAY

In this method, we've got used 16x2 LCD display to produce an seen picture. It is used in lots of circuits. Display in boilers is used to show the leakage information manually.

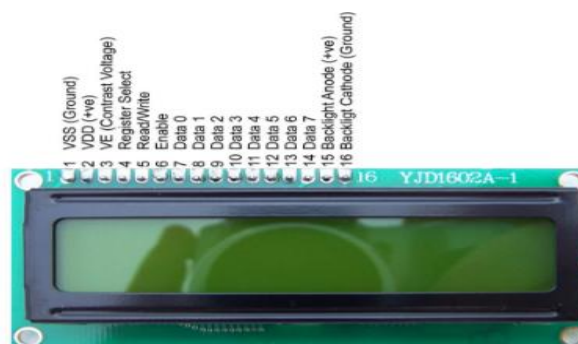


Fig 9. LCD display

Organized by

Department of ECE, Adhiyamaan College of Engineering, Hosur, Tamilnadu, India

G. LM358 CONVERTOR

It is an op-amp used to control the temperature of the tool through the usage of Thermister. It is given as an input to Atmel micro controller.

H. BLUETOOTH HC-05 MODULE

Bluetooth is used to offer conversation the various additives within the tool. It gets output from Atmel microcontroller. It is used for lots of programs like Wi-Fi headset and plenty of extra customer utility.

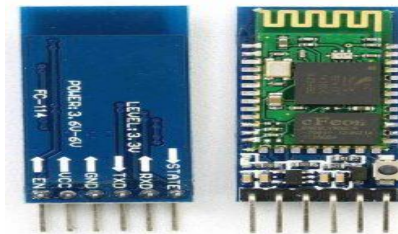


Fig 10. Bluetooth module

V. RESULTS

We proposed a method to locate the damaging damages from the boiler via human device interface and the end result acquired is shown below.

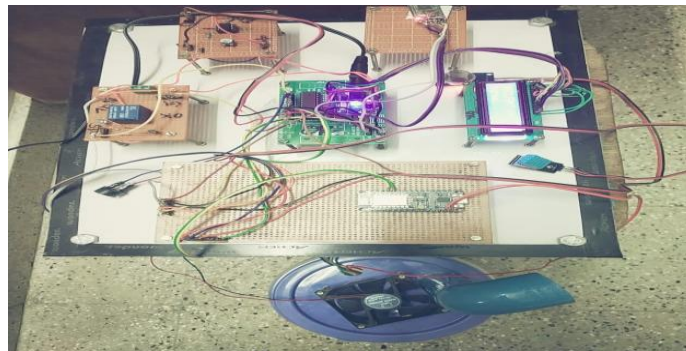


Fig 11. Final output

A. THE USE OF ANDROID APP

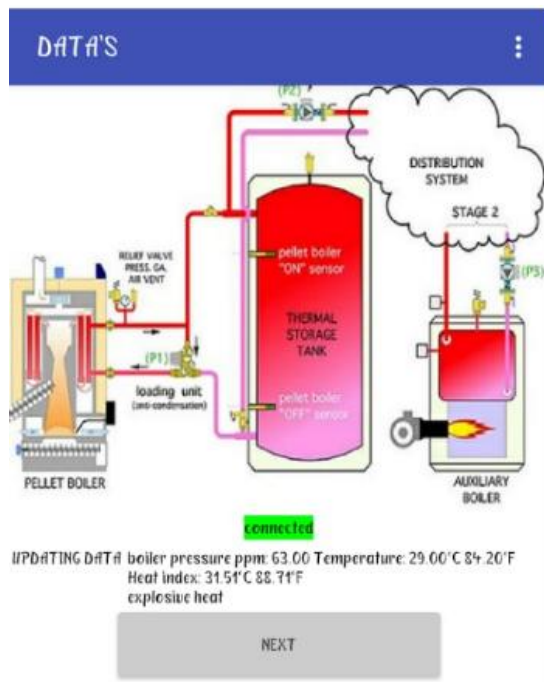


Fig 12. Detection of explosive heat

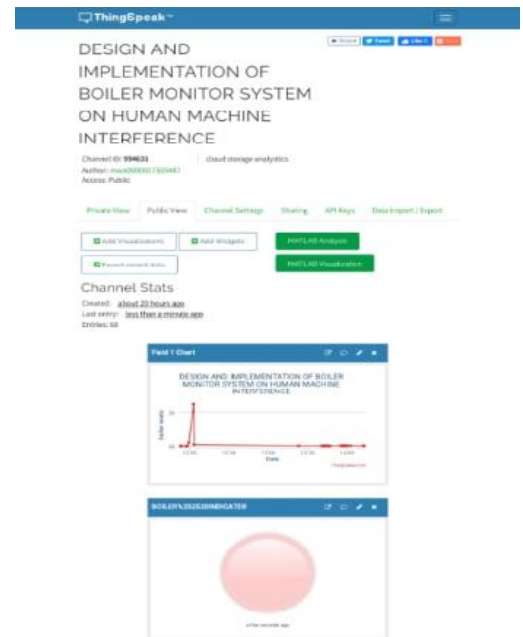


Fig 13. Online server webpage

V. CONCLUSION

In this paper, a new control method is discussed, which adopts a prototype of a system has been developed which is believed to provide good control to people by making a precaution to avoid harmful accidents in chemical industries and power plants. The development of this project integrates advance technology with android application and the use of Embedded System to enhance the leakage detection.

REFERENCES

- [1] Jagannath, V.M.D and B.Raman (2007). "Wireless Bearing Monitoring System" conversation systems software program and Middleware, COMSWARE 2007, 2d International convention.
- [2] Nguyen.T.A and Aiello.M, (2013) "Energy clever homes primarily based on user activity: A survey", Energy and buildings, Vol. 56, No. 2. Pp. 244-257.
- [3] Rajkumar "Boiler drum stage manipulate by using using huge open manipulate with 3 element manage gadget" International Monthly Refereed Journal of Research in Management & Technology 2013.
- [4] Shital S. Chopade, Pradhuman Verma, Prashant Verma "Simulation of Boiler Control using PLC & SCADA" International Journal of Engineering and Advanced Technology (IJEAT), 2013.
- [5] De Paola, A.M.Ortolani, Lo Re Anastasi.G and Das S.K,(2015), "Intelligent control systems for strength performance in buildings: A survey", ACM Computing Surveys, Vol. 47, No. 1, pp. 23-26.
- [6] Gürtürk, M., & Oztop, H. F. "Energy analysis of a circulating fluidized bed boiler cogeneration power plant". Energy Conversion & Management, 2016, vol.120, pp. 346-357. 2016.05.06.
- [7] Fan, H., Wang, X., Ru, X., Fan, H., Wang, X., & Ru, X., et al. A study of mineralization of wutai gold deposits in shanxi province based on the weight of evidence-singularity-gray theory. Geological Bulletin of China, 2017, vol. 36(8), pp. 1462-1466.
- [8] Chen, S. H., & Wang, C. P. The application of gray theory on wire cut electric discharge machine non-resistance sparkle circuit prediction. International Journal of Advanced Manufacturing Technology, 2018, vol. 95(5-8), pp. 2811-2820.
- [9] Roopal Agrawal, Umesh C.Pati "Internet Based Boiler Drum Level Control System Using Lab view"
- [10] Industrial Boilers by David Gunn and Robert Horton, Longman Scientific & Technical, New York.