

Detect and Prevent the Theft of New Bornbaby in Government Hospital

L. David william raj¹, S.Purushothaman², M.Mohamed ismail³, V.Prakash kumar⁴

Assistant Professor, Department of ECE, Adhiyamaan College of Engineering, Hosur, Tamilnadu, India ¹ |

UG Scholars, Department of ECE, Adhiyamaan College of Engineering, Hosur, Tamilnadu, India ^{2,3,4}.

ABSTRACT:Our main idea is to protect new born babies from being theft. When baby is born, the details of it will be uploaded by the admin in main system and RF tag with parent's details and phone number will be tied to baby. Signal from tag is continuously monitored by the RF receiver which are placed around the premises. If signal from tag is lost or any damage to band or signal crosses the certain region fixed, SMS will be send to the respective number which is in tag and light alarm will be started. Now admin should check for the thing happened and proper action should be taken the process should be rest.

KEYWORDS: RF receiver, JAVA, PHP, GSM, VOIP, RFtransmitter.

I. INTRODUCTION

The newest infant protection technologies work with RFID, QR code and GPS networks to supply field wide, period data on associate infant's location and standing, whereas connecting to platforms and devices that exist already among workers and patient processes. These embody case history platforms, nurse decision systems and such mobile devices as smartphones. a collection of two identification band with matching numbers is provided for every child and parent. The band is placed on the infant's arm/leg. The band is connected with hospital premises to observe them. within the RFID tagging system, the tags are going to be connected to the baby, and its mother and therefore the attender involved right away once the baby is born. The tag can carry details of the baby and its mother details. just in case of baby thievery, once the baby is rapt on the far side a hard and fast distance, the units put in with antenna and transceivers within the ward can browse the semiconductor unit within the RFID tag and lift a light-weight alarm. RFID device lets out associate alarm thereby alerting the protection workers et al. GPS can then send location coordinates and facilitate flavoring from dominant unit to the bottom station from that the flavoring area unit forwarded to the closest station house, 3 mobile numbers of oldsters and hospital if the incident happens with the assistance of VOIP (voice over web protocol) and therefore the networks used through IPV4(internet protocol version 4). "The employee could determine this as a warning, although it very is what may well be referred to as a nuisance alarm," they visit a baby's space to confirm that it's connected properly and to stop nuisance alarms. Consolidation of those technologies can revolutionize the approach kid security perform. This methodology additionally provide protection from baby swapping attributable to parring the kid and mother RFID tag and additionally it's monitor by receiving signals.

II. LITERATURE SURVEY

That the RFID tag and has mounted to the baby and also the mother, the RFID receiver has been mounted within the hospital region or ward region as per the Hospital region. Then the receiver has been active by receiving the RFID tag signal through the RFID receiver and it's been observation. Then it's store the knowledge has hold on within the RFID tag regarding the baby and mother here we tend to additionally paring the tag to stop the swapping of baby within the hospital.if the tag has been disconnect/damaged its create responsive to the admin.BY exploitation the software has been store the information in tags and additionally storing of

fogeys mobile range within the tag, here we tend to allocate that was three folks range embody of admin and one police range. [1] This study proposes a period location and child observation system supported active RFID. frequency Identification (RFID) technology meets identification and pursuit newborn babies in hospitals to observation newborn babies with potential to hurry up and increase responsibility of concerned processes. Because of this, this study proposes a simple and economical child observation system to cut back the potential risks of the thieving, misuse hold and abnormal temperature. The system will accurately acknowledge the locations of newborn babies by employing a call tree classifier when the active RFID readers has received totally different intensity of magnetism waves transmitted by active RFID tags. The child observation system can also notice temperature anomalies of newborn baby's real time by the temperature sensors. [2] he uses of frequency identification (RFID) technology for identity of object, pursuit of object, location identification and security of resource is documented. The aforementioned capabilities of RFID area unit also can be employed in the health care business. the employment of RFID in conjunction with IT will directly solve the assorted problems that area unit presently faced by health care organizations whereas additionally serving to to drive down prices, this analysis is a trial to shield the newborns within the hospital's exploitation the RFID technology. A wristband active tag may be used for this purpose. The wristband could also be tied to kid. and also the approved hospital employees. RFID browsers in newborn hall could also be accustomed read the signals and keep pursuit on the activities of kids and approved employees members gift within the hall. With correct automation it'll be not possible to swapping and snatch of newborns. [3] at the moment, frequency Identification (RFID) technology has been wide accepted in hospitals to observation newborn babies. This study proposes a simple and economical child observation system to cut back the potential risks of the thieving, misuse hold and abnormal temperature. The system will acknowledge easily totally different locations of newborn babies that area unit connected wristband active RFID tags. The system can accurately recognize the locations of newborn babies by using Bayesian network classifier after the active RFID readers has received completely different intensity of magnetism waves transmitted by active RFID tags. The baby observance system can also observe temperature anomalies of newborn baby's real time by the temperature sensors. The employees is complicated and therefore the flow of individuals is incredibly massive in baby hospital. a way to enhance the identification of newborns and to forestall misuse hold and to watch the physiological standing of newborn babies are the vital comes in baby care. it's turning into a lot of associate degreed a lot of vital at hospitals to determine a baby observance system victimization RFID in today's competitive surroundings. In recent years, high expectations for the mixing of RFID in tending scenarios have emerged. However, in spite of recent research interest within the tending environment, RFID adoption remains in its infancy and a bigger range of expertise got to be collected. As a consequence of Severe Acute metabolism Syndrome (SARS) wherever thirty-seven patients died and a part of the medical personnel was additionally infected the Ministry of Economic Affairs in Taiwan granted analysis funds to support the implementation of RFID in tending. Baby location system supported active RFID. so as to worry the newborn, the newborn within the baby area are connected wristband active RFID tags. [4] planned associate degree expertise of pursuit aged patients littered with dementedness was additionally tested within the missionary II Hospital with the aim of providing period location associate degreed an alert system if a patient goes on the far side his expected location. Medical personnel provided feedback, however patients themselves reacted negatively to the concept of police work. At present, frequency Identification (RFID) technology has been wide accepted in hospitals to trace and find newborn babies. RFID positioning systems may be broadly speaking divided into 2 classes: tag and reader localization, looking on the RFID part form of the target. In tag localization schemes, readers and presumably tags as deployed as reference points at intervals the realm of interest and a positioning technique is applied for estimating the situation of a tag.

Organized by

Department of ECE, Adhiyamaan College of Engineering, Hosur, Tamilnadu, India

III. PROPOSED SYSTEM

The RFID has been utilized in this method to form detection and protective from new born baby larceny and conjointly we have a tendency to are victimization the GSM to form a message alert if there's any injury or if the band is within the out of aim the RFID tag, that will intimate to the hold on member within the tag. RFID could be a high frequency reader within the base of air interface protocol normal, it's most vary of scan. an energetic RFID system will scan tags from one,500 feet away or additional because the tag broadcast a proof and also the systems square measure designed for longer-range application. Even inside one style of RFID, but there are often {wide array bigselection big vary} of scan range. Then the employment of RFID receiver to form check baby is in safe zone, if the band is cut or broken the sunshine alarm has been manufacture and a message sent to revered people/parents. Here we have a tendency to victimization the computer code use of JAVA and PHP to induce the small print and store the small print within the tag. The system would have safety features to permit solely licensed ward personnel to control the system. it's planned to implement a technology resolution to sight and forestall larceny of latest born babies in hospitals. The work leverages RFID to record and track baby's knowledge and identity. the answer unceasingly monitors the babies within the ward. As presently as a baby is taken out the word, AN alarm is triggered within the ward. AN choice to send AN SMS responsive to the registered individuals is additionally used. AN administration console would permit the ward administrator to record and fetch and details of the babies.

RFID TRANSMITTER



Fig 3.1

The RFID tag has been designed within the chip kindat that has perpetually causing the signal from one aspect of antenna to a different aspect to form check of signals is inward the RF receiver that has check The signal incessantly form a protracted distance in a very ward or hospital region. associate RFID tag contains a little transmitter once triggered by associate magnetic attraction interrogation pulse from a close-by RF reader. A larger vary for a RFID tag is hundred meters. These considerations resulted in customary specification regarding privacy and security is use on chip cryptography. frequency (125 kHz) tags, have terribly short browse vary, thus here we have a tendency to are mistreatment passive ultra-high frequency (860-960 MHz) it's offer quite fifteen feet's.

The passive RFID tag have no internal power supply. Their memory is limited. It's a low

RFID RECEIVER

A RFID reader could be a device accustomed gather info from associate degree RFID tag, that is employed to trace individual objects. Radio waves ar accustomed transfer knowledge from the tag to a reader. RFID could be a technology similar in theory to bar codes. However, the RFID tag doesn't ought to be scanned directly, nor will it need line-of-sight to a reader. The RFID tag it should be inside the vary of RFID reader, that vary from three to three hundred feet's, so as to be scan. RFID technology permits many things to be quickly scanned and change quick identification of a selected product, even once it's encircled by many alternative things. it's been connected with the GSM to send the message whereas there's any signal has been disconnected within the receiver



Fig: 3.1

It provides the signal to the GSM and it sends the information message to the receiver. Then it stores the info of the signal has disconnected from the RFID tag.

GSM



Fig 3.2

Global system for mobile communication (GSM) may be a globally accepted commonplace for digital cellular communication. GSM is that the name of a common palletization cluster established in 1982 to make a typical European mobile phone standard that might formulate specifications for a Pan-European mobile cellular radio system operational at 900MHz. It is calculable that a lot of countries outside of Europe can be part of the GSM partnership.

Before viewing the GSM specifications, it's necessary to grasp the subsequent basic terms:

- Bandwidth-the vary of a channel's limits; the broader the information measure, the quicker knowledge are often sent. Bits per second(bps)-a single on-off pulse of data; eight bits area unit such as one computer memory unit. Frequency-the range of cycles per unit of time; frequency is measured in hertz (Hz). weight unit (K)-kilo is that the designation for one,000; the abbreviation kbps represents one,000 bits per second. megacycle per second (MHz)-1,000,000 hertz (cycles per second). Milliseconds (MS)-one-thousandth of a second.
- Watt (W)-a live of power of a transmitter Specifications for various personal communication services (PCS) systems vary among the various PCS networks. Listed below may be a description of the specifications and characteristics for GSM. Frequency Band-The frequency vary such for GSM is one,850 to 1,990 Mc (mobile station to base station).
- Duplex Distance-The duplex distance is eighty Mc Duplex distance is that the distance between the transmission and downlink frequencies. A channel has 2 frequencies, eighty Mc apart. Channel Separation-The separation between adjacent carrier frequencies. In GSM, this can be two hundred rates.
- Modulation-Modulation is that the method of causing a symptom by dynamical the characteristics of a carrier frequency. this can be drained GSM via Gaussian minimum shift keying (GMSK). Transmission Rate-GSM may be a digital system with Associate in Nursing over-the-air bit rate of 270 kbps.
- Access Method-GSM utilizes the time division multiple access (TDMA) construct. TDMA may be a technique within which many totally different calls could share an equivalent carrier. every decision is allotted a specific slot. it's send the emergency message the GSM, and conjointly we've got keep the module they need send message to

Organized by

Department of ECE, Adhiyamaan College of Engineering, Hosur, Tamilnadu, India

the revered peoples. As Associate in Nursing emergency method. whereas the signal is get onto conjointly mechanically it starts lightweight alarming .

SYSTEM OVERVIEW

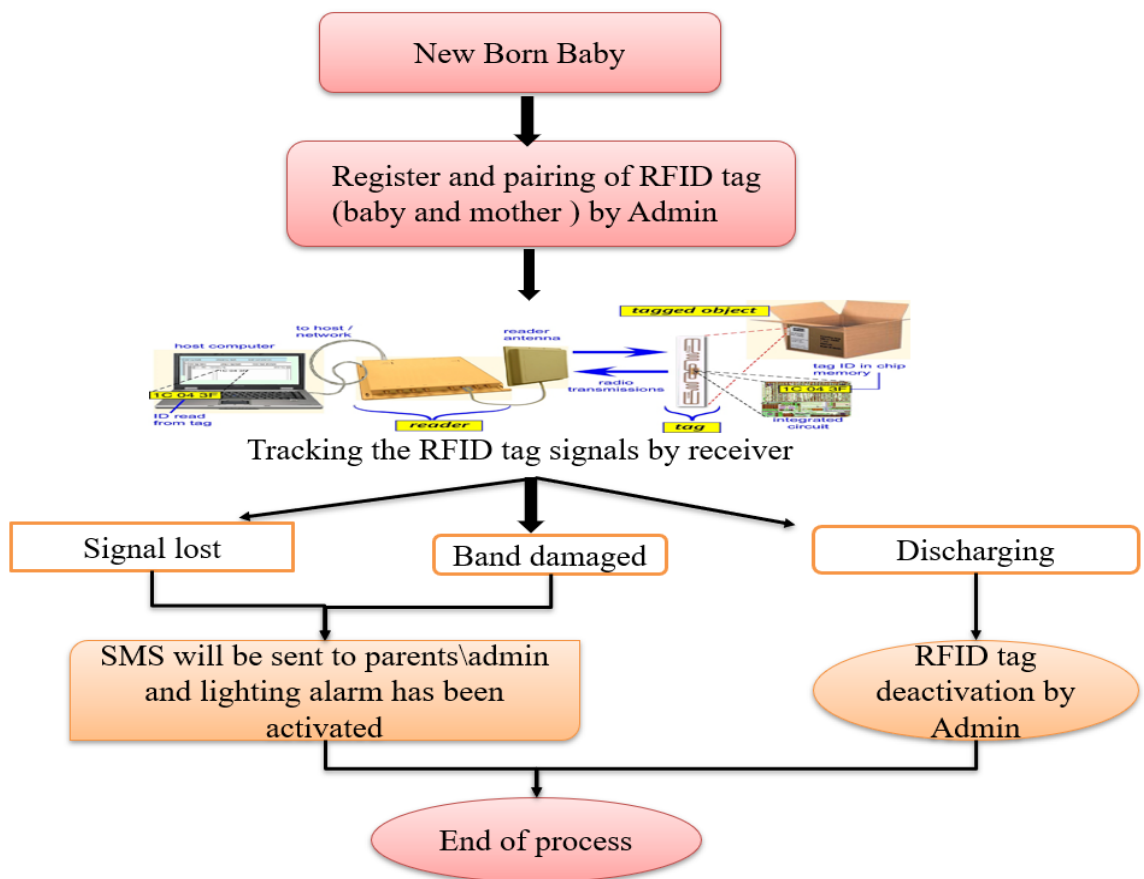


Fig: 3.3

NODEMCU



Fig: 3.4

NodeMCU could be a low-priced open supply IoT platform. It at the start enclosed microcode that runs on the ESP8266 Wi-Fi Sock from specific if Systems, and hardware that was supported the ESP-12 module. Later, support for the ESP32 32-bit MCU. NodeMCU is AN open supply code that open supply prototyping board styles square measure obtainable. The name "NodeMCU" combines "node" and "MCU" (micro-controller unit). The term "NodeMCU" to be precise refers to the code instead of the associated kits. each the code and prototyping board styles square measure open supply. The code uses the Lua scripting language. The code is predicated on the Eula project, and engineered on the specific if Non-OS SDK for ESP8266. It uses several open supply comes, like lua-cjson and SPIFFS. because of resource constraints, users got to choose the modules relevant for his or her project and build a code tailored to their desires. Support for the 32-bit ESP32 has conjointly been enforced. The prototyping hardware usually used may be a card functioning as a twin in-line package (DIP) that integrates a USB controller with a smaller surface-mounted board containing the MCU and antenna. the selection of the DIP format permits for straightforward prototyping on breadboards. the planning was at the start was supported the ESP-12 module of the ESP8266, that may be a Wi-Fi SoC integrated with a Tensilica Xtensa LX106 core, wide utilized in IoT applications.

ESP8266 Arduino

As Arduino.cc began developing new MCU boards supported non-AVR processors just like the ARM/SAM MCU and employed in the Arduino Due, they required to change the Arduino IDE so it might be comparatively straightforward to alter the IDE to support alternate toolchains to permit Arduino C/C++ to be compiled for these new processors. They did this with the introduction of the Board Manager and also the SAM Core. A "core" is that the assortment of code parts needed by the Board Manager and also the Arduino IDE to compile Associate in Nursing Arduino C/C++ supply file for the target MCU's machine language. Some ESP8266 enthusiasts developed Associate in Nursing Arduino core for the ESP8266 Wi-Fi SoC, popularly known as the "ESP8266 Core for the Arduino IDE". This has become a number one code development platform for the assorted ESP8266-based modules and development boards, together with NodeMCU. The NodeMCU (Node Microcontroller Unit) is Associate in Nursing open supply code and hardware development atmosphere that's designed around a awfully cheap System-on-a-Chip (SoC) known as the ESP8266. The ESP8266, designed and made by Express if Systems, contains all crucial parts of the fashionable computer: computer hardware, RAM, networking (Wi-Fi), and even a contemporary software system and SDK. once purchased at bulk, the ESP8266 chip.

CASE DIAGRAM

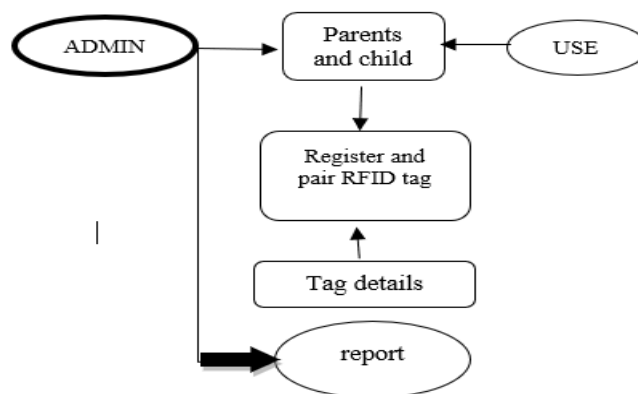


Fig: 3.5

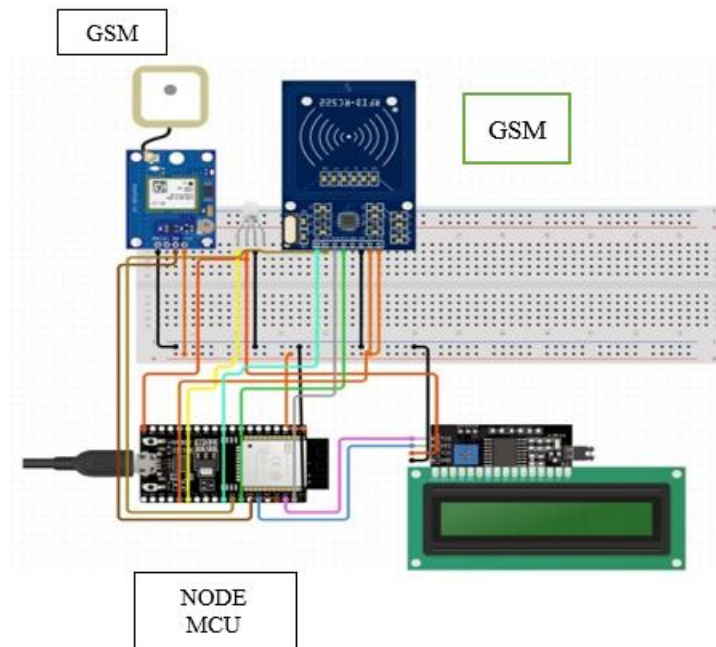


Fig : 3.6

IV. RESULT



Fig :4.1

- That the while the signal disconnected from the RF receiver then the sms alert and light alarm has been rang in the ward, the message will send to the respective people of stored data. That they use IPv4 for transfer the information.
- It has been send the details of the baby to the respected persons and have been intimate them as baby is missing.
- While the signal is disconnected it gives lighting alarm in the ward in the hospital.

Lighting alarm in the ward.



Fig :4.2

- We also have an application which is get and register the data of a child and mother in the tag.
- It gets all the details about baby and mother, it only can handle by the admin. To authenticate a mother for a child, both have been assigned a wristband with same ID. At the time of issuance, the necessary information related to mother and child has to be stored in the database

The mother data can store within the system and therefore the ID of tag are going to be for her ID, the kid data are going to be hold on within the system, the name and ID of his mother are going to be store in his record, the workers data are going to be hold on within the system with the ID of tag. The wristband with RFID active tags shall be lightweight weight, tamperproof and disposable so as to avoid biohazards. Any effort to get rid of or cut the wristband can trigger alarm if one isn't approved to try and do therefore. Even, any adjustment within the position of the baby is detected by the system.

V. CONCLUSION

The present work is an attempt to explore and describe the basic architecture of newborn protection System using RFID technology. A set of two wristbands of RFID active tag with same ID is used for child and any attempt of cradle kidnap and swapping.

REFERENCES

- [1] Hightower, J., Vakili, C., Borriello, C., Want, R.: Design and Calibration of the SpotON AD-Hoc Location Sensing System, UWCSE 00-02-02 University of Washington, Department of Computer Science and Engineering, Seattle, URL: <http://www.cs.washington.edu/homes/jeffro/pubs/hightower2001design/hightower2001design.pdf>.
- [2] RFID based protection to newborns in the hospitals. Ahmed qasim abd alhasan,syed imtiyaz hassan. URL:<https://www.researchgate.net/publication/327362657>
- [3] An intelligent infant monitoring system using active rfid, Shou-Hsiung Cheng. URL: https://doi.org/10.1007/978-3-642-28487-8_26
- [4] Holzinger, A., Schaupp, K., Eder-Halbedl, W.: An Investigation on Acceptance of Ubiquitous Devices for the Elderly in a Geriatric Hospital Environment: Using the Example of Person Tracking. In: Miesenberger, K., Klaus, J., Zagler, W.L., Karshmer, A.I. (eds.) ICCHP 2008. LNCS, vol. 5105, pp. 22–29. Springer, Heidelberg (2008)[CrossRefGoogle Scholar](#)
- [5] Tzeng, S., Chen, W., Pai, F.: Evaluating the business value of RFID: evidence from five case studies. International Journal of Production Economics, Abr 112(2), 601–613 (2008)[CrossRefGoogle Scholar](#).
- [6] Hightower, J., Vakili, C., Borriello, C., Want, R.: Design and Calibration of the SpotON AD-Hoc Location Sensing System, UWCSE 00-02-02 University of Washington, Department of Computer Science and Engineering, Seattle, URL: <http://www.cs.washington.edu/homes/jeffro/pubs/hightower2001design/hightower2001design.pdf>
- [7] Bluebean, (2007),The Benefits of RFID in the healthcare organization,RFID solution for the healthcare industry. URL:<http://www.rfidhealthcare.com/>.
- [8] Radio Frequency Identification Fundamentals and Applications, Design Methods and Solutions, Book edited by: Cristina Turcu,ISBN 978-953-7619-72-5, pp. 324, February 2010, INTECH,Croatia,downloaded from SCIYO.COM