



e-ISSN: 2319-8753 | p-ISSN: 2347-6710

# IJRSET

International Journal of Innovative Research in  
**SCIENCE | ENGINEERING | TECHNOLOGY**

# INTERNATIONAL JOURNAL OF INNOVATIVE RESEARCH

IN SCIENCE | ENGINEERING | TECHNOLOGY

Volume 11, Issue 8, August 2022

**ISSN** INTERNATIONAL  
STANDARD  
SERIAL  
NUMBER  
INDIA

Impact Factor: 8.118

9940 572 462

6381 907 438

[ijirset@gmail.com](mailto:ijirset@gmail.com)

[www.ijirset.com](http://www.ijirset.com)



# The Future of Customer Experience: Salesforce and the Integration of IOT, AI, and Big Data

**Arun Kumar Mittapelly, Vasanta Kumar Tarra**

Senior Salesforce Developer, USA

Lead Engineer, USA

**ABSTRACT:** The Internet of Things (IoT), Artificial Intelligence (AI), and Big Data are shaping the new evolving customer experience landscape. This transition points to the very important role that Salesforce, the world's leading Customer Relationship Management (CRM) platform, will play. This paper talks about how Salesforce uses these technologies to reinvent customer engagement, personalize and predict. And by connecting devices and systems in real time, IoT lets businesses collect actionable data about their customer's behavior and preferences. With the combination of AI inside Salesforce, delivered via tools like Einstein, processes can be automated and predictive analytics; recommendations are provided by this data. It also allows us to integrate big data and analyze massive datasets to find trends, improve decision making, and deliver hyper personalization experiences. The practical applications considered in the paper include predictive maintenance, real time customer support, and targeted marketing campaigns. Second, it discusses the problems of including IoT, AI, and Big Data in existing systems, including data privacy issues, technological complexities and organizational blockades. This paper features key trends, takes stock of innovations and serves as a roadmap for organizations looking to redefine customer experiences in the hyper digital world. It's no wonder Salesforce plays a pivotal marketing role in this future of customer-centric strategies.

**KEYWORDS:** Customer Experience, Salesforce, IoT, Artificial Intelligence, Big Data, Predictive Analytics, Personalization, CRM, Digital Transformation.

## I. INTRODUCTION

### 1.1. The Evolving Landscape of Customer Experience

However, today's competitive business environment has made Customer Experience (CX) a critical differentiator. The proliferation of digital technologies and increased customer expectations has led organizations to be compelled to innovate constantly. Today's customers want personalized, [1-4] seamless and proactive interactions, and companies must leverage modern technologies. A leader within the Customer Relationship Management (CRM) realm, Salesforce is a pioneer in integrating transformative technologies, such as the Internet of Things (IoT), Artificial Intelligence (AI), and big data, into its ecosystem.

### 1.2. Salesforce: A Catalyst for Digital Transformation

As in the CRM platform, Salesforce has been transformed into a suite of tools modern businesses can use to communicate with their customers across multiple touchpoints. However, additions with IoT, AI, and Big Data add functionality beyond traditional possibilities of CRM. Nevertheless, these technology facilitates gathering of true real time data from customers, analytics to extract actionable information from same, creating strategies that lead to customer satisfaction. So on the one hand we offer use cases like Salesforce Einstein and the AI engine with you on one side predictive analytics and intelligent automation on the other hand. They do it for massive data streams and bring contextually relevant experiences.

### 1.3. Role of IoT in Redefining CX

The openness that IoT is opening to gather data and connect it in real time. With billions of interconnected devices, the ability to no longer monitor things such as customer behaviors and product patterns in real time is now a thing of the past. Salesforce IoT Cloud makes it easy for companies to quickly and easily process this data into personalized customer journeys. For example, using predictive maintenance IoT allows you to tackle customer problems before it even happens which improves your customer's loyalty and trust.

#### 1.4. Harnessing AI for Personalization and Predictive Insights

To accelerate adoption of artificial intelligence, improving the customer experience, this is where Salesforce feels it's going. Einstein is useful tools which help businesses to predict customer demand, automate repeat tasks and to suggest the best next action. AI can analyze historical data and real time interaction to provide hyper-personalized experiences such as more tailored product recommendations or optimized communication timing to drive a deeper connection with customers.

#### 1.5. The Power of Big Data in Customer Insights

Integrating Big Data into Salesforce allows organizations to process and analyze giant datasets to discover patterns and trends. This capability enables businesses to make data-driven decisions, improve marketing strategies and increase service delivery. A synergy between Big Data and AI insights are comprehensive and actionable.

#### 1.6. Improving CRM Practices with Salesforce IoT Cloud



Figure 1: Improving CRM Practices with Salesforce IoT Cloud

The image captures the whole Internet of Things (IoT) revolution for CRM use: blending core domains such as data analytics, marketing, sales, [5] service, customer loyalty and customer experience into a comprehensive whole. The background interconnects structure signifies the data flow between IoT-enabled devices and the Salesforce platform with the synergy to process real time information. This dynamic integration enables customers to leverage actionable insights into customer behavior, preferences, and interactions, thus enabling first-party personalization and a data-driven approach to customer relationship management.

Businesses can collect huge amounts of customer data using IoT-enabled devices and process this data in the Salesforce IoT Cloud. This is great stuff, driven by AI data analytics, and everyone grew extremely good at marketing marketing campaigns, sales strategies, and customer service processes. Companies can align these elements to create an extremely loyal customer base, create memorable experiences and enjoy increased customer satisfaction. The visual underscores Salesforce's leading role in utilising IoT, AI, Big data technologies to build a complete and meaningful CRM framework. The image shows each icon is a vital component in modern CRM operations that benefit from its use, making integrating CRM technology into customer experience management a multifarious advantage. To that end, the image serves to help separate Salesforce's role from the technological ecosystem necessary for it to perform its job; thus, the image is a useful contribution to the discussion on the future of CRM practices.



## II. OVERVIEW OF TECHNOLOGIES

### 2.1. Internet of Things (IoT)

The Internet of Things (IoT) is a dynamic, inclusive ecosystem combining sensors, software and embedded communication technology in physical devices through which everything on the earth becomes a potential digital thing. These devices are used to automate and monitor data collection in real time and to enhance operational efficiency. [6-8] There are many IoT applications, such as smart homes, wearables, industrial systems, and healthcare devices. Using IoT, businesses can track customer interactions, product use and environmental conditions and deliver tailored experiences and proactive solutions.

Key protocols run on IoT, which are Internet Protocol (IP) and Transmission Control Protocol (TCP), are used to ensure they work seamlessly between all devices. Wi-Fi, Bluetooth, 5G and other technologies enable data exchange and contribute to innovations such as connected vehicles, smart cities, and predictive maintenance systems. In IoT-enabled smart home devices, lighting temperature is adjusted according to user preference, and industrial IoT solutions improve production efficiency by monitoring equipment health in real time. IoT adoption has grown by leaps and bounds in recent years, largely thanks to connectivity and advancements in AI integration. In other words, artificial intelligence processes IoT-generated data in real time to make better decisions. While their nature and advantages make IoT attractive, the data security vulnerabilities and privacy concerns burden its adoption. Organizations that embrace IoT continue to protect sensitive data, ensure device interoperability, and address ethical considerations at the top of the priority list.

### 2.2. Artificial Intelligence (AI)

Artificial Intelligence (AI) spans various technologies that allow machines to perform like intelligent humans. Machine learning, natural language processing and predictive analytics have become de rigueur necessities of modern AI-powered business operations. AI is to automation as automation is to you; it's to automation what automation is to you. AI is key to the Salesforce ecosystem, and tools like Einstein AI are used for predictive analytics, automation, and sentiment analysis.

For example, Salesforce Einstein can pick the leads based on their conversion chances and ensure the sellers focus on first-class bait. Instant replies to customer questions are increasingly becoming widely adopted applications in the form of AI-powered chatbots that reduce response time and enhance satisfaction. Further amplification of both technologies' potential is brought about when AI and IoT (AIoT) are integrated. Real time AI processes IoT data to drive intelligent automation, e.g. energy usage optimized in smart homes or downtime anticipated in manufacturing. Yet, the implementation of AI needs to handle ethical concerns such as algorithmic bias, data transparency, etc., to achieve fairness and gain customer trust.

### 2.3. Big Data

Structured and unstructured data generated at high velocity from various sources such as IoT devices, social media platforms, and transactional systems is known as Big Data. Organizations analyze and process this data to find actionable insights, optimize operations [9-11], and improve customer experiences. Big Data volume, velocity and variety point to its potential to deliver transformative business insights based on these three defining characteristics. According to Salesforce, Big Data integration in Salesforce allows you to advance decision-making by increasing access to advanced analytics and tools that process customer interactions, purchasing behaviors, market trends, etc. Big Data is used for that, too.

Companies can use this information to segment their audience for targeted marketing campaigns or predict customer churn by examining the historical record of their behavior. Data processing today is further revolutionized by the rise of AI-powered Big Data Analytics, which enables them to extract deeper insights on different parameters and make real time decisions with a specific objective. It offers many perks, but managing that Big Data is not easy; it is about data quality, storage and GDPR compliance, for example. Big Data brings enormous value to organizations that have adopted robust frameworks for data governance and ensure they only engage in ethical data practices.

### 2.4. Salesforce Platform

Salesforce Platform is a leading CRM powered by advanced IoT, AI, and Big Data interaction to serve customers and make your business more efficient. An interaction hub, it is responsible for all customer channels: sales, marketing, service & commerce. Enterprise from Salesforce offers customers predictive insights and automation to further



optimize their interactions with customers with one of the greatest features of Einstein AI. Imagine Einstein suggesting how to optimize your marketing based on your customers, predicting future customer needs, and analyzing customer data to make those recommendations. Even more, the real time data from the connected devices on the platform’s IoT Cloud is processed and used by businesses to monitor product usage, respond to anomalies and provide proactive service. With Big Data integration in Salesforce, businesses can mix sophisticated analytics and data visualization kits like Tableau to take informed decisions. On top of that, Salesforce’s AppExchange marketplace is full of 3rd party apps that give every industry added scalability and customizeability. As other organizations look to transform digitally, Salesforce continues to innovate by blending newer emerging technologies and partnerships in their solutions. From this holistic view of CRM, businesses can actually achieve greater control over the customer experience, keep operations streamlined and boost its business in difficult market conditions.

### III. INTEGRATION OF IOT, AI, AND BIG DATA IN SALESFORCE

#### 3.1. Architectural Framework

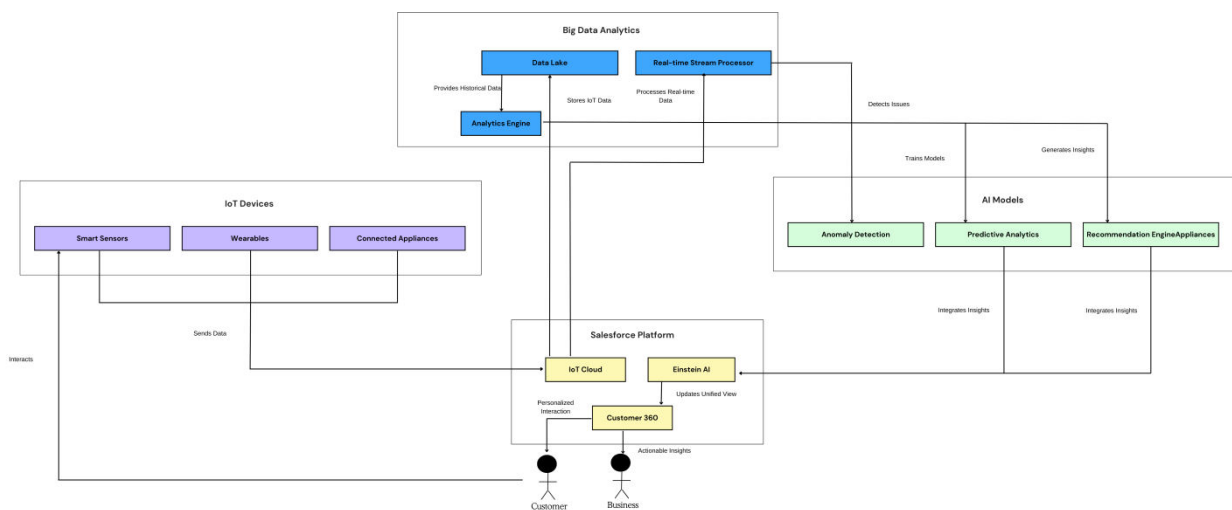


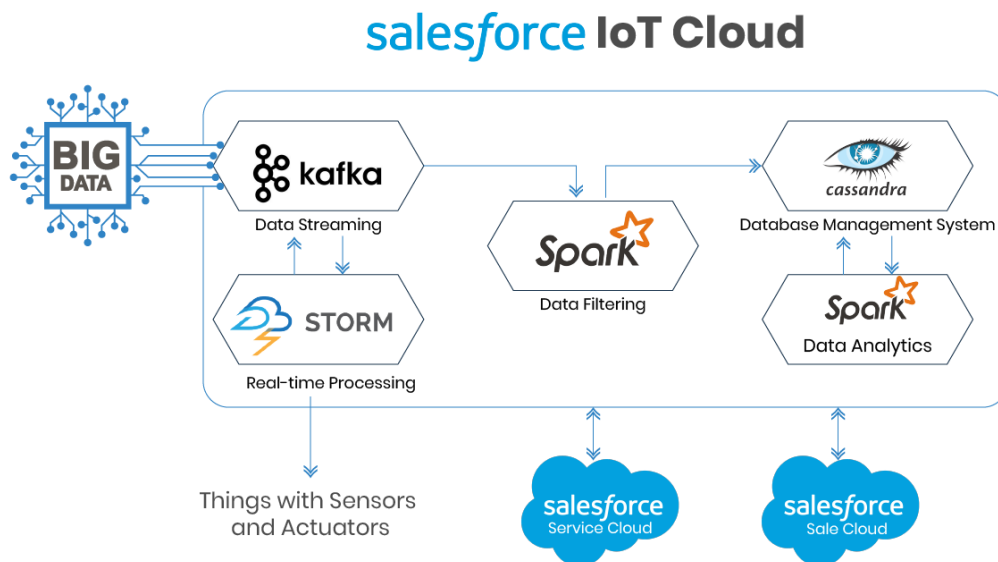
Figure 2: Architectural Framework

It shows a holistic architecture with IoT devices, Big Data Analytics, AI models on top of the Salesforce platform for better customer relation management. It really boils down to how data moves from IoT-enabled things like smart sensors, wearables, connected appliances, and so on to the Salesforce IoT Cloud. These devices are the primary touch point for capturing [12-15] customer interaction data, thereby enabling real time insight into user behavior and preferences.

When data is collected, the Salesforce IoT Cloud is the processing hub. Then, the information is sent through Big Data Analytics components, which include data lakes and real-time stream processors. Historical and real time data are analyzed in these systems, and insights are provided for AI model training. In addition to their predictive analytics, recommendation engines and anomaly detection systems, the AI models refine this data to surface trends, personalize customer experiences and spot possible problems. The integrated, processed insights are dropped into Salesforce Einstein AI to do just that: enhance the unified customer profile through the Customer 360 platform. It enables companies to build actionable profiles and provide personalized customer interaction. Their ease of integration underscores the importance of AI and Big Data in creating intelligent CRM platforms driven by intelligent systems that can adapt to customer needs. However, this architecture enfoldes how the different technological components combine to deliver a robust customer experience. The visual covering of the end-to-end process, which begins with data collection via IoT devices to insights actionable for business on the Salesforce platform, showcases its central role in the digital transformation of CRM practices. It complements the text explanation in visualisations, helping to understand the “routes” of some of the most complex technical processes by readers.

### 3.2. Salesforce IoT Cloud Architectural

Figure 3: Salesforce IoT Cloud Architectural



The image represents the Salesforce IoT Cloud Architectural Framework that outlines how IoT data moves through different components before it is brought into Salesforce CRM solutions like Salesforce Service Cloud and Salesforce Sales Cloud. Initially, [16-18] it starts from censored and controlled IoT devices producing massive spatiotemporal data streams. Kafka becomes a distributed message system that takes this data in and transmits it more efficiently. Real time tools like Apache Storm process the incoming data and Apache Spark does data computation quickly. These tools support real-time analytics and decision-making so that an organization can stay well-placed and act fast on the insights attained from IoT devices. An example is that an anomaly in an industrial sensor may send an automated maintenance alert to Salesforce.

The data is processed and stored in Apache Cassandra, a highly scalable NoSQL database. Cassandra allows data from thousands of IoT sensors to be collected while keeping speed and reliability. Finally, further mashing up this data uses Spark's analytics capabilities to provide actionable insights easily integrated into the Salesforce Service Cloud and Sales Cloud. However, this integration allows businesses to personalise customer experiences and predictive services without linking the IoT data to customer relationship management. From an overall perspective, this image describes the full life cycle of IoT data inside Salesforce's ecosystem, from raw inputs to actionable insights. Still, it maintains the scale and real time responsiveness. Understanding how Salesforce utilizes IoT, Big Data, and AI technologies is critical to providing businesses with innovative CRM Prowess in this visual image.

### 3.3. Use cases

#### 3.3.1. Personalized Customer Experiences

And when IoT, AI, Big Data are integrated into Salesforce help businesses deliver highly personalized customer experiences. Deep real time data from IoT devices such as wearables of smart appliances can offer deep insights around customer preferences, habits and interactions. For instance, a fitness brand that uses wearables can have the information collected by attaching connected devices. This means that the company can integrate this data into Salesforce, with access to the user's profile through integration with Facebook, and then provide personalised fitness plans or other such nutrition advice relevant and in line with the customer's goals. If smart home data was also made available for further targeted marketing campaigns, recommendations for energy saving appliances could be sent based on patterns of use. Einstein AI of Salesforce goes to a further level with personalization by analyzing real time historical data. This 360 degree view into the customer journey lets you begin to foresee customer needs and act upon them before they even



arise. For example, the predictive analytics tells your customers what products they'll need, you replace them before they even show any signs of wear and tear, and you build trust and customer loyalty. An increasingly personalized marketplace leaves organisations with little room for error and forces them to improve their communication and provide services to better serve their customers while increasing customer satisfaction and building a long lasting engagement to gain a competitive advantage.

### 3.3.2. Predictive Analytics and Proactive Engagement

Using AI and IoT integration, predictive analytics are the driver for predictive analytics, changing the customer engagement strategy from reactive to proactive. Continuous monitoring of conditions and dispatching data to Salesforce allow businesses to foresee potential issues before they happen. IoT sensors embedded inside machinery can alert you when you suspect that your machinery is beginning to wear or may experience a failure. Using this data, predictive models enable maintenance alerts triggered in Salesforce to reduce downtime and avoid costly repairs. In the same way, retailers can predict when to purchase stock based on purchasing trends observed on connected devices so that stock will be available when customers need it. It also helps build up customer relationships. By helping companies understand when customers may need to be reached (for example, remind them about subscription renewals or offer discounts on frequently bought items), machine learning allows companies to know in advance and plan properly. This approach is not only geared at improving operational efficiency but also intended to show how the brand fulfils customer needs as a means of creating brand loyalty.

### 3.3.3. Enhanced Decision-Making for Businesses

Salesforce can easily integrate IoT, AI, and Big Data to help companies make better decisions at all levels of the organization. Businesses can make well-informed strategic and operational decisions with real-time insights from connected devices and predictive analytics. One example is how marketing teams can study customer data to establish new trends and design compelling campaigns to speak to their audience. The usage data from IoT devices can be used by sales teams to prioritize high potential leads, and by service teams to engage faster in maintenance alerts.

Data from IoT sensors enables businesses to optimize resource allocation operationally. In the example, manufacturing schedules are adjusted in real time based on equipment availability and performance data. Furthermore, cross-departmental collaboration is better served as teams can access shared insights from Salesforce. It combines IoT, AI, and Big Data to help businesses be agile, responsive, and customer-focused. This integration accelerates innovation, optimizes processes, and keeps organisations competitive in a data-driven marketplace.

## IV. CHALLENGES AND SOLUTIONS

### 4.1. Technical Challenges

As IoT, AI, and Big Data become an integral part of Salesforce, there are some technical hurdles that businesses have to jump through to make the system work as expected without any scalability issues.

Data processing and storage are two of the most fundamental issues. IoT devices generate constant data streams in real time, so the infrastructure needed to support high-velocity streams should be robust. Traditional systems are often unable to scale effectively, leading to data bottlenecks and latency issues. Secondly, data integration from various sources, such as sensors, devices, and third party platforms, is usually complicated by data format and protocol differences. [19,20] System interoperability is another critical challenge. Multiple technologies and the absence of existing solutions require organizations to rely on how the system works with the Salesforce ecosystem. Achieving smooth interaction between these systems without compromising performance and functionality is a significant hurdle. And they worry about cybersecurity threats. With the ongoing work from home, IoT devices are always connected to networks; hence, they are on the attack surface of a hacker. Lack of good access controls, use of unencrypted communication channels, and poor vulnerability patching can expose sensitive data. Finally, real time analytics and decision making require low latency, but for which high accuracy is imperative and remains a challenge at scale. The cost of the business must also take into consideration the expenses required for the deployment of advanced technologies and the maintenance of the infrastructure for the long run.

### 4.2. Ethical and Privacy Concerns

IoT, AI, and Big Data technologies extend far beyond the enterprise, and there are major ethical and privacy concerns that need to be addressed by organizations to maintain customer trust. Data privacy is one of the most pressing issues. IoT devices collect tons of personal data from user locations and behavioral patterns. Any handling of this data or



unauthorised access by an unauthorized person may result in customer privacy breaches. In addition, organizations do not communicate clearly how they collect and store customer data and use it, leading to doubt around consent. There is another critical ethical concern regarding bias with AI algorithms. If AI models inside of Salesforce become trained on skewed or unrepresentative data, say, if we train a model to detect faces for legal reasons, that becomes essentially training bias in the model, and it could end up making our model unintentionally reinforce existing societal biases. These biases can lead to unfair decision-making, for example, given in the next portion on credit score screening, hiring, and personalized marketing. It should also provide a view of the ethical implications of automation. AI and IoT-driven automation are efficient but can also make the workforce unsustainable as they displace jobs. Responsible businesspeople must find a delicate balance in business. Last, there are surveillance issues in which IoT things continuously monitor and trace user activities. They may see this as an Invasion of their personal Space and Stop buying from them or may test the Trust with them.

### 4.3. Proposed Solutions

Integration IoT, AI, and Big Data in Salesforce: We need to innovate on the technologies and develop strategic policies to address such integration's technical, ethical, and privacy challenges. Organizations to solve data processing and storage issues can adopt scalable, capable cloud services such as Salesforce IoT Cloud and advanced distributed databases like Apache Cassandra. In this case, you can also leverage edge computing because it can reduce latency by performing the data processing closer to the source point, enabling real-time analytics. To work together, businesses need their shared data formats and protocols standardized while using solutions like MuleSoft. These tools help you easily integrate disparate systems and Salesforce, increasing communication and functionality.

Cybersecurity must be strengthened. Organizations should set up a fully secured system by deploying IoT-specific security, undertaking regular vulnerability assessments, and implementing robust encryption protocols. Moving to a Zero Trust Security model, you can use it to ensure every access request gets checked and authenticated. Through transparency, businesses must communicate clearly with customers about what data was collected and how it was used. People who want to ensure that customer data is always protected will implement privacy by design principles. Through regular audits of the AI models themselves (which lead to the finding of biases) and employee upskilling programs, the workforce can be empowered with AI automation that reduces the burden of manual labour. Organizations can help alleviate surveillance blur by equipping customers with granular control of their data using user friendly interfaces and consent mechanisms. This way promotes trust and monitors the laws that protect data.

## V. FUTURE TRENDS AND OPPORTUNITIES

### 5.1. Advanced AI Algorithms

In the ever-changing landscape of technology, conventional methods are about to be overpowered by a new, rapid evolution of advanced AI algorithms that promise to change how businesses harness data in making decisions. However, as AI algorithms become smarter, they will deepen the predictive, prescriptive and generative powers of platforms like Salesforce, allowing businesses to discover deeper insights and automate more complex processes. The second important trend is the advancement in deep learning techniques. Inspired by how the human brain stores, manipulates and remembers information in its neural networks, these algorithms can harness unstructured data like words, images, and videos at unsurpassed levels of accuracy. In other words, this could be advanced Natural Language Processing (NLP) that makes customer interactions more natural and alive through AI-enabled chatbots and voice assistants in Salesforce. Reinforcement learning is another I/O key development; in reinforcement learning, AI is learning as it interacts with the environment and receives feedback. Now this technique is particularly suited to dynamic decision making in industry like retail, where customer preferences and market trends change rapidly. Reinforcement learning could be used by Salesforce to update marketing campaigns in real time or make product offerings recommendations in real time.

A large language model is generative AI (although it is also rife with opportunities [frightening risks]) making it so cool and yet so dangerous. These models help businesses create great content, automate report generation, and even generate marketing copy. Generative AI can also be integrated into Salesforce: It could also help to streamline the creation of content for campaigns or to generate dynamic proposals based upon a certain customer's context. Finally, we will see advances in both AI ethics and fairness. Built-in safeguards will be included later on making the biases as transparent as possible. This focus will be important for retaining customer trust and will be important for complying with international regulatory standards. The gist of it is that AI algorithms will continue to become better so that





businesses can perform more precise data driven, better customer experiences and more efficient operations, all of which will benefit and become an integral part of digital transformation.

### 5.2. Evolving IoT Ecosystem

The Internet of Things ecosystem is dynamic in which devices, connectivity standards, and emerging applications continuously reshape the involvement of industries and their impact on the consumers' realities. The future of IoT will be based on enhanced interoperability, enhanced energy efficiency and higher integration with emerging technologies. One of the key trends is moving toward edge computing within the world of IoT. Now that devices are becoming more connected, latency and responsiveness increase as they process data at the level of the device itself or nearby edge nodes. This would allow real time analytics on IoT data, such as monitoring industrial equipment or consumer behavior in physical stores for businesses on Salesforce. A game changer is the introduction of 6G technology that brings ultra-low latency and way faster than 5G. The result of this advancement will help billions of devices in the IoT ecosystem to run applications from autonomous vehicles to smart cities to industrial automation. For instance, Salesforce could use 6G IoT data streams to optimize supply chains or improve customer service through predictive maintenance alerts.

The future of IoT also includes sustainable consciousness. Energy-saving devices are the priority for manufacturers, and the circular economy principle is followed to reduce e-waste. As with the global trend towards carbon neutrality, IoT ecosystems will continue to be powered by renewable energy sources and energy harvesters. Furthermore, its worth will increase as IoT merges with AI and Big Data. Storage and analysis in big data platform will scale, AI algorithms will process the IoT data to generate impactful insight. With this integration, businesses get to predict customers' needs, design better products and improve operations. As organizations move to the increasingly connected IoT ecosystem, the opportunity to close the loop, become more sustainable and go from smarter to more efficient systems grows. More platforms like Salesforce will continue to drive more innovation and business growth with IoT.

### 5.3. Role of Blockchain and Cybersecurity

As the intersection of technology landscapes increase, blockchain and cybersecurity proves invaluable in maintaining its security, transparency and efficiency. They enable the solving of wide range of problems from data breach to lesser trust on digital transactions. Blockchain technology offers a decentralized and unalterable record of data with integral data and transparency. In Salesforce, the easiest thing to do is to create immutable audit trails for transactions to ensure no tampering with customer interactions or data exchange. If you have an industry like finance or healthcare, then this is a very important feature as regulatory compliance and data integrity are must to do things.

In addition, by automating agreements and eliminating intermediaries, the blockchain technology in smart contracts in business will significantly cut the costs of doing business and reduce the business operational process. For instance, Salesforce combined with blockchain might be used to manage the entire and fully automated service level agreement (SLA) and supply chain management process to be completely transparent. Its decentralized nature, which doesn't allow for a single point of failure, makes it a good solution when the issue is to protect IoT network. With blockchain and IoT, businesses could secure device identity and encryption during data transfer between devices. As IoT ecosystems grow as large and exposed to cyber attacks this capability is necessary.

Another trend worth noting is the adoption of AI-driven cybersecurity solutions. Network traffic patterns provide several indications when something is amiss that the AI algorithms can interpret and respond to in real time. These solutions will be fully integrated with Salesforce to protect sensitive customer data better and help it comply with evolving regulations such as GDPR and CCPA. The latter point is that the growing importance of quantum-resistant cryptography cannot be understated. Investment in using quantum computing will become increasingly profitable as traditional encryption methods become no more. To prove their systems in the future, businesses will have to adopt quantum-safe protocols to protect them against the potential threat of a future attack.

## VI. CONCLUSION

However, integrating IoT, AI and Big Data into our own platforms, Salesforce, is the leap towards the new platform for businesses that want to become an example of the kind of business thriving in increasing data dependent times. Using these technologies organizations can uncover hidden gems of information, automate boring processes, and more effectively create personalised, powerful, and easy to use customer experiences. Together with powerful AI algorithms on large datasets, businesses can apply real-time data streams from their IoT devices, use accordingly actual data streams from IoT devices, and do so efficiently in order to overcome the gap between operational inefficiencies and a lack of power while optimizing decisions, boosting long term customer loyalty. While this potential for transformation



is out there, it isn't risk free. However, there are technical hurdles, such as managing the volume of data, and ethical hurdle such as privacy and a security of data, around which organizations must have a good routine to handle the risks. Similarly, blockchain can be used by businesses to securely handle data and be able to utilize AI based cybersecurity system and fair data governance policies to develop equally innovative and accountable digital ecosystem.

The convergence of emerging technologies such as advanced AI algorithms, IoT ecosystem evolution, and blockchain innovations looks forward to opening new opportunities. The future awaits us with possibilities of driving efficiency and innovation in various fields stemming from quantum-safe cryptography, edge computing, and 6 G-enabled connectivity to AI ethics frameworks. Changes are happening rapidly in the industry, and businesses that adopt the above-mentioned trends and strengthen their capacity to upskill their workforce to handle and adapt to these technologies will outpace their competitors. Finally, let's conclude that the future of digital transformation is a mix of IoT, AI, and Big Data embedded in platforms like Salesforce. Suppose businesses tap into these technologies by heading off challenges by embracing technologies and ethics. In that case, businesses can harness these technologies to help them grow sustainably, improve innovation, and provide customer value. However, the path forward is both exciting and difficult, and the rewards to those who find their way effectively will be profound.

## REFERENCES

1. Lipkin, M. (2016). Customer experience formation in today's service landscape. *Journal of Service Management*, 27(5), 678-703.
2. Homburg, C., Jozić, D., & Kuehnl, C. (2017). Customer experience management: toward implementing an evolving marketing concept. *Journal of the Academy of Marketing Science*, 45, 377-401.
3. Kahn, B. E., Inman, J. J., & Verhoef, P. C. (2018). Introduction to special issue: Consumer response to the evolving retailing landscape. *Journal of the Association for Consumer Research*, 3(3), 255-259.
4. Reddy, S. R. B. (2021). Predictive Analytics in Customer Relationship Management: Utilizing Big Data and AI to Drive Personalized Marketing Strategies. *Australian Journal of Machine Learning Research & Applications*, 1(1), 1-12.
5. Improving CRM Practices with Salesforce IoT Cloud, oodles, online. <https://erpsolutions.oodles.io/blog/salesforce-iot-cloud/>
6. Erevelles, S., Fukawa, N., & Swayne, L. (2016). Big Data consumer analytics and the transformation of marketing. *Journal of business research*, 69(2), 897-904.
7. Internet of Things, Britannica, online. <https://www.britannica.com/science/Internet-of-Things>
8. Ikeda, E. K., da Silva, L. F., Penha, R., & de Oliveira, P. S. G. (2021). The relationship between the Internet of Things and knowledge management in smart ecosystem development. *Knowledge and Process Management*, 28(2), 181-194.
9. What Is IoT (Internet of Things)?, Cisco, online. <https://www.cisco.com/c/en/us/solutions/internet-of-things/what-is-iot.html>
10. Jaakkola, H., Henno, J., Mäkelä, J., & Thalheim, B. (2019, May). Artificial intelligence yesterday, today and tomorrow. In 2019 42nd International Convention on Information and Communication Technology, Electronics and Microelectronics (MIPRO) (pp. 860-867). IEEE.
11. Knud Lasse Lueth, IoT 2021 in review: The 10 Most Relevant IoT Developments of the Year, iot-analytics, online. <https://iot-analytics.com/iot-2021-in-review/>
12. What is Internet of Things (IoT)? Sap, online. <https://www.sap.com/products/artificial-intelligence/what-is-iot.html>
13. Niu, Y., Ying, L., Yang, J., Bao, M., & Sivaparthipan, C. B. (2021). Organizational business intelligence and decision making using big data analytics. *Information Processing & Management*, 58(6), 102725.
14. Salesforce IoT Integration: Smart Decision-Making with IoT, itechcloudsolution, online. <https://www.itechcloudsolution.com/blogs/salesforce-iot-integration/>
15. Salesforce IoT Cloud: What is it?, IQRA Technology, online. <https://iqratechnology.com/blogs/connecting-modern-iot-devices-to-salesforce/>
16. Salesforce and IoT: The Future of Customer Relationship Management, Klouddata, online. <https://www.klouddata.com/salesforce-blogs/salesforce-and-iot-the-future-of-customer-relationship-management>
17. Bansal, P., Panchal, R., Bassi, S., & Kumar, A. (2020, April). Blockchain for cybersecurity: A comprehensive survey. In 2020 IEEE 9th International Conference on Communication Systems and Network Technologies (CSNT) (pp. 260-265). IEEE.
18. Definition internet of things (IoT), Techtargget, online. <https://www.techtargget.com/iotagenda/definition/Internet-of-Things-IoT>
19. Kshetri, N. (2017). Blockchain's roles in strengthening cybersecurity and protecting privacy. *Telecommunications policy*, 41(10), 1027-1038.
20. Bilgeri, N. (2020). Artificial intelligence improving CRM, sales and customer experience: An analysis of an international B2B company (Doctoral dissertation, FH Vorarlberg (Fachhochschule Vorarlberg)).



**INNO SPACE**  
SJIF Scientific Journal Impact Factor  
**Impact Factor: 8.423**



**ISSN** INTERNATIONAL  
STANDARD  
SERIAL  
NUMBER  
INDIA



# INTERNATIONAL JOURNAL OF INNOVATIVE RESEARCH

IN SCIENCE | ENGINEERING | TECHNOLOGY

**9940 572 462** **6381 907 438** **ijirset@gmail.com**



[www.ijirset.com](http://www.ijirset.com)

Scan to save the contact details