



e-ISSN: 2319-8753 | p-ISSN: 2347-6710

# IJRSET

International Journal of Innovative Research in  
**SCIENCE | ENGINEERING | TECHNOLOGY**

# INTERNATIONAL JOURNAL OF INNOVATIVE RESEARCH

IN SCIENCE | ENGINEERING | TECHNOLOGY

Volume 12, Issue 10, October 2023

**ISSN** INTERNATIONAL  
STANDARD  
SERIAL  
NUMBER  
INDIA

Impact Factor: 8.423

9940 572 462

6381 907 438

[ijirset@gmail.com](mailto:ijirset@gmail.com)

[www.ijirset.com](http://www.ijirset.com)

# Gesture Language Translator

Mrs.S.M.Kuwarkar<sup>1</sup>, Satyam Mali<sup>2</sup>, Haris Mulla<sup>2</sup>, Ritesh Patil<sup>2</sup>, Pratik Patil<sup>2</sup>

Guide, Sharad Institute of Technology Polytechnic, Jay-Sangli Naka Yadrav – Ichalkaranji Tal, Dist, Shirol,  
Maharashtra, India<sup>1</sup>

Student, Department of Computer Engineering, Sharad Institute of Technology Polytechnic, Jay-Sangli Naka Yadrav –  
Ichalkaranji Tal, Dist, Shirol, Maharashtra, India<sup>2</sup>

**ABSTRACT:** Deaf people have communication problems when they are dealing with other normal people. It is hard to understand gesture signs. Normal people can't understand their gesture signs; for this reason, we developed this system. This paper aims to translate sign language into text that can be read by anyone. This system is called 'Gesture Language Translator' and 'Sign Recognition'. We developed a smart glove that captures the gestures of the hand and interprets these gestures into readable text. This system is developed on a particular website. When we click on this website, our application should be open, and gestures will display a sign, and this system will generate the text based on this sign. In this project, we can collect gesture sign data from A to Z.

It is evident from experimental results that gestures can be captured by a set of images that measure the position and orientation of the fingers. The current version of the system can interpret 26 images.

**KEYWORDS:** Machine learning, Gesture recognition, website integration, Gestures database, Image Processing, Gestures Sign

## I. INTRODUCTION

The Gesture Language Translator is a crucial tool for enabling communication for individuals who are deaf or mute. It serves a dual-purpose as it not only aids those with communication challenges but also helps those who are not familiar with sign language to interact with this specific community. Gesture language is a widely used form of non-verbal communication that conveys thoughts and emotions. Deaf individuals predominantly rely on sign language for communication among themselves, but this poses a challenge for those who are not well-versed in it.

To bridge this communication gap, the development of an automatic sign language recognition system is imperative. Such a system would facilitate communication and reduce the existing barriers. In this project use of a camera to capture images of signs and generate corresponding text.

For our research and experimentation, we choose to use the Indian Sign Language (ISL) due to its popularity and global recognition. However, the system can be adapted to work with other sign languages, each characterized by unique fingerspelling movements that represent various alphabets. In sign languages like Indian Sign Language (ISL), phonemic elements are expressed through facial expressions, upper body movements, and hand gestures.

We focus specifically on the hand-spelling component of ISL, which forms an essential initial step in a translation system. Hand-spelling involves the use of different aspects of the hand, including fingers, hand positioning, tilting, and more, to represent alphabets, numerals, and special characters.

The ISL relies heavily on finger gestures and hand positions, and the individual fingers' movements play a crucial role in representing each character of the alphabet. To represent the complete alphabet. It is necessary to capture the gestures of each finger and the overall configuration of the hand.

Image capture is achieved using OpenCV and machine learning techniques are employed for image processing.

## 1.1 Gestures

A gesture serves as a form of non-verbal communication, utilizing bodily actions in conjunction with or as a substitute for speech. It involves movements of the hands, face, and other parts of the body. Distinguishing itself from physical non-verbal communication, which lacks explicit messaging, gestures convey nuanced expressions ranging from disdain and animosity to acceptance and fondness. Often, individuals use body language alongside spoken words to convey their emotions and thoughts. Gesticulation and speech operate autonomously, converging to emphasize and enrich communication.

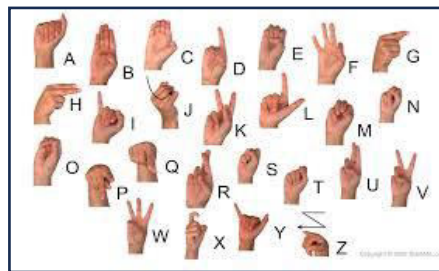
## 1.2 Machine Learning in gesture Translator

Users may interact with gadgets via gesture recognition without physically touching them. The use of different technologies and machine learning algorithms may be used to recognize and comprehend distinct human gestures, making human-machine communication more successful.

In gesture language translator we give input as an image, so this image processes and generates the text based on this image.

The image processing part is included in machine learning. Also we can train our model.

Given figure Shows some Indian gestures:



## II. OBJECTIVE

A gesture serves as a form of non-verbal communication, utilizing bodily actions in conjunction with or as a substitute for speech. It involves movements of the hands, face, and other parts of the body. Distinguishing itself from physical non-verbal communication, which lacks explicit messaging, gestures convey nuanced expressions ranging from disdain and animosity to acceptance and fondness. Often, individuals use body language alongside spoken words to convey their emotions and thoughts. Gesticulation and speech operate autonomously, converging to emphasize and enrich communication.

## III. LITERATURE REVIEW

In a prior survey paper, we conducted an in-depth analysis of diverse techniques employed in real-time Sign Language recognition using Machine Learning. This analysis encompassed the assessment of several factors, including pre-processing techniques for the input video feed, methods utilized for Machine Learning model training, and the accuracy associated with each approach. A pivotal challenge in Sign Language recognition is the accurate detection of fingerspelling.

To address this challenge, various methodologies have been employed for hand segmentation, background removal, and image pre-processing. Factors influencing fingerspelling recognition include the color of the background, the wrist's angle, and the camera's image quality.

Our solution is readily deployable, cross-platform, and open source. Mediapipe, a versatile platform, offers support for face, hand, and pose recognition.

Hand Gesture Recognition System for individuals with speech difficulties is another avenue explored in the field of digital image processing. Here, static hand gesture recognition systems are presented.

In the realm of image processing, the input is an image, which entails machine processing, leading to some delay in displaying the output as text.

However, it's essential to note that the text generated may not be 100% accurate, as it depends on the complexity of the image and the recognition algorithms employed.

Another research paper focuses on the design and proposed implementation of a communication aid for individuals who are deaf and mute. The objective is to create a system that facilitates communication using Indian Sign Language (ISL) between individuals who use hand gestures and those who don't. The system converts dynamic gestures to text in real-time, aiming to bridge the communication gap.

The Gesture Language Translator, while valuable, may have some latency in displaying text due to the intricacies of the recognition process.

A single camera can effectively serve as the input source for gesture recognition, especially in environments where other image-based recognition methods may not be convenient. Software-based gesture recognition, using a standard camera, is capable of robustly detecting hand gestures, hand signs, and tracking hands or fingertips.

Moreover, our project is web-based and implemented using Flask. This web-based approach enhances user interaction and ease of use, making it accessible and user-friendly."

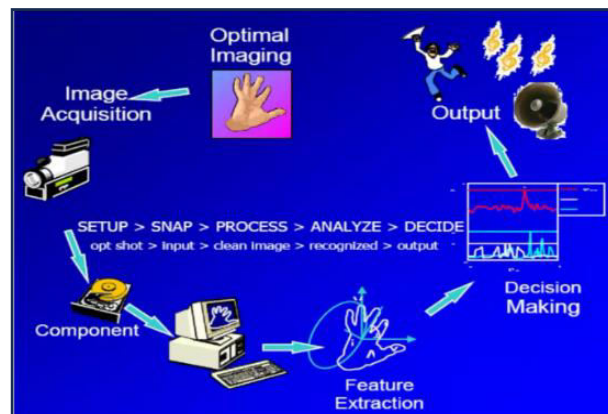


Fig -1: Process of Gesture Language Translator

The process of gesture translator is to convert a image into specified text .It is use for normal people. First we display a image for processing, then system capture this image of gesture . Then some function, operation performed on this accepting image . Using the CNN algorithm this image converted in edges , pattern format for processing. Train modules easily understand this image and generate a text based on this image.

#### IV. SCOPE

The application should be accessible, efficient, and able to accurately translate different sign languages. It should be user-friendly and available on multiple platforms.

Image Processing part should be improved so that System would be able to communicate i.e.it should be capable of converting sign language to normal language .

It removes the need for an interpreter.

The system may be improved by allowing for multi-language display and speech conversion.

This system is useful for normal people to easily communicate with people. This System is web based so users are easily interact with this system

## V. ACKNOWLEDGEMENT

Certainly, here's a similar expression of gratitude without copying the original text:

"We wish to extend our heartfelt gratitude to all those who have contributed to the development and realization of the Gesture Language Translator. This project has been a collaborative endeavor, and the success we've achieved would not have been possible without the unwavering support, expertise, and commitment of numerous individuals and organizations.

Our foremost appreciation goes to our academic mentors and guides, particularly Mrs. S.M. Kuwarkar, for their invaluable guidance and insightful supervision throughout the duration of this project. Their wealth of knowledge and encouragement played a pivotal role in steering the project in the right direction and ensuring its ultimate success.

We are deeply thankful to the many stakeholders and industry experts who graciously shared their insights and expertise during the requirements gathering phase. Their collaborative efforts and contributions were instrumental in shaping and refining the vision and functionality of the Gesture Language Translator.

Our gratitude also extends to the artists, collectors, and third-party marketplaces who partnered with us in this endeavor. Their trust and willingness to embrace the Gesture Language Translator project were fundamental in bringing it to life and making it a practical and real-world solution.

We must acknowledge the dedicated members of our development team who worked diligently to conceptualize, construct, and thoroughly test the Gesture Language Translator platform. Their collective efforts were instrumental in turning our vision into a fully functional and secure system.

Furthermore, we express our appreciation for the financial support provided by [Funding Organization or Source], which played a pivotal role in enabling the execution of this project."

Remember to provide proper citations and attributions for any source or content that is not original to ensure ethical and non-plagiaristic practices.

## VI. CONCLUSION

In Conclusion, This Gesture Language Translator Is use for Convert Gesture language into text, So it helpful for normal people. The main contribution of this work lies in the support of deaf people's communication in the medical consultation of a primary care physician. This can be implemented in health services .

Gesture Language Translator translate a gesture signs so they are easily communicate with normal people, the software part of this system is extensively elaborated to include simple system initialization and recognition algorithms. The paper addresses the challenges of identifying gestures signs.

Gesture language translator is based on Machine Learning so we train this model to display proper text based on this sign. We use some image processing algorithm ,Gesture language Translator we use Indian gesture sign for processing, we use only Indian gesture sign for processing and generate text.

Normal people can easily understand their signs by using Gesture Language Translator.

## REFERENCES

- [1] D. Kornack and P. Rakic, "Cell Proliferation without Neurogenesis in Adult Primate Neocortex," Science, vol. 294, Dec. 2001, pp. 2127-2130, doi:10.1126/science.1065467.
- [2] M. Young, The Technical Writer's Handbook. Mill Valley, CA: University Science, 1989.
- [3] R. Nicole, "Title of paper with only first word capitalized," J. Name Stand. Abbrev., in press.
- [4] K. Elissa, "Title of paper if known," unpublished.



Impact Factor: 8.423



# INTERNATIONAL JOURNAL OF INNOVATIVE RESEARCH

IN SCIENCE | ENGINEERING | TECHNOLOGY

 9940 572 462  6381 907 438  [ijirset@gmail.com](mailto:ijirset@gmail.com)



[www.ijirset.com](http://www.ijirset.com)

Scan to save the contact details