



e-ISSN: 2319-8753 | p-ISSN: 2347-6710

# IJRSET

International Journal of Innovative Research in  
**SCIENCE | ENGINEERING | TECHNOLOGY**

# INTERNATIONAL JOURNAL OF INNOVATIVE RESEARCH

IN SCIENCE | ENGINEERING | TECHNOLOGY

Volume 13, Issue 4, April 2024

**ISSN** INTERNATIONAL  
STANDARD  
SERIAL  
NUMBER  
INDIA

Impact Factor: 8.423

9940 572 462

6381 907 438

[ijirset@gmail.com](mailto:ijirset@gmail.com)

[www.ijirset.com](http://www.ijirset.com)

# Identifying Soil Erosion Processes on Aerial Imagery

Prof. Gangamma Hediya<sup>1</sup>, Prof. Kaveri C<sup>2</sup>, Kamal Raj Revankar<sup>3</sup>, Siddarth Gowda<sup>4</sup>, Esha G R<sup>5</sup>,  
Pooja N<sup>6</sup>

Assistant Professor, Dept. of CS&E, Bapuji Institute of Engineering and Technology, Davanagere, Karnataka, India<sup>1</sup>

Assistant Professor, Dept. of CS&E, Bapuji Institute of Engineering and Technology, Davanagere, Karnataka, India<sup>2</sup>

U.G. Student, Dept. of CS&E, Bapuji Institute of Engineering and Technology, Davanagere, Karnataka, India<sup>3</sup>

U.G. Student, Dept. of CS&E, Bapuji Institute of Engineering and Technology, Davanagere, Karnataka, India<sup>4</sup>

U.G. Student, Dept. of CS&E, Bapuji Institute of Engineering and Technology, Davanagere, Karnataka, India<sup>5</sup>

U.G. Student, Dept. of CS&E, Bapuji Institute of Engineering and Technology, Davanagere, Karnataka, India<sup>6</sup>

**ABSTRACT:** Soil erosion is a severe hazard to the environment, affecting land utilization, agriculture, and the overall health of ecosystems. This study proposes a novel method for identifying and highlighting soil erosion regions in aerial photographs. The suggested method locates and labels regions at risk of soil erosion by using image processing techniques to establish an ordered framework for aerial photo inspection. Many sophisticated images processing techniques, including contour analysis, morphological operations, adaptive thresholding, and Gaussian blur, are used in this method. By combining these methods, erosion detection can be done more accurately and effectively, allowing for the identification of weak places over large areas of terrain. This study represents a significant improvement in the field of soil erosion evaluation by providing a sound and scalable approach that has the ability to drastically alter environmental monitoring and management procedures. The developed instrument represents a ray of hope in the ongoing fight against soil degradation and its far-reaching effects because of its unique combination of cutting-edge methodologies, technological insights, and prospective applications.

**KEYWORDS:** Aerial Image, Geographic Information System (GIS), Soil erosion

## I. INTRODUCTION

Soil erosion is a major environmental issue that affects land use, agriculture, and the overall health of ecosystems. Natural ecosystems are disrupted and productive land is lost as a result of the acceleration of soil deterioration caused by human activity through erosion. Identifying areas that are vulnerable to soil erosion is essential for the successful implementation of environmental management and conservation programs.

Soil erosion is a natural occurrence that poses a range of environmental and geomorphologic risks. However, human activities have accelerated this phenomenon, leading to a rate of soil loss that surpasses the rate of formation. The enormous effort of measuring the extent of soil erosion characteristics is nevertheless made more difficult by the dearth of field data on soil erosion. Although soils are a vital resource for supporting human livelihoods, agriculture and the environment are threatened by soil erosion. Approximately 25 to 40 billion tons more sediment are added to the world's soil each year as a result of soil erosion. About 80% of the rise in erosion can be attributed to shifts in land use from agricultural to cropland [1]. Because of increased soil erosion brought on by changes in land use and inadequate land management, the least developed nations experience the highest rates of soil erosion. However, by implementing conservation agriculture, these nations have the greatest potential to reduce soil erosion. To achieve Sustainable Development Goals (SDGs) 1 (end poverty), 2 (zero hunger), and 14 (life below water), an evaluation of soil erosion in arid regions provides information that is crucial.

This work suggests a novel technique for locating and emphasizing areas of soil erosion in aerial photos in response to this urgent problem. The suggested solution creates a methodical framework for the examination of aerial photos by applying cutting edge image processing algorithms. This method increases erosion detection techniques, technological insights, and possible applications, making it a beacon of hope in the ongoing war against soil deterioration and its far-reaching repercussions.

## II. METHODOLOGY

Automatic Identification and Marking of Soil Erosion Regions in Aerial Images We are able to utilize Our procedure makes use of the Python programming language, and well-known libraries like OpenCV and NumPy are integrated into the application to execute the specified steps. Users can easily adjust the program's parameters, like threshold values and contour area thresholds, to fit the specific characteristics of the input image and customize the analysis. Using mage Preprocessing, we may determine to make later processing steps easier, the aerial image is first converted to grayscale. Gaussian blur is used to lower noise and improve the image's overall quality. Additionally, we employ adaptive thresholding. This method uses adaptive thresholding to isolate the soil area from the background while accounting for variations in illumination throughout the image. The binary image is subjected to erosion and dilation techniques in order to improve segmentation even more and get rid of noisy artifacts. Analysis of Contours This method recognizes the contours of related components in the binary image and retains only those with significant regions, efficiently filtering out noise and uninteresting features. The designated erosion zones are filled in with a particular color in order to visually differentiate these places from the surrounding landscape. This final visualization combines the original aerial image with the highlighted erosion locations, making the erosion regions visually striking and easy to interpret. Below figure(1) shows the framework for soil erosion in Aerial Images.

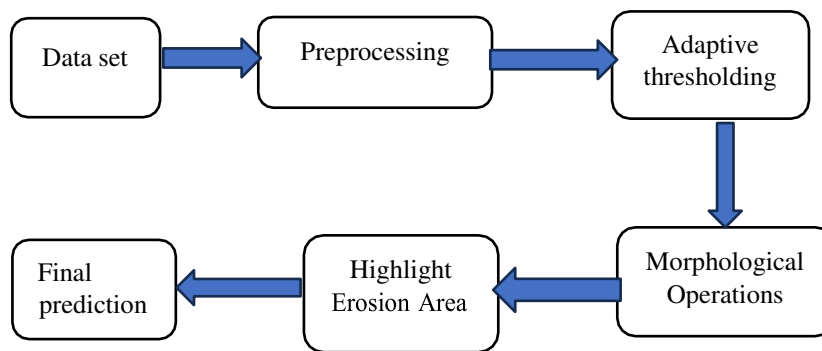


Figure1: The proposed methodology framework for soil erosion in Aerial Images.

### Dataset:

A structured dataset is a group of data that has been collected for a specific purpose and is typically displayed in tabular or organized form. It may include text, pictures, numbers, or information from other sources. The dataset contains aerial images of soil erosion areas.

### Preprocessing:

Load images from dataset After loading the aerial images, prepare them so that the erosion detection model may use them. This entails grayscale image conversion and the use of Gaussian blur to lower noise.

### Adaptive thresholding

By using adaptive thresholding, the threshold for a limited area of the picture is calculated. More flexibility is possible with this strategy when handling images with different levels of illumination. It considers the local neighborhood of each every pixel. and thresholding to segment soil areas from the background.

**Morphological Operations** A group of techniques known as morphological operations are used in image processing to examine and manipulate an image's geometrical structure. By altering pixel values in response to neighboring pixel values, it entails altering the geometric structures of the image. Following thresholding, erosion and dilation are used in soil erosion detection to clean up the binary image, eliminating noise and tiny blobs and ensuring well-defined areas of interest.

### Final prediction

The final prediction is produced by combining the original image with the erosion-highlighted areas following preprocessing, contour detection, and erosion area highlighting.

### III. RESULT ANALYSIS

#### 1. Admin Page:

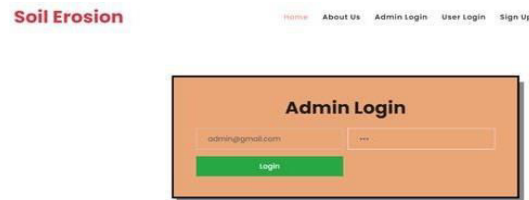


Fig.1.Admin Page

- Admin provide username and password to login system.
- The admin can view and access user registration details.
- Admins can add, edit, or delete soil erosion-related queries.
- Admin also view answer with queries.

#### 2. Upload Images:

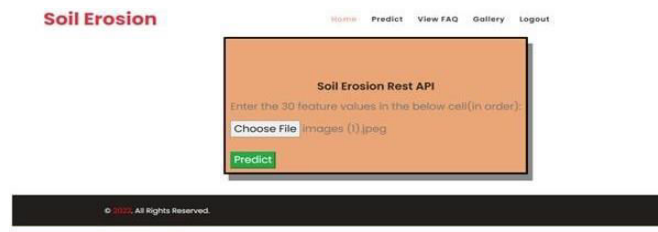


Fig.2.Predict Image

Choose images from the file and upload to system.

**3. Find the soil erosion image.** This page shows produced by combining the original image with the erosion-highlighted areas image preprocessing, contour detection, and erosion area highlighting.

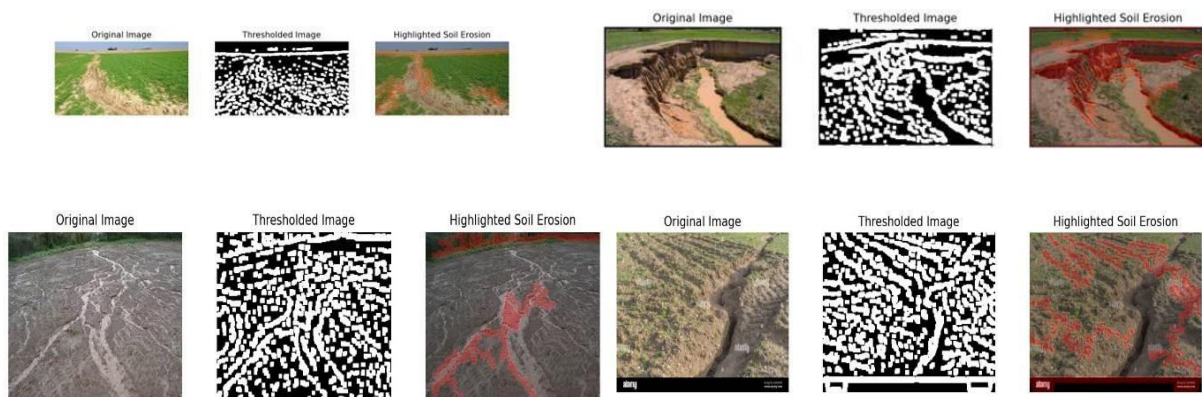


Fig.4.Output

### IV. CONCLUSION

The automatic identification and identification of soil-eroded areas in aerial images is a key achievement for environmental monitoring and management tasks. This tool's meticulous method of identifying erosion-prone areas



provides users with the knowledge they need to make informed decisions about conservation efforts, land use planning, and erosion control techniques. When users correctly identify locations that are prone to erosion, they can minimize the detrimental consequences of soil erosion by prioritizing actions, allocating resources efficiently, and putting targeted mitigation techniques into practice. Furthermore, the program's capacity to efficiently analyze broad landscapes enables thorough assessments of erosion patterns and trends over time, supporting proactive management approaches. With more study and development in this field, soil erosion monitoring and mitigation strategies could become much more effective. In the future, greater advancements in machine learning algorithms, image processing techniques, and remote sensing technologies will make it possible to create automated, scalable, and highly accurate systems for managing soil erosion. Ultimately, the efficient application of these cutting-edge methods contributes to the preservation of ecosystems, natural resources, and sustainable landscapes for future generations.

#### REFERENCES

- [1]. Maxim Samarin 1, Lauren Zweifel 2, Volker Roth 1 and Christine Alewell “Identifying Soil Erosion Processes in Alpine Grasslands on Aerial Imagery with a U-Net Convolutional Neural Network” 2020 12(24), 4149; <https://doi.org/10.3390/rs12244149>.
- [2]. Hanqiu Xu 1, Xiujuan Hu 1, Huade Guan 2, Bobo Zhang 1, Meiya Wang 1, Shanmu Chen 3 and Minghua Chen 3, “A Remote Sensing Based Method to Detect Soil Erosion in Forests” 2019, 11(5), 513; <https://doi.org/10.3390/rs11050513>.
- [3]. K. A. Lukyanchuk 1, I. P. Kovalchuk 1, O. M. Pidkova “Application of A Remote Sensing in Monitoring of Erosion Processes” May 2020, Volume 2020, p.1 – 5 DOI: <https://doi.org/10.3997/2214-4609.2020geo131>.
- [4]. Yao Zhijie, "The application of Google remote sensing and UAV aerial images in soil erosion control", Northern Environment, vol. 20, no. 5, pp. 6, 2020.
- [5]. Zhang Qiwei, "Talking about some applications and methods of Google remote sensing images and UAV aerial images in the preparation of the implementation plan of comprehensive soil erosion control", Subtropical Soil and Water Conservation, vol. 29, no. 3, pp. 3, 2021.
- [6]. Samarin, Maxim; Zweifel, Lauren; Roth, Volker; Alewell, Christine “Identifying Soil Erosion Processes in Alpine Grasslands on Aerial Imagery with a U-Net Convolutional Neural Network” 2020, Vol 12, Issue 24 DOI:10.3390/rs12244149.
- [7]. Yao Zhijie, "The application of Google remote sensing and UAV aerial images in soil erosion control", Northern Environment, vol. 20, no. 5, pp. 6, 2020.
- [8]. Zhang Qiwei, "Talking about some applications and methods of Google remote sensing images and UAV aerial images in the preparation of the implementation plan of comprehensive soil erosion control", Subtropical Soil and Water Conservation, vol. 29, no. 3, pp. 3, 2021.
- [9]. Cha Junxiong, "Application analysis of UAV aerial photography technology in soil erosion analysis of small watershed", Water Conservancy Technical Supervision, vol. 6, no. 4, pp. 12, 2019.
- [10]. Li Binbin, Yang Shengli, Cheng Minghan et al., "Application of UAV high-resolution aerial images in soil and water conservation", Beijing Water Affairs, vol. 2, no. 5, pp. 19, 2018.



INTERNATIONAL  
STANDARD  
SERIAL  
NUMBER  
INDIA



# INTERNATIONAL JOURNAL OF INNOVATIVE RESEARCH

IN SCIENCE | ENGINEERING | TECHNOLOGY

 9940 572 462  6381 907 438  [ijirset@gmail.com](mailto:ijirset@gmail.com)



[www.ijirset.com](http://www.ijirset.com)

Scan to save the contact details