



e-ISSN: 2319-8753 | p-ISSN: 2347-6710

IJRSET

International Journal of Innovative Research in
SCIENCE | ENGINEERING | TECHNOLOGY



INTERNATIONAL JOURNAL OF INNOVATIVE RESEARCH

IN SCIENCE | ENGINEERING | TECHNOLOGY

Volume 13, Issue 4, April 2024

ISSN INTERNATIONAL
STANDARD
SERIAL
NUMBER
INDIA

Impact Factor: 8.423

 9940 572 462

 6381 907 438

 ijirset@gmail.com

 www.ijirset.com

Designing and Automation of Oil Purification Panel

Swati Madnure, Bhavana Mane, Sakshi Yamgar

TSSM BSCOER Student, Department of Electrical Engineering, BSCOER Engineering College, Pune, India
D.A. Shinde Asst. Professor, Department of Electrical Engineering, BSCOER Engineering College, Pune, India

ABSTRACT: Oil purification panel, often referred to as automatic detect the fault in oil purification system, make the power switch to emergency standby generators in the event of significant loss of mains power or total blackout. Without oil purification panel, oil purification system need to be operated manually and that can mean lost data, potential damage to electrical equipment, and huge amounts of disruption. Oil purification panel is not just an electrical panel. Basically the sensing circuit of oil purification panel is detects a fault present in the oil purification system. When any fault occurs in the oil purification system, Automatic power failure of separator and heaters by using detection of controller.

KEYWORDS: Programmable Logic Controller, Motor Protection Circuit Breaker, Terminal Box, Single Pole Double Throw

I. INTRODUCTION

Oil and gas have negative characteristics. They should be removed. Impurities can negatively affect the taste, odor and appearance of the oil, reducing consumer satisfaction and marketability. They also stop using and producing extra fat. There are also some impurities that can be bad or at least considered bad by the public. Therefore, the oil needs to be purified. Refining is usually done in four steps. It can be done by traditional methods, including chemical refining, or using physical refining according to new technology. The physical process is technically more expensive. But it only requires two steps, while the normal process requires up to six steps. Refining has several steps, all of which lead to the purification of the oil. This oil purifier model works on oil purifier panel. The oil purification type uses the oil purification panel to do all the work. However, the operator needs to control the panel in the control room. For oil filter, some customers prefer PLC control panel. In fact, the current PLC control panel model and technology has matured, and the market's interest is also increasing. What is the PLC PLC= Programmable Logic Controller, it is the Programmable Logic Controller. A kind of digit arithmetic operated electronic system, is professional designed for the industrial application. It is adopted the programmable memorizer for internally stored program.

II. LITERATURE REVIEW

[1]. Industrial Building Oil Vapor Purification Technology May 1, 2023, 110229 Oil mist is a toxic smoke produced in industrial buildings that poses a danger to indoor and outdoor spaces and to healthcare workers. In order to ensure the quality of the interior and exterior environment of commercial buildings, cleaning should be done to remove oil mist. Oil vapor has different properties in terms of physical properties and shapes. The purification process will be affected by such phenomena as surface disintegration, easy adhesion, and flow of purification products. Therefore, gasoline refining technology is of particular importance. This article reviews the research on oil particle purification technology in recent years from the perspective of the difference between oil mist and material. Oil vapor emission characteristics of industrial plants have been noted and the success of different purification technologies has been noted. The final review looks forward to the challenges and development guidelines of oil mist purification technology.

[2] Oil/Water Separation Membrane Recent advances in separation and membrane technology have shown great potential in removing oil from wastewater. Additionally, the ability to create membranes with tunable properties such as wett ability, permeability, antifouling, and all properties that control the treatment of oily wastewater has also been improved. Here, the authors reviewed the oil/water separation membrane technology literature focusing on the following topics: 1) membrane characterization and characterization, 2) development of various materials (such as organic, inorganic, and hybrid membranes and new materials), 3) Membrane design (e.g., mixed-matrix nano composites and multi layers) and 4) thin film production technology and surface modification.

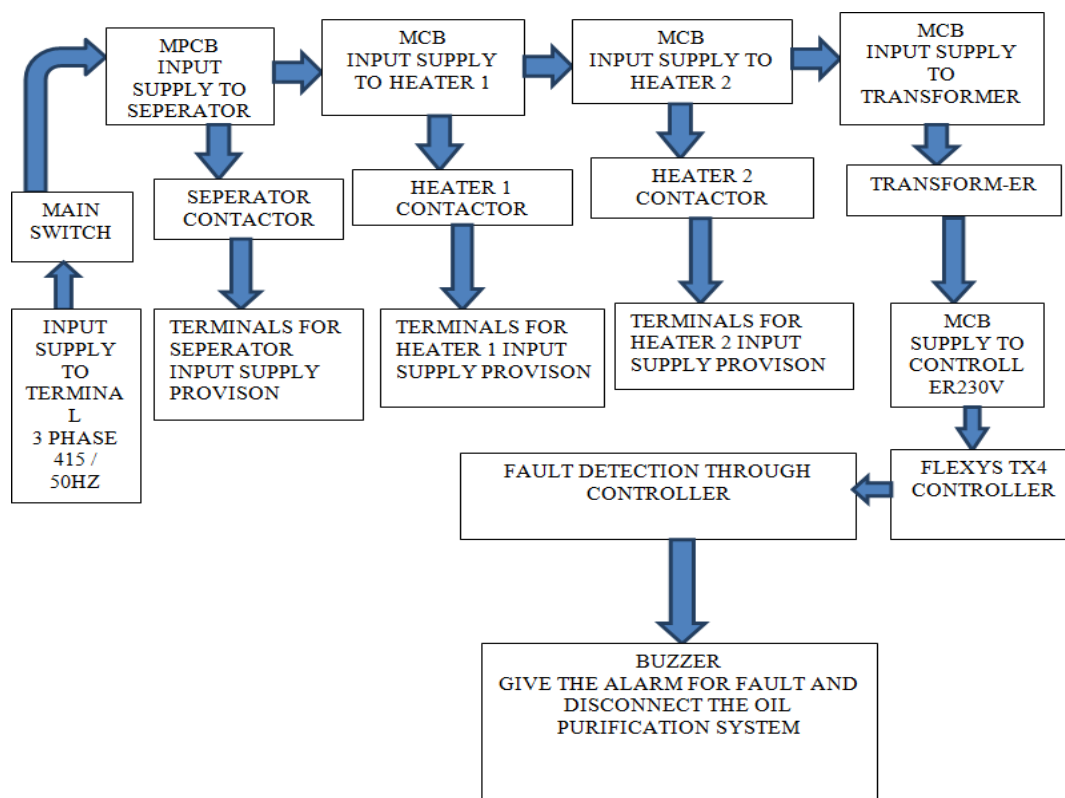


[3] Vegetable Oil Refining: Refining Processes, Progress and Added Value Consumers' food preferences today are driven by awareness of health and sustainability issues. Since vegetable oils are an important part of the human diet, their origin and function play an important role in consumer acceptance. Vegetable oil needs to be refined to remove impurities that affect its color, flavor, stability and safety. This review focuses on the processes and steps used in vegetable oil refining. Depending on the type of oil, chemical or physical refining is used to obtain the oil's specifications. The refining steps are sequential and each removes one or more specific impurities. Advances in technology are designed to reduce the use of chemicals, unhealthy foods, gasoline waste, and prevent the production of trans fatty acids. The review also discusses the possibilities of using cosmetic products to obtain beneficial substances such as phosphatidylcholine, tocopherols and tocotrienols. By adding value and integrating wastewater from different steps, the edible oil industry can become more economical and sustainable.

[4] Varnish formed and removed in the lubrication system This study provides the latest information on the examination of varnish in different types of lubricants. Over time, lubricants break down and can become contaminated. Varnish is known to clog filters, clog hydraulic valves and fuel injection pumps, block water, reduce clearance, cause heating and cooling malfunctions, and cause friction and wear in many lubrication systems. These problems can cause the machine to malfunction, reduce performance, and increase repair and maintenance costs. In order to improve the problems caused by varnish contamination, it is necessary to have sufficient knowledge about varnish. Therefore, this article reviews the content and properties of the dye, its production technology, production process, causes, precautions and prevention or elimination. Most of the information presented in this article is a warning from lubricant and mechanical manufacturers in publications.

III. BLOCK DIAGRAM & WORKING

3.1 Block Diagram Of Oil purification Panel



The primary input supply terminal receives the three-phase, 415V input supply. The terminal functions by simply passing the supply to the main switch via wires or cables. At that point, the supply has already reached the main switch. The main switch is used to turn on and off the panel's supply. The MPCB and MCB receive supply once the switch is

turned on .MPCB and MCB are utilized in the panel to supply input to the separator and heater contacts .The MPCB receives a three-phase supply, which is only passed from the MPCB to the input of the separator contactor. However, it doesn't in the coil. Additionally, the three-phase supply is looped using MCBs of heaters. Additionally, there is a two-pole MCB in the panel after turning on the supply, and this supply is routed to the heaters contactor after turning on the heaters MCB. This supply is directed toward a transformer, which transforms a three-phase, 415-volt supply into a single-phase, 230-volt supply. The controller requires a single phase supply because its input voltage is 230V. Following ON, the MCB supply travels to a transformer, which then converts the transformer supply to the MCB's input. The controller receives a single phase supply from the MCB after which it becomes operational. Just turn on the controller, however it will sound an alarm because it isn't functioning properly .Select downloader software allows us to insert programs into controllers and adjust controller parameters according on customer requirements. The controller is not in a healthy state after these steps. After that, use the TT1 and TT2 Terminals to supply the controller with the RTD supply, and adjust the temperature value according to the controller. Furthermore, two links are added to the TB because this panel serves as an oil purification system and contains sensors for defect detection. We have placed a link for the purpose of testing the fault due to a broken liquid seal and low water level in the heaters; after the sensor replaces the connection .And following this, every process controller is operating in a healthy manner; additionally, the controller is in charge of all other operations. After providing a three-phase supply to the separator contactor, just push the F1 button on the controller to activate the contactor coil and send the supply to the output separator terminal .Likewise, to stop the separator contactor, press F4. Similarly, to activate the Heaters contactor is in START mode, press F3.To access the STO heaters contactor, press F6. f a failure arise in the oil purification system, the controller will identify it and initiate .

IV. PANEL ARRANGEMENT

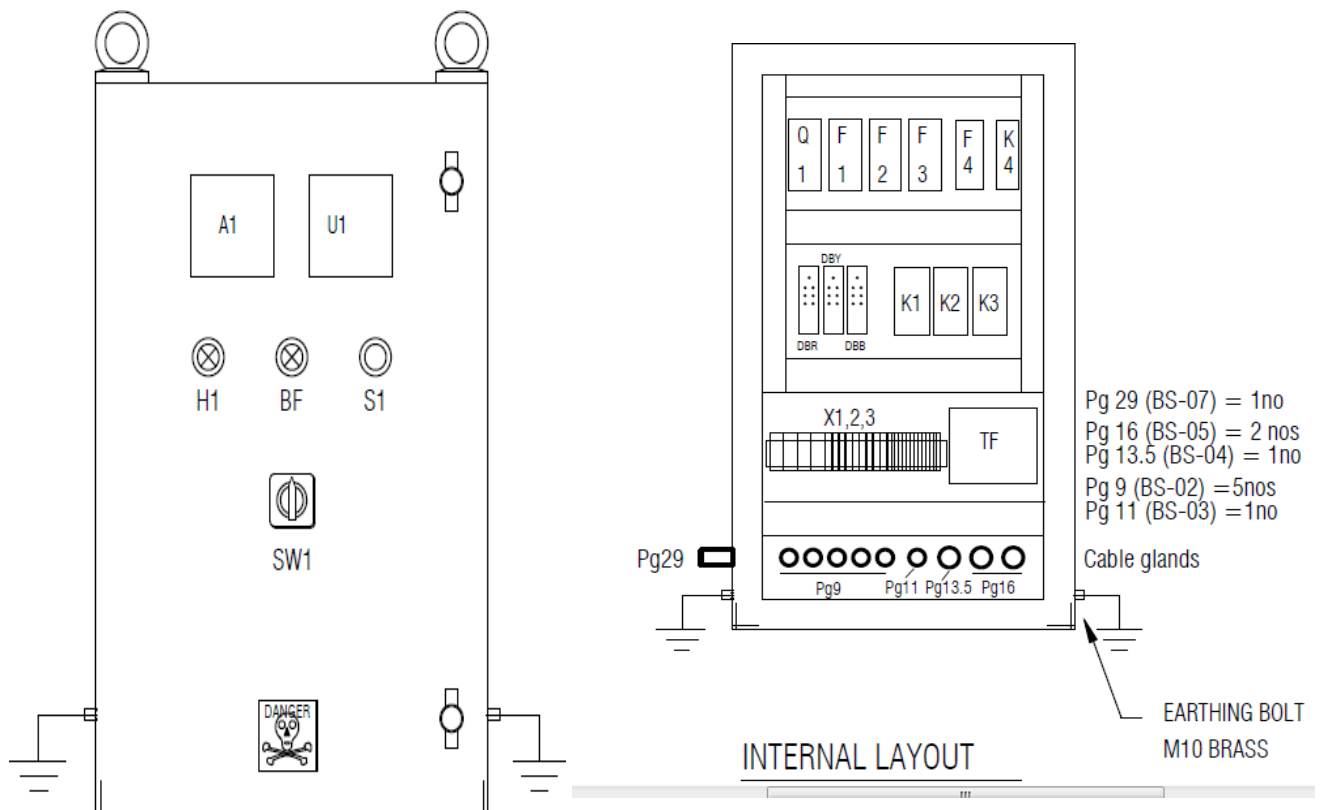


Fig 2. General Arrangement of Panel

V. HARDWARE COMPONENTS



Fig 3. Terminals

Terminals - Stud type (6-35mm², 17mm), Make - Connect well Terminal blocks, also known as connection terminals or terminal connectors, are a convenient way to secure and manage wires in a power supply system. They serve as an accessible junction point to connect different components of an electrical system without splicing or physically joining the ends.



Fig 4. Main Switch

Rated voltage:- 600V Current rating Frequency:-50/60 Hz HP:- 30 HP Main Switches are elementary switching protective devices for safe machine control. By applying or disconnecting the control panel from the power source they help you ensure that the electrical circuit is safe and de-energized during maintenance.



Fig 5 MPCB [Motor Protection Circuit Breaker]

MPCB stands for Motor Protection Circuit Breaker. The MPCB are the specially designed circuit breakers for protecting the electric motors against overload, short circuit, under voltage, phase loss, etc. Motor protection circuit breakers are a specialized type of electrical protection device that is designed specifically for electric motors, like their name implies. Electric motors have plenty of applications and are used to drive mechanical devices of all types, so it is very important to protect them adequately.



Fig 5. Pole MCB

Rated Voltage:- 415V Current Rating:- 20A Breaking capacity:- 10Ka Trip Unit technology:- Thermal Magnetic Curve code:- C Frequency:- 50/60Hz When the current overflow occurs through MCB – Miniature Circuit Breaker, the bimetallic strip gets heated and deflects by bending. The deflection of the bi-metallic strip releases a latch. The latch causes the MCB to turn off by stopping the current flow in the circuit.

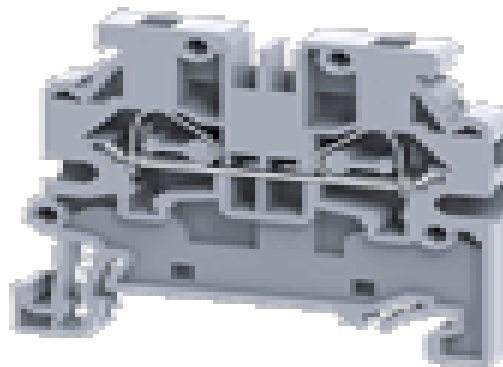


Fig 6. Output Terminal

Output terminal is required for input of field. The output panel is connect to the input of customer model. The Connect well CSTSN6U is a 35 sq. mm Stud Type Terminal Block in Grey color, Nut driver operated M6 sized Stud Type Terminal Blocks, with Universal Mounting Possibility. These Terminal Blocks are preferred for applications where the connections are subjected to severe vibrations.



Fig 7. Buzzer

A buzzer beeper is an audio signaling device, which may be mechanical, electromechanical, or piezoelectric (piezo for short). Typical uses of buzzers and beepers include alarm devices, timers, train and confirmation of user input such as a mouse click or key stroke. Buzzer Cum Flasher manufactured by „MIMIC“, is an important component for electrical control panel manufacturers, related to control panel, automation & automatic machinery.



Fig 8. Indication lamp

This Harmony XB7, plain lens monolithic red pilot light is supplied with 230V AC, uses an integral LED and screw clamp terminals. It is easily installed into standard 22mm diameter cut-outs and connected with simple screw-clamp connections. It is clearly distinguishable visually at a distance due to clear colors and illumination via integral LED, enabling complex machine statuses to be read at a glance.



Fig 9. Indication lamp

Distribution Blocks is an ideal choice for a simplified distribution system. A bolt in the center of the block provides a connection point for the incoming cable. All the terminals are internally connected and provide multiple connection points for the outgoing wires.



Fig 10. Indication lamp

Emergency stop buttons essentially break an electrical circuit to prevent power from passing through. This causes the machinery to stop functioning immediately. E-stop (emergency stop) is a simple, highly visible button designed to shut down operations on heavy and/or dangerous equipment. Used to save lives in industrial operations, E-stops shut down equipment immediately

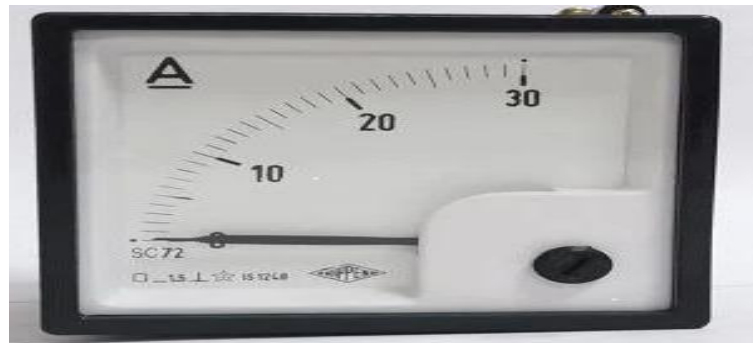


Fig 11. Ammeter

Type of measurement: Alternating current current intensity Measuring range: 0 - 30A Connection type: Direct Class (accuracy): 1.5 Frame dimensions: 96 x 96mm When an ammeter is connected in series in a circuit, the current flowing through the ammeter is equal to the current flowing through the circuit. Due to this current, there are deflections in the magnetic coils of the ammeter which moves the pointer across the graduated scale. An ammeter (abbreviation of Ampere meter) is an instrument used to measure the current in a circuit. Electric currents are measured in amperes (A), hence the name.



Fig 12. Flexy Controller

Supply Voltage:- 230VAC (90-270V AC) No. of outputs per card:- 8 Sensor Supply (SS) 10V (100mA) Power Consumption:- 13 VA Type of controller:- PLC based This is the device or algorithm that processes the sensor input and generates the control output. It compares the measured process variable to the desired set point and calculates the error signal. Based on this error signal, the controller generates the control output to the actuator.



Fig 13. Potential Transformer

A step-down transformer is a transformer that lowers the voltage. General appliances will use the step-down transformer to 220 v electric, step-down to the working voltage of electric equipment, controller etc. The Potential transformer working principle is based on Faraday's law of electromagnetic induction

VI. JUSTIFICATION OF HARDWARE TOOL

Ferrule printing Machine:- Ferrule printing machines use thermal transfer technology to print onto heat-shrinkable tubing. This ensures that the labels are durable, long-lasting, and able to withstand harsh environments. Crimper:- A crimping tool is the tool used to deform the material and create the connection. Crimping is commonly used in electrical work, to attach wires together or wire to other connectors. Wire stripper:- A wire stripper is a hand tool designed to remove the protective covering, or jacket, from electrical wires. By removing the jacket, the wire stripper helps the electrician expose the wire for new uses or repairs. Screw Driver:- Screwdrivers are a type of hand tool used for the insertion and removal of screws. They are available in a multitude of variations to correspond to the correct screw drive. The drive or head of a screw has a shaped cavity and protrusion that fits the screwdriver tip Cable tray cutter:- cable tray cutter is used for the cutting of cable tray. Brother Machine:- Use a Brother P-touch label printer to create labels for: cables and cabling, wires, fuse boxes, faceplates, distribution boards and consumer units. Also ideal for: warning and hazard signs, bus duct risers and electrical trucking and conduits. Laptop:- for programming of controller and design of controller .Din reel cutting machine :- this machine is used for the cutting of din reel.

VII. RESULT



The result of implementing an oil purification control panels is improved efficiency, enhanced quality of purified oil, reduced maintenance cost, increased operational safety, and streamlined monitoring and management of oil purification process.



VIII. CONCLUSION

The oil purification control panel offers efficient management and monitoring of oil purification process, ensuring optimal performance and quality. Its compressive features streamline operations enhance safety, and minimize downtime, making it an indispensable component for any oil purification system. The oil purification panel is a critical component in ensuring the efficiency, longevity, and reliability of industrial machinery and equipment. Through its meticulous filtration and purification processes, it removes contaminants, moisture, and impurities from oil, thus safeguarding the integrity of the machinery it serves. The oil purification panel plays a pivotal role in maintaining optimal performance and minimizing the risk of costly downtime due to equipment failure. Its implementation not only enhances the operational efficiency of industrial processes but also contributes to sustainable practices by extending the lifespan of machinery and reducing environmental impact through the reuse of purified oil. As technology advances, continued innovation in oil purification panels will further elevate their effectiveness, making them indispensable assets across various industries.

IX. REFERENCES

1. Purification technology of oil mist in industrial buildings 1 May 2023, 110229.
2. Membranes for Oil/Water Separation Author manuscript; available in PMC 2023 Sep 22. Published in final edited form as Adv Mater Interfaces. 2022 Sep 22; 9(27): 10.1002/admi.202200557. doi: 10.1002/admi.202200557.
3. Vegetable Oil Refining: Process, Advances and Value Addition Refining Anup Sonawane and Samadhan R. Waghmode Submitted: 28 August 2022 Reviewed: 25 October 2022 Published: 01 September 2023 DOI: 10.5772/intechopen.108752.
4. Varnish Formation and Removal in Lubrication Systems 2023 May; 16(10): 3737. Published online 2023 May 15. doi: 10.3390/ma16103737.
5. Sutton, D I. "Filtration and Contamination Control" Industrial lubrication and Tribology Journal, Vol.45 No.6, 1993, P .P .5-7.
6. Pandey, R. L, and Agrawal, V .P., "Design Of Centrifugal Oil Filter" , Internal report, IIT Delhi, 2003.
7. Product review-"A look at Oil Filtration" Industrial lubrication and Tribology Journal, March-April 1980.
8. Nortan, R. L, "Machine Design- An Integratated Approach" Person Education Asia, New Delhi, 2002.
9. F. Angerosa et al. Volatile compounds in virgin olive oil: occurrence and their relationship with the quality Journal of Chromatography A (2004).



INTERNATIONAL
STANDARD
SERIAL
NUMBER
INDIA



INTERNATIONAL JOURNAL OF INNOVATIVE RESEARCH

IN SCIENCE | ENGINEERING | TECHNOLOGY

 9940 572 462  6381 907 438  ijirset@gmail.com



www.ijirset.com

Scan to save the contact details