



e-ISSN: 2319-8753 | p-ISSN: 2347-6710

IJRSET

International Journal of Innovative Research in
SCIENCE | ENGINEERING | TECHNOLOGY



INTERNATIONAL JOURNAL OF INNOVATIVE RESEARCH

IN SCIENCE | ENGINEERING | TECHNOLOGY

Volume 13, Issue 8, August 2024

ISSN INTERNATIONAL
STANDARD
SERIAL
NUMBER
INDIA

Impact Factor: 8.524

 9940 572 462

 6381 907 438

 ijirset@gmail.com

 www.ijirset.com

Plant Leaf Disease Detection using Transfer Learning Approach

M. Supraja¹, Deekshith G², Bindushree.N³, Anjali R⁴

Assistant Professor, Department of Computer Science Engineering, Rajarajeswari College of Engineering, Bangalore, Karnataka, India¹

U.G. Student, Department of Computer Science Engineering, Rajarajeswari College of Engineering, Bangalore, Karnataka, India^{2,3,4}

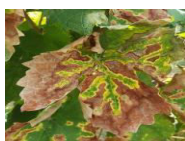
ABSTRACT: Farming is one of major businesses of a nation which reliable for the country's frugality. Fake perceptivity (AI) has too made its claim indirect member in the husbandry frame to move forward the edit rendition. Our extend makes a difference to anatomize, distinguish the infection, classify them agreeing to the kind and gives the right diseases. The Convolutional Neural Arrange (CNN) strategies are employed to distinguish different factory splint infection and makes a difference to liberate the picture from dataset. The proposed frame identifies the infection exercising Exchange Learning Approach combined with PyTorch Libraries. And to a movable operation has been made for agronomists to take photos of clears out themselves without the offer backing of anybody differently to distinguish the ails and the way to take the prompt exertion have been given.

KEYWORDS: Convolutional Neural Organize (CNN), Exchange Learning, PyTorch and Android Application: Text detection, IN painting, Morphological operations, Connected component labelling.

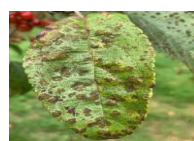
I. INTRODUCTION

Agriculture is an imperative portion of the country's fiscal development and has a history of 50 decades. It has been developing all feathers of crops and keeping up people's good. Due to need of information roughly exercising toxin for different feathers of crops, are being devastated by bothers and creepy crawlies. Due to need of licit security of the seasoning in the agricultural arrive, the crops are getting ruined, driving to the rigors of the drovers. We've to take applicable way to make husbandry fruitful in emptying all feathers of troubles, which is a conspicuous position in the fiscal frame of the nation. Leaf infection position is imperative since benefit and mischance depend on generation. So that then use exchange literacy strategies to identify apple, grape, sludge, potato and tomato factory clears out ails.

That contains twenty- four feathers of splint infections and twenty- four thousand takes off film land are used. Apple, grape, sludge, potato, and tomato factory clears out which are distributed add up to 24 feathers of names apple name specifically Apple scab, Dark decay, apple rust, and solid. Grape name to be specific Dark decay, Esca, solid, and Leaf curse. sludge name specifically Corn Cercospora spot Gray spot, sludge rust, sludge sound, Corn Northern Scourge. Potato name specifically Early curse, solid, and Late curse. Tomato name specifically bacterial spot, early scourge, sound, late curse, splint shape, septoria splint spot, nonentity vermin, target slip mosaic infection. The dataset comprise of 31,119 film land of apple, grape, potato and tomato, all film land are resized into 256 x256, that film land partitioned into two corridor preparing and testing dataset. Grapes Esca Apple scab sludge splint spot We can see vegetable and natural products clears out like potato, tomato, sludge, apple with unhealthy portion this sickness can be effectively linked exercising exchange literacy approach. This infection honored exercising Exchange Learning and film land are resized into 224 x 224.



Grapes Esca



Apple scab



Corn leaf spot

SHAPE * MERGEFORMAT

1.1 Objects

The ideal of this probe is to concentrate grounded on potato, sludge, tomato, apple and grapes splint sickness position exercising Exchange Learning approach. Transfer literacy is employed for look at the solid and infected factory clears out precisely and gives the fresh data of the same.

1.2. Provocation relating, classifying and acknowledgment of takes off sickness is the strategies for sparing the lessening of extensive cultivate in edit infection discovery and benefit in effectiveness, it's profitable in agricultural innovated, Natural exploration.

II. FABRIC & STYLES

2.1 Datasets

To back our interrogate about in the region of collection of film land available from Pennsylvania state council named factory vill dataset. The dataset factory- vill included 152 edit arrangements, 38 trim classes, and 19 neat orders, for 54,303 trim takes off film land. In the datasets, high quality JPEG picture organize with 5471width and 3648 highness pixels are available. In the pre-processing, de-nosing, division and after images are 256 X 256 pixels(Gandhi et al., 2018). The factory vill is a well- known dataset for neat infection, with a huge number of public datasets accessible. A factory vill dataset film land were captured in the lab, in this way they're employed as preparing datasets. Our show tried on real field captured film land, As a result, we must concentrate on developing our retain field database. The test filmland were captured with a separate Megapixel camera and put down in a database. The datasets arranged in the field are accessible and be employed in the proposed interrogate about. The agro deep movable operation was employed to capture a many on- field crops images. The field prints were taken with the redmi Note 5 Professional MIUI Global11.0.5.0(PRIMEXM), Android Form PKQ1.180904.001, and a camera figure 43 altitudinous picture quality on 16 MP 5MP with f/2.2 opening pixel, in a multifariousness of normal situations. The complaint- affected and healthy photos are the most common picture orders collected for interrogate about purposes. Solid spot bemired, mosaic infection, unheroic splint coil infection, septoria splint spot bacterial spot, early scourge, late curse, splint mould, septoria splint spot, and creepy crawly bugs are cases of tomato imagery.

2.2. Proposed exploration

The schematic in Fig 1 portrays a implicit see for multi-crop splint complaint bracket and examination. At first, factory splint infection images are collected and classified into a many orders. Picture filtering, slate change, picture honing, and scaling are a many of the image- processing strategies. By exercising information increase styles, new test photos are made from accessible photos to upgrade and prepare the dataset. Blowup styles like turning, restatement, and randomized change are employed to upgrade the estimate of the dataset. The photos are at that point employed as input to the recommended approach for preparing the demonstrate in the taking later arrange. The lately prepared structural show is employed to anticipate formerly concealed filmland. ultimately, the discoveries of factory illness discovery and distinguishing evidence are achieved. Eventually, total points of interest of these way are delineated in subsequently corridor(Table 1).

2.3. Test film land order

The test filmland of crops appeared in Fig. 2 portray the order of field's tomato splint filmland of different infection and solid classes. The filmland are one- of-a-kind for each kind of illness side effect, design, spot, and color check. Particular tomato factory splint infections similar as bacterial wilt, splint shape, and dim spots are honored and honored as infection affected acknowledgment characteristic. 3 delineates field filmland of grape vine clears out gotten in the Nashik quarter of Maharashtra, India. A grape order, Solid 423, Dark Rot 1180, Dark Measles 1383 and Leaf Scourge 1076 filmland were recorded, honored, and captured. The datasets for grape factory clears out were created by altering the brilliance and shade of filmland from the A to D order(See Figs. 4- 5).

The moment trim of tomatoes tested Early curse 1000, Mosaic contagion , Bacterial spot 2127, Late scourge 1909, Leaf shape 952, Septoria splint spot 1771, 1404 spot, nonentity vermin 1676 and unheroic splint twist 3209. The deep literacy grounded strategies are state- of- the- art in computer vision, which is used in image acknowledgment and bracket. In common, dataset collecting, information pre-processing, picture division, include birth, and bracket are the four stages of Manufactured perceptivity(AI) in husbandry A.S. Paymode and V.B. Malode approaches for edit splint

sickness position and bracket exercising Convolutional Neural Organize(CNN). A Google Colaboratory platform was employed to pre-process the picture, birth of highlights, and classify it.

2.4 Picture addition

The huge number of datasets makes strides the literacy algorithms' prosecution and avoids overfitting. Getting a real-time dataset for use as input to a preparing demonstrate is a complex and time-consuming operation. As a result, information blowup broadens the extend of preparing information available to profound literacy models. Profound literacy-grounded increase approaches include picture flipping, trimming, revolution, color change, PCA color blowup, commotion redundancy, Generative Ill-disposed Networks (GANs), and Neural Fashion Exchange(NST). The Faster DR- IACNN approach for feting grape splint infections is grounded on deep literacy. The programmed birth of spots on clears out has a altitudinous position speed and perfection. There are 4449 unique prints and photos created exercising information blowup ways. Fig 1. Proposed interrogate about frame sluice illustration. The filmland are changed over into a vector of settled highlights through include birth in division. The color, face, and shape are the system- espoused highlights. A implies, certainty parentheses, and sleekness have been employed as colored strategies, with HSV and RGB color spaces being recovered. The argentine- position co-occurrence chassis is preferred when disengaging face highlights from a color picture. This approach is used to distinguish factory conditions.

2.5 Exchange learning

The model's optimization and preparing is a violent and time consuming operation. A effective visual preparing unit(GPU) is needed for the preparing, as well as millions of preparing exemplifications. still, exchange literacy, which is employed in profound literacy, solves all of the issues. The pre-trained Convolutional Neural Network(CNN) employed in exchange literacy is optimized for one task and exchanges information to distinctive modes. The multi-crop picture dataset demonstrate comprises a measure of 224 X 224. The remaining arrange(ResNet) needed to be tweaked. In all ResNet models, the last subcaste some time lately the softmax is a 7 X 7 normal- pooling subcaste. A littler picture can fit into the network when the pooling measure diminishes. The abecedarian picture planning is necessary for the exchange literacy contemplations with the multi cropped picture dataset.

III. RESULTS & DISCUSSION

3.1 Convolutional neural network

The convolutional layers, pooling layers, completely- connected layers, and thick layers constitute the armature of the Convolutional Neural Network(CNN)(See Fig. 3). The layers' description is shown below

3.1.1 Convolutional sub caste

Convolutional layers' abecedarian function is to prize unique features from images. The perpetration of convolutional layers on a normal base facilitates the birth of input, The features birth(H_i) among several layers in CNN is reckoned using the formula below.

the formula below.

$$H_i = \varphi (H_{i-1} W_i + b_i)$$

Where, H_i point chart, W_i – Weight, b_i is neutralize and φ – remedied Lin observance Unit(RELU) .

3.1.2 Pooling layers

The pooling layers are a pivotal element of a Convolutional Neural Network(CNN). It shrinks the size of convolved features in dimension while contemporaneously minimizing the computational coffers necessary for image processing. Pooling arise distributed into two types maximum pooling and average pooling. Max pooling returns the maximum value of images, whereas an average pooling returns the average value of the image section.

3.1.3 Drop-out layers

The powerhouse layers ameliorate the capability of a trained model. It provides regularization and prevents the model from over-fitting by de-furrowing the correlation between the neurons. The drop out process is used in all the activation functions but it's gauged by factor.

Table 1

A study of deep learning techniques with classification and recognition rate (See Fig. 12).

Approach	Classification	Model	Recognition rate (%)
Hybrid Combination (Massi et al., 2020)	Three SVM	SVM	91.11
Deep Learning (Ferentinos, 2018)	CNN	VGG	97.53
Multi-Context Fusion Network (MCFN) (Wu, 2020)	CNN	AlexNet & VGG16	97.50
Deep Transfer Learning (DTL) (Chen et al., 2020)	CNN	VGG	91.83
Machine Learning (Kurmi et al., 2020)	SVM	MLP	94.35
Deep Learning (Sun et al., 2020)	DCNN	DCNN	88.46
Deep Learning (Xie et al., 2020)	Faster DR-IACNN	Inception-v1 ResNet-v2	81.11

3.1.4 Flatten layers

It collapses the spatial confines of the counterplotted pooled features while retaining the channel confines. The flattened sub caste adds redundant confines and after it's converted into a vector.

3.1.5. Fully-connected layers

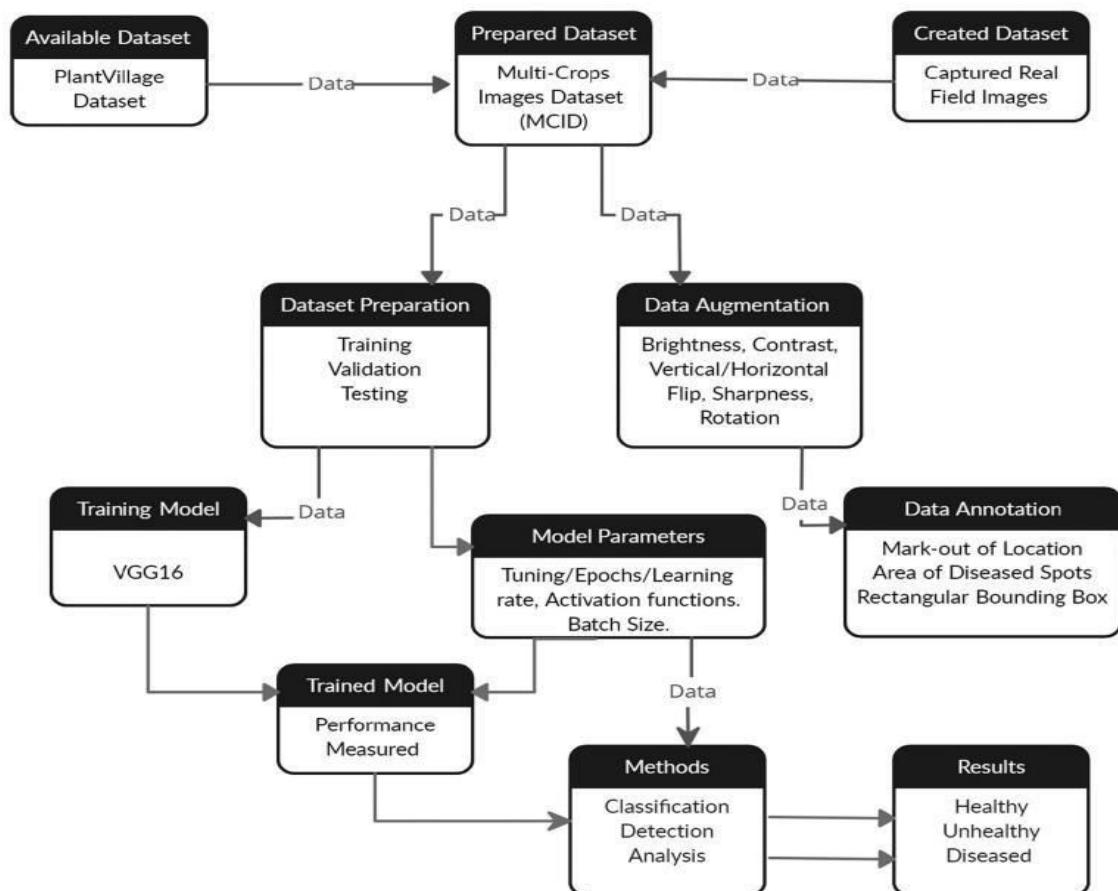


Fig 1. Proposed research system flow diagram.

Fully associated layers are required for extricated pictures classification highlights since of their uncommon reason. The softmax work predicts prior extricated picture properties from going before layers. Softmax is a multiclass

classification actuation work in the yield layers. The neural arrange layer employments a multilayer perceptron show (MLP) as a classifier for two-class classification.

The show with nonlinearity, which is presented in the full vectors utilizing amended linear unit (RELU) enactment. The flexibility of course partition is more noteworthy when utilizing a bolster vector machine (SVM). The fundamentals of SVM are as depicted in the taking after:

Where C is the tuning measure

The softmax parameter $\gamma = 1$ and $C = 1$ are utilized all through preparing and test sets of the classification algorithm. here C is the tuning degree, subject to the imperative $y_j (W \cdot X + b) \geq 1 - \zeta, j = 1, 2, 3 \dots N$. The softmax parameter $\gamma = 1$ and $C = 1$ are utilized all through preparing and test sets of the classification algorithm

3.2. VGG16

The Convolutional Neural Organize based VGG16 pre-trained models are utilized to advance the execution and classify the crop images as strong and ailment pictures. For quality disclosure and analysis of alter leaf pictures, the initial illustrate trades information from pre-trained VGG16 models. The Convolutional Neural Network (CNN) appear held unused pictures of the field and learned to perform a illustrate for sickness revelation and classification.

The VGG appear made strides with broad kernel-sized channels, channel gauge is set to (1 x 1). The walk degree is settled to 1 and max pooling is performed with 2 x 2 sizes and walk set to 2. In the taking after steps, totally related layers have the same course of action with 4096 channels in each layer. The final layer is the softmax incitation layers, taken after by the RELU sanctioning functions

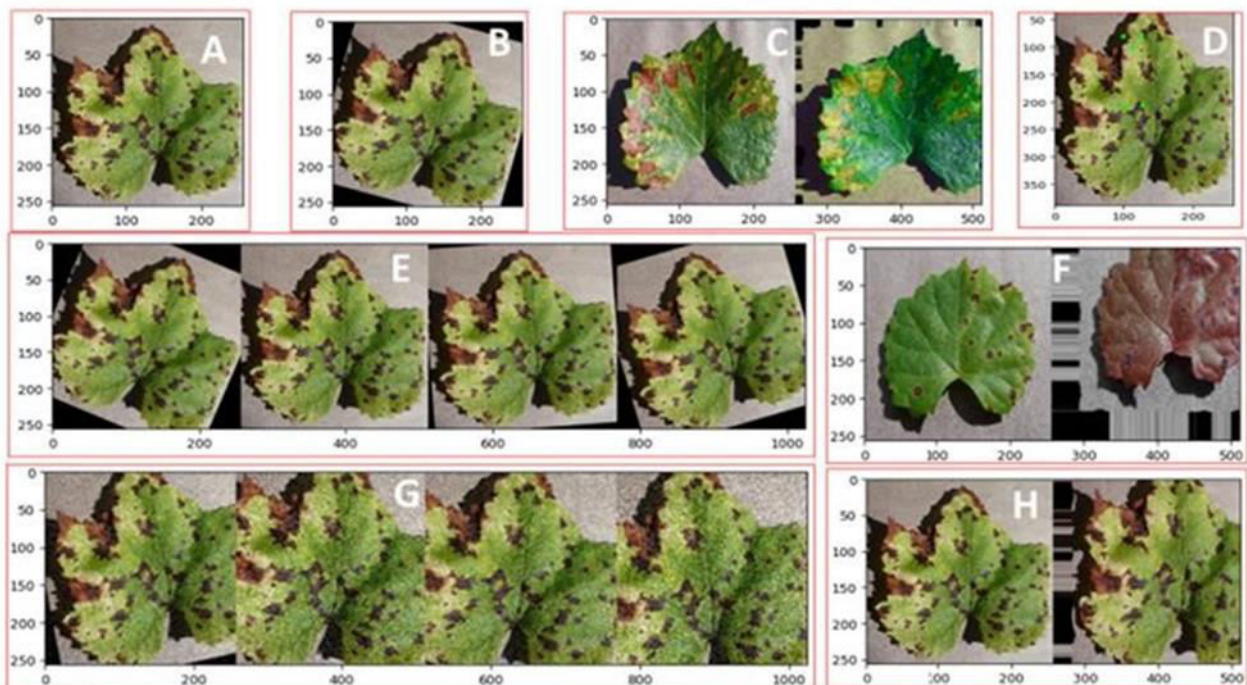


Fig. 2 Augmentation of varieties crops (A: Base, B: Twisted, C: Colored, D: image point)

3.3. Execution measure

The F1 score, precision arrange, and Beneficiary working characteristic (ROC), as well as the zone underneath the twist (AUC), are being utilized to evaluate division execution (AUC). The execution of the classifier is measured utilizing evaluation metrics.

3.4. Planning and endorsement accuracy

Training and endorsement precision is measured by setting contrastent values while planning the appear. The tests were carried out at Google Colaboratory on the available Crush of 12.50 GB. Whereas performing the attempt, different values are set for the take after validating: the number of ages, learning rate, dropout rate, and the number of pictures popular as planning hardship, planning accuracy, validation mishap, and endorsement exactness. A model's execution is measured and affirmed on the grape and tomato crops' takes off.

3.5. Figures and graphs

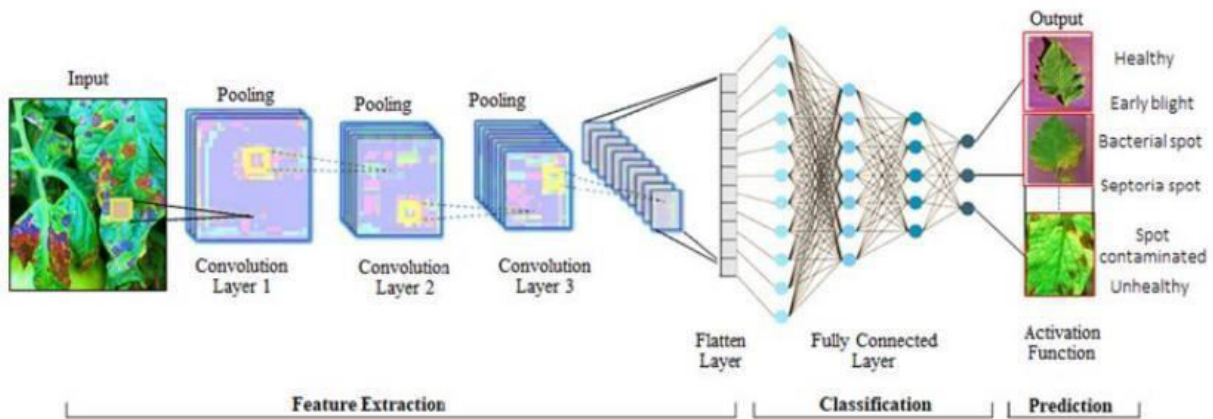


Fig 3. Proposed convolutional neural network CNN architecture.

A model's execution is measured and affirmed with planning, test ing, and endorsement methodologies for grapes and tomatoes clears out. Fig 4 and Fig. 5 show up the planning and endorsement accuracy and incident of the grape takes off and tomatoes, respectively. The confuse arrange has been utilized to degree the execution parameter for grapes and tomatoes takes off, as showed up in Fig. 11. Explore with the truths collected. The proposed approach is attempted utilizing our grapes and tomatoes picture datasets, which were taken in a real-field with distinctive view and light constrain, comparative to the tests done in Area 4.4. were passed through a convolutional layer with a channel appraise of (3 x 3).For straight alter of the input channel, the channel degree is set to (1 x 1). The walk appraise is settled to 1 and max pooling is performed with 2 x 2 sizes and walk set to 2. In the taking after steps, totally related layers have the same course of action with 4096 channels in each layer. The final layer is the softmax incitation layers, taken after by the RELU activation function

IV. SITE DEVELOPMENT

We created the site utilizing exchange learning approach. This demonstrate employments the right measures at each organize to distinguish the malady and give the right fertilizers for it. Agriculturists are self-sufficient and can buy fertilizers themselves without any help. No matter where they are, they can utilize this site and give a interface to purchase the right fertilizers. We give the right pesticides for predominant trim security that can be utilized by ranchers or any lesson of individuals to secure their crops. This site is free and does not inquire for any kind of cash, you as it were require to pay to purchase fertilizers

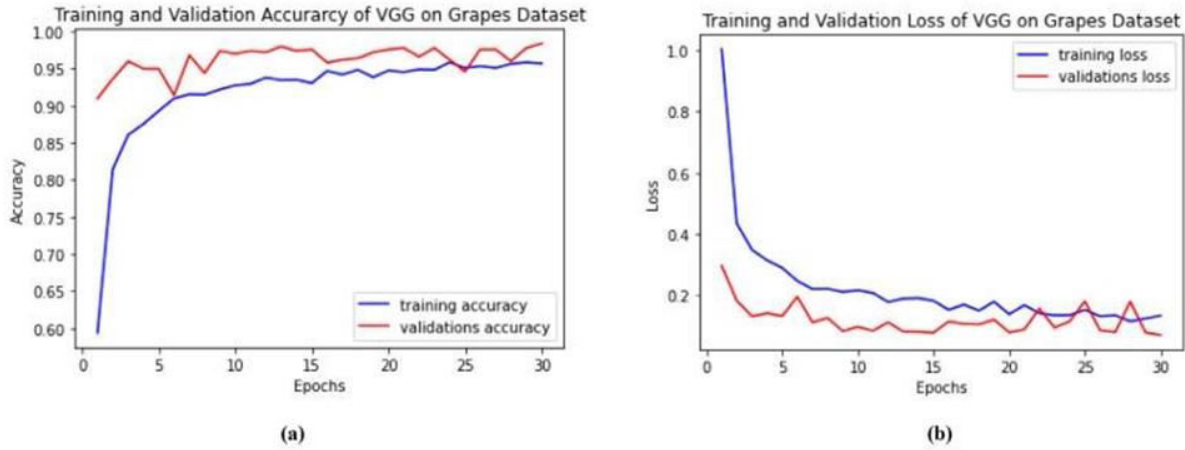


Fig 4. Training and validation. (a) Accuracy and (b) loss of VGG16 grapes

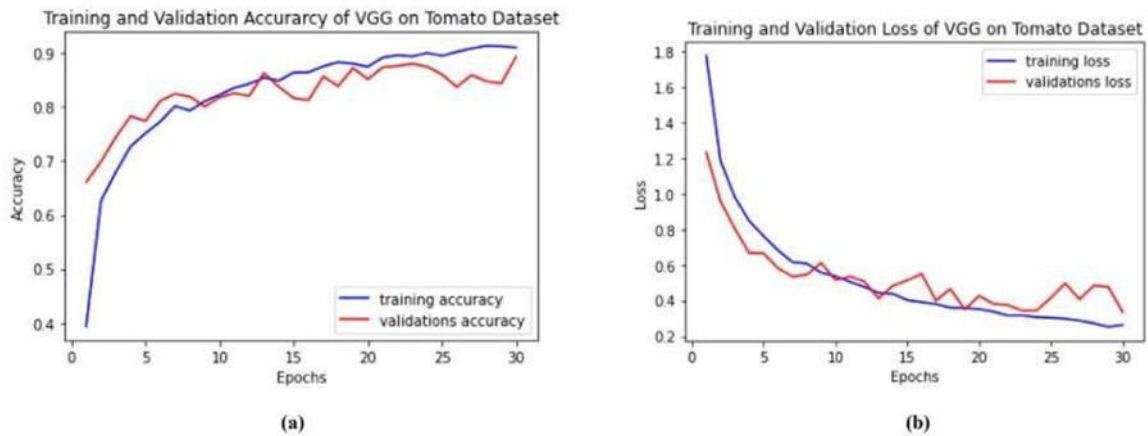


Fig 5. Training and validation. (a) Accuracy and (b) loss of VGG16 tomatoes



Fig.6 Web page interface

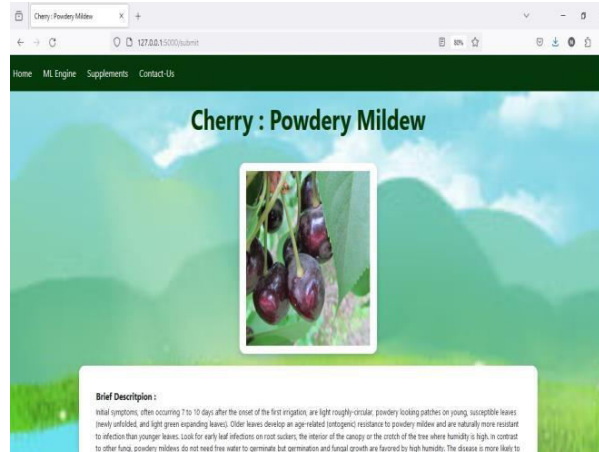


Fig.7 Model Detecting plant leaf disease.

V. CONCLUSION

In this paper, there are 24 sorts of alter contamination takes off were collected and organized as a dataset with available data. The strategies of data aug mentation, dataset pre-processing, planning, and testing are associated to the convolutional neural network-based VGG16 illustrate. The proposed show is built and attempted to move forward the execution measured and compared.

The evaluation estimations parameters are higher and extended as compared to other open datasets and methodologies. In this way, our proposed re look work extended precision for grapes by 98.40% and for tomatoes by 95.71%. Ceaselessly moving forward the execution of on-field crops, leaf is ages and ailments classification and examination is a fundamental step, but with our show finished the most raised execution, which supported rural improvement. The major center of ask around is to allow progress in the cultivating fragment and an increase in food era. The collection and course of action of veritable datasets and applying to the significant learning models with distinctive crops takes off pictures is a future target. In the future, the utilize of Start V3 and Res Net-based CNN models for much more profound examination of alter pictures is anticipated. Ourwork engages and fortifies agriculturists, which in the long run raises develop pay and makes a contrast to construct up viable countries.

REFERENCES

1. Ai,Y., Sun,C., Tie,J., Cai,X., 2020. Exploration on recognition model of crop conditions and nonentity pests grounded on deep literacy in harsh surroundings. IEEE Access 8, 171686 – 171693
2. Alencastre-Miranda,M., Johnson,R.M., Krebs,H.I., 2021. Convolutional neural networks and transfer literacy for quality examination of different sugarcane kinds. IEEE Trans. Indus. Inform.
3. Ang,K.L.M., Seng,J.K.P., 2021. Big data and machine literacy with hyper spectral information in husbandry. IEEE Access 9, 36699 – 36718.
4. Arun Pandian,J., Geetharamani,G., Annette,B., 2019. Data addition on factory splint dis ease image dataset using image manipulation and deep literacy ways. Pro ceedings of the 2019 IEEE 9th International Conference on Advanced Computing, IACC 2019,pp. 199 – 204
5. Chen,J., Chen,J., Zhang,D., Sun,Y., Nanekaran,Y.A., 2020. Using deep transfer literacy for image- grounded factory complaint identification. Comput. Electr. Agricult. 173(November 2019) 105393.
6. Deep literacy models for factory complaint discovery and opinion. Compute. Handpick. Agric. 145(September 2017), 311 – 318. Gandhi,R., Nimbalkar,S., Yelamanchili,N., Ponkshe,S., 2018. Factory complaint discovery using CNNs and GANs as an augmentative approach. 2018 IEEE International Conference on Innovative exploration and Development, ICIRD 2018, no. May 1 – 58376321.
7. Hiary,H., Al,S.B., Ahmad,M., Reyalat,M. Braik, ALRahamneh,Z., 2011. Fast and accurate discovery and bracket of factory conditions.

Int.J. Comput. Appl. 17(1), 31 – 38.

8. Jin,X., Che,J., Chen,Y., 2021. Weed identification using deep literacy and image process ing in vegetable colony. IEEE Access 9, 10940 – 10950.

9. Kurmi,Y., Gangwar,S., Agrawal,D., Kumar,S., Srivastava,H.S., 2020. Leaf image analysis grounded crop conditions bracket. Signal Image Video Process. Liu,S.Y., 2020. Artificial intelligence(AI) in husbandry. IT Profes. 22(3), 14 – 15.

10. Massi,I.E., Mostafa,Y.E.-s., Yassa,E., Mammass,D., 2020. Combination of multiple classi fiers for automatic recognition of conditions and damages on factory leaves. Gesture Image videotape Process.

11. A.S. Pay mode andV.B. Malode Artificial Intelligence in Agriculture 6(2022) 23 – 33 32 Nevavuori,P., Narra,N., Lipping,T., 2019. Crop yield vaticination with deep convoluntional neural networks. Comput. handpick. Agric. 163(June) 104859.



INTERNATIONAL
STANDARD
SERIAL
NUMBER
INDIA



INTERNATIONAL JOURNAL OF INNOVATIVE RESEARCH

IN SCIENCE | ENGINEERING | TECHNOLOGY

 9940 572 462  6381 907 438  ijirset@gmail.com



www.ijirset.com

Scan to save the contact details