



e-ISSN: 2319-8753 | p-ISSN: 2347-6710

IJRSET

International Journal of Innovative Research in
SCIENCE | ENGINEERING | TECHNOLOGY

INTERNATIONAL JOURNAL OF INNOVATIVE RESEARCH

IN SCIENCE | ENGINEERING | TECHNOLOGY

Volume 13, Issue 8, August 2024

ISSN INTERNATIONAL
STANDARD
SERIAL
NUMBER
INDIA

Impact Factor: 8.524

 9940 572 462

 6381 907 438

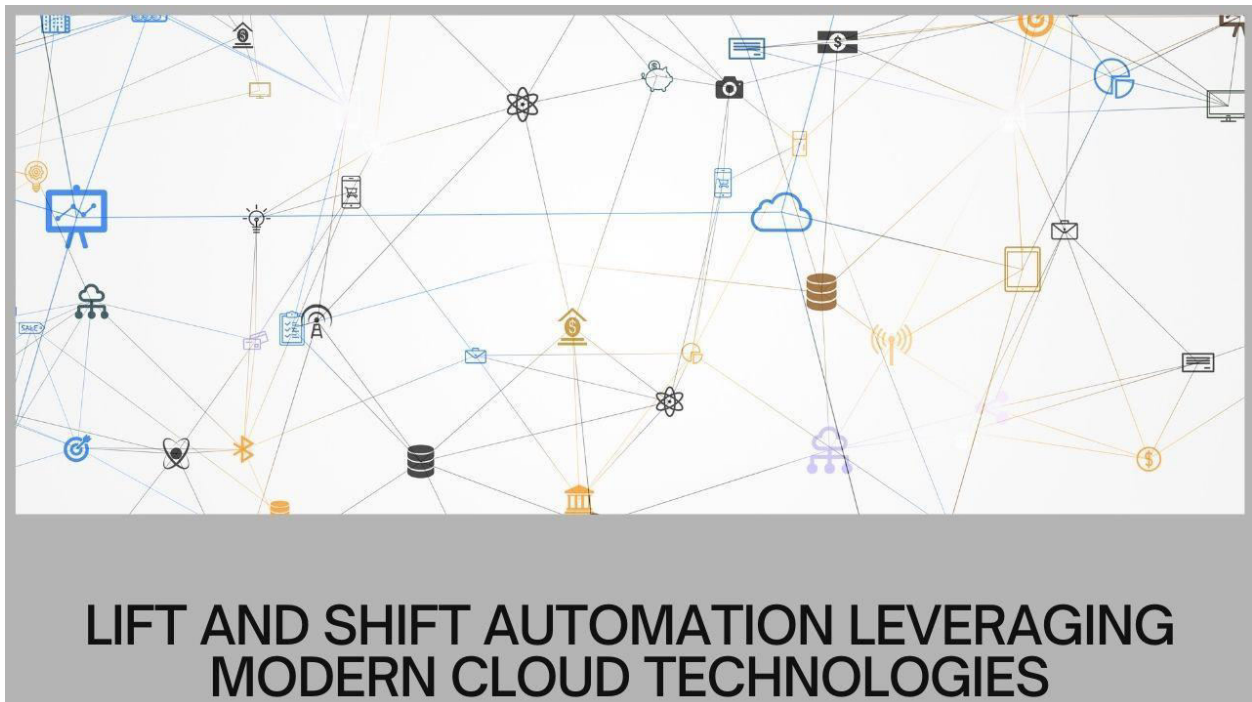
 ijrset@gmail.com

 www.ijrset.com

Lift and Shift Automation: Leveraging Modern Cloud Technologies

Saravana Kumar Nanjappan

Sri Ramakrishna Engineering College, India



ABSTRACT: This article explores the concept of Lift and Shift Automation in cloud migration, detailing the process of transferring on-premises applications and data to cloud platforms with minimal modifications. It examines the challenges associated with manual migrations and presents how modern cloud technologies, leveraging artificial intelligence and machine learning, can automate and streamline the migration process. The paper covers key phases including assessment and planning, migration automation, testing and validation, and post-migration optimization and management. It discusses tools and services offered by major cloud providers such as AWS, Azure, and Google Cloud, and outlines best practices for implementing Lift and Shift Automation successfully.

KEYWORDS: Cloud Migration, Lift and Shift Automation, AI-driven Cloud Tools, Cloud Resource Optimization, Migration Performance Testing

I. INTRODUCTION

In the rapidly evolving landscape of digital transformation, organizations increasingly recognize the need to modernize their IT infrastructure and leverage the scalability, flexibility, and cost-effectiveness. A key strategy in this transition is the "Lift and Shift" approach, which involves migrating existing applications and data from on-premises environments to cloud platforms with minimal modifications [1]. While this approach offers a quick path to cloud adoption, it can be complex, time-consuming, and prone to errors when executed manually.

The complexity of Lift and Shift migrations stems from several factors. First, many organizations have accumulated a diverse array of applications and systems over the years, each with its own set of dependencies and configurations.

Second, the sheer volume of data that needs to be transferred can be staggering, often reaching into the petabytes for large enterprises. Lastly, ensuring business continuity during the migration process adds another layer of complexity, as downtime must be minimized to avoid disrupting critical operations.

However, recent advancements in cloud technologies have paved the way for automating significant portions of the Lift and Shift process. This automation not only accelerates the migration timeline but also reduces the risk of human error and improves the overall efficiency of the transition. Cloud service providers and third-party vendors have developed sophisticated tools and services that leverage artificial intelligence (AI) and machine learning (ML) to streamline various aspects of the migration journey [2].

These automated solutions cover a wide range of functionalities, including:

1. Intelligent discovery and assessment of existing IT assets
2. Automated analysis of application dependencies and compatibility
3. Streamlined data migration with minimal downtime
4. Automated code refactoring for cloud optimization
5. Continuous performance monitoring and cost optimization post-migration

By harnessing these cutting-edge technologies, organizations can overcome many of the traditional challenges associated with cloud migration. This approach not only facilitates a smoother transition to the cloud but also sets the stage for ongoing optimization and innovation in the new cloud environment.

This article delves into the key aspects of Lift and Shift Automation, exploring how modern cloud technologies can be leveraged to streamline the migration process. We will examine the tools and methodologies available for each phase of the migration journey, from initial assessment and planning through to post-migration optimization. By understanding these advanced capabilities, IT leaders and decision-makers can better navigate the complexities of cloud migration and unlock the full potential of their digital transformation initiatives.

II. ASSESSMENT AND PLANNING

The cornerstone of any successful cloud migration strategy, particularly in a Lift and Shift scenario, is a comprehensive assessment of the current IT environment and meticulous planning for the transition. This critical phase sets the foundation for a smooth migration process and helps organizations anticipate potential challenges, optimize resource allocation, and minimize disruptions to business operations [3].

Modern cloud technologies have revolutionized this initial stage by offering sophisticated tools that automate much of the assessment and planning process. These tools leverage advanced algorithms, machine learning, and big data analytics to provide detailed insights into the existing infrastructure and offer data-driven recommendations for the migration strategy.

Automated Discovery and Inventory

One of the most time-consuming and error-prone aspects of traditional migration planning is the manual cataloging of existing IT assets. Cloud providers have addressed this challenge by developing native discovery tools that can automatically inventory applications, databases, and their intricate dependencies within the current environment.

AWS Application Discovery Service

Amazon Web Services (AWS) offers the Application Discovery Service, a powerful tool that automatically collects data about on-premises data centers to create a detailed inventory. This service uses agentless and agent-based options to gather information about server configurations, system performance, running processes, and network connections. The collected data is securely stored in the AWS Migration Hub, providing a centralized location for planning and tracking the migration process [4].

Key features of AWS Application Discovery Service include:

- Automatic dependency mapping
- Server utilization data collection
- Application performance insights

- Integration with AWS Migration Hub for streamlined planning

Azure Migrate

Microsoft's Azure Migrate comprehensively assesses on-premises environments, covering servers, applications, and databases. This tool goes beyond simple inventory by offering performance-based rightsizing, cost planning, and dependency analysis.

Azure Migrate's capabilities include:

- Agentless discovery of VMware and Hyper-V environments
- Performance-based VM sizing recommendations
- Azure readiness analysis
- Cost planning and monthly cost estimates

Google Cloud's Transfer Appliance

While not a discovery tool per se, Google Cloud's Transfer Appliance addresses a crucial aspect of migration planning: data transfer assessment. This hardware solution facilitates large-scale data transfers to Google Cloud, particularly useful for organizations with massive datasets or limited network bandwidth.

The Transfer Appliance helps in planning by:

- Assessing the volume of data to be migrated
- Estimating transfer times and costs
- Providing a secure, offline method for data transfer

Performance and Cost Assessment

Once the inventory is complete, the next critical step is to analyze applications' performance requirements and estimate the costs of running them in the cloud. AI-driven analytics tools have significantly enhanced this process, offering precise insights and recommendations based on historical data and machine learning algorithms.

AWS Compute Optimizer

AWS Compute Optimizer is an AI-powered tool that recommends optimal AWS resources. It analyzes the historical utilization metrics of existing resources and uses machine learning models to recommend optimal AWS instance types, including instance size and family.

Key benefits of AWS Compute Optimizer include:

- Up to 25% reduction in costs through right-sizing recommendations
- Performance risk indicators for each recommendation
- Integration with AWS Organizations for multi-account analysis

Azure Advisor

Azure Advisor is a personalized cloud consultant that provides recommendations to improve the cost-effectiveness, performance, reliability, and security of Azure resources. Its cost management capabilities are particularly relevant for migration planning.

Azure Advisor offers:

- Recommendations for right-sizing or shutting down underutilized virtual machines
- Guidance on reserved instance purchases to optimize costs
- Identification of idle resources that can be eliminated to reduce spending

Google Cloud's Cost Management Tools

Google Cloud provides a suite of cost management tools that help organizations forecast and manage cloud costs with detailed insights and recommendations. These tools are invaluable for planning the financial aspects of a cloud migration.

Google Cloud's cost management capabilities include:

- Detailed billing reports and exports
- Cost forecasting based on historical usage patterns
- Recommendations for cost optimization, including sustained use discounts and committed use contracts

By leveraging these advanced assessment and planning tools, organizations can comprehensively understand their current IT landscape and make data-driven decisions about their cloud migration strategy. This automated approach not only saves time and reduces errors but also provides valuable insights that can lead to significant cost savings and performance improvements in the cloud environment.

Feature	AWS	Azure	Google Cloud
Discovery Tool	Application Discovery Service	Azure Migrate	Transfer Appliance
Dependency Mapping	Yes	Yes	No
Performance Analysis	Yes	Yes	No
Cost Estimation	Yes	Yes	Yes
Agentless Discovery	Yes	Yes	N/A
VM Sizing Recommendations	Yes	Yes	No
Cloud Readiness Analysis	Yes	Yes	No
Data Transfer Assessment	No	No	Yes
AI/ML-powered Recommendations	Yes	Yes	Yes
Multi-account Support	Yes	No	No

Table 1: Feature Analysis of Cloud Migration Assessment Tools: AWS vs Azure vs Google Cloud [3, 4]

III. MIGRATION AUTOMATION

Upon completing the assessment and planning phase, organizations can proceed to the actual migration process. Automation is pivotal in ensuring efficiency, accuracy, and speed in this critical stage. Modern cloud technologies offer a range of sophisticated tools that automate various aspects of the migration process, from code refactoring to data transfer [5].

Automated Code Refactoring

One key challenge in cloud migration is adapting existing code to run optimally in cloud environments. Manual code refactoring can be time-consuming and error-prone, especially for large-scale applications. Automated code refactoring tools leverage artificial intelligence and machine learning to analyze code, identify potential improvements, and even implement changes automatically.

AWS CodeGuru

Amazon's AWS CodeGuru is an ML-powered service that provides intelligent recommendations for improving code quality and identifying the most expensive lines of code in terms of performance or cost. It consists of two main components:

1. CodeGuru Reviewer: Uses program analysis and machine learning to detect potential defects and suggest improvements.
2. CodeGuru Profiler: Helps understand the runtime behavior of applications, including identifying the most expensive lines of code.

Key features of AWS CodeGuru include:

- Automated code reviews for Java and Python applications
- Integration with popular IDEs and source control systems
- Continuous profiling to identify performance bottlenecks
- Cost optimization recommendations for AWS resource usage

Azure DevOps

Microsoft's Azure DevOps provides a comprehensive set of development tools that integrate seamlessly with various code analysis and refactoring solutions. While not a standalone refactoring tool, Azure DevOps facilitates automated code improvements through its CI/CD pipeline integration capabilities.

Azure DevOps supports code refactoring automation through:

- Integration with static code analysis tools like SonarQube
- Customizable build and release pipelines that can incorporate refactoring steps
- Extension marketplace offering various code quality and refactoring tools
- Built-in code review features that can be augmented with automated checks

Google Cloud Code

Google Cloud Code is a set of IDE plugins that assists developers in writing, running, and debugging cloud-native applications. While it doesn't provide automated refactoring out of the box, it offers tools that streamline the process of adapting code for cloud environments.

Google Cloud Code features include:

- Integration with popular IDEs like Visual Studio Code and IntelliJ
- Built-in support for Kubernetes and Cloud Run development workflows
- Easy local development and debugging of cloud-native applications
- Streamlined deployment to Google Cloud services

IV. DATA MIGRATION AUTOMATION

Data migration is often the most time-consuming and complex aspect of cloud migration. Automated data migration tools can significantly accelerate this process while minimizing the risk of data loss or corruption [6].

AWS Data Migration Service (DMS)

AWS Data Migration Service is a cloud service that enables easy and secure migration of databases to AWS. It supports both homogeneous migrations (e.g., Oracle to Oracle) and heterogeneous migrations (e.g., Oracle to Amazon Aurora).

Key features of AWS DMS include:

- Support for widely used database platforms as sources and targets
- Continuous data replication with minimal downtime
- Built-in data validation to ensure data integrity
- Automatic schema conversion for heterogeneous migrations

Azure Data Factory

Azure Data Factory is a cloud-based data integration service that allows you to create data-driven workflows for orchestrating data movement and transforming data at scale. While not exclusively a migration tool, it's powerful for automating large-scale data transfers to Azure.

Azure Data Factory offers:

- Visual tools for building data pipelines without coding
- Support for on-premises and cloud data sources
- Integration with Azure services like Azure Databricks for complex transformations
- Monitoring and management capabilities for data pipelines

Google Cloud Data Transfer Service

Google Cloud provides several services for automating data transfers, collectively known as Data Transfer Service. These tools facilitate secure and efficient movement of data into Google Cloud storage services.

Google Cloud Data Transfer Service includes:

- Storage Transfer Service: For large-scale online data transfers
- Transfer Appliance: A hardware solution for offline data transfer
- BigQuery Data Transfer Service: Automates data movement into BigQuery

By leveraging these automated migration tools, organizations can significantly reduce the time, effort, and risk associated with cloud migration. These technologies not only speed up the process but also ensure higher accuracy and reliability in both code refactoring and data migration tasks.

Feature	AWS	Azure	Google Cloud
Code Refactoring Tool	CodeGuru	Azure DevOps	Cloud Code
ML-powered Code Analysis	Yes	Partial (via integrations)	No
Automated Code Reviews	Yes	Yes	No
IDE Integration	Yes	Yes	Yes
CI/CD Pipeline Integration	Yes	Yes	Yes
Performance Profiling	Yes	Yes	No
Data Migration Service	AWS DMS	Azure Data Factory	Data Transfer Service
Homogeneous Migration Support	Yes	Yes	Yes
Heterogeneous Migration Support	Yes	Yes	Yes
Visual Data Pipeline Tools	Yes	Yes	No
Offline Data Transfer Solution	Yes	No	Yes (Transfer Appliance)

Table 2: Feature Analysis of Cloud Migration Automation: AWS vs Azure vs Google Cloud [5, 6]

V. TESTING AND VALIDATION

After the migration process is complete, thorough testing and validation are crucial steps to ensure that all systems and applications are functioning as expected in the new cloud environment. This phase is critical for identifying and resolving any issues that may have arisen during the migration, ensuring optimal performance, and maintaining business continuity [7].

Automated Testing

Traditional manual testing methods are often insufficient for the scale and complexity of cloud-based systems. AI-powered testing tools have emerged as a solution, offering the ability to perform automated functional and performance testing of applications with unprecedented efficiency and accuracy.

Test.ai

Test.ai is an innovative platform that leverages artificial intelligence to automate mobile app testing. Its key features include:

- AI-driven test creation and execution
- Automatic adaptation to UI changes, reducing test maintenance
- Cross-platform testing capabilities (iOS and Android)
- Integration with popular CI/CD tools

Test.ai's AI-powered approach allows it to understand the context and purpose of UI elements, enabling it to navigate through applications and identify issues even when the interface changes. This adaptability is particularly valuable in cloud environments where frequent updates and deployments are common.

Applitools

Applitools is a visual testing and monitoring solution that uses AI to detect UI changes and anomalies. Its key capabilities include:

- Visual AI technology for detecting visual regressions
- Cross-browser and cross-device testing
- Automated maintenance of visual tests
- Integration with major test automation frameworks

Applitools' AI-driven approach to visual testing is particularly useful in cloud migrations, where ensuring consistent user experience across different platforms and devices is crucial. The tool can quickly identify visual discrepancies that traditional functional testing methods might miss.

Performance Monitoring

Continuous application performance monitoring is essential in cloud environments, where resources are often dynamically allocated and user traffic can be highly variable. AI-based monitoring solutions offer real-time insights and proactive issue detection capabilities [8].

AWS CloudWatch

Amazon CloudWatch is a monitoring and observability service designed for DevOps engineers, developers, site reliability engineers (SREs), and IT managers. Key features include:

- Collection and tracking of metrics, logs, and events
- Automated dashboards
- Alarms and automated actions based on predefined thresholds
- Integration with other AWS services for comprehensive monitoring

CloudWatch's machine learning-powered anomaly detection can automatically analyze metrics, determine normal baselines, and surface anomalies with minimal user intervention. This capability is particularly valuable for detecting subtle performance issues that might arise after migration.

Azure Monitor

Microsoft's Azure Monitor is a comprehensive solution for collecting, analyzing, and acting on telemetry from cloud and on-premises environments. Its features include:

- Application Insights for web app monitoring
- Container Insights for container environments
- AI-driven smart alerts and automated actions
- Integration with Azure Automation for complex remediation tasks

Azure Monitor's AI-powered features, such as smart alerts, can help quickly identify and diagnose issues in complex, distributed cloud applications. Its ability to correlate data across multiple Azure services provides a holistic view of application health and performance.

Google Cloud Operations Suite

Formerly known as Stackdriver, the Google Cloud Operations Suite provides monitoring, logging, and diagnostics for applications deployed on Google Cloud and other environments. Key capabilities include:

- Error reporting and debugging tools
- Uptime and health checks
- Trace analysis for distributed systems
- AI-powered log analysis and alerting

The suite's AI-driven log analysis can automatically identify patterns and anomalies in log data, helping to pinpoint issues that may arise after migration quickly. Its ability to trace requests across distributed systems is particularly valuable for understanding performance in complex cloud architectures.

By leveraging these advanced testing and monitoring tools, organizations can ensure the success of their cloud migration efforts beyond the initial transfer of resources. These tools provide the visibility and insights needed to optimize performance, maintain security, and deliver a seamless user experience in the new cloud environment.

VI. OPTIMIZATION AND MANAGEMENT

After successful migration to the cloud, the journey is far from over. Ongoing optimization and management are crucial for maintaining peak performance, ensuring security, and controlling costs in the dynamic cloud environment. This phase is where organizations can truly leverage the flexibility and scalability of cloud computing to drive business value [9].

Resource Optimization

One of the primary advantages of cloud computing is the ability to adjust resources based on demand dynamically. Cloud providers offer sophisticated tools that use artificial intelligence (AI) and machine learning (ML) to optimize resource allocation based on usage patterns, ensuring that you're always using the right amount of resources at the right time.

AWS Auto Scaling

Amazon Web Services (AWS) Auto Scaling monitors your applications and automatically adjusts capacity to maintain steady, predictable performance at the lowest possible cost. Key features include:

- Application Auto Scaling for services like Amazon ECS and Amazon DynamoDB
- EC2 Auto Scaling for managing Amazon EC2 instances
- Predictive scaling using machine learning to forecast traffic and proactively adjust capacity

AWS Auto Scaling uses machine learning algorithms to analyze historical data and predict future traffic patterns, allowing for proactive scaling decisions that can significantly improve application performance and reduce costs.

Azure Autoscale

Microsoft Azure's Autoscale service provides automatic scaling of Azure resources based on predefined rules and metrics. Its capabilities include:

- Schedule-based scaling for predictable workloads
- Metric-based scaling for dynamic workloads
- Customizable scaling rules and notifications
- Integration with Azure Monitor for comprehensive insights

Azure Autoscale leverages AI-driven insights from Azure Monitor to make intelligent scaling decisions, helping to optimize resource utilization and maintain application performance even under varying load conditions.

Google Cloud Autoscaler

Google Cloud's Autoscaler automatically adds or removes instances of an application based on traffic demands. Its features include:

- Multiple scaling modes (CPU utilization, load balancing capacity, monitoring metrics)
- Custom metric-based autoscaling
- Stackdriver integration for advanced monitoring and alerting
- Support for both regional and zonal instance groups

Google Cloud Autoscaler uses advanced algorithms to predict traffic patterns and adjust resources accordingly, helping to ensure optimal performance while minimizing costs.

Cost Management

As cloud environments grow in complexity, managing and optimizing cloud spending becomes increasingly challenging. Cloud providers offer dedicated cost management tools that provide detailed insights and recommendations for optimizing cloud expenses [10].

AWS Cost Explorer

AWS Cost Explorer is a tool that enables you to visualize, understand, and manage your AWS costs and usage over time. Key features include:

- Detailed cost breakdowns by service, account, and custom tags
- Cost forecasting based on historical data and machine learning
- Savings Plans recommendations for committed use discounts
- Anomaly detection for unusual spending patterns

AWS Cost Explorer's machine learning-powered forecasting and anomaly detection capabilities help organizations proactively manage their cloud spending and identify opportunities for optimization.

Azure Cost Management and Billing

Microsoft's Azure Cost Management and Billing is a suite of tools that provide detailed insights and recommendations for managing Azure costs. Its capabilities include:

- Cost analysis and budgeting tools
- Anomaly detection and alerts for unexpected spending
- Recommendations for cost optimization
- Integration with Azure Advisor for holistic optimization guidance

Azure Cost Management uses AI and machine learning to analyze spending patterns and provide tailored recommendations for cost optimization, helping organizations maximize the value of their cloud investments.

Google Cloud Billing Reports

Google Cloud offers a range of billing and cost management tools, including detailed Billing Reports. Features of these tools include:

- Customizable dashboards for visualizing spending
- Forecasting and budgeting capabilities
- Recommendations for cost optimization
- Integration with BigQuery for advanced cost analysis

Google Cloud's cost management tools leverage machine learning to provide accurate forecasts and identify optimization opportunities, enabling organizations to maintain control over their cloud spending. By leveraging these advanced optimization and management tools, organizations can ensure that their cloud environments remain efficient, cost-effective, and aligned with business objectives long after the initial migration. These tools provide the insights and automation necessary to continuously optimize resource allocation and manage costs in the ever-evolving cloud landscape.

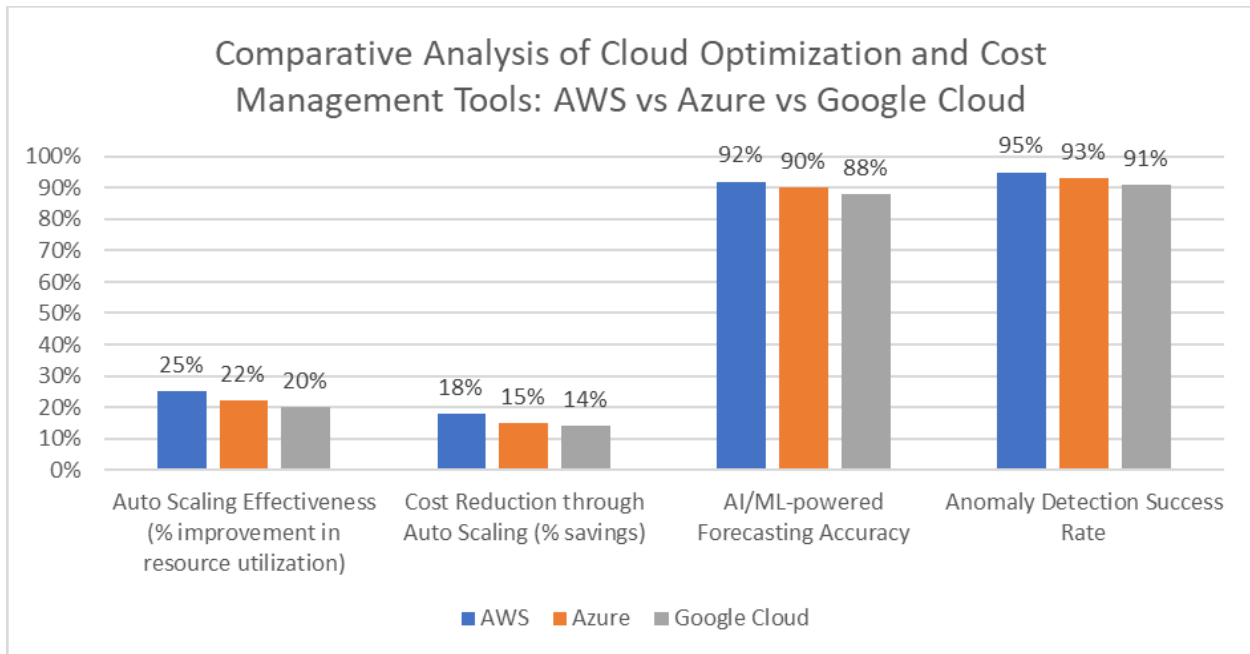


Fig. 1: Effectiveness Metrics of Resource Optimization and Cost Control Solutions Across Major Cloud Providers [9, 10]

VII. BEST PRACTICES FOR LIFT AND SHIFT AUTOMATION

The success of a Lift and Shift automation process in cloud migration hinges on careful planning, execution, and ongoing management. By adhering to best practices, organizations can minimize risks, optimize resources, and ensure a smooth transition to the cloud environment [11]. Here are key best practices to consider:

Pilot Testing

Implementing a small-scale pilot migration is a crucial first step in the Lift and Shift automation process. This approach allows organizations to test their automation tools and processes in a controlled environment before scaling up to larger, more critical systems.

Benefits of Pilot Testing:

- Identifies potential issues early in the migration process
- Provides an opportunity to refine automation scripts and workflows
- Helps in estimating time and resource requirements for full-scale migration
- Builds confidence and expertise within the migration team

Implementing Pilot Testing:

- Select a non-critical application or dataset for the pilot
- Define clear success criteria and metrics for the pilot
- Document all steps, challenges, and solutions during the pilot
- Conduct a thorough post-pilot review to incorporate lessons learned

Continuous Monitoring

Regular monitoring of automated processes and tools is essential to ensure they are functioning correctly and efficiently. This practice helps in identifying and addressing issues promptly, maintaining optimal performance, and making necessary adjustments as the migration progresses.

Key Aspects of Continuous Monitoring:

- Real-time performance tracking of automated tools and processes
- Automated alerts for anomalies or failures
- Regular audits of automation scripts and workflows
- Continuous feedback loop for process improvement

Implementing Continuous Monitoring:

- Utilize cloud-native monitoring tools provided by your cloud service provider
- Implement custom monitoring solutions for specific automation processes
- Establish a dedicated team or role for overseeing monitoring activities
- Develop and maintain a comprehensive dashboard for visualizing key metrics

Leverage Cloud Provider Services

To maximize the benefits of automation in Lift and Shift migrations, it's crucial to fully utilize the suite of tools and services provided by cloud providers. These native services are often optimized for the specific cloud environment and can significantly enhance the efficiency and effectiveness of the migration process [12].

Advantages of Leveraging Cloud Provider Services:

- Seamless integration with the target cloud environment
- Regular updates and improvements from the cloud provider
- Potential cost savings compared to third-party solutions
- Access to provider-specific best practices and support

Key Services to Consider:

- Migration planning and assessment tools
- Automated discovery and dependency mapping services
- Data transfer and synchronization services
- Automated testing and validation tools
- Cost management and optimization services

Implementing Cloud Provider Services:

- Conduct a thorough assessment of available services from your chosen cloud provider
- Align service selection with your specific migration requirements and goals
- Invest in training for your team to effectively use these services
- Regularly review and update your service usage based on changing needs and new offerings

Adhering to these best practices can significantly enhance the success of organizations' Lift and Shift automation efforts. Pilot testing provides a safe environment to refine processes, continuous monitoring ensures ongoing optimization, and leveraging cloud provider services maximizes efficiency and effectiveness. These practices form a robust framework for successful cloud migration and long-term cloud operations management.

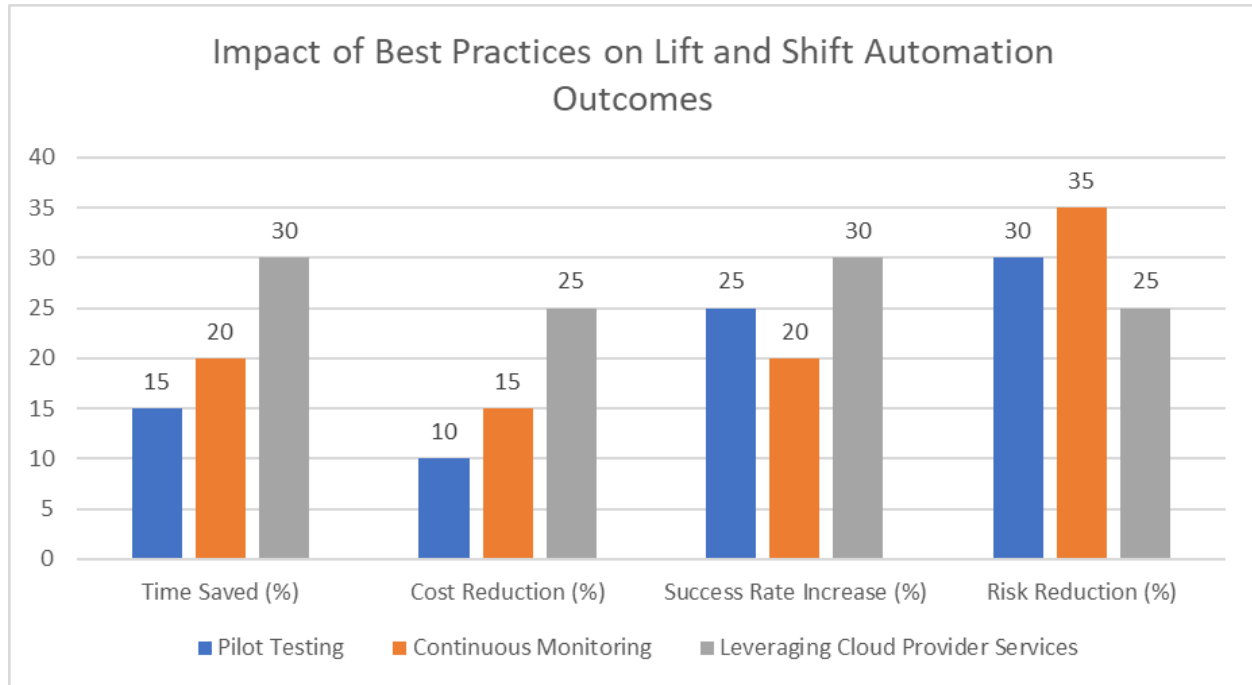


Fig. 2: Quantitative Benefits of Implementing Best Practices in Cloud Migration [11, 12]

VIII. CONCLUSION

Lift and Shift Automation represents a significant advancement in cloud migration strategies, offering organizations a more efficient, accurate, and cost-effective path to cloud adoption. By leveraging AI-driven tools for assessment, migration, testing, and ongoing management, businesses can overcome traditional migration challenges and fully capitalize on the benefits of cloud computing. The best practices of pilot testing, continuous monitoring, and leveraging cloud provider services form a robust framework for successful migration and long-term cloud operations. As cloud technologies evolve, Lift and Shift Automation will likely play an increasingly crucial role in enabling digital transformation and driving business innovation in the cloud era.

REFERENCES

- [1] P. V. Beserra et al., "Cloudstep: A Step-by-Step Decision Process to Support Legacy Application Migration to the Cloud," in 2012 IEEE 6th International Workshop on the Maintenance and Evolution of Service-Oriented and Cloud-Based Systems (MESOCA), 2012, pp. 7-16. [Online]. Available: <https://ieeexplore.ieee.org/document/6392602>
- [2] A. Iosup et al., "Massivizing Computer Systems: A Vision to Understand, Design, and Engineer Computer Ecosystems Through and Beyond Modern Distributed Systems," in 2018 IEEE 38th International Conference on Distributed Computing Systems (ICDCS), 2018, pp. 1224-1237. [Online]. Available: <https://ieeexplore.ieee.org/document/8416385>
- [3] T. Yarygina and A. H. Bagge, "Overcoming Security Challenges in Microservice Architectures," in 2018 IEEE Symposium on Service-Oriented System Engineering (SOSE), 2018, pp. 11-20. [Online]. Available: <https://ieeexplore.ieee.org/document/8359144>
- [4] S. Balaji and S. Murugaiyan, "Waterfall vs. V-Model vs. Agile: A comparative study on SDLC," International Journal of Information Technology and Business Management, vol. 2, no. 1, pp. 26-30, 2012. [Online]. Available: <https://mediaweb.saintleo.edu/Courses/COM430/M2Readings/WATEERFALLVs%20V-MODEL%20Vs%20AGILE%20A%20COMPARATIVE%20STUDY%20ON%20SDLC.pdf>
- [5] P. Jamshidi, C. Pahl, and N. C. Mendonça, "Pattern-based multi-cloud architecture migration," Software: Practice and Experience, vol. 47, no. 9, pp. 1159-1184, 2017. [Online]. Available: <https://onlinelibrary.wiley.com/doi/10.1002/spe.2442>

- [6] A. A. Nemat, A. Md Said, and S. A. Mahmud, "A Survey of Cloud Migration Methods: A Comparison and Proposition," in 2020 14th Malaysian Technical Universities Conference on Engineering and Technology (MUCET), 2020, pp. 1-6. [Online]. Available: <https://pdfs.semanticscholar.org/9e2f/0b71d4d4e1b13b568cc3a743ff034a847bf8.pdf>
- [7] M. Pahl, P. Jamshidi, and O. Zimmermann, "Architectural Principles for Cloud Software," in ACM Transactions on Internet Technology, vol. 18, no. 2, pp. 1-23, 2018. [Online]. Available: <https://dl.acm.org/doi/10.1145/3104028>
- [8] C. Qu, R. N. Calheiros, and R. Buyya, "Auto-scaling Web Applications in Clouds: A Taxonomy and Survey," ACM Computing Surveys, vol. 51, no. 4, pp. 1-33, 2018. [Online]. Available: <https://dl.acm.org/doi/10.1145/3148149>
- [9] A. Benlian, M. Klumpe, and N. Hinz, "Mitigating the intrusive effects of smart home assistants by using anthropomorphic design features: A multimethod investigation," Information Systems Journal, vol. 30, no. 6, pp. 1010-1042, 2020. [Online]. Available: <https://onlinelibrary.wiley.com/doi/full/10.1111/isj.12243>
- [10] R. Buyya et al., "A Manifesto for Future Generation Cloud Computing: Research Directions for the Next Decade," ACM Computing Surveys, vol. 51, no. 5, pp. 1-38, 2018. [Online]. Available: <https://dl.acm.org/doi/10.1145/3241737>
- [11] P. Jamshidi, A. Ahmad, and C. Pahl, "Cloud Migration Research: A Systematic Review," IEEE Transactions on Cloud Computing, vol. 1, no. 2, pp. 142-157, July-December 2013. [Online]. Available: <https://ieeexplore.ieee.org/document/6624108>
- [12] A. N. Toosi, R. N. Calheiros, and R. Buyya, "Interconnected Cloud Computing Environments: Challenges, Taxonomy, and Survey," ACM Computing Surveys, vol. 47, no. 1, pp. 1-47, 2014. [Online]. Available: <https://dl.acm.org/doi/10.1145/2593512>



INTERNATIONAL
STANDARD
SERIAL
NUMBER
INDIA



INTERNATIONAL JOURNAL OF INNOVATIVE RESEARCH

IN SCIENCE | ENGINEERING | TECHNOLOGY

 9940 572 462  6381 907 438  ijirset@gmail.com



www.ijirset.com

Scan to save the contact details