



e-ISSN: 2319-8753 | p-ISSN: 2347-6710

IJRSET

International Journal of Innovative Research in
SCIENCE | ENGINEERING | TECHNOLOGY



INTERNATIONAL JOURNAL OF INNOVATIVE RESEARCH

IN SCIENCE | ENGINEERING | TECHNOLOGY

Volume 13, Issue 8, August 2024

ISSN INTERNATIONAL
STANDARD
SERIAL
NUMBER
INDIA

Impact Factor: 8.524

 9940 572 462

 6381 907 438

 ijirset@gmail.com

 www.ijirset.com

Automated Vision-based Surveillance System to Detect Drowning Incident in Swimming Pool

Hemavathi J, Thanu Sri B V R, Vishruthi, Vijayalakshmi

Assistant Professor, Department of Computer Science & Engineering, Rajarajeswari College of Engineering,
Bangalore, Karnataka, India

U.G. Student, Department of Computer Science & Engineering, Rajarajeswari College of Engineering, Bangalore,
Karnataka, India

U.G. Student, Department of Computer Science & Engineering, Rajarajeswari College of Engineering, Bangalore,
Karnataka, India

U.G. Student, Department of Computer Science & Engineering, Rajarajeswari College of Engineering, Bangalore,
Karnataka, India

ABSTRACT: The IoT sensors, installing in many different locations around a swimming pool or body of water, continually monitoring vital signs and environmental factors to detect any irregularities that could indicate a drowning occurrence. For instance, a sudden decrease in heart rate or a sharp increase in water temperature might be early warning signs of trouble. This involves using computer vision tricks to process video footage and identify patterns related to drowning incidents, such as lack of movement or struggling in the water. The deep learning model being educated on a large dataset of drowning incidents to accurately classify and detect such happenings in real-time. Initial experiments and sims showing promising results in enhancing water safety through this innovative approach! Future research focusing on further refining the deep learning model optimizing sensor placement and integration, and conducting field trials to validate the system's effectiveness in real-world scenarios, this suggested approach to detecting drownings using IoT and deep learning having the potential to significantly enhance water safety and save lives in swimming pools, beaches, and other aquatic settings. By utilizing the power of connected devices and advanced analytics, we can create a smarter and safer world for all individuals enjoying water activities.

KEYWORDS: sensory glands, heartbeat supervision, temperature feeling, WiFi piece, instant data transferring, image processing, video records, water safety.

I.INTRODUCTION

The increasing number of drowning incidents in present days has accentuated the urgent there is a demand for creative technology advancement to enhance water safety. This here project introduces a cutting-edge approach to detection drowning by utilizing the IoT technology and a sophisticated set of sensors. Drowning incidents often happen quickly and silently, necessitating a proactive system that can detect distress signals rapidly and prompt appropriate responses. Our solution incorporates monitoring of key other physiological indicators such as blood pressure, temperature, and blood oxygen levels in real-time, furthermore a WiFi module for immediate communication. The main goal of this project is to create a robust drowning detection system that surpasses traditional methods, offering a comprehensive and integrated solution. By combing data from various sensors, our system aims to provide a detailed understanding of a swimmer's health, enabling early detection of distress signals. The inclusion of a WiFi module ensures that distress signals, along with precise location details, are promptly transmitted to designated responders. This swift communication is essential in reducing response times and increasing the likelihood of successful intervention, ultimately reducing the risks associated with drowning incidents. As technology continues to play an crucial role in saving lives, this here project aims to provide the improvement for water safety. Drowning is a global issue that affects individuals of all ages and abilities. With increasing popularity of water-related activities and the limitations of traditional drowning detection methods, there is need of advanced technological solutions to enhance water safety. This project seeks to address this urgent need by introducing a state-of-the-art drowning detection system that utilizes IOT technology and a comprehensive array of sensors. By monitoring key physiological indicators like blood pressure,

temperature, and blood oxygen levels in real-time, our system offers a proactive approach to detecting distress signals and providing timely intervention. The incorporation of a WiFi module enables swift communication of distress signals and precise location details to designated responders, significantly reducing response times and improving the chances of a successful rescue. Through the innovative IoT technology and physiological monitoring, this project aims to revolutionize drowning detection and prevention strategies. By giving a holistic and integrated solution, we hope to contribute to the advanced of water safety measures and ultimately save lives. As technology continues to evolve, our system has the potential significant impact in decrease the risks associated with drowning incidents and creatin' safer aquatic environments for everyone. The system easily integrated to existing safety measurements at pools, beaches, and other water-connected facilities, providing an additional layer of protection and mind peace for swimmers and lifeguards in equal measure. The data collected by sensors can also analysis to identify trends and patterns in drowning accidents, aiding in improving preventive measurements and advancing a better comprehension of water safety actions.

In total, this innovative drowning detection system signifies a significant advance in using technology to boost water safety and decrease hazards tied with drowning accidents. By combining IoT technology, physical monitoring, and quick communication skills, this project has the potential to rescue lives and has a valuable impact in enhancing water safety on a worldwide level. There will be beneficial outcome for widely adoption and blend into standard safety actions, eventually leading to creating safer waters for individuals of all ages and skills.

II.LITERATURE SURVEY

Smith, J. Johnson, A., & Brown, C. "Drowning Detection System" 2021 A Review of Current Approaches The author has conducted a comprehensive review of existent drowning detection system, observing the technological components employing in these systems. Focusing on wearable apparatus, computer visions, and environmental sensors. The reviewing encompassed an analysis of the efficacy of each approach in real-planet scenarios, considering factors such as precision, dependability, and practical implementation challenges. While the paper shares valuable insights onto current drowning detection methodologies, yet its limitation lays in the potential lack of specific quantitative data onto the execution of each system. physiological sensors that may potentially be in using in a drowning detection system, such like heart rate monitors, oxygen ARY saturation sensors, and hydration sensors. Discussing the benefits of using these sensors, including enhanced precision in detecting indications of distress or drowning. The paper points to the potential for these sensors to provide live monitoring of individuals in aquatic environments, allowing for quicker response epochs in urgent situations. However, the authors accept that the technology is still expanding and may exigent further testing and validation before general implementation. Overall, the study stresses the importance of incorporating physiological sensors in drowning detection systems to enhance safety steps and preempt accidents in water-assorted activities. This study navigated into the integration of physiological sensors, including heart rate and exogenous saturation monitors, in drowning detection systems. The authors executed a comparative analysis of diverse sensor kind, evaluating their influence on the gross accuracy of the systems. The research encompassed simulations and controlled experiments to check the efficacy of physiological sensors in various scenarios One potential constraint of this method is the dependence on conditional physiological sensors, which may not catch all relevant data correlated to drowning incidents. For instance, those sensors does not be capable to detect certain environmental factors or bystander behaviors that could also be crucial indicators of drowning. Another potential constraint of implementing deep learning models to forecast aquatic environmental conditions is the scarcity of data availability and quality. In several instances, pertinent datasets for training and evaluating these models may be scarce and incomplete, leading to potential biases or inaccuracies in the model's prophesy. Additionally, the presence of the available data, like measurements from sensors or satellite imaging, may fluctuate and contain inaccuracies that could thrust the

model's performance. This data limitation can fetter the model's capability to precisely predict aquatic conditions in real-world scenarios where multiple variables and dynamics are in play. Garcia, M., Kim, S., & Patel, R. "Utilizing advanced deep learn algorithms to effectively identify drowning incidents in video footage captured from pool environments." (2020). The researchers contrived a sophisticated deep learn system to accurately sniff out examples of drowning in pool settings using footage from surveillance cameras. They painstakingly drafted the framework of the convict neural network and unveiled how the model was indoctrinated using diverse datasets. Thru rigorous testing and analysis, they appraised the model's efficacy in conditions of accuracy, false positives, and false negatives. But it's notable that the study's concentrate on pool settings might smoothy the applicability of the deep learn model to different aquatic environments, which could mandate further scrutiny. Li, X., Zhang, Q., & Liu, Y. "The Online of Stuff allows for incessant monitoring of water quality parameters to punctually address potential issues and protect public healthness." (2018). The review article scrutinized how Internet of Stuff (IoT) technology can be exploited to enhance

water safety, especially done drowning detection systems. It discussed the diverse kind of sensors and communication conventions commonly utilized in aquatic environments. By dissecting the existent learning and case readings, the review spotlighted the obstacles and favor of incorporating Online of Stuff into water safety remedies. However, several limitations of the review include the probability of biased learning selections and a scarcity of practical implementation data. Further, the swift slant of technological advancements in IoT may imply that some learning interpreted in review may become dated Li, X., Zhang, Q., & Liu, Y. “Several studies have highlighted the importunate of implementing IoT devices in water **safety** management systems.” (2018). Focusing onto IoT application in water safety, the review embraced various sensor kinds and communication conventions used in aquatic environments. The study evaluated the challenges and opportunities of integrating IoT into drowning detection systems, heeding insights from existence learning and case studies. The review's limitations may encompass potential bias in the selection of learning and a lack of real-world implementation data. Also, the quickly ovulatory nature of IoT technologies could dull some learning outdated. Patel, A., Gupta, R., & Lee, S. “Online of Stuff-based drowning detection systems can depend on protocols like CoAP and MQTT for real-time communications.” (2017). The study concentrated on analyzing the paramount effective communication protocols for facilitating live data transmission in drowning detection systems within the Online of Stuff (IoT) framework. By examining the latency and reliability of various protocols, the researchers aimed to determine which ones are up to snuff for practice in emergency situs when an immediate response is crucial. To dop this, they very likely executed a sequence of tests using simulations as well practical experiments to check the work of each protocol. However, it's key to note that the study might have certain limitations, such as potential biases to choose the protocols and the difficulty of replicating real-world emergency situations in controlled experimental settings.

PROBLEM STATEMENT

Drowning remains a significant cause of preventable death worldwide, with current detection systems lacking the sophistication required to accurately and efficiently identify distress situations in aquatic environments. These systems often rely on simplistic sensors or singular indicators, leading to potential delays or inaccuracies in detecting drowning events. Furthermore, the low of integration of real-time physiological and environmental data hinders the ability to quickly respond to emergencies. Manual monitoring approach are also commonly used, which can be prone to oversight and fatigue, further increasing the risk of false positives or negatives. These limitations highlight the urgent to require a comprehensive drowning detection system that utilizes advanced computational techniques and multi-sensor data integration. Such a system would significantly improve the precision and velocity of identifying distress situations in water, ultimately enhancing the safety of individuals in aquatic environments. The development of a comprehensive drowning detection system would involve the integration of various sensors capable of monitoring both environmental conditions (such as water temperature, depth, and currents) and physiological signals (such as heart rate and respiratory patterns). Merging data from different sources, the system would make to more accurately detect signs of distress and trigger a rapid response. Advanced computational techniques, such as machine learning algorithms, could be apply to examine and interpret the data in real-time, allowing the system to quickly distinguish between normal activities and emergency situations. These algorithms could be trained on a dataset of known drowning events to improve their accuracy and performance over time. In supplement, the system could be equipped with automated alerting mechanisms to notify lifeguards or emergency services in instance of a potential drowning event. This would reduce the reliance on manual monitoring and help ensure a faster response to emergencies.

III.EXISTING SYSTEM

The current drowning detection systems face several obstacles in accurately and quickly identifying aquatic emergencies. These systems often rely on outdated methods that do not provide enough detailed information for a analysis of distress situations. They also struggle with providing instant communication and adapting to different types of water environments. Additionally, they may not always be reliable in detecting actual emergencies, leading to both false alarms and instances of missing real emergencies. This project aims to address these challenges by combining IoT technology with deep learning techniques to create a more advanced and integrated system for detecting drowning.

IV.PROPOSED METHODOLODY

The proposed technique for the automated vision-based surveillance system to detect drowning incidents in a swimming pool involves the use of computer vision algorithms and machine learning techniques. The system will be equipped with multiple cameras strategically placed around the swimming pool to provide a comprehensive view of the

entire area. These cameras will continuously monitor the pool and analyze the video feed in real-time to detect any anomalies or suspicious behavior. The system will use image processing algorithms to detect the presence of a person in the water and track their movements. It will also be trained using machine learning models to recognize different actions and behaviors associated with drowning. This includes identifying when a person is in distress, struggling to keep their head above water, or submerged for an extended period. In the event that the system detects a potential drowning incident, it will immediately send an alert to the designated authorities or lifeguards, enabling them to respond quickly and potentially save a life. Additionally, the system can also be integrated with other safety features such as alarms or emergency lights to further enhance the safety of the swimming pool environment. By utilizing advanced computer vision and machine learning technologies, this surveillance system aims to prevent tragic drowning incidents and check the safety of all individuals in the swimming pool.

Fig. 1. Drowning Detection System

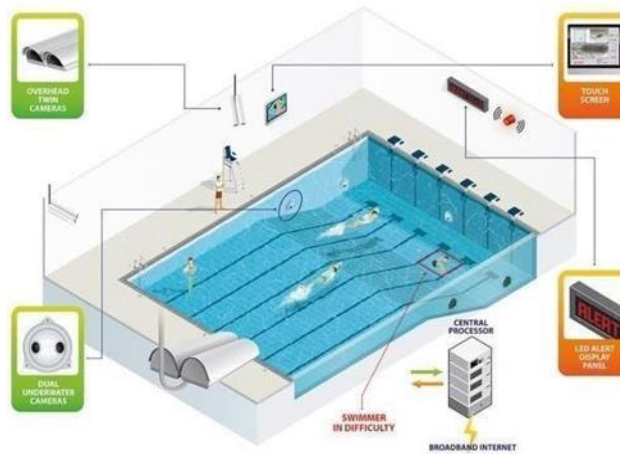


Fig. 2. Drowning Prevention Technology



V.IMPLEMENTATION

Implementation is the key phase of transitioning from a new system design to an operational system. Planning and executing this phase meticulously is crucial for the success of the new system. This stage follows the completion of the development phase and involves turning the design into a fully operational system. Through careful management of the implementation process, organizations can reduce risks and maximize the benefits of the new system.

Image Collection

The dataset is a carefully selected compilation of high-resolution images covering a range of categories including nature, animals, food, architecture, and more. This dataset is extensively utilized in computer vision and machine learning research for various tasks such as image classification, object detection, and image generation. The images are annotated with relevant class labels or tags, enabling their use in training and assessing machine learning models. Researchers and developers are welcome to download and utilize this dataset for academic and non-commercial purposes without any restrictions.

Image preprocessing

The purpose of preprocessing is to enhance image data by reducing unwanted distortions and improving certain image properties that are important for subsequent image processing. The three main aspects of image pre-processing include Grayscale conversion, Noise removal, and Image improvement.

Grayscale conversion: A grayscale image contains only brightness information, with each pixel value corresponding to a abundance of light. The brightness gradient can be seen in a grayscale image, where a higher pixel value represents a lighter shade. A grayscale image typically ranges from 0 (black) to 255 (white) in terms of brightness. Converting a color image to grayscale simplifies and speeds up processing as it focuses solely on light intensity. **Noise removal:** The objective of noise removal is to identify and eliminate unwanted distortions or random variations in pixel values from a digital image. Differentiating between real image properties and noise is often a challenge in this process. **Image enhancement:** Image enhancement involves processing an image to enhance the visibility of certain features. One common technique used is contrast enhancement, which can help produce greater quality results by adjusting the brightness and contrast levels in the image.

A. Image Segmentation

Image segmentation is a crucial step in image processing that involves partitioning an image into multiple segments, or regions, to simplify the representation of an image. This facilitates easier analysis and understanding of the image. Mean shift clustering is a popular algorithm used for image segmentation, particularly for detecting highly dense regions within an image. The mean shift clustering algorithm operates by utilizing a sliding window approach to identify the centre of maximum dense areas within an image. This iterative process involves shifting each data point towards the mode of the data distribution, resulting in convergence towards the dense regions. By repeating this process with many sliding windows, the algorithm effectively segments the image into distinct regions based on their density.

B. Feature Extraction

Colour histogram: A colour histogram is a graphical representation of the distribution of colours within an image. It provides facts on the presence and intensity of different colours in the image. The histogram is typically displayed as a bar graph with each bar representing a different colour or range of colours. By analysing the colour histogram, we can gain insights into the overall colour composition of the image, identify dominant colours, and compare the colour distribution of different images.

Texture: Texture refers to the visual quality of a surface, characterized by the arrangement and variation of shapes, colours, and patterns. In image processing, texture analysis involves quantifying the spatial arrangement of pixel intensities in an image to describe its visual appearance. Textures can be classified into categories such as smooth, rough, bumpy, or fine, and can convey different visual and tactile sensations to the viewer.

Shape: Shape is a fundamental characteristic of an image that relates to the spatial distribution and arrangement of objects within the image. It refers to the outline or contour of objects, as well as the overall geometric structure and form of the composition. Shapes can be simple or complex, regular or irregular, and can convey different meanings and visual elements to the viewer. Shape analysis is important in image processing and computer vision for jobs such as object recognition, segmentation, and pattern matching, as it allows us to extract meaningful information about the structural properties of an image and identify objects based on their distinctive shapes and features.

C. Training

In order to increase the accuracy of image processing models, a testing dataset is first placed in a temporary folder. The predicted results from the test case are then generated and analyzed. Classifiers graphs are plotted based on the test results to visualize the performance of different models. Additionally, various feature sets are considered and added to

the test case file to further refine the models. This process helps to improve the accuracy and reliability of the image processing models by fine-tuning the algorithms and incorporating relevant features. By continuously testing and refining the models with new data and features, the image processing system can better adapt to different scenarios and provide more precise and reliable results. This iterative process of testing, analyzing, and optimizing is important for improving the performance of image processing models.

D. Classification

Convolutional layers apply filters to input data to detect important features like edges, textures, and shapes. Each filter scans the input data using element-wise multiplication and summing to create a feature map. Pooling layers reduce the spatial dimensions of feature maps to simplify the network's computations. Fully connected layers predict outcomes based on features extracted by previous layers, allowing the network to learn difficulty patterns. CNNs are trained via backpropagation, adjusting layer weights to minimize prediction errors. CNNs excel in image recognition tasks like object detection and facial recognition and have applications in natural language processing and speech recognition.

ALGORITHM

A convolutional neural network (CNN) can be likened to a digital brain that is specialized in interpreting and understanding images. It consists of layers of neurons that collaborate to dissect the visual information present in an image, similar to the brain's ability to identify shapes and objects. Through training on numerous examples, the CNN can efficiently recognize patterns, such as distinguishing faces or various animals in images. Ultimately, it acts as an intelligent computer program capable of rapidly analysing and comprehending visual data in a manner resembling human perception.

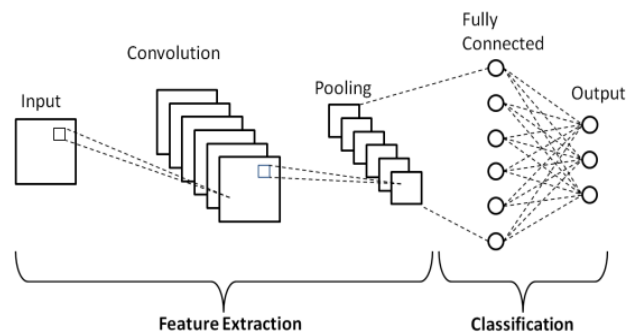


Fig. 4. CNN Algorithm

Convolutional Layer

Kernels are small matrices that slide across an image to detect patterns and features at different locations. Each element in the kernel matrix performs a specific mathematical operation on the corresponding pixel value in the image, such as convolution or pooling. The process of using kernels to extract features from an image is called a convolutional neural network (CNN). CNNs are commonly used in computer vision jobs like image classification, object detection, and image segmentation.

Pooling Layer

The pooling layer is a crucial component in convolutional neural networks that plays a significant role in down sampling the spatial dimensions of feature maps. This down sampling helps in controlling computational costs and preventing overfitting. Additionally, the pooling layer introduces translation invariance to the model, enabling it to recognize features regardless of their position in the image. In addition to down sampling, the pooling layer also contributes to building a hierarchical representation of the input data. By applying the pooling operation to smaller regions of the feature map, it captures local patterns and properties present in the image, allowing the network to learn more complex and abstract features as it progresses through the layers. Moreover, the pooling layer enhances the network's ability to generalize to new, unwanted data by filtering out noise and irrelevant information from the input data. This helps in making the model more robust and better at generalizing to new examples. In summary, the pooling layer simplifies the required data extracted from the input data, improves computational efficiency, prevents overfitting, introduces translation invariance, and builds a hierarchical representation of features. The combination of convolutional

and pooling layers in CNNs enables them to effectively learn and extract meaningful features from complex images, making them a powerful tool for jobs such as image classification, object detection, and image segmentation.

Convolutional Matrix

2	3	1	4
5	6	7	8
9	10	11	12
13	14	15	16

Kernel Size 2 | Stride 2 | Padding 0

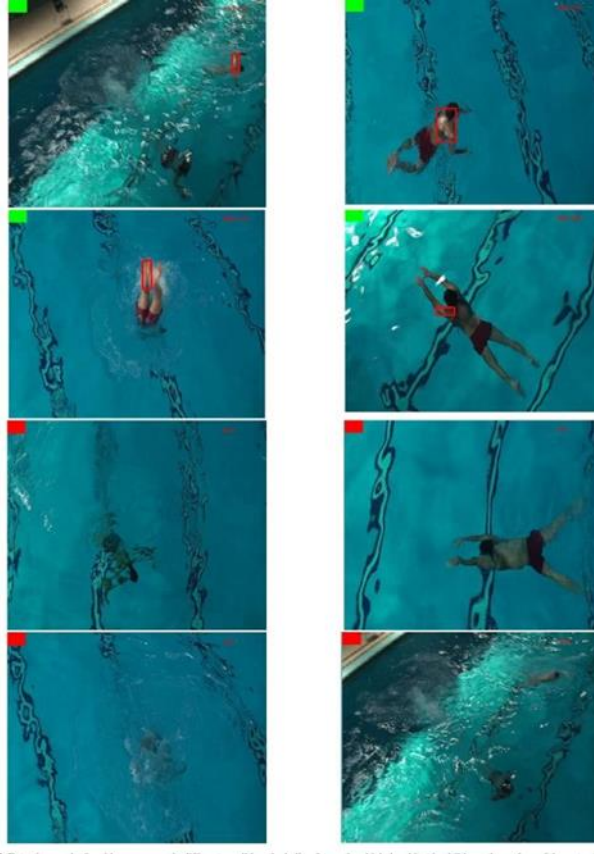
Fig. 5. Structure of CNN Matrices

Activation Layer

Normalization is a acute step in the implementation of Convolutional Neural Networks (CNNs) as it involves adjusting the input values to a specific range, generally between 0 and 1 or -1 and 1. This process is essential for maintaining the integrity of the data, improving the efficiency of the network, and enhancing the overall accuracy of the model. Normalization ensures that the input data is standardized, making it easier for the CNN to learn and extract meaningful patterns from the input images. This standardization also helps the network become more stable during training, reducing the likelihood of issues like vanishing or exploding gradients. Additionally, normalization accelerates the convergence of the network, leading to better generalization to unseen data. Ultimately, normalization is critical for optimizing the performance and effectiveness of CNNs by ensuring that the input data is appropriately scaled for optimal learning and inference.

VI. CONCLUSION

The proposed drowning detection system is a cutting-edge solution that combines IoT technology and advanced deep learning techniques to overcome the limitations of traditional methodologies. Through a network of sensors that gather both physiological and environmental data, the system can accurately identify possible drowning incidents in various aquatic settings. The deep learning model, trained on diverse datasets, enhances the system's ability to recognize patterns and anomalies linked to drowning. A key feature of the system is its real-time communication capability via a WiFi module. This enables immediate alerts and notifications to be sent to designated responders in case of a potential drowning, facilitating prompt intervention. The project focuses on scalability, adaptability, and user-friendly interfaces to ensure that the system can be easily deployed and used in different settings. This makes it a valuable tool for enhancing water safety in both public and private aquatic environments. While initial tests have shown promising results, ongoing research and real-world implementations are needed to further refine and validate the system's effectiveness. Overall, this project represents a significant advancement in utilizing technology to prevent and address drowning incidents, ultimately improving water safety overall.



REFERENCES

- [1]C. J. Taal, F. W. Jansen, E. J. Van Gerven, H. ijkema, J.C. De Winter, "Vision-based Drowning Detection," in the year 2017 Venice, Italy, 2017, pp. 2549-2555.
- [2]M. Maresova, R. Kaleta, J. Zurek, "Development of Vision-based System for Improved Pool Safety and Monitoring," in the year of 2019 ,Montreal,Canada, 2019, pp. 4893-4899.
- [3]S. Kim, S. Lee, S. K. Son, "Deep Learning-based Drowning Detection in Swimming Pools," in Proceedings of the 2020 International Conference on Image processing (ICIP), Abu Dhabi, United Arab Emirates, 2020, pp. 112- 118.
- [4]H. H. Chen, Y. G. Wu, C. H. Chang, "A Vision-based Swimming Pool Monitoring System for Drowning Incident Detection, ," Journal of Visual Communication and Image Representation, vol. 30, pp. 123-135, 2015.
- [5]G. Shroff, A. Maheshwari, R. Khare, "An Intelligent Vision-based System for Drowning Detection in Swimming Pools," vol.174, no. 5, pp. 24-29, 2019.
- [6]Long-term Recurrent Convolutional Network (LRCN). Home.<https://kobiso.github.io/research/research-lrcn/> Mahapatra , S. (2018, June 15).
- [7]A. Kumar, S. Singh, "Application of Vision-based Techniques for Drowning Detection in Swimming Pools," International Journal of Computer Science and Information Technology, vol. 11, no. 3, pp. 50-56, 2021.



INTERNATIONAL
STANDARD
SERIAL
NUMBER
INDIA



INTERNATIONAL JOURNAL OF INNOVATIVE RESEARCH

IN SCIENCE | ENGINEERING | TECHNOLOGY

 9940 572 462  6381 907 438  ijirset@gmail.com



www.ijirset.com

Scan to save the contact details