



e-ISSN: 2319-8753 | p-ISSN: 2347-6710

# IJRSET

International Journal of Innovative Research in  
**SCIENCE | ENGINEERING | TECHNOLOGY**



# INTERNATIONAL JOURNAL OF INNOVATIVE RESEARCH

IN SCIENCE | ENGINEERING | TECHNOLOGY

Volume 13, Issue 12, December 2024

**ISSN** INTERNATIONAL  
STANDARD  
SERIAL  
NUMBER  
INDIA

**Impact Factor: 8.524**

9940 572 462

6381 907 438

[ijirset@gmail.com](mailto:ijirset@gmail.com)

[www.ijirset.com](http://www.ijirset.com)

# **Modelling and Layout of Farm House using AutoCad and 3ds Max Software**

**Kamishetty Shiva<sup>a</sup>, Koduri Vignesh Kumar<sup>a</sup>, Mohammed Toufiq Umar <sup>a</sup>, Syed Amjad Peer Quadri<sup>b</sup>**

U.G. Student, Department of Civil Engineering, Guru Nanak Institutions Technical Campus, Ibrahimpatnam,  
Telangana, India <sup>a</sup>

Assistant Professor, Department of Civil Engineering, Guru Nanak Institutions Technical Campus, Ibrahimpatnam,  
Telangana, India <sup>b</sup>

**ABSTRACT:** This project explores the process of MODELLING AND LAYOUT OF FARM HOUSE using AUTOCAD and 3DS Max software. The aim is to create a comprehensive and visually appealing representation of the building, integrating both 2D and 3D design methodologies. The project encompasses various stages, starting with initial sketches and design requirements, followed by the meticulous use of AUTOCAD for 2D drafting, including site plans, floor plans, elevations, and sections. The integration of 3ds Max enables the transition from 2D drawings to a detailed 3D model, incorporating realistic materials, lighting, and spatial relationships. The project not only focuses on the technical aspects of modeling but also emphasizes the importance of effective communication through presentation and documentation. Clear layouts, floor plans, and 3D views are generated to facilitate better understanding among stakeholders, including clients, architects, and construction teams.

**KEYWORDS:** 2d drawings, 3d visualization, Architectural works, AutoCAD, 3ds Max.

## **I. INTRODUCTION**

The modeling of a farmhouse using 3ds Max is a creative and technical process that combines architectural design and 3D visualization. 3ds Max, a powerful 3D modeling and rendering software, is widely used by architects, designers, and artists to create realistic and detailed representations of buildings and structures. For a farmhouse, the modeling process involves crafting a detailed design that reflects its rustic and functional charm while incorporating modern aesthetics.

This task requires expertise in understanding architectural elements, such as spatial layouts, materials, textures, and lighting. The software enables designers to simulate realistic environments by applying advanced features like photorealistic rendering, dynamic lighting, and intricate detailing. Through this process, a virtual 3D model of a farmhouse can be created to visualize its design, assess functionality, and make refinements before the construction phase. Such a project not only aids in better communication with stakeholders but also serves as an invaluable tool for design exploration and presentation.

## **II. LITERATURE SURVEY**

Korolija et al., 2002, Realistic Rendering Techniques:

By the early 2000s, rendering engines such as Mental Ray and V-Ray integrated into 3D's Max allowed for photorealistic visualization, making farmhouse designs more appealing and lifelike.

Kumar and Singh (2018), AutoCAD provides a robust platform for creating detailed plans, sections, and elevations, which are essential for the spatial arrangement of farmhouse layouts. The software's layer-based drafting system allows for organizing different elements of the design effectively, ensuring clarity in complex projects.

Jain and Verma (2019) highlighted that AutoCAD's accuracy in drafting and its compatibility with other software make it indispensable for designing structures like farmhouses, where precision in space utilization and functionality is crucial.

Patel and Mehta (2020) emphasized that 3ds Max is particularly effective in rendering natural elements such as landscapes, lighting, and textures, which are important in farmhouse projects.

Sharma and Gupta (2021) noted that the realistic visualizations created with 3ds Max enable architects and clients to assess the aesthetic and functional aspects of the design before construction begins. This is particularly beneficial for farmhouses, where the interplay between the built environment and natural surroundings is a key design consideration. Ahmed et al. (2019) discussed how importing AutoCAD drawings into 3ds Max allows architects to transition seamlessly from precise drafting to realistic 3D modeling. This interoperability reduces the risk of errors and enhances the accuracy of visual representations.

Divyaraj Singh M. SOLANKI et. al 2023[1] The study highlights the transformative role of Virtual Reality (VR) and Augmented Reality (AR) in civil engineering, improving construction processes, education, and project management. These technologies enable efficient design and planning, early error detection, and collaboration, reducing costs by 43-45% for project mock-ups. VR enhances education with immersive environments and virtual site visits, while 2D plans can be converted into 3D interactive models for sustainable marketing and sales. VR and AR are poised to revolutionize civil engineering, delivering significant economic, educational, and operational benefits.

Ahmed et al. (2019) discussed how importing AutoCAD drawings into 3ds Max allows architects to transition seamlessly from precise drafting to realistic 3D modeling. This interoperability reduces the risk of errors and enhances the accuracy of visual representations.

Chakraborty et al. (2021) suggested that AutoCAD is effective in planning spaces such as courtyards, verandas, and utility areas, while 3ds Max adds value by simulating the natural environment surrounding the farmhouse.

Michelangelo Scorpio et. al 2020[13] This study examines how immersive virtual reality (IVR) can improve smart city lighting design by addressing both technical and user-centered factors. Traditional tools focus on photometric parameters but overlook subjective user responses like comfort and emotional impact. IVR allows designers to create realistic, interactive virtual environments for evaluating lighting systems in key urban areas such as roads, green spaces, and buildings. Using the Unreal game engine, the study highlights VR's ability to incorporate both objective and subjective lighting criteria, demonstrating its potential to enhance user-focused lighting designs. While VR shows promise, further research is needed to ensure its reliability in accurately simulating lighting effects. The paper emphasizes IVR's role in creating innovative and collaborative lighting solutions for smart cities

Kapoor and Sinha (2019) emphasized the importance of combining traditional architectural principles with modern tools to create designs that respect the rural context while incorporating contemporary elements.

Delgado et. al 2020[12] This paper presents a study on the current use of augmented reality (AR) and virtual reality (VR) in the architecture, engineering, and construction (AEC) sectors and proposes a future research agenda. The study involved workshops and surveys with 54 experts from 36 organizations. Based on the data, six key use-cases for AR and VR in AEC were identified: stakeholder engagement, design support, design review, construction support, operations management, and training. The paper suggests three main research areas: engineering-grade devices for harsh construction environments, efficient workflow and data management, and the development of new capabilities to meet specific industry needs. The study aims to provide a foundation for practitioners to make informed adoption decisions and a roadmap for researchers to guide future efforts in AR and VR applications in AEC.

Verma and Choudhary (2022) argued that incorporating BIM can improve collaboration and sustainability analysis in projects. For farmhouse design, this could lead to more energy-efficient and environmentally friendly solutions.

### III. METHODOLOGY

The process of modelling and creating the layout of a farmhouse using AutoCAD and 3ds Max involves several key stages, each contributing to a comprehensive design that integrates technical precision with aesthetic visualization.

The first step involves conceptualizing the farmhouse layout. This includes gathering client preferences, site information, and functional requirements. Preliminary sketches or conceptual diagrams are created, taking into account

the farmhouse's purpose, location, and environmental factors. AutoCAD is used to create accurate 2D floor plans and architectural layouts. These drawings include essential elements such as walls, doors, windows, and structural details. The software allows the designer to define precise dimensions and placements, ensuring that the layout adheres to building standards. A detailed site plan is also developed to show the arrangement of the farmhouse on its plot, along with any landscaping features. AutoCAD also plays a significant role in designing the landscape around the farmhouse. This includes adding features like gardens, pathways, driveways, and any water bodies. The placement of these elements ensures that the design is not only functional but also harmonizes with the surrounding environment.

Once the 2D layout is finalized, the design is transferred into 3ds Max for 3D modelling. In this stage, the architectural components such as walls, roofs, windows, and doors are constructed in three dimensions. The model is refined using 3ds Max's advanced tools to add realistic proportions, structural details, and architectural features. After the basic structure is created, the next step is to apply textures and materials to simulate realistic finishes. 3ds Max allows the designer to choose from a wide range of materials like brick, wood, glass, and stone. Proper lighting techniques are also used to ensure that natural light is accounted for, enhancing the overall look of the model. With the 3D model in place, the rendering process begins. This involves generating high-quality images or animations that depict the farmhouse in its final form. Camera angles are adjusted, lighting effects are optimized, and rendering settings are configured to produce photorealistic results, offering a clear view of the design from multiple perspectives. After rendering, post-processing techniques are applied to refine the images. Software like Photoshop can be used to enhance the visual appeal, adjusting colour balance, contrast, and brightness to achieve the desired outcome. These final images offer a polished representation of the farmhouse design. The final step is presenting the design to the client. Based on their feedback, further modifications may be made to the layout or 3D model. This iterative process ensures that the final design meets the client's expectations in both functionality and aesthetics.

#### IV. EXPERIMENTAL RESULTS

Figures shows the result of the layout of the farm house using AutoCAD and 3ds max software.

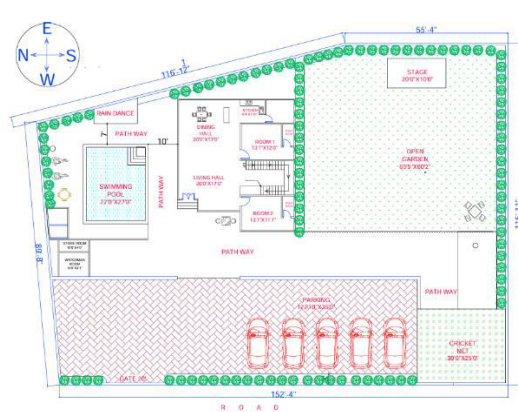


Figure:1

The given plan illustrates a detailed layout of a farmhouse, highlighting various functional and recreational spaces. At the entrance, there is a gate (20' wide) leading to a spacious parking area capable of accommodating multiple vehicles. Adjacent to the parking area is a cricket net (30'x25'), designed for sports and leisure activities.

The central structure includes essential living spaces such as a living hall (20'x17'0"), a dining hall (20'x17'0"), and a kitchen (8'x7'6"). There are two bedrooms, Room 1 (13'7"x12'0") and Room 2 (13'7"x11'7"), offering private accommodations. Additional support rooms include a store room (10'x10') and a watchman room (13'7"x9'1") for convenience and security.

To the left of the main structure, a swimming pool (22'0"x27'0") is featured alongside a dedicated rain dance area, providing recreational options. Surrounding the pool is a landscaped pathway and lush greenery, enhancing the

aesthetic appeal. To the right of the layout, an expansive open garden (65'5"x60'2") with a stage (20'x10'0") is included, ideal for hosting events or gatherings. The design ensures connectivity between all zones through pathways while maintaining a balance of utility and leisure. The layout is surrounded by a perimeter of trees for privacy and environmental integration.

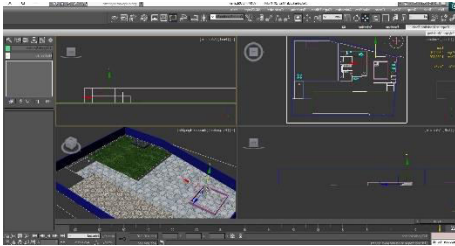


Figure:2a

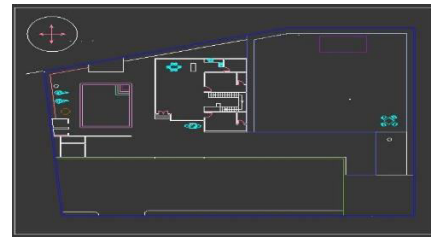


Figure:2b

Figure 2a&2b. Shows the interface of 3ds max design of our project.

The first image showcases the 3ds Max interface, illustrating a project focused on the design of a farmhouse. This interface is divided into four primary viewports: Top, Front, Left, and Perspective, enabling users to view and edit the model from different angles simultaneously. In the Top View, the blueprint of the farmhouse layout is clearly visible, showing spaces allocated for different rooms, outdoor areas, and pathways. The Perspective View displays a rendered portion of the design, including textured elements such as a grass lawn and tiled pathways, providing a more realistic preview of the final output. The navigation tools and graphical modelling utilities at the top highlight the user's active engagement in the modelling process.

The second image provides a detailed floor plan of the farmhouse, drawn in 2D within the Top View. The layout includes distinct sections for living spaces, open areas, and possibly a garden or recreational zone. It is meticulously drafted with clear boundaries and markings, incorporating features like stairs, walls, and additional architectural elements. The north indicator in the corner ensures alignment for orientation purposes, which is crucial for understanding the spatial arrangement in real-world settings. This view is essential for refining dimensions and ensuring an accurate representation of the design.



Figure:3

Figure 3 shows that the image showcases a spacious and elegantly designed bedroom featuring a neutral colour palette dominated by soft whites, greys, and beige tones. A large four-poster bed serves as the centrepiece, adorned with plush pillows and a light, cozy blanket. Positioned on a luxurious area rug that complements the wooden flooring, the bed is flanked by modern bedside tables with matching lamps that add symmetry to the space. Natural light streams in through the tall, well-draped windows, highlighting the clean lines and airy feel of the room.

The ceiling features a coffered design, adding architectural interest, and includes recessed lighting as well as a delicate chandelier that provides a touch of sophistication. A cozy armchair and a stylish bench at the foot of the bed add additional comfort and functionality. The far corner reveals a minimalist dresser placed against a wall with decorative

mouldings, enhancing the refined aesthetic. The combination of natural light, contemporary furniture, and thoughtful detailing creates a serene and luxurious bedroom atmosphere ideal for relaxation.



Figure:4a



Figure:4b



Figure:4c

Figure 4a,4b& 4c. Final rendering model of farm house design.

Figure 4a,4b&4c shows that the images depict a 3D architectural visualization of a modern, single-story residential property surrounded by a well-landscaped outdoor area. The house has a sloped roof with beige tiles and smooth exterior walls painted in a soft cream colour. It includes large rectangular windows for ample natural light and a small covered patio at the entrance.

In the first image, there is a well-designed swimming pool surrounded by tiled flooring, with steps leading into the water. The pool area is enclosed with green hedges, adding a sense of privacy and aesthetic appeal. Adjacent to the pool, a pergola structure offers shaded seating.

The second image highlights a large lawn area located at the rear side of the property. The lawn is bordered by rows of ornamental plants and palm-like shrubs along a white boundary wall, creating a lush green environment. A small stone platform can be seen in the corner of the lawn, possibly for outdoor activities or seating. The paved driveway and walkways are lined with green hedges, creating a neat and organized landscape. Overall, the property combines modern architectural elements with a spacious, functional outdoor area designed for relaxation and recreation.

## V. CONCLUSIONS

The farmhouse presents a harmonious blend of modern functionality and natural aesthetics, making it an ideal space for relaxation and recreation. The design emphasizes open areas like the pool and surrounding pathways, providing ample space for outdoor activities. The well-structured house complements the landscaping with its clean lines, earthy tones, and minimalist appeal. The thoughtful integration of greenery and tiled walkways enhances the visual charm while ensuring a serene environment. Overall, this farmhouse design successfully creates a peaceful and practical retreat, balancing comfort with elegance for an enriching lifestyle experience.

**REFERENCES**

1. Jay Chen, Y., Li, Z., & Wang, X. (2019). Sustainable design of rural houses using computer-aided design. *Sustainability*, 11(10), 2811.
2. Kumar, S., Kumar, R., & Sharma, A. (2018). Design and analysis of a farm house using AutoCAD and STAAD Pro. *International Journal of Advanced Research in Computer Science*, 9(3), 355-362.
3. Park, CS, Le, QT, Pedro, A and Lim, CR 2016. Interactive building anatomy modelling for experiential building construction education. *Journal of Professional Issues in Engineering Education and Practice*, 142(3), 04015019, [https://doi.org/10.1061/\(ASCE\)EI.1943-5541.0000268](https://doi.org/10.1061/(ASCE)EI.1943-5541.0000268)
4. Fogarty, J, McCormick, J and El-Tawil, S 2018. Improving student understanding of complex spatial arrangements with virtual reality. *Journal of Professional Issues in Engineering Education and Practice*, 144(2), 04017013.
5. Wang, P, Wu, P, Wang, J, Chi, HL and Wang, X 2018. A critical review of the use of virtual reality in construction engineering education and training. *International journal of environmental research and public health*, 15(6), 1204, <https://doi.org/10.3390/ijerph15061204>
6. International Energy Agency. (2020). *Energy Efficiency in Buildings*.
7. Patel, J., Patel, S., & Patel, H. (2020). Design and modelling of a sustainable farm house using Autodesk Revit. *International Journal of Sustainable Built Environment*, 9(1), 1-11.
8. Singh, J., Singh, R., & Kaur, A. (2020). Design and analysis of a farm house using 3ds Max and STAAD Pro. *International Journal of Advanced Research in Computer Science*, 11(2), 147-155
9. Akeem Pedro, Rahat Hussian, Anh-Tuan Pham hang, Hai Chien Pham 2019, *Visualization Technologies in Construction Education: A Comprehensive Review of Recent Advances*, River Publishers, 35, 9781003338130.
10. Thai-Thanh-Mai Pham, Quang-Vu Pham, Anh-Tuan Pham-Hang, Hai Chien Pham 2019, *A Legal Framework and Compliance with Construction Safety Laws and Regulations in Vietnam*, River Publishers, 39, ISBN9781003338130.
11. K Varney, M. Kusnir 2019, *Impact of flow rate on the water film thickness of water wall*, CRC Press, 6, 9780429021596.
12. Bouska, R and Horakova, RS 2019. Implementation of virtual reality in BIM education. In *Advances and Trends*
13. Kassim, M, Zaid, AAM, Idris, A, Shahabuddin, S, Mohamad, R and Yahaya, CK 2019. 3D modelling of multimode and single mode fibre. *Indonesian Journal of Electrical Engineering and Computer Science*, 16(3), 1398-1406, DOI: 10.11591/ijeecs.v16.i3.



INTERNATIONAL  
STANDARD  
SERIAL  
NUMBER  
INDIA



# INTERNATIONAL JOURNAL OF INNOVATIVE RESEARCH

IN SCIENCE | ENGINEERING | TECHNOLOGY

 9940 572 462  6381 907 438  [ijirset@gmail.com](mailto:ijirset@gmail.com)



[www.ijirset.com](http://www.ijirset.com)

Scan to save the contact details