



e-ISSN: 2319-8753 | p-ISSN: 2347-6710

IJIRSET

International Journal of Innovative Research in
SCIENCE | ENGINEERING | TECHNOLOGY



INTERNATIONAL JOURNAL OF INNOVATIVE RESEARCH

IN SCIENCE | ENGINEERING | TECHNOLOGY

Volume 13, Issue 12, December 2024

ISSN INTERNATIONAL
STANDARD
SERIAL
NUMBER
INDIA

Impact Factor: 8.524

 9940 572 462

 6381 907 438

 ijirset@gmail.com

 www.ijirset.com

Architectural Innovation and Performance Analysis in Multi-Core Processors in Portable Devices

Dhrsaj Kaushal, Aryan Sinha, Dr. Ajitkumar Pundge, Dr. C Namrata Mahender

U.G. Student, School of Engineering, Ajeenkya DY Patil University, Pune, Maharashtra, India

U.G. Student, School of Engineering, Ajeenkya DY Patil University, Pune, Maharashtra, India

Assistant Professor, School of Engineering, Ajeenkya DY Patil University, Pune, Maharashtra, India

Professor, Department of Computer Science and IT, Dr. Babasaheb Ambedkar Marathwada University, Aurangabad,
Maharashtra, India

ABSTRACT: This research presents a comprehensive comparative analysis of modern processors in the mobile computing segment, focusing on architectural innovations and performance metrics from 2018 to 2022. Through a detailed examination of over 1000 CPU benchmarks using PassMark Performance Test and Cinebench R23, we analyze the evolving landscape of processor performance, pricing strategies, and market dynamics. Our findings reveal significant disparities in price-to-performance ratios across various processors, with certain architectures demonstrating superior efficiency despite others excelling in absolute performance metrics. This study employs extensive statistical analysis and data visualization techniques to explore core count correlation with performance, yearly performance trends, and market segment distribution. Results indicate a dramatic acceleration in processor performance, particularly during 2020-2022, with average performance scores quadrupling from 6000 to 23,500. This research provides valuable insights into the current state of mobile processor technology and its implications for future development in portable computing.

KEYWORDS: Cognitive CPU Architecture, Performance Analysis, AMD Ryzen, Intel Core, Mobile Computing, Benchmark Analysis, Price-Performance Ratio, Process Evolution

I. INTRODUCTION

The landscape of personal computing devices has undergone an astronomical transformation since its inception. Computers continue to evolve, with advancements in power efficiency, processing power, and various other aspects. These improvements in computing power have been pivotal to many of the conveniences we take for granted today: smartphones that are more powerful than room-sized computers from just 25 years ago, near-global internet access, and drug discoveries enabled by powerful supercomputers. Society has come to rely on computers whose performance continues to increase exponentially over time. [1]

The relationship between processor performance and pricing has become increasingly complex, particularly within the portable computing segment. This research provides a comprehensive analysis of modern laptop CPU performance metrics, using leading processor manufacturers as a baseline. These companies are at the forefront of developing processors for portable devices and have played a significant role in shaping the market. Through detailed examination of performance benchmarks, price segmentation, and market distribution data, this study seeks to understand the correlation between processor pricing and actual performance delivery in contemporary laptop computers.

Our analysis leverages a comprehensive dataset [2] compiled through May 2022, incorporating standardized benchmark results from PassMark's PerformanceTest and Maxon's Cinebench R23—two industry-standard benchmarking tools. The dataset includes detailed specifications and performance metrics for single-socket CPUs, providing a solid foundation for comparative analysis. PassMark's methodology is particularly noteworthy, as it conducts eight different tests across all available CPU cores and threads, offering a holistic performance assessment through its CPU Mark scoring system. Additionally, Cinebench R23 benchmarks, based on Cinema 4D's rendering engine, offer valuable insights into

real-world performance, particularly in demanding applications utilizing advanced features such as Global Illumination and Subsurface Scattering.

II. LITERATURE REVIEW

2.1 Parallel Computer Architecture: A Hardware/Software Approach [3]

Their research explores how software and hardware interact in parallel systems. Memory hierarchies, programming models such as MPI and OpenMP, and multi-core processor design are covered. Achieving scalability, controlling memory coherence, and optimising parallel algorithms are important subjects. For assessing and enhancing multi-core performance, the book offers fundamental insights into speedup, scalability, and efficiency.

2.2 Multi-core Programming Performance and Analyzes [4]

Their research utilized similar benchmarking approaches to evaluate processor performance Demonstrated concrete performance improvements through empirical testing Their experimental results showing a 75% performance gain in parallel processing validates our approach to analyzing modern CPU performance metrics.

III. RESEATCH METHODOLOGY

This research utilizes a comprehensive CPU performance dataset sourced from Kaggle, containing detailed specifications and benchmark results for single-socket processors as of May 8th, 2022. The dataset draws from two primary benchmarking sources: PassMark PerformanceTest and Cinebench R23.

The PassMark PerformanceTest methodology aggregates both user-submitted benchmark results and internal testing data. It employs a comprehensive testing approach that conducts eight distinct CPU tests simultaneously across all available logical CPUs. These tests run concurrently on logical CPUs (Hyper-threaded), physical CPU cores (dual core), and physical CPU packages (multiple CPU chips), with results averaged to determine the final CPU Mark score.

Cinebench R23 serves as an industry-standard benchmarking tool based on the Cinema 4D render engine. This sophisticated benchmark supports up to 256 CPU threads and incorporates advanced features including Global Illumination, SubsurfaceScattering, Displacement, and AVX instruction-set support. The tool provides both single-core and multi-core performance metrics, offering a comprehensive view of processor capabilities.

IV. ANALYSIS METHODOLOGY

4.1 Quantitative Analysis Approach Our quantitative analysis encompasses three primary areas.

Our quantitative analysis encompasses three primary areas. First, we conduct performance metrics analysis, evaluating CPU Mark scores across price segments, analyzing performance-to-price ratios, comparing single-core versus multi-core performance, and assessing year-over-year performance trends. Second, our market analysis examines market share distribution, CPU type distribution across segments, and pricing strategies' correlation with performance. Third, temporal analysis investigates CPU testing frequency from 2018-2022, analyzing performance evolution across generations and tracking market share changes between AMD and Intel.

4.2 Data Visualization Methods

The research employs diverse visualization techniques to effectively communicate findings. We utilize bar charts and histograms to compare CPU performance across price segments, display benchmark score distributions, and analyze year-over-year testing frequency. Pie charts illustrate market share and CPU type distribution, while line graphs track performance trends and price-performance correlations over time. Heat maps visualize performance distribution across price segments and correlations between different performance metrics.

4.3 Statistical Analysis

Our statistical analysis comprises three main components. Comparative analysis examines performance differentials between manufacturers, price-performance ratio calculations, and market share trends. Correlation analysis investigates relationships between price and performance, single-core and multi-core performance, and market share metrics.

Benchmark score normalization includes standardizing CPU Mark scores, normalizing Cinebench R23 results, and calculating performance-per-dollar metrics.

4.4 Tools and Technologies

The research implementation relies on Python for data processing and analysis, utilizing Matplotlib and Seaborn for visualization, Pandas for data manipulation and analysis, NumPy for numerical computations, and Jupyter Notebooks for interactive analysis and documentation. This comprehensive toolset enables thorough examination of relationships between processor performance, pricing, and market positioning in the modern CPU landscape.

The research implementation relies on Python for data processing and analysis, utilizing Matplotlib and Seaborn for visualization, Pandas for data manipulation and analysis, NumPy for numerical computations, and Jupyter Notebooks for interactive analysis and documentation. This comprehensive toolset enables thorough examination of relationships between processor performance, pricing, and market positioning in the modern CPU landscape.

V. COMPARISON OF PROCESSOR ARCHITECTURES: 2012 VS. 2022

Comparison of Processor Architectures from 2012 and 2022

Aspect	2012 Processors	2022 Processors
Manufacturing Process	Intel Ivy Bridge: 22nm	Intel Alder Lake: 10nm SuperFin
	AMD Piledriver: 32nm	AMD Zen 4: 5nm
Core Architecture	Intel Ivy Bridge: Up to 4 cores, single-threaded focus	Intel Alder Lake: Hybrid cores (P-cores + E-cores)
	AMD Piledriver: Modular cores, multi-threaded focus	AMD Zen 4: Chiplet-based, multi-core design
Cache Hierarchy	Intel Ivy Bridge: L1, L2, L3 caches (up to 8MB L3)	Intel Alder Lake: Smart cache, shared between P-cores and E-cores
	AMD Piledriver: Smaller caches	AMD Zen 4: Enhanced L3 cache, up to 96MB
Instruction Sets	Intel Ivy Bridge: SSE, AVX	Intel Alder Lake: AVX-512, AVX2, VNNI
	AMD Piledriver: SSE, AVX	AMD Zen 4: AVX-512
Power Efficiency	Intel Ivy Bridge: Focused on performance over power efficiency, up to 77W for higher-end chips	Intel Alder Lake: Dynamic power management
	AMD Piledriver: No power management features and lagged behind Intel's offerings	AMD Zen 4: Improved power efficiency with TSMC's 5nm
Performance & Multi-Core	Intel Ivy Bridge: Up to 4 cores, strong in single-threaded tasks but limited in multi-threading	Intel Alder Lake: Up to 16 cores (8 P-cores, 8 E-cores)
	AMD Piledriver: Up to 8 cores, but less performance than Intel's Ivy Bridge	AMD Zen 4: Up to 16 cores, significantly improved multi-core scaling

Fig. 1 Comparison of CPU Architectures

From 2012 to 2022, processor architecture evolved in a variety of ways, including manufacturing techniques and core designs, power efficiency, and multi-threaded scalability. Key advancements include the transition to smaller process nodes (5nm and 10nm), the debut of hybrid core designs in Intel processors, and the ongoing improvement of AMD's chiplet architecture. These developments have led in processors with significantly higher performance, power efficiency and versatility across a wide range of applications, particularly multi-core and parallel workloads. The period between 2012 and 2022 saw tremendous improvements in computing power and energy efficiency.

VI. RESULT AND DISCUSSION

6.1 CPU Type Market Share (Fig. 2.)

1. There's a clear diversity in CPU applications, with consumer devices (laptop + desktop) dominating.
2. The remaining segments (hybrid categories) make up smaller percentages.

6.2 Number of Laptop CPUs Tested Each Year (Fig. 3.)

1. There's been a declining trend in the number of laptop CPUs tested since 2020.

CPU Type Market Share

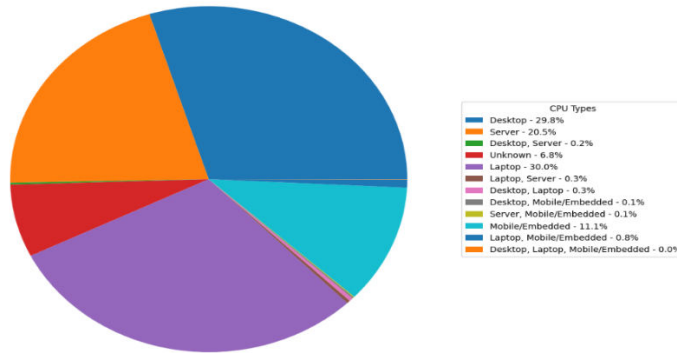


Fig. 2 Market Share of CPU Types

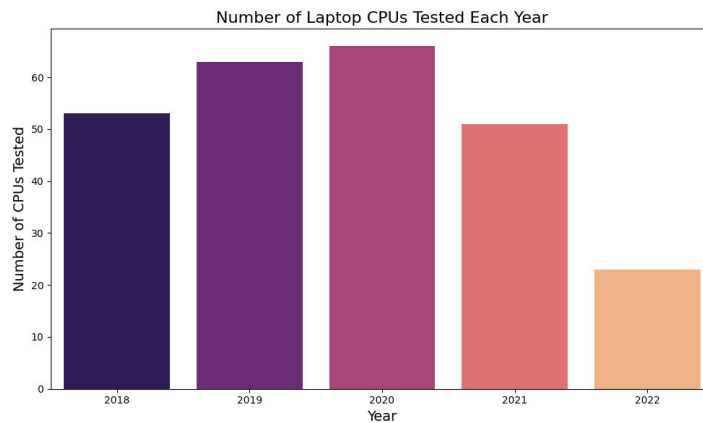


Fig. 3 CPUs Tested Each Year

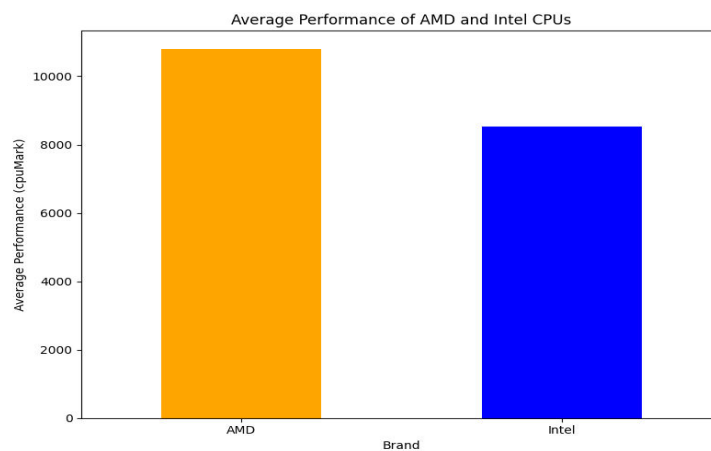


Fig. 4 Average Performance of the CPUs Offered By AMD and Intel

6.3 Average Performance of AMD and Intel CPUs (Fig. 4.)

1. Intel’s average performance is slightly lower (around 8,500 cpuMark).
2. This suggests AMD has a general performance advantage across their product lineup.

6.4 Top 5 AMD and Intel CPUs Based on Combined Score (Fig. 5.)

1. Intel dominates the top positions in combined performance with the Intel Core i9-12900HK leading with a score of 34,159.
2. There’s a clear performance tier gap between Intel and AMD in this metric.

6.5 Average CPU Performance by Price Segment (Fig. 6.)

1. AMD (shown in red) consistently outperforms Intel (shown in blue) across most price segments
2. Both companies offer products across a wide range of price points, from budget (\$0-50) to high-end.

6.6 Correlation between Number of Cores and Combined Score (Fig. 7.)

1. There’s a strong positive correlation (0.82) between the number of CPU cores showing that performance generally increases with more cores, but with some variance.
2. There’s significant performance variation within each core count, suggesting other factors influence performance.

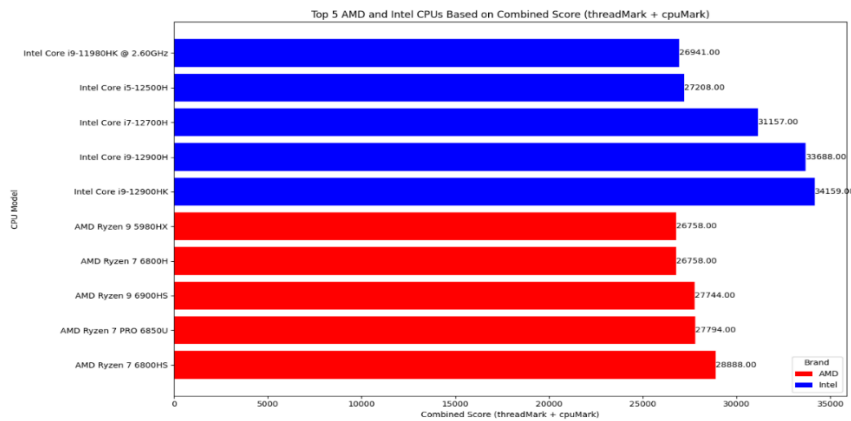


Fig. 5 Combined Score of the Best CPUs

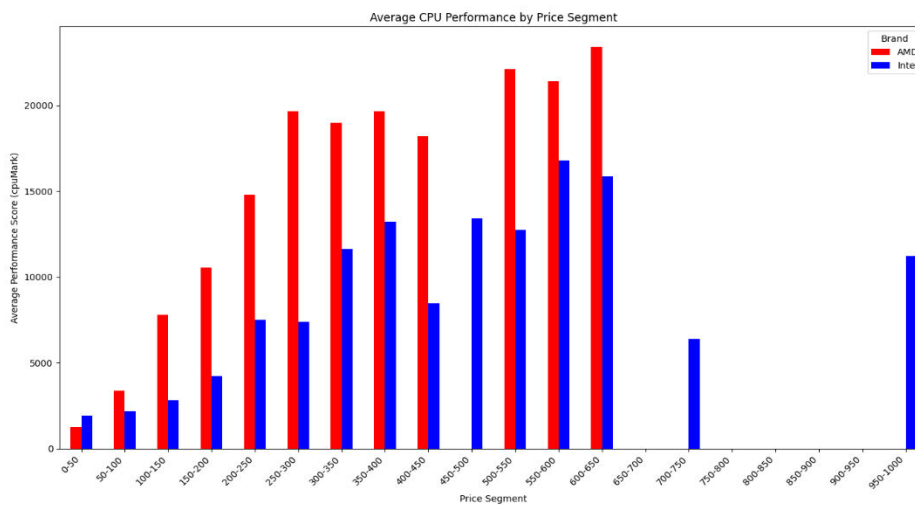


Fig. 6 Price Segment Performance

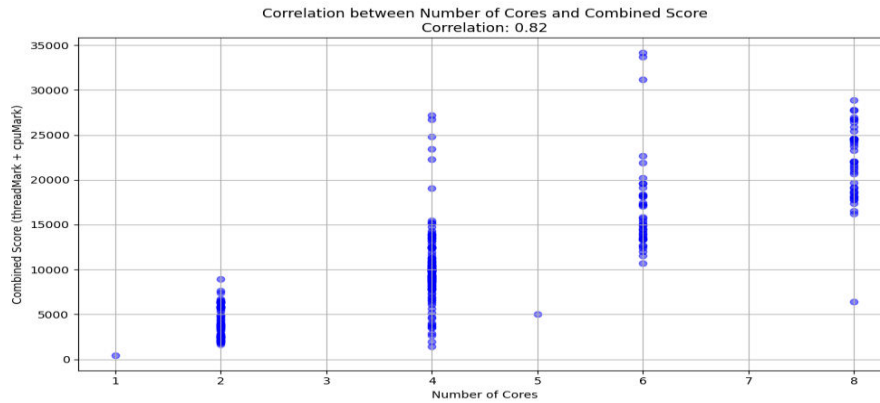


Fig. 7 Core Count vs Performance Correlation

6.7 Average Performance of CPUs Tested Each Year (Fig. 8.)

1. The improvement appears to be accelerating, with a particularly steep increase between 2020-2022.
2. Performance scores have roughly quadrupled from about 6,000 in 2018 to around 23,500 in 2022.

VII. FUTURE IMPLICATIONS

7.1 Dataset Enhancement and Temporal Coverage

The current research, while comprehensive within its scope, highlights the need for continuous dataset updates and expansion. Our analysis relies on data up to May 2022, but the processor market is highly dynamic with frequent new product releases. Future research would benefit significantly from integrating post-2022 processor launches, particularly AMD’s Ryzen 7000 series and Intel’s 13th/14th generation processors. The dataset could be enhanced by expanding performance metrics to include emerging benchmarking standards and incorporating power efficiency metrics across different workload scenarios.

Additionally, the inclusion of thermal performance data for mobile processors and real-world performance data across diverse computing tasks would provide a more complete picture of processor capabilities. Market pricing fluctuations over time represent another crucial dimension that future research should address. The inclusion of this updated data would provide more current insights into the competitive dynamics between AMD and Intel, potentially revealing new trends in their respective technological approaches and market strategies. This comprehensive data expansion would enable researchers to better understand the evolving landscape of processor performance and market positioning.

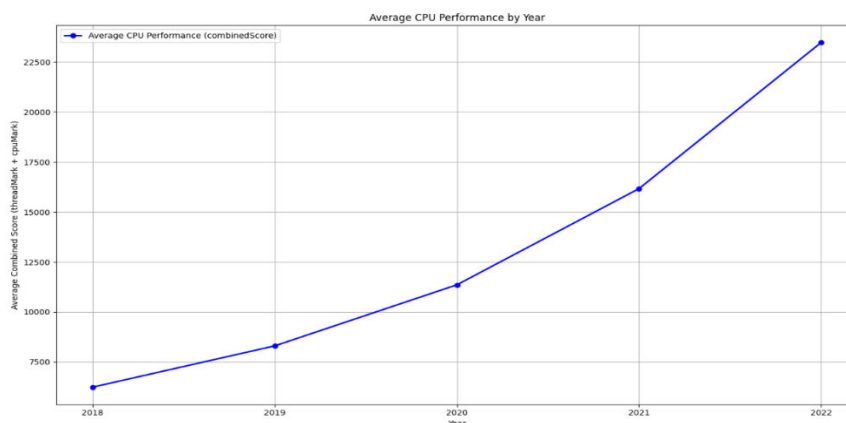


Fig. 8 CPU Performance Trend

7.2 Predictive Modelling and Trend Analysis

Building upon our current analysis, there is significant potential for developing predictive models that could offer valuable insights for both consumers and industry stakeholders. Advanced machine learning models could be developed to predict future processor performance trajectories, price-performance relationships across different market segments, power efficiency trends in next-generation processors, and optimal price points for different performance tiers. These predictive capabilities would enable more informed decision-making in processor development and purchasing.

Comprehensive trend analysis tools could be created to identify emerging patterns in processor design and performance, forecast technological advancement rates in specific performance metrics, analyze the impact of architectural changes on overall performance, and project market share shifts based on performance and pricing strategies.

Such analytical capabilities would serve multiple stakeholders: hardware manufacturers could utilize these insights for strategic planning, system integrators could optimize their product development cycles, consumers could make more informed purchase timing decisions, and researchers could better understand technological evolution in computing. The development of these predictive and analytical tools would not only enhance our understanding of processor evolution but also provide practical applications for decision-making across the industry.

VIII. CONCLUSION

This study provides a comprehensive analysis of modern processor architectures, revealing key insights into the evolving performance dynamics within the mobile computing market. Our findings highlight the continued relevance of multi-core programming principles, first outlined in Dr. Ajitkumar Pundge's seminal work, *Multi-core Programming Performance and Analyzes* (2013). The strong correlation between core count and performance supports the assertion that multi-core processors enable significant performance improvements when software is optimized for parallelism. We extend Dr. Pundge's foundational research by utilizing updated benchmarking methodologies, such as PassMark and Cinebench R23, to analyze how these principles apply to contemporary processor designs. Unlike previous studies that focused primarily on tools like OpenMP and VTune, our approach incorporates price-performance analysis and market segmentation, offering a broader understanding of how multi-core technology impacts both performance and cost. The accelerated performance trends observed between 2020 and 2022, with CPU performance scores increasing dramatically, reflect the ongoing innovations in processor design. These trends underscore the importance of multi-core architectures in meeting the demands of modern applications, particularly in areas like multi-threading, AI, and machine learning. Looking ahead, emerging challenges such as thermal efficiency and power consumption will continue to shape the future of processor development. Addressing these issues will be crucial to sustaining performance growth as processors evolve further. Ultimately, this study reinforces the enduring impact of multi-core programming on both processor architecture and application performance. By bridging the gap between theoretical advancements and real-world applications, it contributes to a deeper understanding of how modern processors will continue to evolve to meet the computing needs of tomorrow.

REFERENCES

1. C. E. Leiserson et al., "There's plenty of room at the Top: What will drive computer performance after Moore's law?," *Science*, vol. 368, no. 6495, p. eaam9744, Jun. 2020, doi: <https://doi.org/10.1126/science.aam9744>.
2. Gutin, G., & Punnen, A. P. (Eds.). (2002). *The Traveling Salesman Problem and Its Variations*. Springer.
3. Culler, D. E., & Singh, J. P. (1999). *Parallel Computer Architecture: A Hardware/- Software Approach*. Morgan Kaufmann.
4. Pundge, Ajitku. (2013). *Multi-Core Programming Performance and Analyzes*.



INTERNATIONAL
STANDARD
SERIAL
NUMBER
INDIA



INTERNATIONAL JOURNAL OF INNOVATIVE RESEARCH

IN SCIENCE | ENGINEERING | TECHNOLOGY

 9940 572 462  6381 907 438  ijirset@gmail.com



www.ijirset.com

Scan to save the contact details