



e-ISSN: 2319-8753 | p-ISSN: 2347-6710

# IJIRSET

International Journal of Innovative Research in  
**SCIENCE | ENGINEERING | TECHNOLOGY**



# INTERNATIONAL JOURNAL OF INNOVATIVE RESEARCH

IN SCIENCE | ENGINEERING | TECHNOLOGY

Volume 13, Issue 12, December 2024

**ISSN** INTERNATIONAL  
STANDARD  
SERIAL  
NUMBER  
INDIA

**Impact Factor: 8.524**

 9940 572 462

 6381 907 438

 [ijirset@gmail.com](mailto:ijirset@gmail.com)

 [www.ijirset.com](http://www.ijirset.com)

# **Modelling and Layout of Farmhouse Using AutoCAD and 3D's Max Software**

**Vallurey Ganesh<sup>a</sup>, Neela Sai Krishna<sup>b</sup>, P Ajay Krishna<sup>c</sup>, DVSP Rajesh<sup>d</sup>**

U.G. Students, Department of Civil Engineering, Guru Nanak Institutions Technical Campus, Ibrahimpatnam,  
Telangana, India<sup>abc</sup>

Assistant Professor, Department of Civil Engineering, Guru Nanak Institutions Technical Campus, Ibrahimpatnam,  
Telangana, India<sup>d</sup>

**ABSTRACT:** This project explores the modelling and layout of a farmhouse using 3ds Max, a powerful tool for architectural visualization. The design process begins with conceptual planning, where key elements such as spatial organization, functionality, and aesthetics are considered. Utilizing 3ds Max, we create detailed 3D models that accurately reflect the farmhouse's architectural features, including structural components, interior layouts, and exterior landscaping.

The workflow encompasses several stages: importing 2D designs, building the 3D structure, and applying realistic textures and materials. Special attention is given to lighting techniques to enhance the model's realism and convey the desired ambiance. The final renderings not only serve as a visual representation for client presentations but also facilitate better understanding of the spatial relationships and overall design intent.

**KEYWORDS:** 3d's Max, 3D visualization, architectural details

## **I. INTRODUCTION**

Autodesk 3dsMax, 3D Max, Is A Professional 3D Computer Graphics Program For Making 3D Models, And Images. It Is Developed And Produced By Autodesk Media And Entertainment.[2] It Has Modelling Capabilities And A Flexible Plug in Architecture And Must Be Used On The Microsoft Windows Platform. It Is Frequently Used By Studios, And Architectural Visualization Studios. It Is Also Used For Movie Effects And Movie Pre-Visualization. 3ds Max Features Shades (Such As Ambient Occlusion And Subsurface Scattering), Dynamic Simulation, Particle Systems, Radiosity, Normal Map Creation And Rendering, Global Illumination, A Customizable User Interface, And Its Own Scripting Language.

### **3ds Max Interface Overview**

The 3ds Max Interface Comprises Controls, Status Information, And Viewports, Where You Work And View Your Scene.

One Of The Most Important Aspect Of Using 3ds Max Is Its Versatility. Many Program Functions Are Available From Multiple Interface Elements. For Example, You Can Open Track View For Animation Control From The Main Toolbar As Well As The Graph Editors Menu, But The Easiest Way To Get To A Specific Object's Track In Track View Is To Right-Click The Object And Then Choose Track View Selected From The Quad Menu.

You Can Customize The User Interface In A Variety Of Ways: By Adding Keyboard Shortcuts, Moving Toolbars And Command Panels Around, Creating New Toolbars And Buttons, And Even Recording Scripts Into Toolbar Buttons. The User Interface Is High DPI Aware, And Ensures That You Have The Optimal Experience With Your Display Hardware.

Note: Some Images Of The User Interface (Icons, Toolbars, Etc.) Found Within 3ds Max Help May Be Of Older Versions Of The Software.

1. User Account Menu
2. Workspace Selector
3. Menu Bar
4. Main Toolbar
5. Ribbon
6. Scene Explorer
7. Viewport Layouts
8. Command Panel
9. Viewports
10. Max script Mini Listener
11. Status Line And Prompt Line
12. Isolate Selection Toggle and Selection Lock Toggle
13. Coordinate Display
14. Animation And Time Controls
15. Viewport Navigation Controls
16. Projects Toolbar
17. Topics In This Section

## Workspaces

The Workspaces Feature Lets You Switch Quickly Among Any Number Of Different Interface Setups. It Can Restore Custom Arrangements Of Toolbars, Menus, Viewport Layout Presets, And So On.

1. Floating And Docking

You Can Easily Customize Your Workspace By Floating And Docking Part Of The Interface, Such As Panels, Windows, Menu, Toolbars, And The Time Slider.

2. Special Controls

3ds Max Uses Some Special User Interface Controls, Which Are Described In This Topic.

3. Additional Keyboard Commands

This Topic Describes Some Commands That Are Provided Only As Customizable Actions. You Can Assign Them To A Keyboard Shortcut, A Menu, Or A Button By Using The Customize User Interface Dialog.

4. Toggling Dialogs

In Most Cases, You Can Close A Dialog With The Same Command Used To Open It. This Applies To Any Combination Of Input Methods, Including Menu, Toolbar Button, And Keyboard Shortcuts. For Example, You Can Open The Render Setup Dialog By Choosing Rendering > Render Setup, And Then Close It By Pressing F10 (Default Keyboard Shortcut). If A Dialog Is Available From A Menu, A Check Mark Appears Next To The Respective Command While It's Open.

1. To Start 3ds Max From The Command Line
2. Search 3ds Max Commands
3. Lets You Search For Actions By Name.

## II. LITERATURE SURVEY

1.The Making of "Farm House" by Umesh Sawant : The site is located at the foothills of the Pawangad, in Panhala hill station. The interesting location of the site provides us with scenic views of the Jotiba Temple, as well as the mighty Pawangad . The Site is slightly contoured with a gradual slope towards the north, allowing a view of the valley from the location. The Residence has been designed keeping in mind the topography of the site. The site being surrounded by natural elements from all four sides makes it perfect for a getaway house. The planning of the residence is spread over two floors and outdoor spaces. The project has a sense of flow from common to private areas and possesses a sense of openness due to the provision of maximum allowable openings on both sides. The whole modeling work has been done in 3ds max with various plugins and scripts. The main tools I used on this project in 3ds max are modelling, composition, materials, assets, lighting, rendering.

2. The Farmhouse Project By Ghaisas Developer : The document present three conceptual designs for an architectural project on a sloped site in Pune. This project takes a traditional approach with warm stones, sloping roofs and multi-level planning. Concept two is modern with clean lines, steel, glass and panoramic windows. Concept three is a fusion, blending traditional and modern elements with versatile spaces. All these concepts are aim to maximize views, integrate with nature and create a tranquil retreat that reflects its surroundings.

3. IS: 875 (Part 1) – 1987 for Dead Loads, Indian Standard Code Of Practice For Design Loads (Other Than Earthquake) For Buildings and Structures, All permanent constructions of the structure form the dead loads. The dead load comprises of the weights of walls, partitions floor finishes, false ceilings, false floors and the other permanent constructions in the buildings. The dead load loads may be calculated from the dimensions of various members and their unit weights. The unit weights of plain concrete and reinforced concrete made with sand and gravel or crushed natural stone aggregate may be taken as 24 KN/m<sup>3</sup> and 24 KN/m<sup>3</sup> respectively

4. IS 456 -2000, Indian standard code of practice for plain and reinforced concrete (fourth revision), Bureau of Indian Standards. This standard deals with the general structural use of plain and reinforced concrete. For the purpose of this standard, plain concrete structures are those where reinforcement, if provided is ignored for the determination of strength of the structures.

5. SP: 16 -1980, Design Aids for Reinforced Concrete to IS: 456-1978 (third revision), Bureau of Indian Standard. This is the explanatory handbook which covers the basis/source of each clause. The objective of these design aids is to reduce design time in the use of certain clauses in the Code for the design of beams, slabs and columns in general building structures. The charts and tables included in the design aids were used in calculation of footings and slabs.

Al-Kodmay et. al 2016[29] This paper explores the dual role of exterior bracing and diagrid systems in skyscraper design, emphasizing their structural efficiency and aesthetic potential. These systems reduce materials, enhance performance, and lower costs while serving as visually expressive elements that communicate structural logic and artistic creativity. By examining past, present, and future towers, the paper highlights how these structural systems can contribute to a building's urban identity through aesthetically pleasing and geometrically coherent designs. It synthesizes structural functionality with artistic expression, showcasing these systems as both practical and creative components in modern skyscraper architecture.

### **III. METHODOLOGY**

Gathering client requirements, site analysis, and initial layout sketching are the first steps in designing farmhouse with AutoCAD and 3ds Max. Create 2D floor designs for the ground floor using AutoCAD, making sure that all sections and elevations meet to local construction rules and specifications for dimensions and operation. After everything is finished, Import the designs to 3ds Max in order to create walls, floors, and roofs can be extruded and architectural features like stairs and home furnishings can be added to the 3D model. Use V-Ray to apply realistic materials and textures, adjust lighting and surroundings, and generate excellent graphics. Present the design for remarks and finalize 2D drawings and 3D visuals for construction and presentation.

Analyzing site specifics, architectural preferences, and any other design guidelines that affect the finished product are also included in this phase. AutoCAD, which is perfect for producing accurate 2D architecture drawings, is used to draft the layout in the following stage. Prior to creating complete floor plans for the ground and first levels, the procedure entails establishing the proper units and scales. These blueprints make sure every component is precisely dimensioned and include wall, door, window, staircase, and room layouts. To improve clarity, annotations like labels and measurements are added, and layers are utilized to arrange the drawing's various elements. For usage in the 3D modelling stage, the finished layout is subsequently saved as a.DWG file.

The 2D layout is imported into 3ds Max for 3D modelling after it is complete. The proper scale and orientation are carefully maintained while importing the DWG file into the software. Layer-based organization of imported data makes processing easier. Making walls and defining structural components like floors, ceilings, are the next steps in establishing the farmhouse house base geometry. Boolean operations are used to incorporate door and window openings, and architectural elements like columns and modelling are added to improve the farmhouse appearance. Texturing and the application of materials are done after the 3D structure has been model. Using 3ds Max's Material

Editor, realistic materials are applied to different villa components, and UV mapping is applied to ensure textures appear seamless. Because it adds depth and realism, lighting is a crucial component of this stage. Both artificial and natural lighting configurations are used, and sophisticated renderers like V-Ray or Arnold are frequently used to produce photorealistic results.

Rendering and visualization come next after the model and textures are ready. Key views of the farmhouse exterior and inside are captured by strategically placed cameras. The produced photos clearly display the farmhouse intricate design, and the render parameters are adjusted to guarantee high-quality output. To give a live view of the area, walkthroughs or animations can also be made if necessary Software such as Photoshop is used to post-process output photos. To improve the visual quality, brightness, contrast, and colour balance must be adjusted. Other effects like vegetation, sky, and ambient elements may be added to make the scene more lifelike.

Lastly, the results are checked against the original requirements. After rendered images and walkthroughs are reviewed and shared with stakeholders for advice. To make sure the finished design reflects the client's vision, any necessary changes are made in response to their feedback. High-resolution photos, animations, and 3D model files that are prepared for presentation or additional work are usually included in the deliverables. This thorough process ensures a precise and eye-catching representation of the farmhouse design.

#### IV. EXPERIMENTAL RESULTS

Figures shows the result of the layout of farmhouse outed in AutoCAD Software.

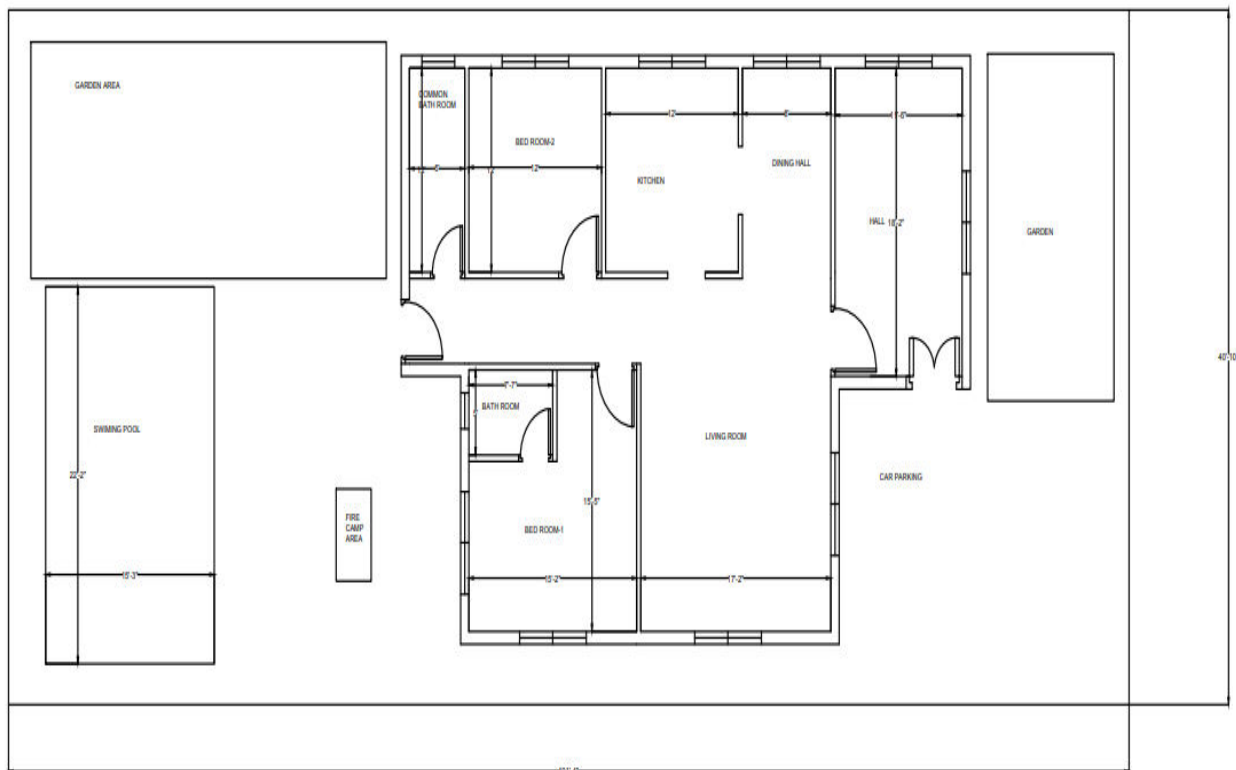
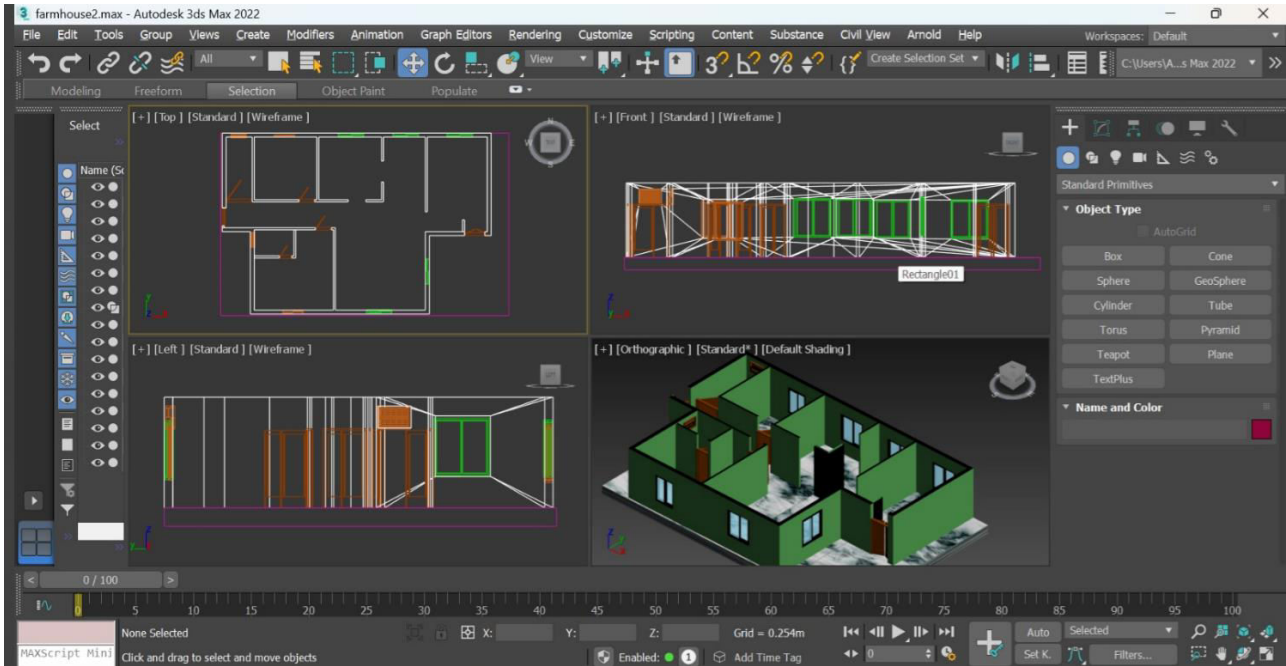
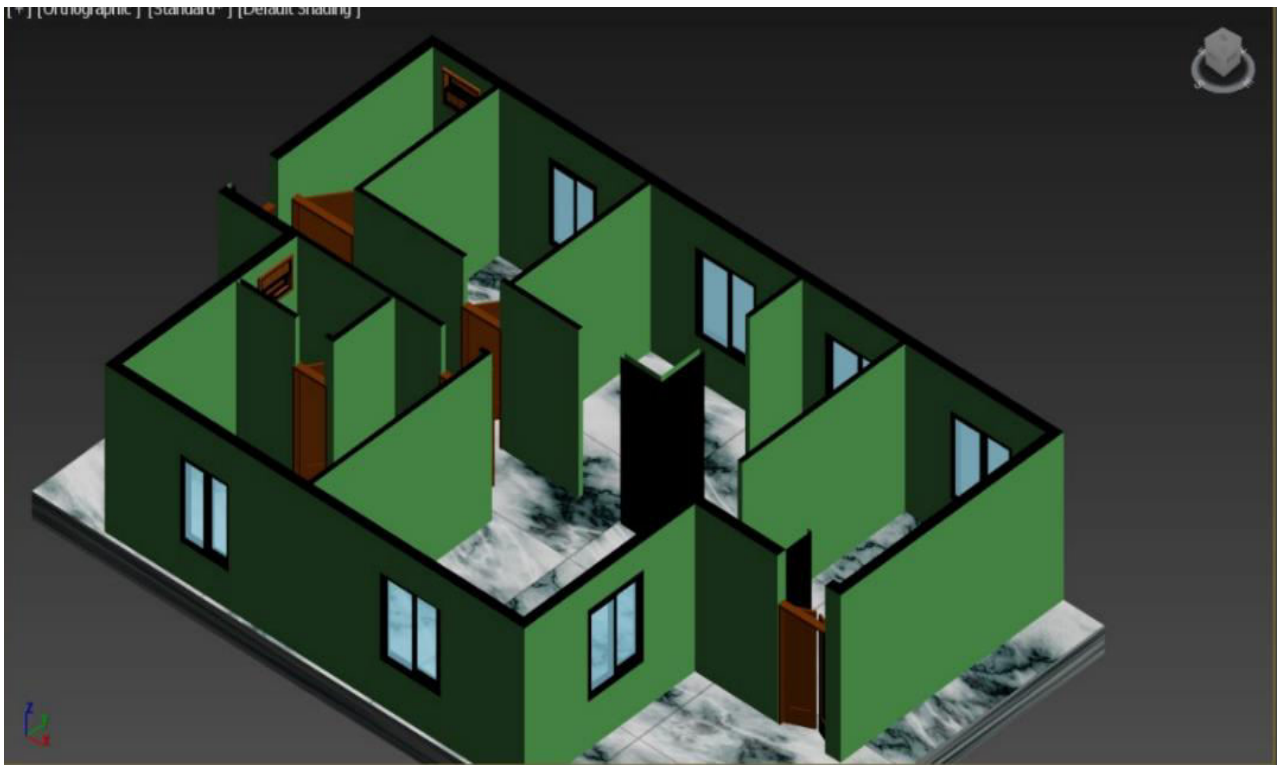


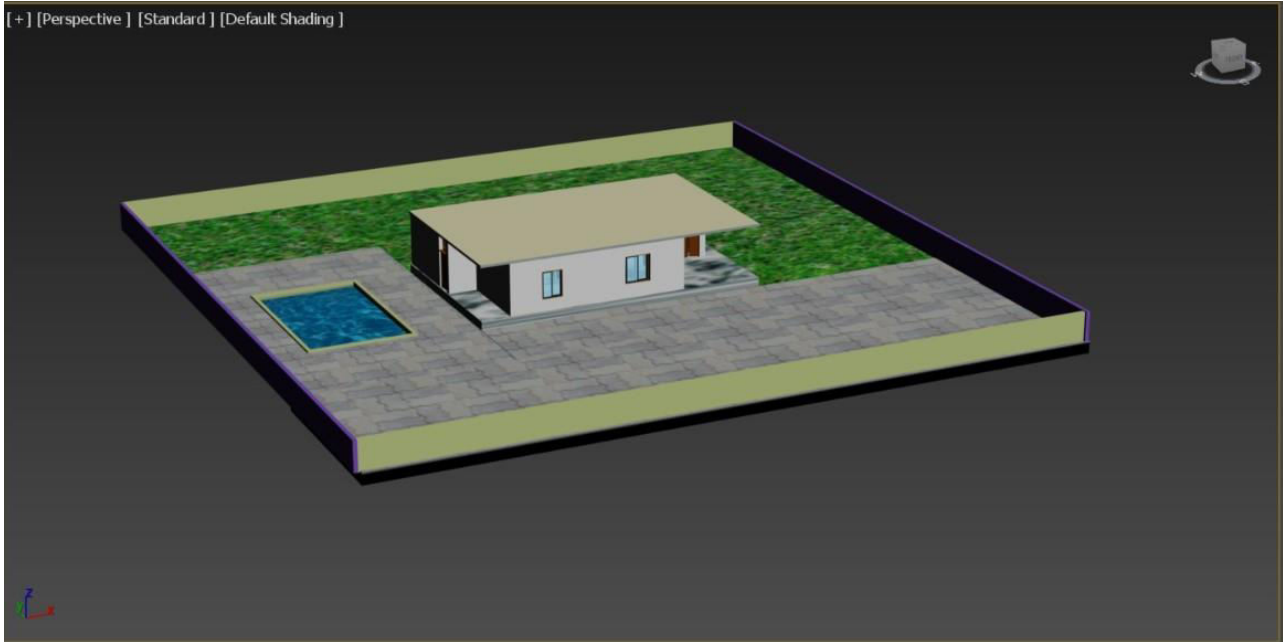
Fig. Shows the interface of the 3Ds Max software after importing the AutoCAD layouts



Fig, Show the interior sample designs of the our project



Final Fig. Shows the exterior elevation of the farmhouse



## V. CONCLUSION

The process of designing and visualizing a farmhouse using AutoCAD and 3ds Max combines precision, efficiency, and creativity. AutoCAD plays a critical role in ensuring accurate 2D layouts, which serve as the foundation for the duplex house design. On the other hand, 3ds Max brings the design to life with realistic 3D modelling, texturing, and rendering.

This workflow not only delivers precise and visually compelling results but also enhances communication with clients and stakeholders through high-quality visuals and walkthroughs. The flexibility to make iterative changes ensures the final output aligns with the client's vision. Together, AutoCAD and 3ds Max provide a powerful platform to create designs that are both functional and aesthetically impressive.

## REFERENCES

- 1.The Making of "Farm House" by Umesh Sawant
2. The Farmhouse Project By Ghaisas Developer



INTERNATIONAL  
STANDARD  
SERIAL  
NUMBER  
INDIA



# INTERNATIONAL JOURNAL OF INNOVATIVE RESEARCH

IN SCIENCE | ENGINEERING | TECHNOLOGY

 9940 572 462  6381 907 438  [ijirset@gmail.com](mailto:ijirset@gmail.com)



[www.ijirset.com](http://www.ijirset.com)

Scan to save the contact details