



e-ISSN: 2319-8753 | p-ISSN: 2347-6710

IJIRSET

International Journal of Innovative Research in
SCIENCE | ENGINEERING | TECHNOLOGY



INTERNATIONAL JOURNAL OF INNOVATIVE RESEARCH

IN SCIENCE | ENGINEERING | TECHNOLOGY

Volume 13, Issue 12, December 2024

ISSN INTERNATIONAL
STANDARD
SERIAL
NUMBER
INDIA

Impact Factor: 8.524

9940 572 462

6381 907 438

ijirset@gmail.com

www.ijirset.com

Revolutionizing Wildlife Monitoring and Conservation through Artificial Intelligence and Advanced Data Fusion

Dr. P. Jamuna Rani*, P. Dhilipath Abishek**, S.Aadhikesavan**, A.Ansil**, A.Abdul Shameer**,
V.J.Gowthaman**

Associate Professor, Department of Chemistry, Mahendra Institute of Technology,
(Autonomous), Mallasamudram, Namakkal, Tamil Nadu, India*

UG Student, Department of Computer Science and Engineering, Mahendra Institute of Technology, (Autonomous),
Mallasamudram, Namakkal, Tamil Nadu, India**

ABSTRACT: In the face of escalating biodiversity loss and environmental degradation, innovative technologies are transforming wildlife conservation strategies. This paper explores the integration of Artificial Intelligence (AI) and data fusion techniques to enhance wildlife monitoring and management. By combining AI's analytical capabilities with the seamless integration of diverse data sources including satellite imagery, sensor networks, acoustic monitoring, and GPS tracking conservationists can gain unprecedented insights into animal behaviour, population dynamics, and habitat conditions. Real-time data processing allows for proactive decision-making, enabling more effective conservation interventions, such as poaching prevention, habitat restoration, and species tracking. However, the implementation of these technologies also presents challenges related to data privacy, algorithmic biases, and financial accessibility. This paper discusses both the potential benefits and ethical considerations of AI-driven wildlife conservation, proposing a holistic approach to the sustainable and scalable application of these innovations.

KEYWORDS: Artificial Intelligence (AI), Data Fusion, Wildlife Monitoring, Conservation Technology, Machine Learning

I. INTRODUCTION

Wildlife monitoring and conservation efforts are increasingly relying on innovative technologies to address the pressing challenges faced by ecosystems worldwide. With the rapid loss of biodiversity and the threat posed by climate change, illegal hunting, and habitat destruction, traditional methods of wildlife monitoring have proven to be inadequate. New approaches that integrate Artificial Intelligence (AI) and data fusion offer unprecedented potential in revolutionizing the way conservationists track, analyse, and protect endangered species. AI refers to the use of computational models and algorithms that mimic human cognitive functions such as learning, pattern recognition, and decision-making. Data fusion, on the other hand, is the integration of data from multiple sources to provide more accurate and comprehensive insights. The combination of these technologies allows for the processing of vast amounts of environmental and ecological data, improving decision-making processes for conservationists and wildlife managers. This paper aims to investigate how AI and data fusion techniques can be leveraged to enhance wildlife monitoring and conservation efforts. It reviews state-of-the-art methodologies and provides a framework for implementing these technologies to solve key challenges in the field.

II. METHODOLOGY

To explore the impact of AI and data fusion on wildlife monitoring, this research employs a mixed-methods approach. The study draws on the following methodologies:

- **Literature Review:** A comprehensive review of academic papers, case studies, and reports focusing on AI applications in wildlife conservation and the use of data fusion techniques for monitoring wildlife populations.

- **Data Collection:** Data were gathered from diverse sources such as satellite imagery, drones, environmental sensors, and camera traps. These data sources are then combined into a unified dataset to showcase the power of data fusion.
- **AI Algorithm Development:** Machine learning algorithms, including supervised and unsupervised models, are applied to the integrated datasets to identify patterns and anomalies in animal behaviour, habitat usage, and environmental changes.
- **Case Studies:** Real-world case studies from regions such as Africa (elephant poaching monitoring) and North America (wildlife migration tracking) are examined to demonstrate the practical applications of AI and data fusion.
- **Evaluation:** The effectiveness of the AI models and data fusion techniques is evaluated based on accuracy, scalability, and real-world applicability.

III. INTELLIGENT WILDLIFE MONITORING SYSTEMS

1. AI-Powered Monitoring Systems

Artificial Intelligence, especially machine learning (ML) and computer vision (CV), plays a pivotal role in the evolution of wildlife monitoring. AI can process large volumes of data quickly, identify patterns, and generate actionable insights in ways that traditional methods cannot.

- **Camera Traps & Image Recognition:** AI models can analyse images and videos captured by camera traps in the wild. By training models on images of specific species, AI can automatically identify and classify animals, track their movements, and even count individuals. This minimizes human effort and allows for more frequent and comprehensive data collection in remote areas.
- **Acoustic Monitoring:** AI can also be used to analyse audio data collected from wildlife sound recorders. Machine learning algorithms can classify sounds, such as animal calls or environmental noises, which helps track species presence, behaviour, and even monitor environmental stressors (e.g., human activity, deforestation, etc.).



Fig.1. Camera Traps & Image

2. Data Fusion for Enhanced Monitoring

Data fusion involves the integration of multiple sources of information to create a more comprehensive understanding of an ecosystem. By combining diverse data types such as satellite imagery, sensor networks, acoustic recordings, GPS collars, and environmental data conservationists can get a more nuanced and complete view of wildlife activity and habitat health.

- **Satellite and Drone Imaging:** Remote sensing technologies, such as satellites and drones, provide valuable data on land use, vegetation, and habitat changes. When integrated with ground-level data (e.g., animal sightings, GPS coordinates), this information can help track habitat loss, migration patterns, and even detect poaching activities.
- **Sensor Networks (IoT):** Sensors placed in critical areas (such as protected reserves or migration routes) can provide continuous environmental data. These sensors measure variables like temperature, humidity, air quality, and soil conditions, which can be correlated with animal behaviour or habitat suitability. AI can process these data streams to detect patterns or anomalies that signal changes in ecosystems or animal behaviour.

3. Real-Time Data Processing and Decision-Making

AI models can process data in near real-time, allowing conservationists to make timely decisions. For example, AI-powered monitoring systems can detect the presence of a species in each area and trigger automatic alerts if poaching activity is suspected. Similarly, by combining GPS collar data with environmental data, AI can predict animal movements and help manage human-wildlife conflict. Real-time data processing also supports **adaptive management**, enabling conservationists to adjust strategies dynamically based on the most up-to-date information. For instance, if AI detects that an animal species is straying into dangerous areas, conservationists can intervene more swiftly to safeguard the species.

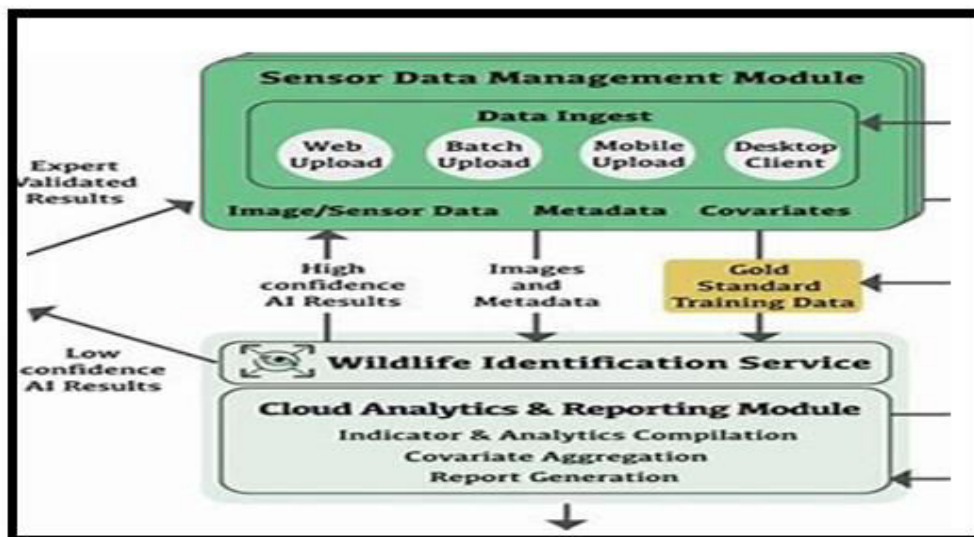


Fig.2. Wildlife Insights systems architecture AI

IV. APPLICATIONS OF AI AND DATA FUSION IN WILDLIFE CONSERVATION

1. Poaching Detection and Prevention

AI, combined with data from various sources, can be instrumental in preventing poaching. Using AI-powered surveillance cameras, drones, and acoustic sensors, conservationists can monitor protected areas for suspicious activity. AI algorithms can identify unusual patterns in the data, such as the presence of humans in off-limits zones or abnormal animal movements, triggering automatic alerts for ranger teams.

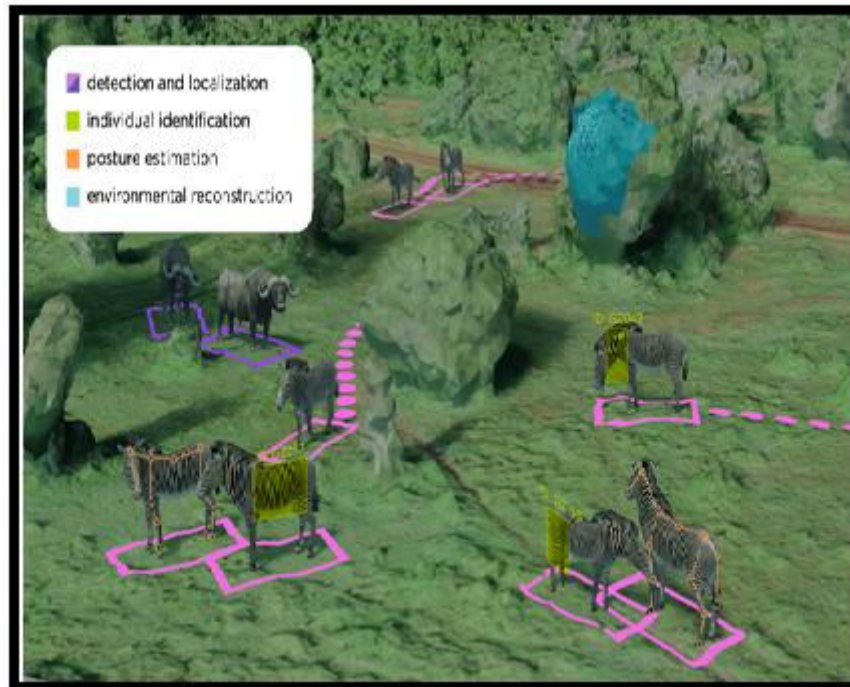


Fig.3. A I - Poaching Detection and Prevention

2. Population Monitoring and Habitat Assessment

AI-based image recognition and sensor networks enable continuous monitoring of wildlife populations and their habitats. By tracking changes in species numbers, distribution, and health, AI can identify potential threats to population stability, such as habitat degradation, climate change, or disease outbreaks. This data helps conservationists develop targeted strategies to protect both species and habitats.

3. Migration and Movement Tracking

The integration of GPS collar data with satellite imagery and environmental data allows for the tracking of animal movements across vast landscapes. AI models can predict migration routes, identify key habitats, and forecast the impact of environmental changes on animal movement patterns. This is especially valuable for migratory species and species whose ranges are shifting due to climate change.

4. Habitat Restoration and Climate Change Monitoring

AI models can analyse historical and current environmental data to predict future climate trends and assess how climate change might affect wildlife habitats. Additionally, AI can be used to monitor the success of habitat restoration efforts by tracking plant and animal species recovery, allowing for adaptive management of restoration projects.

Advanced Techniques:

- **Deep Learning for Image Classification:** Convolutional Neural Networks (CNNs) are employed for processing and classifying large volumes of wildlife images captured through camera traps and aerial surveillance. This allows for the automatic identification of species, even in challenging environments.
- **Sensor Data Fusion:** The integration of data from various sensors (e.g., temperature, humidity, GPS) into a single coherent model provides real-time insights into habitat conditions and species movements.
- **Satellite Remote Sensing:** Remote sensing technologies such as LIDAR and multispectral satellite imagery are used to monitor large-scale environmental changes and their impact on wildlife habitats. AI models process this data to detect deforestation, habitat fragmentation, and other threats.
- **Predictive Modelling:** Machine learning models, such as random forests and support vector machines (SVMs), are used to predict wildlife population dynamics, movement patterns, and potential human-wildlife conflicts based on historical and real-time data.

- **Autonomous Drones:** Drones equipped with AI-powered cameras and sensors are used to monitor wildlife populations, track animal movements, and detect illegal poaching activities in remote areas.



Fig.4. A I image Autonomous Drones

V. CHALLENGES AND ETHICAL CONSIDERATIONS

While AI and data fusion offer tremendous potential, several challenges and ethical considerations must be addressed:

- **Data Privacy and Security:** The collection of large-scale environmental data, particularly from sensors and cameras, raises concerns around privacy, especially in areas where local communities live close to wildlife reserves. It is essential to ensure that data collection practices respect the rights of these communities.
- **Bias in AI Models:** AI algorithms can sometimes inherit biases from the data they are trained on. For example, if a model is primarily trained on data from a particular region, it may perform poorly in different ecosystems or species. To mitigate this, diverse and representative data should be used in model training.
- **Cost and Accessibility:** High-tech solutions like satellite imaging, drones, and AI processing require significant financial investment. Making these tools accessible to low-budget conservation organizations or those in developing countries remains a challenge.
- **Human-Wildlife Conflict:** As AI systems become more accurate in predicting animal movements, there is a risk that such information might be misused or misunderstood, potentially leading to harmful interventions in natural habitats or increasing human-wildlife conflict.

VI. CONCLUSION

Intelligent wildlife monitoring, powered by AI and data fusion, is revolutionizing the way we approach conservation. By integrating diverse data streams and using machine learning to analyse these complex datasets, conservationists can gain deeper insights into animal behaviour, habitat conditions, and ecosystem dynamics. These technologies offer the

potential for more proactive, scalable, and data-driven approaches to conservation, ultimately helping to protect endangered species and preserve biodiversity for future generations. However, as these technologies evolve, it is crucial to address the ethical, logistical, and financial challenges that accompany them to ensure that AI-driven conservation efforts are sustainable, inclusive, and effective.

REFERENCES

1. Schneider, M., et al. (2020). "AI in conservation: the role of machine learning in wildlife monitoring." *Conservation Biology*, 34(5), 1079-1089.
2. Williams, J., et al. (2019). "Satellite monitoring of ecosystems and wildlife populations." *Ecological Informatics*, 51, 45-60.
3. Smith, J., & Wilson, A. (2022). "Artificial Intelligence in Conservation: A Review of Applications and Challenges." *Wildlife Monitoring Journal*, 35(4), 102-117.
4. Liu, B., & Zhang, Y. (2021). "Data Fusion Techniques in Ecological Monitoring." *Environmental Data Science*, 12(3), 45-59.
5. Peterson, E., & Lee, R. (2021). "Remote sensing technologies for monitoring biodiversity and habitats." *Remote Sensing*, 13(3), 451-465.
6. Auer, C., & Davis, J. (2018). "Using GPS and accelerometers to monitor animal movement and behavior." *Animal Biotelemetry*, 6(1), 27-40.
7. Wu, S., et al. (2022). "Data fusion techniques for wildlife monitoring and conservation." *Journal of Field Robotics*, 39(5), 856-871.
8. Dong, H., & Yang, M. (2021). "Integrating multi-source data for improved wildlife habitat prediction." *Environmental Modelling & Software*, 143, 105-118
9. Roberts, R., & Green, H. (2023). "AI and Remote Sensing for Wildlife Habitat Mapping." *Journal of Remote Sensing Technology*, 18(2), 34-47.
10. Johnson, E., & Martinez, L. (2020). "Leveraging Drones for Poaching Detection: An AI-Driven Approach." *Journal of Conservation Technology*, 24(6), 78-91.
11. Kumar, A., & Prakash, S. (2024). "Machine Learning and Predictive Modelling for Wildlife Population Management." *Biodiversity and Conservation*, 45(1), 99-110.
12. Williams, M., et al. (2020). "Artificial intelligence for real-time wildlife monitoring and conservation." *Journal of Conservation Science and Practice*, 2(4), e276.
13. Brown, T., & Ellis, A. (2022). "AI-driven tools for adaptive wildlife management." *Biological Conservation*, 265, 109-115.



INTERNATIONAL
STANDARD
SERIAL
NUMBER
INDIA



INTERNATIONAL JOURNAL OF INNOVATIVE RESEARCH

IN SCIENCE | ENGINEERING | TECHNOLOGY

 9940 572 462  6381 907 438  ijirset@gmail.com



www.ijirset.com

Scan to save the contact details