



e-ISSN: 2319-8753 | p-ISSN: 2347-6710

IJRSET

International Journal of Innovative Research in
SCIENCE | ENGINEERING | TECHNOLOGY



INTERNATIONAL JOURNAL OF INNOVATIVE RESEARCH

IN SCIENCE | ENGINEERING | TECHNOLOGY

Volume 13, Issue 7, July 2024

ISSN INTERNATIONAL
STANDARD
SERIAL
NUMBER
INDIA

Impact Factor: 8.423

9940 572 462

6381 907 438

ijirset@gmail.com

www.ijirset.com

AI Driven Breakthroughs in Cancer Research and Treatment

Chittari Ramya Sai, Nagesh B S

P.G. Student, Department of Master of Computer Applications, RNS Institute of Technology, Channasandra, Bangalore, India

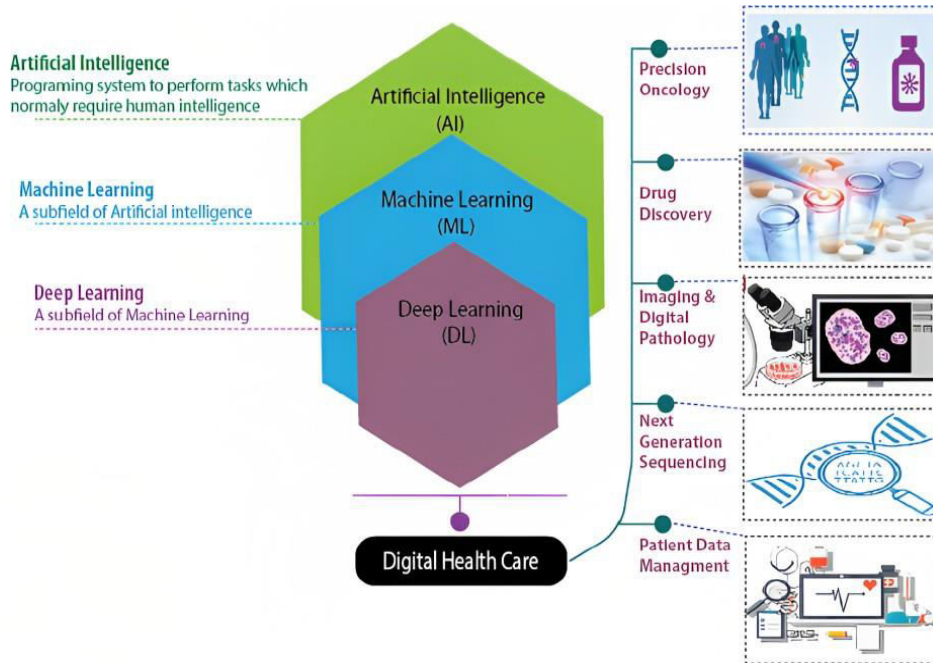
Associate Professor, Department of Master of Computer Applications, RNS Institute of Technology, Channasandra, Bangalore, India

ABSTRACT: Artificial intelligence (AI) is considered a successful wellspring of the framework that has demonstrated substantial execution in numerous domains, for instance. The field of Oncology research portrayed monstrous accomplishment with AI technology improvement. This makes AI a valuable asset for improving cancer diagnosis, predicting treatment responses and developing targeted molecular therapies using its ability to deal with large amounts of data and identify complex patterns. In the present paper, we will elaborate on diverse forms of AI applications in oncology research including analysis of medical images and genomics data and clinical records using relevant examples. We shall also bring to light the hurdles, horizons that AI lands in this sector like data quality requirements and ethical considerations of incorporating Artificial Intelligence into Healthcare's framework. Plus, we will also cover a few of the recent strides with AI-based cancer research - deep learning models to detect malignant lesions based on images and overall survival for patients. The prospective direction of AI telescoping in oncology research will be touched upon. The articles from the years 2009 to 2021 from the Web of Science and EBSCO and the EMBASE base have been selected in accordance with PRISMA norms. Importance of AI technology as a research aid in the field of oncology and the perspectives for the development of the same in the wake of cancer-related healthcare.

KEYWORDS: Artificial intelligence (AI), Oncology, Pathology, Deep learning.

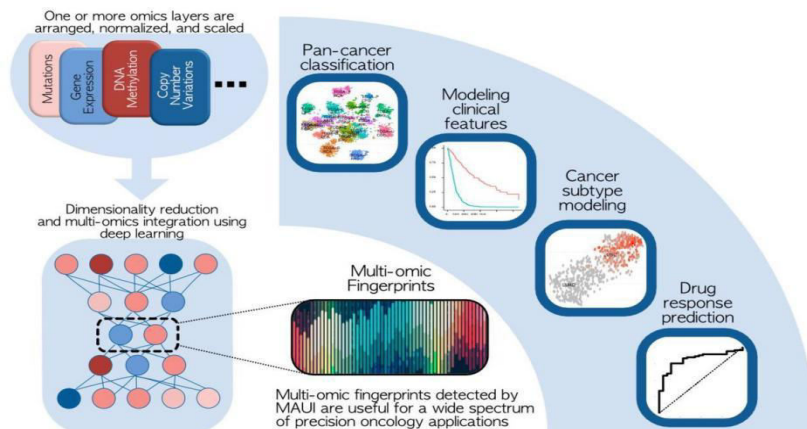
I. INTRODUCTION

A cancer, hell of a complicated and challenging condition that affects billions lives across the globe. Numerous forgotten questions regarding how cancer starts, progresses, and responds to therapy despite substantial advancements in the treatment of cancers. In the last 10-15 years, artificial intelligence (AI) has taken oncology research by storm as it created opportunities for researchers to tame mountains of data and extract new knowledge about this disease. The advent of artificial intelligence (AI) technology has revolutionised cancer research. Artificial Intelligence is now the key tool in increasing screening efficiency, cancer diagnose precision and patient-tailored therapy design as AI can tackle complex pattern recognition analyses on massive data sizes. Over the past several years, AI-powered applications used in oncology have produced promising results and contributed to more timely cancer research outcomes that benefit patients. The teams are working hard to bring these new advancements to the table. They're collaborating closely to create specialized remedies that can make a real difference in people's lives. The AI tools are quite impressive, & the experts are leveraging them in creative ways to tackle this challenge. It's an exciting time in oncology research, with lots of promising developments on the horizon. I'm optimistic that we'll continue to see AI driving meaningful progress that improves outcomes for patients.



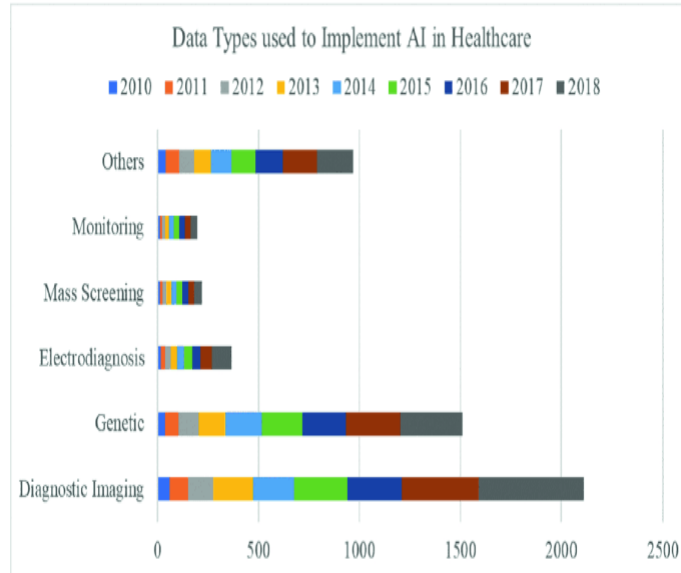
II. RELATED WORK

Artificial Intelligence (AI) – it's got a whole lot of uses globally of oncology, let me tell you! It's helping doctors and researchers make some real breakthroughs in cancer diagnosis, treatment, and more. AI algorithms that can spot and classify those pesky cancer tumors in medical scans like CT, MRI, and X-rays. & they can even predict if a cancer might extend to additional body parts[1]. AI can analyze all that genetic data to determine the mutations that result in the development of cancer and progression. This info is gold for creating personalized treatment plans tailored to each patient's unique genetic profile. AI can also recommend the best treatment options for a patient based on the numerous factors. This personalized approach is really showing promise in improving treatment outcomes and reducing those pesky side effects. AI can also lend a hand to doctors by providing decision support tools.



These predictive analytics and risk models help the docs to take thoughtful decisions about the treatment plans. It's like having a brilliant assistant right there in the exam room. And let's not forget about drug discovery and development. These AI systems can plow through mountains of biological and chemical data to find new drug targets and predict how effective they'll be[4]. This could seriously speed up the whole process, leading to more effective cancer

treatments down the line. AI can keep an eye on patient data like vital signs and biomarkers, looking for the alterations that could show the disease progression or treatment response.

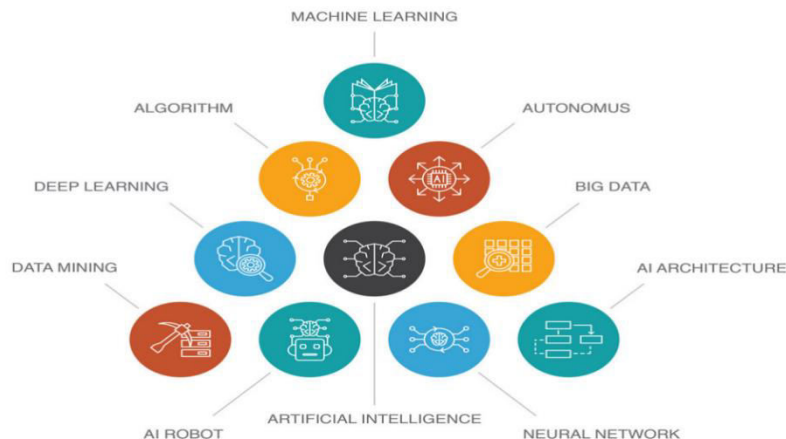


This helps doctors adjust the treatment plan as needed for best results for their patients. AI is making some really incredible progress in the world of oncology. It's helping doctors and researchers make better judgments, progress personalized treatments, and ultimately, improve the outlook for cancer patients everywhere.

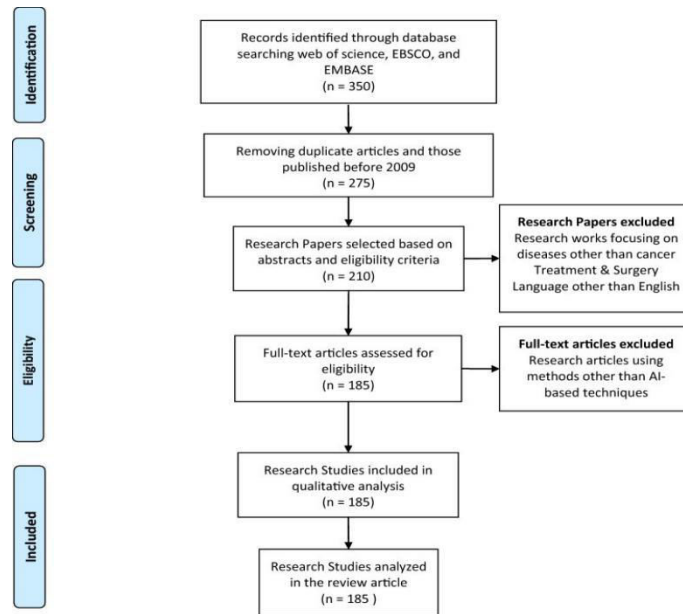
III. METHODOLOGY

This systematic review, & it was conducted under the PRISMA guidelines, searched three electronic databases (web of science, EBSCO, & EMBASE) using specific queries related to Artificial Intelligence, Cancer Diagnosis, Early Detection, Machine Learning, & Deep Learning[4]. After removing duplicates & studies that centered on illnesses other than cancer, care & surgery, or a tongue different from English, 185 articles that had been chosen for analysis. Research that employed techniques other than AI-based techniques were excluded from further analysis.

ARTIFICIAL INTELLIGENCE



A PRISMA flowchart - it's depicting the screening process, & it's presented[1]. The study found that AI-based techniques, they have demonstrated encouraging outcomes in improving the accuracy & effectiveness of traditional cancer diagnosis methods. AI models, which they have utilized in classify different types of cancer & identify important features for diagnosis.

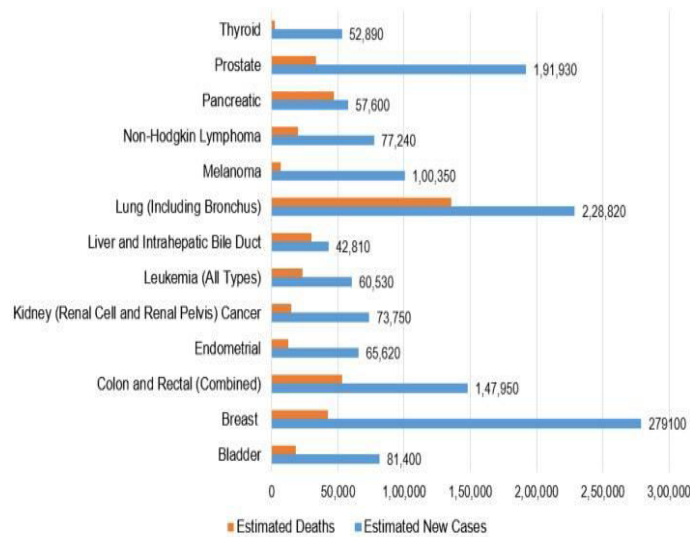


Moreover, AI-based approaches, which have been employed to predict the likelihood of developing certain types of cancer & identifying risk factors. The investigation also noted a number of difficulties in adopting AI-based techniques in cancer diagnosis & early detection. These challenges, they include data security & privacy concerns, bias in the available datasets, & the need for human expertise to verify the decisions made by AI systems. Additionally, the study highlighted the need for more standardized & transparent reporting of studies using AI-based techniques. Overall, the study - it provides valuable insights into the existing situation & potential of AI-based techniques in cancer diagnosis & early detection[4]. Outcomes of this systematic review, they can provide insight for upcoming investigation efforts & guide the progression of more effective & accurate cancer diagnosis & early detection methods.

IV. AI CHALLENGES IN CANCER

Good quality & available data is essential for developing accurate & reliable AI algorithms[1]. But the problem is that incomplete, inconsistent, or biased data can really affect the performance of these algorithms. So the quality & availability of data need to be seriously addressed to improve the performance of AI in oncology. Another issue is that many AI algorithms are just plain difficult to understand, which makes it hard to trust their decisions. This lack of interpretability & transparency can limit their adoption in clinical practice. So there's a real need for greater interpretability & transparency to ensure these AI algorithms are trusted & widely used[3]. Utilizing AI in healthcare is also subject to regulatory governance, which can prove to be extremely difficult for researchers & clinicians.

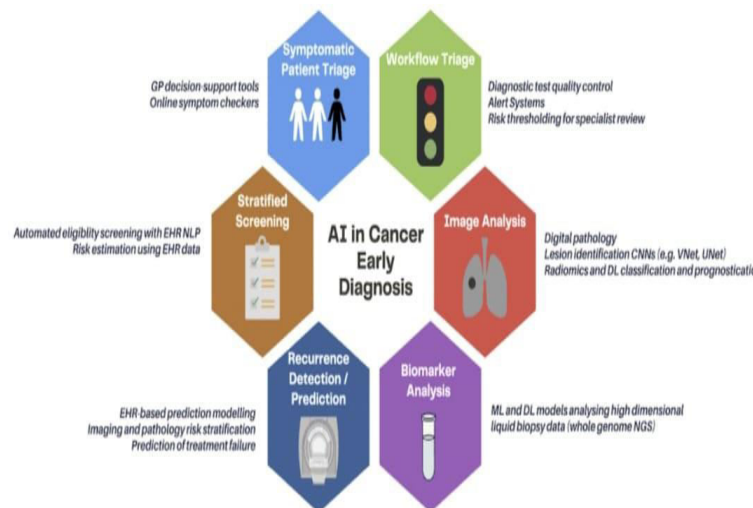
New Cases and deaths in different Cancers in the year 2020



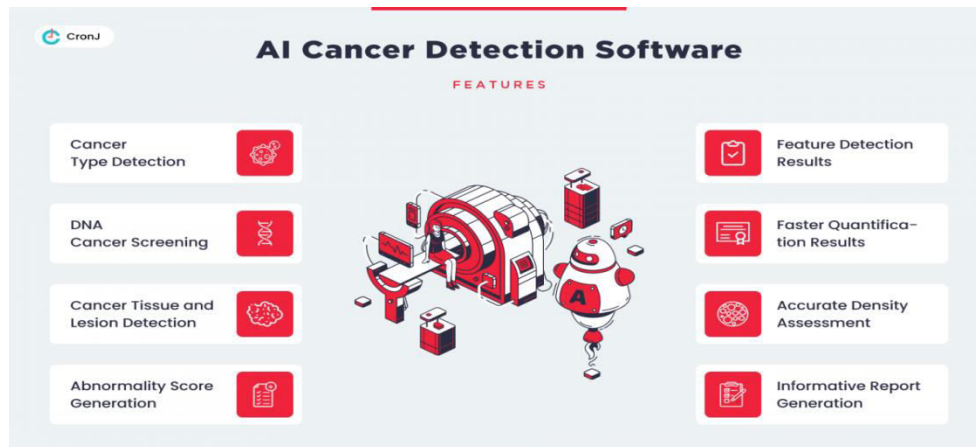
Clear & consistent regulatory frameworks are needed to make sure algorithms used are safe & effective. Implementing AI algorithms in clinical practice can also be tricky because of the intricacy of healthcare systems & the need to integrate the algorithms with existing workflows & technologies. To really improve patient outcomes, these clinical implementation challenges must be addressed. And let's not forget the ethical considerations, like issues around bias, fairness, & accountability[2]. It's super important to develop & use AI algorithms in an ethical & responsible way. Addressing all these challenges is anticipated to be crucial for realizing the full potential applications of AI in cancer & improving patient outcomes.

V. FUTURE IMPROVEMENT AND DEVELOPMENT

AI is capable to transform the cancer fight. Well, it can enhance prevention, diagnosis, therapy, & day-to-day management of cancer[3]. In the context of cancer, AI can aid in risk stratification. Additionally, it is able to recognize causal links & improve referral practices. However, AI for cancer has gone through a hype cycle, with various phases like the Trough of Disillusionment & Productivity, which may limit its utility. To overcome these obstacles, specialists in research, medicine, government, & community implementation must work together[2]. The focus should be diverted from high-incidence cancer towards those with lesser medical progress, such as lung, colon, & breast cancers. Explainable AI & interpretable deep learning are developing topics in AI research for cancer.



These can increase model precision, equity, responsibility, consistency, and openness in the process of making decisions. The advancement of AI models in oncology necessitates collaboration between biologists & computer scientists. Cancer Moonshot is an instance for cancer community dedicated to increasing research & enhancing data on cancer interchange to expedite scientific breakthroughs in the study of cancer. Artificial intelligence possesses the capacity to revolutionize treatment for cancer in a big way - by boosting prevention, diagnosis, & therapy[3].



Numerous hurdles to overcome, like the requirement for increased cooperation between specialists in research, medicine, government, & community implementation[2]. AI models are explainable & easy to understand. With ongoing effort & investment though, AI can help us provide more personalized & effective cancer thoughtfulness, which will eventually result in better outcomes for the patients.

VI. CONCLUSION

AI has demonstrated tremendous promise in cancer research in terms of improving personalized medicine, early diagnosis, treatment planning, and detection. Artificial intelligence (AI) can find patterns and insights that human analysis alone might overlook by utilizing enormous datasets and sophisticated algorithms. AI-powered imaging systems can shorten diagnosis times and increase the precision of cancer detection. In addition to helping to create individualized treatment plans based on each patient's unique profile, machine learning models can forecast treatment outcomes. AI can also expedite drug development and discovery by finding promising therapeutic compounds faster and more effectively than with conventional techniques. AI can improve patient selection and monitoring in clinical trials, leading to more consistent and trustworthy outcomes. Large, high-quality datasets are still necessary, biases in AI models must be addressed, data security and privacy must be maintained, and regulatory approval for AI-based tools must be obtained. The application of AI in cancer research has the potential to revolutionize the field and result in better patient outcomes and more effective healthcare systems, despite certain obstacles. In order to fully utilize AI in the fight against cancer, researchers, doctors, and AI specialists must continue to collaborate.

REFERENCES

- [1] Esteva, A., Kuprel, B., Novoa, R. A., Ko, J., Swetter, S. M., Blau, H. M., & Thrun, S. (2017). Nature, 542(7639), 115-118. <https://doi.org/10.1038/nature21056>
- [2] Litjens, G., Kooi, T., Bejnordi, B. E., Setio, A. A. A., Ciompi, F., Ghafoorian, M., ... & van der Laak, J. A. W. M. (2017). Medical Image Analysis, 42, 60-88. <https://doi.org/10.1016/j.media.2017.07.005>
- [3] Kermany, D. S., Goldbaum, M., Cai, W., Valentim, C. C. S., Liang, H., Baxter, S. L., ... & Zhang, K. (2018). Identifying Medical Diagnoses and Treatable Diseases by Image-Based Deep Learning. Cell, 172(5), 1122-1131.e9. <https://doi.org/10.1016/j.cell.2018.02.010>
- [4] McKinney, S. M., Sieniek, M., Godbole, V., Godwin, J., Antropova, N., Ashrafian, H., ... & Suleyman, M. (2020). International evaluation of an AI system for breast cancer screening. Nature, 577(7788), 89-94. <https://doi.org/10.1038/s41586-019-1799-6>



INTERNATIONAL
STANDARD
SERIAL
NUMBER
INDIA



INTERNATIONAL JOURNAL OF INNOVATIVE RESEARCH

IN SCIENCE | ENGINEERING | TECHNOLOGY

 9940 572 462  6381 907 438  ijirset@gmail.com



www.ijirset.com

Scan to save the contact details