



e-ISSN: 2319-8753 | p-ISSN: 2347-6710

IJRSET

International Journal of Innovative Research in
SCIENCE | ENGINEERING | TECHNOLOGY



INTERNATIONAL JOURNAL OF INNOVATIVE RESEARCH

IN SCIENCE | ENGINEERING | TECHNOLOGY

Volume 13, Issue 7, July 2024

ISSN INTERNATIONAL
STANDARD
SERIAL
NUMBER
INDIA

Impact Factor: 8.423

9940 572 462

6381 907 438

ijirset@gmail.com

www.ijirset.com

AI's Impact on Employment: Shaping Tomorrow's Workforce

Muskan Nagdeo, Prof. Monali Rajput

Department of MCA, Vivekanand Education Society's Institute of Technology, Mumbai, India

Project Guide, Department of MCA, Vivekanand Education Society's Institute of Technology, Mumbai, India

ABSTRACT: The rapid advancement of Artificial Intelligence (AI) technologies is profoundly reshaping the employment landscape on a global scale. This study delves into the dual impact of AI, examining both the displacement of jobs and the creation of new employment opportunities across a wide range of industries. As AI systems become increasingly capable of performing tasks traditionally carried out by humans, there is a growing concern about the potential for significant job losses. However, this transformation also brings the promise of new job categories and the enhancement of productivity, highlighting a complex interplay between job destruction and job creation. Through an in-depth analysis of various sectors, including manufacturing, healthcare, finance, and education, this study identifies the evolving skill requirements necessary for the workforce to thrive in an AI-driven economy. The research underscores the importance of adaptability and lifelong learning as key components for workers to remain competitive in the changing job market. Furthermore, the study explores the moral and societal consequences of integrating AI, addressing issues such as privacy, ethical considerations, and the potential for increased inequality. The findings suggest that while AI presents significant challenges, it also offers substantial opportunities for innovation and economic growth. To maximize AI's potential while ensuring social equity, strategic policies and workforce development initiatives are essential. These strategies should focus on fostering inclusive growth by providing reskilling and upskilling programs, encouraging collaboration between the public and private sectors, and promoting equitable access to AI technologies.

I. INTRODUCTION

Background: AI is reshaping industries by automating tasks and driving innovation. Unlike previous technologies that focused on repetitive tasks, AI encompasses advanced machine learning and data analytics, creating new economic opportunities.

Objectives: This research analyzes AI's impact on job roles and new employment opportunities, examining sectoral adaptations and skill requirements. It aims to provide insights into AI's role in the modern economy.

Significance: Understanding AI's impact on employment is vital for policymakers, businesses, and workers to develop strategies for a balanced and inclusive AI-driven economy.

II. LITERATURE REVIEW

The literature on AI and employment is extensive, with researchers exploring various dimensions of this transformative relationship. Key focal points encompass the effects of automation on job displacement, the emergence of new job categories, and the evolving skill requirements in today's workforce.

- Job Displacement:** AI automates routine tasks, leading to job losses in industries like manufacturing (Brynjolfsson & McAfee, 2014; Autor, 2015).
- Job Creation:** AI creates new roles in fields like AI development and data science (Chui et al., 2016).
- Skill Requirements:** Emphasizes the need for continuous learning in data analysis and AI ethics (Bessen, 2019; World Economic Forum, 2020).
- Ethical Implications:** AI raises issues of bias and economic inequality, necessitating ethical guidelines (Noble, 2018; O'Neil, 2016; UN, 2019).

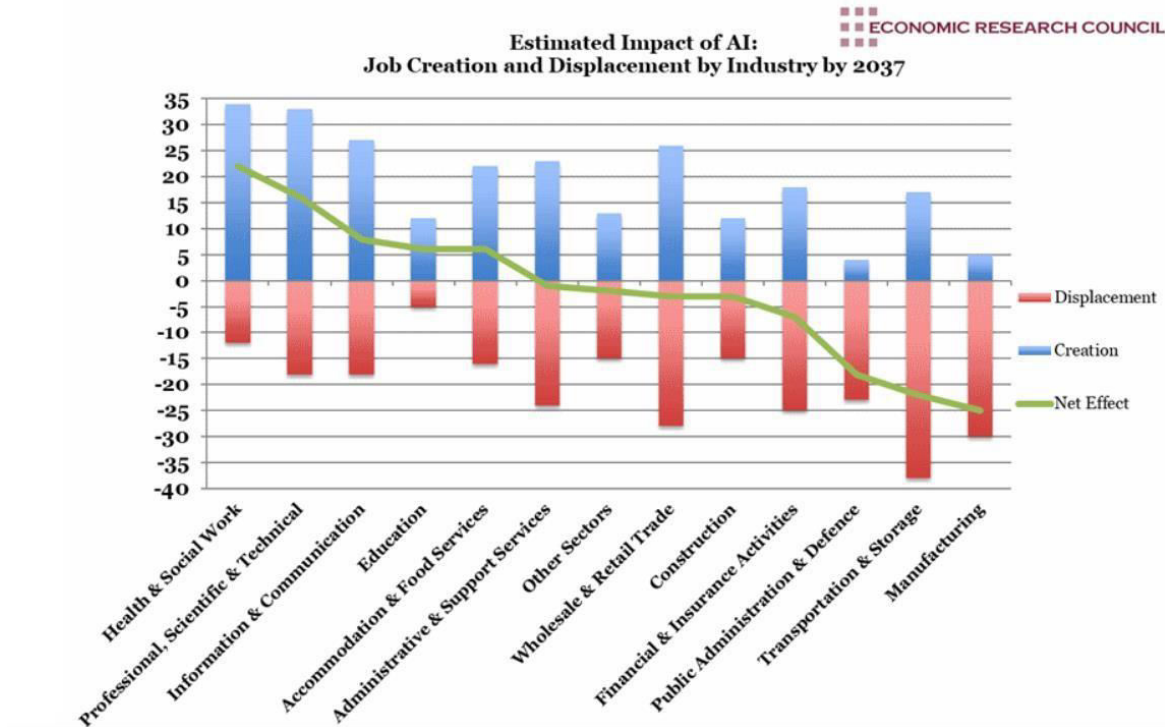


Fig. 1

III. RESEARCH QUESTIONS

This research seeks to explore critical questions to grasp the full impact of AI on employment:



Fig. 2

1. In what ways is AI-driven automation reshaping job roles across different industries?

- This question seeks to explore the extent to which AI is automating routine tasks and displacing workers in different sectors. It will examine the types of jobs most susceptible to automation and the specific tasks being replaced by AI technologies.

2. What new job categories and roles are emerging as a result of AI advancements?

- This question focuses on the emergence of new job opportunities in growing fields like AI development, data science, and machine learning. It will analyze the demand for these roles and the skills required to fill them.

3. What skills are essential for workers to succeed in an AI-driven economy?

- This question seeks to determine the essential skills workers need to stay competitive in the job market. It will investigate the significance of technical abilities, like programming and data analysis, alongside soft skills, such as critical thinking and adaptability.

4. What are the ethical and societal impacts of extensive AI integration into the workforce?

- This question examines the broader ethical and social considerations of AI integration, including issues of bias, fairness, and economic inequality. It will explore the potential for AI to exacerbate existing disparities and the measures needed to ensure equitable outcomes.

5. What policy recommendations and workforce development strategies can help mitigate the risks and maximize the benefits of AI?

- This question focuses on identifying effective policy measures and workforce development strategies to handle the transition to an AI-driven economy. It will explore the role of education and training programs, regulatory frameworks, and support mechanisms for displaced workers.

By exploring these questions, the study aims to offer a thorough understanding of how AI is transforming employment and offer actionable insights to navigate the challenges and opportunities of an AI-enhanced future.

IV. METHODOLOGY

The methodology for this study includes a multi-faceted approach to comprehensively understand AI's impact on employment. The research employs both quantitative and qualitative methods to capture the complex dynamics of AI-driven changes in the job market.

Data Collection: Combines quantitative data from various sources and qualitative insights from interviews and surveys.

Sector Analysis: Examines AI's impact on sectors like manufacturing, healthcare, finance, and IT.

Skill Gap Analysis: Identifies skill gaps between current workforce capabilities and AI-related job demands.

Case Studies: Reviews companies successfully integrating AI, highlighting best practices.

Ethical Impact Assessment: Analyzes AI's broader social and ethical impacts.

Policy Analysis: Evaluates existing policies and suggests improvements.

V. CASE STUDY ANALYSIS

1. Manufacturing Sector:

The manufacturing sector, notably companies like General Motors and Siemens, has significantly integrated AI-driven automation to boost production efficiency and cut costs. AI systems enhance quality control, predictive maintenance, and supply chain optimization, outperforming human capabilities in speed and accuracy.

Example Case: General Motors



Fig. 3

General Motors (GM) has deployed AI to automate welding, painting, and assembly, enhancing production efficiency and quality. While this led to some job displacement, GM invested in workforce training to upskill employees for more advanced roles.

2. XHealthcare Sector:

In the healthcare sector, AI is being used to improve diagnostic accuracy, personalize patient care, and streamline administrative processes. Companies like IBM Watson Health and Google Health are at the forefront of integrating AI into healthcare, offering solutions that can analyze medical data, assist in diagnosis, and recommend treatment options.

Example Case: IBM Watson Health



Fig. 4

IBM Watson Health's AI tools assist in diagnosing diseases and creating personalized treatment plans by analyzing extensive medical data. While these tools can improve patient outcomes, they also highlight worries about job displacement and the need for new capabilities in data analysis and AI management.

3. Finance Sector:

The finance sector is experiencing significant transformation due to AI technologies that enhance data analysis, risk management, and customer service. Financial institutions such as JPMorgan Chase and Goldman Sachs are using AI to automate processes, detect fraud, and provide personalized financial services to customers.

Example Case: JPMorgan Chase



Fig. 5

JPMorgan Chase uses AI to automate tasks like loan processing and fraud detection, improving efficiency and reducing errors. This shift has changed job roles, requiring skills in AI and data analytics, prompting the company to offer training programs for its employees.

4. Information Technology (IT) Sector:

The IT sector is both a driver and a beneficiary of AI advancements. Companies such as Google and Microsoft are leading the development of AI technologies and incorporating them into their products and services. This has resulted in the emergence of employment prospects in fields like AI development, data science, and cybersecurity.

Example Case: Google



Fig. 6

Google is at the forefront of AI research and development, with applications ranging from search algorithms to autonomous vehicles. The company has created numerous job opportunities in AI-related fields, including machine learning engineering, data analysis, and AI ethics. Google has also established initiatives to promote AI education and training, ensuring that its workforce is equipped with the skills needed to leverage AI technologies effectively.

VI. ETHICAL AND SOCIAL IMPLICATIONS

The rapid adoption of Artificial Intelligence (AI) technologies brings forth significant ethical and social issues that need attention to ensure fair and ethical integration of AI into society.

The following key issues highlight the complexities and necessary considerations associated with widespread AI use:

1. **Bias and Discrimination:** AI systems, trained on biased datasets, can produce discriminatory outcomes, such as facial recognition errors for people of color. Addressing this requires diverse data and thorough testing.
2. **Economic Inequality:** AI's automation of routine jobs risks increasing economic inequality and displacing low-skilled workers. Allocating resources to education and training is crucial to adequately prepare individuals for new employment opportunities.
3. **Impact on Social Structures:** AI-driven shifts in work, like the rise of the gig economy, lead to more flexible yet insecure employment, raising issues about job security and workers' rights. Policies should ensure fair wages and benefits.
4. **Ethical AI Development:** AI must be developed with ethical guidelines, emphasizing transparency, accountability, and privacy to benefit society and uphold human rights.

VII. POLICY RECOMMENDATIONS

To effectively navigate the shift to an AI-driven economy and mitigate the potential risks linked with AI adoption, it is crucial to implement proactive policy measures and workforce development strategies.

Key recommendations incorporate:

1. Prioritize Education and Training:



Fig. 7

Governments and organizations must allocate resources to education and training programs to equip workers with the skills required for new job opportunities in an AI-driven economy. This involves promoting STEM education, supporting lifelong learning, and providing access to upskilling and reskilling programs. These efforts should emphasize both technical skills, such as programming and data analysis, and soft skills, like critical thinking and adaptability.

2. Promote Inclusive Economic Growth:



Fig. 8

Policies should aim to foster inclusive economic growth by ensuring that the advantages of AI are shared fairly across society. This includes supporting small and medium-sized enterprises (SMEs) in adopting AI technologies, promoting digital inclusion, and providing targeted support to workers in low-skilled and routine jobs who are most at risk of displacement.

3. Develop Ethical Guidelines and Regulatory Frameworks:



Fig. 9

Governments and industry leaders should work together to develop ethical guidelines and regulatory frameworks regulating AI use. These guidelines should tackle issues like bias, fairness, transparency, and accountability, ensuring AI is employed responsibly and benefits society. Regulatory frameworks should also provide oversight and enforcement mechanisms to ensure compliance with ethical standards.

4. Support Worker Transition and Job Security:

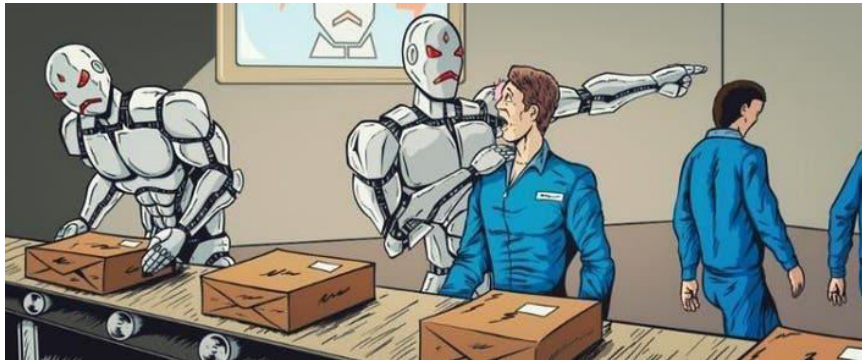


Fig. 10

To support workers affected by AI-driven job displacement, policies should provide access to social protection and support services, such as unemployment benefits, job placement programs, and retraining opportunities. It is also important to promote job security by ensuring that workers in the gig economy and other non-traditional forms of employment have access to fair wages, benefits, and protections.

5. Encourage Innovation and Collaboration:



Fig. 11

To harness the full potential of AI, it is essential to promote innovation and collaboration between governments, industry, academia, and civil society. This includes supporting research and development in AI technologies, fostering public-private partnerships, and creating platforms for knowledge sharing and collaboration. By working together, stakeholders can develop solutions that maximize the benefits of AI while addressing the challenges and risks.

VIII. CONCLUSION

The rapid progress in AI is reshaping the job market, presenting both opportunities and obstacles for workers, businesses, and policymakers. Although AI can boost productivity and stimulate economic growth, it also presents significant risks, such as job displacement, economic inequality, and ethical issues. To effectively manage the

complexities of an AI-driven future, it is crucial to adopt proactive policy measures and workforce development strategies that promote inclusive economic growth and ensure the fair distribution of AI benefits across society. By investing in education and training, establishing ethical guidelines, and fostering collaboration, we can leverage AI's potential to build a more prosperous and equitable future for everyone.

REFERENCES

- [1] Autor, D. H. (2015). Why Are There Still So Many Jobs? The History and Future of Workplace Automation. *Journal of Economic Perspectives*, 29(3), 3-30.
- [2] Bessen, J. (2019). AI and Jobs: The Role of Demand. NBER Working Paper.
- [3] OECD. (2018). *OECD Employment Outlook 2018*. Paris: OECD Publishing.
- [4] World Economic Forum. (2020). *The Future of Jobs Report 2020*. World Economic Forum.
- [5] "Fourth Industrial Revolution" by Klaus Schwab
- [6] "Artificial Intelligence and the Future of Work: Prospects and Initiatives" by Peter K. Antonioni and Robert D. Atkinson



INTERNATIONAL
STANDARD
SERIAL
NUMBER
INDIA



INTERNATIONAL JOURNAL OF INNOVATIVE RESEARCH

IN SCIENCE | ENGINEERING | TECHNOLOGY

 9940 572 462  6381 907 438  ijirset@gmail.com



www.ijirset.com

Scan to save the contact details