



e-ISSN: 2319-8753 | p-ISSN: 2347-6710

# IJRSET

International Journal of Innovative Research in  
**SCIENCE | ENGINEERING | TECHNOLOGY**



# INTERNATIONAL JOURNAL OF INNOVATIVE RESEARCH

IN SCIENCE | ENGINEERING | TECHNOLOGY

Volume 13, Issue 7, July 2024

**ISSN** INTERNATIONAL  
STANDARD  
SERIAL  
NUMBER  
INDIA

Impact Factor: 8.423

9940 572 462

6381 907 438

[ijirset@gmail.com](mailto:ijirset@gmail.com)

[www.ijirset.com](http://www.ijirset.com)

# Onroad Vehicle Breakdown Assistance System

Mr. Biju Balakrishnan, Mr.S.Gopinath.

Assistant Professor, Department of Master of Computer Applications, Hindusthan College of Engineering and  
Technology, Coimbatore, India

II MCA Student, Department of Master of Computer Applications, Hindusthan College of Engineering and  
Technology, Coimbatore, India

**ABSTRACT:** The “On Road Vehicle Breakdown Assistance” through Online is a mobile based portal developed in android. The Servicer Booking system will allow online booking of the user, User register their details, login the system and search the nearest servicer shop location. User can book the servicer through using the system. The Employee can view the user request. And user can make the payment using online or cash on delivery. In this project the admin can add and update the servicer details. The User can register and login the system using his/her user name and password. After the login process the user can view and the servicer details updated by admin. After viewing the servicer details the user can book the servicer at the vehicle breakdown location. User sends the request to admin. Admin allocate the employee to the user. The overall process is maintained and monitor by admin only. In this project the employee can register and login the system using his/her user name and password. After the login process the employee can view the user and delivery details. With this changing world we also have to change ourselves according to the current requirements of the market, there was no proper vehicle servicer available for the people to get servicer in rare places. Like a forest area, user can't get the servicer or anything easily.

**KEYWORDS:** Vehicle Breakdown Assistance, Online Servicer Booking, Mobile-based Portal, Real-time Service Requests, Remote Vehicle Repair.

## I. INTRODUCTION

### 1.1 PREAMBLE

The "On Road Vehicle Breakdown Assistance" is a cutting-edge Android-based mobile portal that transforms how users manage unexpected vehicle breakdowns. By allowing users to register, log in, and search for nearby licensed servicer shops, this Servicer Booking system streamlines the process of securing mechanical assistance, even in remote or hard-to-reach areas. It offers flexible payment options, including online and cash on delivery, enhancing user convenience. Employees can promptly view and respond to service requests, while admins maintain and update servicer details to ensure accuracy and reliability. Upon receiving a service request, the admin allocates an employee to the user's location, overseeing the entire process to guarantee efficient service delivery. Addressing the increasing need for dependable vehicle servicing in isolated regions, this system modernizes vehicle service management, ensuring users receive timely and professional assistance in alignment with today's dynamic market demands.

### 1.2 ONROAD VEHICLE BREAKDOWN ASSISTANCE SYSTEM

The “On Road Vehicle Breakdown Assistance” through Online is a mobile based portal developed in android. The Servicer Booking system will allow online booking of the user, User register their details, login the system and search the nearest servicer shop location. User can book the servicer through using the system. The Employee can view the user request. And user can make the payment using online or cash on delivery. In this project the admin can add and update the servicer details. The User can register and login the system using his/her user name and password. After the login process the user can view and the servicer details updated by admin. After viewing the servicer details the user can book the servicer at the vehicle breakdown location. User sends the request to admin. Admin allocate the employee to the user. The overall process is maintained and monitor by admin only. In this project the employee can register and login the system using his/her user name and password. After the login process the employee can view the user and delivery details. With this changing world we also have to change ourselves according to the current requirements of the market, there was no proper vehicle servicer available for the people to get servicer in rare places. Like a forest area, user can't get the servicer or anything easily.

### 1.3 PROBLEM DESCRIPTION

The "On Road Vehicle Breakdown Assistance" mobile portal addresses the critical issue of providing timely and efficient vehicle servicing in remote or inaccessible areas, where traditional services are unavailable. Users face significant challenges when their vehicles break down in isolated locations, such as forested areas, due to the lack of readily available servicers. This system allows users to register, log in, and book licensed servicers online, ensuring they can receive necessary mechanical assistance promptly. By enabling employees to view requests and admins to manage servicer details and allocations, the system ensures a streamlined and reliable response to breakdowns, catering to the evolving needs of a fast-paced world and enhancing the overall user experience.

### 1.4 OBJECTIVE

The "On Road Vehicle Breakdown Assistance" through Online is a mobile based portal developed in android. The Servicer Booking system will allow online booking of the user, User register their details, login the system and search the nearest servicer shop location. User can book the servicer through using the system. The Employee can view the user request. And user can make the payment using online or cash on delivery. In this project the admin can add and update the servicer details. The User can register and login the system using his/her user name and password. After the login process the user can view and the servicer details updated by admin. After viewing the servicer details the user can book the servicer at the vehicle breakdown location. User sends the request to admin. Admin allocate the employee to the user. The overall process is maintained and monitor by admin only. In this project the employee can register and login the system using his/her user name and password. After the login process the employee can view the user and delivery details. With this changing world we also have to change ourselves according to the current requirements of the market, there was no proper vehicle servicer available for the people to get servicer in rare places. Like a forest area, user can't get the servicer or anything easily.

### 1.5 SCOPE

The scope of the "On Road Vehicle Breakdown Assistance" project involves developing an Android-based mobile portal that facilitates efficient vehicle service booking and management. Users can register, log in, search for the nearest servicer shop, book services, and make payments online or via cash on delivery. Admins can manage and update servicer details, allocate service requests to employees, and monitor the entire process. Employees can log in, view user requests, and provide the required services. The system aims to address the lack of accessible vehicle servicing in remote areas, ensuring users receive timely assistance regardless of their location.

## III. SYSTEM ANALYSIS

### 2.1 EXISTING SYSTEM

In an existing system there are users who have their own mechanic database which is very minimal. And also they have no idea if their vehicles are broke down or had any mechanical issue in remote locations or any long distant locations from their known mechanic shops. Users with the contacts of people at the particular place may look for a help from them only if they are ready to do. It is not possible to find out the suitable mechanic for the desired service at remote locations. The only way they have is to look for any other transportation at the time of issue and then they need to get a mechanic to the particular location at which they have left their vehicle.

### 2.2 PROPOSED SYSTEM

The Vehicle Service Management System allows users to search for a list of licensed mechanics either at any specified location or nearby locations. This functionality is designed to assist users who encounter unexpected mechanical issues with their vehicles. When such situations arise, users can rely on the system to locate qualified mechanics capable of providing road assistance for cars. These mechanics are registered and verified, ensuring that only professionals with appropriate licenses and expertise are listed. They can promptly respond to service requests and perform repairs directly at the user's location, effectively resolving mechanical problems and ensuring the smooth operation of the user's vehicle.

IV. PROJECT DESCRIPTION

3.1 FLOW DIAGRAM

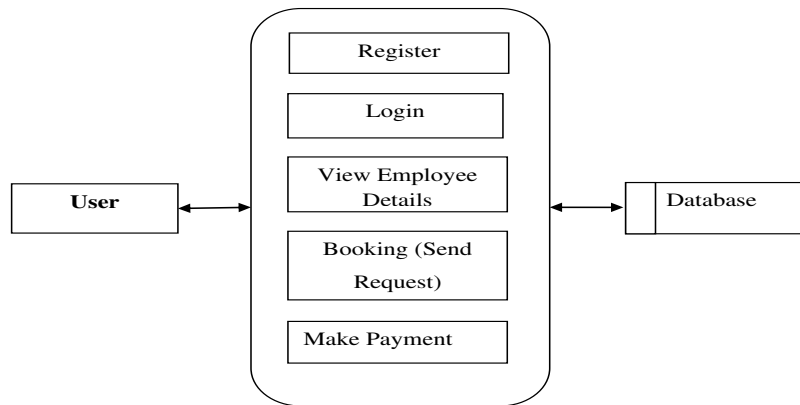


FIG 1. FLOW Diagram

3.2 ER DIAGRAM

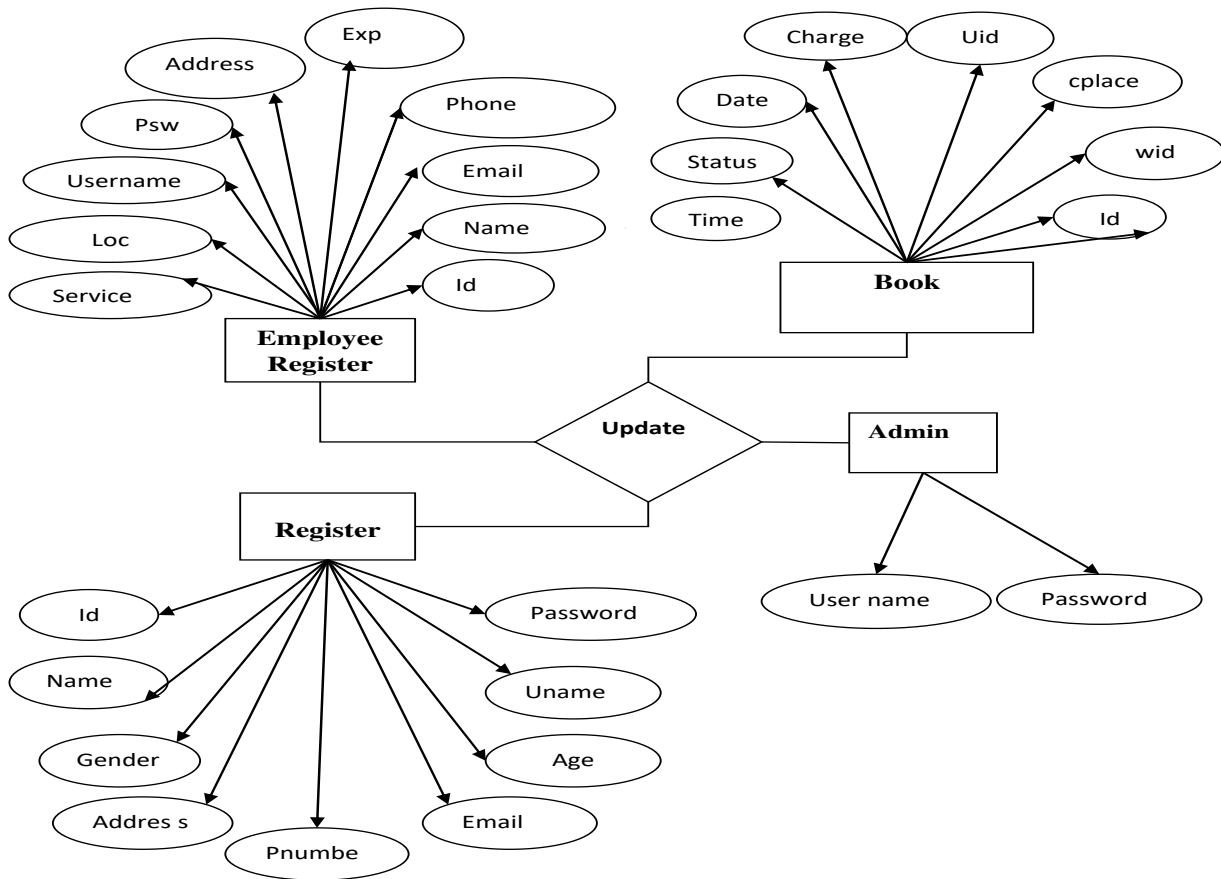


FIG.2 ER DIAGRAM



### 3.3 FRONT END: PYTHON

Java front-end development involves building client-side elements for web and desktop applications, leveraging frameworks like JavaServer Faces (JSF), Spring MVC, and Vaadin for web development, and Swing and JavaFX for desktop GUIs. While Swing offers a rich set of components for complex UIs, JavaFX provides a modern approach with features like hardware acceleration and CSS support, enabling the creation of visually appealing and high-performance desktop applications. A key aspect of Java front-end development is maintaining a clean separation between UI and business logic through design patterns such as Model-View-Controller (MVC), enhancing code organization and maintainability. Developers must handle user input, manage events, and update the UI dynamically, requiring a strong understanding of Java's event-driven programming model to create responsive, interactive applications that offer a seamless user experience.

### 3.4 BACK END SQL

Structured Query Language (SQL) is a powerful programming language used for managing and manipulating relational databases. SQL enables users to perform a wide range of tasks, including querying data, updating records, and managing database structures. By utilizing SQL, users can create databases and tables, insert and retrieve data, update existing records, and delete data that is no longer needed. One of the core functionalities of SQL is its ability to execute complex queries that filter, sort, and aggregate data, making it an essential tool for data analysis and reporting. SQL supports various commands such as SELECT, INSERT, UPDATE, DELETE, and JOIN, each serving a specific purpose in database operations. Additionally, SQL allows for the creation of views, stored procedures, and triggers, which enhance the efficiency and automation of database management tasks.

SQL is used across various industries to handle large volumes of data and ensure data integrity and security. It is the backbone of many database management systems (DBMS) like MySQL, PostgreSQL, Oracle Database, and Microsoft SQL Server. SQL's standardized syntax and its widespread adoption make it a fundamental skill for database administrators, developers, and data analysts. With the ability to define user permissions and implement transaction control, SQL ensures that data remains consistent and secure, even in multi-user environments. Moreover, advanced features such as indexing and query optimization techniques allow for the efficient retrieval and processing of data. Overall, SQL's robust capabilities and versatility make it indispensable in the world of data management, enabling organizations to leverage their data effectively for informed decision-making.

## IV. IMPLEMENTATION

### 4.1 Requirement Analysis:

- Define and document the project requirements based on stakeholder needs and expectations.
- Identify key features, user roles, and functionalities required for the application.

### 4.2 UI/UX Design:

- Create wireframes and design mockups for the application's user interface (UI).
- Focus on intuitive navigation, clear layout, and seamless user experience.
- Use design tools such as Sketch, Adobe XD, or Figma for UI design.

### 4.3 Frontend Development:

- Set up the development environment using Android Studio.
- Implement UI designs using XML layouts, incorporating navigation components, buttons, input fields, and other UI elements.
- Write frontend logic using Java or Kotlin, handling user interactions and data input.

### 4.4 Backend Development:

- Set up Firebase project for backend services including Authentication, Realtime Database, and Cloud Messaging.
- Implement backend logic for user authentication, registration, and data storage.
- Develop algorithms for taxi booking, real-time tracking, payment processing, and notification handling.

- Ensure security measures are in place to protect user data and transactions.

#### 4.5 API Integration:

- Integrate Google Maps API for location-based services, including geocoding, reverse geocoding, and real-time tracking.
- Implement payment gateway integration for secure processing of booking fees.
- Utilize Firebase Cloud Messaging (FCM) for push notifications to users.

#### 4.6 Testing:

- Perform unit testing to ensure individual components function as expected.
- Conduct integration testing to verify interactions between frontend, backend, and external APIs.
- Test the application on different devices and screen sizes to ensure compatibility and responsiveness.
- Perform user acceptance testing (UAT) with a group of testers to gather feedback and identify any issues or bugs.

#### 4.7 Refinement and Optimization:

- Address any issues or bugs identified during testing.
- Optimize the application for performance, scalability, and resource efficiency.
- Refine UI/UX based on user feedback and usability testing results.

#### 4.8 Deployment:

- Prepare the application for deployment to the Google Play Store.
- Generate signed APK files and upload them to the Play Store Developer Console.
- Complete the necessary metadata, including app descriptions, screenshots, and promotional graphics.
- Publish the application to the Play Store for public availability.

#### 4.9 Post-Deployment Support:

- Monitor user feedback and reviews on the Play Store and address any reported issues promptly.
- Release updates and new features based on user feedback and market trends.
- Maintain backend services and infrastructure to ensure continued reliability and security.

#### 4.10 WORKING

The "On Road Vehicle Breakdown Assistance" system. It includes several entities and their attributes: Employee Register, Book, Register, and Admin. Users can register by providing their ID, name, gender, address, phone number, email, age, and username/password. Employees also register with similar details, including service information and experience. Users can log in, search for and book services, and the booking details include user ID, date, time, status, charge, and location (cplace). The admin oversees the system, managing service updates and ensuring smooth operation. Once a booking is made, the admin assigns an available employee to address the breakdown request. Employees can view user requests and respond accordingly. The system automates service management, reducing manual processes and increasing efficiency and accessibility, especially in remote locations.

## V. RESULT ANALYSIS

The result analysis of the "On Road Vehicle Breakdown Assistance" system indicates significant improvements in operational efficiency and user satisfaction. The automated forms for admin, employee, and user interactions streamline the registration, login, service booking, and payment processes, reducing manual effort and minimizing errors. The secure storage of user and employee details enhances data integrity and privacy. The intuitive interfaces ensure ease of use, allowing users to quickly access services and make payments, while employees can efficiently manage service requests and updates. Overall, the system enhances service availability, especially in remote areas, leading to faster response times and improved user experiences, fulfilling the evolving requirements of the market.

The provided test cases validate essential functionalities across an administrative, employee, and user interaction system. They confirm successful login for admins, employees, and users with correct credentials.

Registration processes for employees and users ensure accurate storage of details in the database. Adding service details and completing bookings validate the system's ability to store service and product information accurately. Payment processing verifies secure handling of user card details. These scenarios cover fundamental operations while suggesting the potential for expanded testing to include edge cases and error scenarios, ensuring robustness and reliability in all system interactions.

## VI. CONCLUSION

This project entitled as "On Road Breakdown Assistance" has been developed to satisfy all the proposed requirements. The process of servicer booking details is safe and secure. The system reduces the possibility of the manual problem and time. User friendliness is the unique feature of this system. The system is highly interactive and flexible for further enhancement. The coding is done in a simplified and easy to understandable manner so that other team trying to enhance the project can do so without facing much difficulty. The documentation will also assist in the process as it has also been carried out in a simplified and concise way.

## VII. FUTURE ENHANCEMENT

This project, titled "On Road Breakdown Assistance," has been meticulously developed to fulfill all proposed requirements, ensuring a comprehensive and reliable solution for vehicle breakdown situations. The servicer booking process within the system is designed to be both safe and secure, leveraging robust authentication and data encryption techniques to protect user information and transaction details. By automating and streamlining the booking process, the system significantly reduces the potential for manual errors and cuts down on the time required for users to secure assistance. One of the standout features of this system is its user-friendliness, which ensures that individuals, regardless of their technical proficiency, can navigate the platform with ease and efficiency. The intuitive interface and straightforward booking procedure facilitate a seamless user experience, promoting widespread adoption and satisfaction.

Moreover, the system is highly interactive, providing real-time updates and feedback to users, which enhances their confidence and trust in the service. Its flexibility allows for easy integration of additional features and enhancements, ensuring that the platform can evolve to meet future demands and technological advancements. The coding of the project has been done in a simplified and easily understandable manner, using clean and well-documented code practices. This thoughtful approach not only makes the current implementation robust but also ensures that any future development teams can enhance and expand the system with minimal difficulty. The accompanying documentation further supports this goal, providing clear and concise guidance on the system's architecture, functionality, and potential areas for improvement. This detailed yet accessible documentation ensures that the project's continuity and scalability are maintained, facilitating ongoing innovation and optimization.

## REFERENCES

1. <https://hackr.io/blog/best-android-books>
2. <https://www.guru99.com/best-android-app-development-books.html>
3. <https://bookauthority.org/books/beginner-android-development-books>
4. <https://www.geeksforgeeks.org/top-10-books-for-android-app-development/>
5. <https://data-flair.training/blogs/android-books/>



INTERNATIONAL  
STANDARD  
SERIAL  
NUMBER  
INDIA



# INTERNATIONAL JOURNAL OF INNOVATIVE RESEARCH

IN SCIENCE | ENGINEERING | TECHNOLOGY

 9940 572 462  6381 907 438  [ijirset@gmail.com](mailto:ijirset@gmail.com)



[www.ijirset.com](http://www.ijirset.com)

Scan to save the contact details