



e-ISSN: 2319-8753 | p-ISSN: 2347-6710

IJRSET

International Journal of Innovative Research in
SCIENCE | ENGINEERING | TECHNOLOGY



INTERNATIONAL JOURNAL OF INNOVATIVE RESEARCH

IN SCIENCE | ENGINEERING | TECHNOLOGY

Volume 13, Issue 7, July 2024

ISSN INTERNATIONAL
STANDARD
SERIAL
NUMBER
INDIA

Impact Factor: 8.423

9940 572 462

6381 907 438

ijirset@gmail.com

www.ijirset.com

Instantaneous Drowsiness Detection through Eye Movement Analysis

Nidhi B

PG Student, Department of MCA, PES Institute of Technology and Management, Shivamogga, India

ABSTRACT: One essential tool for lowering the number of traffic accidents brought on by tired drivers is the ability to detect drowsiness in drivers. This research monitors and identifies indicators of driver drowsiness using real-time video processing techniques. The device records a live video feed of the driver's face using a camera. The Dlib package is used to identify and analyze face landmarks in order to track eye movements. The number and duration of blinks, which are important markers of sleepiness, are calculated using the Eye Aspect Ratio (EAR). The technology alerts the driver when the EAR drops below a predetermined threshold for an extended length of time. This strategy guarantees prompt action, improving traffic safety by averting sleep-related collisions. Through the utilization of facial landmark identification and EAR analysis, the system offers a dependable and efficient means of monitoring driver attention and guaranteeing safer driving circumstances.

KEYWORDS: Machine Learning, Drowsiness Detection, Blinking, Yawning

I. INTRODUCTION

An inventive way to address driver fatigue, one of the main causes of traffic accidents, is driver drowsiness detection. In order to continuously monitor the driver's degree of awareness, this project merges facial landmark identification with real-time video processing. The Dlib library is used to process the video frames that the camera takes of the driver's face so that facial landmarks may be identified by the system. The Eye Aspect Ratio (EAR) is computed using these markers, particularly those surrounding the eyes. The eye opening is measured by the ear, which is also used to identify blink frequency and ocular closure duration—two important markers of tiredness. The technology sounds an alert to wake the driver when the EAR indicates that they have been closed their eyes for an extended amount of time. This project uses a simple yet efficient technique to track driver awareness without the need for extra hardware. The method offers a workable and effective approach for real-time drowsiness detection by concentrating on the EAR and using the Dlib library for face landmark detection. By putting this system in place, the likelihood of accidents brought on by tired drivers can be greatly decreased, making driving safer for all users of the road.

II. LITERATURE SURVEY

1. Kyong He Le, Whi , Hyu Kyu Cho, Byug Te Jag, "Evaluating Feature Extraction Techniques for Assessing Driver Drowsiness Levels"

This study investigates various feature methods to a driver's drowsiness level. It evaluates different techniques to identify the most effective ones for real-time applications. The authors emphasize the importance of selecting the right features to enormous the correctness of drowsiness detection systems. The paper presents comparative results and discusses the potential improvements in detection performance.

2. Ashi Kumar, Rush Pata, "Driver Drowsiness Detection System Leveraging Visual Behavior and machine Learning Techniques" The paper represents a monitoring system that visual behavior cues and ML algorithms to detect driver drowsiness. It highlights the use of closing of eyes timings, blink frequency, and head movements as key indicators. ML models are trained to recognize patterns associated with drowsiness. The system aims to provide timely alerts to prevent accidents by driver fatigue.

3. Cyun-Yiii Li, Pau Chag, Ala Wag, Chihhh-Peng Fn, "ML and Gradient "Statistical Approach for Real-Time Driver Drowsiness Monitoring"

This research focuses on a system using ml and gradiient statistics. It employs gradient-based feature extraction to enhance detection accuracy. The system processes real-time video data to monitor driver behavior and identifies

drowsiness signs. The paper discusses the implementation and efficiency of the proposed approach in real-world scenarios.

4. Chig-Ha Weg, Ying-Hsiu Lai, Shang-hong Li, “Driver sleepiness observation via a particular Temporal Deep Belief Network”

The authors propose a deep belief network for driver sleepiness observation. The model captures temporal dependencies in visual data to improve detection accuracy. It processes video frames to monitor eye and head movements, identifying drowsiness patterns. The paper demonstrates the model's superior performance compared to traditional methods and its potential for real-time applications.

5. Anji Georg, Aurobind Routtra, ““Real-time Eye Gaze Analysis” Classification Using cnn

This paper explores the use convolutional neural networks (CNN) for real-time eye direction classification. The CNN model processes eye images to determine gaze direction, which is crucial for detecting driver attention and drowsiness. The study highlights the high accuracy and efficiency of CNNs in handling visual data. It also discusses the implementation of the system for real-time monitoring in vehicles.

6. MResearch Lab, <http://mrl.cs.vsb.cz/>, 2018

The MResearch Lab provides extensive research resources and datasets related to driver drowsiness detection. It focuses on developing for monitoring driver behavior and preventing accidents. The lab's contributions include publicly available datasets, research publications, and tools for developing and testing drowsiness detection systems. Their work supports ongoing advancements in this critical safety domain.

7. Venkat Ram Redy Chira, Srinivasul Redy Uyala, Venkat Krishn Kishor Koli, “Deep CNN: A MLearning Approach for sleepiness monitoring of the driver Based on Es”

This paper presents a deep cnn approach for detecting driver sleepyness based on es analysis. The CNN model processes eye images to determine whether the driver's eyes are open or closed. The study demonstrates the high accuracy of deep learning techniques in detecting drowsiness. It also discusses the practical implementation and potential for real-time monitoring.

8. Mkusel Ngxand, Jules-Raymond Taamo, Michel Buke, “Driver sleepiness monitoring using Behavioral and ml Techniques: A Review of State-of-Art Techniques”

The authors review state-of-the-art techniques for DD detection using behavioral measures and machine learning. The paper covers various approaches, including visual behavior analysis, physiological signals, and hybrid methods. It provides a comprehensive overview of recent advancements and challenges in the field. The review aims to guide future research and develop of effective drowsiness detection systems.

9. T. Vogelpola, M. Kün, T. M. Vorath, “fallen sleep at the automatic Wheel—Sleepyness and Fatigue during Highly Automating Driving”

This study investigates sleepiness and fatigue in the context of highly automated driving. It examines the impact of reduced driver engagement on drowsiness levels. The authors discuss the potential risks and propose monitoring solutions to ensure driver readiness to take control when needed. The paper emphasizes the importance of continuous vigilance in automated driving scenarios.

10. Xun-Phng Hynh, “observing of Driver sleepyness using 3D DNN and Semi-Supervised Gradient Boosting Machine”

The introduces using a 3D deep NN combined with gradient boosting machine for driver drowsiness detection. The 3D network captures spatial and temporal features from video data, while the gradient boosting machine enhances detection accuracy. The study demonstrates the effectiveness of combining deep learning and gradient boosting for robust drowsiness detection.

11. A. Georg and A. Routay, ““Real-time Eye Gaze Direction Prediction with Convolutional Neural Networks” Int. Conf. Signal Process. Commun., pp. 1–5, 2016

This work focuses on real-time eye gaze direction classifying using cnn (CNN). The CNN model processes eye images to classify gaze direction accurately. The authors highlight the significance of gaze direction in assessing driver

attention and drowsiness. The paper presents experimental results showing the high CNN-based approach in real-time applications.

III.METHODOLOGY

The methodology for the driver drowsiness detection system is structured into several key stages: data acquisition, pre-processing, feature extraction, drowsiness detection, and alert generation. Each stage leverages specific techniques and libraries to achieve real-time monitoring and detection of driver fatigue.

1. Data Acquisition

The first step involves capturing video input of the driver's face using a camera. The camera is positioned to ensure a clear and unobstructed view of the driver's eyes. This live video feed serves as the primary data input for subsequent processing.

2. Pre-processing

Once the video feed is acquired, each frame is converted from color to grayscale to simplify the processing and reduce computational load. The grayscale frames are subsequently inputted into the facial landmark detection module.

3. Facial Landmark Detection

The Dlib library's pre-trained shape predictor model is utilized to identify facial landmarks within the video frames. Specifically, 68 facial landmarks are detected, with a full interest on the regions around the eyes. This model accurately identifies the coordinates of key points on the facial, which are efficient for further analysis.

4. Feature Extraction

The critical feature for drowsiness detection is the Eye Aspect Ratio (EAR). The EAR is calculated leveraging the coordinates of the eye landmarks. It measures the ratio of distances between specific points on the eyes to determine the degree of eye openness. The formula for EAR is as follows:

$$EAR = (\|P_2 - P_6\| + \|P_3 - P_5\|) / 2 \cdot \|P_1 - P_4\|$$

where (P₁, P₂, P₃, P₄, P₅,) and (P₆) are the coordinates of the eye landmarks.

5. Drowsiness Detection

The EAR is monitored continuously, and its value is compared against a predefined threshold. If the EAR falls below this threshold for a sustained period (e.g., more than 2 seconds), it indicates that the driver's eyes are closed, suggesting drowsiness. This threshold-based method ensures accurate and timely detection of drowsiness.

6. Alert Generation

Upon detecting signs of drowsiness, the system triggers an alert to notify the driver. This alert can be in the form of an audible sound, a visual warning, or a vibration. The prompt alert helps to wake the driver and prevent potential accidents.

7. Implementation and Testing

The system is implemented using Python, leveraging libraries such as OpenCV for video processing and Dlib for facial landmark detection. The efficiency of the system is tested using various video samples to ensure reliability and accuracy in detecting drowsiness.

IV. SYSTEM ARCHITECTURE

The term "system architecture" describes the overall organization of a software system, including all of its constituent parts, their interrelationships, and the architecture and development principles. It acts as a blueprint outlining the functionality, behavior, and communication between different system components as well as those with external systems. In addition to guaranteeing that the system effectively satisfies its functional needs, a clearly specified system architecture also takes non-functional factors like performance, scalability, dependability, and security into account. It

provides a framework for developers to apply certain modules or components, promotes efficient stakeholder communication, and supports further additions and changes.

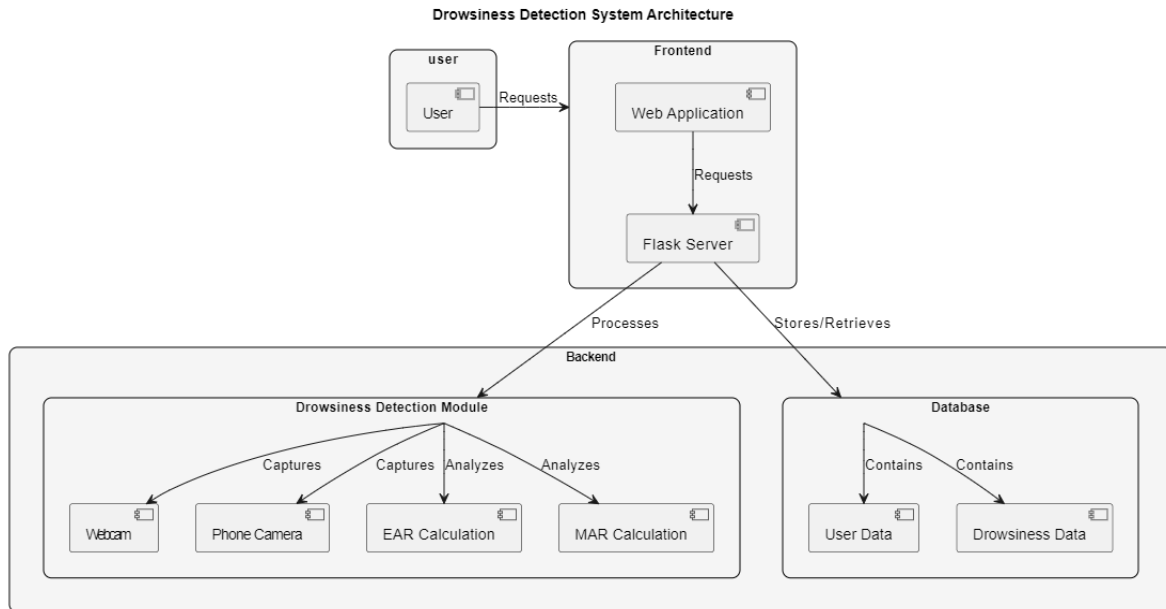
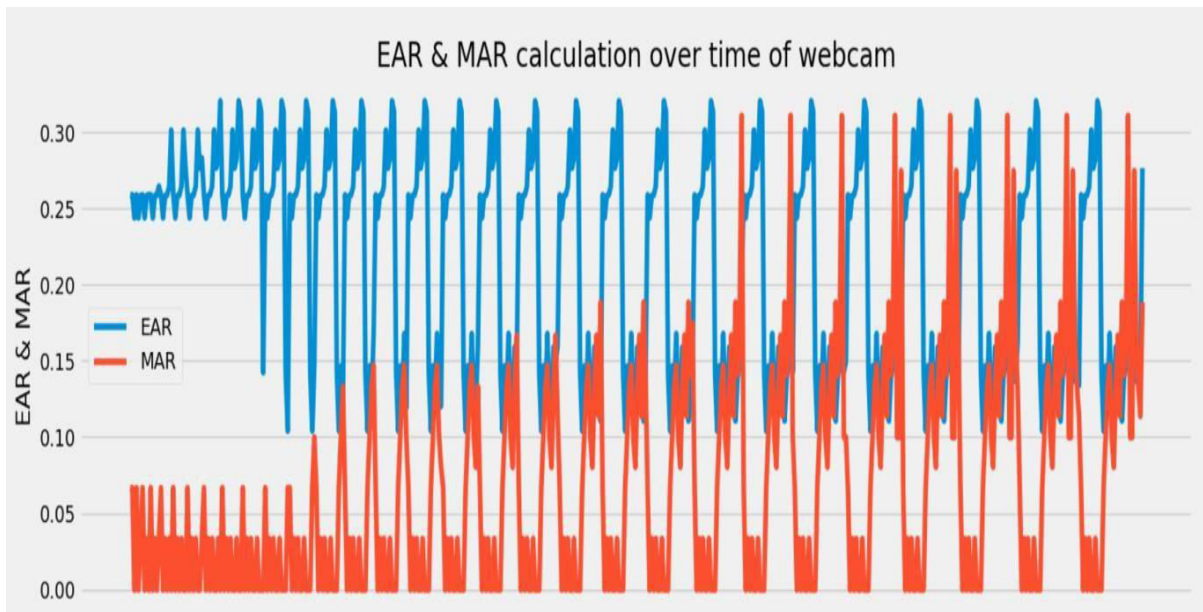


Fig. 1 System architecture

V. RESULT AND DISCUSSION

EAR & MAR Calculations Webcam



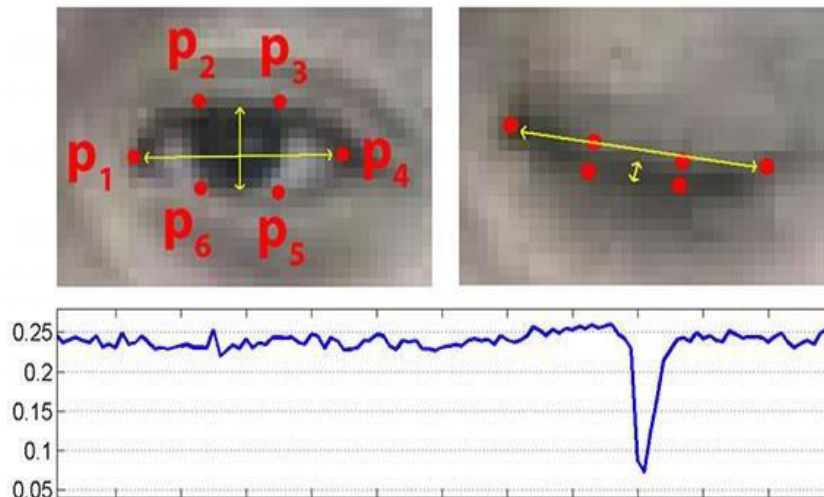


Fig. 2 EAR and MAR calculation over time of webcam

The EAR ratio is the proportion of length and extent of the eyes. The length and extent of the eyes are obtained by averaging the two lines that run horizontally and vertically through the eyes as shown. Our hypothesis was that when a person is tired, their eyes will likely shrink and they will blink more frequently. Based entirely on the basis of this hypothesis, we expected our model to categorize character as tired if their EAR decreased over successive frames, i.e. their eyes began to close or they were blinking faster.

VI.CONCLUSION

Our effort to identify driver tiredness is a major advancement in the use of technology to improve road safety. Through the application of computer vision techniques, particularly the use of Dlib for facial landmark identification and image processing, we were able to create a system that can effectively monitor driver behaviors in real time, including head position and eye closure. These markers are essential for spotting sleepiness early on and preventing accidents that could result from fatigued drivers. We prioritized efficiency and robustness throughout the project to make sure the system functions well in a range of lighting circumstances and driver appearances. We were able to attain dependable performance in the very accurate detection of sleepiness episodes through the integration of these strategies. To sum up, our research highlights the viability and efficiency of employing computer vision to identify driver fatigue. Future improvements can involve investigating new features like driver distraction detection and improving the system's adaptability to a variety of driving conditions. This experiment shows the potential for ongoing innovation in reducing the risks connected with driver weariness on the roads, in addition to making a contribution to the progress of vehicle safety technologies.

REFERENCES

- [1] Kyong He Le, Whi , Hyu Kyu Cho, Byug Te Jag, "Evaluating Feature Extraction Techniques for Assessing Driver Drowsiness Levels"
- [2] Ashi Kumar, Rush Pata, "Driver Drowsiness Detection System Leveraging Visual Behavior and machine Learning Techniques"
- [3] Cyun-Yiii Li, Pau Chag, Ala Wag, Chihhh-Peng Fn, "ML and Gradient "Statistical Approach for Real-Time Driver Drowsiness Monitoring"
- [4] Chig-Ha Weg, Ying-Hsiuu Lai, Shang-hhong Li, "Driver sleepiness observation via a particular Temporal Deep Belief Network"
- [5] Anji Georg, Aurobind Routtra, "'Real-time Eye Gaze Analysis" Classification Using cnn
- [6] MResearch Lab, <http://mrl.cs.vsb.cz/>, 2018

- [7] Venkat Ram Redy Chira, Srinivasul Redy Uyala, Venkat Krishn Kishor Koli, “Deep CNN: A MLearning Approach for sleepiness monitoring of the driver Based on Es”
- [8] Mkusel Ngxand, Jules-Raymond Taamo, Michel Buke, “Driver sleepiness monitoring using Behavioral and ml Techniques: A Review of State-of-Art Techniques”
- [9] . T. Vogelpola, M. Kün, T, M. Vorath, “fallen sleep at the automatic Wheel—Sleepyness and Fatigue during Highly Automating Driving”
- [10] Xun-Phng Hynh, “observing of Driver sleepyness using 3D DNN and Semi-Supervised Gradient Boosting Machine”
- [11] A. Georg and A. Routay, ““Real-time Eye Gaze Direction Prediction with Convolutional Neural Networks” Int. Conf. Signal Process. Commun., pp. 1–5, 2016



INTERNATIONAL
STANDARD
SERIAL
NUMBER
INDIA



INTERNATIONAL JOURNAL OF INNOVATIVE RESEARCH

IN SCIENCE | ENGINEERING | TECHNOLOGY

 9940 572 462  6381 907 438  ijirset@gmail.com



www.ijirset.com

Scan to save the contact details