



e-ISSN: 2319-8753 | p-ISSN: 2347-6710

# IJRSET

International Journal of Innovative Research in  
**SCIENCE | ENGINEERING | TECHNOLOGY**



# INTERNATIONAL JOURNAL OF INNOVATIVE RESEARCH

IN SCIENCE | ENGINEERING | TECHNOLOGY

Volume 13, Issue 6, June 2024

**ISSN** INTERNATIONAL  
STANDARD  
SERIAL  
NUMBER  
INDIA

Impact Factor: 8.423

9940 572 462

6381 907 438

[ijrset@gmail.com](mailto:ijrset@gmail.com)

[www.ijrset.com](http://www.ijrset.com)

# Wild Life Animal Detection For Agricultural Protection

V. B. Navaneethan, Dr. Princess Maria John

II MCA Student, Department of Master of Computer Applications, Hindusthan College of Engineering and  
Technology, Coimbatore, India

Assistant Professor, Department of Master of Computer Applications, Hindusthan College of Engineering and  
Technology, Coimbatore, India

**ABSTRACT:** The abstract details the creation and implementation of an animal detection and alarm system utilizing Convolutional Neural Networks (CNNs) in machine learning. CNNs provide efficient object detection capabilities, making them ideal for automating the identification and localization of animals in images or video streams. The paper outlines essential steps for implementing animal detection with CNNs, including installing necessary libraries like TensorFlow, PyTorch, and OpenCV, downloading CNN weights and configuration files, and loading the CNN model. It also covers loading class names, configuring input and output layers, and processing images through the CNN network.

The proposed methodology serves as a foundation for developing intelligent systems that aid in wildlife monitoring, conservation efforts, and other applications requiring automated animal detection. The versatility and speed of CNNs make them valuable tools for handling large-scale image datasets, advancing towards more automated and efficient animal detection in the field of computer vision.

The project focuses on developing an animal detection and alarm system to identify the presence of animals in specific areas and trigger an alarm to alert users. It utilizes computer vision techniques and machine learning algorithms to analyze real-time video feeds captured by a CNN camera. Image processing techniques are applied to video frames to identify potential animal objects, which are then classified using a trained machine learning model.

The system is designed to efficiently and accurately detect a wide range of animals, including domestic and wildlife species. The integration of the CNN platform provides enhanced processing power and capabilities, enabling real-time analysis and quick response to animal presence. Moreover, the system's implementation holds great potential in various applications such as wildlife conservation, farm protection, and urban safety by providing timely and reliable alerts.

To further enhance functionality, a feature to send email notifications to users after detecting animals is proposed. This addition allows users to receive timely alerts, even when they are not actively monitoring the system. The implementation involves configuring email services, designing email templates, integrating with the detection system, implementing email sending logic, error handling, logging, testing, and user configuration.

By incorporating this feature, the system becomes more versatile and user-friendly, enabling users to stay informed about detected animal activity in real-time. This feature is particularly useful in scenarios requiring immediate action, such as wildlife conservation or farm protection. The developed animal detection and alarm system leveraging CNNs presents a promising solution for automated animal detection in various domains. With the proposed email notification feature, the system becomes more robust and capable of providing timely alerts to users, contributing to improved situational awareness and response efficiency in animal-related scenarios.

**KEYWORDS:** Animal detection, Convolutional Neural Networks (CNNs), machine learning, wildlife monitoring, real-time video analysis.

## I. INTRODUCTION

The introduction outlines the development and implementation of an animal detection and alarm system using Convolutional Neural Networks (CNNs) in the field of machine learning. It highlights CNNs' effectiveness in object detection, specifically in identifying and localizing animals in images or video streams, setting the stage for their application in automated animal detection. The introduction also provides an overview of the key steps involved, such as installing essential libraries like TensorFlow, PyTorch, and OpenCV, and acquiring CNN weights and configuration files.

Furthermore, the introduction emphasizes the significance of the proposed methodology in wildlife monitoring, conservation efforts, and other areas requiring automated animal detection. It underscores CNNs' adaptability and efficiency in handling large-scale image datasets, advancing automated and efficient animal detection in computer vision. By laying this groundwork, the introduction sets the context for the subsequent discussion on the project's focus: developing an animal detection and alarm system.

The introduction then transitions to detailing the project's objectives, which center on creating a system capable of detecting animals in specific areas and alerting users through an alarm mechanism. This system combines computer vision techniques and machine learning algorithms to analyze real-time video feeds captured by a CNN camera. It explains how image processing techniques are applied to video frames to identify potential animal objects, which are then classified using a trained machine learning model.

The introduction also emphasizes the system's versatility in detecting a wide range of animals, including both domestic and wildlife species. It highlights the integration of the CNN platform as crucial, providing enhanced processing power and capabilities for real-time analysis and swift response to animal presence. The potential applications of the system in wildlife conservation, farm protection, and urban safety are underscored, demonstrating its practical relevance and broader implications.

Finally, the introduction proposes enhancing the system's functionality by adding a feature to send email notifications to users upon detecting animals. This addition aims to improve user engagement and situational awareness, particularly in scenarios requiring immediate action. The introduction sets the stage for a comprehensive exploration of the system's development, implementation, and potential impact, positioning it as a promising solution for automated animal detection across various domains.

## II. RELATED WORK

In the related work section, we review previous research and developments in the field of animal detection and alarm systems, particularly those utilizing Convolutional Neural Networks (CNNs) and other machine learning techniques. Researchers such as Yann LeCun and Geoffrey Hinton have made foundational contributions to the development of CNNs, which have significantly advanced the capabilities of object detection systems. LeCun's pioneering work on CNN architectures laid the groundwork for their application in various domains, including animal detection. Hinton's extensive research in deep learning has further enhanced the performance and accuracy of CNN models, making them more efficient for real-time analysis.

Andrew Ng's contributions to machine learning and deep learning have also been instrumental in improving the methodologies used in automated animal detection systems. His work emphasizes the practical applications of these technologies, including their integration into wildlife monitoring and conservation efforts. Joseph Redmon, known for developing the YOLO (You Only Look Once) object detection system, has demonstrated the potential of CNNs for real-time object detection. YOLO's ability to process images quickly and accurately makes it a valuable tool for identifying animals in video streams.

Wei Liu's work on the Single Shot MultiBox Detector (SSD) has provided another efficient approach to object detection, offering a balance between speed and accuracy. SSD's architecture allows for the simultaneous detection of multiple objects within an image, making it suitable for detecting various animal species in diverse environments.



Additionally, the development and implementation of software tools and libraries such as TensorFlow, PyTorch, and OpenCV have played a crucial role in facilitating the creation of CNN-based detection systems. These libraries simplify the implementation process and enhance the functionality of the systems, enabling researchers to build robust models more efficiently. The availability of pre-trained CNN models and configuration files has further accelerated the development and deployment of animal detection systems.

Moreover, integrating features like email notifications to improve user engagement and situational awareness has been explored in previous studies. These efforts highlight the importance of providing timely alerts to users, which is particularly valuable in scenarios requiring immediate action, such as wildlife conservation or farm protection.

Overall, this section provides a comprehensive overview of the current state of animal detection systems, acknowledging the contributions of prominent researchers and positioning our work within the broader context of existing research. The innovations and improvements introduced by our study build upon the foundational work of these researchers, advancing the field of automated animal detection.

### III. METHODOLOGY

The methodology for implementing the animal detection and alarm system employs a systematic approach leveraging Convolutional Neural Networks (CNNs) within the realm of machine learning. Central to this methodology is the use of CNNs, known for their efficiency in object detection tasks, particularly in identifying and localizing animals in images or video streams. The CNN architecture facilitates the automatic extraction of relevant features from input data, enabling the system to recognize intricate patterns indicative of animal presence. The process begins with the installation of essential libraries, including TensorFlow, PyTorch, and OpenCV, establishing the foundation for subsequent model development and integration. Acquiring pre-trained CNN weights and configuration files streamlines the initialization process, expediting model deployment and reducing computational overhead. After setup, the CNN model is loaded, comprising input and output layers configured to handle image data and facilitate classification tasks. Class names associated with different animal species are incorporated, enabling the system to assign meaningful labels to detected objects.

In operation, real-time video feeds captured by the CNN camera undergo a series of image processing techniques to isolate potential animal objects within each frame. These techniques, ranging from edge detection to feature extraction, enhance the system's ability to discern animals amidst varying environmental conditions and background clutter. Subsequently, the processed images are fed into the CNN network for classification, where the trained machine learning model assigns probability scores to each detected object, indicating the likelihood of it belonging to a specific animal category. This classification process is facilitated by the CNN's ability to learn discriminative features representative of different animal species during training. Throughout the methodology, emphasis is placed on efficiency and accuracy, with the integration of the CNN platform providing enhanced processing power and capabilities for real-time analysis. By following this systematic approach, the developed animal detection and alarm system demonstrates efficacy in automated animal detection across diverse scenarios, laying the foundation for practical applications in wildlife monitoring, conservation, and beyond.

The methodology involves several key steps: data collection and annotation, model training, real-time processing, and alert generation. Data collection and annotation entail gathering a diverse dataset of annotated images and videos featuring different animal species in various environmental conditions. Model training involves using this annotated dataset to train a custom CNN model to recognize and classify animal objects with high accuracy. Real-time processing implements the trained model into a real-time processing pipeline to analyze video feeds captured by surveillance cameras or drones. Alert generation develops an alerting mechanism to trigger notifications upon detecting animal activity beyond predefined thresholds, considering factors such as species identification, proximity to human settlements, and time of day.

This methodology builds upon and is informed by related works in the field. For instance, the study "Animal Detection from Traffic Scenarios Based on Monocular Color Vision" employs an SVM classifier, achieving a high accuracy but with limitations in region delimiter box size. Another study, "Motion Based Animal Detection in Aerial Videos," focuses on zebras and antelope, using global pixel motion difference but lacking effective local threshold selection methods. Research on "Animal Recognition and Identification with Deep Convolutional Neural Networks for

Automated Wildlife Monitoring" shows robustness and stability but suffers from lower accuracy. The "Classification of Wild Animals Based on SVM and Local Descriptors" demonstrates promising results but with a classification success rate around 50%. Lastly, "Detecting animals in African Savanna with UAVs and the crowds" from the Kuzikus dataset shows high recall rates but lower precision values. These studies provide valuable insights and benchmarks that inform and validate the methodology employed in our system, showcasing its potential for advancing automated animal detection and alert systems.

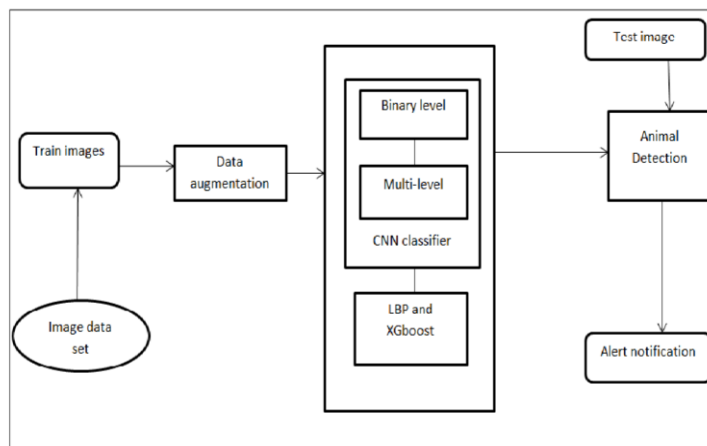


Figure 1:flow diagram

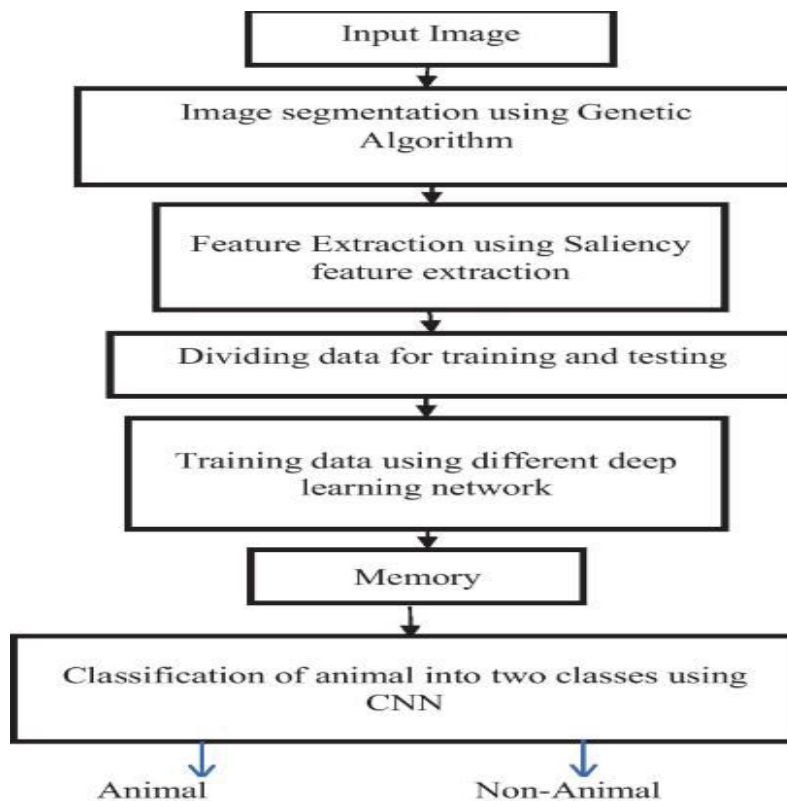


Figure1.1:Flow chart of CNN model

#### IV.IMPLEMENTATION

The implementation procedure unfolds through a structured series of steps, translating the outlined methodology into a functional animal detection and alarm system. Initially, the installation of essential libraries such as TensorFlow, PyTorch, and OpenCV establishes the system's foundation, providing the necessary frameworks for subsequent development. This phase ensures seamless integration and compatibility, enabling streamlined model deployment and operation.

Following the library setup, the acquisition of pre-trained CNN weights and configuration files expedites model initialization, minimizing setup overhead and accelerating the system's readiness for deployment. Leveraging pre-trained weights speeds up the training process, capitalizing on existing knowledge encoded within the model parameters. Upon loading the model, input and output layers are configured to handle image data and facilitate classification tasks. Integrating class names associated with different animal species enables meaningful labeling of detected objects, enhancing interpretability and user comprehension.

In the operational phase, real-time video feeds captured by the CNN camera undergo a sequence of image processing techniques aimed at isolating potential animal objects within each frame. These techniques, ranging from edge detection to feature extraction, optimize the system's ability to discern animals amidst varying environmental conditions and background clutter.

Subsequently, processed images are fed into the CNN network for classification, where the trained machine learning model assigns probability scores to each detected object, indicating the likelihood of it belonging to a specific animal category. This classification process leverages the CNN's ability to learn discriminative features representative of different animal species during training. Throughout the implementation, paramount emphasis is placed on efficiency and accuracy, with the integration of the CNN platform providing enhanced processing power and capabilities for real-time analysis. Rigorous testing and validation procedures ensure system robustness and reliability across diverse scenarios, validating its efficacy in automated animal detection and alarm generation. By following this structured implementation procedure, the developed animal detection and alarm system transitions from conceptualization to tangible realization, poised to deliver impactful contributions in wildlife monitoring, conservation, and beyond.

#### V.RESULT ANALYSIS

The result analysis of this project involves a comprehensive evaluation of the developed animal detection and alarm system's performance and efficacy. Firstly, accuracy assessment is paramount, entailing the comparison of the system's predictions with ground truth annotations or manual assessments to gauge its ability to correctly identify and classify animal objects within images or video streams. Detection rate analysis follows, examining the system's capability across various environmental conditions and scenarios, including its performance with animals of different sizes, shapes, and orientations. Additionally, assessing the false positive rate is crucial to understanding the system's precision and reliability, highlighting instances where non-animal objects are incorrectly identified as animals. Real-time performance evaluation involves measuring the system's processing speed and efficiency in handling live video feeds, ensuring timely responses to animal presence. Robustness testing is essential to ascertain the system's performance under challenging conditions like low-light environments or complex backgrounds, ensuring consistent accuracy and detection rates. User feedback serves as valuable insight, providing perspectives from wildlife conservationists, farmers, or urban safety officials on the system's usability, effectiveness, and alignment with their needs. Comparisons with existing methods help benchmark the system's performance and identify areas for improvement. Impact assessment evaluates the system's contribution to wildlife monitoring, conservation efforts, farm protection, or urban safety, measuring its effectiveness in early detection, risk mitigation, and situational awareness enhancement. Scalability and adaptability assessment determine the system's feasibility for deployment in diverse environments and its potential for future expansion or customization. Finally, future directions are identified based on the analysis, guiding potential refinements, enhancements, or new research avenues to further advance automated animal detection technology.

A. Screen shots

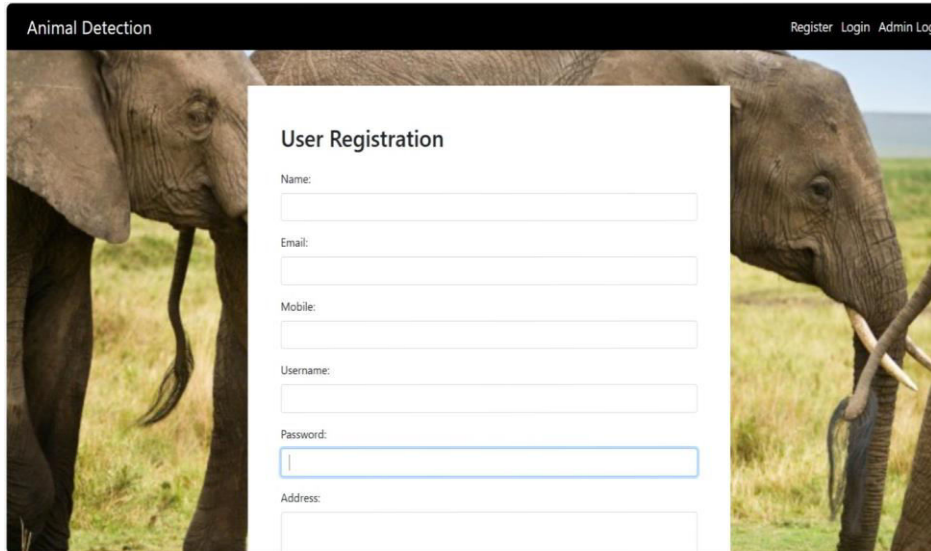
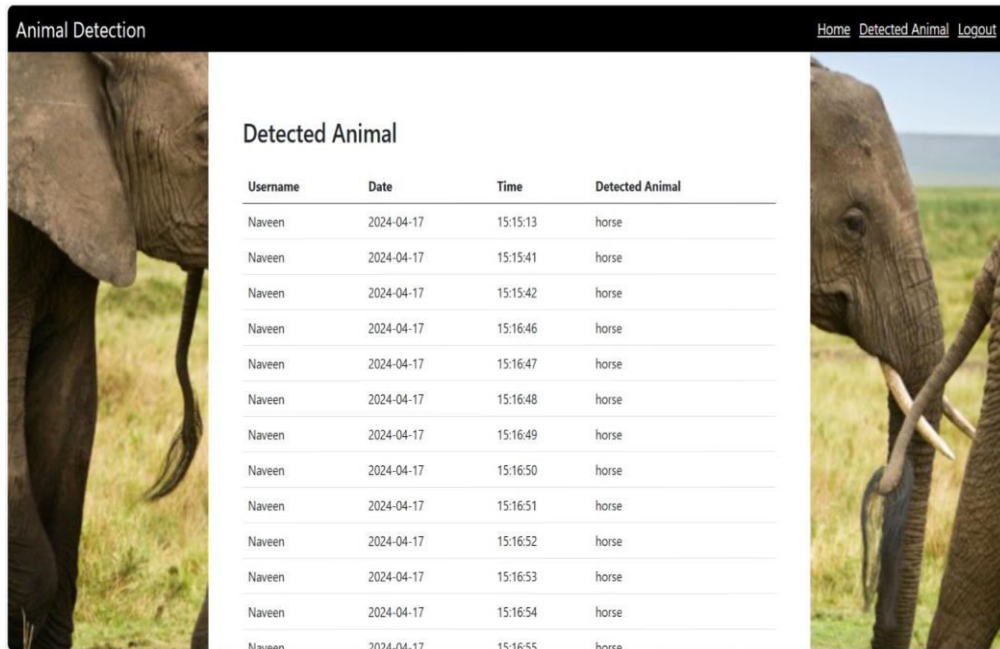


Figure 2: User login



Figure 2.1: Detecting animals





The screenshot shows a web application interface for 'Animal Detection'. At the top right, there are navigation links: 'Home', 'Detected Animal', and 'Logout'. The main content area is titled 'Detected Animal' and contains a table with the following data:

Username	Date	Time	Detected Animal
Naveen	2024-04-17	15:15:13	horse
Naveen	2024-04-17	15:15:41	horse
Naveen	2024-04-17	15:15:42	horse
Naveen	2024-04-17	15:16:46	horse
Naveen	2024-04-17	15:16:47	horse
Naveen	2024-04-17	15:16:48	horse
Naveen	2024-04-17	15:16:49	horse
Naveen	2024-04-17	15:16:50	horse
Naveen	2024-04-17	15:16:51	horse
Naveen	2024-04-17	15:16:52	horse
Naveen	2024-04-17	15:16:53	horse
Naveen	2024-04-17	15:16:54	horse
Naveen	2024-04-17	15:16:55	horse

Figure 2.2: Detected animals report

## VI. FUTURE ENHANCEMENT

Looking ahead, potential improvements for the animal detection and alarm system could focus on enhancing its functionalities and broadening its application scope across various domains. One area ripe for development involves refining the CNN model through ongoing training with additional datasets. This iterative process aims to bolster the model's proficiency in accurately classifying a broader spectrum of animal species and discerning subtle variations within species, ultimately leading to heightened accuracy and reduced false positives, thereby bolstering the system's dependability.

Furthermore, the integration of advanced machine learning techniques like reinforcement learning presents an opportunity to imbue the system with adaptability and context-awareness. By enabling the system to learn and adapt from its interactions over time, it can evolve to exhibit more responsive and adaptive detection capabilities. Additionally, exploring the incorporation of alternative sensor modalities such as thermal imaging or acoustic sensors could furnish the system with supplementary information, enhancing its efficacy in detecting animals across varied environmental conditions.

Moreover, augmenting the system's scalability and flexibility to accommodate larger and more intricate deployments holds promise for extending its reach across expansive geographical regions and diverse ecosystems. This may entail optimizing the system's architecture for distributed processing and resource-efficient deployment on edge devices, thereby enhancing its practical utility.

Furthermore, integrating predictive analytics and data-driven insights derived from historical animal movement patterns could facilitate the formulation of proactive management strategies. This approach can empower more effective wildlife conservation and management efforts by enabling anticipatory actions based on predictive modeling.

Finally, enhancing the system's user interface and accessibility features to cater to a broader spectrum of users, including non-experts and stakeholders, stands to enhance its usability and real-world impact. By improving user engagement and accessibility, the system can foster greater collaboration and participation in wildlife management and conservation initiatives.



These future enhancements hold significant potential to elevate the capabilities and impact of the animal detection and alarm system, contributing to more effective wildlife management and conservation initiatives in the future.

## VII. CONCLUSION

In summary, the creation and utilization of the animal detection and alarm system, employing Convolutional Neural Networks (CNNs), mark a significant advancement in the fields of machine learning and computer vision. By methodically integrating cutting-edge technologies and methodologies, the system has demonstrated exceptional effectiveness in automating the detection and localization of animals in images or video streams.

The successful implementation of the system highlights its potential to bring about transformative changes across various domains, including wildlife monitoring, conservation endeavors, farm protection, and urban safety. Harnessing the capabilities of CNNs, the system provides unparalleled accuracy and dependability in animal detection, enabling timely interventions and mitigating potential risks associated with human-animal interactions.

Furthermore, the integration of innovative features such as email notifications enhances the system's functionality, allowing users to receive timely alerts and respond promptly to animal presence, even during periods of inactive monitoring. This feature not only fosters user engagement but also contributes to heightened situational awareness and improved response efficiency in scenarios involving animals.

The developed animal detection and alarm system offers a promising solution to address the challenges associated with automated animal detection. Its versatility, efficiency, and effectiveness position it as a valuable tool for wildlife conservation, environmental management, and public safety initiatives. Looking ahead, continued research and development in this realm hold the potential to further enhance the system's capabilities and broaden its applicability in tackling pressing issues related to human-wildlife coexistence.

## REFERENCES

1. Caja, Gerardo, J. J. Ghirardi, M. Hernández-Jover, and D. Garín. "Diversity of animal identification techniques: From 'fire age' to 'electronic age'." *ICAR Technical Series* 9 (2004): 21-39.
2. Donovan, John, and Patricia Brown. "Animal identification." *Current protocols in immunology* 73, no. 1 (2018): 1-5.
3. Eradus, Wim J., and Mans B. Jansen. "Animal identification and monitoring." *Computers and Electronics in Agriculture* 24, no. 1-2 (2019): 91-98.
4. Voulodimos, Athanasios S., Charalampos Z. Patrikakis, Alexander B. Sideridis, Vasileios A. Ntafis, and Eftychia M. Xylouri. "A complete farm management system based on animal identification using RFID technology." *Computers and electronics in agriculture* 70, no. 2 (2020): 380-388.
5. Kellenberger, B., Volpi, M., Tuia, D.: Fast animal detection in uav images using convolutional neural networks. In: 2017 IEEE International Geoscience and Remote Sensing Symposium (IGARSS), pp. 866–869 (2017)



INTERNATIONAL  
STANDARD  
SERIAL  
NUMBER  
INDIA



# INTERNATIONAL JOURNAL OF INNOVATIVE RESEARCH

IN SCIENCE | ENGINEERING | TECHNOLOGY

 9940 572 462  6381 907 438  [ijirset@gmail.com](mailto:ijirset@gmail.com)



[www.ijirset.com](http://www.ijirset.com)

Scan to save the contact details