



e-ISSN: 2319-8753 | p-ISSN: 2347-6710

IJRSET

International Journal of Innovative Research in
SCIENCE | ENGINEERING | TECHNOLOGY



INTERNATIONAL JOURNAL OF INNOVATIVE RESEARCH

IN SCIENCE | ENGINEERING | TECHNOLOGY

Volume 13, Issue 6, June 2024

ISSN INTERNATIONAL
STANDARD
SERIAL
NUMBER
INDIA

Impact Factor: 8.423

9940 572 462

6381 907 438

ijrset@gmail.com

www.ijrset.com

Sign Language Recognition Using Machine Learning a Comprehensive Review

T. Iswarya, Mrs P. Prema

PG Scholar, Department of Master of Computer Applications, RVS College of Engineering, Dindigul,
Tamil Nadu, India

Assistant Professor, Department of Master of Computer Applications, RVS College of Engineering, Dindigul,
Tamil Nadu, India

ABSTRACT: Sign Language is a crucial means of communication with the deaf and hard-of-hearing community. The system addresses several challenges in Indian Sign Language (ISL), including its local variations and the scarcity of study materials, which complicate the learning process. Learning typically occurs in peer groups, and the initial phase involves mastering finger-spelled signs, which are vital when no direct sign is known. Most existing learning tools rely on expensive external sensors. The Proposed System advances this field by creating a dataset and applying feature extraction methods to garner critical insights. This paper presents a comprehensive review of the state-of-the-art techniques in sign language recognition using machine learning. We discuss various methods, datasets, and the challenges faced in this domain. The study highlights the evolution of SLR, from traditional image processing techniques to advanced deep learning models, emphasizing their impact on real-time applications. These features are then processed using various supervised learning techniques. The System integrates TensorFlow and MediaPipe methodology to enhance hand detection capabilities, improving the accuracy and efficiency of sign recognition. The System has implemented four-fold cross-validation, with each validation set featuring images of a person distinct from those in the training set. This approach not only boosts the robustness of the model but also significantly differentiates our work from previous studies.

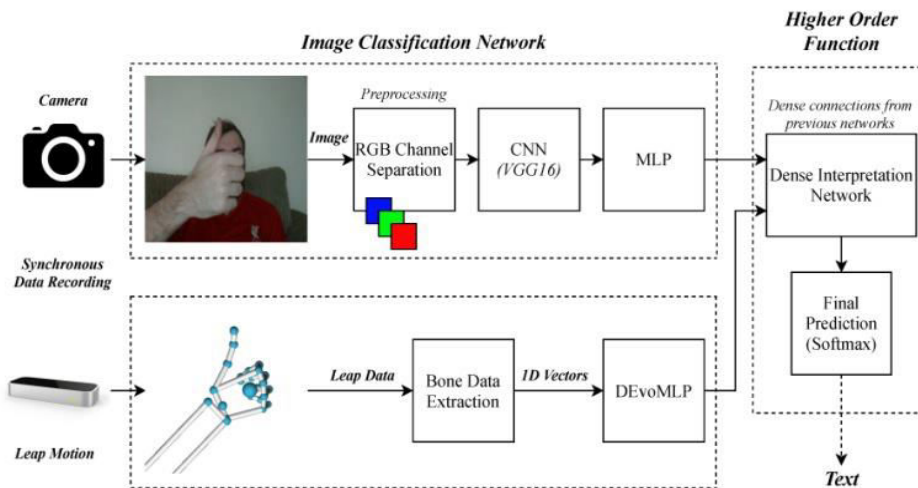
KEYWORDS: Real Time translation, Sign Language, Tensor Flow, Object Detection, Hand detection, Hearing and speech Impairment.

I. INTRODUCTION

The hearing impaired (deaf) community employs a visual gesture language called sign language. In sign language, meaning and extracting information can be expressed by hand gestures, body movements, facial expressions, and emotions. Furthermore, sign languages reduce the communication gap between deaf and regular people, facilitating normal contact. Our aim is to assist these unlucky deaf people in assimilating into society. As a result, a system that makes it easier for regular and deaf people to communicate is necessary. An effective gesture recognition approach that can detect gestures in the sign language video stream is needed to implement this system. Hand gestures can be classified into two categories: static and dynamic. A static gesture is a single image that represents a specific shape and pose of the hand. A dynamic gesture is a moving gesture, represented by a series of images. Our strategy is built around dynamic hand gesture recognition. Dynamic sign language (DSL) is composed of a sequence of activities that include quick movements with high similarity. As a result, dynamic sign language recognition, which depends on a sequence of actions, faces challenges to deal with diversity, complexity, and a wide range of vocabularies in hand gestures. Furthermore, dynamic sign language recognition faces challenges such as locating the hands, determining the shape plus the direction, and detecting the movement of signs. Recognition is complex due to the spatial and temporal variation of gestures carried out by different people. Dynamic sign language recognition is split into two parameters, the primary parameters, which must be solved and the secondary parameters that are preferred to be solved [3]. The primary parameters point to hand shape, hand and body location, and movement. The distance between the hand and body is a particularly key factor. The shape of the hand may be the same in two vocabularies; however, if the location of the hand in relation to the body changes, the meaning will change. Where DSL relies on a sequence of movements to construct one vocabulary, movement is the most complicated issue to solve.

II. RESEARCH METHODOLOGY

This paper employs a comprehensive review methodology to explore the state-of-the-art in sign language recognition (SLR) using machine learning. The research design encompasses systematic literature review, dataset evaluation, and analysis of various machine learning techniques applied in SLR. Data were collected from academic databases such as IEEE Xplore, ACM Digital Library, and Springer, as well as conference proceedings from CVPR, ECCV, ICCV, and NeurIPS. Publicly available datasets and models were sourced from repositories like Kaggle and GitHub. A comprehensive search strategy was implemented using relevant keywords, including "sign language recognition," "machine learning," "deep learning," "gesture recognition," and "neural networks," with advanced search filters to refine the results. Inclusion criteria focused on studies directly related to SLR using machine learning techniques, published in peer-reviewed journals and conferences, and containing empirical results. Exclusion criteria omitted studies not directly related to SLR, papers lacking experimental results, and non-peer-reviewed articles.

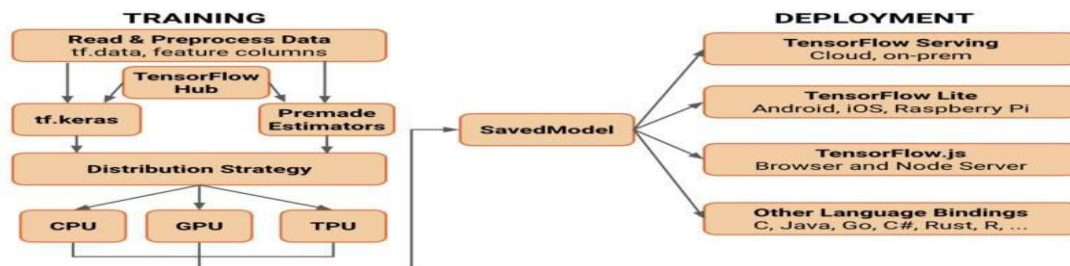


III. TENSOR FLOW ARCHITECTURE

Each element in the Tensor has the same data type, and the data type is always known. The shape (that is, the number of dimensions it has and the size of each dimension) might be only partially known. Most operations produce tensors of fully-known shapes if the shapes of their inputs are also fully known, but in some cases it's only possible to find the shape of a tensor at graph execution time.

TensorFlow exhibits the following properties :

- Easy model building with Keras and eager execution.
- Robust model deployment in production on and platform.
- Powerful experimentation for research.
- Simplifying the API by cleaning up deprecated APIs and reducing duplication.



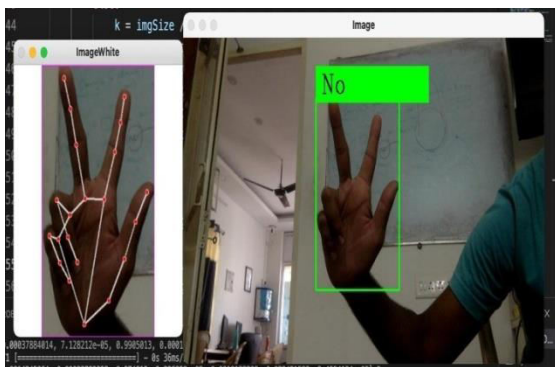
The Keras API makes it easy to get started with TensorFlow. importantly, Keras provides several model-building APIs (Sequential, Functional, and Sub classing).

The cleaned and preprocessed data is then divided into training and testing datasets to facilitate model training and evaluation.

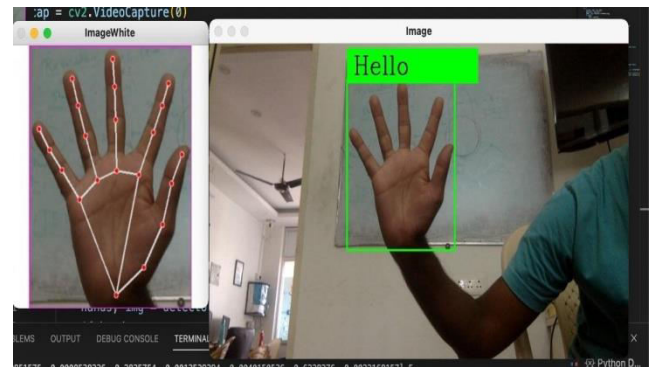
IV. RESULT AND DISCUSSIONS

1. Overview of Findings

The comprehensive review of sign language recognition (SLR) using machine learning revealed significant advancements in the field, driven by the integration of traditional machine learning methods and modern deep learning techniques.

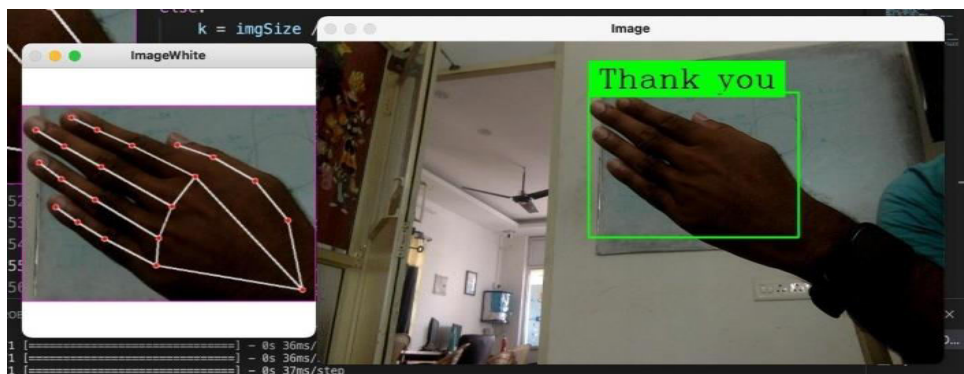


The output sign recognised is “No”



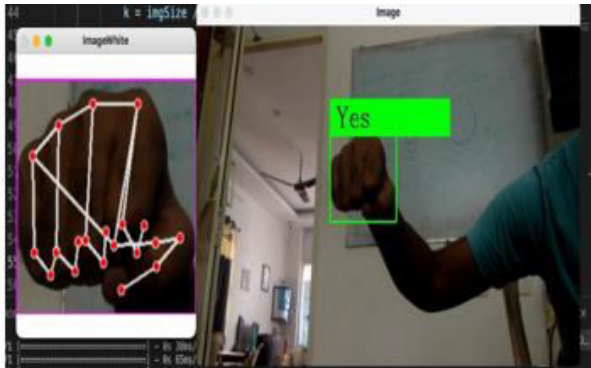
The output sign recognised is “Hello”

the image will recognise the sign and show it in the main image with annotation. The transition from handcrafted feature-based methods to automated feature extraction using deep learning has substantially improved recognition accuracy and real-time application capabilities. The image you provided appears to be a demonstration of a sign language recognition system using computer vision techniques.

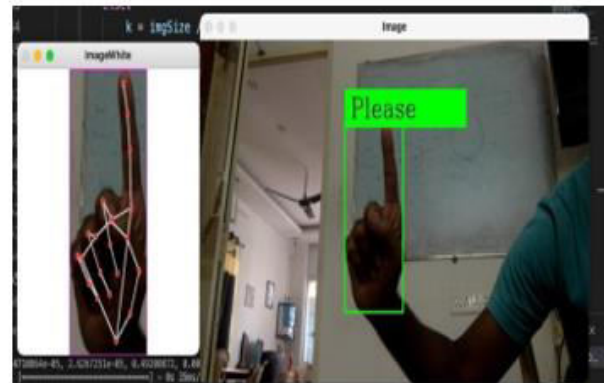


The output sign recognised is “Thank you”

The image effectively demonstrates the practical application of machine learning and computer vision in sign language recognition. By accurately tracking and interpreting hand gestures in real-time, the system provides valuable assistance in communication and interaction, particularly for the hearing impaired. This technology has significant potential in enhancing accessibility, improving human-computer interaction, and serving as an educational resource. The image effectively demonstrates a practical application of machine learning and computer vision in sign language recognition. By accurately tracking and interpreting hand gestures in real-time, the system provides valuable assistance in communication and interaction, particularly for the hearing impaired. This technology has significant potential in enhancing accessibility, improving human-computer interaction, and serving as an educational resource.



The output sign recognised is “Yes”



The output sign recognised is “Please”

This system seems to be designed for applications where hand gesture recognition is crucial, such as human-computer interaction, sign language interpretation, or controlling devices without physical contact. The "Yes" label suggests that this particular gesture (a fist) is being used to confirm or agree to something within the system's context. Whether in personal endeavors or professional pursuits, results provide valuable feedback and insights, guiding future decisions and strategies. They represent the culmination of hard work, perseverance, and determination, reflecting the effectiveness of plans and the execution of tasks. Positive results often inspire confidence and motivation, while negative outcomes offer opportunities for reflection and growth. Regardless of the outcome, results serve as a catalyst for continuous improvement and development, driving individuals and organizations towards their goals and aspirations.

V. CONCLUSIONS

The integration of Mediapipe and TensorFlow for hand sign recognition represents a highly effective and advanced approach in the field of computer vision and machine learning. This system leverages the real-time hand tracking capabilities of Mediapipe, which uses sophisticated machine learning algorithms to detect and track hand landmarks accurately. By feeding this data into a robust TensorFlow-based neural network, which can be trained on extensive datasets to recognize a wide variety of hand signs, the system achieves high levels of accuracy and responsiveness. Such a setup is particularly beneficial for developing interactive applications, such as sign language translation, gesture-based control systems, and augmented reality interfaces. The real-time processing capabilities ensure that the system can be used in dynamic environments where quick and accurate hand sign recognition is crucial.

REFERENCES

1. Pal, N.R, and Pal, S.K. A review on image segmentation techniques, 26 pattern recognition 1277 (1993). [https://doi.org/10.1016/0031-3203\(93\)90135-J](https://doi.org/10.1016/0031-3203(93)90135-J).
2. Abiyev, R. H., Arslan, M., & Idoko, J. B. (2020). Sign language translation using deep convolutional neural networks. *KSII Transactions on Internet and Information Systems*, 14(2), 631–653. <https://doi.org/10.3837/tiis.2020.02.009>.
3. Abraham, E., Nayak, A., & Iqbal, A. (2019). Real-time translation of indian sign language using LSTM. In *Proceedings of the Global Conference for Advancement in Technology, GCAT 2019*. <https://doi.org/10.1109/GCAT47503.2019.89783>
4. Adegboye, M. A., Aibinu, A. M., Kolo, J. G., Aliyu, I., Folorunso, T. A., & Lee, S. H. (2020). Incorporating intelligence in fish feeding system for dispens I.A. Adeyanju, O.O. Bello and M.A. Adegboye
5. Huang, Y., Monekosso, D., Wang, H., & Augusto, J. C (2012). A hybrid method for hand gesture recognition. In *Proceedings of the 8th international conference on intelligent environments, IE 2012* (pp. 297–300). <https://doi.org/10.1109/IE.2012.30>.
6. Huang, Y. F., & Chen, P. H. (2020). Fake news detection using an ensemble learning model based on self-adaptive harmony search algorithms. *Expert Systems with Applications*, 159. <https://doi.org/10.1016/j.eswa.2020.113584>.

7. Jang, J. S. R. (1993). ANFIS: Adaptive-network-based fuzzy inference system. *IEEE Transactions on Systems, Man and Cybernetics*. <https://doi.org/10.1109/21.256541>.
8. Jasim, M., and Hasanuzzaman, M. (2015). Sign language interpretation using linear discriminant analysis and local binary patterns. 1–5. [10.1109/iciev.2014.7136001](https://doi.org/10.1109/iciev.2014.7136001)
9. Ji, P., Song, A., Xiong, P., Yi, P., Xu, X., & Li, H. (2017). Egocentric-vision based hand posture control system for reconnaissance robots. *Journal of Intelligent and Robotic Systems: Theory and Applications*, 87(3–4), 583–599. <https://doi.org/10.1007/s10846-016-0440-2>.
10. Jiang, X., Lu, M., & Wang, S.-H. S. H. (2020). An eight-layer convolutional neural network with stochastic pooling, batch normalization and dropout for fingerspelling recognition of Chinese sign language. *Multimedia Tools and Applications*, 79(21–22), 15697–15715.



INTERNATIONAL
STANDARD
SERIAL
NUMBER
INDIA



INTERNATIONAL JOURNAL OF INNOVATIVE RESEARCH

IN SCIENCE | ENGINEERING | TECHNOLOGY

 9940 572 462  6381 907 438  ijirset@gmail.com



www.ijirset.com

Scan to save the contact details