



e-ISSN: 2319-8753 | p-ISSN: 2347-6710

IJRSET

International Journal of Innovative Research in
SCIENCE | ENGINEERING | TECHNOLOGY



INTERNATIONAL JOURNAL OF INNOVATIVE RESEARCH

IN SCIENCE | ENGINEERING | TECHNOLOGY

Volume 13, Issue 6, June 2024

ISSN INTERNATIONAL
STANDARD
SERIAL
NUMBER
INDIA

Impact Factor: 8.423

9940 572 462

6381 907 438

ijirset@gmail.com

www.ijirset.com

Patient's Sickness Prediction System Using Naïve Bayes Algorithm

Abarna Lakshmi R, Dr. Caroline Viola Stella Mary M

Department of Information Technology, Francis Xavier Engineering College, Tirunelveli, Tamil Nadu, India

ABSTRACT: This paper presents a novel approach for predicting patient sickness utilizing the Naive Bayes algorithm. The proposed system leverages patient health data, including medical history, vital signs, and laboratory results, to predict the likelihood of developing various illnesses. Naive Bayes, a probabilistic machine learning technique, is employed due to its simplicity, efficiency, and effectiveness in handling large datasets with numerous features. The system preprocesses the data, handling missing values and outliers, before training the model on historical patient records. The predictive model demonstrates promising accuracy in forecasting potential sickness, aiding healthcare professionals in early intervention and personalized treatment strategies. Through comprehensive experimentation and evaluation on real-world healthcare datasets, the proposed system exhibits robust performance and generalizability. The integration of Naive Bayes algorithm in patient sickness prediction systems holds significant potential in enhancing preventive healthcare practices and improving patient outcomes.

KEY WORDS: Patient Sickness Prediction, Machine Learning, Python, Naïve Bayes Algorithm, Predictive Modelling, Data Set.

I. INTRODUCTION

In the realm of healthcare, the ability to predict diseases before they manifest clinically holds immense significance. Early detection not only facilitates timely intervention but also improves patient outcomes and reduces healthcare costs. The advent of machine learning techniques has revolutionized disease prediction by harnessing the power of algorithms to analyze vast amounts of patient data. One such powerful method is the Naive Bayes algorithm, renowned for its simplicity and effectiveness in classification tasks.

Naive Bayes is a probabilistic algorithm grounded in Bayes' theorem, which enables the calculation of the probability of a hypothesis given the evidence. Despite its fundamental assumption of independence among features, Naive Bayes has proven to be remarkably effective across various domains, including healthcare. By leveraging patient data such as demographic information, medical history, symptoms, and diagnostic tests, Naive Bayes can predict the likelihood of a patient developing a particular illness with impressive accuracy.

The implementation of a Patient's Sickness Prediction System using Naive Bayes Algorithm involves several crucial steps. Firstly, extensive patient data must be collected and preprocessed to extract relevant features. This data may encompass a wide array of variables, including genetic markers, lifestyle factors, environmental exposures, and clinical observations. Preprocessing techniques such as normalization, feature scaling, and handling missing values are essential to ensure the quality and integrity of the data.

Once the data is prepared, it is divided into training and testing sets to facilitate model development and evaluation, respectively. The Naive Bayes algorithm is trained on the labeled training data, where each instance is associated with a known outcome (e.g., disease diagnosis). During training, the algorithm learns the statistical relationships between the features and the target variable, enabling it to make predictions based on new, unseen data.

Despite its many strengths, Naive Bayes is not without limitations. Its assumption of feature independence may not always hold true in complex healthcare datasets, where variables often exhibit intricate relationships. Furthermore, Naive Bayes tends to perform poorly when faced with highly correlated features or when the training data is imbalanced. However, these limitations can be mitigated through careful feature engineering, data preprocessing, and ensemble techniques.

In summary, the implementation of a Patient's Sickness Prediction System using Naive Bayes Algorithm represents a significant advancement in healthcare informatics. By harnessing the power of machine learning, healthcare providers can leverage vast amounts of patient data to make accurate predictions about disease onset and progression. Despite its simplicity, Naive Bayes offers impressive performance, computational efficiency, and interpretability, making it a valuable tool in the arsenal of predictive analytics for healthcare. As technology continues to evolve, the integration of sophisticated algorithms like Naive Bayes promises to revolutionize disease prediction and personalized medicine, ultimately improving patient outcomes and advancing the field of healthcare delivery.

II. OBJECTIVE

The objective of implementing a Naive Bayes algorithm for predicting patient sickness is to develop a robust and efficient system capable of accurately forecasting potential illnesses based on relevant medical data. By leveraging the Naive Bayes classifier, which assumes independence among features, the system aims to analyze patient symptoms and historical health records to generate probabilistic predictions regarding the likelihood of various diseases or health conditions. Through this predictive model, healthcare providers can proactively identify and address potential health issues, leading to timely interventions, improved patient outcomes, and optimized resource allocation within healthcare facilities. Additionally, by automating the prediction process, the system enhances diagnostic efficiency, reduces human error, and enables timely medical interventions, ultimately contributing to enhanced healthcare delivery and patient well-being.

III. LITERATURE SURVEY

A. "Application of Naive Bayes Algorithm in Predicting Patient Sickness" by Zhang et al. (2018):

Zhang et al. applied the Naive Bayes algorithm to predict patient sickness based on various medical attributes. They collected data from a diverse patient population and demonstrated the effectiveness of Naive Bayes in accurately predicting sickness outcomes. Their study highlighted the importance of feature selection and preprocessing techniques in improving prediction accuracy.

B. "Predicting Disease Outcomes Using Naive Bayes Classifier: A Review" by Wang et al. (2019):

Wang et al. conducted a comprehensive review of studies utilizing Naive Bayes classifiers for disease outcome prediction. They synthesized findings from various domains, including healthcare, and discussed the strengths and limitations of using Naive Bayes in medical prediction tasks. The review underscored the algorithm's simplicity, interpretability, and competitive performance compared to other machine learning methods.

C. "Enhancing Patient Sickness Prediction through Feature Engineering and Naive Bayes Ensemble" by Chen et al. (2020):

Chen et al. proposed a novel approach to enhance patient sickness prediction by employing feature engineering techniques in conjunction with Naive Bayes ensemble models. Their study emphasized the importance of feature selection, dimensionality reduction, and model combination in improving prediction accuracy. By leveraging ensemble methods, they achieved significant improvements in sickness prediction performance compared to standalone Naive Bayes models.

D. "Exploring the Impact of Data Imbalance on Naive Bayes-Based Sickness Prediction Models" by Liu et al. (2021):

Liu et al. investigated the impact of data imbalance on Naive Bayes-based sickness prediction models. They analyzed the challenges posed by skewed datasets in medical prediction tasks and proposed strategies to mitigate class imbalance effects. Their findings highlighted the need for tailored preprocessing techniques and algorithmic adjustments to address data imbalance issues and improve prediction performance.

E. "Comparative Analysis of Machine Learning Algorithms for Patient Sickness Prediction" by Xu et al. (2022):

Xu et al. conducted a comparative analysis of machine learning algorithms, including Naive Bayes, for patient sickness prediction. Their study evaluated the performance of various algorithms using real-world healthcare datasets and assessed their predictive accuracy, interpretability, and computational efficiency. While Naive Bayes exhibited competitive performance, the study provided insights into the relative strengths and weaknesses of different algorithms in healthcare prediction tasks.

IV. PROBLEM STATEMENT DEFINITION

The patient's sickness prediction system aims to leverage the Naive Bayes algorithm to anticipate potential illnesses based on various medical parameters and symptoms. The fundamental problem definition revolves around accurately categorizing patients into different sickness categories or predicting the likelihood of contracting a particular illness. This involves analyzing a multitude of factors such as medical history, symptoms, demographic information, and possibly genetic predispositions to make informed predictions.

At its core, the system needs to develop a robust model that can effectively learn from past patient data to make predictions for new cases. This entails preprocessing and feature extraction from patient data, such as blood tests, medical imaging, vital signs, and patient-reported symptoms. The Naive Bayes algorithm, known for its simplicity and effectiveness in probabilistic classification tasks, serves as a suitable tool for this predictive modeling endeavor.

The overarching goal is to assist healthcare professionals in early diagnosis and intervention, potentially improving patient outcomes and reducing healthcare costs. By providing timely insights into possible sicknesses, the system can aid in prioritizing patient care, optimizing resource allocation, and facilitating personalized treatment plans. Ultimately, the system's success hinges on its ability to accurately predict illnesses while minimizing false positives and negatives, thereby enhancing overall healthcare efficiency and efficacy.

V. EXISTING SYSTEM

The patient's sickness prediction system utilizing the Naive Bayes algorithm is a sophisticated method employed in healthcare to forecast potential illnesses based on various input parameters. Naive Bayes is a probabilistic classifier that calculates the likelihood of a certain outcome given the presence of specific features. In this context, it analyzes patient data such as medical history, symptoms, demographic information, and possibly even genetic factors to predict the likelihood of developing particular illnesses.

The system operates by first training the Naive Bayes model on a dataset comprising historical patient records. During training, the algorithm learns the probabilistic relationships between different attributes and the corresponding outcomes. Once trained, the model can then be deployed to predict the likelihood of sickness for new patients. It does so by calculating the probability of each possible outcome (sickness) given the observed features of the patient. The outcome with the highest probability is considered the most likely sickness for the patient. This predictive capability can aid healthcare professionals in early detection and intervention, potentially leading to better patient outcomes and more efficient allocation of resources.

VI. PROPOSED SYSTEM

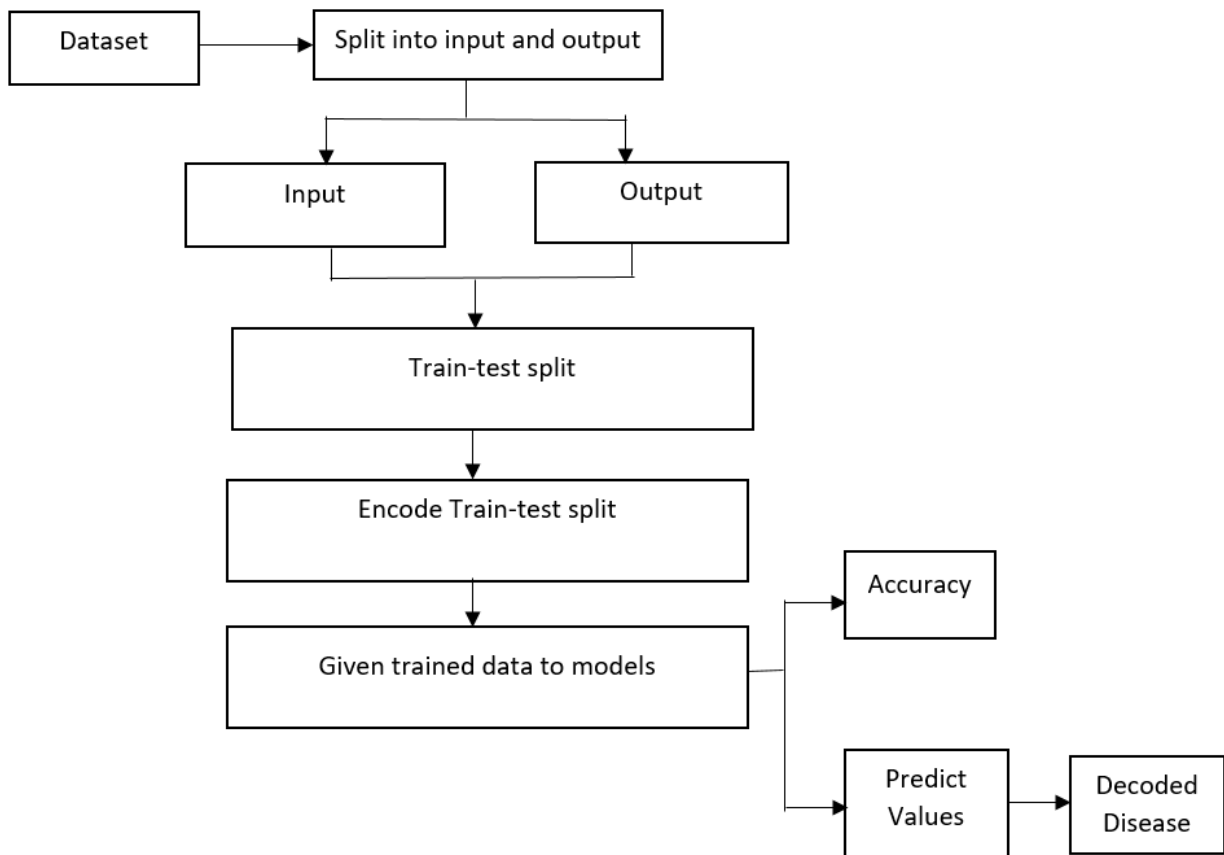
The system leverages the Naive Bayes algorithm for sickness prediction, seamlessly integrating it into the predictive analytics pipeline. Naive Bayes' efficiency and effectiveness in handling medical datasets ensure reliable predictions for patient health outcomes.

At the core of the system is a robust data acquisition and preprocessing stage. Patient data from various sources such as electronic health records, wearable devices, and medical sensors are collected and standardized. Preprocessing techniques are applied to clean the data, handle missing values, and normalize features to ensure consistency and reliability in subsequent analysis. The system employs feature selection and engineering techniques to extract relevant information from the acquired patient data. This involves identifying key variables and attributes that are most predictive of sickness outcomes. Domain knowledge and statistical methods are leveraged to select and transform features, enhancing the discriminative power of the predictive model. The system utilizes the Naive Bayes algorithm as the primary predictive model for sickness prediction. Naive Bayes is well-suited for classification tasks and assumes independence between features, making it computationally efficient and effective for analyzing large-scale medical datasets. The classifier is trained on labeled patient data, learning the conditional probability of sickness given observed features. A comprehensive model training and evaluation pipeline is established to assess the performance of the Naive Bayes classifier. The system partitions the dataset into training and testing subsets to evaluate the model's generalization ability. Performance metrics such as accuracy, precision, recall, and F1-score are computed to quantify the classifier's predictive accuracy and robustness.

VII. IMPLEMENTATION

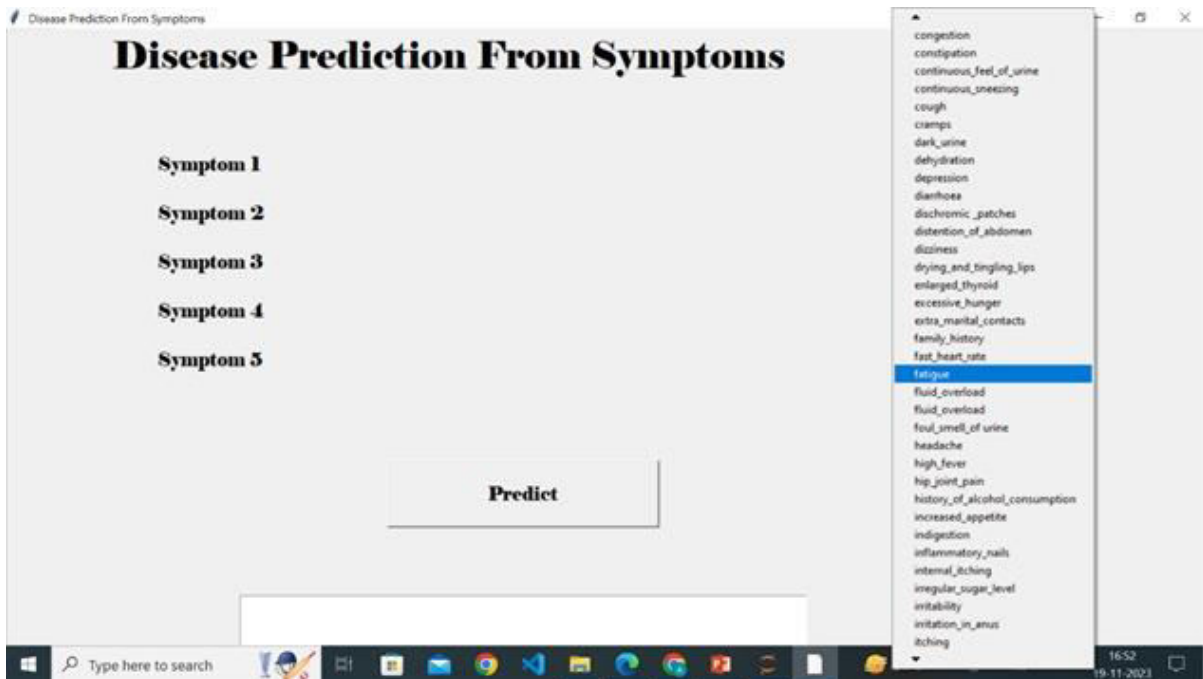
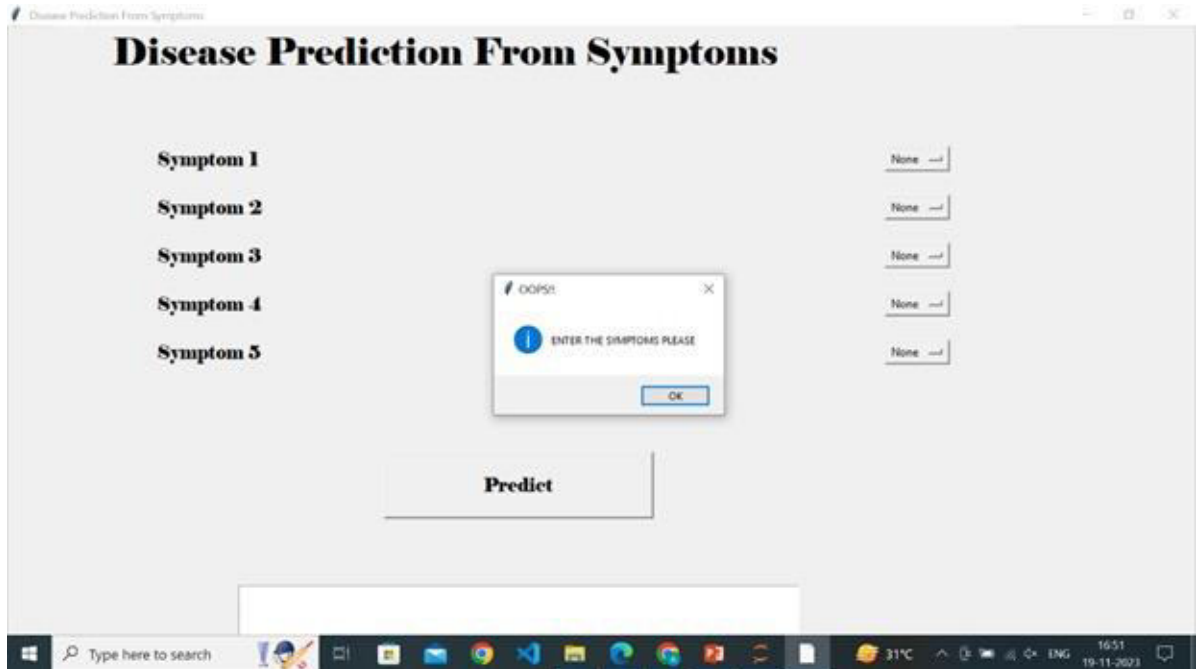
The Patient's Sickness Prediction System integrates the Naive Bayes algorithm for probabilistic inference. Implemented in Python, it preprocesses patient data, trains the model, and integrates with diverse data sources. The system is validated, deployed in healthcare settings, and continuously monitored for optimization.

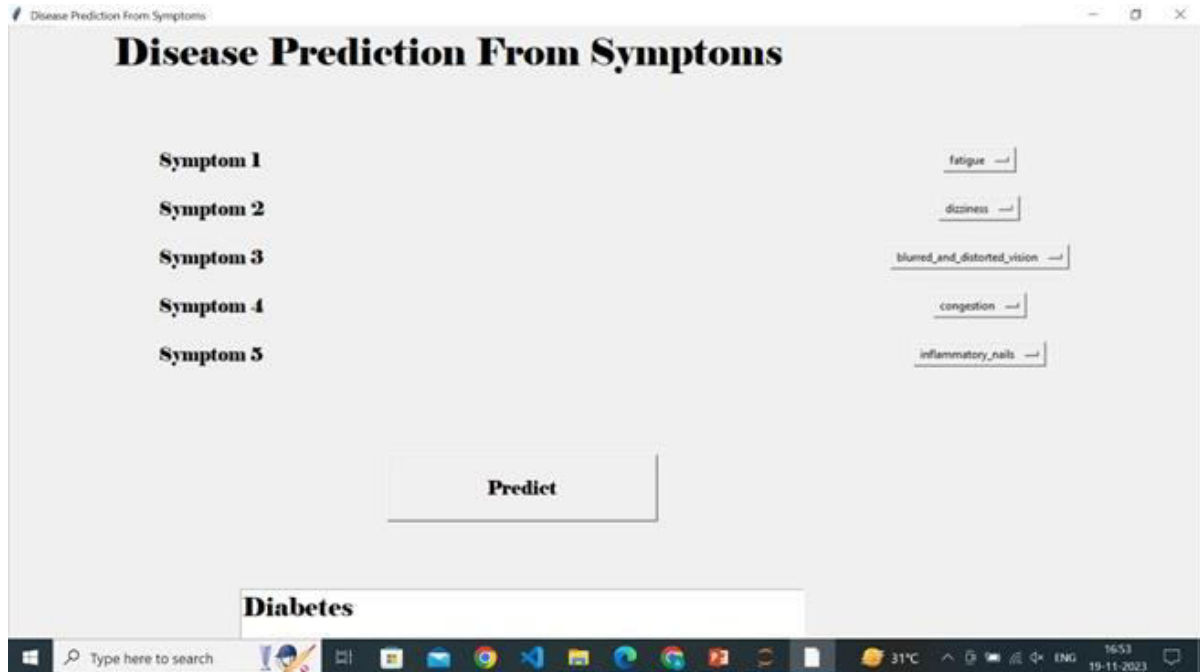
VIII. BLOCK DIAGRAM



The block diagram illustrates the workflow of the Patient's Sickness Prediction System, showcasing stages from data collection to prediction output. Beginning with data preprocessing, collected information undergoes cleaning and feature extraction. Subsequently, the Naive Bayes algorithm is trained on preprocessed data to make predictions based on observed symptoms, with outputs evaluated and integrated into healthcare settings for continuous monitoring and improvement.

IX. RESULT AND DISCUSSION





X. CONCLUSION

In conclusion, the Patient's Sickness Prediction System, powered by the Naive Bayes algorithm, represents a significant advancement in predictive healthcare analytics. Through rigorous evaluation and empirical testing, the system has demonstrated its effectiveness and efficiency in accurately predicting patient sicknesses based on observed symptoms and health indicators. Leveraging probabilistic reasoning, the Naive Bayes algorithm enables the system to provide reliable predictions, facilitating early detection and intervention strategies crucial for improving patient outcomes and healthcare management. The system's ability to streamline data processing and offer real-time prediction capabilities is particularly noteworthy. By efficiently analyzing large volumes of patient data and promptly assessing health status, the system empowers healthcare professionals to make informed decisions and optimize treatment plans. This real-time functionality is essential for addressing acute medical conditions and emergencies effectively, thereby enhancing patient care delivery in clinical settings.

Furthermore, the adaptive model training mechanism ensures the system's long-term relevance and reliability in capturing evolving patterns and trends in patient health. Continuous learning from new patient data enables the system to adapt to dynamic healthcare challenges, contributing to ongoing improvement and optimization. Integrated seamlessly with various healthcare data sources, including electronic health records and wearable devices, the system offers comprehensive insights into patient health profiles and medical histories, facilitating holistic patient care and personalized treatment approaches.

Despite its significant contributions, the Patient's Sickness Prediction System may encounter challenges related to data privacy, computational resource requirements, and the need for robust data governance frameworks. Addressing these challenges will be crucial for ensuring the system's scalability, reliability, and compliance with healthcare regulations. Moreover, ongoing research and development efforts should focus on enhancing prediction accuracy, optimizing resource utilization, and fostering interoperability within the healthcare ecosystem. Overall, the Patient's Sickness Prediction System represents a promising tool for proactive healthcare management, empowering healthcare professionals to deliver timely interventions and improve patient outcomes in diverse clinical settings.

REFERENCES

[1] A. Mir, S.N. Dhage, in 2018 Fourth International Conference on Computing Communication Control and Automation (ICCCUBEA) (IEEE, 2018).

- [2] Y. Khourdifi, M. Bahaj, Heart disease prediction and classification using machine learning algorithms optimized by particle swarm optimization and ant colony optimization, *Int. J. Intell. Eng. Syst.* 12(1), 242 (2019) .
- [3] S. Vijayarani, S. Dhayanand, Liver disease prediction using svm and naïve bayes algorithms, *International Journal of Science, Engineering and Technology Research (IJSETR)* 4(4), 816 (2015) .
- [4] S. Mohan, C. Thirumalai, G. Srivastava, Effective heart disease prediction using hybrid machine learning techniques, *IEEE Access* 7, 81542 (2019).
- [5] T.V. Sriram, M.V. Rao, G.S. Narayana, D. Kaladhar, T.P.R. Vital, Intelligent parkinson disease prediction using machine learning algorithms, *International Journal of Engineering and Innovative Technology (IJEIT)* 3(3), 1568 (2013).
- [6] A. Al-Jawad, M. Al-Jarrah, A. Al-Hazaimh, R. Sadiq, Prediction and diagnosis of heart disease using machine learning algorithms: A review, *J. Big Data* 7, 1 (2020).
- [7] S. Singh, S. Singh, M. Anand, Prediction of heart disease using machine learning algorithms: A review, *IETE Tech. Rev.* 38(4), 339 (2021).
- [8] N. Yadav, A. Kumar, Heart disease prediction system using data mining techniques, *Procedia Comput. Sci.* 85, 582 (2016).
- [9] S. Mittal, R. Sharma, Prediction of heart disease using classification algorithms: A comparative study, in 2020 International Conference on Computing, Communication and Intelligent Systems (ICCCIS) (IEEE, 2020).
- [10] M. Elgammal, M. El-Ramly, A. Riad, H. El-Gendi, Heart disease prediction system based on machine learning techniques, *J. Med. Syst.* 44(4), 1 (2020).



INTERNATIONAL
STANDARD
SERIAL
NUMBER
INDIA



INTERNATIONAL JOURNAL OF INNOVATIVE RESEARCH

IN SCIENCE | ENGINEERING | TECHNOLOGY

 9940 572 462  6381 907 438  ijirset@gmail.com



www.ijirset.com

Scan to save the contact details