



e-ISSN: 2319-8753 | p-ISSN: 2347-6710

IJRSET

International Journal of Innovative Research in
SCIENCE | ENGINEERING | TECHNOLOGY



INTERNATIONAL JOURNAL OF INNOVATIVE RESEARCH

IN SCIENCE | ENGINEERING | TECHNOLOGY

Volume 13, Issue 6, June 2024

ISSN INTERNATIONAL
STANDARD
SERIAL
NUMBER
INDIA

Impact Factor: 8.423

 9940 572 462

 6381 907 438

 ijirset@gmail.com

 www.ijirset.com

Cine Management-A Web Application

Animol Princy E, Sudha S

PG Scholar, Department of Computer Applications, RVS College of Engineering, Dindigul, Tamil Nadu, India

Assistant Professor, Department of Computer Applications, RVS College of Engineering, Dindigul, Tamil Nadu, India

ABSTRACT: The Cinema Management System is a web application designed to streamline the operations of a cinema, including movie scheduling, ticket booking, and user management. Utilizing ReactJS for the front-end development, this project aims to provide an intuitive and user-friendly interface for both cinema administrators and customers. The system integrates with a backend API to manage data and ensures a seamless experience with real-time updates and responsive design. This project presents a comprehensive cine management system developed using React.js, designed to streamline the operations of movie theaters. The application offers an intuitive user interface for managing movie schedules, ticket bookings, and customer interactions.

KEYWORDS: Cine Management, Theater, Film, Cinema, Auditorium, and Movie Project.

I. INTRODUCTION

The Cine Management System is a comprehensive web application developed using ReactJS to facilitate the management of cinema operations, including movie scheduling, ticket booking, and user management. This system is designed to provide a seamless experience for both cinema administrators and customers, ensuring efficient and user-friendly interactions. The application leverages modern web technologies to offer real-time updates and a responsive design. Our Cinema Management System is a desktop application which will be implemented in Cinema, which will help maintaining the All Aspects of Cinema, Movies, Customer's details, and Sale's detail.

II. EXISTING SYSTEM

A cinema management system is a software application designed to streamline and automate various operations involved in running a movie theater. This includes tasks related to ticket sales, show scheduling, customer relationship management, inventory management, and more. Here are some key components and features typically found in an existing cinema management system.

III. PROPOSED SYSTEM

The proposed cinema management system is an advanced, scalable solution designed to enhance operational efficiency and customer satisfaction. It features omnichannel ticket booking with real-time seat selection, AI-driven show scheduling, and a unified POS system for seamless transactions. Comprehensive CRM capabilities enable personalized marketing and robust loyalty programs, while real-time inventory tracking and supplier integration streamline concession management. Security is bolstered by multi-factor authentication and data encryption, and the system's modular architecture allows for easy customization and integration.

3.1 System Requirement

| | |
|----------------|---|
| Processor : | Intel(R) Pentium(R) CPU N3170 @ 1.60GHz |
| RAM : | 4 GB |
| Hard disk : | 520 GB |
| Compact Disk : | 4.7 GB |
| Monitor : | Lenovo Intel(R) HD Graphics |
| Keyboard : | Standard PS/2 Keyboard |
| Mouse : | Standard PS/2 Compatible Mouse |

3.2 System Design

A Cine Management System is a comprehensive software solution designed to streamline and automate various aspects of managing a cinema or movie theater. At its core, such a system integrates modules for ticket booking, concessions management, scheduling, and customer relationship management. The ticket booking module allows patrons to browse available shows, select seats, and make reservations either online or at the box office. Concessions management handles inventory, sales, and reporting for snacks, beverages, and other items sold at the theater. Scheduling ensures efficient allocation of screens and showtimes, taking into account factors like film popularity, audience demographics, and contractual obligations with distributors. Additionally, the customer relationship management module tracks customer preferences, handles loyalty programs, and facilitates targeted marketing campaigns to enhance customer satisfaction and loyalty. Overall, a well-designed Cine Management System optimizes operations, improves the customer experience, and maximizes revenue for cinema owners.

A Cine Management System (CMS) serves as a centralized software platform tailored to the needs of cinema operations. It comprises modules for ticketing, concessions, scheduling, and customer management. The ticketing module enables seamless booking experiences, whether online or at the box office, allowing patrons to select seats and purchase tickets for desired showtimes. Concessions management tracks inventory, sales, and profit margins for snacks and beverages, ensuring efficient stock replenishment and pricing strategies. Scheduling functionalities optimize screen allocation and showtimes based on factors like film popularity and audience demographics, maximizing revenue potential. The customer management module stores and analyzes customer data to personalize experiences, manage loyalty programs, and execute targeted marketing campaigns. Through integration with payment gateways and accounting systems, the CMS facilitates secure transactions and financial tracking. Additionally, reporting and analytics tools provide insights into performance metrics, aiding in strategic decision-making and operational improvements. Overall, a robust CMS streamlines operations, enhances the customer journey, and boosts profitability for cinema owners.

3.2.1 System Architecture

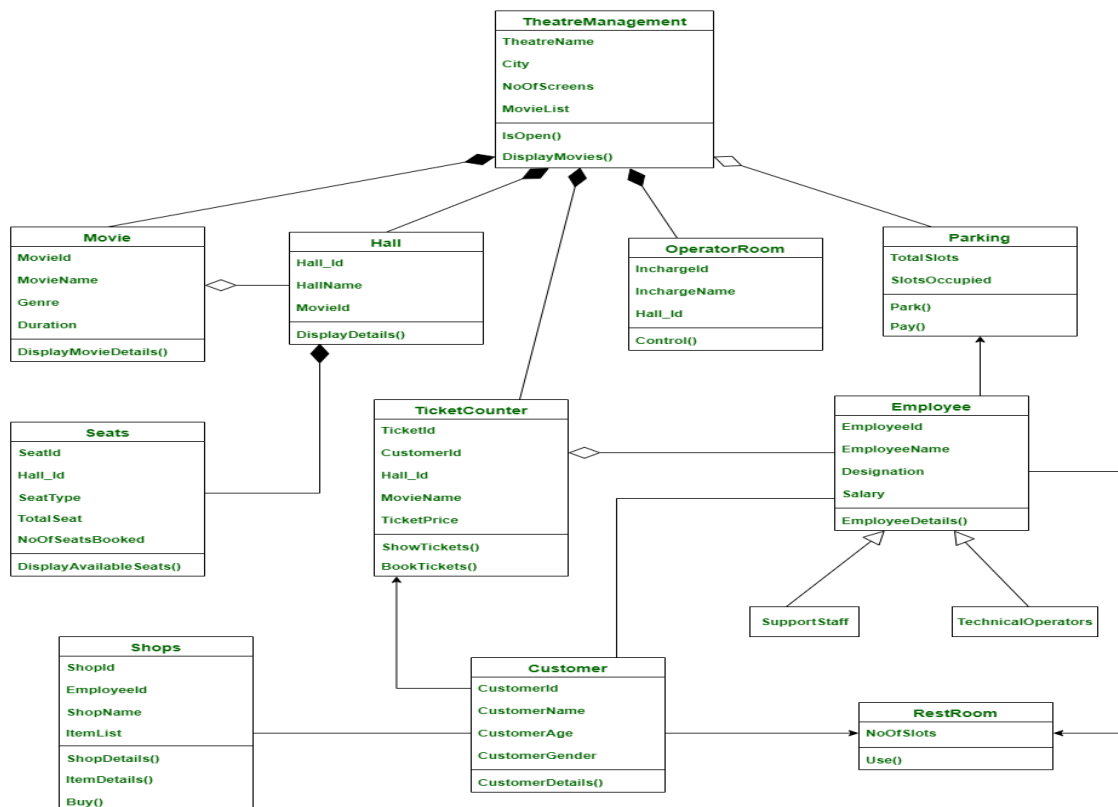


Fig: 1: Architecture Diagram

3.2.2 Data Flow Diagram

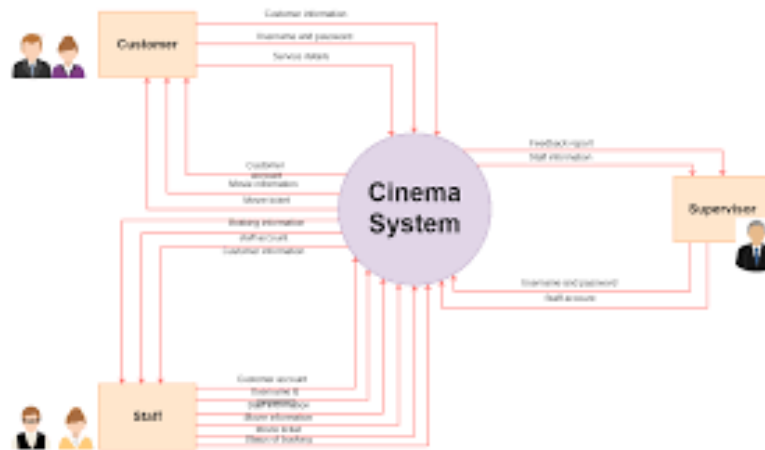


Fig:2: DFD Diagram

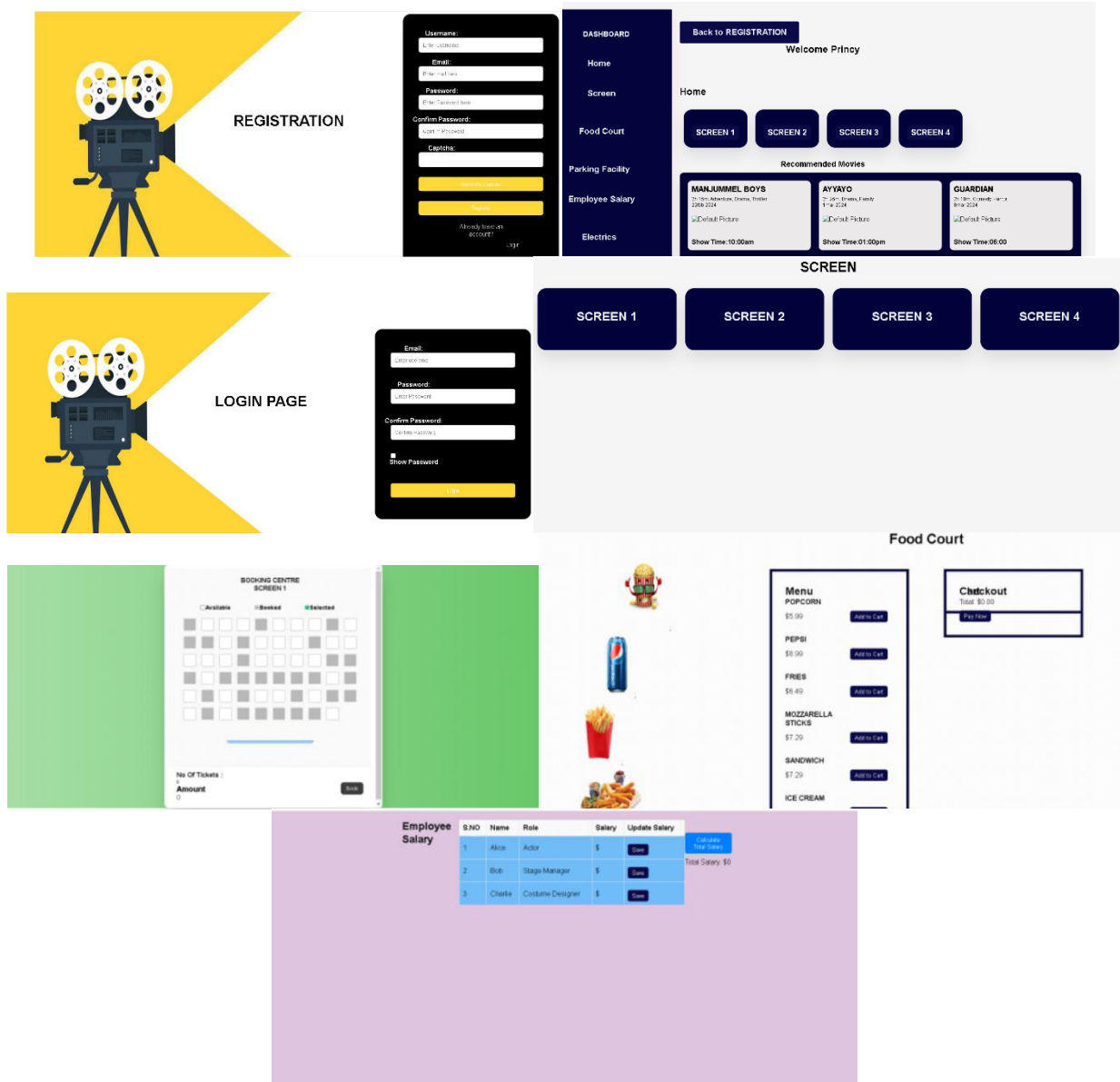
IV. SYSTEM OVERVIEW

The Cine Management System (CMS) offers a comprehensive solution for managing all aspects of a cinema or movie Theater. At its core, the system integrates modules for ticketing, concessions, scheduling, and customer management. The ticketing module enables patrons to easily browse available shows, select seats, and make reservations either online or through the box office. It ensures a seamless booking experience and supports various payment methods.

Key Features

- 1.**User Authentication:** Secure login and registration for users and administrators.
- 2.**Security Management Module:** will provide the access to the system according to the privileges of the user. This will be used to authenticate the user accessing the system.
- 3.**Screen/Hall Management Module:** is keeping the record of the Screen/Hall, new Screen/Hall detail etc. The purpose of this module's will be to contain the data of the Screen and information about the new Screens.
- 4.**Movies Management Module:** will help to manage Movies information i.e. adding new Movies, updating & searching Movies.
- 5.**Expense Management Module:** will help to manage Expense information a adding new expense, updating Expense & searching Expense.
- 6.**Sale's Management Module:** will help to manage Sale's information adding new Sale, updating Sale & searching Sale.
- 7.**Profit and loss Management Module:** will help to manage Profit and loss information.
- 8.**Employees Management Module:** will help to manage Employees information i.e. adding new Employees, updating & searching Employees.
- 9.**Payment Integration:** Secure online payment processing for ticket purchases.

V. OUTPUT



VI. BENIFITS

The Real Estate System offers several benefits to users and administrators:

- **Efficiency:** Streamlines the process of property transactions, reducing the time and effort required for buying and selling properties.
- **Accessibility:** Provides a centralized platform for property information, accessible from anywhere at any time.
- **Transparency:** Offers detailed property information, including images and descriptions, enhancing transparency and trust between buyers and sellers.
- **Feedback Mechanism:** Allows users to provide feedback, helping improve the platform and property listings.

VII. CONCLUSION

In the culmination of this Endeavor to create a movie review app, we envision a comprehensive platform that transcends conventional movie rating and discussion forums. Our mission is to craft a dynamic community hub that not only enriches the cinematic experience but also fosters meaningful interactions among users globally.

VIII. FUTURE WORK

Looking ahead, integrating React Js into our movie review app presents exciting opportunities for future enhancements. With its cross-platform compatibility, we aim to reach a wider audience by ensuring seamless performance across both iOS and Android devices. React Js component-based architecture enables us to create a visually appealing and intuitive user interface, enhancing user engagement and interaction. Leveraging React Js capabilities, we plan to optimize the app's performance, improving speed, and efficiency for a smoother user experience.

REFERENCES

BOOK REFERENCES

- 1.Hands-On Design Patterns with React Js
React Official Websites
- 2.Hands-On Design Patterns with React Js
YouTupe
- 3.React Js Cookbook
Book by: Dan Ward.

PAPER REFERENCES

- 4.Jordan Walke (2013). "Introducing React: a JavaScript Library for Building User Interfaces."
This is the original announcement by Jordan Walke, the creator of React, which explains the motivations and core concepts behind React. It can be found on the React blog.
- 5.Facebook Inc. (2014). "React: A declarative, efficient, and flexible JavaScript library for building user interfaces."
This paper provides an overview of React principles and its virtual DOM concept. It's often cited in early discussions about React architecture and performance.



INTERNATIONAL
STANDARD
SERIAL
NUMBER
INDIA



INTERNATIONAL JOURNAL OF INNOVATIVE RESEARCH

IN SCIENCE | ENGINEERING | TECHNOLOGY

 9940 572 462  6381 907 438  ijirset@gmail.com



www.ijirset.com

Scan to save the contact details