



e-ISSN: 2319-8753 | p-ISSN: 2347-6710

IJRSET

International Journal of Innovative Research in
SCIENCE | ENGINEERING | TECHNOLOGY



INTERNATIONAL JOURNAL OF INNOVATIVE RESEARCH

IN SCIENCE | ENGINEERING | TECHNOLOGY

Volume 13, Issue 6, June 2024

ISSN INTERNATIONAL
STANDARD
SERIAL
NUMBER
INDIA

Impact Factor: 8.423

9940 572 462

6381 907 438

ijirset@gmail.com

www.ijirset.com

Fortune Engineering ERP Software

Dr. A. R Jayasudha¹, Shirin Fathima M²

Professor, Department of Master of Computer Applications, Hindusthan College of Engineering and Technology,
Coimbatore, India¹

II MCA Students, Department of Master of Computer Applications, Hindusthan College of Engineering and
Technology, Coimbatore, India²

ABSTRACT: The project entitled “ERP Management” has been developed for providing assistance to chapathi maker sellers to distribute good price between chapathi maker sellers and customers with reference to Fortune engineering and co. This site is utilized for keeping up centralized store of all the data related to chapathi creator dealer and their coordinate offering items like mixture kneaders and programmed chapathi creators. This Venture gives a stage for wholesalers and clients a simple communication. This extend is valuable to offer and buys programmed chapathi creators and batter kneaders through the app. Chapathi creator sellers can effectively communicate with the assistance of app. Government plans are too overseen in app. Existing framework is created as it were for chapathi producer vender help, while proposed framework will be executed for making a difference clients to buy unused chapathi creator programmed chapathi creators from chapathi producer sellers directly with or without going by chapathi creator shop. The most objective of this site is to depict a total and nitty gritty picture of in general buy choice making handle of customers shopping online for mixture kneaders and programmed chapathi creators specifically with chapathi creator venders. The website is used to manage dough kneaders & automatic chapathi makers sell by chapathi maker sellers. This website allows the people to buy the Automatic chapathi makers and Dough kneaders directly from chapathi maker sellers. With this application the customer can buy the automatic chapathi makers and dough kneaders at best value. The website has been developed using Python and SQLite.

KEYWORDS: Python, Django, Sqlite.

I. INTRODUCTION

At Chapathi maker Shop one can believe in complete customer satisfaction. The online retail market has grown tremendously over the last decades, with sales and consumer adoption increasing every year. However, this growth has been highly heterogeneous across retail segments. The online dough kneaders and automatic chapathi makers business, in particular, has witnessed a difficult start in Europe, India and the U.S., with the online operations of established customers and click-only Chapathi maker stores struggling to survive. Subsequently, the scope of past scholarly inquire about related to online shopping and customer conduct has at times tended to the chapathi creator retail advertise, with the few existing ponders centering as it were on consumers' selection and common demeanors and inspirations towards online programmed chapathi producers and batter kneaders shopping. As a result, not much is known almost how precisely shoppers shop online for mixture kneaders and programmed chapathi producers. In this modern society, bounded by the look of steady mechanical progresses and developments, customers are getting to be less and less faithful to any particular brand or retail arrange and progressively center on the fulfillment of prompt objectives and needs. Thus, online shopping has gotten to be a profoundly beneficial retail organize, accomplishing tall deals values over much of the created world .Although yet far from reaching its full potential in several markets, the current percentage of online dough kneaders and automatic chapathi makers sales is certainly something to follow closely .As traditional and click-only customers begin to learn from past errors and learn to take better advantage of the technological innovations developed for the digital world, more companies are venturing into this segment with improved business models and service levels Concurrently, Western consumers are experiencing increasing time and budget constraints, both of which are impacting considerably their shopping behavior Namely, they are becoming more value-conscious due to the current economic crisis, which together with the time scarcity felt, leads to an increasing demand for lower search costs, higher shopping convenience, better price deals and more rewarding purchase experiences.

II. RELATED WORK

SCOPE FOR FUTURE ENHANCEMENT

Further expansion of the system also can be done in future if needed. The application can be enhanced in the future with the needs of the organization. The database and the information can be updated to the latest forthcoming versions. There are moreover conceivable outcomes for upgrading and encourage creating the venture with customized reports concurring to the most recent data and needs of the company

Hence the framework can be modified in agreement with long haul necessities and headways. Framework execution assessment must be checked not as it were to decide whether or not they perform as arrange but too to decide in the event that they ought to need to meet changes within the data required for the company. The performance of the system will be evaluated to determine whether system achieves the results that are expected and whether the predicted benefits of the system are realized.

Following enhancements can be made in future

- Website can be hosted in real time.
- Multiple languages can be integrated in addition to English language.
- System must be developed for sending product update reminder through SMS and gmail.
- In future alerts should be sent to all mobile networks.
- Alerts should be sent automatically from the system without the involvement of the administrator.

REFERENCE BOOKS

III. METHODOLOGY

Proposed System:

The most objective of this application is to build web site which is able offer assistance the chapathi producer dealer to urge the most excellent from his inputs. The framework gives accessibility of up-to-date data on rates in different state Markets . Through the system, chapathi maker sellers will get a choice to decide when and where to sell.

Preferences of Proposed Framework:

Highlights of the proposed framework are as takes after:

- The website would distribute trader's margin between chapathi maker sellers and customers
- People can register to have a complete view of the ERP Management market prices
- Feedback or complaint facilities can be posted easily through the website
- Ensures display of daily market rate updates to registered users
- People can register to have a complete view of the ERP Management market prices
- All the available chapathi maker shop products can be easily accessed by consumers. Hence it provides direct marketing and also ensures the chapathi maker sellers with a good pay and least investment.
- Chapathi maker sellers will get a choice to decide when and where to sell.
- Unused products can be purchased by customers.
- Chapathi maker sellers will get good margin by eliminating mid-price since customers directly communicate with chapathi maker sellers.
- Customer and chapathi maker seller can contact easily through website.

MODULE DESCRIPTION:

- Registration
- Login
- Purchasing of dough kneaders and automatic chapathi makers
- Feedback

Registration

Typically the starting stage within the application where the client makes an account in arrange to do the exchanges and purchase the batter kneaders and programmed chapathi producers Chapathi maker seller can chose chapathi maker seller registration option to register themselves. Clients have isolated enlistment frame to enlist themselves in arrange to utilize the app. This module makes a difference the clients to form an account in arrange to get to the app. Client enlistment incorporates Title, Client Title, Mail, Secret word, and area. By submitting these values they will be put away within the database. In addition to common registration columns, chapathi maker seller registration form will have location details. After registration, chapathi maker sellers will be able to see the government schemes in app.

Login

The user accesses his account by using the credentials in order to view the items and make a purchase. Here user logins the website using his credentials like username and password. Then he/she views the sites and performs some operations.

Purchasing of dough kneaders and automatic chapathi makers

Chapathi maker seller will post the products which are available along with its price and description. The user checks the price of the automatic chapathi maker and fruit that he /she wants to buy and verifies the current market price, whole seller price etc. Then they can add items to the cart. The items in the cart can be added or can be removed. The total amount is calculated based on each product price and its count. The buyer will add the items to the cart which he/she is willing to buy and then makes the payment. While purchasing items, through chatbot, customer can search nearby location to find nearby chapathi maker seller information to purchase items chapathi makerally and freshly. Chatbot option is nothing but the option which enables famers and users to communicate with each other.

Feedback

Here the customer can give us the feedback about the items and he/she can give us in what way we can develop our services further if any.

INFORMATION STREAM GRAPH :

A data stream chart is graphical gadget utilized to delineate and analyze improvement of data through a system. These are the central device and the introduce from which the other components are made. The alter of data from input to abdicate, through arranged, may be depicted reliably and unreservedly of physical components related with the system. These are known as the reliable data stream charts. The physical data stream charts show up the genuine actualizes and advancement of data between people, divisions and workstations. A full depiction of a system truly comprises of a set of data stream charts .

DFD Images

- Inside the DFD, there are four pictures.
- A square characterizes a source(originator) or objective of system data.
- An jolt recognizes data stream. It is the pipeline through which the information stream.
- A circle or a bubble talks to a handle that changes drawing nearer data stream into dynamic data streams.

Sorts OF Information Stream Charts

- Current Physical
- Current Coherent
- Unused Consistent
- Unused Physical

Current physical

In Current Physical DFD plan title join the title of people or their positions or the names of computer systems that might deliver a number of of the by and large system-processing title joins an recognizable verification of the development utilized to plan the data. So too data streams and data stores are as often as possible names with the names of the veritable physical media on which data are put absent such as record envelopes, computer records, commerce shapes or computer tapes.

Current coherent

The physical viewpoints at the system are removed as much as conceivable so that the current system is lessened to its essence to the data and the processors that alter them in any case of genuine physical outline.

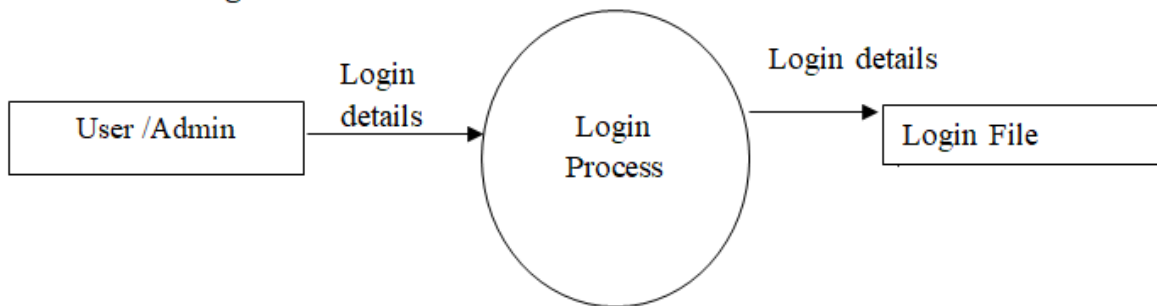
Physical Modern

The modern physical speaks to as it were the physical usage of the unused system.

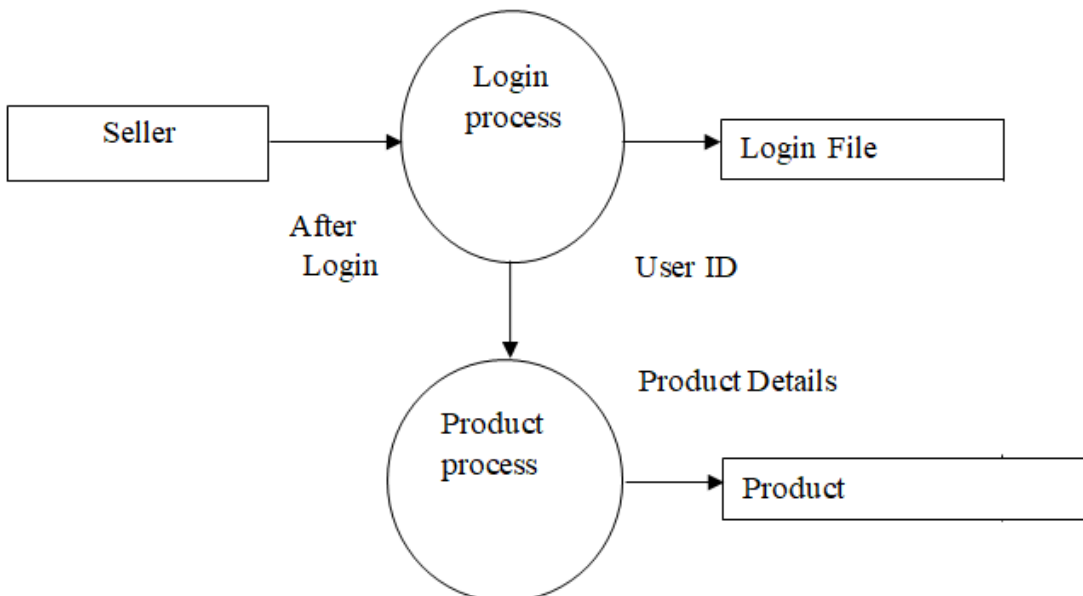
New Logical

Customarily completely like a current coherent show up on the off chance that the client were totally cheery with he client were totally cheerful with the comfort of the current framework but had issues with how it was executed as often as possible through the progressed consistent show up will separate from current coherent outline in spite of the fact that having extra capacities, preeminent work flight and wasteful.

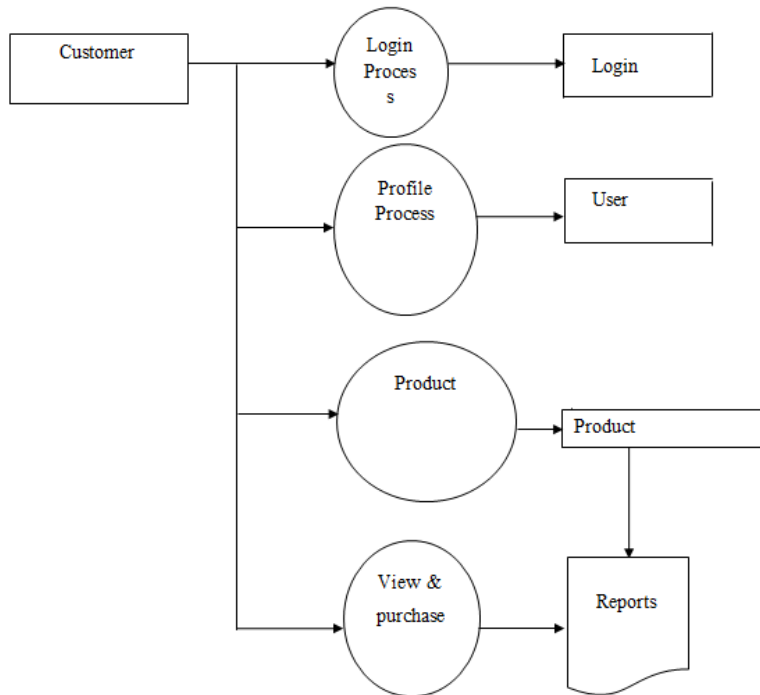
DFD Level 0: Login



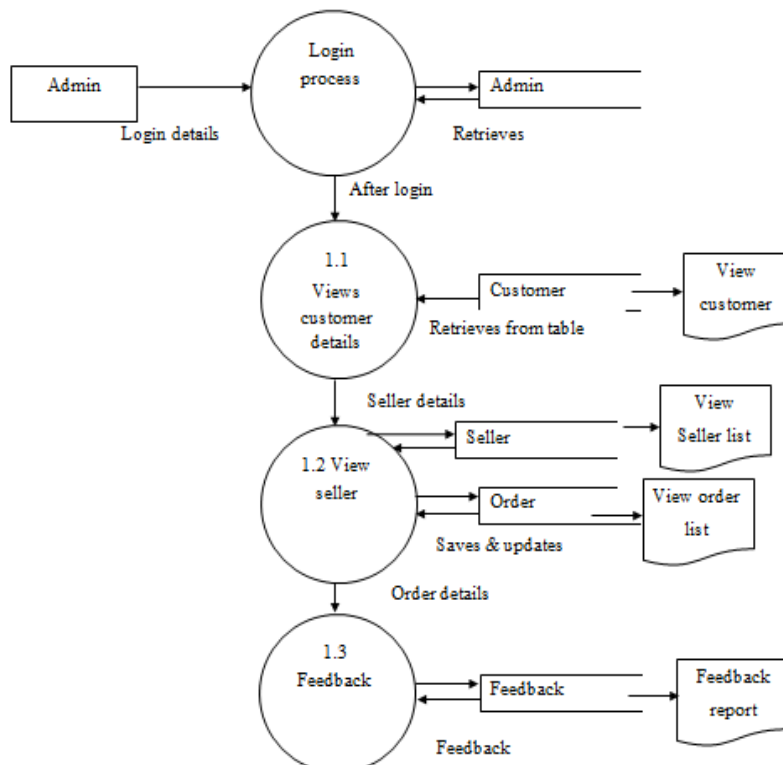
DFD Level 1: Chapathi maker seller details



Level 2: Customer



Level 2:Admin



SYSTEM SPECIFICATION**HARDWARE SPECIFICATION**

Hard Disk	: 450 GB
Keyboard	: 110 Keys
Monitor	: 17 inch LCD display
Mother Board	: Intel
Mouse	: HP Mouse
Processor	: Intel i5
RAM Capacity	: 16 GB
Speed	: 3 GHZ
System bus	: 32 bit

SOFTWARE SPECIFICATION

Operating System	: Windows 8
Front End	: Python, HTML, CSS
Framework	: Django
Back End	: SQLite

SOFTWARE DESCRIPTION**FRONT END (PYTHON)**

Python could be a portable working framework (OS) as of now created by Google, based on the Linux bit and planned basically for touchscreen portable gadgets such as smartphones and tablets. Python's client interface is basically based on coordinate control, utilizing touch motions that freely compare to real-world activities, such as swiping, tapping and pinching, to control on-screen objects, in conjunction with a virtual console for content input. In expansion to touchscreen gadgets, Google has assist created Python TV for tvs, Python Auto for cars, and Python Wear for wrist observes, each with a specialized client interface. Variations of Python are too utilized on scratch pad, amusement supports, advanced cameras, and other hardware.

Python has the biggest introduced base of all working frameworks of any kind. Python has been the most excellent offering OS on tablets since 2013, and on smartphones it is prevailing by any metric. At first created by Python, Inc., which Google bought in 2005, Python was revealed in 2007, together with the establishing of the Open Handset Collusion – a consortium of equipment, computer program, and media transmission companies committed to progressing open measures for portable gadgets. As of July 2013, the Google Play store has had over one million Python applications ("apps") dispersed, and over 50 billion applications downloaded. An April–May 2013 diagram of flexible application engineers found that 71% of engineers make applications for Python, and a 2015 outline found that 40% of full-time capable creators see Python as their require target arrange, which is comparable to Apple's iOS on 37% with both stages far off over others.

At Google I/O 2014, the company uncovered that there were over one billion lively month to month Python clients, up from 538 million in June 2013. Python's source code is discharged by Google underneath open source licenses, in appear abhor toward of the truth that most Python contraptions within the long run transport with a combination of open source and restrictive computer program, counting first class computer program required for getting to Google organizations. Python is overwhelming with progression companies that require a ready-made, low-cost and customizable working framework for high-tech contraptions. Its open nature has energized a wide community of planners and partners to utilize the open-source code as a establishment for community-driven meanders, which consolidate cutting edge highlights for progressed users or bring Python to contraptions at to begin with dispatched with other working frameworks . At the same time, as Python has no centralised overhaul framework most python gadgets come up short to get security upgrades. Investigate in 2015 concluded that nearly 90% of python in utilize had Know but unpatched security vulnerabilities due to need of overhauls and back

FEATURES**INTERFACE**

Python's default client interface is basically based on coordinate control, utilizing touch inputs that freely compare to real-world activities, like swiping, tapping, squeezing, and invert squeezing to control on-screen objects, in conjunction

with a virtual console Amusement controllers and full-size physical consoles are upheld by means of Bluetooth or USB. The reaction to client input is outlined to be prompt and gives a liquid touch interface, regularly utilizing the vibration capabilities of the gadget to supply haptic input to the user. Internal equipment, such as accelerometers, spinners and vicinity sensors are utilized by a few applications to reply to extra client activities, for case altering the screen from representation to scene depending on how the gadget is arranged, or permitting the client to direct a vehicle in a hustling amusement by pivoting the gadget, mimicking control of a directing wheel .

A homescreen may be made up of a few pages, between which the client can swipe back and forward, in spite of the fact that Python's homescreen interface is intensely customisable, permitting clients to alter the see and feel of the gadgets to their tastes Third-party apps accessible on Google Play and other site stores can broadly re-theme the homescreen, and indeed mirror the see of other working frameworks, such as Windows Phone. Most producers, and a few remote carriers, tweak the see and feel of their Python gadgets to distinguish themselves from their competitors. Applications that handle intuitive with the homescreen are called "launchers" since they, among other purposes, dispatch the applications introduced on a gadget. Along the beat of the screen could be a status bar, appearing data almost the gadget and its network .

APPLICATIONS

Applications ("apps"), which expand the usefulness of gadgets, are composed utilizing the Python program advancement unit (SDK) and, frequently, the Django programming dialect that has total get to to the Python APIs. Django may be combined with C/C++, beside a choice of non-default runtimes that permit superior C++ bolster; the Go programming dialect is additionally upheld since its form 1.4, which can too be utilized only in spite of the fact that with a limited set of Python APIs. The SDK incorporates a comprehensive set of improvement devices, counting a debugger, program libraries, a handset emulator based on QEMU, documentation, test code, and instructional exercises.

At first, Google's bolstered coordinates advancement environment (IDE) was Obscure utilizing the Python Advancement Devices (ADT) plugin; in December 2014, Google discharged Python Studio, based on IntelliJ Thought, as its essential IDE for Python application advancement. Other improvement devices are accessible, counting a local improvement pack (NDK) for applications or expansions in C or C++, Google Site Innovator, a visual environment for amateur software engineers, and different cross stage portable web applications systems. In January 2014, Google divulged an system based on Apache Cordova for porting Chrome HTML 5 web applications to Python, wrapped in a local application shell.

BACK END (SQLite)

SQLite could be a social database administration framework contained in a C programming library. In differentiate to many other database administration frameworks, SQLite isn't a client-server database motor. Or maybe, it is implanted into the conclusion program. SQLite is ACID-compliant and actualizes most of the SQL standard, employing a dynamically and weakly written SQL language structure that does not ensure the space astuteness. SQLite could be a well known choice as implanted database software for local/client capacity in application computer program such as web browsers. It is apparently the foremost broadly conveyed database motor, because it is utilized nowadays by a few far reaching browsers, working frameworks, and inserted frameworks (such as versatile phones), among others. SQLite has ties to numerous programming dialects

Features

SQLite executes most of the SQL-92 standard for SQL but it needs a few highlights. For case, it mostly gives triggers, and it can't compose to sees (in any case it gives Rather Than triggers that give this usefulness). Whereas it gives complex questions, it still has limited ALTER TABLE work, because it can't adjust or erase columns. SQLite employments an unusual sort framework for an SQL-compatible DBMS; rather than doling out a sort to a column as in most SQL database frameworks, sorts are allotted to person values; in dialect terms it is powerfully written. Besides, it is pitifully written in a few of the same ways that Perl is one can embed a string into an numbers column (in spite of the fact that SQLite will attempt to change over the string to an numbers to begin with, in case the column's favored sort is numbers).

This includes adaptability to columns, particularly when bound to a powerfully written scripting dialect. In any case, the method isn't convenient to other SQL items. A common feedback is that SQLite's sort framework needs the information astuteness instrument given by statically written columns in other items. The SQLite web location portrays a "strict fondness" mode, but this highlight has not however been included. In any case, it can be actualized with limitations like `CHECK(typeof(x)='integer')`. SQLite with full Unicode work is discretionary. A few computer forms or strings may get to the same database concurrently. A few studied gets to can be fulfilled in parallel. A compose get to can as it were be fulfilled on the off chance that no other gets to are right now being adjusted. Something else, the compose get to falls flat with an blunder code (or can naturally be retried until a configurable timeout terminates). This concurrent get to circumstance would alter when managing with transitory tables.

INPUT DESIGN

Within the input plan, user-oriented inputs are changed over into a computer based framework arrange. It too incorporates deciding the record media, strategy of input, speed of capture and passage on to the screen. Online information passage acknowledges commands and information through a console. The major approach to input plan is the menu and the incite plan. In each elective, the user's choices are predefined. Input information are collected and organized into a bunch of comparative information.

Once distinguished input media are chosen for preparing. Within the program, significance is given to create Graphical Client Interface (GUI), which is an critical calculate in creating productive and user-friendly program. For contributing client information, appealing shapes are planned. Client can too select craved choices from the menu, which gives all conceivable offices. Input is any information or informational entered into the memory of a computer. Two sorts of input are information and informational.

Once recognized input media are chosen for preparing. Within the program, significance is given to create Graphical Client Interface (GUI), which is an critical figure in creating effective and user-friendly computer program. For contributing client information, alluring shapes are planned. Client can too select wanted choices from the menu, which gives all conceivable offices. Input is any information or enlightening entered into the memory of a computer. Two sorts of input are information and informational.

A client reaction is an instruction you issue to the computer by reacting to a address postured by a computer program. Any equipment component that permits entering information, programs, commands, and client reactions into a computer is an input gadget. It can be said that most of the inputs are of the shape of inside and intuitively. As Input information is to be straightforwardly keyed in by the client, the console can be considered to be the foremost reasonable input gadget.

OUTPUT DESIGN

Yield plan includes indicating how generation of on-screen reports and paper based reports will happen. Yield may happen to database or record for putting away data entered or too for utilize by other frameworks. Yield is information that has been prepared into a valuable shape called data. Four sorts of yield are content, illustrations, sound, and video. Content comprises of characters (letters, numbers, accentuation marks, or any other image requiring one byte of computer capacity space) that are utilized to make words, sentences, and passages.

Illustrations are computerized representations of non-text data such as drawings, charts, photos, and movement (a arrangement of still pictures in quick arrangement that gives the dream of movement). Sound is music, discourse, or any other sound. Video comprises of pictures played back at speeds to supply the appearance of full movement. An yield gadget is any computer component competent of passing on data to a client .

Within the yield plan, the accentuation is on creating a difficult duplicate of the data asked or showing the yield on the CRT screen in a predetermined format. Two of the foremost yield media nowadays are printers and the screen. Most clients presently get to their reports from a difficult duplicate or screen show.

Computer's yield is the foremost vital and coordinate source of data to the client, proficient, consistent, yield plan ought to move forward the frameworks relations with the client and offer assistance in decision-making. As the yields are the

foremost vital source of data to the user, better plan ought to progress the system's connection conjointly ought to offer assistance in decision-making.

COMES ABOUT AND TALK SYSTEM TESTING

The common see of testing held by clients is that it is performed to illustrate that there are no botches in a program. Typically frequently incredibly troublesome since originator cannot illustrate to be one hundred percent correct. Consequently, the preeminent valuable and down to soil approach is with the understanding that testing is the strategy of executing a program with unequivocal intentional of finding botches that make the program come up brief

- Arranging
- Extend and prepare control
- Hazard administration
- Reviews
- Estimation instruments
- Organization and polished skill

TEST ARRANGE

A few time as of late going for testing, to start with we need to select upon the sort of testing to be carried out. The taking after components are taken into thought

- To ensure that information really streams into and out of program
- To find out whether the neighborhood data structures keeps up its insight in the midst of all steps in an calculation execution
- To ensure that the module work really at boundaries built up to control or restrain taking care of
- To discover out whether blunder - dealing with ways are working accurately or not
- To find out whether the values are precisely redesign or not
- Check for validations

UNIT TESTING

Unit or module testing is the strategy of testing the individual components (subprograms or procedures) of a program. The reason is to discover aberrations between the modules interface detail and its genuine behavior. In our system each module must be attempted independently for endorsement

ENDORSEMENT TESTING

Validation testing gives the ultimate confirmation that computer program meets all useful, behavioral and execution necessity. The computer program once approved must be combined with other framework components. System testing confirms that as components combine legitimately which by and large framework work and performance is accomplished

INTEGRATION TESTING

Integration testing is the strategy of combining and testing various components together. The fundamental objective of integration testing is to discover botches inside the meddle between the components. In our system each of the modules indicated over, are attempted for checking the integration between them, after each of them are attempted independently.

UNIT TESTING

Unit or module testing is the method of testing the person components (subprograms or methods) of a program. The reason is to find inconsistencies between the modules interface determination and its real behavior. In our framework each module must be tried autonomously for approval.

APPROVAL TESTING

Approval testing gives the ultimate confirmation that program meets all utilitarian, behavioral and execution prerequisite. The program once approved must be combined with other framework components. Framework testing confirms that as elements combine appropriately which in general framework work and execution is accomplished

INTEGRATION TESTING

Integration testing is the method of combining and testing numerous components together. The essential objective of integration testing is to find mistakes within the interfacing between the components. In our framework each of the modules specified over, are tried for checking the integration between them, after each of them are tried exclusively. approval.

SYSTEM IMPLEMENTATION IMPLEMENTATION PLAN

The execution of framework environment.

- Self determination and allotment for execution assignments.
- Discussion with unions and assets accessible.
- Standby offices and channels of communication.

USER TRAINING AND DOCUMENTATION

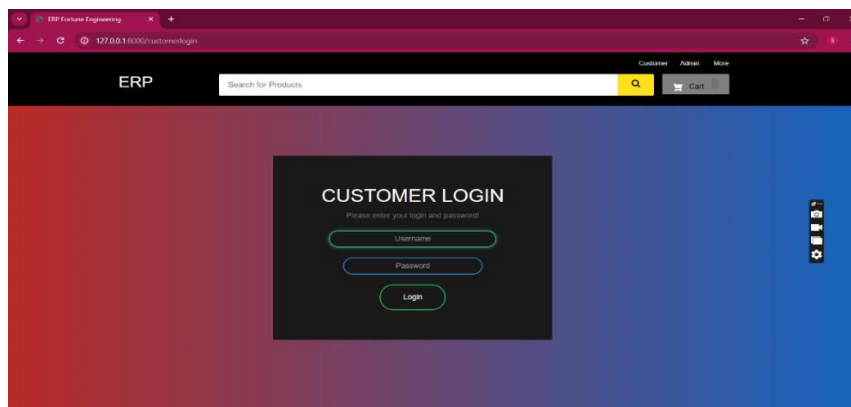
Developing custom training materials is time-consuming and requires thorough planning. However, it can be very cost-effective for organizations that have more than 100 users who need to be trained on a BI application, and it can be the most beneficial learning experience for students. We have several clients that have chosen this training approach and believe that it can be more effective and streamlined compared to other training approaches for their users. Each training course is developed using detailed learning objectives. Software companies that develop business intelligence (BI) applications advertise that their products are easy to use. The graphical user interface enables users to request, manipulate and format data in a manner that is consistent with other software with which they are already familiar. Since most BI applications have a look and feel similar to other commonly acceptable software such as a spreadsheet or word processing applications and are easy to use, why provide user training.

IV. CONCLUSION

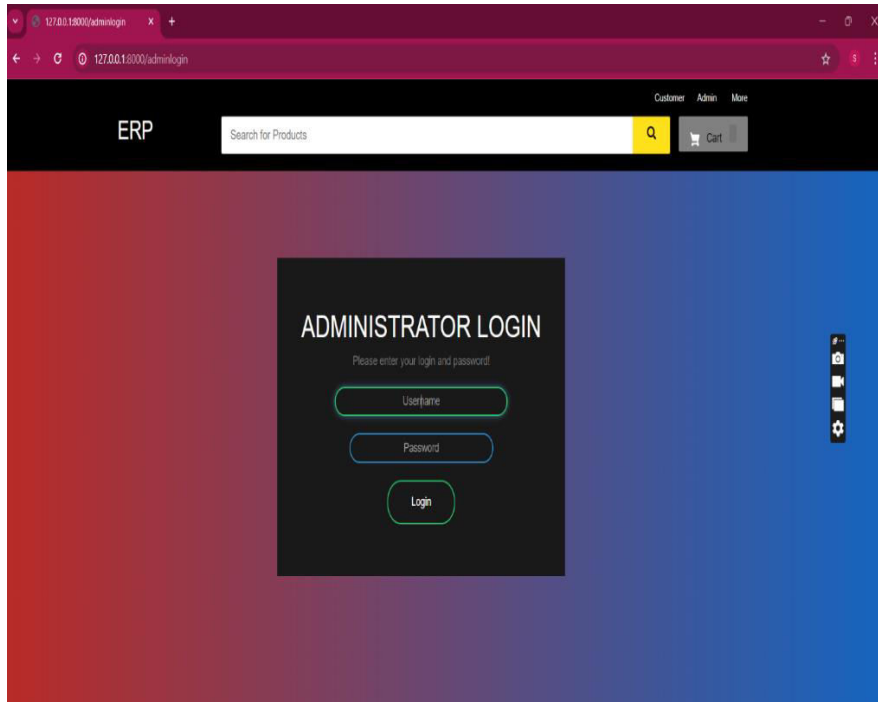
This project has very effective useful for handling day activities in retail sector especially by chapathi maker sellers. All the sort of upgrading can be made through framework at whatever point vital. The framework has been planned in such a way the reports are produced at each and each arrange of the chapathi producer dealer coordinate deals prepare. Actualizing this venture decreases burden due to the manual reports. The upkeep of usually simpler one. The software obtained the number of reports within a time. The software created is attractive and user-friendly. It is highly interactive too. The software appears more flexible, which is completely menu-driven, it gives advantage, as it needs less typing by the user. It maintains data consistency.

SCREENSHOTS

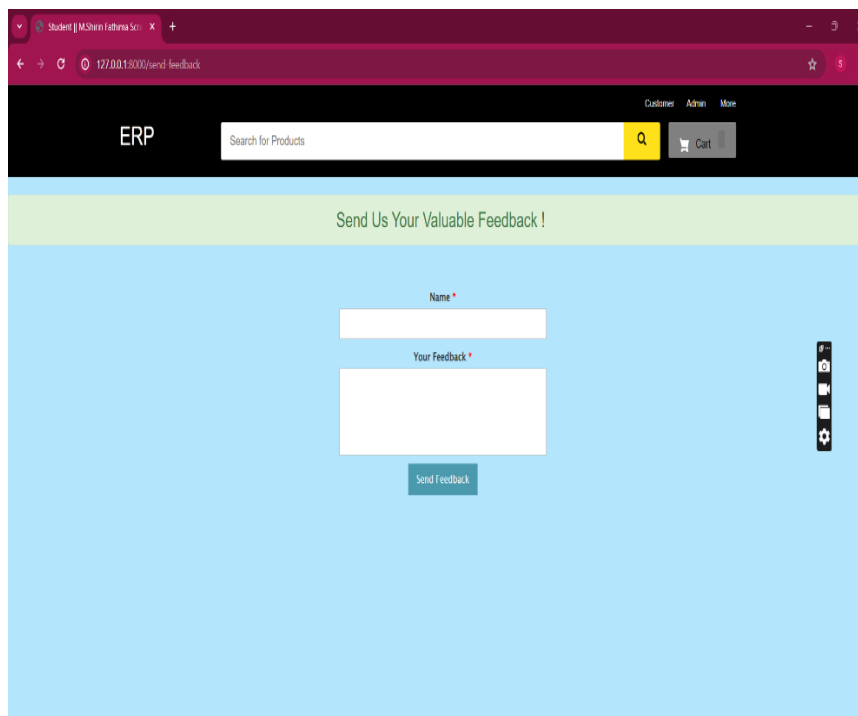
CUSTOMER LOGIN



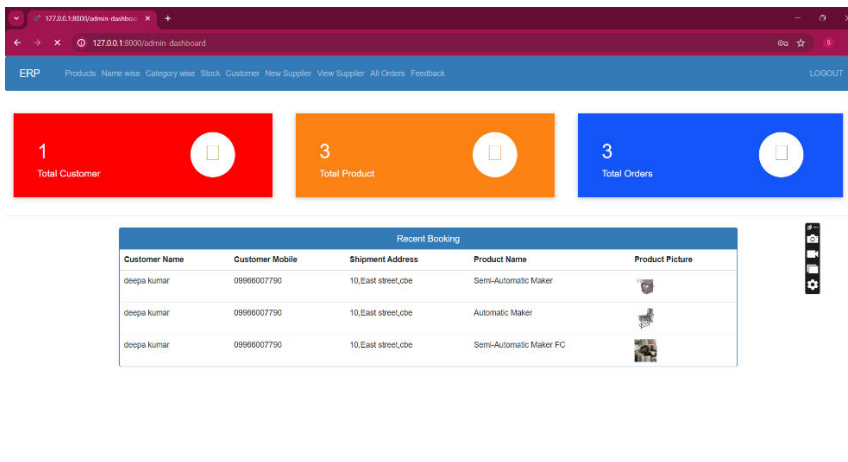
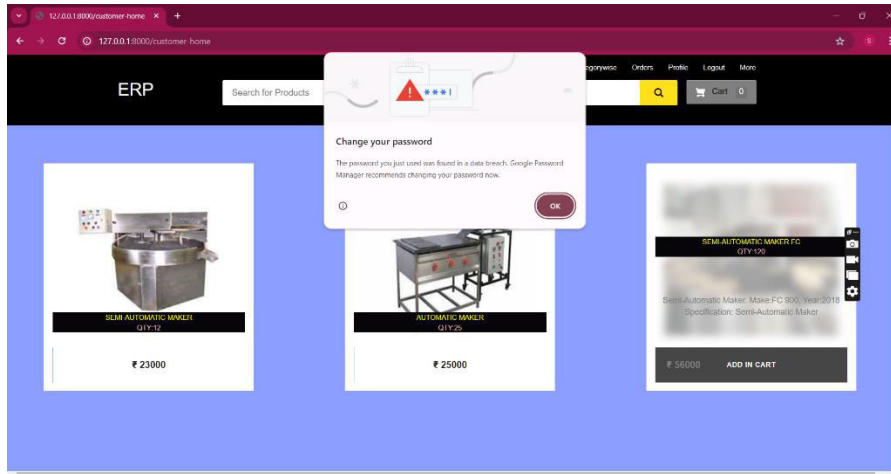
ADMINISTRATOR LOGIN



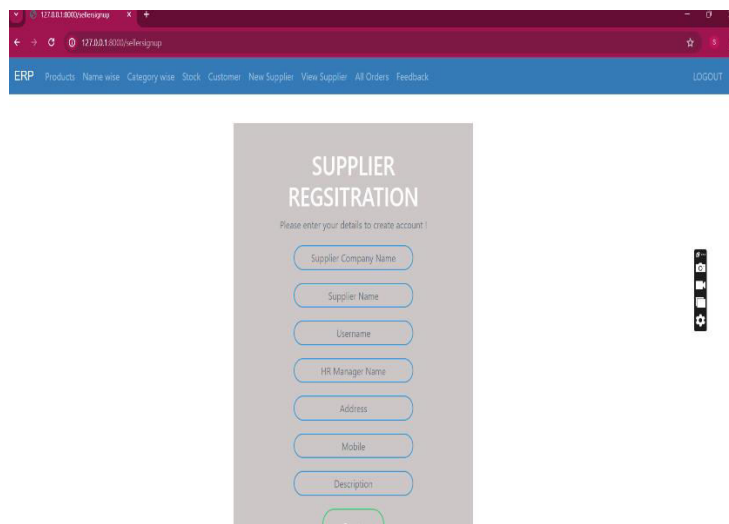
FEEDBACK



PRODUCTS:



SUPPLIER REGSITRATION:



REFERENCES

1. +IP.Naresh Et Al. Automatic Rain-Sensing Wiper System for 4-Wheeler Vehicles. J.of Advancement in Engineering and Technology V3i4.Doi: 10.15297/Jaet.V3i4.05.
2. Basic Electrical Engineering| by V.N.Mittle 1990 Tata Mcgraw-Hill Publishing Company Limited Company Ltd.
3. Engineering Circuit Analysis by William H. Hayt, Jr., Jack E.Kemmerly, Steven M.Durbin in 2002 by Tata Mcgraw-Hill Publishing Company Limited.
4. Tanaka, S., Koyama, T., and Tsunetomo, K.: Wiper Control Apparatus', us Patent 5,917,603, Jun. 29 1999.
5. Stam, J. S., Bechtel, J. H., and Roberts, J. K.: Moisture Sensor and Windshield Fog Detector Using an Image Sensor', us Patent 5,923,027, Jul. 13 1999. 432
6. Choi, K. N.: Omni-Directional Rain Sensor Utilizing Scattered Light Reflection by 1728– 1731.
7. Gormer, S., Kummert, A., Park, S.-B., And Egbert, P.: Vision-Based Rain Sensing with an inVehicle Camera' in Intelligent Vehicles Symposium, 2009 Ieee. Ieee, 2009, Pp. 279– 284.
8. Sugimoto, M., Kakiuchi, N., Ozaki, N., and Sugawara, R.: A Novel Technique for Raindrop Detection on a Car Windshield Using Geometric-Photometric Model' in Intelligent Transportation Systems (Itsc), 2012 15th International Ieee Conference on. Ieee, 2012, Pp. 740–745.
9. Park, J.-H., Kim, M.-H., Im, H.-J., Lee, K.-C., and Lee, S.: Development of Vision Based Control Smart Windshield Wiper System for Intelligent Vehicle' in Sice-Icase, 2006.International Joint Conference. Ieee, 2006, Pp. 4398–4403.
10. Nashashibi, F., De Charrette, R., and Lia, A.: Detection of Unfocused Raindrops on a Windscreen Using Low Level Image Processing' in Control Automation Robotics & Vision (Icarcv), 2010 11th International Conference on. Ieee, 2010, Pp. 1410–1415.
11. Kurihata, H., Takahashi, T., Mekada, Y., Ide, I., Murase, H., Tamatsu, Y. And Miyahara, Innovative Computing, Information and Control, 2006. Icicic'06.First International Conference on, Vol. 2.Ieee, 2006, Pp. 544–547.



INTERNATIONAL
STANDARD
SERIAL
NUMBER
INDIA



INTERNATIONAL JOURNAL OF INNOVATIVE RESEARCH

IN SCIENCE | ENGINEERING | TECHNOLOGY

 9940 572 462  6381 907 438  ijirset@gmail.com



www.ijirset.com

Scan to save the contact details