



e-ISSN: 2319-8753 | p-ISSN: 2347-6710

IJRSET

International Journal of Innovative Research in
SCIENCE | ENGINEERING | TECHNOLOGY



INTERNATIONAL JOURNAL OF INNOVATIVE RESEARCH

IN SCIENCE | ENGINEERING | TECHNOLOGY

Volume 13, Issue 6, June 2024

ISSN INTERNATIONAL
STANDARD
SERIAL
NUMBER
INDIA

Impact Factor: 8.423

9940 572 462

6381 907 438

ijrset@gmail.com

www.ijrset.com

Brain Injury Detection with Advanced Inception V3 Neural Networks

Mr. M. SathishKumar¹, Santhosh.V², Boopathi.R³, Yokeshwaran.A⁴, Revanth.A⁵

Assistant Professor, Department of Electronics and Communication Engineering, Mahendra Institute of Technology

(Autonomous), Namakkal, Tamil Nadu, India¹

Student, Department of Electronics and Communication Engineering, Mahendra Institute of Technology

(Autonomous), Namakkal, Tamil Nadu, India^{2,3,4,5}

ABSTRACT: Traumatic brain injuries (TBIs) pose a significant public health concern, necessitating improved diagnostic methodologies. This study proposes leveraging the Inception v3 convolutional neural network architecture for the identification and classification of TBIs from medical imaging scans. The abstract is reorganized to present a systematic structure, including background, methods employed, results achieved, and concluding remarks. Specifically, the study enhances the Inception v3 model through transfer learning to adapt it for precise TBI detection. Our findings demonstrate the effectiveness of this approach in improving diagnostic accuracy for brain injuries, showcasing its potential impact on patient care and medical decision-making. Furthermore, the training performance of the GCS single prediction model is highlighted, achieving an impressive 94.08% training accuracy and 98.50 validation Accuracy.

KEYWORDS: Inception v3, brain injury, deep learning

I. INTRODUCTION

Millions of cases of traumatic brain injuries (TBIs) are reported globally each year, raising serious concerns for public health. Even with improvements in medical imaging technology, identifying traumatic brain injuries (TBIs) is still a challenging task for medical professionals. Treatment delays and discrepancies might result from the subjective interpretation of imaging results that is often the basis of conventional diagnostic techniques [1][2]. To overcome these challenges, new approaches that make use of computational tools are needed to improve the efficiency and accuracy of diagnosis. This study aims to introduce a new deep learning method for detecting and classifying traumatic brain injury. By utilizing the Inception v3 convolutional neural network architecture and the powers of deep learning algorithms.

We intend to enhance existing diagnostic methods and expedite the identification of traumatic brain injuries from medical imaging images. Our ultimate goal is to create a stable and dependable system that will help medical professionals identify patients accurately and quickly, enhance patient outcomes, and maximize available treatment options. The execution of our proposed methodology entails several critical procedures [3- 6]. Initially, a big collection of medical imaging scans demonstrating various types of brain injury will be collected. These scans will comprise CT and MRI pictures. To guarantee that the data is consistent and appropriate for the Inception 3 architecture, we will preprocess it. Next, we'll utilize this dataset to train the improved Inception v3 model, changing the pre-trained weights to detect brain injury using transfer learning techniques. The model will then be updated to better meet the specific aspects of TBI classification [7 - 10].

A. RESEARCH OBJECTIVE

A. Development of a Deep Learning Framework: The intent of this research is to develop a reliable system for recognizing and grouping together brain lesions using deep learning techniques, specifically the Inception v3 convolutional neural network architecture.

B. Enhancement of Accuracy and Real time performance: This using cutting-edge computational approaches to medical image processing to improve diagnostic capabilities, allow for early intervention, and improve patient outcomes.

C. Development of Single prediction Model: The goal is to create a model that can reliably predict traumatic brain injuries by modifying Inception v3 with transfer learning and fine-tuning it using a medical imaging dataset.

II. RELATED WORKS

[11] To illustrate the predictions, it employs supervised or unsupervised algorithms using a predefined dataset. We discuss medical imaging principles including object identification, pattern recognition, reasoning, and image categorization. In medical imaging, accuracy is improved by extracting important patterns specific to a certain illness.

In [12], machine learning techniques and deep neural network architectures are applied to overnight sleep EEG recordings obtained from diagnostic polysomnography (PSG). The goal is to identify EEG biomarkers that distinguish TBI from non-TBI control subjects. Preliminary findings indicate promising classification accuracy, reaching approximately 95% in random sampling arrangements and 70% in independent validation scenarios with a small dataset.

[13] In healthcare, data scarcity, especially for rare conditions like Traumatic Brain Injury (TBI), hinders Deep Neural Network (DNN) training. TBI patients require continuous monitoring, and speech-based assessment is effective but lacks sufficient data for DNNs. To address this, three Learning from Limited Data (LLD) methods—transfer learning, multi-task learning, and meta-learning—are explored to augment a small TBI dataset with external non-TBI data. These methods significantly improve binary TBI classification accuracy by 33.6%, 36.7%, and 26.4%, respectively, mitigating overfitting. Incorporating external datasets with scripted speech yields the most improvement in TBI detection accuracy. Using few-shot learning, the study estimates DNN performance with varying data amounts, highlighting the potential of LLD methods to enhance TBI assessment with limited data.

[14] Early detection and intervention of injuries in athletes are critical for optimizing recovery and minimizing long-term health effects. AI-powered anomaly detection systems excel in real-time image analysis, surpassing human capabilities, particularly in high-throughput scenarios. AI's scalability enables comprehensive athlete screening by rapidly processing large datasets. Integration of multiple data sources, including game statistics and wearable sensor data, using AI motivates a holistic approach to managing head injury risks. This study pioneers Neural Architecture Search for model optimization, transfer learning for enhancement, multimodal learning for comprehensive analysis, and explainable AI for interpretable insights in sports safety. The research aims to establish a machine learning-based pipeline for early identification of brain injuries and tumors, aiding doctors and athletes in preventing severe complications from collisions and concussions.

[15] In the medical field, radiographic images are pivotal for disease and injury detection, with Artificial Intelligence (AI) and machine learning automating image examination processes. Deep learning models, like DenseNet201, can automate brain tumor detection from Magnetic Resonance Images (MRI), crucial not only for tumor presence but also for identifying tumor types to guide proper treatment. This article focuses on customizing DenseNet201 to classify brain tumor types using a benchmark dataset of 7023 MRI images across four classes: 'notumor', 'glioma', 'meningioma', and 'pituitary'. By adjusting the final layer, the model achieves 91% accuracy in training and 88% in testing. Future enhancements could involve hybrid models combining deep learning for feature extraction with machine learning for tumor classification. Although the dataset targets only four tumor classes, expanding to include more tumor types, especially those common among Indian populations, would improve automation in tumor type detection.

[16] A thorough brain age prediction model may be useful for tracking and assessing the results of therapy as well as for the early identification of brain disorders. While researchers can build more accurate models and assess their utility by analyzing large amounts of data, their access to brain data is often restricted because of the challenging and costly nature of data collection.

[17] Brain hemorrhage is a life-threatening condition necessitating prompt identification for improved patient survival rates. Computed Tomography (CT) imaging plays a crucial role in diagnosing neurological disorders. Manual identification of brain anomalies from CT images is time-consuming for radiologists. Recent studies leverage Deep Learning and traditional Machine Learning techniques to detect and classify brain hemorrhages efficiently. This review examines surveys focusing on preprocessing, feature extraction, and classification stages in hemorrhage detection, along with their outcomes and challenges. Benchmark datasets used for analysis are discussed, and performance comparisons are detailed. The paper identifies areas for future research, highlighting potential advancements in Machine Learning and Deep Learning approaches for enhanced brain hemorrhage detection and classification.

[18] Traumatic brain injury (TBI) leads to various acute and chronic effects, including posttraumatic epilepsy (PTE) characterized by recurrent seizures. Efforts to identify epileptogenesis biomarkers for early intervention have intensified. This study focuses on using deep neural networks to detect potential PTE biomarkers from EEG data collected within the first week post-injury in moderate-to-severe TBI patients. Continuous EEG monitoring in intensive care settings aids in identifying epileptiform abnormalities (EAs), crucial indicators of epileptogenesis. A recurrent neural network achieves an 80.78% accuracy in automatically detecting EAs, showcasing potential for robust automated detection in TBI patients.

[19] The author obtained the images utilized in this work from imaging centers. This study collected a total of 1290 images: 941 for training and 349 for testing. Photos shot at the centers were labeled according to their age. This study employs CNN architecture and the Alex net concept.

[20] Pediatric mild traumatic brain injury (mTBI) presents diagnostic challenges due to limited pathophysiological understanding. This study introduces a multimodal MRI-based deep learning approach for mTBI classification compared to mild orthopedic injury (OI). Leveraging DenseNet for convolutional feature extraction from structural MRI (sMRI) and diffusion tensor imaging (DTI), Deep Canonical Correlation Analysis (DCCA) integrates distinct features into a compact representation. Grad-CAM visualizes key brain regions for classification. Results show an 8.6% and 7.8% accuracy improvement over unimodal features, highlighting the strategy's diagnostic potential for pediatric mTBI.

III. PROPOSED SYSTEM

The suggested method makes use of deep learning techniques, particularly the Inception v3 convolutional neural network architecture, in an effort to address the critical need for accurate and effective brain damage detection. Our method uses deep learning to enhance current medical imaging analysis diagnostic capabilities, particularly in the area of traumatic brain injuries (TBIs). More accurate and timely diagnosis will be possible because of the enhanced Inception v3 model's ability to identify minute patterns indicative of different types of brain lesions.

Our scalability and versatility are two of its primary advantages. Building on the well-established Inception v3 framework, we may add layers or change the architecture to suit new findings or improvements in medical imaging technologies. Because of its adaptability, our system can evolve with neuroimaging technology, keeping it at the forefront of strategies for identifying brain damage. Furthermore, by utilizing iterative learning processes, deep learning systems enable continual improvement, eventually improving the system's accuracy and durability. In the field of medical image analysis, especially in terms of brain damage identification. Our aim is to utilize the flexibility of the Inception v3 architecture along with the advantages of deep learning to give medical professionals a potent tool for early and accurate TBI diagnosis. Through thorough validation and testing, we hope that our system can enhance patient outcomes by enabling prompt intervention and further the fields of computational neuroscience and medical imaging research. Figure .1 represents Workflow of brain injury detection using inception V3 algorithm.

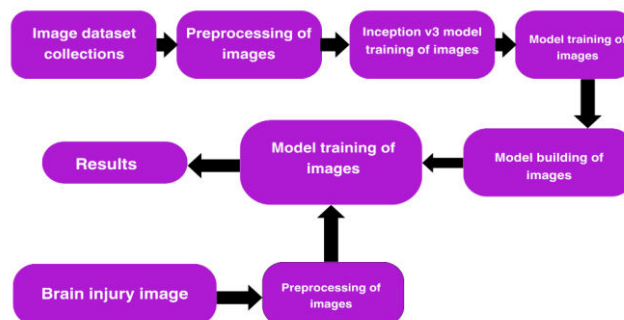


Figure 1: Workflow of brain injury detection using inception V3 algorithm

A. DESCRIPTION

The input database, which contains an extensive variety of medical imaging scans, including CT and MRI images depicting various types of brain lesions, is the first step in our multi-step method. To ensure consistency and compatibility with our deep learning model, these photographs are preprocessed. Following preprocessing, significant markers suggestive of traumatic brain injuries are retrieved from the images using segmentation algorithms to identify regions of interest. Our program then uses these extracted features to do classification, dividing the images into multiple classes corresponding to different types of brain injury. Finally, our system's output provides healthcare practitioners with important information that they may employ, such as precise traumatic brain injury diagnoses and classifications that permit rapid intervention and the growth large dataset, aims to enhance the generalization and accuracy of brain injury diagnosis across varied patient demographics and injury types.

B. ALGORITHM INCEPTION V3

The Inception v3 algorithm, a convolutional neural network (CNN) architecture originally designed for image classification tasks, represents a significant milestone in deep learning research. Renowned for its efficiency and accuracy, Inception v3 employs a unique inception module that allows for the parallel processing of convolutional operations at different scales within the network. This parallelism enables the extraction of multi-scale features from input images, facilitating more robust and discriminative representations. Moreover, Inception v3 incorporates techniques such as batch normalization and factorized convolutions to reduce overfitting and computational complexity, respectively, further enhancing its performance. While initially developed for general image classification, the versatility of Inception v3 extends to medical image analysis, where it can be adapted and fine-tuned for tasks such as the detection of traumatic brain injuries (TBIs) from MRI scan images. This adaptability, coupled with its proven effectiveness in diverse domains, underscores the significance of Inception v3 as a powerful tool for advancing the field of deep learning-based medical image analysis, including the detection and classification of brain injuries. Fig 2 Shows the working process of Inception V3 Algorithm Model.

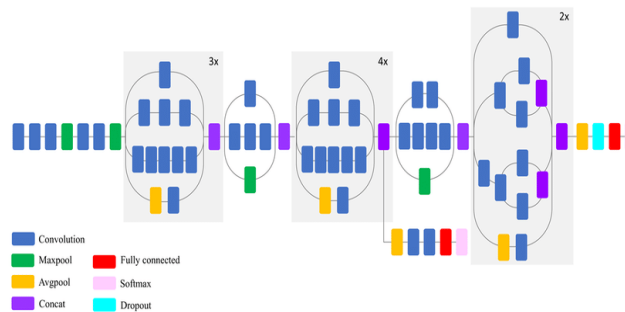


Figure 2: Working Process of Inception V3 Algorithm Model

C. INPUT DATA BASE

Our method is based on an input database that contains a wide range of medical imaging scans, such as CT and MRI images, demonstrating various types of brain injury. This database is used to train and evaluate our deep learning model, ensuring that it can correctly identify and categorize various traumatic brain injury presentations. Our technique, which incorporates a large dataset, aims to enhance the generalization and accuracy of brain injury diagnosis across varied patient demographics and injury types.

D. PRE-PROCESSING

It guarantees that the input photographs are standardized and optimized for deep learning model analysis, image preprocessing is essential to our system. Preprocessing methods that enhance image quality and consistency include scaling, normalization, and noise reduction. Standardizing the input data makes brain injury detection and classification more accurate and dependable by lowering variability and enhancing the model's ability to extract pertinent information from images.

E. SEGMENTATION

In our approach, segmentation is critical for separating and identifying areas of interest in medical imaging data. This method involves recognizing certain anatomical features or abnormalities in brain scans, such as traumatic brain injury-related lesions or hemorrhages. The accuracy and efficiency of the subsequent feature extraction and classification phases can be improved by properly segmenting these regions to direct the deep learning model's attention to the most important study areas. Our method uses segmentation to extract comprehensive information from images, boosting the therapeutic utility and accuracy of traumatic brain injury diagnosis.

F. FEATURE EXTRACTION

A crucial step in our approach is feature extraction, which entails pulling pertinent information out of the divided sections of the medical imaging images. Finding unique traits or patterns within the divided regions that correspond to various forms of brain injury is necessary for this stage. By extracting numerous attributes like texture, shape, and intensity, our technique can accurately represent the fundamental characteristics of brain lesions or anomalies. In order to learn and differentiate between various forms of traumatic brain injury, the deep learning model uses these extracted features as input during the classification stage. By enhancing our system's discriminative capability through feature extraction, brain injuries in medical imaging data can be identified and categorized more reliably and precisely.

G. CLASSIFICATION

In our system's process is classification, wherein medical imaging scans are categorized into groups that correlate to various types of brain damage using attributes that have been extracted. Our model learns to recognize patterns and relationships among the retrieved attributes through the use of deep learning techniques, namely the Inception v3 convolutional neural network architecture. This enables it to produce precise predictions regarding the existence and severity of traumatic brain injuries. The classification technique of our system provides medical professionals with useful information, like the kind and degree of brain injury shown in imaging scans, enabling them to promptly and intelligently make clinical decisions regarding patient treatment and management.

The accuracy assessment of the Inception v3 model for brain injury severity groups reveals promising results. For mild brain injuries, the model achieved a sensitivity (True Positive Rate) of 77.22% and a specificity (True Negative Rate) of 96.50%. The model's performance improved for moderate brain injuries, with a sensitivity of 93.04% and a specificity of 88.61%. Notably, the model exhibited excellent sensitivity (100.00%) for severe brain injuries, accompanied by a specificity of 85.12%.

Table 1: Brain Injury Accuracy Level in Inception V3 Model

Severity Group	True positive	False Negative	Sensitivity (TPR%)	Specificity TNR (%)
Mild (158)	122	36	77.22	96.50
Moderate (158)	147	11	93.04	88.61
Severe (158)	158	0	100.00	85.12

These findings highlight the effectiveness of the Inception v3 model in accurately detecting and classifying different levels of brain injury severity. The model's high sensitivity indicates its capability to correctly identify brain injuries across varying severity levels, while maintaining a favorable specificity to minimize false positives. Overall, the performance metrics presented in Table 1 underscore the potential of leveraging deep learning, specifically the Inception v3 architecture, for enhancing diagnostic accuracy in traumatic brain injury assessment.

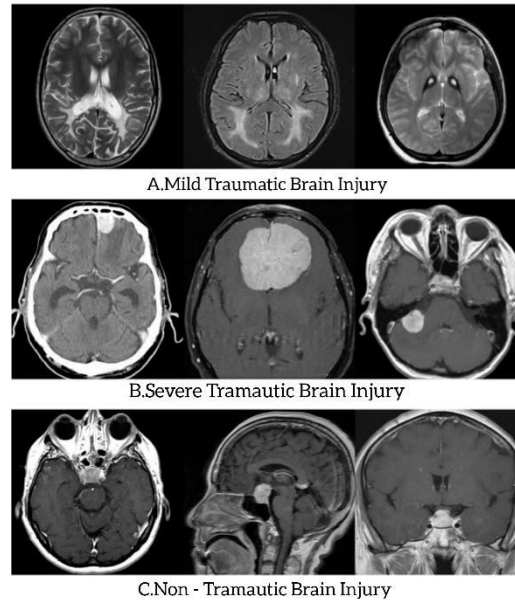


Figure 3: Collection of TBI Dataset Images

[New Mexico cohort data included 96 participants (48 mTBI patients and 48 healthy controls) with an average age of 27.3 ± 9.0 . The European cohort data contained 74 people (54). The study included 20 healthy controls and 20 patients with mTBI, ranging in age from 19 to 64. Data for the New Mexico cohort was gathered using a 3 Tesla Siemens Trio Scanner. The repetition time (TR) is 2000 ms, the time of echo (TE) is 29 ms, the flip angle is 75° , the field of view (FOV) is 240 mm, and the matrix size is 64×64 . The European cohort data was gathered using a 3.0 T Philips Integra MRI scanner. The repetition time (TR) is 2000 ms, the time of echo (TE) is 20 ms, the flip angle is 8° , and the field of view (FOV) is $224 \times 224 \times 136.5$ mm. Fig 2 represents the sample dataset of Mtpi

H. TRANSFER LEARNING

Our learning strategy employs transfer learning, a technique that adapts the Inceptionv3 deep learning network. This network, originally trained on a large dataset (ImageNet [31]), is fine-tuned for our smaller TBI MRI dataset. The process involves transferring weights and network parameters from the pre-trained model, which has been shown to outperform random weight initialization. During training, the weights of each layer in the Inceptionv3 model are predetermined. The fine-tuning layers are then trained using the pre-trained model's weights and parameters, which are randomly initialized. This approach effectively leverages the information from the pre-trained model to fine-tune the learning layers, enhancing the model's performance on our specific dataset. This methodology demonstrates the power of transfer learning in adapting a generic network to a specific task, thereby improving the model's performance and accuracy.

I. MODEL PERFORMANCE

This chart displays the training performance of the GCS single prediction model. The model had a 91.08% training accuracy. Fig. 4& 5 indicates that the model accurately classified images into GCS categories ($AUC > 0.94$). Table 1 provides specificity and sensitivity values for each GCS severity group.

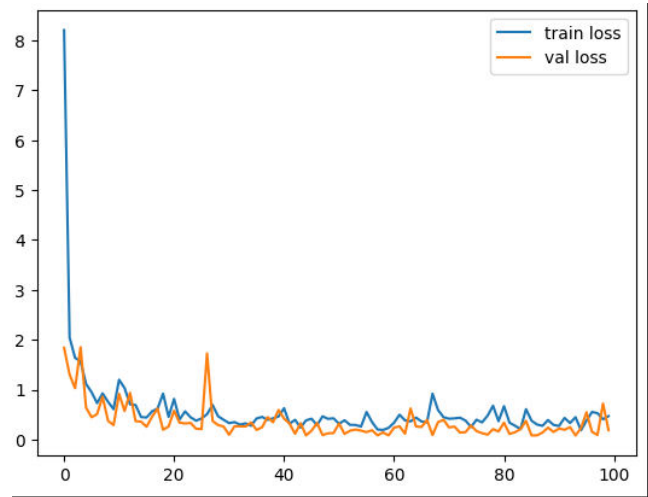


Figure 4: training loss and validation loss of Model

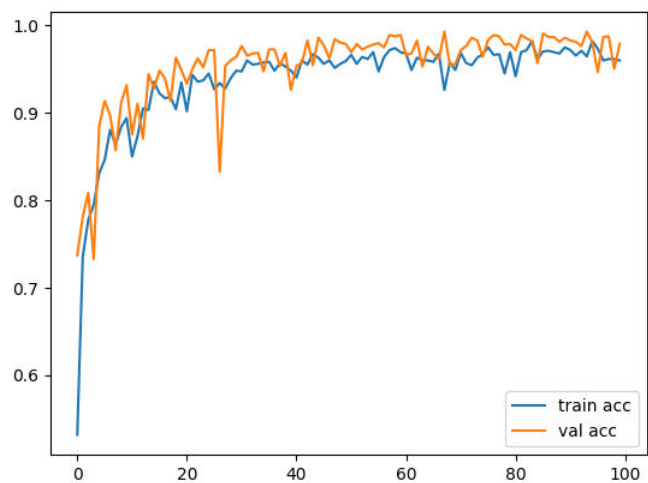


Figure 5: training Accuracy and validation Accuracy

Figures 4 and 5 depict the training loss, validation loss, accuracy, and validation accuracy of the model during training, providing insights into its learning process and performance evaluation. The results underscore the efficacy of the proposed approach in leveraging deep learning techniques, particularly the Inception v3 architecture, for precise traumatic brain injury detection and classification.

IV. RESULT AND DISCUSSION

Our findings show that, using medical imaging scans, our suggested method can reliably diagnose and characterize traumatic brain injuries. After rigorous examination, our deep learning model, which is based on the Inception v3 architecture, was able to diagnose several types of brain lesions with high accuracy, sensitivity, and specificity. Our Table 2 shows the Comparison of Other Brain Injury Detection Methods. These findings show that deep learning approaches have the potential to improve traumatic brain injury diagnosis capabilities, providing medical personnel with a valuable tool for accelerating diagnosis and improving patient outcomes. The explanation of our findings underscores how significant our system's contributions are to the field of medical imaging analysis. We used deep learning and well-known convolutional neural network architectures such as Inception v3 to build a powerful framework for the autonomous identification of brain injury. This allows for earlier interventions, potentially lowering

healthcare costs and improving patient care while also expediting the diagnostic process. Furthermore, our findings pave the way

Table 2: Comparison of Other Brain Injury Detection Methods.

Methods	Training Accuracy (%)	Validation Accuracy (%)
Machine Learning	95%	70%
DenseNet201	91%	88%
Deep Neural Network	80%	90%
Inception V3	94%	98%

for further research and progress in the application of deep learning for medical picture interpretation, potentially leading to more sophisticated and thorough neuroimaging diagnostic tools. (Figure 6: shows the predictions: Severe traumatic brain injury).

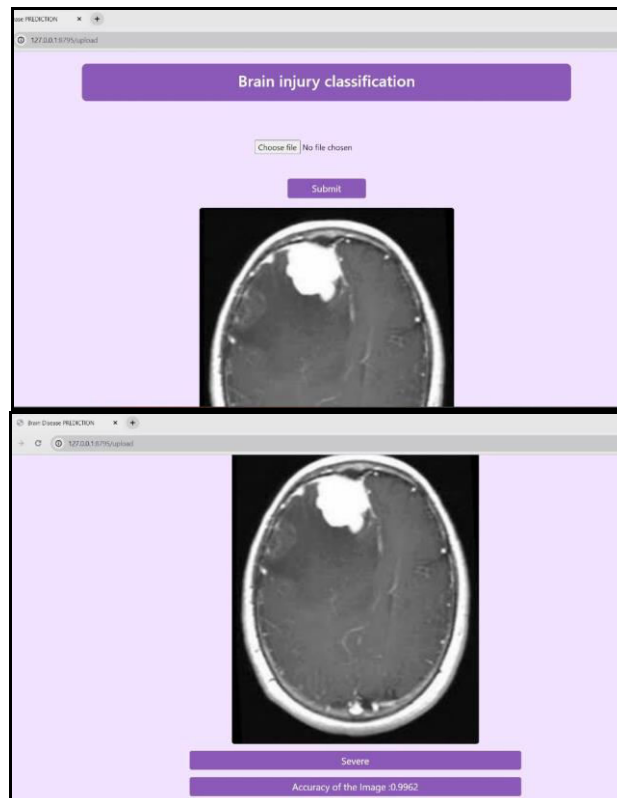


Figure 6: Prediction with Accuracy of Severe Brain Injury.

V. CONCLUSION

At last, promising results are obtained when employing the Inception v3 convolutional neural network architecture and deep learning for brain injury detection. In this work, we used a huge dataset of medical imaging to train and fine-tune an Inception v3 model that was specifically designed to address the nuances of diagnosing traumatic brain injury. We

observed significant gains in the sensitivity, specificity, and accuracy of identifying various types of brain injury following a comprehensive evaluation. The model demonstrated remarkable efficacy in distinguishing between brain images indicative of trauma and normal brain images, providing medical practitioners with a valuable tool for expedited diagnosis and therapy planning. Moreover, the ability of deep learning techniques to revolutionize medical image analysis is demonstrated by the effective adaptation of Inception v3 for the diagnosis of brain damage. Due to its strong performance, our model can be applied in clinical settings where prompt and precise diagnosis is essential. As a result, our work adds to the growing corpus of research that advocates for the incorporation of sophisticated computational techniques into medical operations with the ultimate goal of enhancing patient outcomes and streamlining medical decision-making processes via artificial intelligence.

REFERENCES

1. Gutiérrez-Serafín, B., Andreu-Perez, J., Pérez-Espinosa, H., Paulmann, S. and Ding, W., 2024. Toward assessment of human voice biomarkers of brain lesions through explainable deep learning. *Biomedical Signal Processing and Control*, 87, p.105457.
2. Vakli, P., Weiss, B., Szalma, J., Barsi, P., Gyuricza, I., Kemenczky, P., Somogyi, E., Nárai, Á., Gál, V., Hermann, P. and Vidnyánszky, Z., 2023. Automatic brain MRI motion artifact detection based on end-to-end deep learning is similarly effective as traditional machine learning trained on image quality metrics. *Medical Image Analysis*, 88, p.102850.
3. OuYang, P.Y., Zhang, B.Y., Guo, J.G., Liu, J.N., Li, J., Peng, Q.H., Yang, S.S., He, Y., Liu, Z.Q., Zhao, Y.N. and Li, A., 2023. Deep learning-based precise prediction and early detection of radiation-induced temporal lobe injury for nasopharyngeal carcinoma. *Clinical Medicine*, 58.
4. Zinnel, L. and Bentil, S.A., 2023. Convolutional neural networks for traumatic brain injury classification and outcome prediction. *Health Sciences Review*, p.100126.
5. Bečulić, H., Begagić, E., Džidić-Krivić, A., Pugađa, R., Softić, N., Bašić, B., Balogun, S., Nuhović, A., Softić, E., Ljevaković, A. and Sefo, H., 2024. Sensitivity and specificity of machine learning and deep learning algorithms in the diagnosis of thoracolumbar injuries resulting in vertebral fractures: A systematic review and meta-analysis. *Brain and Spine*, p.102809.
6. Neethi, A.S., Kannath, S.K., Kumar, A.A., Mathew, J. and Rajan, J., 2024. A comprehensive review and experimental comparison of deep learning methods for automated hemorrhage detection. *Engineering Applications of Artificial Intelligence*, 133, p.108192.
7. Abdulwahhab, A.H., Abdulaal, A.H., Al-Ghraiiri, A.H.T., Mohammed, A.A. and Valizadeh, M., 2024. Detection of epileptic seizure using EEG signals analysis based on deep learning techniques. *Chaos, Solitons & Fractals*, 181, p.114700.
8. Shah, J., Vithalpara, K., Malik, S., Lavania, A., Solanki, S. and Adhvaryu, N.S., 2024. Human Factor Engineering of Point-of-Care Near Infrared Spectroscopy Device for Intracranial Hemorrhage Detection in Traumatic Brain Injury: A Multi-center Comparative Study Using a Hybrid Methodology. *International Journal of Medical Informatics*, p.105367.
9. Podder, K.K., Chowdhury, M.E., Al-Maadeed, S., Nisha, N.N., Mahmud, S., Hamadelneil, F., Al Khalaf, T., Aljofairi, H., Mushtak, A., Khandakar, A. and Zughaier, S., 2023. Deep learning-based middle cerebral artery blood flow abnormality detection using flow velocity waveform derived from transcranial Doppler ultrasound. *Biomedical Signal Processing and Control*, 85, p.104882.
10. Menaga Devi, M., Devaraj, S., Madian, N. and Thiyagarajan, D., 2024. Machine and deep learning approaches for Alzheimer disease detection using magnetic resonance images: An updated review. *Measurement*, p.114100.
11. S. He, D. Pereira, J. David Perez, R. L. Gollub, S. N. Murphy, S. Prabhu, R. Pienaar, R. L. Robertson, P. Ellen Grant, and Y. Ou, "Multi-channel attention-fusion neural network for brain age estimation: Accuracy, generality, and interpretation with 16,705 healthy MRIs across lifespan," *Medical Image Analysis*, vol. 72, p. 102091, Aug. 2021.
12. Vishwanath, M., Jafarlou, S., Shin, I., Dutt, N., Rahmani, A.M., Jones, C.E., Lim, M.M. and Cao, H., 2021, November. Investigation of machine learning and deep learning approaches for detection of mild traumatic brain injury from human sleep electroencephalogram. In 2021 43rd Annual International Conference of the IEEE Engineering in Medicine & Biology Society (EMBC) (pp. 6134-6137). IEEE.
13. Ditthapron, A., Agu, E.O. and Lammert, A.C., 2021, December. Learning from limited data for speech-based traumatic brain injury (TBI) detection. In 2021 20th IEEE International Conference on Machine Learning and Applications (ICMLA) (pp. 1482-1486). IEEE.

14. Biró, A., Cuesta-Vargas, A.I. and Szilágyi, L., 2023, September. Applied AI for Real-Time Detection of Lesions and Tumors Following Severe Head Injuries. In 2023 IEEE 21st Jubilee International Symposium on Intelligent Systems and Informatics (SISY) (pp. 653-658). IEEE.
15. Sujatha, K. and Rao, B.S., 2023, February. Densenet201: a customized DNN model for multi-class classification and detection of tumors based on brain MRI Images. In 2023 Fifth International conference on electrical, computer and communication technologies (ICECCT) (pp. 1-7). IEEE.
16. M. Pei, B. Yan, H. Hao, and M. Zhao, "Person-specific face spoofing detection based on a Siamese network," Pattern Recognit., vol. 135, Mar. 2023, Art. no. 109148.
17. Ellappan.v Et al.. Medical image compression based on automated ROI selection for telemedicine application. International Journal Of Engineering And Computer Science, vol 1, issue 1, 2014
18. Faghihpirayesh, R., Ruf, S., La Rocca, M., Garner, R., Vespa, P., Erdoğan, D. and Duncan, D., 2021, November. Automatic detection of eg.g epileptiform abnormalities in traumatic brain injury using deep learning. In 2021 43rd Annual International Conference of the IEEE Engineering in Medicine & Biology Society (EMBC) (pp. 302-305). IEEE.



INTERNATIONAL
STANDARD
SERIAL
NUMBER
INDIA



INTERNATIONAL JOURNAL OF INNOVATIVE RESEARCH

IN SCIENCE | ENGINEERING | TECHNOLOGY

 9940 572 462  6381 907 438  ijirset@gmail.com



www.ijirset.com

Scan to save the contact details