



e-ISSN: 2319-8753 | p-ISSN: 2347-6710

IJIRSET

International Journal of Innovative Research in
SCIENCE | ENGINEERING | TECHNOLOGY



INTERNATIONAL JOURNAL OF INNOVATIVE RESEARCH

IN SCIENCE | ENGINEERING | TECHNOLOGY

Volume 13, Issue 3, March 2024

ISSN INTERNATIONAL
STANDARD
SERIAL
NUMBER
INDIA

Impact Factor: 8.423

Blind Assistance System

Ajay Jadhav, Shrinivas Kamble, Vaishnavi Hingmire, Pradnya Nisal, Prof. Suresh G. Shinde

Department of Computer Engineering, SMT Kashibai Navale College of Engineering, Vadgaon, Pune, India

ABSTRACT- According to the World Health Organisation, 250 million people have some form of vision impairment, and about 40 million people are blind. They frequently run into a lot of issues, especially when navigating. To meet their everyday requirements, they typically rely on help from others. Therefore, implementing a technology solution to aid them is a rather challenging task. For the benefit of persons who are blind, numerous technologies have been developed. As an illustration, we would like to develop a machine learning system that is integrated and enables blind people to distinguish and classify items in real-time while also providing voice feedback and distance. Which also generates warnings, whether they are very near or far from the thing?

KEYWORDS: Blind Assitance, Machine Learning.

I. INTRODUCTION

Navigating through life involves various activities such as work, education, shopping, and more, and eyesight play a crucial role in facilitating these tasks by making it easier to move from one place to another. Hence, it can be generally acknowledged that vision is essential for effective navigation. In well-known surroundings, like our homeroom or even our business, it is comparatively simple to envisage moving around without eyesight. However, navigating strange environments might be challenging. [1]Blindness is a prevalent disability, with an increasing number of people affected in recent decades. Partially blind people have various vision problems, while completely blind people have no vision at all. The mission of the system is to assist visually impaired people, promoting their independence and self-reliance. The system includes glasses that enable reading, studying, and learning from printed text or images, particularly useful in the field of education. visually impaired individuals due to their disability.[2] For humans to engage with their surroundings, vision, and touch are crucial sensory organs. One of the most important challenges to regaining the ability to carry out daily tasks for blind amputees is how to swiftly and intuitively relay environmental information to them .[3] For a person with blindness, the lack of visual input can lead to difficulties in realizing and understanding the things around them. They may rely on sharp observation and hearing to form mental images, but may still struggle to remember or identify objects. This can result in the need for assistance from others. Finding directions can also be a challenge, leading to inconvenience and potential reliance on guides.[4-5] Blind and visually impaired individuals face challenges in daily activities, including lower work-force participation rates and higher risks of falls. Computer vision technology has potential to assist, but there is currently no effective approach for conveying environmental information. Improving information transfer rate (ITR) is important for facilitating spatial cognition. Public transport management systems (PTMS) are helpful for most passengers, but useless for visually impaired individuals due to their disability.[6] As of the end of 2016, there were approximately 7.338 billion people in the world, with 285 million being visually impaired according to WHO statistics. Of the visually impaired individuals, 246 million had amblyopia and 39 million were blind, representing 4.25% of the world's total population.[7-10]An estimated 285 million visually impaired people worldwide need assistance with navigation, so there is ongoing research into Blind Assistance Systems, including Electronic Travel Aids (ETAs), Position Locator Devices (PLDs), bionic eyes, and artificial vision systems. Some of these devices, such as ultrasonic sensors, have limitations in detecting obstacles, while others rely on GPS technology, which is not always efficient. Recent research has focused on the stereo disparity concept, which estimates depth using stereo cameras and offers a feasible, cost-effective, and independent navigation system for the blind.

II. LITERATURE SURVEY

In [1], The authors have proposed an intelligent voice assistance system. The Raspberry Pi 3 Model B+ was chosen as the primary component for the prototype due to its affordable cost, compact dimensions, and seamless integration capability. The design features a camera, obstacle avoidance sensors, and advanced image processing algorithms that enable object detection and classification. The combination of the camera and ultrasonic sensors assists in calculating the distance between the user and any obstacles. Furthermore, the system incorporates an image-to-text converter that generates audio feedback. The drawback of this system is that it has a lot of hardware requirements and does not use real-time data video for feedback but rather uses images.

In [2], The system under consideration employs the SSD algorithm and TensorFlow, which function at two levels to enable the recognition and localization of objects while also measuring the distance between the user and the object. This study proposes a novel framework that harnesses the power of AI to create a more user-friendly system specifically designed for individuals with visual impairments. The drawback of this system is that it uses an SSD object detection algorithm which is slow compared to YOLO and R-CNN so this affects the accuracy and response time of the model.

In [3], authors have given one potential solution for aiding visually impaired individuals through the use of a machine learning algorithm. To access this algorithm, data input is gathered using an Image Classification technique. This involves capturing images of objects in the surroundings of the visually impaired person through a camera, which can accurately detect objects within a certain distance. The images are then converted into audio signals, providing a convenient means of assistance for those with visual impairments. The drawback of this system is that it uses ML algorithms which are not as efficient as Deep Learning algorithms as the data set used is not large and they are using image classification which takes time and is not very efficient.

In [4], The authors have created a device called Stereo Pilot. It is a target location system that can be worn as a wearable device, aimed at improving the spatial cognition of people with visual impairments (BVI). It involves a head-mounted RGB-D camera that captures 3D spatial information of the surrounding environment, which is then used to create navigation cues. These cues are transmitted through a special type of 3D sound using spatial audio rendering (SAR) technology, allowing for the sound orientation to be discerned based on human sound localization instincts. The drawback of this system is that it is a wearable device and is not cost-effective. Everyone including visually impaired people might not be able to afford it and also it is very complex to understand its working.

In [5], The system being proposed utilizes Bluetooth Low Energy (BLE) technology for both location and communication purposes, along with a mobile application for user interaction with their smartphone. BLE beacons are strategically placed on buses and at bus stops, and the mobile application can track their movements in real time, providing users with necessary information via spoken instructions. This information includes the transportation line, destination, name of the next stop, and current location. With this information, users can select the correct bus in advance and ensure they disembark at the intended destination stop. The drawback of this system is that it is solely based on transportation and not all day-to-day help for visually impaired people. It could help in traveling to their desired destination but not guide them at every step and detect objects in front of them.

The use of trained guide dogs with a walking cane to avoid obstacles is a traditional technique that has been used for decades to help the blind and visually impaired. The innovative adaptive footwear and eyewear suggested in [6] let blind people move around safely. To detect things at various heights, ultrasonic transducers are installed on each shoe. The eyewear is equipped with a buzzer at one of the temples and two ultrasonic transducers located centrally above the bridge.

The cane suggested in [7] employs the Camshaft Position Sensor (CMP) compass sensor 511 and a ping ultrasonic sensor to detect potholes and hitches. This system's drawback is that the CMP compass sensor is sensitive to any stray magnetic fields and is impacted by any nearby iron items. Although it offers long-distance navigation, it is useless for indoor navigation. Earlier, sensor-based approaches only served to detect objects, not to identify them. As a result, image processing shows to be a useful technique for dealing with these circumstances.

A stereo image processing system for the blind consists of a helmet-mounted wearable computer, stereo cameras that serve as vision sensors, and stereo earbuds. The vision sensors record an image of the environment in front of the visually impaired. To aid with navigation, the processed photos highlight key elements in the scene in front of the camera. Stereo cameras are utilised to incorporate the distance information [8].

This system takes time to process information, so it cannot be said to be running or functioning instantly. The most popular method for object recognition is one based on the Haar Cascade. Using a supervised method, this divides the entire image into significant and non-significant groups [9].

III. PROPOSED SYSTEM

1. The system is set up so that an android application, presuming you're using one, would record real-time frames and transfer them to a networked server running on a laptop, where all the computations happen. 2. A pre-trained SSD

identification model trained on COCO DATASETS will be utilised by the laptop-based server. The output class will then be tested and identified using an accuracy metric.

3. The class of the object will be transformed into default voice notes after testing with the aid of voice modules, and assistance will then be delivered to the blind victims.

4. We have utilised an alarm system that calculates estimates in addition to item detection. It will also produce voice-based outputs in addition to distance units depending on whether the Blind Person is in close proximity to the frame or is far away in a safer location.

System Flow Chart:

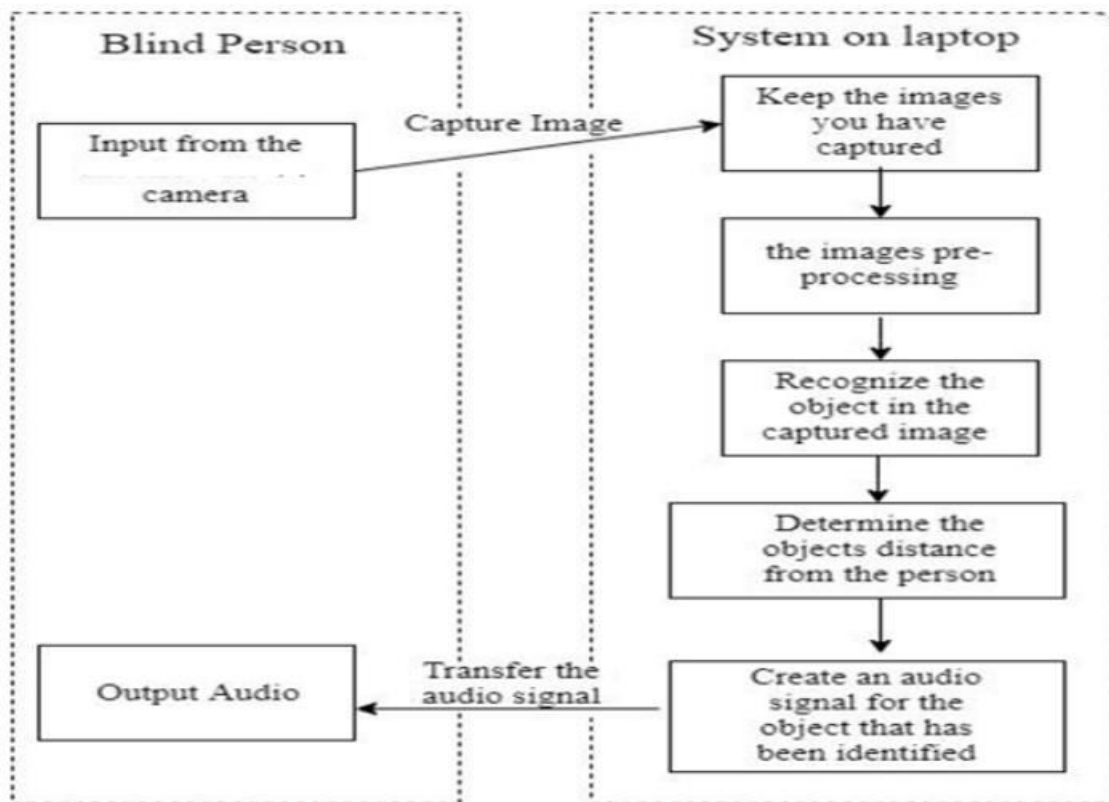


Fig: System Flow

1. Input Image: Here we can upload the Input Image.
2. Image Pre-processing:
In this step we will applying the image pre-processing methods like grey scale conversion, image noise removal.
3. Image Feature Extraction:
In this step we will applying the image pixel extraction methods to remove the image features from image.
4. Image Classification:
In this stage we will applying the picture classification methods to distinguish the contaminated region and safe area from features.
5. Result:
In this step will show the final result detection result.

Algorithm

- YOLO takes an input image and divides it into a grid.
- The image is divided into a grid of cells, and each cell is responsible for predicting objects located within it.
- For each bounding box, YOLO predicts class probabilities for a fixed number of object classes. These probabilities indicate the likelihood of the detected object belonging to each class.

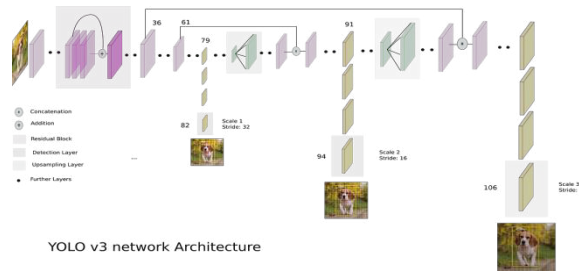
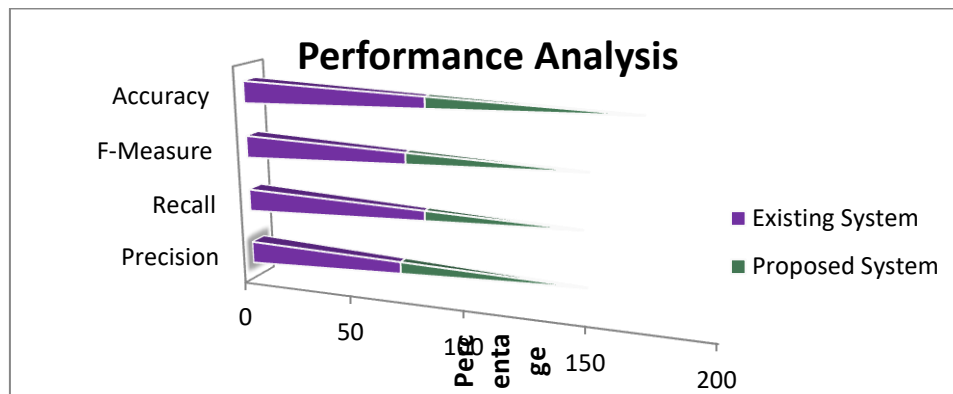


Figure 2. Yolo Working

IV. RESULTS AND DISCUSSION



Parameters	Existing system	Proposed System
Precision	69.05	79.19
Recall	81.44	63.64
F-Measure	75.11	79.31
Accuracy	81.02	89.11

V. CONCLUSION

The primary goal of the suggested system is to help those who are blind by giving them a sense of their surroundings. This sense of their surroundings helps them avoid obstacles and move from one place to another. The objective of offering a straightforward, practical, and helpful solution is accomplished. The suggested method has good speed and accuracy for detecting items in the immediate area. It efficiently identifies things in both indoor and outdoor settings. The system can successfully identify the many things that are present in the immediate surroundings and convey that information to the user through headphones or speakers. The suggested system is evaluated for object detection in three different environments: indoors, outdoors, and objects more than 10 meters from the camera. The system has the ability to recognise items in the immediate area and output audio to the user.

REFERENCES

- [1] R. R. Varghese, P. M. Jacob, M. Shaji, A. R. E. S. John and S. B. Philip, "An Intelligent Voice Assistance System for Visually Impaired using Deep Learning," 2022 International Conference on Decision Aid Sciences and Applications (DASA), Chiangrai, Thailand, 2022, pp. 449-453, doi: 10.1109/DASA54658.2022.9765171.
- [2] S. C. Jakka, Y. V. Sai, J. A. and V. A. M. A., "Blind Assistance System using TensorFlow," 2022 3rd International Conference on Electronics and Sustainable Communication Systems (ICESC), Coimbatore, India, 2022, pp. 1505-1511, doi: 10.1109/ICESC54411.2022.9885356.
- [3] S. Durgadevi, K. Thirupurasundari, C. Komathi and S. M. Balaji, "Smart Machine Learning System for Blind Assistance," 2020 International Conference on Power, Energy, Control and Transmission Systems (ICPECTS), Chennai, India, 2020, pp. 1-4, doi: 10.1109/ICPECTS49113.2020.9337031.
- [4] X. Hu, A. Song, Z. Wei and H. Zeng, "StereoPilot: A Wearable Target Location System for Blind and Visually Impaired Using Spatial Audio Rendering," in IEEE Transactions on Neural Systems and Rehabilitation Engineering, vol. 30, pp. 1621-1630, 2022, doi: 10.1109/TNSRE.2022.3182661.
- [5] S. Martínez-Cruz, L. A. Morales-Hernández, G. I. Pérez-Soto, J. P. Benitez-Rangel and K. A. Camarillo-Gómez, "An Outdoor Navigation Assistance System for Visually Impaired People in Public Transportation," in IEEE Access, vol. 9, pp. 130767-130777, 2021, doi: 10.1109/ACCESS.2021.3111544.
- [6] Ziad O. Abu-Faraj, Paul Ibrahim, Elie Jabbour and Anthony Ghaoui, "Design and Development of a Prototype Rehabilitative Shoes and Spectacles for the Blind", IEEE Int. Conf. BioMedical Engineering and Informatics, 2012, pp. 795-799.
- [7] Giva Andriana Mutiara, Gita Indah Hapsari and Ramanta Rijalul, "Smart Guide Extension for Blind Cane", IEEE Int. Conf. Information and Communication Technologies, 2016.
- [8] G. Balakrishnan, G. Sainarayanan, R. Nagarajan, and Sazali Yaacob, "A Stereo Image Processing System for Visually Impaired", Int. Journal of Computer, Electrical, Automation, Control and Information Engineering, vol.2, No.8, 2008, pp. 2794-2803.
- [9] Rui Jiang, Qian Lin Li, "Let Blind People See: Real-Time Visual Recognition with Results Converted to 3D Audio", Proc. International Conference on Computer Vision, 2015.
- [10] M. Hiromoto, H. Sugano, and R. Miyamoto, "Partially Parallel Architecture for AdaBoost-Based Detection With Haar-Like Features", IEEE Trans. Circuits and Systems for Video Technology, vol. 19, Jan 2009, pp. 41-52.
- [11] L. -B. Chen, J. -P. Su, M. -C. Chen, W. -J. Chang, C. -H. Yang and C. -Y. Sie, "An Implementation of an Intelligent Assistance System for Visually Impaired/Blind People," 2019 IEEE International Conference on Consumer Electronics (ICCE), Las Vegas, NV, USA, 2019, pp. 1-2, doi:10.1109/ICCE.2019.8661943.
- [12] N. Ghatwary, A. Abouzeina, A. Kantoush, B. Eltawil, M. Ramadan and M. Yasser, "Intelligent Assistance System for Visually Impaired/Blind People (ISVB)," 2022 5th International Conference on Communications, Signal Processing, and their Applications (ICCSPA), Cairo, Egypt, 2022, pp. 1-7, doi: 10.1109/ICCSPA55860.2022.10019201.
- [13] Y. -S. Lin, W. -C. Chen and T. P. -C. Chen, "Tensor-Centric Processor Architecture for Applications in Advanced Driver Assistance Systems," 2021 International Symposium on VLSI Design, Automation and Test (VLSI-DAT), Hsinchu, Taiwan, 2021, pp. 1-3, doi: 10.1109/VLSI-DAT52063.2021.9427310.
- [14] K. Chaccour and G. Badr, "Novel indoor navigation system for visually impaired and blind people," 2015 International Conference on Applied Research in Computer Science and Engineering (ICAR), Beiriut, Lebanon, 2015, pp. 1-5, doi: 10.1109/ARCSE.2015.7338143.
- [15] V. C. Sekhar, S. Bora, M. Das, P. K. Manchi, S. Josephine and R. Paily, "Design and Implementation of Blind Assistance System Using Real Time Stereo Vision Algorithms," 2016 29th International Conference on VLSI Design and 2016 15th International Conference on Embedded Systems (VLSID), Kolkata, India, 2016, pp. 421-426, doi: 10.1109/VLSID.2016.11.



INTERNATIONAL
STANDARD
SERIAL
NUMBER
INDIA



INTERNATIONAL JOURNAL OF INNOVATIVE RESEARCH

IN SCIENCE | ENGINEERING | TECHNOLOGY

 9940 572 462  6381 907 438  ijirset@gmail.com



www.ijirset.com

Scan to save the contact details