



e-ISSN: 2319-8753 | p-ISSN: 2347-6710

IJRSET

International Journal of Innovative Research in
SCIENCE | ENGINEERING | TECHNOLOGY



INTERNATIONAL JOURNAL OF INNOVATIVE RESEARCH

IN SCIENCE | ENGINEERING | TECHNOLOGY

Volume 13, Issue 3, March 2024

ISSN INTERNATIONAL
STANDARD
SERIAL
NUMBER
INDIA

Impact Factor: 8.423

9940 572 462

6381 907 438

ijirset@gmail.com

www.ijirset.com

Bi-LSTM Based Poetry Text Classification for Emotion Recognition

P.Poornima, K.Deepa, A.Hemachandra, V.Gnanika, R.Johnson Paul, T.N Jaysheel

Assistant Professor, Department of CSE, AITS, Tirupati, India

Students, Department of CSE, Annamacharya Institute of Technology and Sciences, Tirupati, India

ABSTRACT: The classification of emotional states from poetry or formal text has received less attention by the experts of computational intelligence in recent times as compared to informal textual content like SMS, email, chat, and online user reviews. In this study, an emotional state classification system for text is proposed using the latest and innovative technology of Artificial Intelligence, called Deep Learning. For this purpose, an attention-based Bi-LSTM model is implemented on the text corpus. The proposed approach classifies the text into different emotional states, like neutral, joy, fear, sadness, anger, etc.

KEYWORDS: Deep learning, emotion recognition, text, attention-based LSTM, formal text, emotional states

I.INTRODUCTION

There are countless remark texts Online because of the quick development of Web innovation and interpersonal organizations as of late. With regards to dissecting the profound inclinations of comments, computerized reasoning advancements can help. As a part of man-made consciousness, opinion examination is a profoundly valuable instrument for deciding the feeling pattern of remarks. Words have changed commitments to classification in opinion examination. Specialists in disciplines, for example, regular language handling, computational etymology, and fabricated brainpower have been keen on the order of perspectives, sentiments, and profound states. It is workable for a machine to assess formal and easy going composing. While the formal printed content comprises of verse, books, papers, books, plays, and official/lawful documentation, the casual literary substance comprises of SMS messages, visit messages, and web-based entertainment posts, in addition to other things.

In text order (otherwise called text grouping), free-text texts are doled out foreordained classes. The person can give applied points of view of report assortments, and the person might be utilized in the genuine world. Reports in medical care associations, for instance, are generally arranged utilizing scientific classifications of ailment classes, surgeries, protection repayment codes, and so on.

The utilization of AI calculations to extricate and dissect close to home states and subjects from verse composing has become progressively well-known lately. Yet, such exploration are confined by small datasets and a restricted scope of profound states. Conventional AI approaches have been utilized to distinguish close to home states from verse text in past examination, which utilized confined datasets that had been labelled with few inclination classes. To order verse material into two profound classifications, one examination utilized a Help Vector Machine (SVM) and a Bi-LSTM classifier.

Subsequently Bi-LSTM model is utilized which can assist with shutting this hole. We additionally used profound learning's Consideration system. To work on the precision of the order of profound states from text, we additionally use five inclination classes, which is an extension of standard work.

In this system, area 1 examine about Presentation. Related work will be examined in segment 2, area 3 portrays about our proposed, where segment 4 gives consequences of our work and we will close the paper in segment 5.

II.RECENT WORKS

A ton of scholastics have been dealing with "Feeling acknowledgment" utilizing AI approaches as of late. Utilizing different feeling classifications to order verse material, made a method for perceiving close to home states from verse text. The Nave Bayes AI classifier is utilized for this reason. Notwithstanding the way that



some verse are misclassified, the outcomes are promising.

To break down tweets concerning different semantic aspects like mockery, representation, and incongruity, applied various the ML classifiers like Choice Tree and Innocent Bayes. The 11- point scale was utilized to play out the correlation and sufficient, results are accomplished. Like work, in which they face an issue of restricted dataset size, where likewise utilized a restricted dataset. The two examinations meant to deal with this constraint later on by the augmentation of the dataset.

SVM and Nave Bayes calculations were utilized to order verse as per their feeling class. The consequences of a small dataset were empowering. Consolidating phonemic components could improve the framework's adaptability. It is feasible to decide an individual's opinions about music in light of their mind-sets and themes.

A sound data structure was proposed. An assist vector with machining classifier is used to achieve the best results in such way. Notwithstanding this, mentality request can be refined. The robotized assessment of stanza in Arabic, Chinese, German, Malay, Persian and various vernaculars has been done already. As shown by Arabic refrain is isolated into a couple of sorts like Fakhr, Heja, Retha, and Ghazal. Computer based intelligence strategies are used to bunch the Arabic refrain as shown by the characterizations recorded already. SVM and S-CNN calculations are utilized to do feeling examination at the sentence-level in view of German books, and the outcomes are noteworthy. The SVM classifier beat the S-CNN classifier regarding precision. A directed ML strategy was recommended in. In tests, different classifiers were utilized. An assortment of feelings, then again, can be worked on later on to accomplish results that are more confident

III.PROPOSED WORK

The proposed system employs a deep learning approach for the classification of poetry text into distinct emotional states. Leveraging advanced neural network architectures, the model captures intricate patterns and semantic nuances within the poetic language, enabling accurate emotion recognition.

Utilizing a vast dataset, the system learns to distinguish between varied emotional states, enhancing its sensitivity to the subtle nuances of poetry. This innovative application of deep learning promises a robust and nuanced classification system for poetry, contributing to a deeper understanding of the emotional landscape within diverse literary works.

Project Flow:

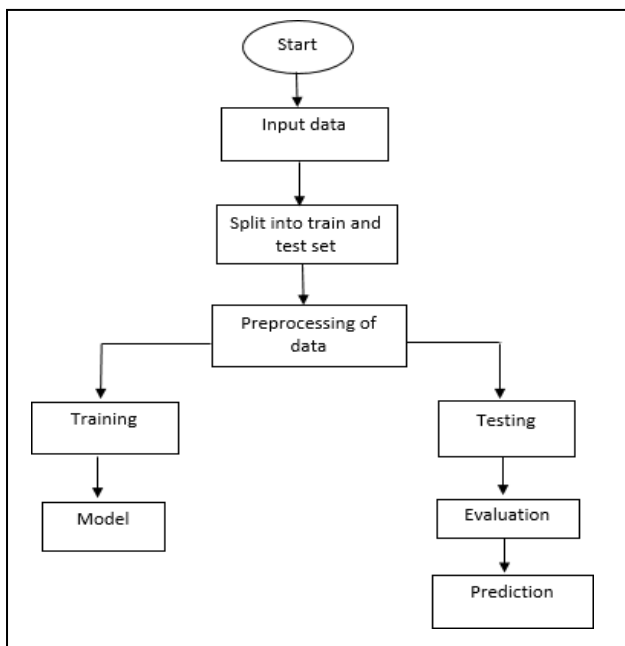


Fig 1: Block diagram of proposed method

Proposed Methodology Architecture

LSTM is an artificial recurrent neural network (RNN) architecture in deep learning. With the LSTM, there are feedback connections, as opposed to the typical feedforward neural network. In addition to processing single data points (such as pictures), it is able to process large datasets (such as speech or video). When it comes to tasks like handwriting identification, speech recognition, and anomaly detection in network traffic (or IDSs), LSTM can be used (intrusion detection systems).

Cells, input gates, output gates, and forget gates make up a typical LSTM unit. There are three gates in the cell that govern information flow in-and-out of it, and the cell may store data for any period of time. These networks are ideal for categorising, processing, and generating predictions based on time series data, because there might be unpredictable delays between key occurrences in the time series. When training typical RNNs, the vanishing gradient problem might occur. LSTMs were created to solve this problem. There are a number of situations where the relative insensitivity of the LSTM to gap length is an advantage over RNNs, hidden Markov models, and other sequence learning techniques

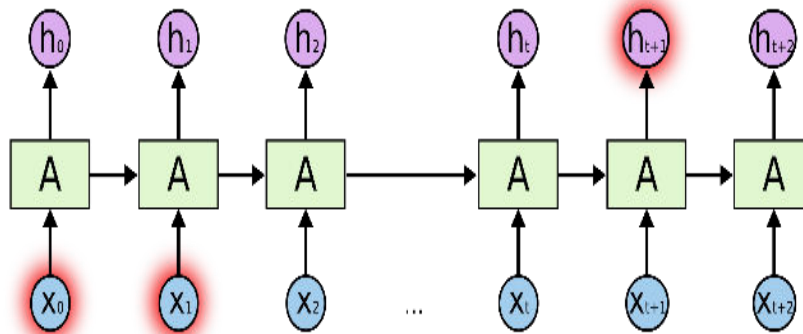
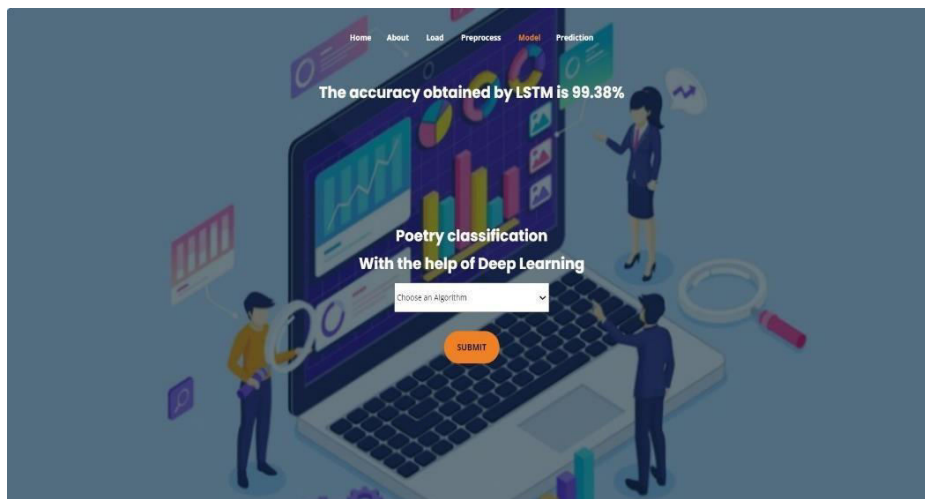
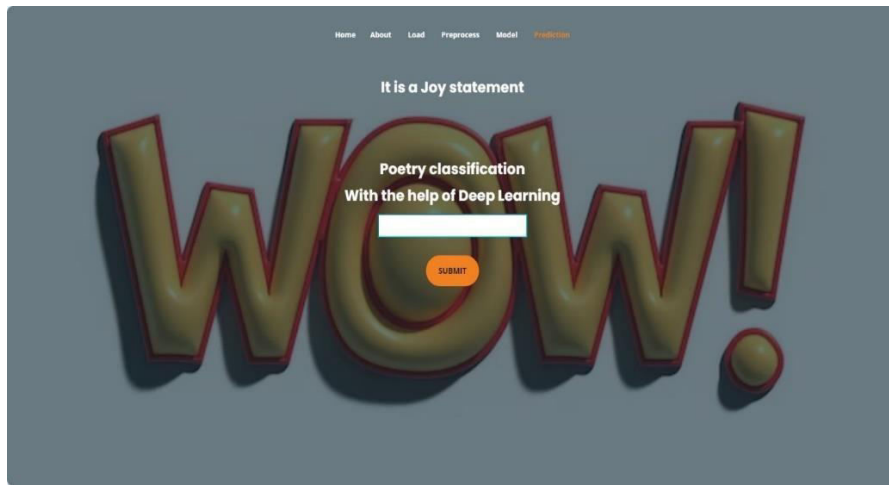


Fig 2. LSTM network diagram

IV.RESULTS AND DISCUSSION

Result:





V.DISCUSSION

Here we'll discuss about the evaluations or predictions that were achieved by using the approach described above and how they were assessed. After completing the training part, we plot accuracy and confusion matrix plots that which will be used to evaluate our models. The confusion matrix shows the classified emotional states.

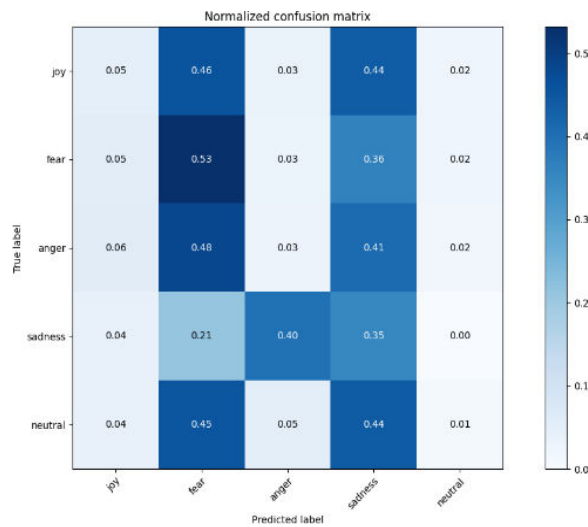


Fig 3. Confusion matrix plot using Bi-LSTM

The above figure shows the classified emotional states by using our proposed method.

VI.CONCLUSION

This study provides the classification of emotions from the text using the deep learning technique Bi-LSTM. That which classifies the 5 types of emotions from the text. Here Bi- LSTM and CNN are used for training the data. From the comparison of both the models, Bi- LSTM gives better accuracy.

REFERENCES



- [1] P. S. Sreeja and G. S. Mahalakshmi, "Feeling acknowledgment from sonnets by greatest back likelihood," *Int. J. Comput. Sci. Inf. Secur.*, vol. 14, pp. 36-43, 2016.
- [2] J. Kaur and J. R. Saini, "Punjabi verse grouping: The trial of 10 AI calculations," in *Proc. ninth Int. Conf. Mach. Learn. Comput. (ICMLC)*, 2017, pp. 1-5.
- [3] G. Mohanty and P. Mishra, "Miserable or happy? Corpus creation for Odia verse with opinion extremity data," in *Proc. nineteenth Int. Conf. Comput. Etymology Intell. Text Interaction. (CICLing)*, Hanoi, Vietnam, 2018.
- [4] Y. Hou and A. Candid, "Breaking down opinion in old style Chinese verse," in *Proc. ninth SIGHUM Studio Lang. Technol. Social Legacy, Social Sci., Murmur. (LaTeCH)*, 2015, pp. 15-24.
- [5] A. Ghosh, G. Li, T. Veale, P. Rosso, E. Shutova, J. Barnden, and A. Reyes, "SemEval-2015 errand 11: Opinion examination of allegorical language in Twitter," in *Proc. ninth Int. Studio Semantic Eval. (SemEval)*, 2015, pp. 470-478.



INTERNATIONAL
STANDARD
SERIAL
NUMBER
INDIA



INTERNATIONAL JOURNAL OF INNOVATIVE RESEARCH

IN SCIENCE | ENGINEERING | TECHNOLOGY

 9940 572 462  6381 907 438  ijirset@gmail.com



www.ijirset.com

Scan to save the contact details