



e-ISSN: 2319-8753 | p-ISSN: 2347-6710

# IJIRSET

International Journal of Innovative Research in  
**SCIENCE | ENGINEERING | TECHNOLOGY**

# INTERNATIONAL JOURNAL OF INNOVATIVE RESEARCH

IN SCIENCE | ENGINEERING | TECHNOLOGY

Volume 13, Issue 3, March 2024

**ISSN** INTERNATIONAL  
STANDARD  
SERIAL  
NUMBER  
INDIA

Impact Factor: 8.423

9940 572 462

6381 907 438

[ijirset@gmail.com](mailto:ijirset@gmail.com)

[www.ijirset.com](http://www.ijirset.com)

# SATELLITE IMAGING ANALYSIS: Unveiling the Potential of Satellite Images with Machine Learning

Mrs. B.Kalyani<sup>1</sup>, Mr. Siva Nageswara Rao<sup>2</sup>, Mr. Harasekhar<sup>3</sup>, Mr.Vengababu<sup>4</sup>, Mr. Shalem Raju<sup>5</sup>

Associate Professor, Dept. of Information Technology, KKR & KSR Institute of Technology and Sciences,  
Guntur, India<sup>1</sup>

Student, Dept. of Information Technology, KKR & KSR Institute of Technology and Sciences, Guntur, India<sup>2-5</sup>

**ABSTRACT:** Satellite imagery plays a pivotal role in numerous real-world applications, encompassing agriculture, navigation, and geographical information systems (GIS). However, the inherent characteristics of satellite images, including their large size, acquisition from vast distances, and susceptibility to noise and environmental factors, necessitate preprocessing before effective analysis by researchers. This paper presents a comprehensive review of machine learning-based image processing techniques specifically tailored for satellite image analysis. We delve into an exploration of popular techniques, providing a comparative analysis of their functionalities and inherent limitations. Furthermore, the paper explores various metrics employed to evaluate the performance of these processing methods within different facets of satellite image analysis. This comparative analysis equips researchers with a thorough understanding of image processing techniques and their effectiveness in extracting valuable information from satellite data. By elucidating the strengths and weaknesses of various approaches, this review serves as a valuable resource for researchers seeking to leverage the power of machine learning in unlocking the potential of satellite imagery.

**KEYWORDS:** Satellite Image Processing, Machine Learning, Remote Sensing, Image Analysis, Navigation, GIS, Feature Extraction, Classification, Performance Evaluation, Noise Reduction Environmental Monitoring Deep Learning, Unsupervised Learning

## I. INTRODUCTION

Despite their immense value in fields like agriculture, navigation, and geographical information systems (GIS), satellite images present challenges due to their large size, acquisition from vast distances, and susceptibility to noise. This project embarks on a journey to explore how machine learning can revolutionize the way we process satellite imagery. We will delve into a comprehensive analysis of popular machine learning techniques specifically designed for this purpose. This analysis will not only explore the functionalities of each technique but also provide a critical comparison of their limitations. Additionally, we will investigate various metrics used to evaluate the performance of these processing methods, allowing us to gain a nuanced understanding of their strengths and weaknesses. Ultimately, this project aims to equip researchers with a thorough understanding of how machine learning can be leveraged to unlock the true potential of satellite data, ultimately contributing to advancements in various disciplines that rely on this critical information source.

We will not only explore the functionalities of each technique but also provide a critical comparison of their limitations. Additionally, we will investigate various metrics used to evaluate the performance of these processing methods, allowing us to gain a nuanced understanding of their strengths and weaknesses. Ultimately, this project aims to equip researchers with a thorough understanding of how machine learning can be leveraged to unlock the true potential of satellite data, ultimately contributing to advancements in various disciplines that rely on this critical information source.

## II. LITERATURE SURVEY

[1] This work proposes a GNSS-free method for self-driving vehicle localization by combining place recognition and multi-hypothesis pose tracking. Utilizing a Gaussian sum filter, it efficiently tracks hypotheses from

diverse sensor data, even in different dimensions and modalities. By iteratively refining hypotheses and estimating a null hypothesis probability, it achieves robust localization without GNSS. Extensive experiments demonstrate superior performance, with no initialization failures and state-of-the-art accuracy in cross-modality localization. Future enhancements aim to extend the approach to camera inputs for cross-view geo-localization and improve robustness and accuracy further.

[2] This study introduces a novel approach using dynamic mode decomposition (DMD) for compressing and reconstructing hyperspectral images (HSIs). By decomposing HSIs into spatial dynamic modes and spectral patterns, it achieves accurate reconstruction with low-rank models. The extension to CubeDMD enables compression in horizontal, vertical, and spectral dimensions. Validation on real data shows promising results, with a peak signal-to-noise ratio of 31.47 dB and a mean spectral angle mapper of 0.1037. While computationally intensive, this data-driven method outperforms traditional SVD-based techniques, offering a practical solution for high-volume HSI processing and storage challenges.

[3] The Deep Back-Projection Networks (DBPN), winner of NTIRE2018 and PIRM2018 challenges for single image super-resolution, diverge from feed-forward approaches by incorporating iterative up- and down-sampling layers. These layers feature error feedback mechanisms, enhancing mutual dependencies between low- and high-resolution images. By integrating mutually-connected units and introducing parameter sharing and transition layers, DBPN achieves superior performance, especially for large scaling factors like 8x. Unlike feed-forward methods, DBPN directly enhances SR features and accumulates self-correcting features from each upsampling stage, guided by error feedback. Its adaptability to emerging deep learning trends further enhances its effectiveness.

[4] The Frequency-domain Enhanced Attention Network (FEAN) addresses the challenge of underwater image super-resolution by leveraging frequency-enhanced attention modules (FEAM) and channel attention fusion blocks (CAFB). FEAN decomposes features into high and low frequencies, enhancing texture details and adjusting brightness/contrast. It efficiently integrates high and low-frequency information for color bias correction and detail enhancement. With a lightweight architecture, FEAN outperforms other methods on the USR-248 dataset, achieving PSNR values of 29.97 dB, 26.23 dB, and 23.99 dB for scale factors of  $\times 2$ ,  $\times 4$ , and  $\times 8$ . Future work aims to enhance model generalization by incorporating physical model learning and expanding real underwater image datasets.

[5] The Frequency-domain Enhanced Attention Network (FEAN) addresses the challenge of underwater image super-resolution by leveraging frequency-enhanced attention modules (FEAM) and channel attention fusion blocks (CAFB). FEAN decomposes features into high and low frequencies, enhancing texture details and adjusting brightness/contrast. It efficiently integrates high and low-frequency information for color bias correction and detail enhancement. With a lightweight architecture, FEAN outperforms other methods on the USR-248 dataset, achieving PSNR values of 29.97 dB, 26.23 dB, and 23.99 dB for scale factors of  $\times 2$ ,  $\times 4$ , and  $\times 8$ . Future work aims to enhance model generalization by incorporating physical model learning and expanding real underwater image datasets.

[6] This letter introduces AI4SmallFarms, a dataset facilitating machine learning methods to delineate agricultural field boundaries in smallholder farming systems. Comprising 439,001 meticulously digitized field polygons across Vietnam and Cambodia, the dataset addresses the challenge of limited training labels for Earth observation (EO) data. Multitemporal Sentinel-2 images ensure cloud-free data. The dataset enables rigorous experimental analysis, including a state-of-the-art deep learning workflow, fostering advancements in crop boundary delineation to support Sustainable Development Goals. AI4SmallFarms offers spatially disjoint training, validation, and test sets, ensuring reproducibility and aiding researchers in improving supervised machine learning methods

[7] This paper proposes computer vision algorithms for precision agriculture, using a low-cost camera and LiDAR sensor to detect vehicle location within furrows during early and late growth seasons. Algorithms adapt to ambient light and crop size, achieving accuracy comparable to RTK-GPS without satellite reliance. Six crop recognition and furrow edge algorithms are tested, with adaptive RGB filtering and inverted linear regression proving most accurate. In-field tests demonstrate close accuracy to ideal RTK-GPS, with standard deviations of 2.51 cm and  $0.83^\circ$  for early growth, and 1.37 cm and  $0.93^\circ$  for late growth. Closed-loop simulation confirms comparable path accuracy with superior reliability and simplicity over RTK-GPS.

[8] This study presents a new approach for localizing the Subthalamic Nucleus (STN) during Deep Brain

Stimulation (DBS) surgery for Parkinson's Disease (PD). Microelectrode recordings (MERs) are processed, and features are extracted to train a machine learning algorithm. By combining wavelet transformation features with a deep neural network, the method achieves 92% accuracy in detecting STN borders. Results from 100 PD patients validate the approach's effectiveness, offering real-time assistance to neurosurgeons during surgery. The proposed technique outperforms existing methods, demonstrating its potential as a cueing tool for accurate STN localization in DBS surgery.

### III. PROPOSED SYSTEM

This project exploring machine learning for satellite image processing offers a multitude of advantages across various fields:

1. **Enhanced decision-making:** Influencers use Instagram's various tools such as filters, stickers, and editing options to create visually appealing content that resonates with their target audience. This content can include photos, videos, Stories, IGTV videos, and Reels.
2. **Improved navigation accuracy:** Machine learning algorithms can identify and classify roads, buildings, and landmarks in processed satellite imagery. This leads to more accurate and dynamic navigation maps, improving user experience and route planning. Real-time processing can further enhance navigation by providing traffic monitoring and route optimization, reducing congestion and travel time.
3. **Advanced GIS applications:** Machine learning can automate tasks like land cover classification and change detection within Geographical Information Systems (GIS). This results in more accurate and up-to-date GIS databases critical for environmental monitoring, urban planning, and disaster management.
4. **Knowledge discovery and innovation:** A deeper understanding of machine learning techniques for satellite image processing paves the way for further innovation. This can lead to the development of new applications in diverse fields, potentially impacting areas like resource exploration, climate change monitoring, and disaster prediction.
5. **Democratization of data analysis:** By providing researchers with a thorough understanding of machine learning for satellite image processing, the project fosters wider adoption of these techniques. This empowers a broader range of researchers to leverage satellite data for their specific needs, potentially leading to groundbreaking discoveries across various disciplines.

In essence, this project goes beyond simply processing satellite images. It unlocks the true potential of this data source, leading to advancements in various fields that rely on this critical information.

#### 3.1 PROBLEM DEFINITION:

Satellite images, though valuable for agriculture, navigation, and geography, pose challenges. Their massive size (due to high resolution) makes processing expensive. Additionally, the vast acquisition distances and presence of noise hinder analysis. Traditional techniques struggle with this complexity. This project bridges the gap by using machine learning to automate tasks, extract hidden information, and improve processing accuracy. By overcoming these challenges, the project unlocks the true power of satellite data, empowering researchers across various disciplines.

3.2 WORK FLOW:

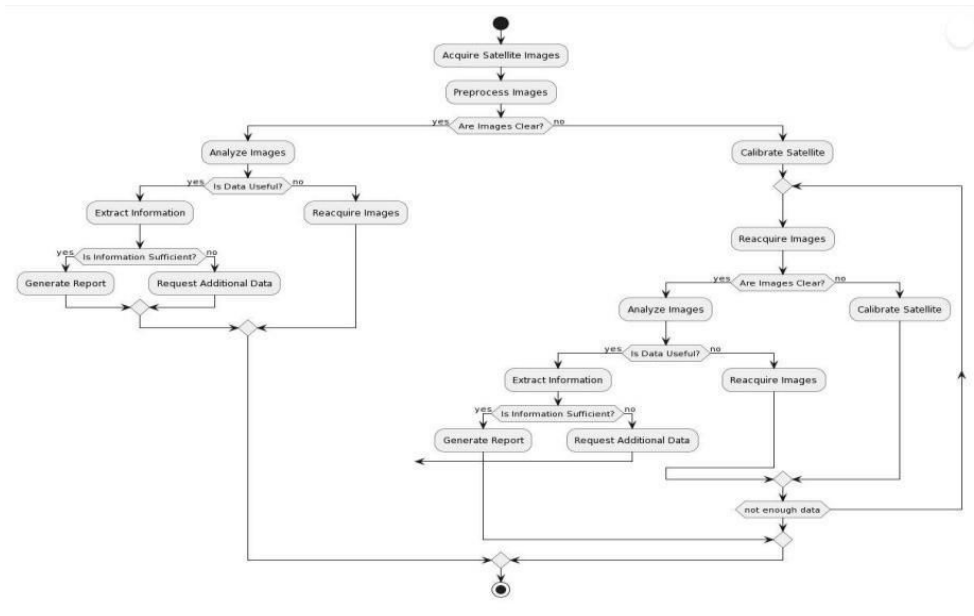


Fig 1: Workflow of the System

The workflow diagram ensures that:

1. **Acquire Satellite Images:** This is the starting point of the process, where the satellite captures images of the Earth's surface.
2. **Preprocess Images:** The raw satellite data may contain noise or inconsistencies. This step involves cleaning and preparing the images for further analysis.
3. **Are Images Clear?:** A decision point is reached to assess the quality of the preprocessed images. If the images are still unclear or unusable, the process loops back to acquiring new images.
4. **Analyze Images:** If the preprocessed images are deemed acceptable, they are then analyzed to extract meaningful information.
5. **Is Data Useful:** Another decision point is reached to evaluate the usefulness of the extracted information. If the data is not useful for the intended purpose, the process may loop back to acquiring new images or potentially re-analyze the images with different techniques.
6. **Extract Information:** If the data is useful, this step involves extracting specific details or features from the images, such as land cover types, objects, or changes over time.
7. **Generate Report:** If sufficient information is extracted, a report is generated that summarizes the findings and insights gleaned from the satellite image analysis.

IV. MODELS USED

The following models are used for feature extraction as well as for temporal analysis.

- 1.) **Convolutional Neural Networks (CNN):** for feature extraction

A Convolutional Neural Network (CNN) is a type of deep learning algorithm commonly used for image classification and recognition tasks. It consists of multiple layers, including convolutional layers that extract features from input images, pooling layers that reduce dimensionality, and fully connected layers for classification. CNNs use a process called backpropagation to adjust weights and biases during training, optimizing the network's ability to classify images accurately. They are highly effective due to their ability to capture spatial hierarchies of features in images, making them widely used in computer vision applications.

## 2.) Random Forest:

Random Forest is a machine learning algorithm that excels at both classification and regression tasks. It works by creating a "forest" of multiple decision trees, each trained on a random subset of the data and using random features at each decision point. This randomness helps prevent overfitting and leads to high accuracy. While computationally expensive and somewhat like a black box, Random Forest's ability to handle missing data and its interpretability through feature importance analysis make it a valuable tool for various tasks, including satellite image processing.

## 3.) Support Vector Machine

Support Vector Machines (SVMs) are another powerful machine learning algorithm used for classification and regression tasks, particularly effective in high-dimensional data like satellite images. Imagine an SVM as a tool that finds the best dividing line, or hyperplane, to separate different classes of data points in a multidimensional space. It focuses on identifying the data points closest to the hyperplane, called support vectors, as these points have the greatest impact on the margin (distance) between the classes. This focus on maximizing the margin leads to robust models that perform well on unseen data, making them valuable for satellite image processing where accuracy is crucial.

## V. RESULT ANALYSIS

Machine learning applied to satellite image analysis can yield a variety of valuable results, depending on the specific application.

Geographical Information Systems (GIS):

Land Cover Classification: Automating land cover classification with machine learning allows for faster and more accurate creation of land cover maps, which are essential for environmental monitoring and resource management.

Change Detection: Machine learning can analyze time series of satellite images to detect changes in landcover, such as deforestation, urbanization, or flooding. This information is crucial for disaster management and environmental policy development.

3D Terrain Models: Advanced techniques can use satellite imagery to generate detailed 3D models of the Earth's surface, providing valuable data

for applications like urban planning, disaster preparedness, and resource exploration.

### INPUT :

**Input:** High-resolution aerial or satellite image of an urban area with significant tree cover.

The specific details of the input data may vary depending on your project goals. Here are some additional factors to consider:

**Spectral Bands:** Depending on your analysis (e.g., identifying tree species, assessing urban heat islands), you might require specific spectral bands beyond true color (red, green, blue).

**Resolution:** The image resolution determines the level of detail you can extract. Higher resolution is necessary for analyzing individual trees or small objects.

**Date and Time:** The image acquisition time (season, time of day) can influence the analysis, especially for vegetation studies.

**Geographic Location:** Knowing the location helps tailor the analysis to specific environmental factors or species distributions.



**Fig 2 :input of satellite image**

**Output:**

**Land Cover Map:** The project's output could be a classified map of the city area in the image. This map would categorize different land cover types, such as:

- Urban areas (buildings, roads)
- Trees (potentially further classified by species if the resolution and spectral bands allow)
- Grass
- Other categories depending on the project's specific goals (e.g., water bodies, bare soil)

**Land Cover Statistics:** In addition to the map, the project might generate statistics summarizing the land cover composition of the area. This could include the percentage of area covered by each category.

**Change Detection Analysis :** If you have historical satellite imagery of the same area, the project could output a change detection analysis. This would identify areas that have undergone changes in land cover over time (e.g., deforestation, urban expansion).



**Fig 3: Output Satellite Image**

## VI. CONCLUSION

Satellite imagery offers a wealth of information for land cover classification, but manual analysis is impractical for large datasets. Machine learning presents a promising alternative for automating this process. This review explored the feasibility and design of using machine learning for land cover classification from satellite imagery.

Machine learning offers a powerful approach for land cover classification from satellite imagery, with the potential for efficient and large-scale applications in environmental monitoring, urban planning, and disaster management. Future research should focus on improving generalizability, robustness, interpretability, and seamless integration with existing workflows to maximize the real-world impact of this technology.

## REFERENCES

1. NIKLAS STANNARTZ STEFAN SCHÜTTE MARKUS KUHN AND TORSTEN BERTRAM "Toward Precise Ambiguity-Aware Cross-Modality Global Self-Localization"[1]
2. Yanming Zhang , Student Member, IEEE, Ping Yuan, Lijun Jiang, Fellow, IEEE, and Hong Tat Ewe , Senior Member, IEEE "Novel Data-Driven Spatial-Spectral Correlated Scheme for Dimensionality Reduction of Hyperspectral Images"[2]
3. Muhammad Haris , Greg Shakhnarovich, and Norimichi Ukita, Member, IEEE "Back-Projecti Networks for Single Image Super-Resolution"[3]
4. IN LIU ZHENGXIANG GU HAIMING DING<sup>2</sup> MIN ZHANG <sup>3</sup> AND LI WANG <sup>4</sup> "Underwater Image Super-Resolution Using Frequency-Domain Enhanced Attention Network"[4]
5. Decai Jin, Jianbo Qi , Huaguo Huang, and Linyuan Li "Combining 3D Radiative Transfer Model and Convolutional Neural Network to Accurately Estimate Forest Canopy Cover From Very High-Resolution Satellite Images"[5]
6. Claudio Persello , Senior Member, IEEE, Jeroen Griff , Xinyan Fan , Claudia Paris , Senior Member, IEEE, Ronny Hänsch , Senior Member, IEEE, Mila Koeva , and Andrew Nelson "AI4SmallFarms: A Dataset for Crop Field Delineation in Southeast Asian Smallholder Farms"[6]
7. SAMUEL J. LEVOIR <sup>1,2</sup>, PETER A. FARLEY <sup>1</sup>, TAO SUN<sup>3</sup>, AND CHONG XU <sup>1</sup> "High-Accuracy Adaptive Low-Cost Location Sensing Subsystems for Autonomous Rover in Precision Agriculture"[7]
8. MAHSA KHOSRAVI S. FAROKH ATASHZAR GREYDON GILMORE<sup>6</sup> MANDAR S. JOG<sup>1,7,8</sup>, AND RAJNI V. PATEL "Intraoperative Localization of STN During DBS Surgery Using a Data-Driven Model"[8]
9. Paul M. Dare "Shadow Analysis in High-Resolution Satellite Imagery of Urban Areas"[9]
10. HUI YI <sup>1,2</sup>, XIANGNING CHEN <sup>1</sup> DECHENG WANG <sup>1</sup> SHUHAN DU <sup>1</sup> BIJIE XU <sup>1</sup> AN FENG
11. ZHAO "An Epipolar Resampling Method for Multi-View High Resolution Satellite Images Based on block"[10]





INTERNATIONAL  
STANDARD  
SERIAL  
NUMBER  
INDIA



# INTERNATIONAL JOURNAL OF INNOVATIVE RESEARCH

IN SCIENCE | ENGINEERING | TECHNOLOGY

 9940 572 462  6381 907 438  [ijirset@gmail.com](mailto:ijirset@gmail.com)



[www.ijirset.com](http://www.ijirset.com)

Scan to save the contact details