



e-ISSN: 2319-8753 | p-ISSN: 2347-6710

IJRSET

International Journal of Innovative Research in
SCIENCE | ENGINEERING | TECHNOLOGY



INTERNATIONAL JOURNAL OF INNOVATIVE RESEARCH

IN SCIENCE | ENGINEERING | TECHNOLOGY

Volume 13, Issue 3, March 2024

ISSN INTERNATIONAL
STANDARD
SERIAL
NUMBER
INDIA

Impact Factor: 8.423

9940 572 462

6381 907 438

ijirset@gmail.com

www.ijirset.com

Virtual Assistant Using AI

Mrs. Molla Khamar¹, Nannuri Sai Kiran², N.V.S Havin ash Reddy Arumalla³, Tirupati Sathwik⁴,

Talapaneni Naveen⁵

Assistant Professor, Department of Information Technology, KKR & KSR Institute of Technology and Sciences, Guntur, Andhra Pradesh, India.¹

B. Tech, Department of Information Technology, KKR & KSR Institute of Technology and Sciences, Guntur, Andhra Pradesh, India.²⁻⁵

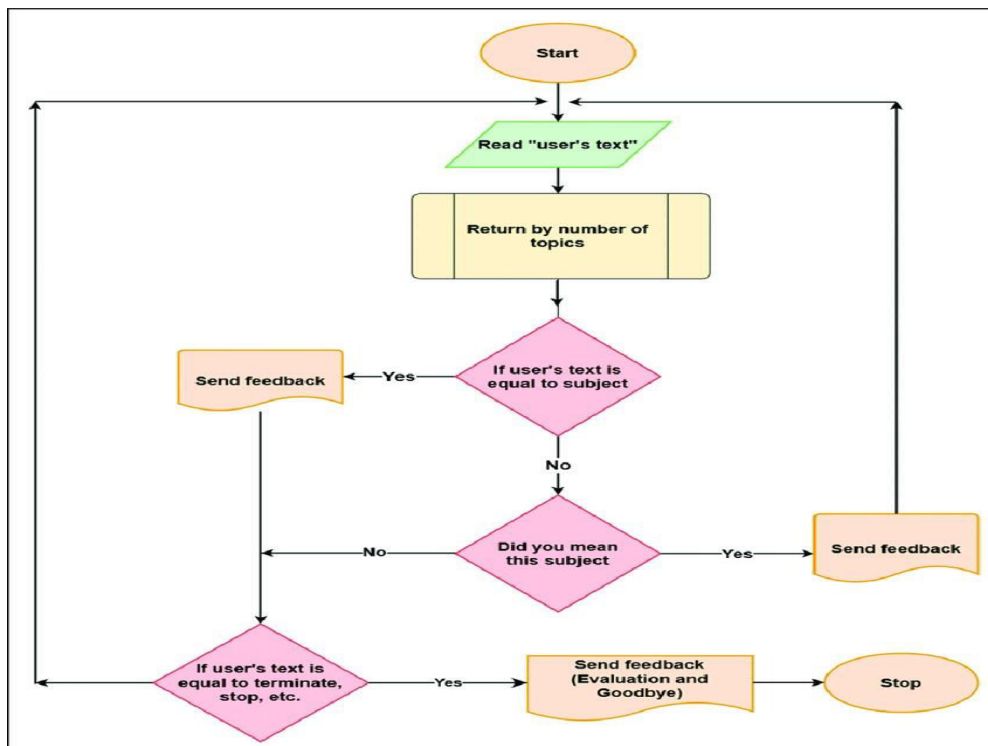
ABSTRACT: This AI-driven virtual assistant project aims to enhance user interaction and task automation through intelligent natural language processing. Leveraging advanced machine learning algorithms, the virtual assistant integrates seamlessly into various platforms, providing personalized assistance, information retrieval, and task execution. The project focuses on optimizing user experience by continuously learning and adapting to user preferences. Through a combination of dialogue management, sentiment analysis, and context-aware processing, the virtual assistant delivers efficient and user-friendly interactions. The outcomes include improved user satisfaction, increased task efficiency, and a scalable platform ready for integration into diverse applications.

KEYWORDS: AI, Virtual Assistant, Natural Language Processing, Machine Learning

I. INTRODUCTION

In today's fast-paced digital landscape, businesses and organizations are constantly seeking innovative ways to enhance customer service and streamline communication processes. One of the most promising technologies in this regard is Artificial Intelligence (AI), particularly in the form of chatbots.

Our AI Chatbot Project aims to harness the power of AI to develop a versatile and intelligent conversational agent capable of engaging with users, providing assistance, and delivering information across various platforms and domains.





The primary objective of our AI Chatbot Project is to create a highly functional and efficient solution that revolutionizes the way businesses interact with their customers, employees, and stakeholders. By leveraging natural language processing (NLP) and machine learning algorithms, our chatbot will offer personalized, timely, and accurate responses to user inquiries and requests.

II. LITERATURE SURVEY

Chatbots and conversational agents introduce the concept of bibliometric analysis to explore the evolution of chatbots from rule-based modeling to advanced AI. Analyzing data from the Web of Science and ProQuest, the study shows an increase in searches after 2015, potentially driven by improvements in deep learning. Applications span education, psychology, and linguistics, and include untapped commercial opportunities. Using CiteSpace and Bibliometrix, the search reflects a fragmented search environment. Recommendations allow exploration of new technologies, exploration of different applications, and a human-centered approach. This paper provides valuable insights to guide future research in the dynamic field of chatbots, emphasizing the need to explore comprehensive content in the field of conversational agents.[1] It proposes an Android app using AI and ML for assisting visually impaired individuals. Voice commands, image recognition, currency identification, and a chatbot are all integrated into it. The aim is to overcome challenges faced in daily activities, conversations, and reading. The current system limitations, such as language constraints and dependency on internet connectivity, motivate the development of a more versatile solution. Google Cloud APIs are used in the system architecture, along with Dialog-Flow for chatbot training and Cloud Vision API for image analysis. A decision tree algorithm enhances user interaction. The results show a boost in accuracy, sensitivity, and feasibility compared to current solutions. Future enhancements include multilingual support and integration with IoT.[2]

It dives into chatbots, a technology widely used for efficient services in businesses. Chatbots, which interact with users, enhance customer engagement and cut costs. They use natural language processing and machine learning to learn and provide effective responses. The paper talks about the challenges in creating chatbots and introduces features like handling images. Key terms include Chatbot, Natural Language Processing (NLP), Machine Learning (ML), and Artificial Intelligence (AI). Chatbots are categorized into open domain (for general info) and closed domain (focused on specific topics). The technology relies on ML, NLP, and logical frameworks for its functionality.[3] A smart chatbot to help programmers find the right people to ask for help in the Pharo software community. They created this chatbot to work with Discord, a chat platform. The goal is to improve how developers talk and work together. The chatbot uses smart algorithms to understand and recommend experts. They tested it, and people liked the recommendations, but some wanted the chatbot to chat more like a human. The study suggests that making a chatbot that talks perfectly like a human is tricky. The chatbot uses Natural Language Processing and special algorithms to understand and help developers in the opensource community.[4]

III. PROBLEM IDENTIFICATION

Existing Model

The problem at hand is the need for a versatile and intelligent AI chatbot solution that can effectively address the communication needs and requirements of businesses across various industries. Existing chatbot solutions may lack the sophistication, adaptability, or scalability required to meet the diverse needs of users and organizations. There is a need for a customizable, robust, and user-friendly AI chatbot platform that can be tailored to specific use cases and integrated seamlessly into existing workflows.

Problem Statement

Designing an AI chatbot for an e-commerce platform entail creating a conversational interface to streamline customer support services. With a focus on efficiency and user satisfaction, the chatbot aims to handle routine inquiries, such as product queries and order tracking, autonomously. Integrating natural language understanding (NLU) capabilities, the chatbot interprets user queries accurately and provides relevant responses in real-time. Its multi-channel deployment ensures accessibility across the e-commerce platform, website, and social media platforms, enhancing user reach. By leveraging backend system integration, the chatbot delivers up-to-date information on order status, product availability, and shipping details. Personalization features tailor responses based on user preferences and history, optimizing the support experience. Evaluation criteria include accuracy, user satisfaction, response time, and error handling, ensuring the chatbot meets performance expectations. Ultimately, the AI chatbot aims to revolutionize customer support operations, improving efficiency, satisfaction, and resource allocation for the e-commerce platform.

IV. PROPOSED MODEL

The proposed work for developing an AI chatbot involves several key stages to ensure a comprehensive and successful implementation. Firstly, thorough research and planning are essential to define the project's objectives, scope, and target audience. This phase also involves conducting market research to understand user needs and preferences, as well as identifying suitable AI chatbot frameworks or platforms.

Once the research and planning phase is complete, the design phase begins, where the conversation flow and user interfaces for the chatbot are developed. This involves creating conversation flow diagrams to map out user interactions and designing user interfaces that are intuitive and user-friendly. Wireframes and mockups are also created to visualize the chatbot's interface and user experience.

The development phase entails selecting and implementing the chosen AI chatbot framework or platform, such as Dialogflow or Microsoft Bot Framework. This involves developing natural language processing (NLP) capabilities to understand user inputs, as well as dialogue management logic to generate appropriate responses. Integration with external APIs or databases may also be required to access relevant information.

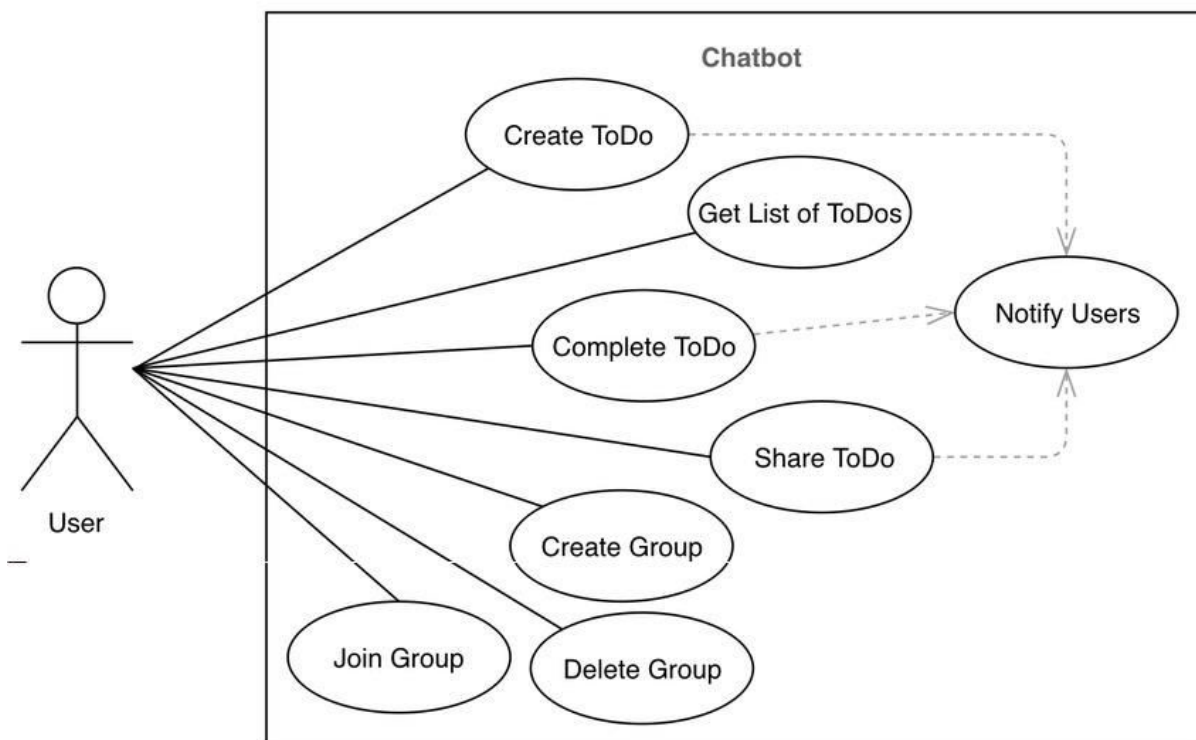
Testing is a critical stage in the development process to ensure the chatbot functions as intended and provides accurate responses across different scenarios and user inputs. User testing and feedback are also essential during this phase to identify any usability issues or areas for improvement.

Once testing is complete, the chatbot is deployed to production environments, and integrations are configured to ensure smooth operation. Monitoring and maintenance activities are then conducted to track performance metrics and user interactions, as well as to address any issues or bugs that may arise.

Finally, documentation and training materials are created to provide guidance on using and maintaining the chatbot. Knowledge transfer to relevant stakeholders ensures ongoing support and management of the chatbot beyond the initial development phase.

Overall, the proposed work for developing an AI chatbot involves a systematic approach that encompasses research, design, development, testing, deployment, and maintenance activities to create a robust and effective conversational agent.

Use Case Diagram



The use case diagram illustrates the functional requirements and interactions between users and the system in a concise



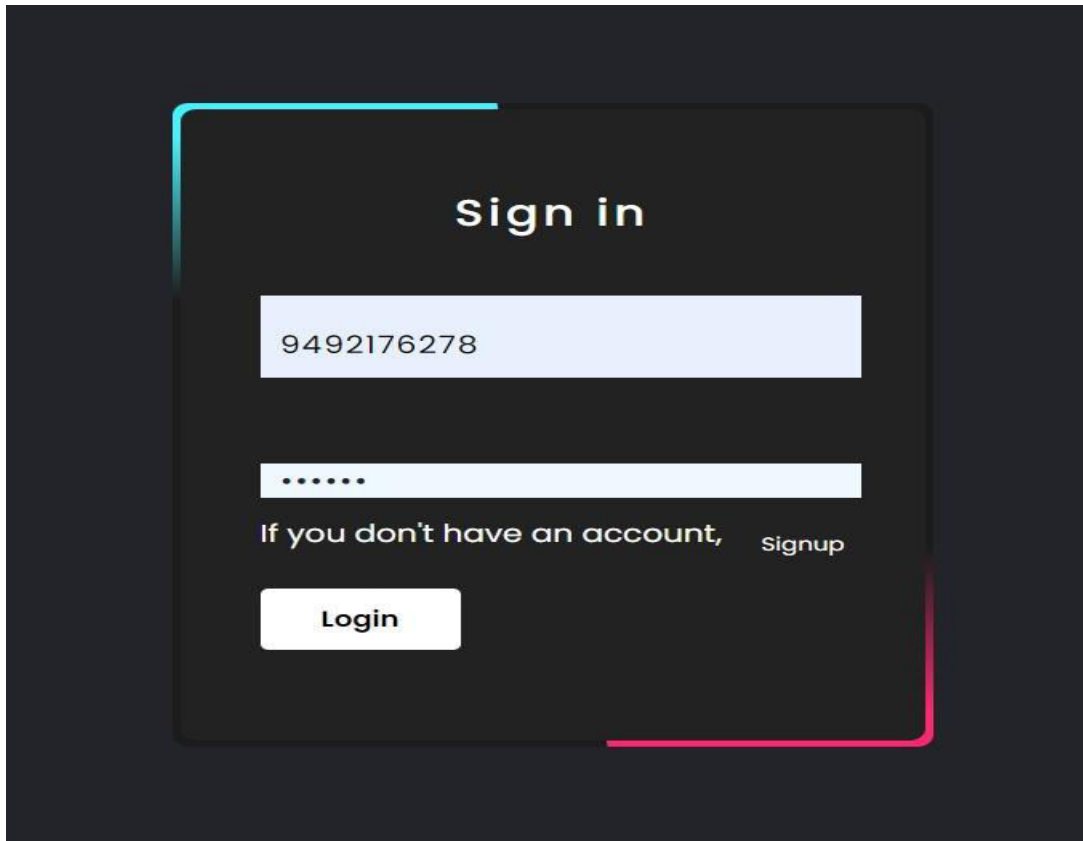
visual format. It depicts various actors (users or systems) and their interactions with the system through different use cases (functional requirements). The diagram provides a high-level overview of the system's functionality and helps stakeholders understand how users interact with the system to accomplish specific tasks or goals.

V. RESULT

The result of implementing the proposed work for developing an AI chatbot is a functional and intelligent conversational agent that enhances user engagement and streamlines communication processes. With careful planning, thorough research, and diligent execution, the AI chatbot can understand user queries, providing accurate responses, and delivering personalized assistance across various platforms and channels.

The image shows a 'Sign up' form on a dark background. The form is centered and contains the following elements:

- The title 'Sign up' in a white, sans-serif font.
- Four white input fields with labels: 'Name', 'Mobile', 'Email ID', and 'Password'.
- A link labeled 'Sign in' in a smaller, lighter font.
- A white button with the text 'Register' in a bold, black font.



VI. CONCLUSION

In conclusion, the development of an AI chatbot project represents a significant step forward in leveraging technology to enhance communication, streamline processes, and improve user experiences. Through careful planning, diligent execution, and continuous refinement, the AI chatbot emerges as a valuable asset for businesses and organizations seeking to engage with their customers, employees, and stakeholders in more efficient and effective ways.





REFERENCES

- [1] H. N. Io and C. B. Lee, "Chatbots and conversational agents: A bibliometric analysis," 2017 IEEE International Conference on Industrial Engineering and Engineering Management (IEEM), Singapore, 2017, pp. 215-219, DOI: 10.1109/IEEM.2017.8289883.
- [2] S. M. Felix, S. Kumar and A. Veeramuthu, "A Smart Personal AI Assistant for Visually Impaired People," 2018 2nd International Conference on Trends in Electronics and Informatics (ICOEI), Tirunelveli, India, 2018, pp. 1245-1250, DOI: 10.1109/ICOEI.2018.8553750.
- [3] V. Selvi, S. Saranya, K. Chidida and R. Abarna, "Chatbot and bullyfree Chat," 2019 IEEE International Conference on System, Computation, Automation and Networking (ICSCAN), Pondicherry, India, 2019, pp. 1-5, DOI: 10.1109/ICSCAN.2019.8878779.
- [4] N. Sandu and E. Gide, "Adoption of AI-Chatbots to Enhance Student Learning Experience in Higher Education in India," 2019 18th International Conference on Information Technology Based Higher Education and Training (ITHET), Magdeburg, Germany, 2019, pp. 1-5, DOI: 10.1109/ITHET46829.2019.8937382.
- [5] J. Cerezo, J. Kubelka, R. Robbes and A. Bergel, "Building an Expert Recommender Chatbot," 2019 IEEE/ACM 1st International Workshop on Bots in Software Engineering (BotSE), Montreal, QC, Canada, 2019, pp. 59-63, DOI: 10.1109/BotSE.2019.00022.
- [6] M. Ganesan, D. C., H. B., K. A.S. and L. B., "A Survey on Chatbots Using Artificial Intelligence," 2020 International Conference on System, Computation, Automation and Networking (ICSCAN), Pondicherry, India, 2020, pp. 1-5, DOI: 10.1109/ICSCAN49426.2020.9262366.
- [7] K. Deepika, V. Tilekya, J. Mamatha and T. Subetha, "Jollity Chatbot- A contextual AI Assistant," 2020 Third International Conference on Smart Systems and Inventive Technology (ICSSIT), Tirunelveli, India, 2020, pp. 1196-1200, DOI: 10.1109/ICSSIT48917.2020.9214076.
- [8] S. Meshram, N. Naik, M. VR, T. More and S. Kharche, "Conversational AI: Chatbots," 2021 International Conference on Intelligent Technologies (CONIT), Hubli, India, 2021, pp. 1-6, DOI: 10.1109/CONIT51480.2021.9498508.
- [9] M. Momaya, A. Khanna, J. Sadavarte and M. Sankhe, "Krushu – The Farmer Chatbot," 2021 International Conference on Communication information and Computing Technology (ICCICT), Mumbai, India, 2021, pp. 1-6, DOI: 10.1109/ICCICT50803.2021.9510040.
- [10] J. Skrebeca, P. Kalniete, J. Goldbergs, L. Pitkevica, D. Tihomirova and A. Romanovs, "Modern Development Trends of Chatbots Using Artificial Intelligence (AI)," 2021 62nd International Scientific Conference on Information Technology and Management Science of Riga Technical University 1-6,(ITMS), Riga, Latvia, 2021, pp. DOI: 10.1109/ITMS52826.2021.9615258.
- [11] Singh, P. Murugeswari, S. D. P. Ragavendiran, A. Kaur, G. Singh and S. Margabandu, "AIbased Chatbot for Physically Challenged People," 2022 International Conference on Edge Computing and Applications (ICECAA), Tamilnadu, India, 2022, pp. 1039-1044, DOI: 10.1109/ICECAA55415.2022.9936585.
- [12] S. Singh, M. Kaur, P. Tanwar and S. Sharma, "Design and Development of Conversational Chatbot for Covid-19 using NLP: an AI application," 2022 6th International Conference on Computing Methodologies and Communication (ICCMC), Erode, India, 2022, pp. 1654-1658, DOI: 10.1109/ICCMC53470.2022.9753893.
- [13] S. R. Dammavalam, N. Chandana, T. R. Rao, A. Lahari and B. Aparna, "AI Based Chatbot for Hospital Management System," 2022 3rd International Conference on Computing, Analytics and Networks (ICAN), Rajpura, Punjab, India, 2022, pp. 1-5, DOI: 10.1109/ICAN56228.2022.10007105.
- [14] S. Swain, S. Naik, A. Mhalsekar, H. Gaonkar, D. Kale and S. Aswale, "Healthcare Chatbot System: A Survey," 2022 3rd International Conference on Intelligent Engineering and Management (ICIEM), London, United Kingdom, 2022, pp. 75-80, DOI: 10.1109/ICIEM54221.2022.9853158.



INTERNATIONAL
STANDARD
SERIAL
NUMBER
INDIA



INTERNATIONAL JOURNAL OF INNOVATIVE RESEARCH

IN SCIENCE | ENGINEERING | TECHNOLOGY

 9940 572 462  6381 907 438  ijirset@gmail.com



www.ijirset.com

Scan to save the contact details