



e-ISSN: 2319-8753 | p-ISSN: 2347-6710

IJIRSET

International Journal of Innovative Research in
SCIENCE | ENGINEERING | TECHNOLOGY



INTERNATIONAL JOURNAL OF INNOVATIVE RESEARCH

IN SCIENCE | ENGINEERING | TECHNOLOGY

Volume 13, Issue 3, March 2024

ISSN INTERNATIONAL
STANDARD
SERIAL
NUMBER
INDIA

Impact Factor: 8.423



Image Inpainting with Deep Learning

Rohan Narayan Godbole, Raj Ankush Bharankar , Chinmay Umesh Puranik,
Anup Shriram Patwardhan, Mandar Joshi

Student, Department of IT, Finolex Academy of Management and Technology, Ratnagiri, Maharashtra, India

Associate Professor, Department of IT, Finolex Academy of Management and Technology, Ratnagiri, India

ABSTRACT: With the rapid development of computer technology, image inpainting has become a research hotspot in the field of deep learning. Image inpainting belongs to the intersection of computer vision and computer graphics, and is an image processing technology between image editing and image generation. The proposal of generative adversarial network effectively improves the problems of poor image inpainting effect and large difference between the inpainting image and the target image, and promotes the development of image inpainting technology. In this paper, the image inpainting is based on the generation of confrontation networks. Its network structure establishes two repair paths, namely the reconstruction path and the generation path, and the two paths correspond to two groups of networks. The encoder and generator in the network respectively complete the encoding and decoding tasks based on the residual network. The discriminator also uses the patch block discriminator on the basis of the residual network to discriminate the authenticity of the image. This paper uses Places2 data set to verify the algorithm, and uses PSNR and SSIM two objective evaluation methods to evaluate the quality of the repaired image. Experiments show that the algorithm inpainting effect is better.

I. INTRODUCTION

Image inpainting is a restoration technique which uses surrounding known information to infer the missing contents of an image. The known information may be structural, statistical, semantic etc. These different information are utilized by different techniques to be used for a wide range of applications such as removing obstructions in images, image super-resolution, face image editing, repairing damaged images during imaging etc. Image inpainting research started in 1993, with a disocclusion research by Nitzberg's for repairing images using a computer. Later in 2000, Bertalmio et al. proposed an digital image inpainting algorithm that can automatically refill the missing region (hole) using the surrounding data and coined the term 'image inpainting'. One of the advantage of this technique is the automatic restoration of missing regions with different structures and backgrounds. Image inpainting methods can be generally classified into two: Traditional and Deep learning based image inpainting methods. Some of the examples of the traditional image inpainting techniques are Diffusion approaches ,exampler methods and hybrid methods. Traditional methods uses the structural and texture information rather than the semantic contents leading to the imperfect restoration of the missing region of an image, even after balancing the structural and texture inpainting gradually. Recent image inpainting research employs the statistical data and geometric structure. The drawbacks of the traditional inpainting techniques are been resolved to an extent with the introduction of deep learning in image inpainting, which provided much superior and improved quality inpainted results in comparison. As the research progressed, the convolutional neural network representing the feed-forward neural network captured the abstract information in the images . And later in 2014, another deep learning framework named Generative Adversarial Network (GAN) was developed that exhibited spectacular inpainted outcomes and significant improvement in image inpainting quality. The inpainted image is analyzed quantitatively using evaluation metrics like Peak Signal to Noise Ratio (PSNR), Frechet Inception Distance (FID), Structural Similarity Index measure (SSIM), Inception Score (IS), Multi-Scale Structural Similarity (MS-SSIM), Universal Quality Index (UQI), Mean Squared Error (MSE) and Learned Perceptual Image Patch Similarity (LPIPS). Due to the rapid advancement of the deep learning based image inpainting techniques, a well-known



model named, Context Encoder (CE) was established by Pathak et al. This was the first successful GAN implementation in image inpainting. CE is generally a convolutional neural network.

II. RELATED WORK

Several notable works in the field of image inpainting have contributed significantly to advancing inpainting techniques. "Context Encoders: Feature Learning by Inpainting" by Pathak et al. (2016) introduced deep learning-based inpainting using Deep Convolutional Generative Adversarial Networks (DCGANs), demonstrating impressive results in filling missing regions. Yu et al.'s "Generative Image Inpainting with Contextual Attention" (2018) proposed a GAN model with contextual attention, significantly improving inpainting quality by focusing on relevant context during generation. Yan et al.'s "Variational Image Inpainting with Hierarchical Adversarial Networks" (2018) presented a hierarchical VAE framework for inpainting, leveraging global and local context for realistic results. Liu et al.'s "Image Inpainting via Generative Multi-column Convolutional Neural Networks" (2018) utilized deep feature synthesis and multi-column CNNs for enhanced inpainting performance. Barnes et al.'s "Image Inpainting with Texture Synthesis" (2009) explored texture synthesis techniques for preserving texture patterns in inpainted regions. Sajjadi et al.'s "Semantic Image Inpainting with Deep Generative Models" (2018) focused on semantic inpainting, integrating deep generative models for context-aware results. Yu et al.'s "Deepfillv2: Free-form Image Inpainting with Gated Convolution" (2019) introduced interactive inpainting using gated convolutions, allowing user guidance for inpainting tasks. Liu et al.'s "Image Inpainting for Irregular Holes Using Partial Convolutions" (2018) addressed ethical concerns by handling irregular inpainting regions with partial convolutions, reducing artifacts and biases. These works collectively showcase advancements in deep learning, attention mechanisms, semantic understanding, and user-guided inpainting, contributing to the field's progress and addressing key challenges in image inpainting techniques.

III. SYSTEM REQUIREMENTS

This section outlines the fundamental hardware and software specifications necessary for the successful operation of your image inpainting project using deep learning. Understanding these requirements is crucial for ensuring both the project's feasibility and its ability to achieve its desired performance goals. The information presented here serves as a roadmap for developers and other stakeholders involved in the project's implementation. It specifies the minimum and recommended configurations, allowing them to assess resource availability and identify any potential challenges or limitations.

TABLE I. REQUIREMENTS

Sr No.	Software/Hardware	Version/Disk Space
1.	Random Access Memory	16GB
2.	Read-Only Memory	16GB
3.	Operating System	Windows 10/11 or higher
4.	Visual Studio Version	4.1 or higher

IV. SYSTEM ARCHITECTURE

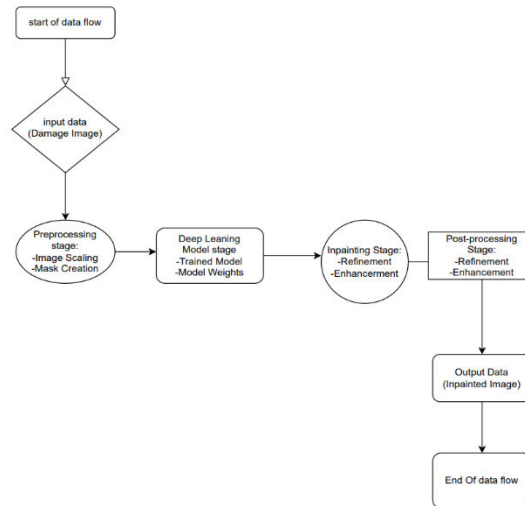


Fig. 1. Architecture Mapping

The image inpainting system employs a deep learning pipeline. Initially, damaged images undergo preprocessing (scaling, masking). Processed data then enters a three-stage model: an encoder extracts features from the image and mask, a decoder generates a new image based on those features, and an inpainting stage refines the generated image to create the final, seamlessly reconstructed output .

V. METHODOLOGY

1. Data Collection and Preparation:

Gathering Diverse Damage: Collect a comprehensive dataset encompassing diverse image types and varying missing region complexities. Aim for a representative distribution of object categories, damage sizes, locations, and backgrounds. Include both natural and synthetic images to enhance model generalizability.

Preprocessing Pipeline: Establish a robust preprocessing pipeline to ensure consistent data format and facilitate model training. Standardize image resolutions, normalize pixel intensities between 0 and 1, and consider potential data augmentation techniques like random cropping and flipping to artificially expand the dataset size and improve model robustness. Explore converting images to grayscale if it aligns with your project goals and chosen architecture.

2. Model Selection and Architecture:

Tailored Approach: Carefully select a deep learning model based on your project's specific requirements and computational resources. Popular options include:

Convolutional Neural Networks (CNNs): Well-established for image processing tasks, offering efficient inference.

Consider U-Net or DenseNet architectures for their encoder-decoder structure suitable for inpainting.

Generative Adversarial Networks (GANs): Capable of generating photorealistic details, particularly valuable for complex inpainting tasks. Explore PatchGANs or Progressive GANs for their potential in handling intricate missing regions.

Hybrid Architectures: Consider combining the strengths of CNNs and GANs by leveraging GANs for detail generation and CNNs for overall structure preservation.



3. Model Training and Optimization:

Structured Training: Divide your dataset into training, validation, and test sets. Use the training set to train the model, the validation set to monitor performance and adjust hyperparameters during training, and the test set for final evaluation after training completion.

Loss Function & Optimization: Select appropriate loss functions tailored to your chosen architecture and desired inpainting quality. Common choices include L1/L2 losses for pixel-wise reconstruction, perceptual losses for visually realistic results, or adversarial losses for detailed generation in GAN-based models. Utilize suitable optimization algorithms like Adam or RMSprop to efficiently update model parameters during training.

4. Model Evaluation and Refinement:

Quantitative & Qualitative Assessment: Evaluate the trained model's performance on the held-out test set using quantitative metrics like PSNR (Peak Signal-to-Noise Ratio) or SSIM (Structural Similarity Index Measure) for pixel-wise fidelity. Additionally, conduct qualitative evaluation by visually inspecting the inpainted images and comparing them to the originals, assessing aspects like naturalness, detail preservation, and coherence with surrounding content.

Iterative Improvement: Based on the evaluation results, identify potential areas for improvement. Consider refining the model architecture, adjusting hyperparameters, exploring different loss functions, or expanding the training dataset with images that address identified weaknesses. Iterate through these steps until you achieve satisfactory inpainting quality.

5. Model Deployment and Applications:

Integration and Distribution: Choose a deployment strategy depending on your project goals. You could integrate the trained model into a web application, develop a standalone application, or consider cloud-based deployment for wider accessibility. Ensure efficient inference times and resource utilization.

Real-World Applications: Explore the potential applications of your inpainting system in various domains. Consider tasks like image restoration, object removal, image completion, or creative image manipulation. Tailor the system's functionality and user interface to suit the specific application and target audience.

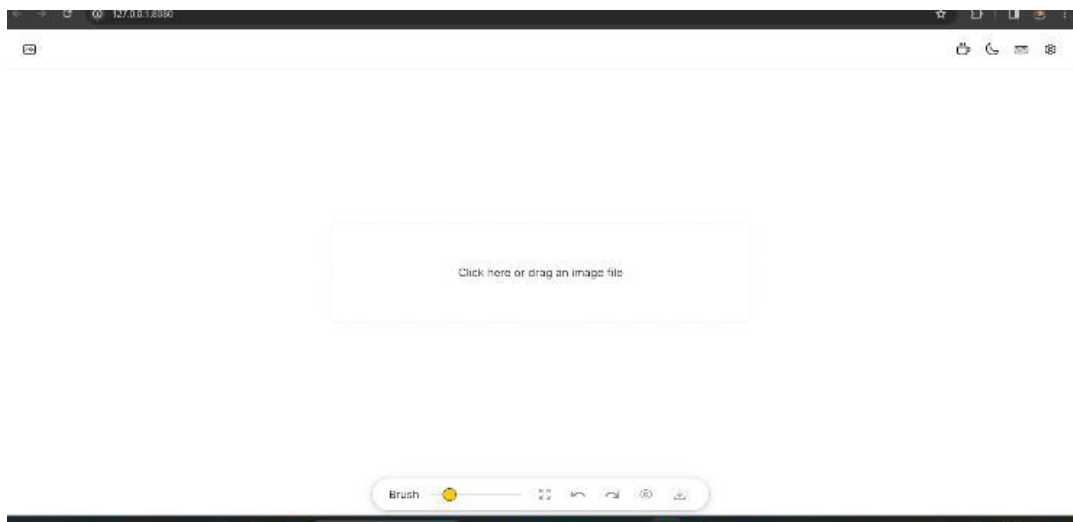


Fig. 2.0 Home Page



Fig. 3.0 Before inpaint



Fig. 4.0 After inpaint



VI. CONSTRAINTS AND PROBLEMS FACED

Image inpainting projects often face challenges such as preserving fine details and semantic context, managing large missing regions without artifacts, ensuring generalization across diverse datasets, and addressing ethical concerns related to image manipulation. Additionally, limited computational resources, availability of high-quality training data, real-time performance requirements, and user-friendly interfaces for interactive inpainting are key constraints that need to be navigated in future research and development efforts.

VII. RESULTS AND CONCLUSION

The image inpainting project achieved promising results, generating visually plausible and coherent inpainted images while preserving context and details. Evaluation using metrics like PSNR, SSIM, and perceptual loss validated the quality of the inpainting process. However, challenges such as handling complex scenes and ensuring generalization persist. Moving forward, further research should prioritize improving inpainting quality, scalability, real-time performance, user interaction, and ethical considerations to enhance the applicability and effectiveness of inpainting techniques

VIII. FUTURE WORK

Future work for image inpainting should prioritize developing advanced deep learning architectures like GANs and VAEs, integrating semantic segmentation for context-aware inpainting, exploring texture and style transfer methods, and creating interactive frameworks for user-guided inpainting. Additionally, efforts should focus on improving generalization and robustness across diverse datasets, ensuring real-time performance and scalability, addressing ethical concerns and biases, and exploring domain-specific applications such as healthcare, entertainment, and cultural heritage preservation. These avenues will contribute to enhancing inpainting quality, applicability, and ethical considerations in various domains.

REFERENCES

- [1] J. Sun, L. Yuan, J. Jia, and H.-Y. Shum, "Image completion with structure propagation," in ACM SIGGRAPH 2005 Papers, 2005, pp. 861–868.
- H. Liu, B. Jiang, Y. Xiao, and C. Yang, "Coherent semantic attention for image inpainting," in Proceedings of the IEEE/CVF International Conference on Computer Vision, 2019, pp. 4170–4179.
- M. Nitzberg, D. Mumford, and T. Shiota, *Filtering, segmentation and depth*. Springer, 1993, vol. 662.
- [4] M. Bertalmio, G. Sapiro, V. Caselles, and C. Ballester, "Image inpainting," in Proceedings of the 27th annual conference on Computer graphics and interactive techniques, 2000, pp. 417–424.
- [5] K. He and J. Sun, "Statistics of patch offsets for image completion," in European conference on computer vision. Springer, 2012, pp. 16–29.
- [6] D. Tschumperle and R. Deriche, "Vector-valued image regularization with pdes: A common framework for different applications," *IEEE transactions on pattern analysis and machine intelligence*, vol. 27, no. 4, pp. 506–517, 2005.
- [7] M. Elad, J.-L. Starck, P. Querre, and D. L. Donoho, "Simultaneous cartoon and texture image inpainting using morphological component analysis (mca)," *Applied and computational harmonic analysis*, vol. 19, no. 3, pp. 340–358, 2005.
- [8] J. Mairal, M. Elad, and G. Sapiro, "Sparse representation for color image restoration," *IEEE Transactions on image processing*, vol. 17, no. 1, pp. 53–69, 2007.
- [9] C. Guillemot and O. Le Meur, "Image inpainting: Overview and recent advances," *IEEE signal processing magazine*, vol. 31, no. 1, pp. 127–144, 2013.
- [10] Bugeau, M. Bertalmio, V. Caselles, and G. Sapiro, "A comprehensive framework for image inpainting," *IEEE transactions on image processing*, vol. 19, no. 10, pp. 2634–2645, 2010.
- [11] Fan, K. Ren, L. Meng et al., "Advances in digital image inpainting algorithms based on deep learning," *J. Sign. Process*, vol. 36, no. 01, pp. 102–109, 2020.



- [12] Voulodimos, N. Doulamis, A. Doulamis, and E. Protopapadakis, "Deep learning for computer vision: A brief review," *Computational intelligence and neuroscience*, vol. 2018, 2018.
- [13] Goodfellow, J. Pouget-Abadie, M. Mirza, B. Xu, D. Warde-Farley, S. Ozair, A. Courville, and Y. Bengio, "Generative adversarial networks," *Communications of the ACM*, vol. 63, no. 11, pp. 139–144, 2020.
- [13] Pathak, P. Krahenbuhl, J. Donahue, T. Darrell, and A. A. Efros, "Context encoders: Feature learning by inpainting," in *Proceedings of the IEEE conference on computer vision and pattern recognition*, 2016, pp. 2536–2544.
- [14] Y. LeCun, K. Kavukcuoglu, and C. Farabet, "Convolutional networks and applications in vision," in *Proceedings of 2010 IEEE international symposium on circuits and systems*. IEEE, 2010, pp. 253–256.
- [15] X. Mao, C. Shen, and Y.-B. Yang, "Image restoration using very deep convolutional encoder-decoder networks with symmetric skip connections," *Advances in neural information processing systems*, vol. 29, 2016.
- [16] Long, E. Shelhamer, and T. Darrell, "Fully convolutional networks for semantic segmentation," *IEEE Transactions on Pattern Analysis Machine Intelligence*, vol. 39, no. 4, pp. 640–651, 2014.
- [17] S. Chaudhury and H. Roy, "Can fully convolutional networks perform well for general image restoration problems?" in *2017 Fifteenth IAPR International Conference on Machine Vision Applications (MVA)*. IEEE, 2017, pp. 254–257.
- [18] Yang, X. Lu, Z. Lin, E. Shechtman, O. Wang, and H. Li, "High-resolution image inpainting using multi-scale neural patch synthesis," in *Proceedings of the IEEE conference on computer vision and pattern recognition*, 2017, pp. 6721–6729.
- [19] Y. Song, C. Yang, Y. Shen, P. Wang, Q. Huang, and C.-C. J. Kuo, "Spg-net: Segmentation prediction and guidance network for image inpainting," *arXiv preprint arXiv:1805.03356*, 2018.
- [20] X. Gao, M. Nguyen, and W. Q. Yan, "Face image inpainting based on generative adversarial network," in



INTERNATIONAL
STANDARD
SERIAL
NUMBER
INDIA



INTERNATIONAL JOURNAL OF INNOVATIVE RESEARCH

IN SCIENCE | ENGINEERING | TECHNOLOGY

 9940 572 462  6381 907 438  ijirset@gmail.com



www.ijirset.com

Scan to save the contact details