



e-ISSN: 2319-8753 | p-ISSN: 2347-6710

IJIRSET

International Journal of Innovative Research in
SCIENCE | ENGINEERING | TECHNOLOGY



INTERNATIONAL JOURNAL OF INNOVATIVE RESEARCH

IN SCIENCE | ENGINEERING | TECHNOLOGY

Volume 13, Issue 3, March 2024

ISSN INTERNATIONAL
STANDARD
SERIAL
NUMBER
INDIA

Impact Factor: 8.423



9940 572 462



6381 907 438



ijirset@gmail.com



www.ijirset.com

Autonomous Parking System

Ashwini Nair, Yatri Shah, Hardik Jethwa, Yash Chaudhari, Himadri Vegad

U.G. Student, CSE-PIET, Parul University, Vadodara, Gujarat, India

U.G. Student, CSE-PIET, Parul University, Vadodara, Gujarat, India

U.G. Student, CSE-PIET, Parul University, Vadodara, Gujarat, India

U.G. Student, CSE-PIET, Parul University, Vadodara, Gujarat, India

Assistant Professor, CSE-PIET, Parul University, Vadodara, Gujarat, India

ABSTRACT: Abstract: An autonomous parking system using sensors is an innovative technology that allows vehicles to park themselves without human intervention. This technology uses a combination of sensors, cameras, and algorithms to detect and analyze the parking space and guide the vehicle into the designated spot. The system works by scanning the surrounding environment to identify a suitable parking space. Once a space is found, the vehicle uses (IR) sensors to determine the size and shape of the parking spot. The (IR)sensors also help the vehicle navigate into space without hitting any obstacles. The autonomous parking system offers several benefits, including improved safety, convenience, and efficiency. It eliminates the need for drivers to navigate through crowded parking lots, reducing the risk of accidents and collisions. It also reduces the time required to park a vehicle, freeing up drivers to focus on other tasks. Overall, the autonomous parking system using sensors represents a significant step forward in automotive technology.

KEYWORDS: IOT,Sensor,Parking,Autonomous,Vehicle.

I. INTRODUCTION

The need for safer, more efficient, and convenient parking solutions has become increasingly evident in modern urban environments. Traditional parking systems, reliant on human drivers to navigate crowded lots and locate suitable spots, often result in stress, time consumption, and accidents. Moreover, as cities grow more congested and parking spaces scarcer, the demand for efficient solutions has surged, exacerbating congestion and wait times. In response, autonomous parking systems have emerged as a promising solution, aiming to automate parking processes and alleviate driver burdens. However, before this technology can become mainstream, significant challenges must be addressed. Key among these challenges is ensuring system reliability and accuracy in detecting and avoiding obstacles, including pedestrians, vehicles, and stray objects. The scope of an autonomous parking system is broad, encompassing various areas such as technology, safety, efficiency, and convenience. Technologically, the system involves the development of advanced sensors, cameras, and algorithms capable of accurately analyzing parking spaces and guiding vehicles into designated spots. This encompasses a range of cutting-edge technologies, including artificial intelligence, machine learning, and computer vision. Additionally, safety considerations are paramount, requiring robust fail-safe mechanisms and collision avoidance systems to prevent accidents and ensure pedestrian and vehicle safety. Moreover, efficiency is a key focus, with autonomous parking systems aiming to optimize parking space utilization, reduce congestion, and minimize environmental impact through reduced emissions and fuel consumption. Ultimately, the goal of autonomous parking systems is to revolutionize the parking experience, making it safer, more efficient, and convenient for all stakeholders involved.

II. METHODS AND MATERIALS

Hardware Module :

The hardware module will comprise a microcontroller referred to as "sensors" along with power supply components. This integrated system of hardware elements will gather data and relay it to processing computers for subsequent analysis and visualization.

LCD Display

An LCD display can show a visual representation of the car's surroundings, including the distance between the car and obstacles. It can provide guidance to the driver on where to park the vehicle.

Cables and Connectors

Cables and connectors are used to transmit signals and data between various components of the autonomous parking system. For example, cables and connectors can be used to connect sensors to the control unit, allowing the system to receive information about the environment and adjust the vehicle's movement accordingly.

PCBs and Breadboards

Printed Circuit Boards (PCBs) offer a dependable and effective foundation for constructing the ultimate circuits, whereas breadboards enable swift prototyping and evaluation of circuit designs. Utilizing these resources, engineers can guarantee that the electronic circuits within the autonomous parking system are sturdy, dependable, and fulfill the system's performance criteria.

IR Sensors

An IR sensor is an electronic apparatus engineered to emit light with the intention of detecting nearby objects. This sensor is capable of not only gauging an object's warmth but also discerning its movement. Within the infrared spectrum, many objects emit a specific degree of thermal radiation, usually imperceptible to the human eye but detectable by IR sensors.

LED

LEDs within an autonomous parking system have a vital function in delivering status indication, sensor illumination, safety lighting, and energy conservation. Integration of LEDs enhances the efficiency and effectiveness of the autonomous parking system, thereby enhancing the safety and convenience of the parking procedure.

Arduino UNO R3

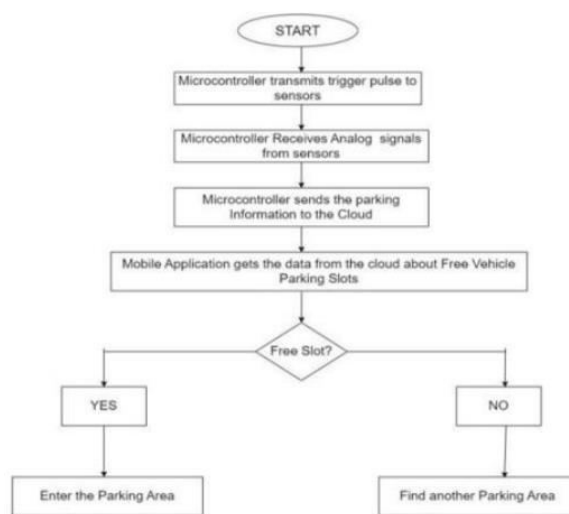
Arduino board designs employ a diverse array of controllers and microprocessors. The input/output (I/O) pins on these boards, encompassing both digital and analog options, can be connected to various expansion boards—commonly referred to as "shields"—or breadboards for prototyping, as well as other circuits. These boards come equipped with built-in serial communication ports, and certain variations even feature Universal Serial Bus (USB) connectivity for program loading. The Arduino software language serves as a standard API utilized by C and C++ programming languages to code the microcontrollers. This language, which is based on the Processing IDE, provides a modified version of the Processing language. Moreover, the Arduino project offers a command-line tool and an integrated coding environment (IDE) alongside the traditional compiler toolchains.

Integrated Circuits

ICs are used in sensors used in an autonomous parking system to amplify, filter, and process signals. They are used to perform computations, logic operations, and data storage, making them an essential component of the control unit

Node MCU

NodeMCU, abbreviated for Node MicroController Unit, is a development platform that embraces open-source software and hardware principles. It revolves around a cost-effective System-on-a-Chip (SoC) named ESP8266. Manufactured by Espressif Systems, this ESP8266 integrates essential computer components such as a CPU, RAM, networking capabilities (WIFI), and even a modern operating system and software development kit (SDK). These functionalities make it an exceptionally viable choice for various Internet of Things (IoT) endeavours. Atmega Microcontroller The Atmega microcontroller is designed to perform a variety of functions in a system, including controlling and processing data from sensors, communicating with other devices, and controlling actuators and other hardware components.



1.1.PROJECT FLOW

III. RESULTS AND DISCUSSION

The development of our autonomous parking system involves the integration of several cutting-edge technologies, including sensors, control systems, and software. Specifically, our project offers real-time information display on mobile devices, providing efficient access anywhere in the world. This represents a significant advancement over previous immobile screen displays, enhancing convenience and accessibility for users. As demand for smarter parking solutions continues to rise, the progress of our system is poised to evolve further, potentially revolutionizing the way we park and utilize our vehicles.

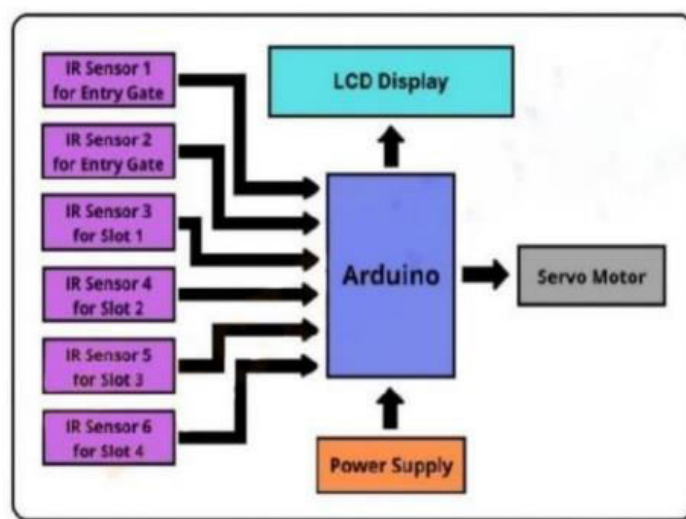
Looking ahead, there are numerous avenues for future work in the development of autonomous parking systems. Integration with smart parking systems holds promise, enabling enhanced communication with parking infrastructure to locate available spaces more efficiently. Improvements in sensor technology are essential for enhancing accuracy and reliability in obstacle detection within parking environments. Leveraging machine learning and artificial intelligence could bolster the system's decision-making capabilities and adaptability to diverse parking scenarios.

Additionally, rigorous testing and validation efforts are crucial to ensuring the system's safety and reliability in real-world conditions. Future research could focus on refining sensor precision and algorithmic accuracy, alongside the development of advanced navigation and mapping functionalities. Integration with complementary technologies, such as smart infrastructure or mobile applications, offers opportunities to enrich system functionality and user experience. Exploration of new business models presents another avenue for innovation, with potential applications including premium autonomous parking services offered by parking facility operators or integration with transportation services like ride-sharing or car rental companies. This highlights the multifaceted nature of autonomous parking system development and the diverse opportunities for advancement and integration across various domains. Overall, continued research and development efforts are essential for realizing the full potential of autonomous parking systems in enhancing urban mobility and convenience.

In our project, we commenced by assembling a variety of IoT devices, including LCD displays, cables, connectors, PCBs, breadboards, IR sensors, Arduino UNO R3, and Node MCU. These components formed the foundation of our autonomous parking system, serving as key elements in the system's hardware infrastructure. Through meticulous integration and connection of these devices, we established a cohesive framework capable of supporting the functionalities required for our project objectives.

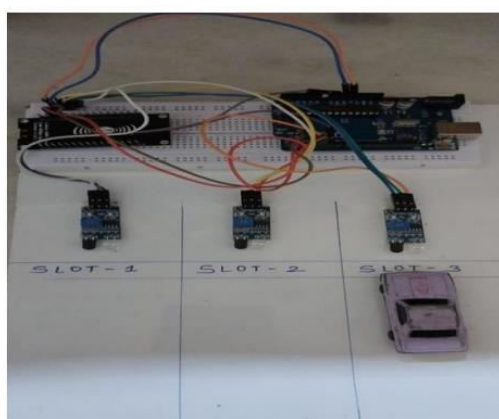
To facilitate simulation and testing of our autonomous parking system, we leveraged Blynk IoT, a versatile platform renowned for its effectiveness in IoT device management and visualization. By integrating our hardware setup with Blynk IoT, we achieved seamless communication and control over the system components, enabling real-time

monitoring and interaction for simulation purposes. This integration proved instrumental in validating the functionality and performance of our autonomous parking system in a simulated environment. Furthermore, the utilization of Blynk IoT provided invaluable insights into the system's behaviour and functionality, allowing us to refine and optimize various aspects of the project. Through iterative testing and experimentation within the Blynk IoT environment, we were able to identify potential areas for improvement and implement necessary adjustments to enhance system reliability, efficiency, and user experience.



1.2.BLOCK DIAGRAM OF PARKING SYSTEM

Overall, the integration of IoT devices and Blynk IoT platform played a pivotal role in the development and testing phases of our autonomous parking system project. By leveraging these technologies effectively, we laid a solid foundation for the successful implementation and deployment of our system, paving the way for future advancements and innovations in smart parking solutions.



1.3 DEMONSTRATION OF PARKING SYSTEM

IV. CONCLUSION

In conclusion, the development of our autonomous parking system involves the integration of several technologies which include sensors, control systems and software, to be more specific our project displays the information in a real time basis on handy platforms such as mobile devices which makes it efficient, previously it was displayed on screens which were immobile whereas we provide access anywhere in the world. The progress of this system is going to



continue as demand for smarter parking solutions increases. In short we can revolutionize the way we park and use our vehicles.

REFERENCES

- [1] IoT based Car Parking Management System using IR Sensor Muhamad Muzhafar Abd Kadir , Mohd Nizam Osman , Nor Arzami Othman , Khairul Anwar Sedek, Faculty of Computer and Mathematical Sciences, University Technology Mara, Perlis Branch, Arau, Perlis, Malaysia Corresponding author Received Date: 1 September 2020 Accepted Date: 9 October 2020
- [2] Automatic Car Parking System using IR Sensors B. Ramya Sri , A. Monika , G. Gowry Naga Sravanthi , D.Drona Akshay Kumar , CH. Papa Rao5 Student , MTech.(Ph.D.)Associate professor5 Department of Electronics and Communication Engineering Tirumala Engineering College, Andhra Pradesh, India.
- [3] SMART PARKING VACANCY SYSTEM USING IOT Hrishikesh Shinde, Sourabh Pisal, Shripad Kanpude, Anubhav Jagadhane, Dr. D.Y Patil Institute Of Technology, Pimpri Savitribai Phule Pune University, India /August-2022.
- [4] Semi-Autonomous Parking system for Automatic Transmission vehicles S. S. Ohol , S. Kavar Department of Mechanical Engineering, Department of Automotive Technology, College of Engineering, Pune [COEP], Wellesley Raod, Shivajinagar.
- [5] Automatic Smart Car Parking System ,Janhvi Nimble, Priyanka Bhegade, Snehal Surve, Priya Chaugule ,Nutan Maharashtra Institute of Engineering Technology, Pune. March 2016



INTERNATIONAL
STANDARD
SERIAL
NUMBER
INDIA



INTERNATIONAL JOURNAL OF INNOVATIVE RESEARCH

IN SCIENCE | ENGINEERING | TECHNOLOGY

 9940 572 462  6381 907 438  ijirset@gmail.com



www.ijirset.com

Scan to save the contact details