



e-ISSN: 2319-8753 | p-ISSN: 2347-6710

IJRSET

International Journal of Innovative Research in
SCIENCE | ENGINEERING | TECHNOLOGY

INTERNATIONAL JOURNAL OF INNOVATIVE RESEARCH

IN SCIENCE | ENGINEERING | TECHNOLOGY

Volume 13, Issue 5, May 2024

ISSN INTERNATIONAL
STANDARD
SERIAL
NUMBER
INDIA

Impact Factor: 8.423

9940 572 462

6381 907 438

ijirset@gmail.com

www.ijirset.com

Guisture of Signature Detection and Verification Using Deep Learning

M. Shivani, K. Venkata Ramya, Dr. D. J. Samatha Naidu

P.G. Student, Department of Master of Computer Applications, Annamacharya PG College of Computer Studies,
Rajampet, Andhra Pradesh, India

Assistant Professor, Department of Master of Computer Applications, Annamacharya PG College of Computer Studies,
Rajampet, Andhra Pradesh, India

Principal, Department of Master of Computer Applications, Annamacharya PG College of Computer Studies,
Rajampet, Andhra Pradesh, India

ABSTRACT: Signatures are popularly used as a method of personal identification and confirmation. Many certificates such as bank checks and legal activities need signature verification. Verifying the signature of a large number of documents is a very difficult and time-consuming task. As a result, explosive growth has been observed in biometric personal verification and authentication systems that relate to unique quantifiable physical properties (fingerprints, hand, and face, ear, iris, or DNA scan) or behavioural characteristics (gait, sound, etc.). Several methods are used to describe the ability of the suggested system in specifying the genuine signatures from the forgeries. This approach presents a new technique for signature verification and recognition, using a tow dataset for training the model by a Siamese network.

KEYWORDS: Signature recognition; signature verification; Siamese network; convolutional network; triplet loss

I. INTRODUCTION

Today handwritten signatures popularly used and acceptable means of biometric authentication. There are two cases of signature verification: Online and offline verification systems. Usually online more useful than offline, because of the availability of information like stroke order, writing speed, pressure, etc. But these performances need the cost for special hardware for recording the pen-tip path, improving its system cost, and decreasing the actual application situations. In the offline system, just a static image of the signature is available, it is more complicated than an online system because dynamic information is not available and it is hard to reach them from the offline images. Offline signature verification depends on pattern recognition, signatures are described using fixed-size feature vectors. There are multiple ways for signature verification, one of them is by using graphs and structural pattern recognition. Graphs allow extra powerful descriptions that can be useful for signature verification, for instance, by taking local information in nodes and their relationships in the global structure using edges.

II. LITERATURE REVIEW

[1] L. & R. D. & S. R. & G. E. & M. P. Batista, "State of the art in offline signature verification," **Pattern Recognition Technologies and Applications: Recent Advances**, pp. 39-62, 2008.

This paper likely provides an overview of the state-of-the-art techniques and methodologies in offline signature verification, focusing on the recognition and authentication of handwritten signatures using pattern recognition technologies. It may cover various aspects such as feature extraction, classification algorithms, dataset considerations, and evaluation metrics used in signature verification systems. This reference could be valuable for researchers and practitioners interested in understanding the advancements and challenges in the field of offline signature verification.

[2] P. K. Y. K. R. K. B. V. K. R. a. P. L. M. Ramachandra A C, "Cross- Validation for Graph Matching based Offline Signature Verification," **India Conference INDICON 2008**, 2008.

This paper likely presents a study on cross-validation techniques applied to graph matching-based offline signature verification. Graph matching methods are often used in signature verification systems to analyze and compare the structural features of handwritten signatures. Cross-validation is a technique used to assess the performance and generalization capability of machine learning or pattern recognition models. This work may explore different cross-

validation strategies tailored specifically for graph matching-based signature verification algorithms, aiming to validate the effectiveness and robustness of these techniques. This reference could be valuable for researchers interested in improving the evaluation and validation processes in signature verification systems.

[3] B. S. K. T. a. B. D., "Features Extraction and Verification of Signature Image using Clustering Technique," International Journal of Smart Home, pp. 113-116, 2010.

This paper likely discusses a method for feature extraction and verification of signature images using clustering techniques. Feature extraction is a critical step in signature verification systems, where relevant information is extracted from signature images to facilitate comparison and authentication. Clustering techniques may be employed to group similar signature patterns or characteristics together. The paper may present a novel approach for extracting discriminative features from signature images based on clustering algorithms, followed by a verification process to authenticate signatures using the extracted features. This reference could be valuable for researchers interested in exploring clustering-based methods for signature verification and feature extraction.

[4] B. H. a. P. N. 2001, "A new signature verification technique based on a two-staged neural network classifier," Engineering Applications of Artificial Intelligence, pp. 95-103, 2001.

This paper likely introduces a novel signature verification technique based on a two-staged neural network classifier. Signature verification is a crucial task in various applications such as banking, legal documents, and authentication systems. The proposed technique may involve using neural network architectures to analyze and classify signature features for verification purposes. The two-staged approach could imply that the verification process is divided into two stages, possibly involving feature extraction and classification stages. The paper likely presents experimental results and performance evaluations of the proposed technique compared to existing methods. This reference could be valuable for researchers interested in neural network-based approaches to signature verification and authentication.

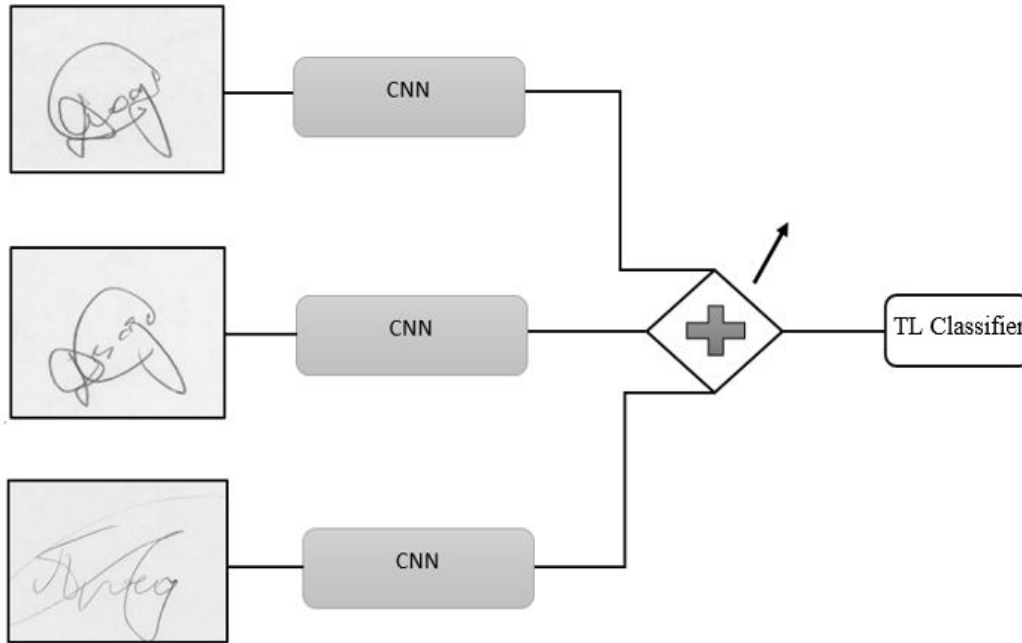
[5] E. & Ş. T. & K. M. Özgündüz, "Offline Signature Verification and Recognition by Support Vector Machine," Eusipco-2005, pp. 4-8, 2005.

This paper likely discusses the application of support vector machine (SVM) algorithms for offline signature verification and recognition. SVM is a powerful machine learning technique commonly used for classification tasks, including signature verification. The paper may present a method for training SVM models using features extracted from offline signature images to differentiate between genuine and forged signatures. Additionally, it may explore techniques for signature recognition, which involves identifying individuals based on their handwritten signatures. The paper could include experimental results demonstrating the effectiveness of SVM-based approaches for signature verification and recognition tasks. This reference could be valuable for researchers interested in SVM-based techniques for signature analysis and authentication.

III. PROPOSED ALGORITHMS AND TECHNIQUES

Siamese neural network is a class of network architectures that usually contains two or more identical subnet functions if used with triple loss or other metrics that require more than two entries. CNN's have the same configuration with the same parameters and common weights. Deep convolutional neural networks (CNN) are.

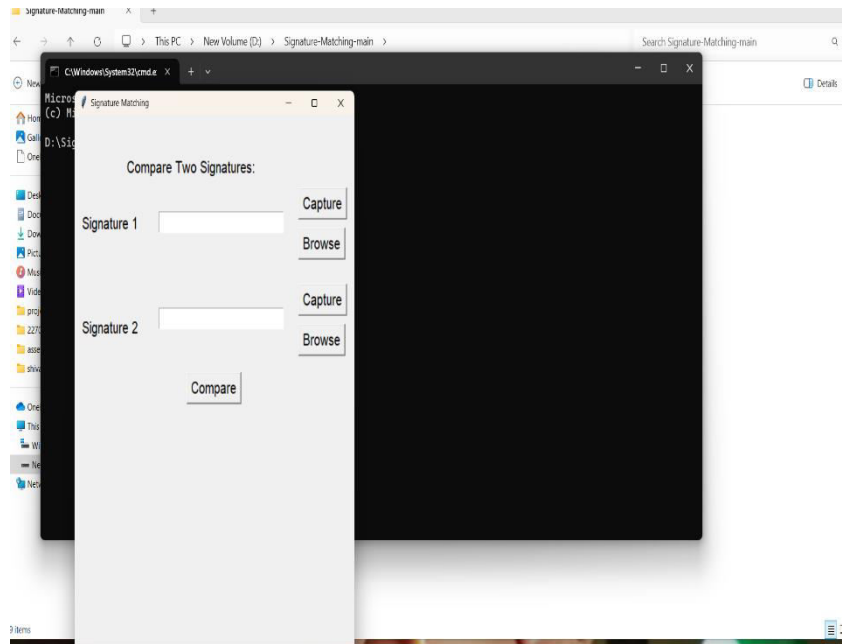
SYSTEM ARCHITECTUR



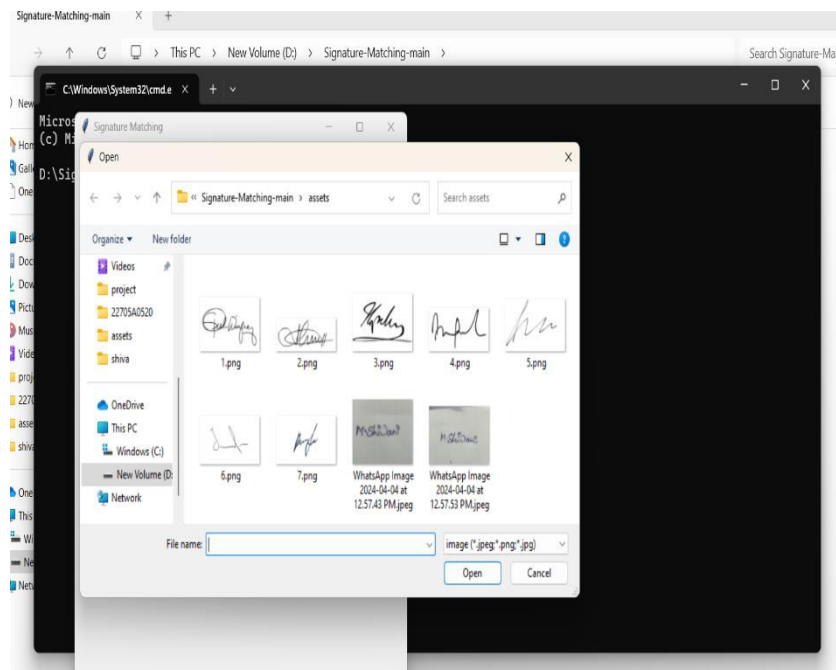
IV. EXISTING ALGORITHM

DTW is a technique used for measuring similarity between two sequences that may vary in time or speed. In signature recognition, DTW can be used to compare two signature trajectories and compute a similarity score. HMMs are statistical models that represent a system with unobservable (hidden) states and observable outputs. In signature recognition, HMMs can be used to model the temporal evolution of signature features and classify signatures based on their probability distributions. SVMs are supervised learning models used for classification and regression analysis. In signature recognition, SVMs can be trained on extracted features from signature images to classify signatures into different categories. Convolutional Neural Networks (CNNs): CNNs have been widely used for image recognition tasks, including signature recognition. They can automatically learn hierarchical features from signature images. Recurrent Neural Networks (RNNs): RNNs, particularly Long Short-Term Memory (LSTM) networks, can capture sequential information in signature trajectories, making them suitable for dynamic signature recognition tasks. Siamese networks are neural networks designed to learn similarity between two input samples. In signature recognition, Siamese networks can be trained to learn a similarity metric between pairs of signatures, useful for tasks like signature verification. Graph-based methods represent signatures as graphs, where nodes represent key points (e.g., intersections, endpoints) and edges represent the connections between them. Techniques like graph matching or graph convolutional networks can be applied to compare and classify signature graphs. Extracting handcrafted features from signature images, such as edge histograms, curvature information, or Gabor features, and using traditional machine learning classifiers like k-Nearest Neighbors (k-NN) or Random Forests for recognition. Template matching involves comparing a given signature image against a set of template images using techniques like correlation-based matching.

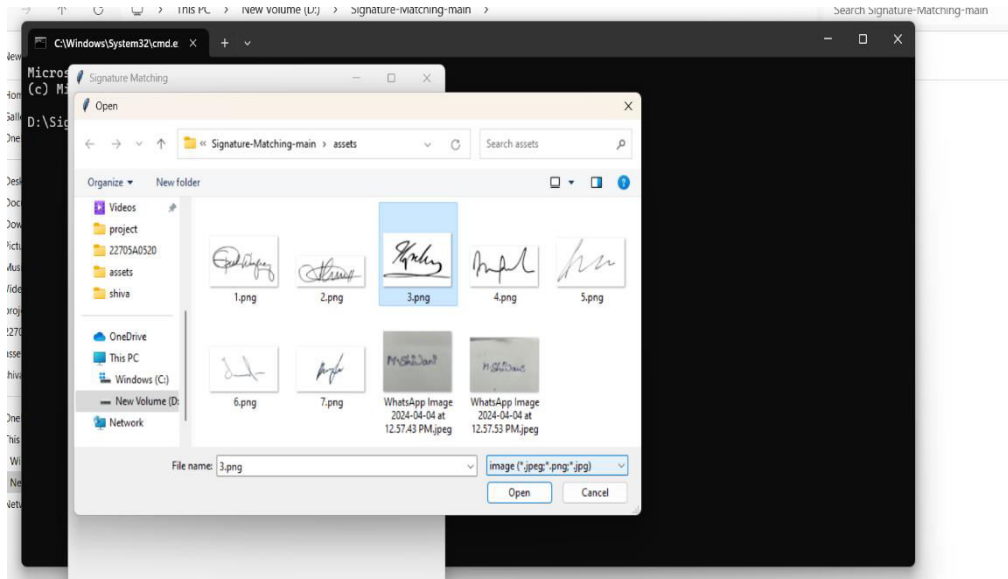
V. RESULT ANALYSIS



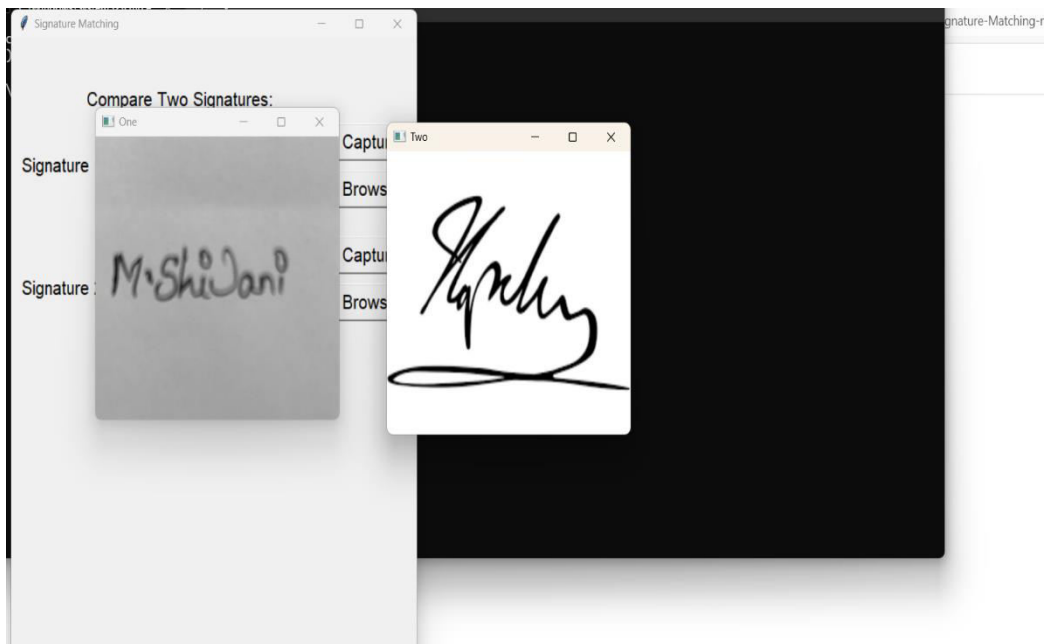
SCREEN 3: COMPARE TWO SIGNATURES



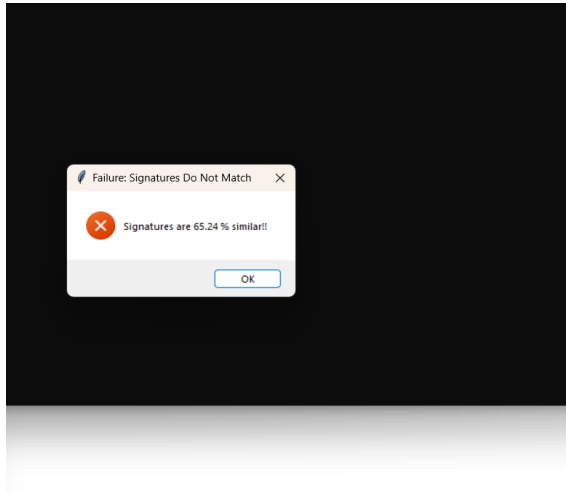
SCREEN 4: UPLOAD FIRST SIGNATURE



SCREEN 5: UPLOAD SECOND SIGNATURE



SCREEN 6: ANALYSING THE TWO SIGNATURES



VI. CONCLUSION

This research executed a perfect handwriting signature verification method utilizing a fully SNN clarification. Scheme methodology consists of data acquisition, preprocessing, feature selection, and extraction using CNN, classification, and evaluation through triple loss. In this scheme, we separate the data into three sections, unique Anchor images, positive images that are too unique but practiced for testing and comparison with Anchors, and the last is negative images that are copied images. The system has been trained on Ubuntu 18.04 on CPU by TensorFlow Methods, Ubuntu is fast and safer than Windows, and TensorFlow and Python Packs can be easily downloaded from any other systems. With TensorFlow we can comfortably perform the CNN architecture.

ACKNOWLEDGEMENT

We thank full to all the referred journal authors for their elaborative study helps me to write this paper.

REFERENCES

1. L. & R. D. & S. R. & G. E. & M. P. Batista, "State of the art in offline signature verification," *Pattern Recognition Technologies and Applications: Recent Advances*, pp. 39-62, 2008.
2. P. K. Y. K. R. K. B. V. K. R. a. P. L. M. Ramachandra A C, "Cross Validation for Graph Matching based Offline Signature Verification," *India Conference INDICON 2008*, 2008.
3. B. S. K. T. a. B. D., "Features Extraction and Verification of Signature Image using Clustering Technique," *International Journal of Smart Home*, pp. 113-116, 2010.
4. B. H. a. P. N. 2001, "A new signature verification technique based on a two-staged neural network classifier," *Engineering Applications of Artificial Intelligence*, pp. 95-103, 2001.
5. E. & Ş. T. & K. M. Gundu, "Offline Signature Verification and Recognition by Support Vector Machine," *Eusipco-2005*, pp. 4-8, 2005.
6. H. B. , & d. P. J. Coetzer J., "Off-line signature verification using the discrete radon transform and a hidden Markov model," *URASIP Journal on Applied Signal Processing*, 2004.
7. N. W. S. S. S. M. J. C. Kyle Martin, "A Convolutional Siamese Network for Developing Similarity Knowledge in the Self BACK Dataset," *ICCB 2017*, pp. 85-94, 2017.
8. Y. Q. B. Haunt, "Signature verification using global and grid features," *Pattern Recognition*, pp. 1621-1629, 1994.
9. A. D. J. I. T. S. K. J. L. U. P. Sounak Deya, "Signets: Convolutional Siamese Network for Writer Independent Offline Signature Verification," *Pattern Recognition Letters*, pp. 1-7, 2017.
10. A. S. Shruti Jadon, "Siamese Networks for One Shot Learning using Kernel Based Activation functions," *EasyChair Preprint*, pp. 112, 2019.
11. L. B. B. L. Alexander Hermans, "In Defence of the Triplet Loss for Person Re-Identification," *Computer Vision and Pattern Recognition*, pp. 1-17, 2017.
12. D. K. J. P. Florian Schroff, "Face Net: A Unified Embedding for face Recognition and Clustering," *IEEE Conference on Computer Vision and Pattern Recognition (CVPR)*, pp. 1-10, 2015.



INTERNATIONAL
STANDARD
SERIAL
NUMBER
INDIA



INTERNATIONAL JOURNAL OF INNOVATIVE RESEARCH

IN SCIENCE | ENGINEERING | TECHNOLOGY

 9940 572 462  6381 907 438  ijirset@gmail.com



www.ijirset.com

Scan to save the contact details