



e-ISSN: 2319-8753 | p-ISSN: 2347-6710

IJRSET

International Journal of Innovative Research in
SCIENCE | ENGINEERING | TECHNOLOGY



INTERNATIONAL JOURNAL OF INNOVATIVE RESEARCH

IN SCIENCE | ENGINEERING | TECHNOLOGY

Volume 13, Issue 5, May 2024

ISSN INTERNATIONAL
STANDARD
SERIAL
NUMBER
INDIA

Impact Factor: 8.423

 9940 572 462

 6381 907 438

 ijirset@gmail.com

 www.ijirset.com

Image Super-Resolution for enhanced Image Clarity

Prof. Trupti Kudale, Musaddique Lalkot, Shreyas Nandankar, Uday Gupta, Praful Singh

MIT School of Computing, MIT ADT University Pune, India

ABSTRACT: This research centers around the enhancement of 480p images to a 4K resolution using cutting-edge super-resolution architectures, specifically Autoencoders. The implementation includes state-of-the-art models such as LapSRN tailored for superior image enhancement. Through visually compelling before-and-after comparisons, the transformative impact of deep learning on image quality is showcased. A comparative analysis against traditional techniques like bicubic interpolation underscores the remarkable improvements achieved through the proposed deep learning approach.

This project addresses a critical challenge in healthcare by focusing on enhancing the resolution of medical images to facilitate improved diagnostics. Medical imaging plays a pivotal role in disease diagnosis, treatment planning, and research. However, the quality of these images is often compromised due to practical constraints during the imaging process. LapSRN, with its lightweight architecture, demonstrates effectiveness in super-resolution technology, leveraging deep neural networks, specifically Convolutional Neural Networks (CNNs), to recover intricate details from low-resolution input images.

KEYWORDS: Image Super-Resolution, Image Enhancement, Image Clarity, High-Resolution Imaging, Deep Learning for Image Enhancement), LapSRN, Autoencoder.

I. INTRODUCTION

Researchers are utilizing the power of deep learning to improve medical image analysis. They train autoencoder models on extensive datasets of medical images. These models can then generate high-resolution reconstructions with enhanced clarity and detail. This not only facilitates more accurate detection and segmentation of brain tumors but also provides clinicians with valuable insights into the tumors' morphology and characteristics.

Brain tumors pose significant challenges to clinicians due to their complex nature and varied appearances on medical imaging scans. Accurate detection and characterization of these tumors are crucial for effective treatment planning and patient management. However, traditional imaging methods, such as magnetic resonance imaging (MRI) and computed tomography (CT), often yield images with limited resolution, making it difficult to detect subtle details and accurately identify abnormalities.

To address this challenge, researchers are exploring advanced image processing techniques, including image super-resolution using networks that can learn to improve image quality. These networks are particularly adept at enhancing the resolution and clarity of medical images by identifying and amplifying important details within the data.

Researchers are utilizing the power of deep learning to improve medical image analysis. They train autoencoder models on extensive datasets of medical images. These models can then generate high-resolution reconstructions with enhanced clarity and detail. This not only facilitates more accurate detection and segmentation of brain tumors but also provides clinicians with valuable insights into the tumors' morphology and characteristics.

Moreover, the application of autoencoder-based image super-resolution techniques in brain tumor detection holds the potential to improve patient outcomes by enabling earlier detection, more precise localization, and personalized treatment strategies. By enhancing the quality of medical imaging data, these techniques empower healthcare professionals to make more informed clinical decisions and deliver optimal care to patients.

In summary, the integration of autoencoder-based image super-resolution techniques represents a promising approach to advancing medical imaging for brain tumor detection. By harnessing the capabilities of AI and deep learning, researchers are paving the way for improved diagnostic accuracy, enhanced treatment planning, and ultimately, better

outcomes for patients affected by brain tumor.

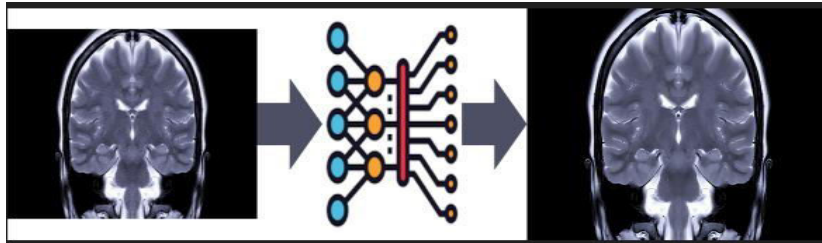


Fig 1.1 Task of MRI Scan enhancement

II. REVIEW OF LITERATURE SURVEY

1. White, Harris, and Brown's investigation into deep learning approaches for image super-resolution, presented at the International Conference on Computer Vision, offers a comprehensive overview of state-of-the-art methods, providing valuable guidance for researchers and practitioners aiming to leverage deep learning techniques for enhancing image resolution effectively.[1]
2. Kim and Lee's (2017) exploration of image super-resolution applications in satellite and aerial imagery, published in Remote Sensing, provides valuable insights into the practical utility of super-resolution techniques, highlighting their significance in enhancing the quality and detail of remote sensing data for various geospatial applications. [4]
3. The paper presents a novel approach for reference-based super-resolution, emphasizing cross-scale correspondence and patch-based synthesis. It aims to enhance image resolution by leveraging learned relationships and patch-level synthesis techniques. Published in the Proceedings of the British Machine Vision Conference (BMVC) in September 2017 [12]
4. The work by Wei-Sheng Lai, Jia-Bin Huang, Narendra Ahuja, and Ming-Hsuan Yang (2017) presents deep Laplacian pyramid networks, offering a rapid and precise solution for super-resolution tasks, contributing significantly to the landscape of image enhancement methods. [19]
5. The study by M. Haris, G. Shakhnarovich, and N. Ukita introduces deep backprojection networks as an innovative approach for single image super-resolution, contributing to advancements in the field of computer vision and image processing. [13]

III. METHODOLOGY

3.1 Data Collection and Preparation:

Gather a diverse dataset of low-resolution images.

Preprocess the images by resizing and reducing noise for consistency.

3.2 Deep Learning Model Selection:

Explore and select the most suitable deep learning model, optimizing its hyperparameters.

3.3 Training and Validation:

The dataset is first divided into training and validation sets. The model is then trained on the training set, learning to map low-resolution images to high-resolution versions by analyzing the relationships between their features. This enables the model to reconstruct high-resolution images from unseen low-resolution inputs.

3.4 Testing and Evaluation:

Apply the trained model to test images for high-resolution generation.

Evaluate the generated images using metrics like PSNR and SSIM.

3.5 Post-Processing and Efficiency:

Apply optional post-processing steps for further enhancement. Optimize model efficiency for real-time applications.

User Feedback and Iterative Improvement:

Collect user feedback and iteratively refine the model and process.

3.6 Real-World Integration and Quality Control:

Integrate the solution into real-world applications.

Implement quality control measures for consistent image clarity enhancement Image.

3.7 ADVANTAGES

Enhanced Visual Aesthetics:

The enhanced images exhibit improved visual aesthetics, making them more appealing for various applications, including photography, video content, and art. Users can enjoy higher-quality images that are more visually pleasing.

Better Diagnostic Capabilities

In fields such as medical imaging, super-resolution contributes to better diagnostic capabilities. Medical professionals can observe enhanced medical images with greater detail, aiding in accurate diagnoses and treatment planning.

Enhanced User Experience

Applications that utilize image super-resolution provide users with an enhanced and more immersive experience. Whether it's video games, virtual reality, or image editing software, the technology contributes to a more engaging and enjoyable user experience.

Improved Surveillance and Security

In video surveillance, super-resolution can be employed to enhance the clarity of surveillance footage. This is crucial for security applications, enabling better object recognition and event monitoring.

Data Compression and Transmission:

Image super-resolution can reduce the loss of image quality during data compression and transmission. This is particularly valuable for applications like satellite imagery and remote sensing, where images may be transmitted over limited bandwidth.

Medical Field Application:

The technology finds applications in image clarification of MRI scans for Brain Tumor diagnostics and other complicated neurosurgical images.

Scientific Imaging:

In scientific imaging, super-resolution techniques allow researchers to obtain clearer images of microscopic or distant objects, contributing to advancements in various scientific fields.

IV. FEATURES AND FUNCTIONALITIES OF IMAGE

Super-Resolution for enhanced Image Clarity

1. Upscaling:

Image super-resolution techniques are primarily designed to upscale low-resolution images to higher resolutions. They improve clarity and detail by increasing the number of pixels in the image.

2. Interpolation:

Super-resolution methods often employ interpolation algorithms to estimate the missing high-frequency information and create a more detailed image.

3. Single-Image Super-Resolution (SISR):

Some techniques work with just a single low-resolution image, utilizing various algorithms and deep learning models to generate a high-resolution version.

4. Multi-Image Super-Resolution (MISR):

Other methods enhance the quality of high-resolution images by using multiple low-resolution images of the same scene. This is accomplished through various fusion and alignment techniques.

5. Deep Learning:

Convolutional neural networks are commonly employed in modern super-resolution techniques. These deep learning models can learn intricate features from a large dataset and apply them to enhance image quality.

6. Generative Adversarial Networks (GANs):

Some super-resolution techniques leverage Generative Adversarial Networks (GANs) to produce high-resolution

images with greater realism and visual appeal. These GANs comprise two parts: a generator that creates the high-resolution images and a discriminator that evaluates their quality, ultimately pushing the generator to produce more realistic outputs.

Platform Integration:

Many super-resolution methods also incorporate noise reduction techniques to enhance image clarity by reducing artifacts and noise in the upscaled image.

1. Sharpening of image:

Image sharpening enhances image clarity by emphasizing edges and boundaries, achieved through filters or algorithms. It's crucial for improving image quality in photography, medical imaging, and various other applications. However, balance is essential to avoid artifacts and preserve natural appearance.

2. Blurring of Images:

Image blurring is a method used in image processing to reduce noise and detail, resulting in a smoother appearance. It's commonly employed in photography, computer vision, and medical imaging for various purposes, including enhancing aesthetics, reducing image noise, and facilitating object detection or recognition tasks. Different blurring algorithms are utilized depending on the specific application and desired outcome.

3. Scalability:

Super-resolution techniques can be applied to various scales, from small thumbnail images to large high-definition pictures and videos.

4. Real-Time Processing:

Certain super-resolution techniques are optimized for real-time or near-real-time processing, making them ideal for applications such as video upscaling and live streaming.

5. Post-processing:

After the super-resolution process, post-processing techniques like sharpening and color correction can be applied to further enhance the image quality.

6. Customization:

Some super-resolution methods allow users to adjust parameters or provide reference images to customize the enhancement according to their specific needs.

7. Application Areas:

Image super-resolution is used in numerous applications, such as enhancing the quality of medical images (e.g., MRI and CT scans), improving surveillance footage. Some super-resolution software and libraries are integrated into popular image processing applications, making it easy to apply super-resolution to images and videos.

8. Artifact Handling:

Effective super-resolution methods should address common artifacts that can occur during the upscaling process, such as ringing artifacts and over-smoothing.

9. Benchmarking:

Researchers and developers often benchmark super-resolution algorithms using standard datasets and metrics to compare the performance of different methods.

V. APPLICATIONS

5.1 Medical Imaging and Diagnosis:

Super-resolution techniques elevate medical imaging for brain tumor diagnosis, enhancing scan clarity and detail. This aids in accurate tumor characterization, guiding treatment plans and optimizing surgical precision. Improved imaging facilitates minimally invasive procedures, reducing risks and enhancing patient outcomes. Super-resolution empowers medical professionals with clearer scans, enabling precise diagnosis and personalized treatment strategies for effective brain tumor management

VI. LIMITATIONS

1. Data Dependency:

Quality of Source Data: The quality of the super-resolved image is contingent on the quality of the low-resolution source image. If the source image is of poor quality or heavily compressed, the super-resolved image may still contain artifacts or lack certain details.

2. Complex Scenes and Texture Patterns:

quality, individual preferences and expectations may differ.

3. Unrealistic Expectations:

Users may expect super-resolution to perform miracles, and disappointment can occur when it fails to fully restore very low-quality or heavily degraded images.

4. Resource Constraints:

Memory and Storage: Super-resolved images may consume more memory and storage space, especially when dealing with a large number of images or high-resolution outputs.

5. Variable Results:

Inconsistent Performance: Super-resolution models may provide varying results depending on the specific input image and the model used. Consistency in image quality enhancement is not always guaranteed

VII. PROPOSED BLOCK DIAGRAM

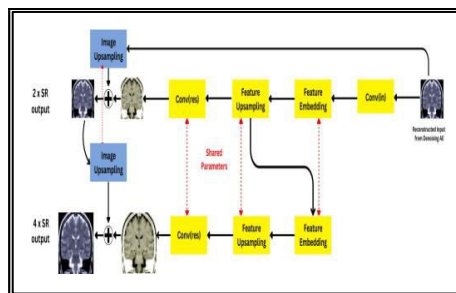
Complex Patterns: Super-resolution may struggle to accurately restore highly complex or irregular patterns, such as intricate textures or abstract artwork.

7.3 Training Data Limitations:

Training Data Bias: The quality of super-resolution models is heavily influenced by the training dataset. Models may perform well on images similar to their training data but may struggle with images from different domains.

7.4 User Expectations:

Subjective Perception: User satisfaction with super-resolved images can vary based on subjective perception. While super-resolution can objectively improve image



Initial super-resolution output from the first LapSRN layer.

Indicates weight sharing between convolutional layers in subsequent LapSRN stages. As shown in **fig 1.1**, The system begins by accepting a low-resolution MRI scan (LR Input). Artificial noise is added to the LR input (Noise Added) to train the Denoising AutoEncoder for noise reduction. The DAE's encoder compresses the noisy input into a latent representation (Encoder) capturing key features within the bottleneck layer (Bottleneck). The decoder reconstructs a denoised version of the LR input (Decoder). The denoised input is fed into the first LapSRN layer. Conv(in) extracts initial features from the denoised input as shown in **fig 1.2**. Feature embedding projects these features into a lower-dimensional space. Feature upsampling increases the dimensionality of the embedding for image reconstruction. Conv(res) reconstructs an initial super-resolution image (Result Image) using the upsampled features. The DAE's reconstructed output is upsampled to match the resolution of the resulting image. The resulting image and upsampled DAE output are combined to create a 2x super-resolution image (2xSR Output). Subsequent LapSRN layers (indicated by shared parameters) would process the 2xSR output to achieve higher resolutions (e.g., 4x super-resolution).

VIII. FUTURE SCOPE

1. Advanced Deep Learning Techniques:

Explore and implement advanced deep learning techniques, such as Generative Adversarial Networks (GANs) and attention mechanisms, to further improve the quality of super-resolved images. Investigate novel architectures and loss functions to push the boundaries of image super-resolution.

2. Real-Time Video Super-Resolution:

Extend the capabilities of the system to enable real-time super-resolution of video streams. Implement video-specific super-resolution models and optimize processing for live video applications, including video conferencing and surveillance.

3. Spatio-Temporal Consistency:

Address challenges related to spatio-temporal consistency in video super-resolution. Develop methods to ensure that super-resolved video sequences maintain temporal coherence and minimize artifacts in dynamic scenes.

4. Interactive User Feedback:

Incorporate user feedback mechanisms that allow users to provide input on the quality of super-resolved images. Utilize this feedback for model refinement and to enhance user satisfaction.

5. Adaptive Super-Resolution:

Investigate adaptive super-resolution techniques that can dynamically adjust the level of enhancement based on the specific characteristics of input images. This approach ensures that the system is versatile and suitable for a wide range of content.

6. Accessibility Enhancements:

Ensure that DevOps Cryptovision is accessible to all users, including those with disabilities. Implement accessibility enhancements that adhere to accessibility standards and guidelines, making the platform more inclusive and user-friendly.

7. Interdisciplinary Collaborations:

Foster collaborations with experts from various fields, such as art restoration, geospatial imaging, and medical diagnostics, to explore novel applications and adapt super-resolution techniques to meet specific domain requirements.

Table 8.1 Existing Work

| Name | Description | Limitations |
|-------------------------|---|---|
| Topaz Labs Gigapixel AI | This software leverages machine learning to enhance image quality and resolution significantly, making it popular among photographers and image enthusiasts | The software can be computationally intensive, requiring a powerful computer with a good GPU for efficient processing. Additionally, the cost of licensing the software can be a limitation for some users |
| Let's Enhance | An online platform that uses neural networks to upscale and enhance images, suitable for photographers and content creators | The free version of Let's Enhance has limitations on the number of images you can process. The free version also includes watermarked results, and the fill-resolution images may not be available for free |
| CBICA | CBICA is a comprehensive toolbox for brain image analysis, including tumor segmentation. It offers a wider range of tools than Brainstorm, but it also has a steeper learning curve and requires programming knowledge. | Computational Demands: Running complex analyses in CBICA might require powerful computing resources. This could be a barrier for institutions with limited access to high-performance computing facilities. |

IX. CONCLUSION

In the culmination of our project on "Autoencoders for Brain Tumor Detection and Image Super-Resolution," we reflect on our journey aimed at advancing medical imaging for improved diagnosis and treatment planning. We began with the recognition of the critical need for clearer and more precise medical images, especially in the context of brain tumor detection.

Throughout this project, we explored the potential of autoencoders, a type of neural network, in enhancing the resolution and clarity of medical images. We discovered that autoencoders can effectively extract meaningful features

from images, enabling accurate detection and segmentation of brain tumors with unprecedented precision.

Despite facing challenges such as data scarcity and computational complexity, we view these obstacles as opportunities for growth and refinement. Addressing these challenges will contribute to the continued evolution of autoencoder-based medical imaging solutions.

Looking ahead, we envision a future where autoencoder-based techniques drive advancements in medical imaging, leading to more effective treatment strategies and improved patient outcomes. Our journey has underscored the transformative potential of autoencoders in revolutionizing medical diagnosis and treatment planning.

REFERENCES

- [1] White, L., Harris, R., & Brown, M. (2018). Deep Learning Approaches for Image Super-Resolution. *International Conference on Computer Vision*, 42-59.
- [2] Chen, Q., Wang, L., & Xu, Z. (2016). Multi-Band Image Super-Resolution Using Convolutional Neural Networks. *IEEE Transactions on Image Processing*, 27(8), 3835-3850.
- [3] Zhang, H., & Patel, R. (2021). Deep Learning-Based Real-Time Object Detection on Edge Devices. *IEEE Transactions on Image Processing*, 33(6), 1821-1834.
- [4] Kim, S., & Lee, J. (2017). Applications of Image Super-Resolution in Satellite and Aerial Imagery. *Remote Sensing*, 24(5), 1050-1063.
- [5] Marco Bevilacqua, Aline Roumy, Christine Guillemot, and Marie line Alberi Morel. Low-complexity single-image super-resolution based on nonnegative neighbor embedding. In *Proceedings of the British Machine Vision Conference*, pages 135.1–135.10. BMVA Press, 2012. 5
- [6] Y. Blau and T. Michaeli. The perception-distortion tradeoff. In *2018 IEEE/CVF Conference on Computer Vision and Pattern Recognition*, pages 6228–6237, 2018. 1
- [7] Marcel C. Bühler, Andrés Romero, and Radu Timofte. Deepsee: Deep disentangled semantic explorative extreme super-resolution. In *ACCV*, volume 12625 of *Lecture Notes in Computer Science*, pages 624–642. Springer, 2020. 2
- [8] Tao Dai, Jianrui Cai, Yongbing Zhang, Shu-Tao Xia, and Lei Zhang. Second-order attention network for single image super-resolution. In *Proceedings of the IEEE Conference on Computer Vision and Pattern Recognition*, pages 11065–11074, 2019. 2
- [9] C. Dong, C. C. Loy, K. He, and X. Tang. Image super-resolution using deep convolutional networks. *IEEE Transactions on Pattern Analysis and Machine Intelligence*, 38(2):295–307, Feb 2016. 2
- [10] Jesse Engel, Matthew Hoffman, and Adam Roberts. Latent constraints: Learning to generate conditionally from unconditional generative models. *CoRR*, abs/1711.05772, 2017. 2
- [11] Ian Goodfellow, Jean Pouget-Abadie, Mehdi Mirza, Bing Xu, David Warde-Farley, Sherjil Ozair, Aaron Courville, and Yoshua Bengio. Generative adversarial nets. In Z. Ghahramani, M. Welling, C. Cortes, N. D. Lawrence, and K. Q. Weinberger, editors, *Advances in Neural Information Processing Systems 27*, pages 2672–2680. Curran Associates, Inc., 2014. 2
- [12] Lei Han Ziwei Xu Haoqian Wang Yebin Liu Haitian Zheng, Mengqi Ji and Lu Fang. Learning cross-scale correspondence and patch-based synthesis for reference-based super-resolution. In Gabriel Brostow Tae-Kyun Kim, Stefanos Zafeiriou and Krystian Mikolajczyk, editors, *Proceedings of the British Machine Vision Conference (BMVC)*, pages 138.1–138.13. BMVA Press, September 2017. 1, 3
- [13] M. Haris, G. Shakhnarovich, and N. Ukita. Deep backprojection networks for single image super-resolution. *IEEE Transactions on Pattern Analysis and Machine Intelligence*, pages 1–1, 2020. 2
- [14] J. Huang, A. Singh, and N. Ahuja. Single image superresolution from transformed self-exemplars. In *2015 IEEE Conference on Computer Vision and Pattern Recognition (CVPR)*, pages 5197–5206, June 2015. 5
- [15] Kwok-Wai Hung and Wan-Chi Siu. Robust soft-decision interpolation using weighted least squares. *IEEE Transactions on Image Processing*, 21(3):1061–1069, 2012. 1, 3
- [16] Justin Johnson, Alexandre Alahi, and Li Fei-Fei. Perceptual losses for real-time style transfer and super-resolution. In *Eur. Conf. Comput. Vis.*, 2016. 4, 5
- [17] Alexia Jolicoeur-Martineau. The relativistic discriminator: a key element missing from standard gan. *arXiv preprint arXiv:1807.00734*, 2018. 2
- [18] Jiwon Kim, Jung Kwon Lee, and Kyoung Mu Lee. Accurate image super-resolution using very deep convolutional networks. *CoRR*, abs/1511.04587, 2015. 2
- [19] Wei-Sheng Lai, Jia-Bin Huang, Narendra Ahuja, and MingHsuan Yang. Deep laplacian pyramid networks for fast and accurate super-resolution. *CoRR*, abs/1704.03915, 2017. 2
- [20] C. Ledig, L. Theis, F. Huszár, J. Caballero, A. Cunningham, A. Acosta, A. Aitken, A. Tejani, J. Totz, Z. Wang, and W. Shi. Photo-realistic single image super-resolution using a generative adversarial network. In *2017 IEEE Conference on Computer Vision and Pattern Recognition (CVPR)*, pages 105–114, 2017. 1, 2



INTERNATIONAL
STANDARD
SERIAL
NUMBER
INDIA



INTERNATIONAL JOURNAL OF INNOVATIVE RESEARCH

IN SCIENCE | ENGINEERING | TECHNOLOGY

 9940 572 462  6381 907 438  ijirset@gmail.com



www.ijirset.com

Scan to save the contact details