



e-ISSN: 2319-8753 | p-ISSN: 2347-6710

IJRSET

International Journal of Innovative Research in
SCIENCE | ENGINEERING | TECHNOLOGY

INTERNATIONAL JOURNAL OF INNOVATIVE RESEARCH

IN SCIENCE | ENGINEERING | TECHNOLOGY

Volume 13, Issue 5, May 2024

ISSN INTERNATIONAL
STANDARD
SERIAL
NUMBER
INDIA

Impact Factor: 8.423

9940 572 462

6381 907 438

ijirset@gmail.com

www.ijirset.com

Irregular Registration is a Useful Pretreatment Approach to Identifying Diseases based on Deep Learning

Asha P, Joby Elsa Abraham, Dr Smitha C Thomas

U.G. Student, Department of CSE, Mount Zion College of Engineering, Kadammanitta, Pathanamthitta, India

Assistant Professor, Department of CSE, Mount Zion College of Engineering, Kadammanitta, Pathanamthitta, India

Associate Professor, Department of CSE, Mount Zion College of Engineering Kadammanitta, Pathanamthitta, India

ABSTRACT: Using brain structural magnetic resonance imaging (MRI) data, several machine learning (ML), and more recently, deep learning (DL) techniques have been developed to facilitate the automated categorization of dementia (AD). On the other hand, there aren't much statistics on this particular illness. Over fitting is likely to occur when a DL model with many feature parameters is trained on a limited dataset of MRI scans. The model's efficiency and applicability are decreased by overfitting. Through the minimization of spatial variability in the input data, I demonstrate in this paper that a typical regressive conversion between native area into template area, as a pretreatment step, is beneficial for minimizing excess fitting. I compare two distinct preprocessing techniques for the DL-based AD classification task—affine registration and asymmetric diffeomorphic anatomic authorization using exponential Lie algebra (DARTEL) in order to assess this efficacy. The outcomes demonstrate that the asymmetric registration-based strategy outperforms the affine registration-based strategy in terms of fidelity. Furthermore, DARTEL is less sensitive to noise than affine registration, according to the classification findings achieved with images that are noisy. In conclusion, our experimental findings imply that, when training DL-based AD models for classification on small datasets, asymmetric modification is a better preprocessing step.

KEYWORDS: Convolutional Neural Network, Recurrent Neural Network, Image Processing, Biomarkers and Feature Extraction, Data Processing, Data Management, AD, MRI

I. INTRODUCTION

A. CHARACTER TRANSACTION AND BIOLOGICAL INDICATORS IN DEMENTIA RECOGNITION

Tests based on metabolites measure a patient's levels of biomarkers to diagnose disease. According to recent studies, biomarkers are essentially the only tools available for use as a clinical diagnosis indicator for AD, particularly when the disease is still in the MRI stage. MRI, the Department of Trade and and PET are a few non-invasive neuroimaging techniques that have been researched for the purpose of detecting AD. The physical structure of the human brain may be readily seen on an MRI, which is useful for measuring and researching changes in the process of AD brain atrophy. By examining water diffusion at the brain's microstructure level, DTI is able to identify the aberrant diffusion pattern associated with AD. PET uses data and picture display to quantitatively analyse both the body's normal metabolism and abnormal alterations. The initial introduction to biomarkers is given in this section. Next, the brain scanning preprocessing technology is described. Lastly, a detailed introduction to several removing features techniques is given.

B. DEMENTIA BIOLOGICAL MARKERS

Currently, the most common sources of ad biomarkers that are being used or are still in the research and development stages are blood, urine, and cerebral spinal fluid (CSF). The central spinal fluid (CSF), which can buffer, protect, transport metabolites, and regulate intracranial pressure, is filled in the ventricles, subarachnoid space, and central spinal canal. Cerebrospinal fluid will vary in composition and properties if there is a disease affecting the central nervous system and the breakdown of nerve cells. As a result, CSF contains a wealth of dementia metabolites. The majority of research on AD metabolites now concentrates on the CSF specimen origin. An investigation of the digital area underneath the slope (AUC) and ideal thresholds for each biomarker was carried out by Hamburger et al. The primary fluctuation in CSF biomarkers has been proven and has room for improvement in a clinical setting. Unfortunately, the intrusive sampling method used to get CSF, the individuals' low legal compliance, and the possibility of

adverse effects limit the treatment's acceptance and use in the early stages of AD

C. INFORMATION THERAPY

Format conversion, skull removal, head movement and time slice correction, generic signing up, consistency, blending, along with core section identification are the preliminary stages for MRI images. The PET scanning procedures image processing techniques include standardization, smoothing, species authentication, format conversion, and head rotation correction.

D. INFORMATION MANAGEMENT

All that collecting features is really is a method of reducing the overall dimension of the data. Since the original image is too big and noisy, a direct classification is challenging. The four types of input processing methods include slice-based, oxidised, ROI-based, and so forth, depending on the kind of recovered characteristics. ROI-based, slice-based, and voxel-based

II. RELATED WORK

A. IMAGE RECOGNITION USING DEEP RESIDUAL LEARNING.

Training stronger neural pathways is more challenging. Rather than learn unreferenced works, I explicitly reformulate the layers as learning residual functions in relation to the component values. present thorough empirical data demonstrating that these residual networks can be optimized more easily and that they can benefit from significantly greater depth in terms of accuracy. We test retained networks on the dataset provided by ImageNet that can reach up to 152 layers, which is 8 times deeper than VGG nets but yet has a lower level of On the Image Network test set, an ensemble of these residual nets achieves a success rate of 3.57%. 0.

B. THE USE OF DEEP LEARNING ARCHITECTURE OUTFITS FOR DEMENTIA SCREENING.

A key instrument for the prompt identification of dementia (AD) is electronic diagnosis (CAD), which makes it possible to provide potentially easier and more successful therapies. This work investigates the development of deep learning architecture-based classification methods linked to brain areas identified by Auto Histological It. The AAL axis' areas have been utilized to divide neural gray matter (GM) images from each brain region into three-dimensional (3D) upgrades, which are then used to train various deep cognitive networks.

C. THE USE OF DEEP LEARNING REPORT PHRASE FOR CONSIDER REVIEW IN MEDICINE

A collection may analyze and derive obscure connections from the traits that the convex block extracts from the captured image. Down a sample, or reducing the size of the convolved features, is accomplished by applying layers to a pool. In fully linked layers, sorting duties are carried out based on the properties that the previous layers have retrieved. While entirely linked layers use a SoftMax, on the activity or conventional machine learning classifiers (SVM, KNN, etc.) to classify inputs, convolutional layers often use the rectified linear unit (Re Lu) function to activate neurons.

D. A MULTI-SITE INVESTIGATION ON ARTERIAL SPIN-LABELLED MRI IN PRODROMAL DEMENTIA.

This assessment was similar to the widely researched neuroimaging biomarker in these groups, T1-weighted imaging, which is used to evaluate hippocampus volume. Ultimately, considering how simple it is to collect both of these picture types during a single perusing class, it appears that ASL and Structured magnetic resonance imaging provide the additional data regarding the severity of the disease.

E. RANDOM FOREST COMPUTING COMBINATION WITH STRONG BETWEEN-COHORT FORTITUDE FOR DEMENTIA SCREENING AND ANTICIPATE.

This work examined the accuracy and between-cohort consistency of Random Forest coders trained using various MRI structural imaging measurements, using and without a neuroanatomical constraints, in the detection and prediction of AD. 185 AD and 225 healthy controls (HC) were randomly divided into instruction and evaluation data sources from the ADNI the system. 165 participants with mild cognitive impairment (MCI) were split up based on the month that they developed dementia (four-year follow-up)

III. METHODOLOGY

A. Existing System

Early the condition detection can aid in appropriate care and avert harm to brain tissue. Study authors have used a number of statistical and machine learning models to diagnose dementia. Clinical researchers frequently use magnetic resonance imaging (MRI) analysis to diagnose dementia. Because dementia-related MRI data and typical healthy MRI data of older adults are comparable, diagnosing dementia illness is a challenging task. Modern deep learning methods has lately demonstrated themselves to be as effective as humans in a variety of fields, which incorporates health-care picture processing.

B. Proposed System

A deep CNN that analyses brain MRI data to diagnose AD. Although the majority of current methods only carry out binary classification, my model is better at diagnosing AD at the onset and is able to distinguish between different phases of the disease. The goal of this research is to create a novel deep convolutional autoencoder-based exploratory data analysis for AD. My goal is to establish connections between cognitive symptoms and the underlying neurodegenerative process by combining data from imaging features obtained only through a data-driven digestion of MRI with data taken from neuropsychological test results, diagnoses, and other clinical data. Regression and classification analysis are then used to analyse and show the distribution of the extracted features in various layouts, and an estimation of the influence of each coordinate of the auto-encode multiplied over your mind is made.

C. Delivery of Records

The ADNI dataset is used in these investigations for decision-making education as well as validation. 600 randomly chosen participants from the ADNI1, ADNI2, and ADNI-GO investigations were given the diagnostic designations "AD" and "NC" (AD: 300, NC: 300). I made use of the original diagnosis's a sign labeling and MRI pictures. The official website of the ADNI has information about the MRI acquisition protocol for the ADNI dataset. The models that were chosen were tested and compared using a different set of 100 persons (AD: 50, NC: 50) from the Australian Imaging, Biomarker & Lifestyle Flagship Study of Ageing (AIBL) project, which included data of over 1100 individuals spanning 4–5 years. The AIBL dataset uses the MRI acquisition procedure that was taken about ADNI

D. Preprocessing

The MNI template brain (affine dataset) was used to normalize the brain pictures in affine registration. First, bias-field correction utilizing the N4 algorithm was carried out in order to reduce the impact of magnetic field inhomogeneity on MRI pictures under various imaging situations. Following that, each individual underwent brain extraction analysis while wearing the mask an illustration of the brain area supplied by OASIS. Ultimately, a convergence computation was conducted using a rigid body affine transformation to match the individual brain to the MNI standard brain. The brain scans (DARTEL dataset) were standardized using 3DT1-DARTEL, and the standard brain size employed in this experiment was $64 \times 64 \times 64$. Initially, the images that were divided into gray and white matter were used to produce the standardized parameters used for DARTEL utilizing the information gained through learning group

E. Gaussian Noise

In this work, I examine the classification accuracies associated with various noise levels. This approach was designed to confirm how noise affects the precision of the predictive model on the assumption that noisy images are common in clinical settings. In order to compare the success rate in classification of each approach with that of the learned model without noise, each model was trained and validated on the dataset containing additive noise. In this experiment, the choppy information that arises in clinical settings was artificially reproduced using Gaussian noise. I made use of the algorithm found in TorchIO 0.17.47. The following formula has been used. In order to adjust the degree of Gaussian noise introduced into the data, the distribution's the format of standard deviation was gradually changed from 0 to 200

F. DL model

One of the popular digital models in computer vision, Residual Arrays (ResNet), was employed in this investigation. Compared to conventional CNNs, ResNet is a kind of CNN developed to avoid feature loss while in the convolution process. When used for image classification tasks, it frequently yields better identification dexterity than simple CNNs. Because of the skip connections in ResNet's architecture, it is possible to prevent training data feature loss even in deep CNN models. In this investigation, I employed ResNet50. I used transfer learning, a popular method for training DL models, to make up for this little quantity of data. Our networks' weights underwent pre-training using the ImageNet dataset

G. Examination

I created six datasets for this investigation with a 1:1 ratio of AD to NC. Every dataset that was chosen at random one from the ADNI dataset. 20% of each dataset was utilized as a validation set for the model selection process, while the remaining 80% was used for training. The AIBL dataset was used to test the chosen models. The laboratory study was carried out on a PC through a NVIDIA K80 video card unit, and the model was implemented in Pytorch[29], an open source machine learning framework. and determined the specificity, sensitivity, and accuracy of the classification in order to assess the precision of the classification. The original photos were subjected to Gaussian noise, then the same classification experiment was conducted. I assessed the accuracy of a listing for every noise the difficulty

IV. RESULTS

Fig.1 demonstrates the models' accuracy using the AIBL dataset. In this experiment, we discovered that using the DARTEL dataset during training led to a better classification accuracy. When using the affine the data sets the rating dexterity ranged from 0.66 to 0.77; however, when using the DARTEL a set of data the range was 0.82 to 0.87. Accurate classification for every quantity of datasets

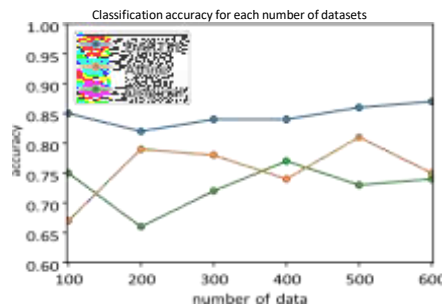


Fig. 1. Speed of classification transitions when preprocessing steps and image count are altered. The DARTEL dataset displayed high area under the curve (AUC) values in all trials, as seen in.

Fig.2 which displays the receiver carrying out characteristic curve created using the Soft maximum values for the result for the given test data.

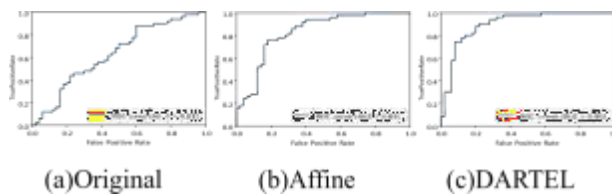


Fig. 2 Assessment of the model developed for each process using the 300 training datasets .

Demonstrated a significant difference across educating and validating losses. On the other hand, the validation data's loss value converged when DARTEL was applied to full brain pictures

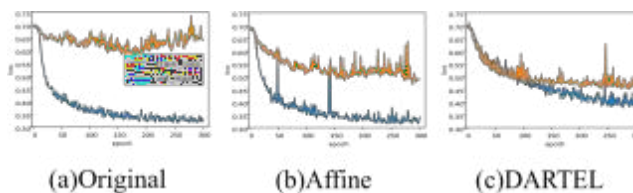


Fig. 3. The logs of loss function that the models created by the 300 brain images for each preprocess.

Fig. The loss function logs for each go over that the models built using the 300 brain pictures. When 4 (a), 4 (b), and 4 (c) are restricted to the training data sets of 100, 300, and 600 and DARTEL is utilized for preprocessing.

improvement in the value of the loss function.

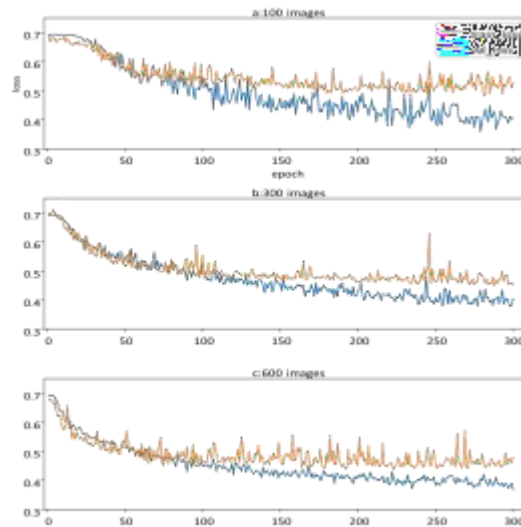


Fig. 4. The logs of loss function

Displayed the given input of the generated system's Softmax function to verify if each preprocessing technique could extract the features needed for classification. Fig. 5 displays the outcomes of the principle component analysis (PCA) and extraction in order of features from the learning and test data that come right before the last level. Following PCA, a plot is displayed for every patient, with the first and second main components placed on an axis. After a nonlinear shifts, the distributions of the training and validation data became similar, but upon an linear change, the percentages of the data were different.

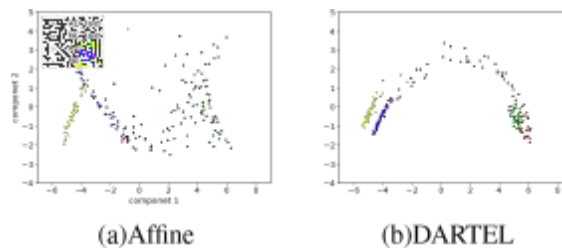


Fig. 5. 5 PCA using output from hidden layers for test and training sets of data

Fig.6 Displays the outcomes of the appropriate preprocessing applied to the original noisy photos for education as well as validation. The findings are displayed for the instructional information of 300 people, and the data used had been the same as in the experiment mentioned above. Fig. 6 confirms that when using affine registration conditioning methods, the classification accuracy against the noise intensity dropped from 70% to 56%. But it was shown that DARTEL registration allowed for the maintenance of the 69%–75% accurate classification rates even in the presence of higher noise levels.

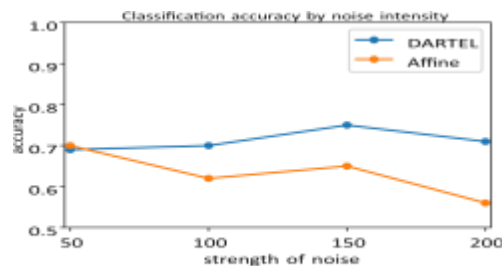


Fig. 6. Classification accuracy

V. DISCUSSION

Finding an efficient preprocessing technique for AD classification of brain MRI images with little data—that is, MRIs of AD patients—was the aim of this study. GM atrophy is recognized to be a characteristic of AD patients[30]. The outcome demonstrates that applying the DARTEL conditioning method increased the classification accuracy. This suggests that a key component for AD/NC classification is probably the GM volume map. The GM volume of AD is lower than it would be in a normal state due to GM atrophy. Consequently, when classifying an object as AD or NC, volume is a crucial piece of data. Consequently, overfitting was decreased when the GM volume map was used.

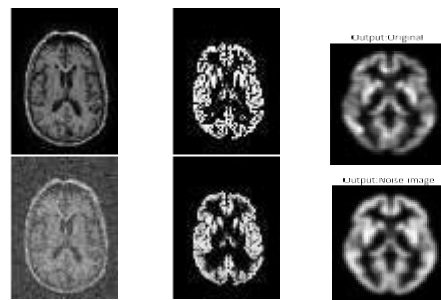
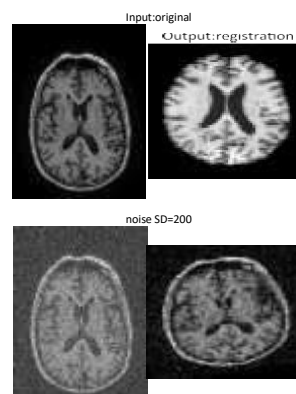


Fig 7: The DARTEL process displays for every input image



The intuitive transform's output for every noisy picture Fig: 8

When compared to a picture of the entire brain, fewer capacities can be learned because the DARTEL method only conveys the volume and location information of the GM. Assembled data with DARTEL should enable more efficient learning since 3D scans of the complete brain include a lot of information, which can lead to overfitting of the model. The ability of the nonlinear registration image to identify particular AD/NC characteristics in both the data used for training and tests is confirmed by Fig. 5.

Specifically, in the case of whole brain, nearly all of the studies showed overfitting, and A modification in data volume did not result in a boost in classification accuracy. This experiment's data set was insufficient to allow for gaining knowledge of generalized the characteristics. The relationship to the variety of features, the quantity needed for learning, and the degree of precision more classification can be elucidated if the amount of data accessible increases in the future.

VI. CONCLUSION AND FUTURE SCOPE

To determine the most efficient preprocessing methods for AD selection. According to the findings, preprocessing with the GM volume connect and the DARTEL approach decreased overestimation and increased classification accuracy by up to 18%. Consequently, it was discovered that nonlinear registration of brain MRI data using DARTEL was a more successful preprocessing technique in our experiment. Potentially important information is lost when a 3D MR picture is reduced to the data of a single 2D slice. By contrast, the innovative CNN-EL method that I have presented here possesses the subsequent noteworthy characteristics:

1. The suggested model may take longer to construct because many more base classifiers must be trained, in comparison to

the time required to develop a model using data from only one slice orientation. The ensemble model was constructed by training the base classifiers using multitasking method, which proved to be an efficient solution to the problem. This increased the suggested model's scalability and significantly increased its training efficiency.

2. The three sets of top "N" foundational classifiers developed using data from horizontal, coronal, and transverse slices, respectively, were identified based on the classification performances of all trained base classifiers on the verification dataset. The most significant inclined, symmetrical, or horizontal slice for a decision-making job (such as AD vs. HC) might be found in accordance with all three groups of top "N" base classifiers in a data-driven manner because a base classifier received education using the data from only a particular slice orientation. Additionally, the Brain stem Atlas might be used to discover the brain regions that correspond to the junction locations identified by the top "N" sagittal, coronal, and transverse slices. In the event the number of point intersections may serve as a gauge for a brain region's ability to be classified, the brain areas with the greatest number for points may also be especially discriminable for a binary classification job.

The suggested approach may prove beneficial afterwards for finding more potential cerebral imaging molecules for dementia as well as for additional cognitive conditions like Parkinson's condition, dementia, and chronic depression. It is particularly useful for finding potential neuroimaging biological markers in a data-driven manner for greater little-non brain illnesses. In addition to the suggested approach, the system is expanded by using numerous imaging data, including T1, T1, and meta data, to enhance the clinical diagnostic of AD

REFERENCES

1. Yixin Ma, Kundong Wang, Manhua Liu, Fan Li, Hao Yan, Li Shen, and Mingqing Xu NeuroImage, Volume 208, 2020, 116459, ISSN 1053-8119, A multi-model deep convolutional neural network for automatic hippocampus segmentation and classification in Alzheimer's disease
2. Landmark-based deep multiinstance learning for brain illness diagnosis, Liu M, Zhang J, Adeli E, Shen D. In January 2018, Med Image Anal. 43:157-168.
3. A quick diffeomorphic picture registration technique, Ashburner J. 2007 Oct 15;38(1):95-113; Neuroimage.
4. Alzheimer's Disease; Basaia S, Agosta F, Wagner L, Canu E, Magnani G, Santangelo R, Filippi M Neuroimaging Program. automated diagnosis of mild cognitive impairment and Alzheimer's disease with a single MRI and deep neural networks. 2019;21:101645; Neuroimage Clin.
5. Gee JC, Yushkevich PA, Cook PA, Zheng Y, Egan A, Tustison NJ, and Avants BB. N4ITK: enhanced correction of N3 bias. IEEE Trans Med Imaging, 29(6), 1310–20, June 2010.
6. Cook PA, Klein A, Song G, Das SR, Kandel BM, van Strien N, Stone JR, Gee JC, Avants BB, Tustison NJ, Kandel BM, and Duda JT. Comprehensive assessment of ANTs and FreeSurfer measures of cortical thickness. 2014 Oct 1;99:166-79; Neuroimage.
7. Avants BB, Cook PA, Klein A, Gee JC, Tustison NJ, Song G. a repeatable assessment of the brain image registration performance of ANTs similarity metrics. 2011 Feb 1;54(3):2033–2044; Neuroimage
8. [8] Alzheimer's Disease Neuroimaging Initiative; Wang Z, Das SR, Xie SX, Arnold SE, Detre JA, Wolk DA. A multi-site investigation on arterial spin labeled MRI in prodromal Alzheimer's disease. Apt 30 (2013);
9. Neuroimage Clin. 2:630-6
10. Carreras JL, Desco M, Cruz I, Navarro E, CruzbME, de Villoria JG, Lacalle-Aurioles M, Olazaran J, and Garc' a- Vazquez V. Comparing several techniques for spatial normalization of FDG-PET brain images in voxel-wise
11. analysis of patients with motor cognitive impairment (MCI) and controls. Aug. 2013, Aug. 27(7):600-9; Ann Nucl Med
12. Using TorchIO, a Python package for effective loading, preprocessing, augmentation, and patch-based sampling of medical images in deep learning, Fernando Perez-Garc' a, Rachel Sparks, and Sebastien Ourselin Biomedical Computer Methods and Programs, 2021, 106236, ISSN 0169-2607.
13. Chen C, Ashburner J, Barnes G, and others. SPM8 Handbook. parametric mapping in statistics
14. Deep Residual Learning for Image Recognition, K. He, X. Zhang, S. Ren, and J. Sun, 2016 IEEE Conference on Computer Vision and Pattern Recognition (CVPR), Las Vegas, NV, 2016, pp. 770-778.
15. Places: A 10 Million Image Database for Scene Recognition, B. Zhou, A. Lapedriza, A. Khosla, A. Oliva, and
16. Torralba, IEEE Transactions on Pattern Analysis and Machine Intelligence, vol. 40, no. 6, pp. 1452-1464, 1 June 2018
17. Python: An Imperative Style, HighPerformance Deep Learning Library, CoRR, abs/1912.01703, 2019, arXiv, 1912.01703; Adam Paszke, Sam Gross, Francisco Massa, Adam Lerer, James Bradbury, Gregory Chanan, Trevor Killeen, Zeming Lin, Natalia Gimelshein, Luca Antiga, and Alban Desmaison; Andreas Kopf, Edward Yang, Zach DeVito, Martin Raison, Alykhan Tejani, Alykhan Tejani, Benoit Steiner, Lu Fang, Junjie Bai, and Soumith Chintala; PyTorch: An Imperative Style, HighPerformance Deep Learning Library, CoRR, abs/1912.01703, 2019, arXiv, 1912.01703
18. Grey and white matter changes at different phases of Alzheimer's disease (Serra L, Cercignani M, Lenzi D, Perri R, Fadda L, Caltagirone C, Macaluso E, Bozzali M). Alzheimer's Disease Journal. 2010;19(1):147–59



INTERNATIONAL
STANDARD
SERIAL
NUMBER
INDIA



INTERNATIONAL JOURNAL OF INNOVATIVE RESEARCH

IN SCIENCE | ENGINEERING | TECHNOLOGY

 9940 572 462  6381 907 438  ijirset@gmail.com



www.ijirset.com

Scan to save the contact details