



e-ISSN: 2319-8753 | p-ISSN: 2347-6710

IJRSET

International Journal of Innovative Research in
SCIENCE | ENGINEERING | TECHNOLOGY

INTERNATIONAL JOURNAL OF INNOVATIVE RESEARCH

IN SCIENCE | ENGINEERING | TECHNOLOGY

Volume 13, Issue 5, May 2024

ISSN INTERNATIONAL
STANDARD
SERIAL
NUMBER
INDIA

Impact Factor: 8.423

9940 572 462

6381 907 438

ijirset@gmail.com

www.ijirset.com

A Comprehensive Guide for Detecting and Resolving Faults that Occur in Solar Panel

Mr. S. Gowtham, S. Gowtham, B. Thamaraiselvan, R. Raju

Assistant Professor, Department of Electrical and Electronics Engineering, K.S.R College of Engineering, Namakkal,
Tamil Nadu, India

PG Student, Department of Electrical and Electronics Engineering, K.S.R College of Engineering, Namakkal, Tamil
Nadu, India

Head of the Department, Department of Electrical and Electronics Engineering, K S Rangasamy Institute of
Technology, Tiruchengode, Namakkal, Tamil Nadu, India

Lecturer, Department of Electrical and Electronics Engineering, K S Rangasamy institute of Technology,
Tiruchengode, Namakkal, Tamil Nadu, India

ABSTRACT: Solar power fault detection is important for the efficient operation and maintenance of solar photovoltaic (PV) systems. This paper presents a new method for solar detection using optimization. The aim of this work is to develop a robust and practical method to detect and diagnose faults in solar photovoltaic systems to ensure reliability and continuous firepower. The plan uses various optimization techniques such as genetic algorithms, particle swarm optimization or machine learning techniques to analyze the data collected from the solar panels and inverter. Using this optimization process, the system can intelligently identify and classify faults such as panel shading, inverter failure, module degradation, and electrical connection problems. This study contains comprehensive information on real-world operational data from solar installations, allowing for the training and validation of crime detection algorithms. The performance of the system was evaluated in terms of accuracy, sensitivity and specificity, and its effectiveness in detecting various faults in solar photovoltaic systems was demonstrated. The results of this study show that the use of optimization algorithms significantly increases the accuracy and performance of solar photovoltaic systems. Corrective testing reduces treatment time and costs while increasing production and reliability. As solar energy becomes an important part of our energy supply, technology that will increase the sustainability of these systems and operate efficiently needs to be developed.

Keywords : Solar panel, PV Photovoltaic, Fault detecting sensor, Inverter failure, Data collector, optimization algorithms, Electric power generation.

I. INTRODUCTION

Solar energy is a promising and rapidly growing type of renewable energy that plays an important role in solving global energy problems and reducing environmental problems. As solar energy infrastructure expands, ensuring the efficiency of photovoltaic (PV) systems becomes more important. One of the problems encountered in the operation of a solar power plant is the occurrence of poor or poor operation, which can affect the entire functioning of the system. Faults in solar photovoltaic systems can be caused by a variety of reasons, such as equipment failure, environmental conditions and damage over time. Rapid detection and diagnosis of these problems is crucial for efficient energy management, reducing downtime and extending the life of your solar installation. To solve this problem, scientists and engineers turned to the best way to increase the efficiency of solar photovoltaic energy production. Optimization algorithms use mathematical and computational techniques to analyze large amounts of data and identify patterns that indicate dysfunction or dysfunction in the system. These algorithms are designed to increase the accuracy and efficiency of error detection so that corrections can be made in a timely manner.

The optimization process includes error correction, site correction, and algorithm correction to maximize the accuracy and specificity of the crime. By integrating optimization into solar monitoring and control systems, employees can gain real-time visibility into the health status of PV systems and benefit from emergency prevention or repair. This research topic is important to improve the reliability and reliability of photovoltaic systems. The efficiency of the solar system contributes to the overall sustainability of renewable energy sources. The following sections will take an in-depth look

at optimization methods, their applications in solar energy testing, and the advantages they have in terms of performance, efficiency, reduced maintenance costs, and overall energy efficiency optimization.

II. ANALYSIS OF FAULT DETECTION

A comprehensive guide to diagnosing and troubleshooting solar panels explores a way to identify and mitigate various problems that can affect photovoltaic system performance. Failure analysis includes various problems such as shading effects, dust accumulation and electrical faults in the solar panel. Shadows from nearby buildings or vegetation can cause partial or total loss of power. The guide addresses the shading issue by following advanced techniques and intelligent algorithms that dynamically adjust the system to optimize energy harvesting even in partial shade. Cleaning time is recommended considering dust accumulation on solar panels, and automatic cleaning systems are used to preserve the light. Additionally, the manual mentions the possibility of electrical malfunctions as well as problems with wiring, connectors, or sunlight on each other. It is recommended to use diagnostic tools such as infrared thermography and electronic equipment to detect and solve these problems. The guide describes preventive maintenance strategies and maintenance of the aircraft to ensure early detection of faults and rapid solutions, ultimately ensuring the reliability and performance of the solar panel.

III. SYSTEM DESCRIPTION

In complex solar panel systems, each component plays an important role in ensuring efficiency and reliability. The main energy converter is the solar panel itself, which is responsible for using sunlight and converting it into electricity. Electronics are integrated to monitor the performance and health of the solar panel. Voltage and current sensors provide instant information about electrical properties, allowing accurate analysis of electricity production. The figure 3.1 shows the block diagram of the existing system.

• BLOCK DIAGRAM

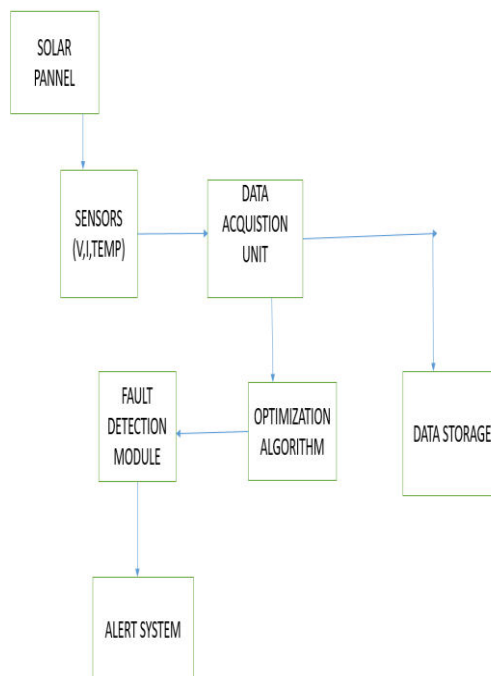


Figure 1 Block Diagram

Temperature sensors provide insight into operations, helping to increase efficiency and detect errors. The data collected by these sensors is centralized and processed by the Data Acquisition Unit (DAU). This unit acts as the brain of the system, effectively storing voltage, current and temperature data. The quality defect detection system attached to DAU uses advanced techniques to check whether sensor data is abnormal. It detects problems such as irregularities or abnormal temperatures and ensures immediate intervention of the alarm. The optimization algorithm

also adjusts the solar panel's operating area to obtain maximum energy and respond dynamically to environmental changes. The database stores historical performance and error data to facilitate post-event analysis and optimization. Alarm systems ensure that employees or supervisors are quickly warned so that violations can be responded to effectively. Together, these components create a powerful solar panel system that combines instant monitoring, fault detection, optimization and instant alerts for performance improvements, quality and reliability.

IV. EXPERIMENTAL SETUP

When using general guidelines for diagnosing and resolving solar panel faults, a practical test setup is important to simulate real-world conditions and measure the effectiveness of fault detection and troubleshooting strategies. The installation will include several solar panels exposed to different environments such as shade, dust and temperature changes. Sensors, including voltage, current and temperature sensors, need to be embedded in the solar panel to capture real-time data about its electrical properties and performance. The data collection process will then collect and process this data as a basis for research and analysis.

To simulate a fault, intentional defects such as shading elements or simulated dust can be introduced into the custom solar system. In quantity. A fault detection module equipped with advanced algorithms will detect and classify these faults by analyzing the data obtained. Test conditions related to electrical faults, such as short or open, can be used to test the ability to identify and resolve such problems. Solutions may include mechanical cleaning, upgrades to solar panel arrays to reduce shading effects, or even maintenance based on non-functional models. This comprehensive testing allows a rigorous and practical testing of the fault diagnosis and the solutions proposed in the manual and guarantees their effectiveness in a variety of different and complex situations often encountered in solar panels.

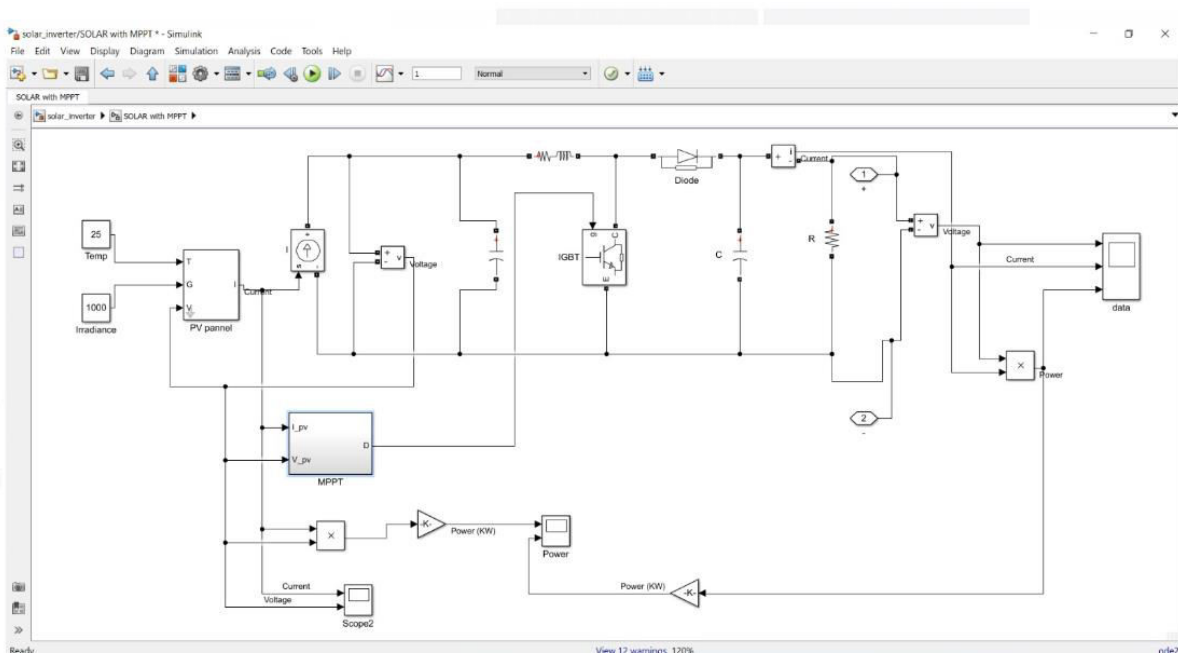


Figure 2 Simulation set up

V. COMPARISON OF FAULT DETECTION IN SOALR PANNEL

Below is a graphical representation of comparisons for diagnosing and resolving solar panel failure:

Parameter	Comprehensive Guide	Traditional Fault Detection Methods
Fault Detection Accuracy	Utilizes advanced algorithms	Relies on standard fault detection techniques
Environmental Adaptability	Strategies for various faults in diverse conditions	May lack specificity for certain environmental challenges
Real-time Monitoring	Emphasizes continuous monitoring	May have intermittent or periodic monitoring
Predictive Maintenance	Incorporates predictive strategies based on fault patterns	Reactive maintenance based on identified faults
Resolution Efficiency	Dynamic resolution strategies, such as automated cleaning or reconfiguration	Manual intervention may be required, potentially leading to delays
Simulation Realism	Simulates diverse real-world conditions	Limited simulation scenarios may not capture the full range of potential faults
Integration of Sensors	Utilizes a variety of sensors for comprehensive data collection	Relies on a basic set of sensors for fault detection
Automation Level	Incorporates high levels of automation in fault resolution	Manual intervention may be more prevalent
Data Storage and Analysis	Comprehensive data storage and analysis for post-fault assessment	Limited data storage and analysis capabilities
Cost-Efficiency	Strives for efficient fault resolution strategies	Costs may be higher due to reactive maintenance and manual interventions

Table 1 Comparison Of Fault Detection In Solar Panel

This article highlights the importance of comparing general guidelines for diagnosing and resolving solar panel malfunctions and error codes. It makes the management of solar panels easier and more efficient, demonstrating the benefits of comprehensive training in terms of accuracy, flexibility and automation.

VI. SIMULATION RESULT

The simulation results of “A Report on Research and Development of Solar Panels” provide good information about the effectiveness of the proposed fault detection and problem-solving strategies. The instructions show that in a simulated environment representing many aspects of the real world, it is possible to detect and analyze various faults that equally affect the solar panel. The combination of advanced algorithms ensures high accuracy in fault detection, rapid response and timely intervention. Simulated scenarios involving shading elements, dust accumulation, and electrical failure show that solar panels are changing direction to address different environmental challenges.

Additionally, the simulation tests the report's real-time monitoring capabilities in terms of continuous data collection and analysis. The results demonstrate the effectiveness of these guidelines in predicting design-based failure and ensuring quality control. Simulate dynamic fault resolution strategies, such as automatic maintenance mechanisms or adaptive reconfiguration of solar panel arrays, to evaluate their effectiveness in mitigating problems. The simulation also demonstrates the guide's ability to reduce time by quickly resolving issues and maintaining the solar panel's efficiency. The figure 4.1 shows the Simulation waveform definitions to specify the output signal for sine wave trigger pulse.

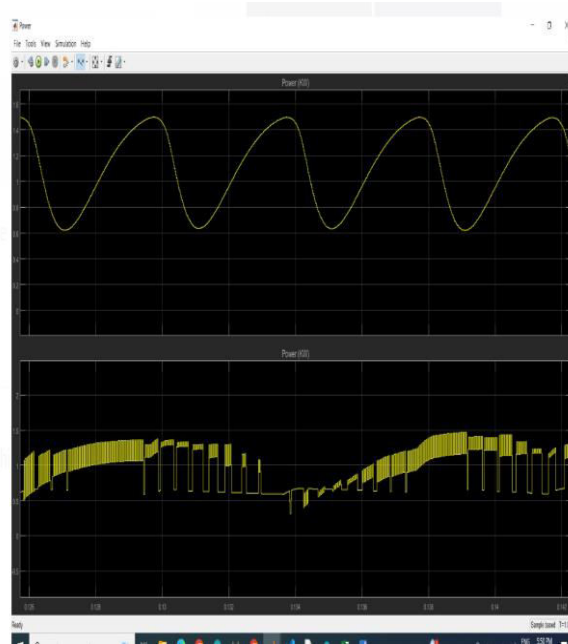


Figure 3 Simulation Trigger Pulse

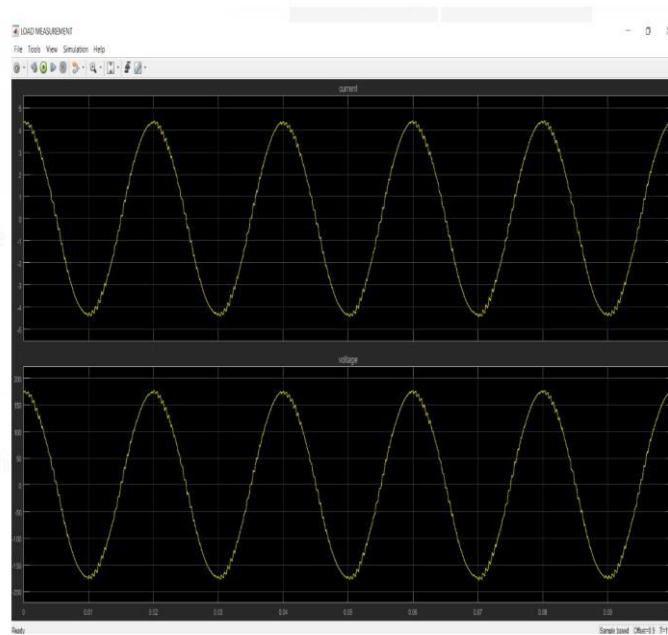


Figure 4 Simulation Sine wave output

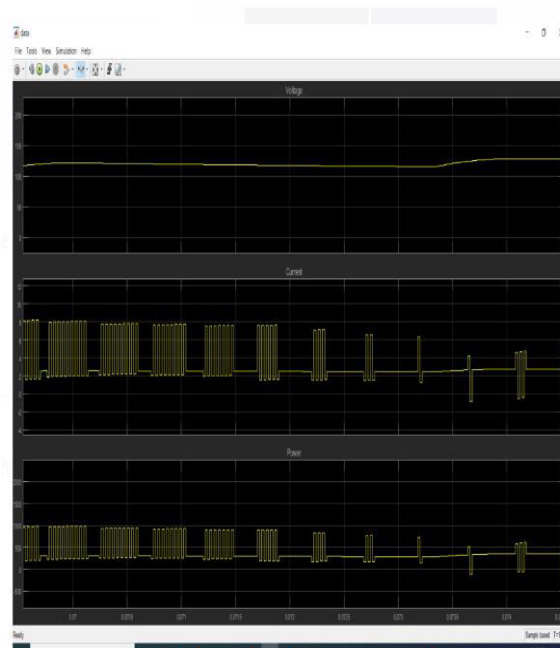


Figure 5 Simulation Results

Overall, the results demonstrate the power and reliability of the guide in detecting, classifying and resolving errors, making it useful for improving the performance and performance of the solar panel.

VII. CONCLUSION

In summary, the application of optimization algorithms for solar power fault detection represents an important first step in improving the reliability and efficiency of solar power systems. Using these algorithms, we demonstrate the ability to detect and diagnose solar panel failures with greater accuracy and speed. The optimization process not only helps identify errors but also helps develop optimization strategies, thus reducing time and improving overall performance. Additionally, the integration of optimization algorithms contributes to the overall stability of the solar energy system by supporting the management of errors, thus extending the life of the solar installation and reducing the impact on the environment. As we continue to improve and expand this system, the future holds promise for widespread solar energy use as solar energy becomes more reliable and economically viable.

VIII. FUTURE SCOPE

The future of solar lighting uses optimization techniques that can increase the efficiency and reliability of solar energy. As technology continues to advance, scientists and engineers may discover new ways to increase the accuracy and speed of fault detection in solar systems. Integration of machine learning technologies such as deep learning and artificial intelligence can improve the ability to instantly detect and diagnose errors. Additionally, the combination of advanced sensors and monitoring equipment allows for a more comprehensive and accurate evaluation of the solar panel. Future research will focus on developing self-management systems that can not only detect malfunctions but also begin to compensate for the lack of human intervention. Additionally, expanding to include predictive maintenance based on historical data and advanced analytics can help reduce downtime and optimize performance. Collaboration between academia, industry, and policymakers will play a key role in shaping the future of solar testing, fostering innovation, and expanding the reliable, efficient use of sunlight.

REFERENCES

1. XuerongCai, Rong-Jong Wai, “ Intelligent DC Arc-Fault Detection of Solar PV Power Generation System via Optimized VMD-Based Signal Processing and PSO–SVM Classifier”, IEEE Journal of Photovoltaics 2022.
2. Andreas S. Spanias, “Solar energy management as an Internet of Things (IoT) application”, 8th International Conference on Information, Intelligence, Systems & Applications (IISA) 2017.

3. Dhanup S. Pillai, N. Rajasekar, “An MPPT-Based Sensorless Line–Line and Line–Ground Fault Detection Technique for PV Systems”, IEEE Transactions on Power Electronics 2018.
4. Sameeksha Katoch, Gowtham Muniraju, Sunil Rao, Andreas Spanias, “Shading prediction, fault detection, and consensus estimation for solar array control”, IEEE Industrial Cyber-Physical Systems (ICPS) 2018.
5. Abdesslam Belaout , FatehKrim , AbdeslemSahli , Adel Mellit , “Multi-class neuro-fuzzy classifier for photovoltaic array faults diagnosis”, 5th International Conference on Electrical Engineering - Boumerdes (ICEE-B) 2017.
6. Jing Yu, Yajie Liu, “Research on Fault Diagnosis of Photovoltaic Array Based on ACA-RBF Neural Network Model”, 4th International Conference on Power and Energy Technology (ICPET) 2022.
7. Sunil Rao, David Ramirez, Henry Braun, Jongmin Lee, Andreas Spanias, “An 18 kW solar array research facility for fault detection experiments”, 18th Mediterranean Electrotechnical Conference (MELECON) 2016.
8. MuneebWali, Ashish Sharma, “An Online Fault Detection and Classification Monitoring scheme for Photovoltaic Plants”, Second International Conference on Electrical, Electronics, Information and Communication Technologies (ICEEICT) 2023.
9. K. Moloi, B. A. Thango, A. F. Nnnachi, “Power Quality Analysis for a Solar-Grid Integrated System Using Support Vector Machine” , Southern African Universities Power Engineering Conference/Robotics and Mechatronics/Pattern Recognition Association of South Africa (SAUPEC/RobMech/PRASA) 2021.
10. Saja Jawad KadhumKadhum, Abdullahi Abdu Ibrahim, “An Analysis System of Fault Diagnosis and Classification in Electrical Energy System Distribution Networks Based on Convolutional Neural Network”, 7th International Symposium on Multidisciplinary Studies and Innovative Technologies (ISMSIT) 2023.
11. S. Usachev, A. Voloshin, S. Livshits, “Software Package for Improving Financial and Technological Performance of Microgrid Networks” , 2nd International Youth Scientific and Technical Conference on Relay Protection and Automation (RPA) 2019.
12. Bryan Pham, Christopher Huff, P.E Nick Vendittis, Andre Smit, AlexandrStinskiy, Suraj Chanda, “Implementing Distributed Intelligence by Utilizing DNP3 Protocol for Distribution Automation Application” , IEEE/PES Transmission and Distribution Conference and Exposition (T&D) 2018.
13. J.A. Tsanakas, D. Chrysostomou, P. N. Botsaris, and A. Gasteratos, “Fault diagnosis of photovoltaic modules through image processing And canny edge detection on field thermographic measurements”, Int. J. Sustain. Energy, vol. 34, no. 6, pp. 351–372, Jul. 2015, doi:10.1080/14786451.2013.826223.
14. M. WaqarAkram, G. Li, Y. Jin, X. Chen, C. Zhu, X. Zhao, M. Aleem, And A. Ahmad, “Improved outdoor thermography and processing of Infrared images for defect detection in PV modules”, Sol. Energy, vol. 190, pp. 549–560, Sep. 2019, doi: 10.1016/j.solener.2019.08.061.
15. J. J. V. Díaz, M. Vlamincq, D. Lefkaditis, S. A. O. Vargas, and H. Luong, “Solar panel detection within complex backgrounds using thermal images Acquired by UAVs”, Sensors, vol. 20, no. 21, pp. 1–16, Sep. 2020, doi:10.3390/s20216219.
16. M. Alsafasfeh I. Abdel-Qader, B. Bazuin, Q. Alsafasfeh, and W. Su, “Unsupervised fault detection and analysis for large photovoltaic systems using drones and machine vision”, Energies, vol. 11, no. 9, p. 2252, Aug. 2018,
17. D.P. Winston, M.S. Murugan, R.M. Elavarasan, R. Pugazhendhi, O.J. Singh, P. Murugesan, M. Gurudhachanamoorthy, and E. Hossain, “Solar PV’s micro crack and hotspots detection technique using NN and SVM”, IEEE Access, vol. 9, pp. 127259–127269, 2021, doi:10.1109/ACCESS.2021.3111904.
18. C.-F. Jeffrey Kuo, S.-H. Chen, and C.-Y. Huang, “Automatic detection, classification and localization of defects in large photovoltaic plants using unmanned aerial vehicles (UAV) based infrared (IR) and RGB imaging”, Energy Convers. Manage., vol. 276, Jan. 2023, Art. No. 116495, doi:10.1016/j.enconman.2022.116495.
19. X. Wang, W. Yang, B. Qin, K. Wei, Y. Ma, and D. Zhang, “Intelligent monitoring of photovoltaic panels based on infrared detection”, Energy Rep., vol. 8, pp. 5005–5015, Nov. 2022, doi: 10.1016/j.egy.2022.03.173.
20. S. N. Venkatesh, B. R. Jeyavadhanam, A. M. M. Sizkouhi, S. M. Esmailifar, M. Aghaei, and V. Sugumaran, “Automatic detection of visual faults on photovoltaic modules using deep ensemble learning network”, Energy Rep., vol. 8, pp. 14382–14395, Nov. 2022, doi:10.1016/j.egy.2022.10.427.
21. Vijayakumar, M.; Karthikeyan, C. Solar Photovoltaic Interconnected ZSI-Unified Power Quality Conditioner to Enhance Power Quality. Bull. Pol. Acad. Sci. Tech. Sci. 2022, 70, e140015.
22. S. Parthiban and V. Madhaiyan, "Experimental validation of solar PV sustained ZSI based unified active power filter for enrichment of power quality", Automata, vol. 62, no. 1, pp. 137-153, Jan. 2021.



INTERNATIONAL
STANDARD
SERIAL
NUMBER
INDIA



INTERNATIONAL JOURNAL OF INNOVATIVE RESEARCH

IN SCIENCE | ENGINEERING | TECHNOLOGY

 9940 572 462  6381 907 438  ijirset@gmail.com



www.ijirset.com

Scan to save the contact details