



e-ISSN: 2319-8753 | p-ISSN: 2347-6710

IJRSET

International Journal of Innovative Research in
SCIENCE | ENGINEERING | TECHNOLOGY



INTERNATIONAL JOURNAL OF INNOVATIVE RESEARCH

IN SCIENCE | ENGINEERING | TECHNOLOGY

Volume 13, Issue 5, May 2024

ISSN INTERNATIONAL
STANDARD
SERIAL
NUMBER
INDIA

Impact Factor: 8.423

9940 572 462

6381 907 438

ijirset@gmail.com

www.ijirset.com

Role of Natural Language in Chatbot Customer Service

Rohit Giri, Lowlesh Yadav, Vijay Rakhde

U.G Student, Department of Computer Science & Engineering, Shri Sai College of Engineering & Technology
Bhadrawati, Maharashtra, India

Assistant Professor, Department of Computer Science & Engineering, Shri Sai College of Engineering & Technology
Bhadrawati, Maharashtra, India

Assistant Professor, Department of Computer Science & Engineering, Shri Sai College of Engineering & Technology
Bhadrawati, Maharashtra, India

ABSTRACT: Natural Language processing (NLP) has become a fundamental component in chatbot based customer service, allowing for more intuitive and human like interactions between automated systems and customers. This technology enables chatbots to comprehend and process text or speech in a way that mimics human understanding, providing personalized and efficient customer support.

NLP in chatbot customer service encompasses several key aspects: intent recognition, entity extraction, sentiment analysis, and context understanding. These elements work in concert to ensure chatbots can accurately identify user queries, extract relevant information, and generate appropriate responses. By leveraging machine learning and deep learning techniques, NLP allows chatbots to continually improve their language comprehension and conversational abilities.

The implementation of NLP in customer service chatbot offers numerous benefits. It reduces the need for human agents, leading to significant cost saving, while also providing 24/7 support to customers. Chatbot powered by NLP can handle a wide range of tasks, from answering frequently asked questions to resolving complex issues, thereby enhancing customer satisfaction and streamlining support processes.

Furthermore, NLP based chatbots can be integrated with other technologies such as customer relationship management (CRM) systems, enabling personalized and context -aware responses. This integration helps create a seamless customer experience, contributing to higher customer retention rates.

Despite the advantages, there are challenges associated with NLP in chatbots, including ambiguity in language, cultural nuances, and the need for large datasets to train effective models. Addressing these challenges requires continuous advancements in NLP algorithms and comprehensive training data to improve chatbot performance.

In conclusion, NLP is a transformative technology in the realm of chatbot customer service, offering improved efficiency, scalability, and customer satisfaction. As technology evolves, the capabilities of NLP- driven chatbots are expected to expand, further enhancing the customer service landscape.

KEYWORD: Natural language processing, chatbot, customer service.

I. INTRODUCTION

In the digital age, customer service has evolved to meet the demands of an increasingly connected and technology-savvy population. Traditional customer service methods, often characterized by lengthy wait times and limited availability, are being replaced or supplemented by automated systems that can interact with customers around the clock. At the forefront of this transformation are chatbots—software applications that use artificial intelligence (AI) and Natural Language Processing (NLP) to engage in text based or voice-based conversation with users.

NLP is a Branch of AI that focuses on the interaction between computers and human language. It allows chatbots to understand, process, and respond to natural language in a way that simulates human communication. This capability

has made chatbots an attractive option for businesses seeking to streamline customer service operations, reduce costs, and improve customer satisfaction.

The significance of NLP in chatbot-based customer service lies in its ability to automate routine tasks, provide instant responses to common queries, and offer 24/7 support. Chatbots equipped with NLP can perform a wide range of function, from answering frequently asked questions to troubleshooting technical issues, thereby reducing the workload for human customer service agents.

Despite the growing popularity of chatbots in customer service, several challenges persist. Ambiguity in language, cultural nuances, and the need for large datasets to train NLP models are among the key issues that must be addressed to ensure effective and reliable chatbot performance. Additionally, the interaction between chatbots and human customers and must be seamless and natural to maintain customer trust and satisfaction.

Customer service has undergone a significant transformation in recent years, driven by advancements in technology and changing consumer expectation. Traditional methods of customer support, which relied heavily on human agents, often, faced challenges like long wait times, limited availability, and high operational costs. To address these challenges, many companies have turned to chatbots – automated system capable of engaging in text-based conversation with customers.

At the heart of effective chatbot technology is Natural Language Processing (NLP), a branch of artificial intelligence that enables machines understand and process human language. NLP allows chatbots to interpret customer queries, identify key information, and generate appropriate responses, all in a conversational manner. This capability has transformed chatbot-based customer service, allowing for faster response times, improved customer satisfaction, and reduced reliance on human agents for routine tasks. The role of NLP in chatbot customer services extends beyond simple query processing. It encompasses several critical aspects, including intent recognition, entity extraction, sentiment analysis, and contextual understanding. These capabilities enable chatbot to perform a wide range of function, from answering common question to resolving complex issues, thereby enhancing the overall customer service experience.

However, the integration of NLP into chatbot-based customer service presents certain challenges. Language ambiguity, cultural nuances, and the need for extensive training data are just a few of the obstacles that must be overcome to ensure accurate and effective chatbot interaction. Additionally, maintaining a human-like conversational flow and addressing customer concerns in a personalized manner remain critical to building trust and satisfaction. Natural Language Processing (NLP) customer services chatbots are advanced artificial intelligence System that leverage NLP techniques to understand and respond to user queries In natural language [1]. These chatbot are designed to interact with customer in a way that simulates human conversation, providing prompt and contextually relevant assistance by integration NLP, these chatbot can perform task such as text classification, sentiment analysis and entity recognition, enabling them to comprehend user intent accurately. Their sophisticated algorithm including deep learning and neural network, enable them to continuously learn and improve their interactions ensuring higher levels of customer satisfaction and engagement.

II. LITERATURE REVIEW

In recent years, Natural Language processing (NLP) has gained significant traction in the realm of customer service, with chatbots playing a pivotal role in Enhancing user interactions. with the increasing demand for seamless efficient customer support, the integration of NLP-based chatbots has become imperative for businesses across various industries.[4]

Integrating AI-driven chatbot systems in the insurance sector, specifically with advanced technologies like natural language understanding (NLU) and Natural Language processing (NLP),[5]these chatbot can effectively interpret customer queries and streamline various insurance processes ,including claim resolution , product sales ,and customer support , moreover, their ability to analyse data aids in precise risk prediction , ensuring tailored insurance solutions for customer while safeguarding the company from potential risk Brief overview of NLP and its relevance in customer service.

Importance of customer service chatbots in the current business landscape. In customer service chatbots can encompass various key themes such as the evolution of NLP in customer experience, the effectiveness of NLP on customer experience, the effectiveness of NLP in handling complex inquiries, the role of sentiment analysis in customer

sentiment tracking, and the integration of machine learning models for machine learning models for continuous improvement.

Researchers often explore the challenges of implementing NLP in customer service, including language understanding, context awareness, and maintaining a personalized customer interaction.

Furthermore, they delve into the advancements in conversational AI, such as the use of transformers, pre-trained language models, and the incorporation of multi-modal understanding for richer customer engagement experiences.



Fig 1: Understanding the Role of Natural Language Processing in AI Generated Reviews

1. Introduction to AI-Generated Reviews:

Define AI-generated reviews and explain their purpose. These are reviews generated by Artificial intelligence (AI) technologies, often used to evaluate products, services, or content. AI-generated reviews aim to produce quick, consistent, and reliable assessments.

2. Historical Context of AI-generated Reviews:

Discuss the evolution of AI and how it has led to the development of AI-generated reviews. Mention the role of Natural language Processing (NLP) and Natural Language Generation (NLG) in enabling AI to generate text-based content such as reviews.

3. Mechanism of AI-Generated Reviews:

Describe how AI-generated reviews work. Explain that AI models are trained on large datasets to understand language pattern and then generated reviews based on that training. Address the importance of training data and how biases influence the outcome.

4. Benefits of AI-Generated Reviews:

Outline the key benefits of using AI-generated reviews:

5. Speed and Efficiency: AI-generated reviews can be produced quickly and efficiently, often much faster than manual reviews.

6. Consistency: These reviews maintain a consistent format and language.

7. Cost-Effectiveness: Generating reviews with AI requires fewer resource compared to manual methods, making it cost-efficient.

8. Challenges and Limitations of AI-Generated Reviews:

Discuss the potential issues and limitations of AI-generated reviews:

9. Authenticity and Trustworthiness: AI-generated reviews may lack the authenticity of human written reviews, affecting their trustworthiness.

10. Bias and Misrepresentation: Biases in training data can lead to skewed or misleading reviews.

11. Ethical Concerns: Address the ethical implication, such as the potential for deceptive practices or lack of transparency

1.NLP Techniques and Algorithms:

. Symbolic Algorithms

Symbolic algorithms analyse the meaning of words in context and use this information to form relationships between concepts. This approach contrasts machine learning models which rely on statistical analysis instead of logic to make decisions about words [2].

Symbolic AI uses symbols to represent knowledge and relationship between .it produces more accurate results by assigning meanings to words based on context and embedded knowledge to disambiguate language.

. Statistical Algorithms

Statistical algorithms allow machines to read, understand, and derive meaning from human languages. Statistical NLP helps machines recognize patterns in large amounts of text. By finding these, a machine can develop its own understanding of human language. The analysis you are referring to is called “N-gram analysis.” in natural language processing (NLP), N-grams are contiguous sequences of n items from a given sequence of text or speech. These items can be phonemes, syllables, letters, words, or base pairs according to the application.

N-grams analysis is commonly used for several purpose, including:

. **Language Modelling:** N-grams are used to model the likelihood of a particular sequence of words occurring. Examining the frequency of various n-grams, especially bigrams (2-grams) and trigrams (3-grams), it is possible to predict the likelihood of a word following another word.

. **Machine Translation:** N-gram analysis can be used in statistical machine translation to determine the most probable translation of a sequence of words based on the occurrence of similar n-grams in the training data.

. **Text Generation:** can be used in text generation tasks, where the model predicts the next word or sequence of words in a generated text based on the occurrence of similar n-grams in the training data.

2.Challenges Faced in Customer Service Chatbots:

. **Transferring Customer Calls:** Transferring customer call is a critical aspect of customer service that can significantly impact the customer experience. [3] While it can be a necessary step to ensure that customers receive the most effective support, it is important to handle call transfers with care and efficiency. Here are some key strategies to consider when transferring customer calls:

. **Active Listening and understanding:** listen attentively to the customer concerns and ensure a thorough understanding of their issue before initiating a transfer. Empathize with their situation to establish a positive rapport.

. **Provide a clear explanation:** Clearly communicate to the customer why their call needs to be transferred. Use simple and concise language to explain the reasons behind the transfer, ensuring the customer understands the necessity and benefits of speaking to another.

. **Research Question:** here are some unique and insightful questions along with their corresponding answers:

1.How do you ensure the security of my data during our conversation: We use industry-standard encryption protocols to protect your data during our conversation. Additionally, our servers undergo regular security audits to ensure the highest level of data protection.

2.How do you handle complex queries that require human intervention: For complex queries beyond my capabilities, I seamlessly transfer the conversation to our human support team, who possess the expertise to provide you with a comprehensive solution in a timely manner.

3.Can you provide example of the types of issues you can swiftly resolve without human intervention: Certainly, I can quickly assist with tasks like resetting passwords, providing basic troubleshooting steps, and offering information about our product features and pricing plans.

4.How do you personalize user experience and cater to individual preferences: I analyse user interactions and behaviour patterns to provide tailored recommendations and solutions. By understanding your preferences and past interactions, I can offer customized suggestions and assistance.

5. In what ways do you integrate user feedback into improving your services: We carefully review user feedback and utilize it to refine our system's responses and enhance user experiences. Your input directly contributes to our continuous efforts to improve the overall functionality and efficiency of our services.

6. How do you maintain consistency in providing information across different channels and platforms: To maintain consistency, I am integrated with a centralized knowledge base that ensures uniform information dissemination across various channels and platforms. This integration helps in delivering accurate and coherent responses regardless of the platform used.

7. How do you handle and rectify misunderstandings during a conversation: In case of misunderstandings, I utilize natural language processing techniques to identify and clarify ambiguous points. Moreover, I provide simplified explanations and seek further context to ensure accurate assistance.

8. Can you provide insights into how you handle and learn from unsuccessful interactions with users: Unsuccessful interactions are analysed to identify areas of improvement. I incorporate this feedback into my training data, enabling me to enhance my understanding and responses for similar future interactions, thus continually improving the quality of service provided.

III. RELATED WORK

1. Proactive Assistance and Recommendations

Explanation: NLP-driven chatbots can analyze customer data and interaction history to offer proactive assistance. This might include suggesting relevant products or services based on customer behaviour, search history, or past purchases.

Example: if a customer frequently asks about hiking gear, a chatbot can proactively recommend new hiking products or promotions, enhancing the customer experience and increasing sales opportunities.

2. Automated Workflows and ticket management

Explanation: chatbot with NLP can integrate with customer support system to automate workflows. They can classify customer queries, assign priority levels, and route tickets to the appropriate department or human agents.

Example: When a customer reports a technical issue, the chatbot can automatically create a support ticket, assign it to the right team, and send an acknowledgment to the customer, reducing response times and improving efficiency.

3. Knowledge Base integration and Self-service

Explanation: NLP-based chatbots can connect with a company's base to offer self-service solutions. This integration allows customers to find answer to common question without needing human assistance.

Example: A customer asks about return policies. The chatbot can pull relevant information from the knowledge base, providing an instant response, reducing the need for human intervention and improving customer satisfaction.

4. Quality Control Consistency:

NLP chatbot deliver consistent responses based on predefined rules and language models. This consistency ensures that customers receive uniform information and that the company's brand voice maintained.

Explanation: NLP chatbot deliver consistent responses based on predefined rules and language models. This consistency ensures that customer receive uniform information and that the company's brand voice is maintained.

Example: A chatbot trained to answer questions about warranty terms can provide consistent information across all customer interactions, ensuring a uniform customer experience and reducing misinformation.

5. Customer Insights and Analytics

Explanation: The data generated by NLP-based chatbots can be analysed to gain insights into customer behavior, trends, and common issues. These insights help businesses refine their customer service strategies and product offerings.

Example: By analyzing chatbot interaction, a business discovers that many customers have questions about a specific feature. This insight leads to the creation of better FAQs and improved training for human agents.

6. Compliance and data security

Explanation: NLP-based chatbots must comply with data privacy regulations like GDPR or CCPA. They also robust security measures to protect customer data, especially in industries like healthcare or finance.

Example: A healthcare chatbot that uses NLP must ensure patient data is encrypted and access is restricted to authorized personnel. This ensures compliance with regulations and builds customer trust.

7. Voice-Enabled Chatbot and Multimodal interactions

Explanation: NLP allows chatbots to process voice inputs, enabling voice-based interactions. This capability provides greater accessibility and a more natural user experience. Multimodal interactions involve combining text, voice and other forms of communication.

Example: A customer uses a voice-enabled chatbot on their smart speaker to inquire about account balances. The chatbot responds verbally and can also send a summary via text or email for reference.

8. Human-in-the-loop System

Explanation: Despite the capabilities of NLP chatbot, some situations require human intervention. Human-in-the-loop System allow chatbot to escalate complex or sensitive issues to human agents, ensuring customer satisfaction and personalized support.

Example: A chatbot recognizes a customer is experiencing significant frustration or a complex issue. It can seamlessly transfer the conversation to a human agent, who can provide more detailed assistance and empathy.

IV. METHODOLOGY

Customer service chatbot with Natural Language Processing (NLP) capabilities involving several key steps. Here is a general methodology.

Define objective: Clearly outline the goals and functionalities you want the scope of its operation and specific tasks it should handle.

Data collection: Gather a significant amount pf data. Including customer inquiries, and relevant conversation, the specific tasks it should handle.

NLP model selection: Choose an appropriate NLP model, such as BEAT, GPT-3, or accustom model tailored to your specific needs, and fine-tune it to understand and generate response relevant to customer quires.

Integration: integrate the NLP model with the chatbot framework and design an intuitive user interface for the customer service chatbot.

Deployment: Deploy the NLP-powered chatbot on the desired platform, whether it website, mobile application, or messaging service.

By following this methodology, you can create an efficient NLP-powered customer service chatbot that enhances user experience and streamline customer support processes.

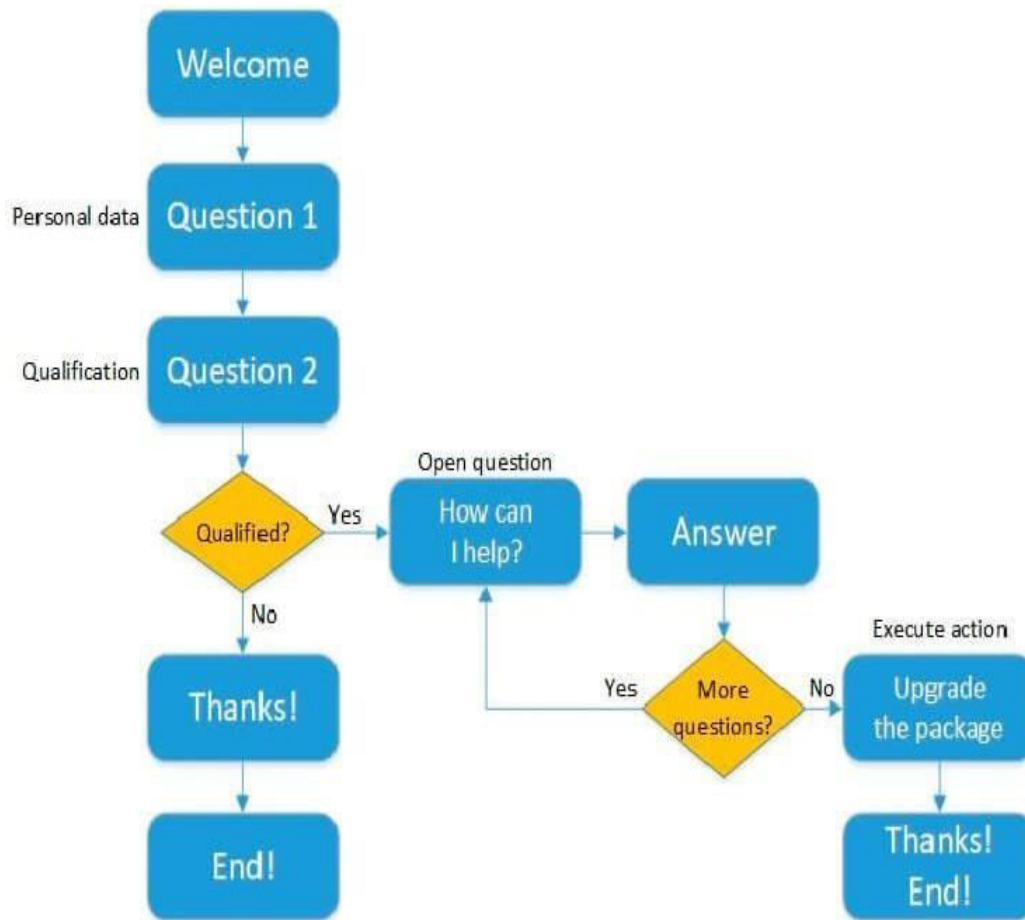


Fig 2: interpreting customer intention contact centre software.

V. CONCLUSION

Advancement in artificial intelligence and natural language processing (NLP) technologies have significantly contributed to enhancing customer service. This progress has resulted in positive developments across various sectors, enabling the delivery of more tailored offers and quicker, more predictive responses to customers. This systematic review, encompassing 26review, encompassing in the use of natural language processing in customer service from 2015 to 2022, drawing from database of relevant literature. The review addresses 5 key research question. it highlights how NLP has been applied in several key domains of customer service, such as social media, e-commerce, healthcare telecommunication, reservation construction, banking, energy utilities, marketing, and general studies.

REFERENCES

1. “A survey pf natural Language Processing technique for Chatbots” by E. Atanasova, S. Nakov, and V. Dimitrova. This paper provides an overview of the current state of the art in NLP technique for chatbot development.
2. “Building a chatbot using the natural language Processing and deep learning “by P. K. Mishra, A. k. Singh, and P.K. Singh this paper describes a chatbot system built using NLP and deep learning techniques.
3. “Natural Language Processing for Building Chatbot: challenges and solution” by M.A Imran, A. Raza. This paper discusses the challenges of NLP for building chatbot and provides a solution for addressing these challenges.
4. Recent advances in NLP for building chatbots: by J. lee and J. Kim. This paper reviews recent advances in NLP for building chatbots including techniques for intent recognition, entity extraction sentiment analysis and dialogue management.

5. "NLP for Building Chatbots: A Review of the Literature" by D. D Chen, X.L.Liu. and This paper provides a review of the literature on NLP for building chatbots, in chatbots, including recent advances and future research direction.
6. "Natural Language Processing for Chatbot Development: A Comparative study" by M.A. Imran, M.A. Imran, and A. Raza. This paper compares different NLP techniques for chatbot development and evaluates their effectiveness in terms of accuracy, efficiency, and scalability
7. "A Comparative Study of NLP Techniques for Building intelligent Virtual Assistant" by A.K. Singh, P.K. Mishra, and P.K. Singh. This paper compares different NLP techniques for building intelligent virtual assistants, including rule-based, statistical and machine learning based approaches.
8. "Building Chatbot using NLP and Machine learning: Challenges and solution" by X.L.Liu, Y.Y. Liu and D.D. Chen . this paper discusses the challenges of building chatbots using NLP and machine learning techniques, and provides solution for addressing these challenges.
9. Niranjana Dandekar, suyog Ghodey "implementation of a chatbot using natural processing".
10. Methodology for the implementation of virtual Assistants for education using Google dialogflow.
11. Lowlesh Nandkishor Yadav, "Predictive Acknowledgement and Bandwidth" IJRECE VOL.7 ISSUE 1 (JANUARY-MARCH 2019) Pgno.275-278
12. Patil. & Kulkarni , M.S. (2019). Artificial intelligence in Financial Services: Customer Chatbot Advisor Adoption. International journal of innovation technology and Exploring Engineering.
13. Lowlesh Yadav and Asha Ambhaikar, "IOHT based Tele-Healthcare Support System for Feasibility and performance analysis," Journal of Electrical Systems, vol. 20, no. 3s, pp. 844–850, Apr. 2024, doi: 10.52783/jes.1382.
14. L. Yadav and A. Ambhaikar, "Feasibility and Deployment Challenges of Data Analysis in Tele-Healthcare System," 2023 International Conference on Artificial Intelligence for Innovations in Healthcare Industries (ICAIIHI), Raipur, India, 2023, pp. 1-5, doi: 10.1109/ICAIIHI57871.2023.10489389.
15. L. Yadav and A. Ambhaikar, "Approach Towards Development of Portable Multi-Model Tele-Healthcare System," 2023 International Conference on Artificial Intelligence for Innovations in Healthcare Industries (ICAIIHI), Raipur, India, 2023, pp. 1-6, doi: 10.1109/ICAIIHI57871.2023.10489468.
16. Lowlesh Yadav and Asha Ambhaikar, Exploring Portable Multi-Modal Telehealth Solutions: A Development Approach. International Journal on Recent and Innovation Trends in Computing and Communication (IJRITCC), vol. 11, no. 10, pp. 873–879, Mar. 2024.11(10), 873–879, DOI: 10.13140/RG.2.2.15400.99846.
17. Lowlesh Yadav, Predictive Acknowledgement using TRE System to reduce cost and Bandwidth, March 2019. International Journal of Research in Electronics and Computer Engineering (IJRECE), VOL. 7 ISSUE 1 (JANUARY- MARCH 2019) ISSN: 2393-9028 (PRINT) | ISSN: 2348-22



INTERNATIONAL
STANDARD
SERIAL
NUMBER
INDIA



INTERNATIONAL JOURNAL OF INNOVATIVE RESEARCH

IN SCIENCE | ENGINEERING | TECHNOLOGY

 9940 572 462  6381 907 438  ijirset@gmail.com



www.ijirset.com

Scan to save the contact details