



e-ISSN: 2319-8753 | p-ISSN: 2347-6710

IJRSET

International Journal of Innovative Research in
SCIENCE | ENGINEERING | TECHNOLOGY



INTERNATIONAL JOURNAL OF INNOVATIVE RESEARCH

IN SCIENCE | ENGINEERING | TECHNOLOGY

Volume 13, Issue 5, May 2024

ISSN INTERNATIONAL
STANDARD
SERIAL
NUMBER
INDIA

Impact Factor: 8.423

 9940 572 462

 6381 907 438

 ijirset@gmail.com

 www.ijirset.com

Pothole Detection using Deep Learning

N Rakesh Reddy, Rishab Kotari, G Sathwik Reddy, S Praveena

IV B. Tech, Department of ECE, MGIT, Gandipet, Hyderabad, India

IV B. Tech, Department of ECE, MGIT, Gandipet, Hyderabad, India

IV B. Tech, Department of ECE, MGIT, Gandipet, Hyderabad, India

Associate Professor, Department of ECE, MGIT, Gandipet, Hyderabad, India

ABSTRACT: The road is the most used means of transportation and serves as a country's arteries, so it is extremely important to keep the roads in good condition. Potholes that happen to appear in the road must be repaired to keep the road in good condition. Spotting potholes on the road is difficult, especially in a country like India where roads stretch millions of kilometres across the country. Therefore, there is a need to automate the identification of potholes with high speed and real-time precision. CNN is an object detection algorithm and our main goal of this article is to train and analyse the YOLO v8 model for pothole detection. The YOLO model, trained on a pothole dataset, is evaluated based on metrics such as accuracy, recall, and model size, solely focusing on detecting potholes. The pothole detection capabilities of the newly developed YOLO v8 algorithm. The research conducted in this paper will help reduce costs and increase the Accuracy of pothole identification and will be of great help in road maintenance.

I. INTRODUCTION

Pothole detection stands as a crucial technology in ensuring road safety, with applications ranging from preventive maintenance to real time hazard identification. Through the integration of cutting-edge technologies like YOLO v8 and Roboflow, our project aims to revolutionize pothole detection by leveraging deep learning methodologies and real-world datasets. By harnessing the power of deep learning algorithms, particularly within the domain of computer vision, our project endeavors to enhance the accuracy and efficiency of pothole detection systems. Previously, pothole detection systems faced significant challenges, including accurately identifying potholes amidst varying road conditions, differentiating them from other road anomalies, and processing large volumes of image data in real-time. Moreover, factors such as lighting conditions, road obstructions, and environmental clutter posed additional hurdles in achieving precise and reliable detection results. To overcome these challenges, our project adopts a multi-faceted approach, utilizing advanced deep learning models such as YOLO v8 and innovative data pre-processing techniques facilitated by Roboflow. By combining robust object detection capabilities with state-of-the-art image annotation tools, we aim to streamline the data collection and annotation process, enabling the efficient training of pothole detection models.

II. RELATED WORK

Roads are a fundamental component of a country's transportation system, providing essential connectivity for people and goods nationwide. A well-developed road infrastructure facilitates business opportunities, access to jobs, economic growth, and healthcare services. High-quality roads significantly contribute to a country's GDP [1], while poorly maintained road infrastructure can pose serious risks to passenger safety and vehicle condition. Typically constructed with asphalt pavement, roads are susceptible to various structural damages over time.

Addressing asphalt pavement distress has been a key concern for authorities to ensure safety and functionality. These pavements are vulnerable to factors such as heavy traffic loads, weather conditions, aging, substandard construction materials, and inadequate drainage systems. Two major types of pavement failures are cracks and potholes, with potholes being depressions or cavities in the road surface that demand urgent attention. Potholes can lead to hazardous situations, including accidents, uncomfortable driving experiences, and vehicle damage, as illustrated in Figure 1. Prompt attention to pothole repair is crucial to mitigate their adverse effects. The World Health Organization (WHO) has predicted that road accidents could become the fifth leading cause of death by 2030 [3].

The critical impact of potholes has drawn significant attention from researchers in the civil engineering community. Developing nations often rely on manual inspection methods to detect potholes, which can result in inaccuracies due to their reliance on individual expertise. These manual methods are labor-intensive, time-consuming, and expensive. However, several advanced technical solutions for pothole detection have been developed, including 3D reconstruction-

based scanning methods [4–6], vibration sensor-based approaches [7–10], thermal imaging techniques [11, 12], and computer vision-based systems [13–15].

III. METHODOLOGY

Fig. 1 below shows the diagram of the YOLO-based project approach. It begins with data preprocessing, followed by the creation of bounding boxes around sample images used in training, and concludes with the evaluation of the model’s detection rate. The YOLOv8-based pothole detection system utilizes deep learning to identify potholes in images or video frames from various sources. It involves data acquisition from road surveys, dashcams, or publicly available datasets,

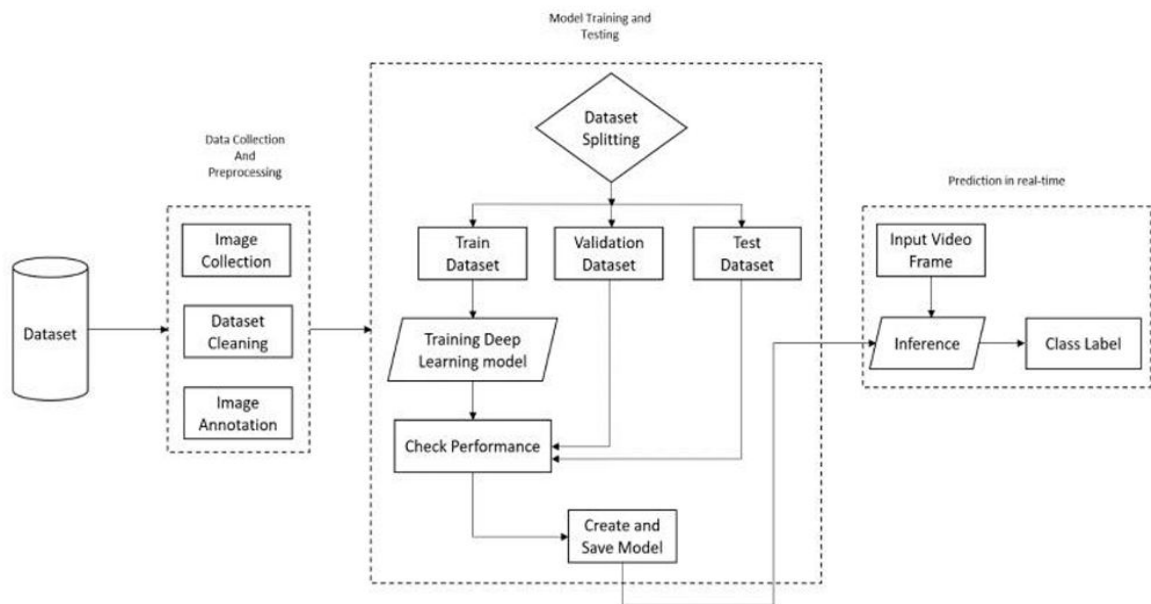


Fig.1

followed by preprocessing steps like resizing and normalization. YOLO V8 is the newest addition to the popular YOLO group of object detection models, which Ultralytics developed. This state-of-the-art model builds on the strengths of old versions of YOLO and provides a faster and more efficient detection system [16]. Training the YOLOv8 model involves feeding annotated data to enable it to recognize potholes and optimize parameters for accurate detection. Visualization of detected potholes is optional for further analysis. YOLOv8 offers real-time potential, single-stage detection, and flexibility due to its open-source nature. This system aims to automate pothole detection, aiding in efficient road management.

The methodology for our pothole detection project is structured into several key phases, each leveraging advanced deep learning techniques and robust data management practices to ensure the effectiveness of the detection system. Below is a detailed description of the steps involved:

Step1: Data Collection: Data collection is the foundation of our project, where we gather a diverse set of road images and videos. We sourced data from various online platforms such as Google and YouTube to ensure diversity in road conditions, lighting, and weather scenarios. This comprehensive dataset captures different types of potholes and road textures, which is critical for training a generalized detection model. 10

Step 2: Data Annotation: Using Roboflow, we meticulously annotated the collected images and videos. The annotation process involved labeling potholes with bounding boxes, which helps in training the detection model. We annotated a total of 2000 images, ensuring that each pothole instance is accurately marked. Roboflow's intuitive tools allowed us to perform this task efficiently, providing high-quality annotated data.

Step 3: Data Preprocessing: Roboflow's preprocessing tools were utilized to enhance the quality of our dataset. This included resizing images to a standard resolution, applying data augmentation techniques such as rotation, flipping, and color adjustments to increase the dataset's variability, and normalizing pixel values. These steps are crucial for improving the model's robustness and generalization capabilities.

Step 4: Model Development: The core of our methodology involves developing a deep learning model using YOLO v8, known for its efficiency and accuracy in object detection tasks. The model architecture integrates Convolutional Neural Networks (CNNs) to extract spatial features from the images, enabling precise localization and classification of potholes.

Step 5: Training the Model: We trained the YOLO v8 model on our preprocessed and annotated dataset. The training process involved fine-tuning the model's parameters to optimize detection accuracy while minimizing false positives and negatives. We utilized a combination of GPU acceleration and advanced training techniques to expedite the process and achieve high performance.

Step 6. Model Testing and Validation: The trained model was rigorously tested on a separate validation dataset to evaluate its performance. We employed metrics such as precision, recall, and mean Average Precision (mAP) to assess the accuracy and reliability of the pothole detection system. Continuous iterations of testing and refinement were conducted to enhance model performance.

Step6: Deployment: Upon achieving satisfactory results, the model was deployed for real-time pothole detection. We integrated the model into a system capable of processing live video feeds, enabling immediate detection and alerting of potholes. This deployment phase involved optimizing the model for real-time performance, ensuring low latency and high accuracy. The methodology includes a feedback loop for continuous improvement. As new data is collected and annotated, it is fed back into the model for retraining, allowing the system to adapt to new conditions and improve over time. This iterative process ensures that the pothole detection system remains effective and up-to-date. By following this structured methodology, we aim to deliver a robust and reliable pothole detection system that can significantly enhance road safety and maintenance efficiency.

IV. EXPERIMENTAL RESULTS

Metrics for assessment: The viability framework is assessed by calculating accuracy. It is utilized to check the effectiveness of the classifier.

(i) Accuracy: It is the ability of a system to determine the type of ALL correctly and is given by:

$$\text{Accuracy} = \frac{TP+TN}{TP+TN+FP+FN}$$

(ii) Specificity: It is the ability of a system to precisely identify the genuine ALL and is calculated as:

$$\text{Specificity} = \frac{TN}{TN+FP}$$

(iii) Sensitivity: It takes into account the capacity of a model to correctly classify the ALL and is measured as:

$$\text{Sensitivity} = \frac{TP}{TP+FN}$$

(iv) Precision: It is defined as the proximity of the two measured values to each other and is given by

$$\text{Precision} = \frac{TP}{TP+FP}$$

The Table 1 shows the parameter values obtained by the model for the given data set.

Parameter \ Model	Accuracy	Specificity	Sensitivity	Precision
Yolov8	0.9876	0.8923	0.9230	0.94

Table 1: Model parameters

Figure 2 shows the detected potholes obtained after testing.



Fig 2. Output image

REFERENCES

- [1] Ng C., Law T., Jakarni F., and Kulanthayan S., Road infrastructure development and economic growth, in IOP conference series: materials science and engineering. (2019) **512**, no. 1, IOP Publishing, 012045.
- [2] Rahman S., A; Patel, "Pothole Image Dataset. Kaggle, 2020, <https://www.kaggle.com/sachinpatel21/pothole-image-dataset/>.
- [3] health W., Statistics, "Injury Deaths Rise in Rank, 2008, https://www.who.int/violence_injury_prevention/key_facts/VIP_key_fact_3.pdf/.
- [4] Wang K. C., Challenges and Feasibility for Comprehensive Automated Survey of Pavement conditions, Proceedings of the Applications of Advanced Technologies in Transportation Engineering (2004), May 2004, Beijing, China, 531–536.
- [5] Chang K., Chang J., and Liu J., Detection of pavement distresses using 3d laser scanning technology, Proceedings of the Computing in Civil Engineering (2005), May 2005, Cancun, Mexico, 1–11.
- [6] Hou Z., Wang K. C., and Gong W., Experimentation of 3d pavement imaging through stereovision, Proceedings of the International Conference on Transportation Engineering 2007, July 2007, Chengdu, China, 376–381.
- [7] Harikrishnan P. and Gopi V. P., Vehicle vibration signal processing for road surface monitoring, IEEE Sensors Journal. (2017) **17**, no. 16, 5192–5197.
- [8] Yu B. X. and Yu X., Vibration-based system for pavement condition evaluation, Proceedings of the Applications of Advanced Technology in Transportation, August 2006, Chicago, IN, USA, 183–189.
- [9] De Zoysa K., Keppitiyagama C., Seneviratne G. P., and Shihan W., A public transport system based sensor network for road surface condition monitoring, Proceedings of the 2007 Workshop on Networked Systems for Developing Regions, August 2007, Colombo, Srilanka, 1–6.
- [10] Eriksson J., Girod L., Hull B., Newton R., Madden S., and Balakrishnan H., The pothole patrol: using a mobile sensor network for road surface monitoring, Proceedings of the 6th International Conference on Mobile Systems, Applications, and Services, June 2008, Breckenridge, CO, USA, 29–39.

- [11] Glowacz A., Ventilation diagnosis of angle grinder using thermal imaging, *Sensors*. (2021) **21**, no. 8.
- [12] Thermographic fault diagnosis of ventilation in bldc motors, *Sensors*. (2021) **21**, no. 21.
- [13] Koch C. and Brilakis I., Pothole detection in asphalt pavement images, *Advanced Engineering Informatics*. (2011) **25**, no. 3, 507–515.
- [14] Jog G., Koch C., Golparvar-Fard M., and Brilakis I., Pothole properties measurement through visual 2d recognition and 3d reconstruction, *Proceedings of the Computing in Civil Engineering* (2012), June 2012, Clearwater Beach, FL, USA, 553–560.
- [15] Huidrom L., Das L. K., and Sud S., Method for automated assessment of potholes, cracks and patches from road surface video clips, *Procedia-Social and Behavioral Sciences*. (2013) **104**, 312–321.
- [16] Guo, J., Lou, H., Chen, H., Liu, H., Gu, J., Bi, L., et al. (2023). A new detection algorithm for alien intrusion on highway. *Sci. Rep.* 13 (1), 10667. doi:10.1038/s41598-023-37686-w



INTERNATIONAL
STANDARD
SERIAL
NUMBER
INDIA



INTERNATIONAL JOURNAL OF INNOVATIVE RESEARCH

IN SCIENCE | ENGINEERING | TECHNOLOGY

 9940 572 462  6381 907 438  ijirset@gmail.com



www.ijirset.com

Scan to save the contact details